

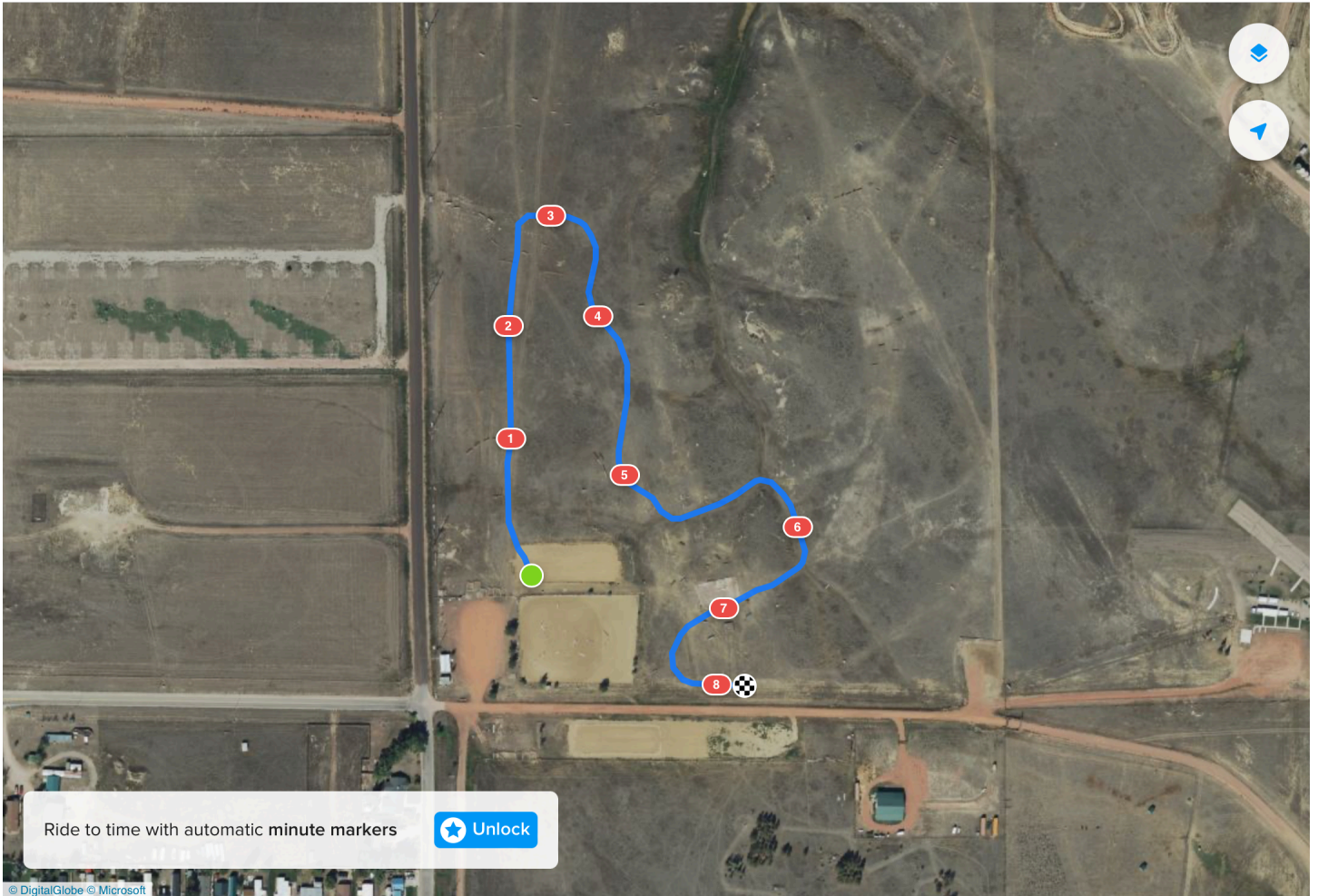
STARTER DERBY COURSE

◀ Mail 3:45 PM Thu Jun 13

⋮

📶 59% 🔋

← Powder Basin Equestrian Derby Starter



Lime Green on White Not to exceed 2'3"

1. Stacked logs
2. Bench
3. Telephone poles
4. Green Log Stack
5. Green Log Stack heading down the hill
6. Diamond Cabin
7. Water
8. Stacked logs

**Lime Green Tags throughout the XC Park indicate a jump that is 2'3" or less
Tags and/or Division Numbers
Indicate
Direction of Jump**