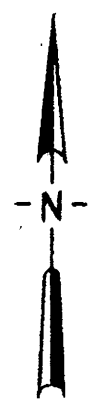
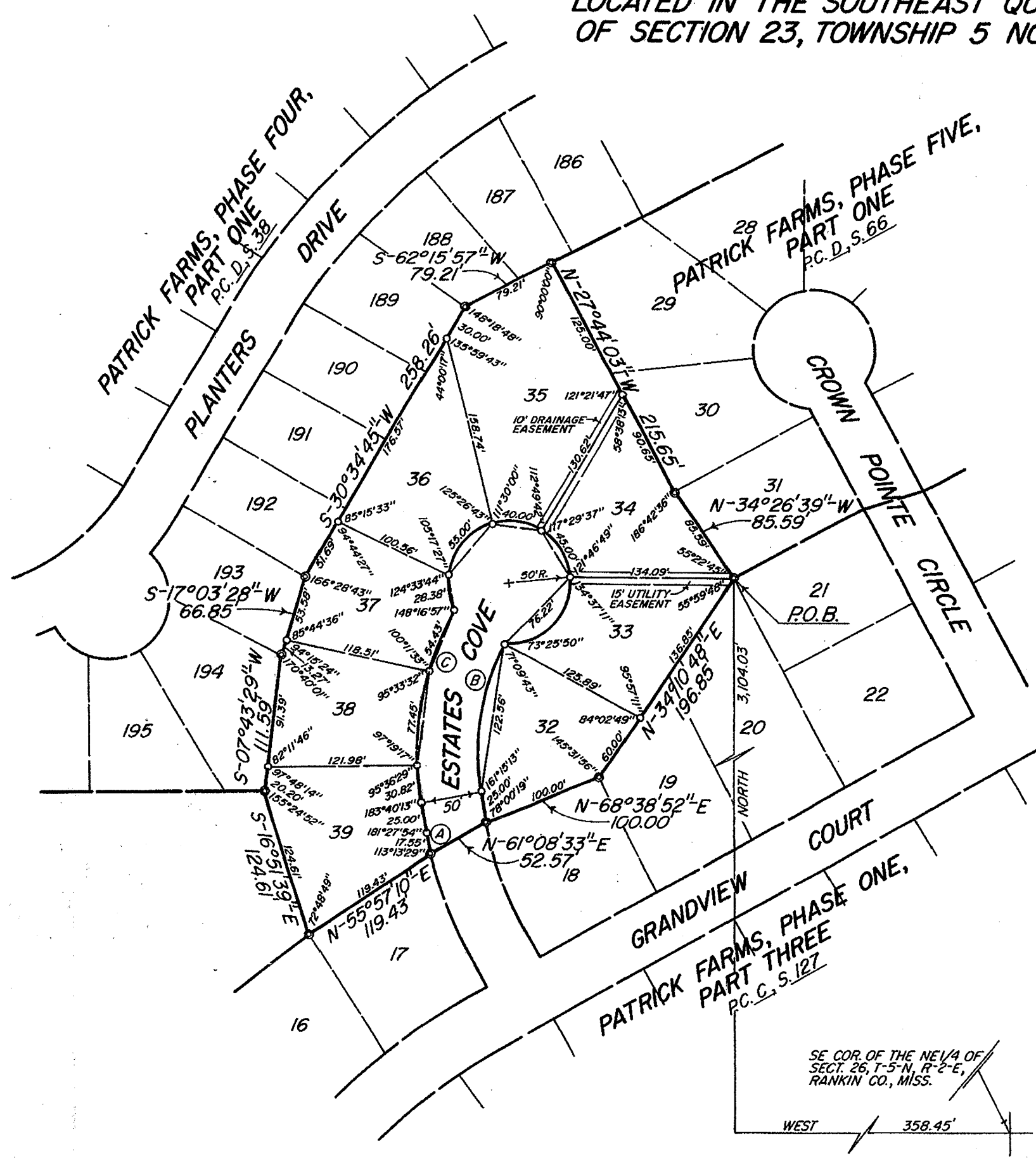
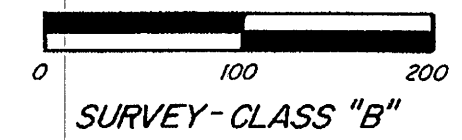


INDICATES CONCRETE MONUMENT
INDICATES IRON PIN
INDICATES EASEMENTS

PATRICK FARMS, PHASE FIVE, PART TWO

LOCATED IN THE SOUTHEAST QUARTER (SE1/4) OF THE SOUTHEAST QUARTER (SE1/4) OF SECTION 23, TOWNSHIP 5 NORTH, RANGE 2 EAST, RANKIN COUNTY, MISSISSIPPI

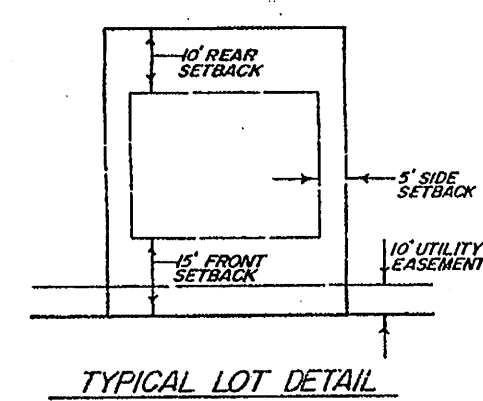
SURVEYED AND MAPPED BY
BAILEY ENGINEERING & LAND SURVEYING, LLC
2112 CROSSBRIDGE BLVD.
JACKSON, MISSISSIPPI
SCALE: 1"=100'



| CURVE DATA | | |
|-----------------|-----------------|-----------------|
| A. A= 02°55'49" | B. A= 37°29'32" | C. A= 38°50'38" |
| R= 343.24' | R= 190.68' | R= 240.68' |
| L= 17.55' | L= 124.77' | L= 163.17' |

Note: This property is not located in a special Flood hazard according to FIRM Community Panel No. 280142 0135 B (panel not printed) Dated June 16, 1993.

A 10 Feet Wide Utility Easement (Not Shown) Is Located Along And Adjacent To All Street Rights-of-Way. Additional Easements Are As Shown And May Overlap Said 10 Feet Wide Utility Easement In Certain Areas.

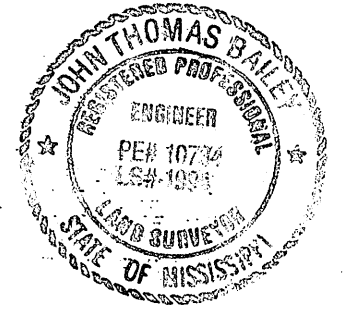


SURVEYORS CERTIFICATE STATE OF MISSISSIPPI COUNTY OF RANKIN

I, J. Thomas Bailey, Registered Land Surveyor, do hereby certify that at the request of Patrick Farms Development, LLC, the owner, I have subdivided and platted the following described parcel of land lying and being situated in the Southeast Quarter (SE1/4) of the Southeast Quarter (SE1/4) of Section 23, Township 5 North, Range 2 East, Rankin County, Mississippi. Commence at the southeast corner of the Northeast Quarter of Section 26, Township 5 North, Range 2 East, Rankin County, Mississippi; run thence West for a distance of 358.45 feet to a point; run thence North for a distance of 3104.03 feet to a point marking the northwest corner of Lot 21 Patrick Farms, Phase One, Part Three, a subdivision according to a map or plat thereof on file and of record in the office of the Chancery Clerk of Rankin County at Brandon, Mississippi in Plat Cabinet C at Slot 127 and the southwest corner of Lot 31 Patrick Farms, Phase Five, Part One, a subdivision according to a map or plat thereof on file and of record in said office of the Chancery Clerk in Plat Cabinet D at Slot 66, reference to both of which is hereby made in aid of and as a part of this description, said point being the Point of Beginning for the description of a parcel of land described as follows: Run thence Northwest and along the west lines of said Patrick Farms, Phase Five, Part One as follows: run thence North 34 degrees 26 minutes 39 seconds West for a distance of 85.59 feet to a point; run thence North 27 degrees 44 minutes 03 seconds West for a distance of 215.65 feet to the northwest corner of said Patrick Farms, Phase Five, Part One, said point being on the south line of Patrick Farms, Phase Four, Part One, a subdivision according to a map or plat thereof on file and of record in said office of the Chancery Clerk of Rankin County in Plat Cabinet D at Slot 38, reference to which is hereby made in aid of and as a part of this description, run thence along said south line of said Patrick Farms, Phase Four, Part One as follows: run thence South 62 degrees 15 minutes 57 seconds West for a distance of 79.21 feet to a point; run thence South 30 degrees 34 minutes 45 seconds West for a distance of 258.26 feet to a point; run thence South 17 degrees 03 minutes 28 seconds West for a distance of 66.85 feet to a point; run thence South 07 degrees 43 minutes 29 seconds West for a distance of 111.59 feet to a point; run thence, leaving said south line of Patrick Farms, Phase Four, Part One, South 16 degrees 51 minutes 39 seconds East for a distance of 124.61 feet to a point on the north line of said Patrick Farms, Phase One, Part Three; run thence Northeasterly and along said north line of Patrick Farms, Phase One, Part Three as follows: run thence North 55 degrees 57 minutes 10 seconds East for a distance of 119.43 feet to a point; run thence North 61 degrees 08 minutes 33 seconds East for a distance of 52.57 feet to a point; run thence North 68 degrees 38 minutes 52 seconds East for a distance of 100.00 feet to a point; run thence North 34 degrees 10 minutes 48 seconds East for a distance of 196.85 feet to the Point of Beginning, containing 2.70 acres, more or less.

Witness my signature on this the 16 day of December, 2005.

J. Thomas Bailey, R.L.S. No. 1994



CERTIFICATE OF OWNERSHIP STATE OF MISSISSIPPI COUNTY OF RANKIN

I, Larry L. Johnson, Manager of Patrick Farms Development, LLC, do hereby certify that Patrick Farms Development, LLC, is the Owner of the Lands described in the foregoing Certificate of J. Thomas Bailey, Registered Land Surveyor, and that acting as the duly authorized official of said company, I have caused the same to be subdivided and platted as PATRICK FARMS, PHASE FIVE, PART TWO and do hereby dedicate the roads, streets, rights-of-way to the County of Rankin for public use forever.

Witness my signature on this the 16 day of December, 2005.

Larry L. Johnson, Manager

CERTIFICATE OF COMPARISON STATE OF MISSISSIPPI COUNTY OF RANKIN

We, Murphy Adkins, Chancery Clerk, and J. Thomas Bailey, Registered Land Surveyor, do hereby certify that we have carefully compared this plat of PATRICK FARMS, PHASE FIVE, PART TWO with the original thereof, and find it to be a true and correct copy of said plat.

Given under my hand and seal of office on this the 27 day of Dec, 2005.

J. Thomas Bailey, R.L.S. No. 1994

MURPHY ADKINS
RANKIN CO. CHANCERY CLK.
By *[Signature]* D.C.
Murphy Adkins, Chancery Clerk



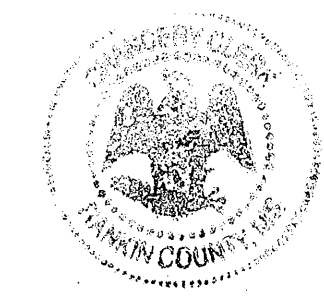
FILING AND RECORDATION STATE OF MISSISSIPPI COUNTY OF RANKIN

I, Murphy Adkins, Clerk of the Chancery Court in and for said County and State, do hereby certify that this plat of PATRICK FARMS, PHASE FIVE, PART TWO was filed for record in my office on this the 27 day of Dec, 2005 and was duly recorded in Cabinet D at Slot 174 of the records of maps and plats of land of Rankin County, Mississippi.

Given under my hand and seal of office on this the 27 day of Dec, 2005.

Murphy Adkins
Murphy Adkins, Chancery Clerk

P. Myers, D.C.
Deputy Clerk



APPROVAL OF THE BOARD OF SUPERVISORS STATE OF MISSISSIPPI COUNTY OF RANKIN

The above plat of PATRICK FARMS, PHASE FIVE, PART TWO is hereby approved by the Board of Supervisors of Rankin County, Mississippi, pursuant to the authority of an order and resolution of said Board duly adopted on the 16 day of December, 2005.

Witness our signatures this the 16 day of December, 2005.

RANKIN COUNTY BOARD OF SUPERVISORS

President

Charles S. Parker, County Engineer

ACKNOWLEDGMENT STATE OF MISSISSIPPI COUNTY OF RANKIN

Personally appeared before me, the undersigned authority in and for said county and state, on this the 16 day of December, 2005, within my jurisdiction, the within named LARRY L. JOHNSON, who acknowledged that he is Manager of PATRICK FARMS DEVELOPMENT, LLC, and as its act and deed, he executed the above and foregoing certificate, after first being duly authorized so to do, and J. Thomas Bailey, Registered Land Surveyor, who acknowledged to me that he signed and delivered this plat and the certificate hereon as his own act and deed, on the day and year therein mentioned.

Given under my hand and seal of office on this the 16 day of December, 2005.

Notary Public

Notary Public State of Mississippi At Large
My Commission Expires: March 7, 2007
Bonded Thru Helden, Brooks & Garland, Inc.
My commission Expires:

