

# Truck Crane AK 48

## AK 48e



### Technical Data

Permissible gross vehicle weight [t]	26 (27)
Max. payload [kg]	3.000 (opt. 6.000)
Max. extension length [m]	49 (opt. 52)
Working height up to jib [m]	34.7
Jib hydraulically extendable [m]	6.3 - 14.4 (opt. 17.4)
Jib payload [kg]	3,000 - 1,000 (500)
Boom angle [degrees]	90
Jib angle [degrees]	180
Pivoting range [degrees]	endless
Hook speed [m/min]	60
Range for crane operation at 500 kg [m]	32.8
Range for crane operation at 1 t [m]	28.5
Range for crane operation at 2 t [m]	19.6
Range for crane operation at 3 t [m]	15.4
Range for crane operation at 4 t [m]	11.1
Range for crane operation at 6 t [m]	8.5
Range / Working height max. [m]	
with non-rotating basket 250 kg	34.5 / 49.5
with rotating basket 250 kg (PK 250-D)	33.8 / 49.5
with rotating basket 350 kg (PK 350-D)	29.5 / 45.7
with rotating basket 600 kg (PK 600-D)	25.8 / 43.6
Drive	E-PTO or PTO / 400 V hybrid



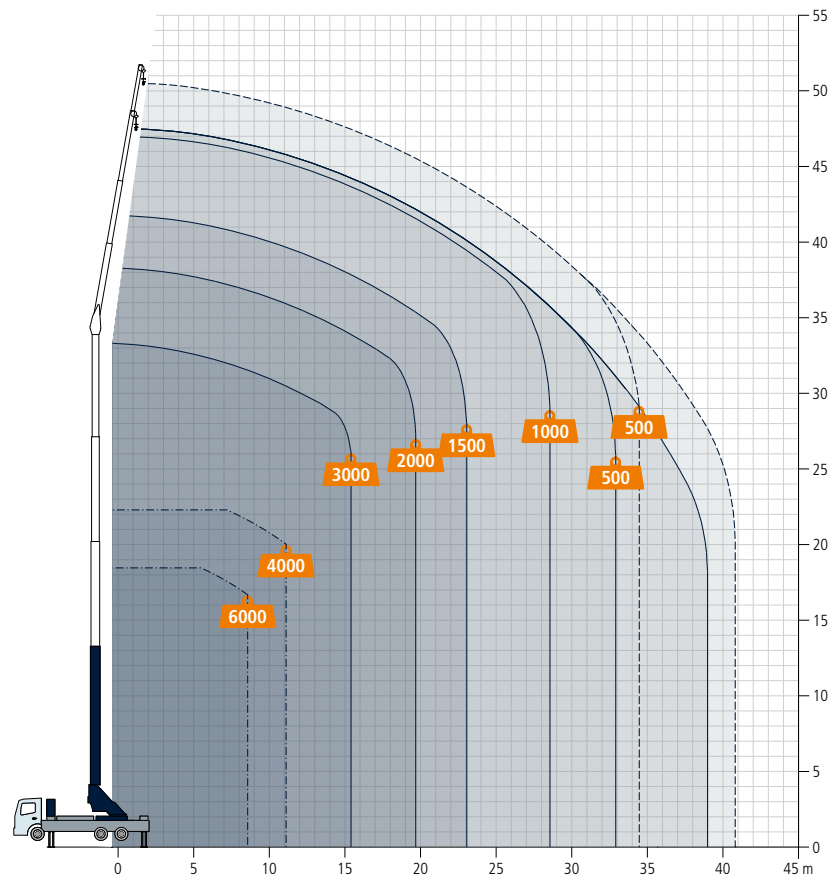
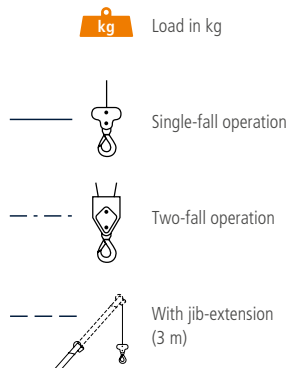
The AK 48 truck crane impresses with a wide range of drive concepts, its innovative boom design, outstanding speeds and the latest control technology. Thanks to its power the crane lifts payloads up to 3 t (opt. 6 t) and provides extension lengths up to 49 m (opt. 52). Converted into a mobile working platform, the AK 48 is designed for large basket loads up to 600 kg. The powerful hydraulic system ensures quick set-up, hook speeds of 60 m/min and a high working speed.

The boom can be set up completely vertical at a 90° angle to the vehicle. In addition, the aluminium boom, which can be hydraulically extended to over 14 m, can be erected in a 180° position with the joint fully extended. In tower crane mode the AK 48 telescopes loads directly into a building thanks to a right-angled jib position.

Available with **Böcker**Connect

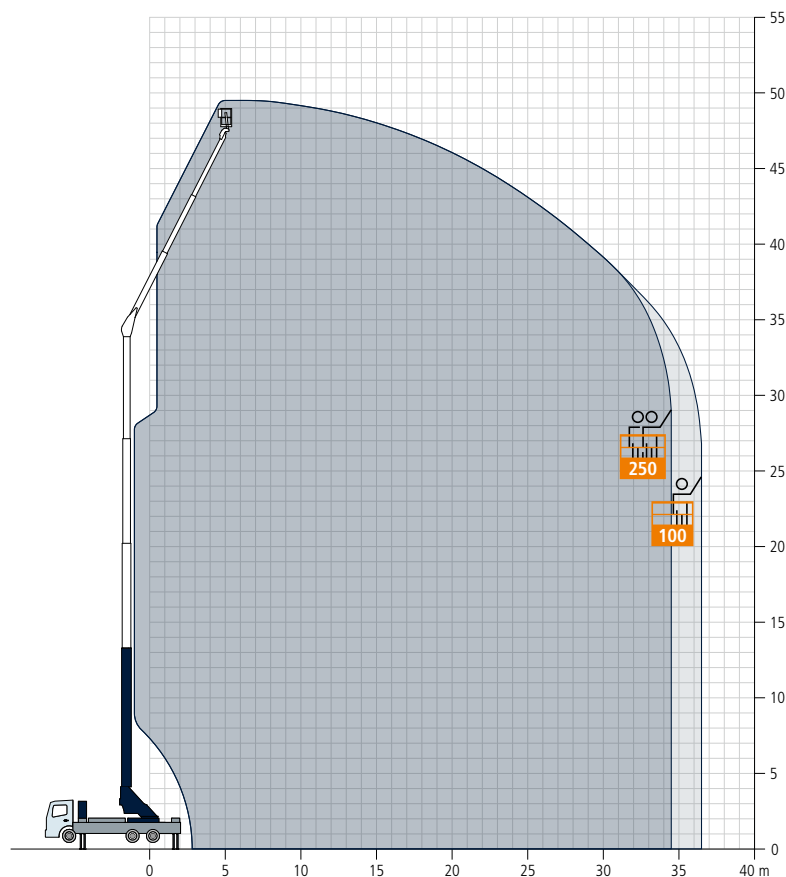
**Böcker**  
MY WAY TO THE TOP

## Working range crane operation



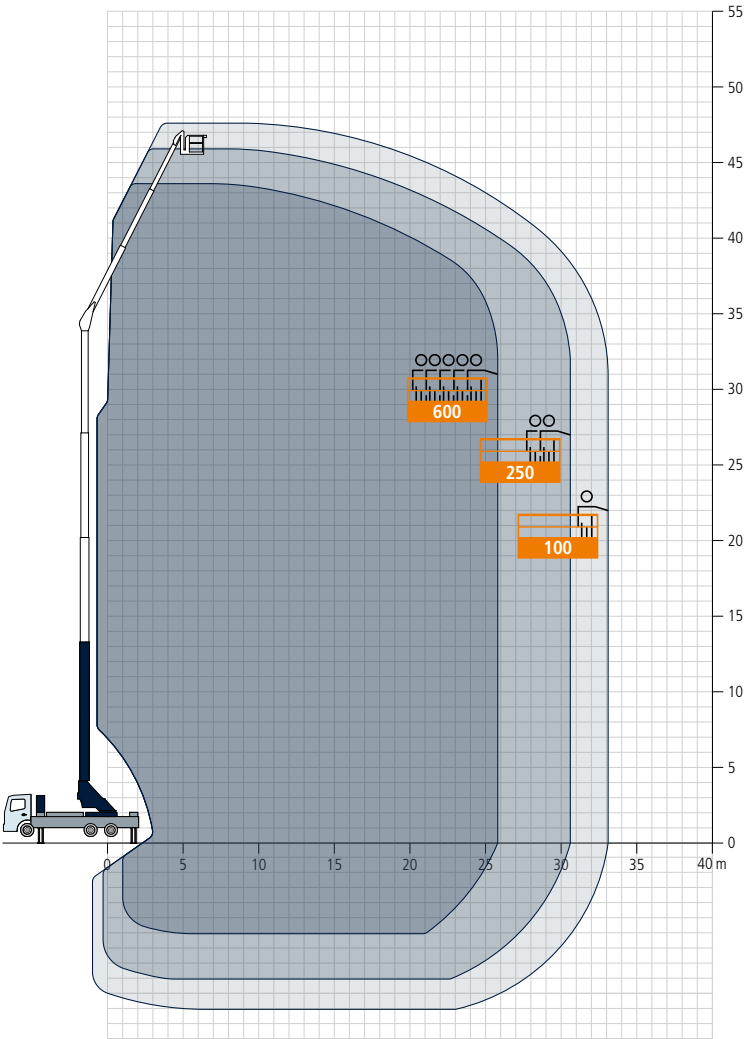
## Working range platform operation

Non-rotating basket PK 250-1

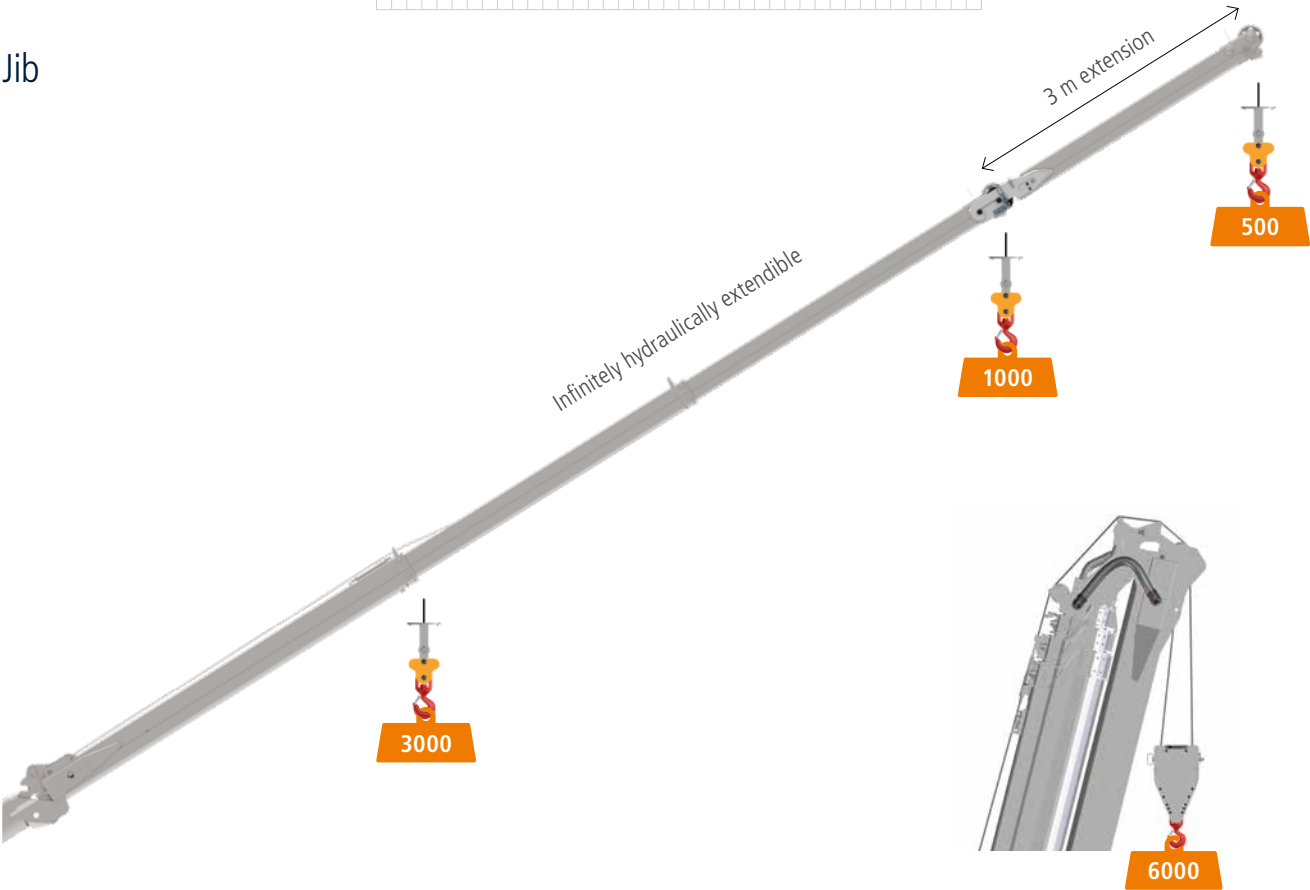


# Working range platform operation

Rotating and extendible  
work basket PK 600-D

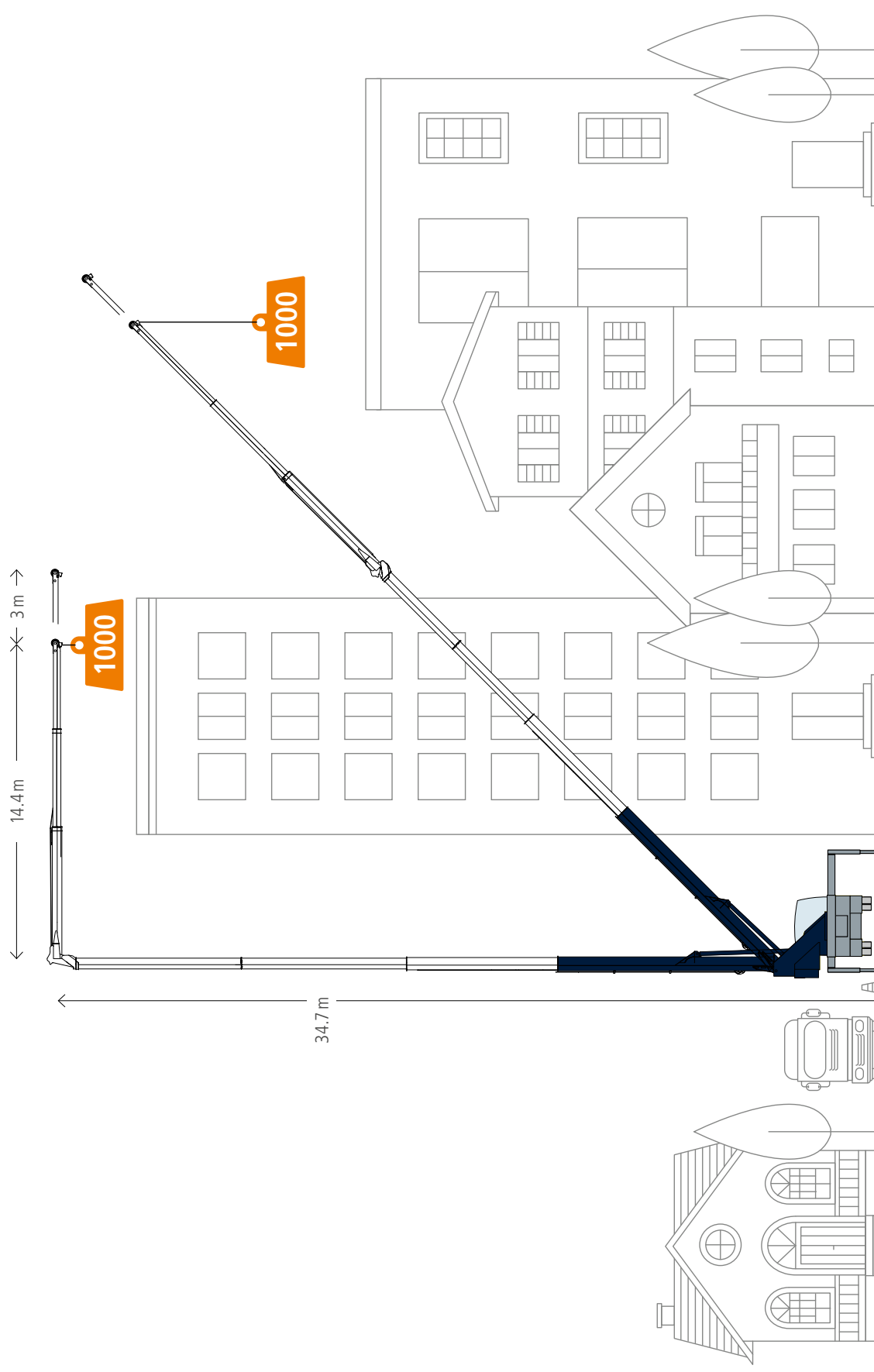


## Jib

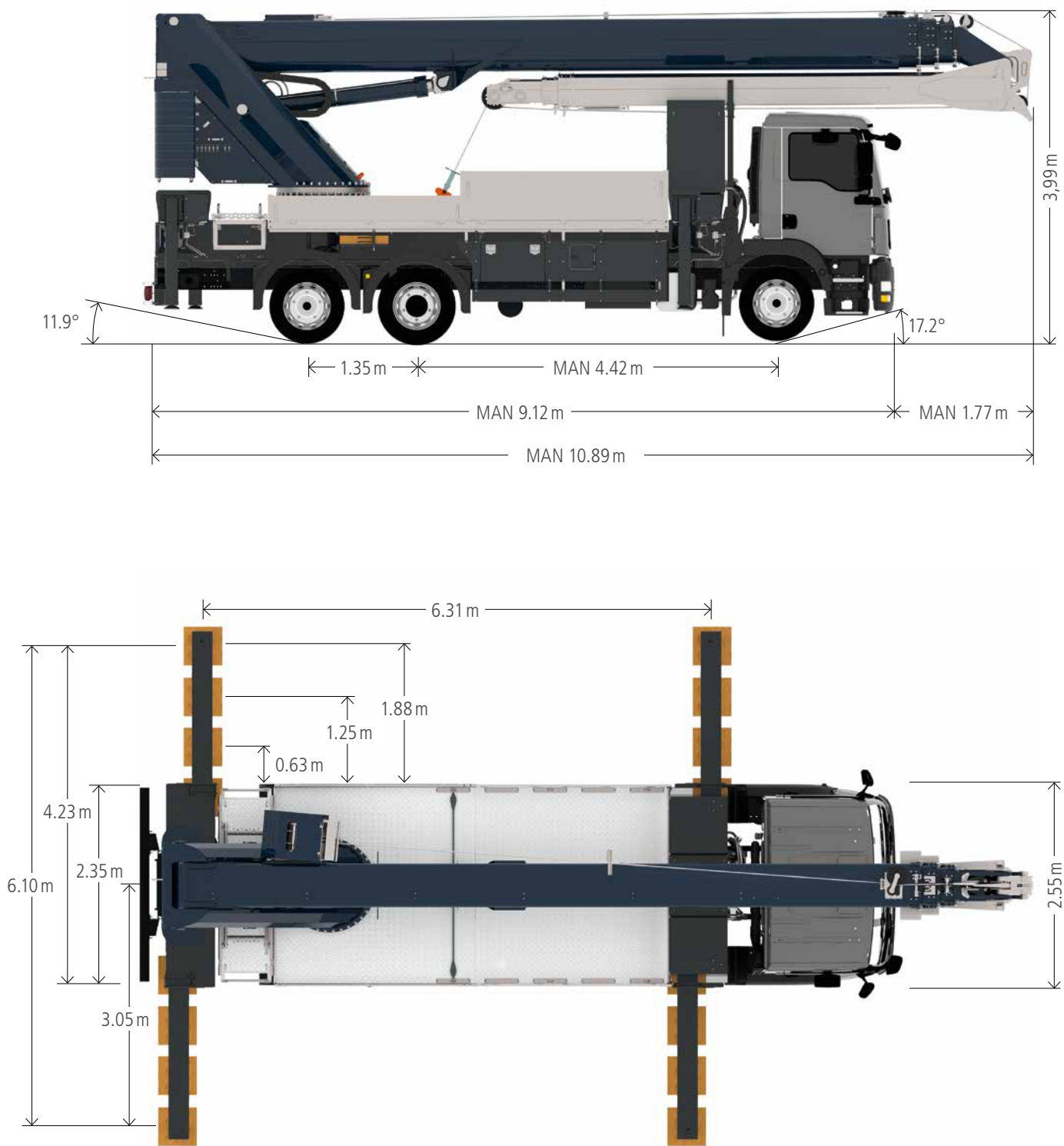


Preliminary data. All weights in kg, all measurements subject to fluctuation.

## Working area



Dimensions



Preliminary data. All weights in kg, all measurements subject to fluctuation.

# Böcker

[www.boecker.co.uk](http://www.boecker.co.uk)

**Boecker UK Limited**

Unit B Grazebrook Industrial Park  
Hulbert Drive, Dudley  
West Midlands UK-DY2 0XW

Fon +44 1384 476580  
[info@boecker.co.uk](mailto:info@boecker.co.uk)