

# THE COLLEGE EQUITY INDEX BLUE BOOK



BY  
COLLEGE EQUITY FIRST,  
INC.

106

COLLEGES

THE  
COLLEGE  
EQUITY  
INDEX™



By College Equity First, Inc.  
[Collegeequityfirst.org](http://Collegeequityfirst.org)  
Dr. Monica E. Randall  
Dr. Debra Felix  
Ms. Sydney Montgomery  
Graphic Design by Zakiyyah Jones  
Copyright 2023

$$x = \frac{-b \pm \sqrt{b^2 - 4ac}}{2a}$$

# Welcome to The CEI Blue Book

Our goal is to provide Black students with information and resources to help them find colleges at which they will be safe, respected, and supported. We understand that navigating the college application process can be challenging. We hope that by providing this information, we can make the process a little better for Black students.



The Blue Book was developed with the mission of helping Black students avoid problematic college environments and find colleges at which they can thrive. We have compiled data on and curated evaluations of colleges and universities to show their level of commitment to access, affordability, diversity and inclusion, equity, and outcomes in their support of Black students.

We believe that every student deserves to feel welcomed and valued on their college campus. We hope that by using the Blue Book, Black students will be able to find colleges where they can succeed and be celebrated. Thank you for choosing to use the CEI Blue Book, and we hope it helps you find the perfect college for your needs, desires and dreams.

# TABLE OF CONTENTS

How to Read the Blue Book .....	10
Glossary of Terms .....	11
American University .....	13
Amherst College .....	14
Bard College .....	15
Barnard College .....	16
Bates College .....	17
Baylor University.....	18
Bennett College .....	19
Boston College .....	20
Boston University .....	21
Bowdoin College .....	22
Brandeis University.....	23
Brown University .....	24
Bryn Mawr College .....	25
Bucknell University .....	26
Butler University .....	27
Carleton College .....	28
Carnegie Mellon University.....	29



# TABLE OF CONTENTS

Case Western University.....	30
Centre College .....	31
Clafin University .....	32
Claremont McKenna College.....	33
Clark Atlanta University .....	34
Colby College .....	35
Colgate University .....	36
College of the Holy Cross .....	37
Colorado College .....	38
Columbia University .....	39
Connecticut College.....	40
Cornell University .....	41
Dartmouth College .....	42
Davidson College .....	43
Denison University .....	44
DePaul University .....	45
Drexel University .....	46
Duke University .....	47

# TABLE OF CONTENTS

Elon University .....	48
Emory University .....	49
Fisk University .....	50
Fordham University .....	51
Franklin and Marshall College .....	52
Furman University .....	53
George Washington University .....	54
Georgetown University .....	55
Gettysburg College.....	56
Grinnell College .....	57
Hamilton College .....	58
Hampton University .....	59
Harvard University.....	60
Harvey Mudd College .....	61
Haverford College .....	62
Hofstra University .....	63
Howard University .....	64
Johns Hopkins University .....	65
Kenyon College .....	66



# TABLE OF CONTENTS

Lafayette College .....	67
Lehigh University .....	68
Lewis and Clark College .....	69
Loyola University Chicago .....	70
Massachusetts Institute of Technology.....	71
Middlebury College .....	72
Morehouse College .....	73
Mount Holyoke College .....	74
New York University .....	75
Northeastern University .....	76
Northwestern University .....	77
Oberlin College .....	78
Occidental College .....	79
Pepperdine University .....	80
Pitzer College .....	81
Pomona College .....	82
Princeton University .....	83
Rensselaer Polytechnic Institute .....	84
Rice University .....	85



# TABLE OF CONTENTS

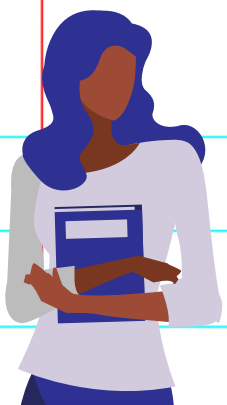
Roger Williams University .....	86
Santa Clara University .....	87
Scripps College .....	88
Skidmore College .....	89
Smith College .....	90
Spelman College .....	91
Stanford University .....	92
Swarthmore College .....	93
Syracuse University .....	94
The College of Wooster.....	95
Sewanee: The University of the South .....	96
Trinity College.....	97
Tufts University .....	98
Tuskegee University .....	99
University of Chicago .....	100
University of Miami .....	101
University of Notre Dame .....	102
University of Pennsylvania.....	103
University of Richmond .....	104



# TABLE OF CONTENTS



University of Rochester .....	105
University of Southern California .....	106
Vanderbilt University .....	107
Vassar College .....	108
Villanova University .....	109
Wake Forest University .....	110
Washington University in St. Louis .....	111
Wellesley College .....	112
Wesleyan University .....	113
Whitman College .....	114
Williams College .....	115
Worcester Polytechnic Institute.....	116
Xavier University of Louisiana .....	117
Yale University .....	118



# How to Read the Blue Book:

## College Equity Index

An easy way to evaluate colleges for Black students both objectively and relative to one another is through a calculation of scores. It includes 4 categories: Access and Affordability, Diversity, Campus Culture, and Outcomes

## Score Calculation

Below are the max and average scores from each component of the College Equity Index.

### Access and Affordability

Max points:

300 Pts

Avg Score:

209 Pts

### Campus Racial Climate

Max points:

250 Pts

Avg Score:

202 Pts

### Diversity

Max points:

275 Pts

Avg Score:

179 Pts

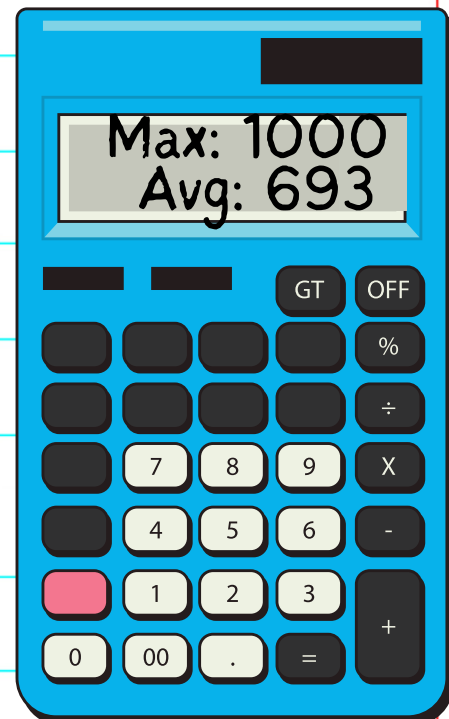
### Outcomes

Max points:

175 Pts

Avg Score:

103 Pts



# Glossary

## Access and Affordability

Measured by how well colleges include Black professionals in key offices, incorporate student-centered admissions policies, enroll low-income students, provide scholarships for underrepresented students, and provide an affordable net price after grants.

## Diversity

Measures include the percentage of Black and other minoritized students and faculty members at the college.

## Campus Culture

The measure of Campus Culture takes into account the college's membership in national organizations that foster campus diversity and student engagement; assesses the college's organizational and reporting structure; and the extent to which the college engages in anti-racism campaigns or initiatives.

## Outcomes

To determine outcomes for Black students, we examined the return on investment for students receiving federal student aid, graduation rates for Black students, and the percentage of degrees conferred to Black students at the college.



# Glossary



## Historically Black College/University

Historically Black College/University (HBCU) is a college or university that was originally founded to educate students of African American descent.

## Predominantly White Institution

Predominantly white institution (PWI) is the term used to describe institutions of higher learning in which whites account for 50% or greater of the student enrollment.

## Sundown Town

Thousands of communities kept out African Americans (or sometimes Chinese Americans, Jewish Americans, etc.) by force, law, or custom. These communities are sometimes called "sundown towns" because African Americans were forced to leave before nighttime came. Even though most sundown towns are "recovering" – that is, they no longer actively prohibit nonwhite residents – many still suffer from "second-generation sundown town issues." A recent study suggests that a college campus absorbs the culture of the geographic area surrounding it. Therefore, if a college is near a historical sundown town, it may be important to ascertain how much racism still exists in the area and how much that racism bleeds onto the college campus from the area adjacent to it.

# American University



Washington, D.C.

## Score

240 Access and Affordability

150 Diversity

225 Campus Culture

+125 Outcomes for Black Students

▲ Above  
Average  
Score

**740 Overall Score**

## Comments From Students

- A student writes. "Being black at AU truly is a struggle!"
- Another claims that the "accumulation of racial controversies leads to more events being viewed through the prism of race."
- Current students suggest that neither the White nor the Black community at AU is terribly welcoming.

Nearest Historical Sundown  
Town:

Chevy Chase, MD 4.2 miles.



# Amherst College

Amherst, Massachusetts

## Score

230 Access and Affordability

225 Diversity

175 Campus Culture

+ 135 Outcomes for Black Students

**765 Overall Score**

▲ Above Average Score

## Comments From Students

President has a solid anti-racism plan. Black students laud professors who have changed their lives.



Nearest Historical Sundown Town:  
Montague, MA 12 miles



# Bard College

Annandale-On-Hudson, New York



## Score

225 Access and Affordability

225 Diversity

175 Campus Culture

+ 100 Outcomes for Black Students

**725 Overall Score**

▲ Above  
Average  
Score

## Comments From Students/ Additional Info

"There is a lot of  
underground  
racism at Bard."

Lowest rating  
for prepping  
students for  
career success.

Nearest Historical Sundown  
Town:

Sharon, CT 32 miles.





# Barnard College

New York, New York

## Score

190 Access and Affordability

175 Diversity

175 Campus Culture

+ 115 Outcomes for Black Students

**655 Overall Score**

Below  
Average  
Score

## Additional Information

- Diverse faculty and student body.
- Women's college, more focused on sexism than racism.

Nearest Historical Sundown Town:

Bronxville, NY 14 miles.



# Bates College

Lewiston, Maine



## Score

190 Access and Affordability

175 Diversity

175 Campus Culture

+ 125 Outcomes for Black Students

▼ Below  
Average  
Score

**665 Overall Score**

## Comments From Students

While racism exists everywhere, even at the local Walmart, some faculty offer "safe spaces and love."

Nearest Historical Sundown Town:

Waterville, ME 54 miles.





# Baylor University

Waco, Texas

## Score

215 Access and Affordability

175 Diversity

175 Campus Culture

+ 75 Outcomes for Black Students

**635 Overall Score**

Below  
Average  
Score

## Comments From Students/ Additional Info

"Growing Allegations of Racism" are dealt with by encouraging the community to say "prayers for justice."

Above average student diversity for a PWI.

**Nearest Historical Sundown Town:**

Killeen, TX 60 miles.

# Bennett College

Greensboro, North Carolina



## Score

275 Access and Affordability

260 Diversity

150 Campus Culture

+ 105 Outcomes for Black Students

▲ Above  
Average  
Score

**790 Overall Score**

## Additional Information

- One of only two all-women Historically Black Colleges in the nation.
- Student body is small and shrinking.

Nearest Historical Sundown  
Town:

Mayodan, NC 36 miles.





# Boston College

Chestnut Hill, Massachusetts

## Score

190 Access and Affordability

135 Diversity

225 Campus Culture

+ 90 Outcomes for Black Students

**640 Overall Score**

Below  
Average  
Score

## Additional Information

168 Instagram posts citing widespread racism were subsequently untagged by the college.



Nearest Historical Sundown Town:

Brookline, MA 3 miles.





# Boston University

Boston, Massachusetts



## Score

190 Access and Affordability

150 Diversity

225 Campus Culture

+ 90 Outcomes for Black Students

▼ Below  
Average  
Score

**655 Overall Score**

## Additional Information

Racism is "baked in." but they established a very hopeful Center for Antiracist Research in June 2020.

**Nearest Historical Sundown Town:**

Brookline, MA 3 miles.



# Bowdoin College

Brunswick, Maine

## Score

190 Access and Affordability

175 Diversity

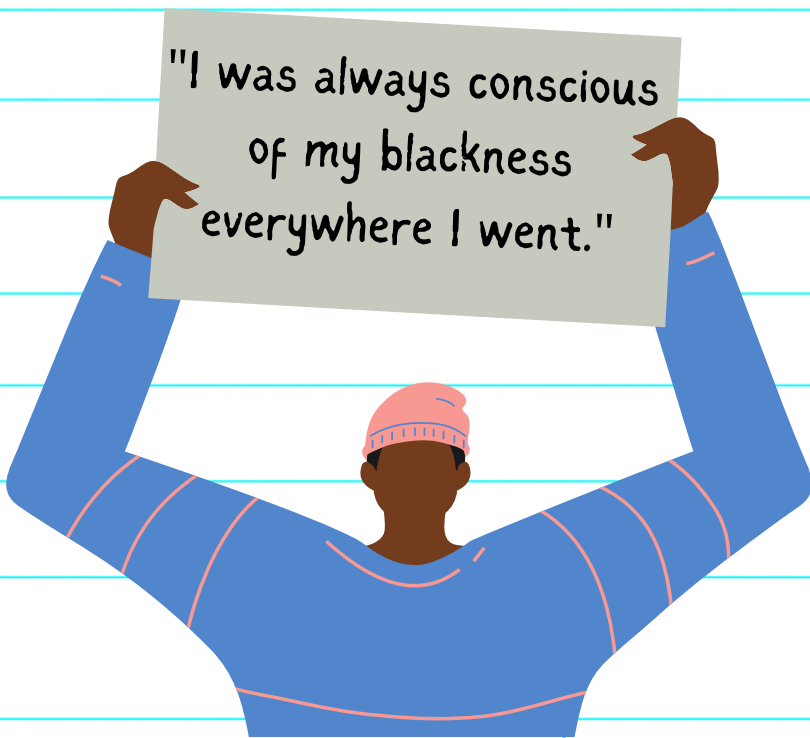
200 Campus Culture

+ 125 Outcomes for Black Students

**690 Overall Score**

Approximate  
Average Score

## Comments From Students



 Nearest Historical Sundown Town:  
Waterville, ME 54 miles



# Brandeis University

Waltham, Massachusetts



## Score

190 Access and Affordability

135 Diversity

175 Campus Culture

+ 60 Outcomes for Black Students

▼ Below  
Average  
Score

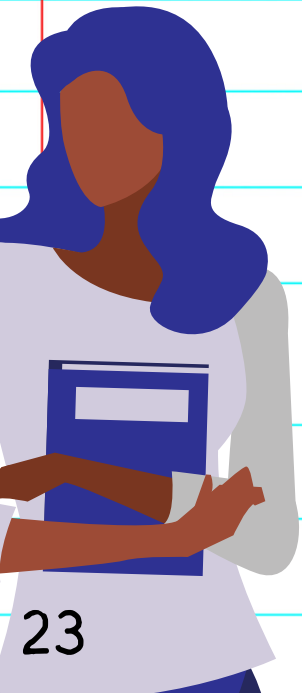
**560 Overall Score**

## Additional Information

Very, very low percentage of Black faculty (1.1%) and a low score on overall return on investment.

Nearest Historical Sundown Town:

Belmont, MA 5 miles





# Brown University

Providence, Rhode Island

## Score

165 Access and Affordability

175 Diversity

225 Campus Culture

+ 125 Outcomes for Black Students

**690 Overall Score**

Approximate  
Average Score

## Comments From Students



Racism reported at all levels - institutional, campus security, faculty, administration, and students.



Nearest Historical Sundown Town:

Cumberland, RI 15 miles.

# Bryn Mawr College

Bryn Mawr, PA



## Score

215 Access and Affordability

150 Diversity

175 Campus Culture

+ 125 Outcomes for Black Students

▼ Below  
Average  
Score

**665 Overall Score**

## Comments From Students/ Additional Info

"Not only less racist than any other place but...someone will always have your back."

Only 4%  
Black.

Nearest Historical Sundown  
Town:

Folcroft, PA 14 miles





# Bucknell University

Lewisburg, Pennsylvania

## Score

240 Access and Affordability

150 Diversity

225 Campus Culture

+ 115 Outcomes for Black Students

**730 Overall Score**

▲ Above  
Average  
Score

## Additional Information

Institutional racism and inappropriate behavior perpetrated by students, faculty, campus safety and neighbors

 Nearest Historical Sundown Town:

Selinsgrove, PA 12 miles.



# Butler University

Indianapolis, Indiana



## Score

190 Access and Affordability

125 Diversity

200 Campus Culture

+ 60 Outcomes for Black Students

▼ Below  
Average  
Score

**575 Overall Score**

## Comments From Professor

“ Black professor "felt relatively safe until someone set their 'Safe Space' sticker on their door on fire." ”

 Nearest Historical Sundown Town:

Speedway, IN 7 miles





# Carleton College

Northfield, Minnesota

## Score

190 Access and Affordability

175 Diversity

175 Campus Culture

+ 115 Outcomes for Black Students

**655 Overall Score**

▼ Below Average Score

## Comments From Students

Students criticize administrative response to a January 2021 video of a student chanting loudly, "F\*ck Black Lives Matter."



### Nearest Historical Sundown Town:

Cannon Falls, MN 14 miles.

The nearest large city is Minneapolis, where George Floyd was killed.



# Carnegie Mellon University



Pittsburgh, Pennsylvania

## Score

215 Access and Affordability

125 Diversity

175 Campus Culture

+ 90 Outcomes for Black Students

**605 Overall Score**

Below  
Average  
Score

## Additional Information

- Very few Black faculty.
- 2020 "Actions Against Racism" plan declared insufficient by 215 faculty members.



Nearest Historical Sundown  
Town:

Equidistant from Allegheny, PA  
and Millvale, PA 4 miles.





# Case Western University

Cleveland, Ohio

## Score

165 Access and Affordability

165 Diversity

250 Campus Culture

+ 60 Outcomes for Black Students

**640 Overall Score**

▼  
Below  
Average  
Score

## Additional Information

Low graduation rates for Black students and low overall return on investment.

Nearest Historical Sundown Town:  
Newburgh Heights, OH 6 miles



# Centre College

Danville, Kentucky



## Score

215 Access and Affordability

140 Diversity

225 Campus Culture

+ 90 Outcomes for Black Students

**670 Overall Score**

Below  
Average  
Score

## Additional Information

Scores are below average on every measure except prepping students for career success.



Nearest Historical Sundown

Town:

Equidistant from Brodhead, KY  
and Liberty, KY 27 miles.



# Clafin University

Orangeburg, South Carolina

## Score

275 Access and Affordability

255 Diversity

175 Campus Culture

+ 65 Outcomes for Black Students

**770 Overall Score**

▲ Above  
Average  
Score

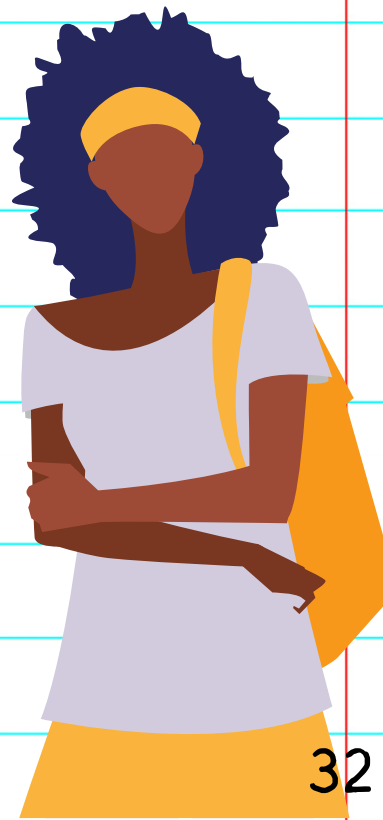
## Additional Information

- Historically Black University
- High Access & Affordability



Nearest Historical Sundown Town:

Shandon, SC 44 miles.



# Claremont McKenna College

Claremont, California



## Score

165 Access and Affordability

185 Diversity

200 Campus Culture

+ 90 Outcomes for Black Students

**640 Overall Score**

Below  
Average  
Score

## Additional Information

President signs 2020 Call to Action with peers acknowledging, "Our universities have not done enough."

 Nearest Historical Sundown Town:

Azusa, CA 14 miles



# Clark Atlanta University

Atlanta, Georgia.

## Score

275 Access and Affordability

255 Diversity

200 Campus Culture

+ 130 Outcomes for Black Students

Historically  
Black  
University.

**860 Overall Score**

▲ Above  
Average  
Score

## Additional Information

Collaborates with Morehouse and Spelman on racial equity efforts in Atlanta.



Nearest Historical Sundown  
Town:

Avondale Estates, GA 12 miles.





# Colby College

Waterville, Maine.



## Score

215 Access and Affordability

175 Diversity

250 Campus Culture

+ 90 Outcomes for Black Students

▲ Above  
Average  
Score

**730 Overall Score**

## Additional Information

- Will new Dean of Diversity make a difference?
- Very few Black students on campus.



Nearest Historical Sundown  
Town:

Fairfield, ME 4 miles





# Colgate University

Hamilton, New York

## Score

215 Access and Affordability

150 Diversity

250 Campus Culture

+ 115 Outcomes for Black Students

**730 Overall Score**

▲ Above Average Score

## Comments From Students

This is a very expensive college with moderately generous financial aid.

**NEWS**

A 2020 student-written article was entitled, "Incident. Protest. Email. Repeat: The Exhausting Cycle of Racism at Colgate."

The college has only 4.7% Black faculty and a below average percentage of Black students at 4.5%.



### Nearest Historical Sundown Town:

Whitesboro, NY 27 miles



# College of the Holy Cross

Worcester, Massachusetts

## Score

215 Access and Affordability

120 Diversity

250 Campus Culture

+ 115 Outcomes for Black Students



▲ Above  
Average  
Score

**700 Overall Score**

## Comments From Students

The one positive post on Instagram is from a white student thanking Black students for opening his eyes.



Nearest Historical Sundown  
Town:

Bolton, MA 22 miles.



# Colorado College

Colorado Springs, Colorado

## Score

190 Access and Affordability

175 Diversity

175 Campus Culture

+ 115 Outcomes for Black Students

**655 Overall Score**

Below  
Average  
Score

## Additional Information

President's 12/20 update shows robust anti-racist plan. Local police say BLM protestors should be killed.



Nearest Historical Sundown Town:

Colorado Springs, CO 0 miles

# Columbia University

New York, NY



## Score

180 Access and Affordability

200 Diversity

175 Campus Culture

+ 125 Outcomes for Black Students

---

680 Overall Score

Below  
Average  
Score

## Additional Comments

Nearly 80% of Black students' reports on Instagram are about faculty or administrators saying or doing racist things.



Nearest Historical Sundown Town:

Bronxville, NY 14 miles



# Connecticut College

New London, Connecticut.

## Score

215 Access and Affordability

150 Diversity

225 Campus Culture

+ 100 Outcomes for Black Students

**690 Overall Score**

Approximate  
Average Score

## Additional Information

Very few Black students. Has now introduced a plan of action to reduce racism on and around campus.



Nearest Historical Sundown

Town:

Montville, Ct 7 miles

# Cornell University

Ithaca, New York.



## Score

165 Access and Affordability

200 Diversity

225 Campus Culture

+ 125 Outcomes for Black Students

▲ Above  
Average  
Score

**715 Overall Score**

## Comments From Students

Conservative student groups sparked online harassment, death threats to minority students via doxxing.



Nearest Historical Sundown  
Town:

West Elmira, NY 36 miles





# Dartmouth College

Hanover, New Hampshire

## Score

165 Access and Affordability

150 Diversity

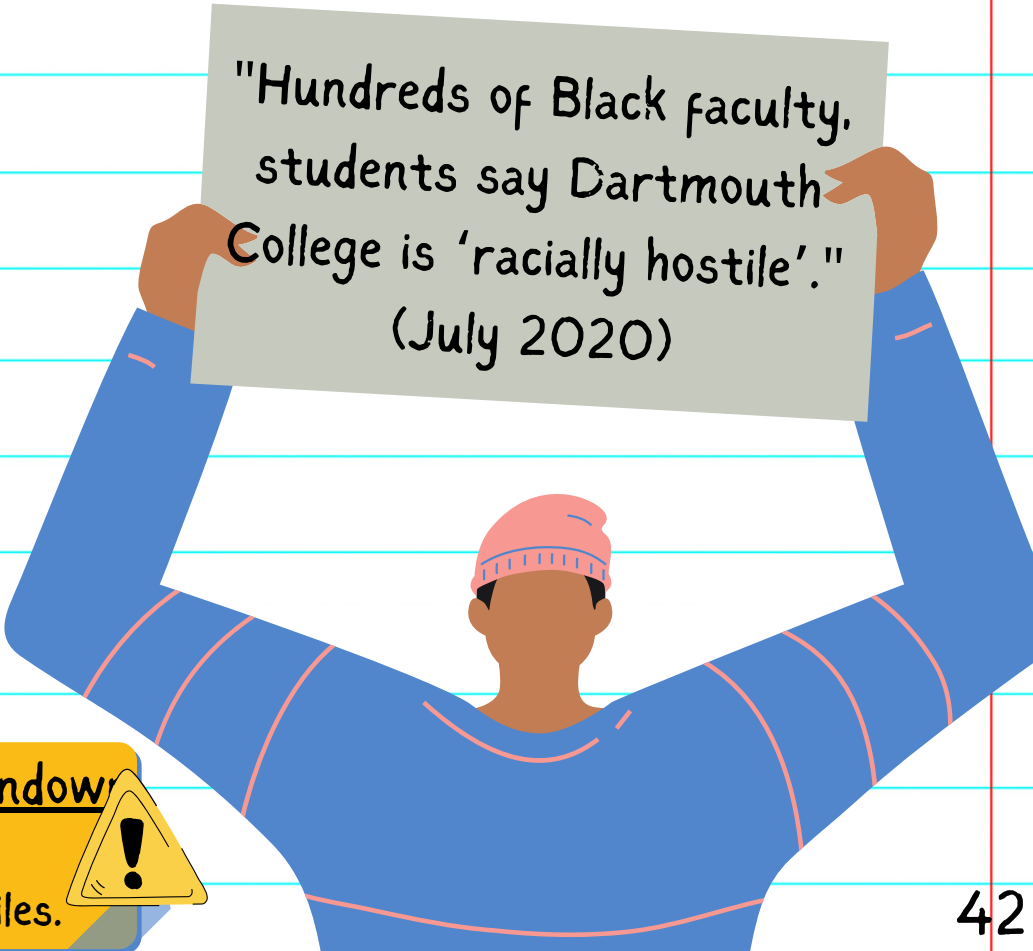
200 Campus Culture

+ 100 Outcomes for Black Students

**615 Overall Score**

Below  
Average  
Score

## Comments From Students



"Hundreds of Black faculty, students say Dartmouth College is 'racially hostile'."  
(July 2020)

Nearest Historical Sundown Town:  
Tundbridge, VT 32 miles.





# Davidson College

Davidson, North Carolina



## Score

215 Access and Affordability

150 Diversity

175 Campus Culture

+ 70 Outcomes for Black Students

▼ Below  
Average  
Score

**610 Overall Score**

## Comments From Students

Some good Black leadership, but "people don't realize the extent of racism that exists at Davidson."



Nearest Historical Sundown Town:

Faith, NC 32 miles





# Denison University

Granville, Ohio

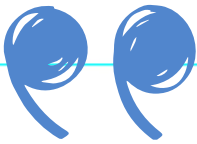
## Score

215 Access and Affordability  
150 Diversity  
200 Campus Culture  
+ 125 Outcomes for Black Students

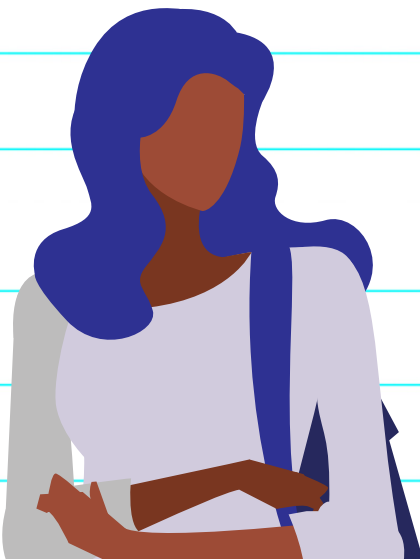
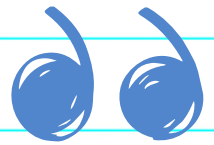
**690 Overall Score**

Approximate  
Average Score

## Comments From Students



"Being Black at a school like Denison comes with so many challenges...I often feel out of place."



Nearest Historical Sundown Town:

Johnstown, OH 11 miles

# DePaul University

Chicago, Illinois



## Score

225 Access and Affordability

175 Diversity

250 Campus Culture

+ 70 Outcomes for Black Students

**720 Overall Score**

▲ Above  
Average  
Score

## Comments From Students/ Additional Info

"DePaul students criticize  
reportedly racist culture."  
(August 2020)

Very low  
overall  
return on  
investment.

Nearest Historical Sundown  
Town:

Cicero, IL 10 miles





# Drexel University

Philadelphia, Pennsylvania

## Score

255 Access and Affordability

150 Diversity

200 Campus Culture

+ 70 Outcomes for Black Students

**675 Overall Score**

▼ Below Average Score

## Additional Information

Art, Film, and Music departments are criticized for knowing little about non-white artists and art.



Nearest Historical Sundown Town:  
Folcroft, PA 10 miles

# Duke University

Durham, North Carolina



## Score

190 Access and Affordability

200 Diversity

200 Campus Culture

+ 100 Outcomes for Black Students

**690 Overall Score**

Approximate  
Average Score

## Additional Information

"Black students matriculate to Duke at lower rate than white students." (39% of Black students admitted matriculate vs. 68% of white students)



Nearest Historical Sundown Town:

Mayodan, NC 88 miles

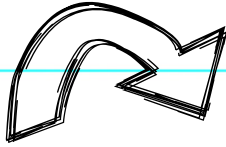




# Elon University

Elon, North Carolina

## Score



Lowest  
access.

150 Access and Affordability

135 Diversity

225 Campus Culture

+ 125 Outcomes for Black Students

**635 Overall Score**

Below  
Average  
Score

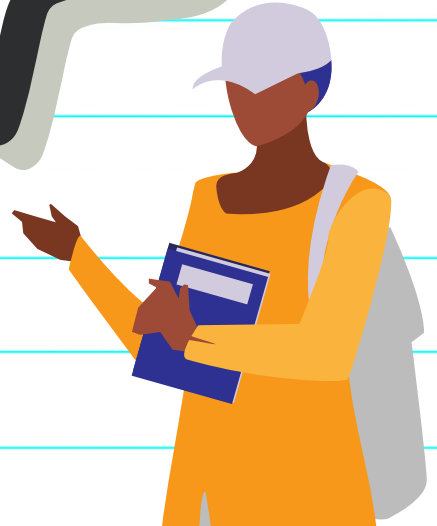
## Comments From Students

"I submitted a bias report, but that system doesn't actually do anything to foster change."



Nearest Historical Sundown Town:

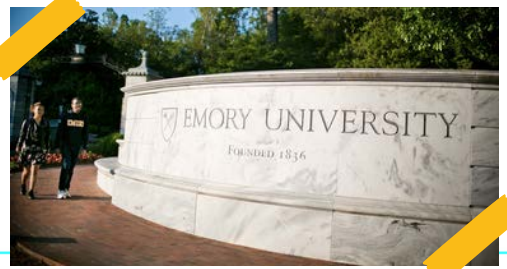
Mayodan, NC 42 miles





# Emory University

Atlanta, Georgia



## Score

215 Access and Affordability

175 Diversity

250 Campus Culture

+ 100 Outcomes for Black Students

---

**740 Overall Score**

▲ Above  
Average  
Score

## Additional Information

- Above average percentages of Black students and faculty for a PWI.
- Overall Return on Investment score is very low.



Nearest Historical Sundown  
Town:

Avondale Estates, GA 5 miles



# Fisk University

Nashville, Tennessee

## Score

250 Access and Affordability

255 Diversity

125 Campus Culture

+ 130 Outcomes for Black Students

**760 Overall Score**

▲ Above  
Average  
Score

## Additional Information

Black and White  
football coaches  
and players  
produced "take  
action" video.

Historically  
Black  
University.



Nearest Historical Sundown  
Town:

Greenbrier, TN 24 miles

# Fordham University

The Bronx, NY



## Score

190 Access and Affordability

175 Diversity

200 Campus Culture

+ 60 Outcomes for Black Students

▼ Below  
Average  
Score

**625 Overall Score**

## Comments From Students/ Additional Info

"I had white roommates who used the N word all the time."

Black students graduate at lower rates.

Nearest Historical Sundown Town:

Bronxville, NY 8 miles

# Franklin and Marshall College

Lancaster, Pennsylvania



## Score

215 Access and Affordability

115 Diversity

250 Campus Culture

+ 100 Outcomes for Black Students

**680 Overall Score**

Below  
Average  
Score

## Comments From Faculty

- Very few Black faculty members  
College's VP acknowledges that  
racism faces "every college  
campus."



Nearest Historical Sundown  
Town:

Conestoga, PA 8 miles

# Furman University

Greenville, South Carolina



## Score

215 Access and Affordability

150 Diversity

250 Campus Culture

+ 70 Outcomes for Black Students

**685 Overall Score**

Approximate  
Average Score

## Comments From Students/ Additional Info

I feel underestimated and treated like "aliens."

Black students graduate at much lower rates

Nearest Historical Sundown Town:

Princeton, SC 36 miles





# George Washington University

Washington, DC



## Score

190 Access and Affordability

200 Diversity

200 Campus Culture

+ 100 Outcomes for Black Students

**690 Overall Score**

Approximate  
Average Score

## Comments From Students

"Black students call out racism on campus following the University President's comments"



Nearest Historical Sundown  
Town:

Mt. Rainier 6 miles





# Georgetown University

Washington, D.C



## Score

165 Access and Affordability

175 Diversity

225 Campus Culture

+ 125 Outcomes for Black Students

**690 Overall Score**

Approximate  
Average Score

## Additional Information

- Very low overall Return on Investment.
- Professor faked being Black in 2020.
- "Black students [here] deserve better."
- Student video entitled "I Can't Breathe." details the sorts of prejudice and stereotypes students face daily.



Nearest Historical Sundown  
Town:

Chevy Chase, MD 7 miles



# Gettysburg College

Gettysburg, Pennsylvania

## Score

230 Access and Affordability

135 Diversity

200 Campus Racial Climate

+ 60 Outcomes for Black Students

**625 Overall Score**

Below  
Average  
Score

## Additional Information

- Black students graduate at lower rates.
- Shops in town sell Confederate bathing suits, sheets, and flags.



Nearest Historical Sundown  
Town:

Adams County, PA 3 miles



# Grinnell College

Grinnell, Iowa



## Score

215 Access and Affordability

150 Diversity

225 Campus Culture

+ 115 Outcomes for Black Students

**705 Overall Score**

▲ Above  
Average  
Score

## Comments From Students

- President acknowledges "systemic racism, anti-Blackness, aversive racism, and white supremacy."
- The Des Moines Register reported on Oct. 9, 2022, at least 14 cars parked on a campus lot and signs nearby were covered with racist and white supremacist graffiti
- "Black students have also been the targets of racial harassment since the semester began, including white drivers yelling racial slurs at them on and off campus."



Nearest Historical Sundown

Town:

Brooklyn, IA 15 miles



# Hamilton College

Clinton, NY

## Score

165 Access and Affordability

175 Diversity

225 Campus Culture

+ 125 Outcomes for Black Students

**690 Overall Score**

Approximate  
Average Score

## Comments From Students

Black students say they do not feel their voices matter or that their opinions and experiences are important.



Nearest Historical Sundown  
Town:

Whitesboro, NY 8 miles



# Hampton University



Hampton, Virginia

## Score

250 Access and Affordability

255 Diversity

125 Campus Culture

+ 135 Outcomes for Black Students

▲ Above  
Average  
Score

**765 Overall Score**

## Additional Information

Hampton fired nine police officers over 'mysoginist, racist' posts.

Historically  
Black  
University.



Nearest Historical Sundown Town:

Poquoson, VA 13 miles





# Harvard University

Cambridge, Massachusetts

## Score

190 Access and Affordability

225 Diversity

200 Campus Culture

+ 135 Outcomes for Black Students

---

**750 Overall Score**

▲ Above  
Average  
Score

## Comments From Students

Black students notice that graduate students, who teach most of their classes, unfairly give them lower grades.



Nearest Historical Sundown  
Town:

Brookline, MA 3 miles



# Harvey Mudd College

Claremont, California



## Score

165 Access and Affordability

200 Diversity

175 Campus Culture

+ 50 Outcomes for Black Students

**590 Overall Score**

Below  
Average  
Score

## Additional Information

- Retaining Black students is an issue.
- Students are "alarmed by the failure" of the college to address its issues.



Nearest Historical Sundown  
Town:

Azusa, CA 14 miles





# Haverford College

Haverford, Pennsylvania

## Score

215 Access and Affordability

200 Diversity

200 Campus Culture

+ 100 Outcomes for Black Students

▲ Above  
Average  
Score

**715 Overall Score**

## Additional Information

Half the microaggressions on campus are attributed to faculty and administrators, the other half to peers.



Nearest Historical Sundown Town:

Folcroft, PA 18 miles



# Hofstra University

Hempstead, New York



## Score

230 Access and Affordability

200 Diversity

225 Campus Culture

+ 70 Outcomes for Black Students

▲ Above  
Average  
Score

**725 Overall Score**

## Additional Information

- Poor friendship development and preparation for career success.
- "[Change] means fixing behavior."



Nearest Historical Sundown  
Town:

Levittown, NY 5 miles



# Howard University

Washington, DC

## Score

275 Access and Affordability

275 Diversity

200 Campus Culture

+ 155 Outcomes for Black Students

**905 Overall Score**



## Comments From Faculty/ Additional Info

President says proper funding of HBCUs will improve diversity in academia.

Historically Black University.



Nearest Historical Sundown Town:

Chevy Chase, MD 8 miles

# Johns Hopkins University

Baltimore, Maryland



## Score

190 Access and Affordability

225 Diversity

175 Campus Culture

+ 125 Outcomes for Black Students

▲ Above  
Average  
Score

**715 Overall Score**

## Comments From Students/ Additional Info

"We need our University to be taking action."

Above average diversity among students and faculty

Nearest Historical Sundown Town:

Savage, MD 22 miles





# Kenyon College

Gambier, Ohio

## Score

225 Access and Affordability

175 Diversity

225 Campus Culture

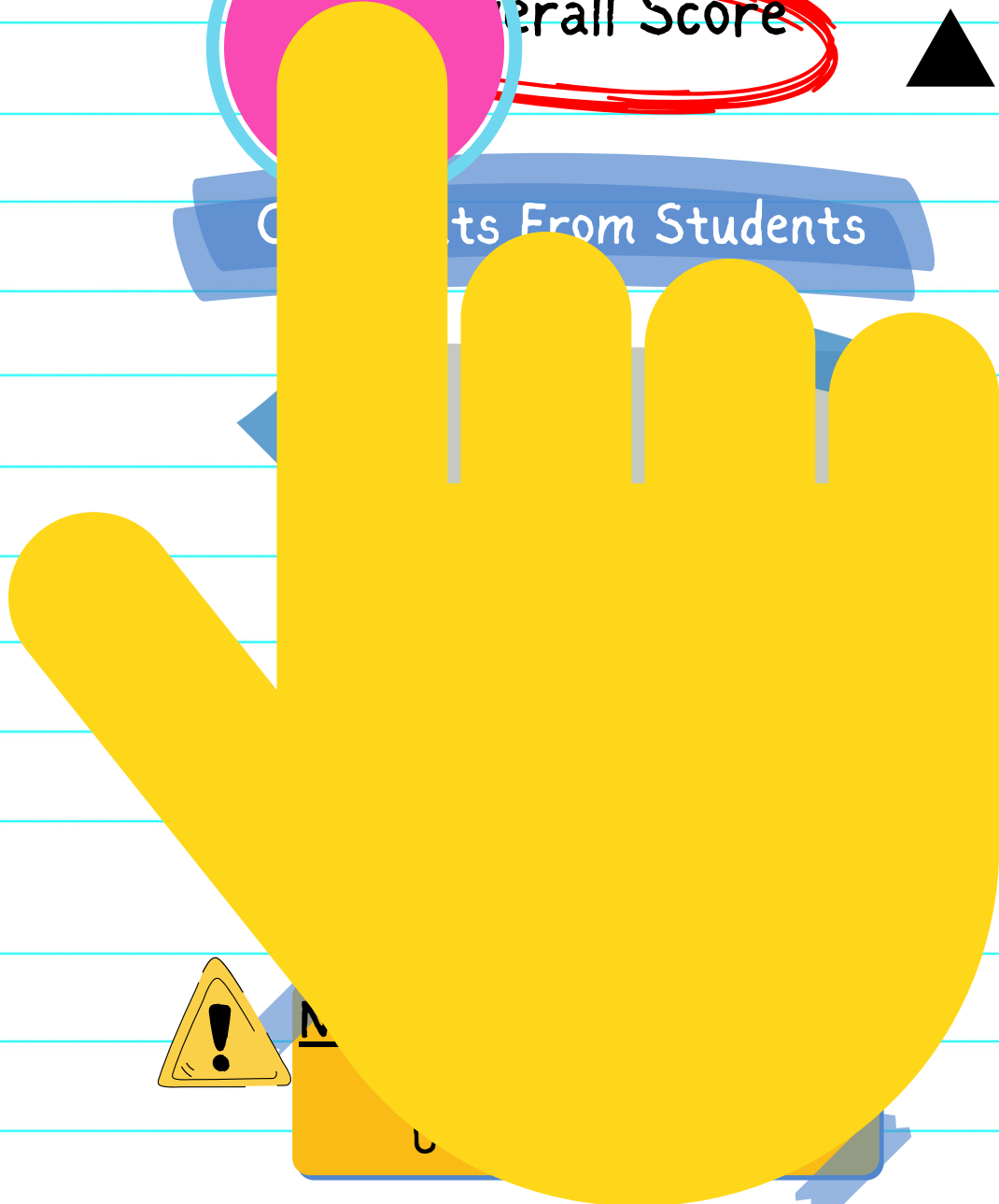
+ 115 Outcomes for Black Students



Overall Score

▲ Above Average Score

## Comments From Students



# Lafayette College

Easton, Pennsylvania



## Score

215 Access and Affordability

150 Diversity

200 Campus Culture

+ 115 Outcomes for Black Students

▼ Below  
Average  
Score

**680 Overall Score**

## Comments From Faculty

A professor reports that students of color are "intentionally targeted" by White students.



Nearest Historical Sundown  
Town:

Nazareth, PA 8 miles



# Lehigh University

Bethlehem, Pennsylvania

## Score

215 Access and Affordability

125 Diversity

200 Campus Culture

+ 115 Outcomes for Black Students

**655 Overall Score**

Below  
Average  
Score

## Additional Information

- Very few Black students and professors
- Low score for spiritual development
- Typical racism reported.



Nearest Historical Sundown Town:

Nazareth, PA 14 miles

# Lewis and Clark College

Portland, Oregon



## Score

205 Access and Affordability

155 Diversity

175 Campus Culture

+ 95 Outcomes for Black Students

**630 Overall Score**

Below  
Average  
Score

## Comments From Students

In 2020, Lewis & Clark College engaged in mandatory racial segregation in its first-year orientation program.



Nearest Historical Sundown Town:

Lake Oswego, OR 3 miles





# Loyola University Chicago

Chicago, Illinois

## Score

225 Access and Affordability

175 Diversity

225 Campus Culture

+ 60 Outcomes for Black Students

**715 Overall Score**

▲ Above Average Score

## Additional Information

- Very low overall return on investment
- Black students graduate at a much lower rate than classmates.



Nearest Historical Sundown Town:

Wolflake, IL 6 miles



# Massachusetts Institute of Technology

Cambridge, Massachusetts



## Score

190 Access and Affordability

185 Diversity

225 Campus Culture

+ 70 Outcomes for Black Students

▼ Below  
Average  
Score

**670 Overall Score**

## Comments from Students

- Black students lament a lack of Black peers.
- There are "decent" barbers and support
- classmates use the "N" word.



Nearest Historical Sundown  
Town:

Brookline, MA 3 miles



# Middlebury College

Middlebury, Vermont

## Score

190 Access and Affordability

150 Diversity

175 Campus Culture

+ 115 Outcomes for Black Students

---

**630 Overall Score**

Below  
Average  
Score

## Additional Information

Very few Black students, and the lowest overall racial diversity (7.3% URM) of all the colleges.

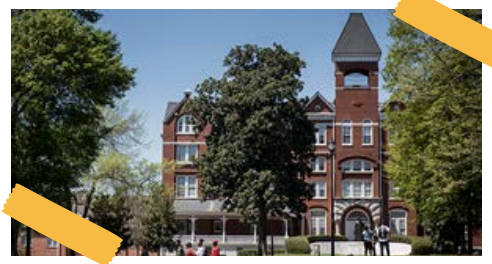


Nearest Historical Sundown Town:

Tunbridge, VT 52 miles

# Morehouse College

Atlanta, Georgia.



## Score

275 Access and Affordability

255 Diversity

125 Campus Culture

+ 135 Outcomes for Black Students

**790 Overall Score**

▲ Above  
Average  
Score

## Additional Information

- Historically Black University.
- Largest men's liberal arts college in the U.S.
- Students say that there is some "colorism" there..



Nearest Historical Sundown  
Town:

Avondale Estates, GA 11 miles





# Mount Holyoke College

South Hadley, Massachusetts

## Score

230 Access and Affordability

175 Diversity

200 Campus Culture

+ 70 Outcomes for Black Students

**675 Overall Score**

Below  
Average  
Score

## Comments From Students

Black students use their Instagram page to "uplift Black community members" who are suffering.



Nearest Historical Sundown Town:

Chicopee, MA 8 miles.

# New York University

New York, New York



## Score

190 Access and Affordability

200 Diversity

225 Campus Culture

+100 Outcomes for Black Students

**715 Overall Score**

▲ Above  
Average  
Score

$$a^2 = b^2 + c^2$$

## Additional Information

- Administrator Resigns, Citing Unchecked Racism.
- Low friendship development
- Low return on investment.



Nearest Historical Sundown  
Town:

Floral Park, NY 19 miles





# Northeastern University

Boston, Massachusetts

## Score

- 215 Access and Affordability
- 175 Diversity
- 200 Campus Culture
- + 60 Outcomes for Black Students

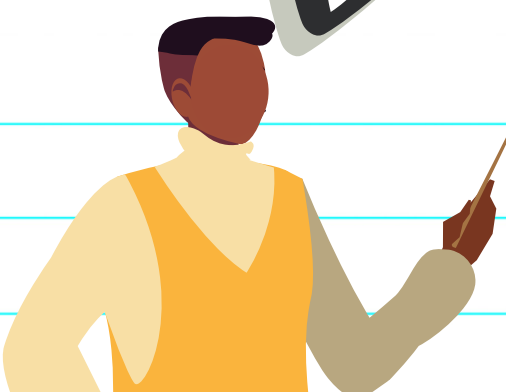
**650 Overall Score**

Below Average Score

## Comments From Students & Faculty

Dean says, "We need to do much more..." and has a new, robust anti-racist plan.

Student's say there is "a spiritually lacking culture."



Nearest Historical Sundown Town:  
Brookline, MA 2 miles



# Northwestern University



Evanston, Illinois

## Score

190 Access and Affordability

175 Diversity

225 Campus Culture

+ 125 Outcomes for Black Students

▲ Above  
Average  
Score

**715 Overall Score**

## Comments From Students

“A universe rife with opportunity, wealth, knowledge, racism and the ghosts of Native genocide.”

⚠️ Nearest Historical Sundown Town:  
Kenilworth, IL 3 miles





# Oberlin College

Oberlin, Ohio

## Score

200 Access and Affordability

175 Diversity

200 Campus Culture

+ 80 Outcomes for Black Students

---

**655 Overall Score** ▼

Below  
Average  
Score

## Comments From Students/ Additional Info

- Black athletes want to see more folks on campus who look like them.
- Relatively inexpensive after grants.



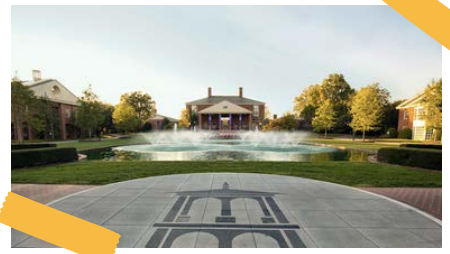
Nearest Historical Sundown

Town:

Amherst, OH 8 miles

# Occidental College

Los Angeles, California



## Score

215 Access and Affordability

175 Diversity

175 Campus Culture

+ 115 Outcomes for Black Students

**680 Overall Score**

▼ Below Average Score

## Comments From Students/ Additional Info

Black students state that "A movement is not a moment."

College's first Black President took office in July 2020.



Nearest Historical Sundown Town:  
Glendale, CA 3 miles





# Pepperdine University

Los Angeles County, California

## Score

215 Access and Affordability

200 Diversity

200 Campus Culture

+ 60 Outcomes for Black Students

**675 Overall Score**

Below  
Average  
Score

## Additional Information

- Very low access.
- Instagram posts show instances of professors discriminating against students of color.



Nearest Historical Sundown  
Town:

Inglewood, CA 24 miles



# Pitzer College

Claremont, California



## Score

190 Access and Affordability

200 Diversity

200 Campus Culture

+ 125 Outcomes for Black Students

▲ Above  
Average  
Score

**715 Overall Score**

## Additional Information

Black Student Union's 2020 list of ways to support Black Students is nearly identical to one from 1968.



Nearest Historical Sundown Town:

Azusa, CA 14 miles



# Pomona College

Claremont, California

## Score

230 Access and Affordability

225 Diversity

200 Campus Culture

+ 135 Outcomes for Black Students

**790 Overall Score**

▲ Above Average Score

## Comments From Students

To combat racism, white students are told to: "Be prepared to make mistakes. Listen and apologize. Make sure to change."



Nearest Historical Sundown Town:

Azusa, CA 14 miles



# Princeton University

Princeton, New Jersey



## Score

230 Access and Affordability

200 Diversity

200 Campus Culture

+125 Outcomes for Black Students

**755 Overall Score**



Above  
Average  
Score

$$a^2 = b^2 + c^2$$

## Additional Information

Of 48 Instagram posts analyzed, 43 were negative and 5 were positive. There were 38 complaints about inappropriate peers.



Nearest Historical Sundown  
Town:

Bordentown, NJ 17 miles

# Rensselaer Polytechnic Institute

Troy, New York



## Score

215 Access and Affordability  
150 Diversity  
200 Campus Culture  
+ 60 Outcomes for Black Students

---

**625 Overall Score**

▼ Below  
Average  
Score

## Comments From Students

- Very few Black students, very low spiritual development.
- Professor fired for racist media posts.



Nearest Historical Sundown  
Town:

Green Island, NY 1 mile



# Rice University

Houston, Texas



## Score

190 Access and Affordability

160 Diversity

200 Campus Culture

+ 125 Outcomes for Black Students

▼ Below  
Average  
Score

**675 Overall Score**

## Comments From Students

Students are lobbying for removal of prominent statue of white supremacist, slave-owning Founder.



Nearest Historical Sundown  
Town:

Jacinto City, TX 12 miles





# Roger Williams University

Bristol, Rhode Island



## Score

190 Access and Affordability

135 Diversity

200 Campus Culture

+ 115 Outcomes for Black Students

▼ Below  
Average  
Score

640 Overall Score

Comments From Students





# Santa Clara University

Santa Clara, California

## Score

190 Access and Affordability

165 Diversity

225 Campus Culture

+ 115 Outcomes for Black Students

Approximate  
Average Score

**695 Overall Score**

## Comments From Students

A CECE Model school, yet student says,  
"It's hard being Black in a school that  
has a history of mocking your culture."



Nearest Historical Sundown  
Town:

San Jose, CA 3 miles



# Scripps College

Claremont, California



## Score

190 Access and Affordability

175 Diversity

200 Campus Culture

+ 115 Outcomes for Black Students

▼ Below  
Average  
Score

**680 Overall Score**

## Comments From Students

"Scripps Students Call for Dean's Resignation Over Alleged Negligence, Anti-Black Behavior" July 2020.

⚠️ Nearest Historical Sundown Town:

Azusa, CA 14 miles



# Skidmore College

Saratoga Springs, New York

## Score

215 Access and Affordability

175 Diversity

225 Campus Culture

+ 125 Outcomes for Black Students

▲ Above  
Average  
Score

**740 Overall Score**

## Additional Information

Above the average number of Black students, but the lowest percentage of Black faculty of all the colleges.



Nearest Historical Sundown Town:

Saratoga Springs, NY 1 mile

# Smith College

Northampton, Massachusetts



## Score

230 Access and Affordability

200 Diversity

200 Campus Culture

+ 100 Outcomes for Black Students

$$a^2 = b^2 + c^2$$

▲ Above  
Average  
Score

**730 Overall Score**

## Additional Information

Custodian, who reported a Black student for being "out of place" while eating lunch in a dorm, was absolved.



Nearest Historical Sundown Town:

Chicopee, MA 18 miles





# Spelman College

Atlanta, Georgia

## Score

275 Access and Affordability

255 Diversity

175 Campus Culture

+ 135 Outcomes for Black Students

▲ Above  
Average  
Score

**840 Overall Score**

## Additional Information

- Historically Black College.
- Can be a financial stretch for many Black students even if they receive grants.
- Women's College



Nearest Historical Sundown Town:

Avondale Estates, GA 11 miles



# Stanford University

Stanford, California



## Score

215 Access and Affordability

170 Diversity

200 Campus Culture

+ 125 Outcomes for Black Students

▲ Above  
Average  
Score

**710 Overall Score**

## Comments From Students/ Additional Info

"Can I see your Stanford ID?  
There's been so much package  
theft recently."

Very  
expensive  
college, even  
after aid.



Nearest Historical Sundown  
Town:

Redwood City, CA 5 miles



# Swarthmore College

Swarthmore, Pennsylvania

## Score

205 Access and Affordability

225 Diversity

150 Campus Culture

+ 70 Outcomes for Black Students

**650 Overall Score**

Below  
Average  
Score

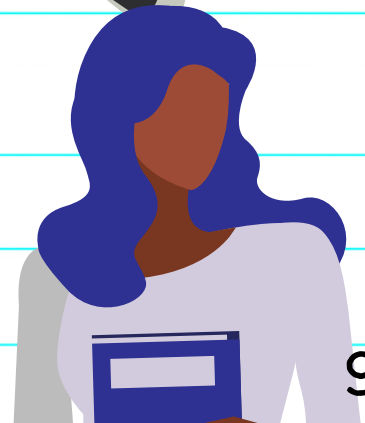
## Additional Info/ Comments From Students

First Black  
President  
installed in  
2015.

Many Black students refer to being Black on campus as an 'exhausting' experience.

 Nearest Historical Sundown  
Town:

Folcroft, PA 5 miles



# Syracuse University

Syracuse, New York



## Score

190 Access and Affordability

150 Diversity

225 Campus Culture

+ 125 Outcomes for Black Students

Approximate  
Average Score

**690 Overall Score**

## Comments From Students

Students report racist behavior by students, faculty, administrators, campus security and community members.



Nearest Historical Sundown Town:

Whitesboro, NY 50 miles



# The College of Wooster

Wooster, Ohio

## Score

240 Access and Affordability

175 Diversity

225 Campus Culture

+ 50 Outcomes for Black Students

Approximate  
Average Score

**690 Overall Score**

## Additional Information

- High scores for friendship development
- High overall return on investment as reported by alumni.



Nearest Historical Sundown Town:

Loudonville, OH 21 miles





# Sewanee: The University of the South

Sewanee, Tennessee

## Score

215 Access and Affordability

120 Diversity

225 Campus Culture

+ 125 Outcomes for Black Students

▼ Below  
Average  
Score

**685 Overall Score**

## Additional Information

- In 2021, student fans shouted racial epithets at members of a visiting team.
- A month earlier, the first Black vice chancellor of Sewanee disclosed that his home on campus had been repeatedly vandalized since he arrived.



Nearest Historical Sundown  
Town:

Tracy City, TN 13 miles





# Trinity College

Hartford, Connecticut

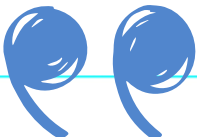
## Score

- 215 Access and Affordability
- 150 Diversity
- 225 Campus Culture
- + 125 Outcomes for Black Students

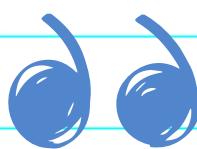
**715 Overall Score**

▲ Above Average Score

## Comments From Students



"[Typical for a PWI], racism is pervasive on campus - from the professors to the students."



Nearest Historical Sundown Town:  
Glastonbury, CT 12 miles

# Tufts University

Medford and Somerville, Massachusetts



## Score

190 Access and Affordability

175 Diversity

200 Campus Culture

+ 90 Outcomes for Black Students

**655 Overall Score**

Below  
Average  
Score

## Additional Information

"Another Tufts is Possible" web-based campaign is trying to address serious racial issues on campus.



Nearest Historical Sundown  
Town:

Belmont, MA 5 miles





# Tuskegee University

Tuskegee, Alabama

## Score

275 Access and Affordability

255 Diversity

150 Campus Culture

+ 130 Outcomes for Black Students

**810 Overall Score**



Above  
Average  
Score

## Additional Information

Leading producer of African-American aerospace and engineering graduates.

Historically  
Black  
University.



Nearest Historical Sundown Town:

Dixie, AL 147 miles

# University of Chicago

Chicago, Illinois



## Score

215 Access and Affordability

200 Diversity

200 Campus Culture

+ 60 Outcomes for Black Students

**675 Overall Score**

Below  
Average  
Score

## Comments From Faculty

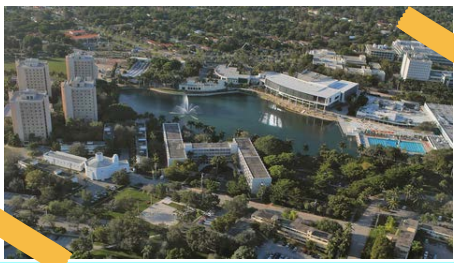
Highest percentage of Black faculty of all PWI's, yet Black professors say they "do not feel safe in our work environment."



Nearest Historical Sundown Town:

Oakland, IL 3 miles.





# University of Miami

Coral Gables, Florida

## Score

190 Access and Affordability

200 Diversity

150 Campus Culture

+100 Outcomes for Black Students

**640 Overall Score**



Below  
Average  
Score

## Additional Information

- Highest overall diversity among PWIs (30% URM).
- Members of a club on campus make offensive racist slurs and comments during their meetings, but the administration does not shut them down.



Nearest Historical Sundown  
Town:

Miami Beach, FL 15 miles



# University of Notre Dame



Notre Dame, Indiana

## Score

190 Access and Affordability

135 Diversity

175 Campus Culture

+ 90 Outcomes for Black Students

**590 Overall Score**

Below  
Average  
Score

## Comments From Students

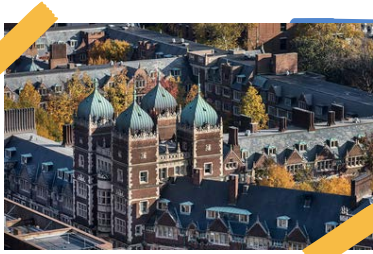
Alumni laud spiritual development while Black students tire of the presumption that they are all athletes.



Nearest Historical Sundown  
Town:

Mishawaka, IN 6 miles





# University of Pennsylvania

Philadelphia, Pennsylvania

## Score

165 Access and Affordability

175 Diversity

200 Campus Culture

+ 125 Outcomes for Black Students

**665 Overall Score**



Below  
Average  
Score

## Comments From Students/ Additional Info

"Black students, alumni allege pattern of racial profiling by Penn Police."

Very low score for spirituality.



Nearest Historical Sundown Town:

Folcroft, PA 9 miles

# University of Richmond



Richmond, Virginia

## Score

190 Access and Affordability

175 Diversity

225 Campus Culture

+ 100 Outcomes for Black Students

**690 Overall Score**

Approximate  
Average Score

## Comments From Students/ Additional Info

Black student says,  
"We are not wanted."

Racist incidents  
in January  
2020 made the  
news (NBC12).



Nearest Historical Sundown  
Town:

Colonial Heights, VA 30 miles



# University of Rochester

Rochester, New York

## Score

190 Access and Affordability

125 Diversity

225 Campus Culture

+ 100 Outcomes for Black Students

▼ Below  
Average  
Score

**640 Overall Score**

## Additional Information

- Falls short on nearly every measure.
- Students say "Racism Lives Here"
- Student website provides a forum for issues.



Nearest Historical Sundown  
Town:

Penfield, NY 9 miles





# University of Southern California

Los Angeles, California

## Score

230 Access and Affordability

200 Diversity

200 Campus Culture

+ 115 Outcomes for Black Students

▲ Above  
Average  
Score

**740 Overall Score**

## Comments From Students

Black students request reform of campus police, bias courses for peers, support for Black faculty.



Nearest Historical Sundown Town:

Inglewood, CA 15 miles



# Vanderbilt University

Nashville, Tennessee

## Score

190 Access and Affordability

225 Diversity

225 Campus Culture

+ 135 Outcomes for Black Students

▲ Above  
Average  
Score

**775 Overall Score**

## Additional Information

Since June 2020,  
about 200 sorority  
and fraternity  
members have left  
Greek Life due to  
systemic racism.



Nearest Historical Sundown  
Town:

Greenbrier, TN 25 miles



# Vassar College

Poughkeepsie, New York



## Score

205 Access and Affordability

175 Diversity

200 Campus Culture

+ 115 Outcomes for Black Students

**695 Overall Score**

Approximate  
Average Score

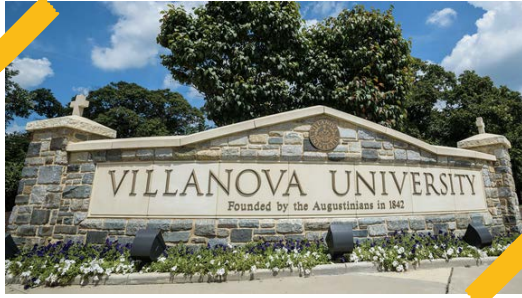
## Additional Information

As at many colleges, most reported incidents of racism on campus are perpetrated by fellow students.



Nearest Historical Sundown  
Town:

New Fairfield, CT 33 miles



# Villanova University

Villanova, Pennsylvania

## Score

215 Access and Affordability

140 Diversity

225 Campus Culture

+ 90 Outcomes for Black Students

**670 Overall Score**

Below  
Average  
Score

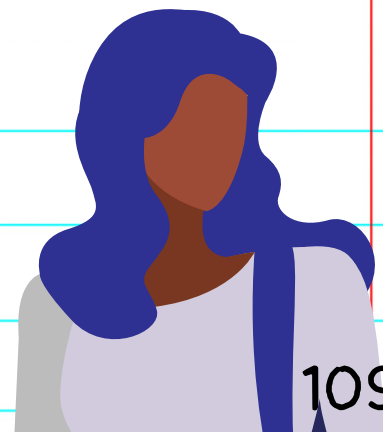
## Comments From Students

"[Black students'] academic abilities are undermined...with little intervention from the university."



Nearest Historical Sundown Town:

Folcroft, PA 20 miles



# Wake Forest University

Claremont, California



## Score

175 Access and Affordability

150 Diversity

250 Campus Culture.

+ 70 Outcomes for Black Students

**645 Overall Score**

Below  
Average  
Score

## Additional Information

Black students graduate at a lower rate than their non-Black peers.

**Nearest Historical Sundown  
Town:**

King, NC 13 miles





# Washington University in St. Louis

St. Louis, Missouri

## Score

215 Access and Affordability

200 Diversity

175 Campus Culture

+ 125 Outcomes for Black Students

▲ Above  
Average  
Score

**715 Overall Score**

## Additional Information

- Falls short on nearly every measure except that the university offers an institutional scholarship for minority students.



Nearest Historical Sundown  
Town:

Creve Coeur, MO 9 miles



# Wellesley College

Wellesley, Massachusetts



## Score

180 Access and Affordability

200 Diversity

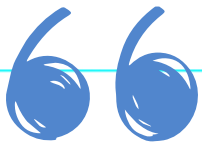
175 Campus Culture

+ 125 Outcomes for Black Students

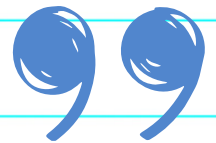
**680 Overall Score**

Below  
Average  
Score

## Comments From Students



- "Societies" (like Sororities) are not seen as welcoming
- "interpersonal and systemic racism" permeates.



Nearest Historical Sundown Town:

Dedham, MA 9 miles





# Wesleyan University

Middletown, Connecticut

## Score

190 Access and Affordability

175 Diversity

200 Campus Culture

+ 125 Outcomes for Black Students



**690 Overall Score**

Approximate  
Average Score

## Additional Information

Second highest overall number of stories (73) on Instagram about widespread racist behavior.



Nearest Historical Sundown Town:

Portland, CT 2 miles

# Whitman College

Walla Walla, Washington



## Score

190 Access and Affordability

130 Diversity

250 Campus Culture

+ 115 Outcomes for Black Students

---

**685 Overall Score**

Below  
Average  
Score

## Additional Information

The 6:00pm siren in town sounded from 1921-1974 to signal that "all the Indians and negros had to be out of town." It still sounds at 6:00 today, despite some residents' requests to silence it.



Nearest Historical Sundown  
Town:

Walla Walla, WA 0 miles



# Williams College

Williamstown, Massachusetts

## Score

205 Access and Affordability

200 Diversity

225 Campus Culture

+ 135 Outcomes for Black Students

**765 Overall Score**

▲ Above  
Average  
Score

## Additional Information

Received more complaints of racism on Instagram in 2020 than any other school on the list (100 posts).



Nearest Historical Sundown  
Town:

Delmar, NY 44 miles





# Worcester Polytechnic Institute

Worcester, Massachusetts

## Score

240 Access and Affordability

100 Diversity

200 Campus Culture

+ 60 Outcomes for Black Students

**600 Overall Score**

Below  
Average  
Score

## Comments From Students/ Additional Info

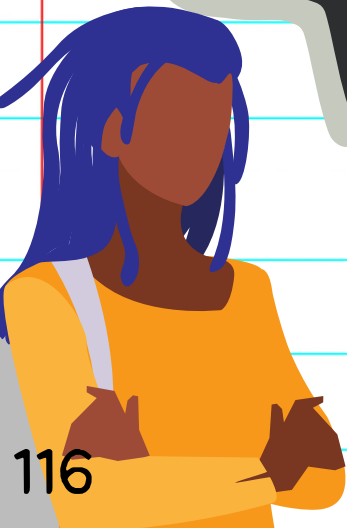
"WPI's culture creates traumatizing situations for students of color."

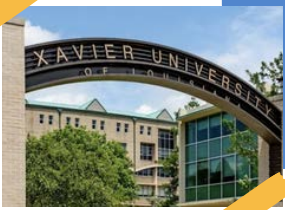
Very low on  
the NYT  
Access Index.



Nearest Historical Sundown  
Town:

Ashby, MA 33 miles





# Xavier University of Louisiana

New Orleans, Louisiana

## Score

275 Access and Affordability

275 Diversity

150 Campus Culture

+ 80 Outcomes for Black Students

**780 Overall Score**

▲ Above  
Average  
Score

## Additional Information

America's only  
Historically Black and  
Catholic University.



Nearest Historical Sundown  
Town:

Jean Lafitte, LA 25 miles

# Yale University

New Haven, Connecticut



## Score

215 Access and Affordability

200 Diversity

175 Campus Culture

+ 125 Outcomes for Black Students

▲ Above  
Average  
Score

**715 Overall Score**

## Additional Information

- A recent Director of Diversity quit due to an "oppressive status quo."
- The surrounding area has been in the news since 2001 for "its aggressively unwelcome attitude toward people of color."



Nearest Historical Sundown Town:  
East Haven 4 miles.

In 2014 in [East Haven], it was "Known by most blacks esp young black males and now Latinos not to travel through after dark."