

## AGENDA

### KANKAKEE RIVER METROPOLITAN AGENCY MEETING

Thursday, February 22, 2024

9:00 AM in KRMA Board Room

1600 Brookmont Blvd., Kankakee, IL 60901

- I. **Roll Call**
- II. **Public Comment**
- III. **Approval of Board Minutes**
  - A. January 12, 2024 – Special Board Meeting
  - B. January 25, 2024 – Regular Board Meeting
- IV. **Reports**
  - A. Operations & Maintenance Report
    1. Monthly Report (MOR)
  - B. Executive Director Report
    1. Water, Gas & Electric Use/Cost
    2. Hauled in Waste Summary
    3. Operations Report
  - C. Financial Report
    1. Reports
    2. Hauled in Waste Report
    3. Flows Graphs
  - D. Communications
- V. **Old Business**
  - A. Update on Engineering for Phase 1, Phase 2, Phase 3
- VI. **New Business**
  - A. Vote on whether to uphold Employee Grievance Decision
  - B. Draft Budget for Fiscal Year Ending April 30, 2025
  - C. Authorizing Executive Director to enter into negotiation with Union Representation Regarding Section 5 Step 3 of the Collection Bargaining Agreement
  - D. Local 399 Health & Welfare Management Rate Increase
- VII. **Executive Session**
  - A. Personnel & Probable or Imminent Litigation
- VIII. **Next Meeting**

Thursday, March 28, 2024 (9:00 AM in KRMA Boardroom)

**KANKAKEE RIVER METROPOLITAN AGENCY**  
**SPECIAL MEETING MINUTES**  
**January 12, 2024, at 1:30 P.M**

In attendance:

**Board of Directors:**

Mayor Christopher Curtis, City of Kankakee  
Mayor Paul Schore, Village of Bourbonnais  
Mayor Brian Stump, Village of Aroma Park (via GoToMeeting-Conference)  
Dir Robert Romo, Village of Bradley  
Alderman Danita Swanson, City of Kankakee  
Alderman Larry Osenga, City of Kankakee  
Steven Hunter, Representative, City of Kankakee

**Administration:**

Dave Tyson, KRMA Executive Director (via GoToMeeting-Conference)  
Karen Benson, Smith, Koelling, Dykstra & Ohm, P.C

**Attorney:**

Neal Smith, Robbins Schwartz (via GoToMeeting-Conference)

**KRMA Staff:**

Arthur Strother, Superintendent  
Dustin Schepler, Asst. Superintendent, Operations  
Melanie Gossett, Asst. Superintendent, Technical Services

**Other:**

Mayor Michael Watson, Alternate, Village of Bradley  
Daniel Smalls, Strand Associates  
Zachary Newton, City of Kankakee  
Ryan McGinnis, City of Kankakee

Chairman Mayor Christopher Curtis called the meeting to order. Noting that this is a special meeting.

I. **Roll Call**

Roll Call was taken. All Board members were present.

II. **Public Comment**

None.

III. **Board Consideration and Approval of Revising IEPA Project Plan to show splitting Phase 1 Improvements into two Phases (Phase 1A and 1B) and Fourth Aeration Train at North Site with Additional \$25M Project Cost**

Dan Small with Strand Associates gave a presentation regarding the revision of the IEPA Project Plan to show- Splitting Phase 1 Improvements into two (Phases 1A and 1B) and a fourth Aeration Train at the North Site with Additional \$25M Project Cost. Dan stated there are three main drivers for the modification: equipment replacement due to aging of equipment, address ammonia and solid violations as well as future ammonia limits coming up in regulatory items along with the ability to accommodate and serve the community growth.

Phase 1 without Bradley Property, approximate cost of \$9M, beginning design immediately and get advertise first quarter in 2025: Capital Repair/Equipment replacement, odor control, chemical control unit, existing motor replacements issues, and some electrical replacement issues throughout the plant.

Phase 2 without Bradley Property, approximate cost of \$38M, starting design in September 2025: Dealing with solid handling, new clarifiers, pumping station, rehabbing two storage tanks, equipment replacements, and mixed liquor splitter box to split flow between the existing and new clarifiers, which address your immediate needs.

Phase 3 with the assumption of half-acre of Bradley Property for the 4<sup>th</sup> Aeration Tank, approximate cost of \$28M, starting design in September 2025: New Aeration Tank and New Digester to handle the volume to deal with the ammonia within the growth with the communities. There were questions regarding all possibilities, benefits, future IEPA regulations for utilizing the new equipment, and timing of construction. There were also questions regarding the timing and difference in cost between phases. To be able to get on the IEPA loan funding list for July 2024, Phase 1 of Project Plan needs to be approved by March 2024, otherwise it will be locally funded. That is why it is important to get the process going.

Phase 3 without the Bradley Property and implementing IFAS (Integrated Fixed Film Activated Sludge, which provide additional biomass within a wastewater treatment facility to meet more stringent effluent parameters or increased loadings without the direct need for additional tankage), approximate cost \$34M or designing for the 4<sup>th</sup> Aeration Train to move to the North Site of the plant approximate cost \$53M. Dir Hunter, Dir Swanson, and Dir Osenga asked, is Village of Bradley willing to just sell half acre of their property and/or land swap. Dir Romo stated no. Mayor Watson stated he is looking for some policy changes for KRMA. Dir Romo expresses his opinion for being against the expansion. He stated he agreed to Phase 1 Capital repairs and equipment replacement and partial of Phase 2. He wants industries to start pretreating and feels the expansion is not needed. Chairman Curtis informed Dir Romo, that in 2020 IEPA was not regulating ammonia, however, currently they are therefore, ammonia is now a being monitored and it is not just coming from industrial it is also coming from residential. Dir Romo asked Dan Smalls how long his design is good for. Dan stated anything longer than two years needs to be revisited, because it depends on the equipment because there are always updates. Motion for consideration of approval to revise the IEPA Project Plan by splitting it into three Phases: Phase 1, Phase 2, and Phase 3 and increasing the amount from \$75 million to \$100 million plus engineering cost was made by Dir Swanson and seconded by Dir Osenga. Dir Romo stated he would vote yes to the \$9 million because it is replacing equipment, however, his vote for asking for \$105 million not knowing who is paying for it, he is not willing to do. Karen also expresses her concern for clarification that we are not asking for \$100 million from IEPA loans. All board member present: Vice Chairman Schore, Dir Hunter, Dir Osenga, Dir Swanson, and Chairman Curtis voted in favor of, and Dir Stump and Dir Romo voted, no.

IV. **Approval of Strand Associates Fee Proposal for Design Engineering for Phase 1A and Phase 1B**

Dan Small gave a brief overview of the Fee Proposal for Design Engineering for Phase 1A and Phase 1B.

V. **Approval of New Era Rate Increase for Hauled in Waste**

Motion to approve the New Era Spreading Rate increase as of January 1, 2024, to April 30, 2024, from .05 cents to .0625 cents per gallon was made by Dir Hunter and seconded by Vice Chairman Schore. All board members voted in favor of. Motion Carries.

VI. **Adjourn**

Motion to Adjourn was made by Dir Osenga and seconded by Vice Chairman Schore. All voted in favor. Motion Carried.

**KANKAKEE RIVER METROPOLITAN AGENCY**  
**MINUTES**  
**January 25, 2024 – 9:00 A.M**  
**1600 W Brookmont Blvd.**

In attendance:

**Board of Directors:**

Mayor Christopher Curtis, City of Kankakee  
Mayor Paul Schore, Village of Bourbonnais  
Financial Director Robert Romo, Village of Bradley  
Alderman Danita Swanson, City of Kankakee  
Alderman Larry Osenga, City of Kankakee  
Steven Hunter, Representative, City of Kankakee

**Administration:**

Dave Tyson, KRMA Executive Director  
Karen Benson, Smith, Koelling, Dykstra & Ohm, P.C

**Attorney:**

Neal Smith, Robbins Schwartz

**KRMA Staff:**

Arthur Strother, Superintendent  
Dustin Scheppler, Asst. Superintendent, Operations  
Melanie Gossett, Director of Technical Services

**Other:**

Dan Small, Strand Associates  
Tara Latz, Alternate, Village of Bourbonnais  
Terry Memenga, Alternate, Village of Bourbonnais  
Zachary Newton, Utility Superintendent, City of Kankakee  
Elizabeth Kubal, Comptroller, City of Kankakee

Chairman, Mayor Curtis called the meeting to order.

I. **Roll Call**

Roll Call was taken. All Board members were present, except for Dir Brian Stump absent.

II. **Public Comment**

None

III. **Approval of Board Minutes December 21, 2023 – Regular Board Meeting**

Motion to approve the December 21, 2023, Regular Board Meeting minutes was made by: Dir Osenga and seconded by Dir Hunter. Dir Osenga addressed a correction be made to in the attendance section: Alderman David Crawford was not in attendance for the December 21, 2023, Board Meeting, and Alderman Larry Osenga was present.

Vice Chairman Schore, Dir Hunter, Dir Osenga, Dir Swanson, and Chairman Curtis voted in favor of Dir Robert Romo voted abstained and Dir Brian Stump absent. Motion Carried.

IV. **Reports**

A. **Operations & Maintenance Report**

**Monthly Report**

Art informed the board that we had a violation with TSS. We are working with industry; we believe that caused this violation. Dustin explained what caused the violation and, in the future, before an unusual discharge, they will inform us. Dir Hunter asked do we have a protocol to address and prevent this from happening again. Dustin stated it may vary depending on the content and situation there are a lot of variables involved. Art added that we are in communication with them to make sure it does not happen again. Also, Art stated the plant needs to expand because we will have new IEPA regulations we have to meet that are not currently in our permit, we need to be prepared.

For instance, phosphorus, lower ammonia scale, monitoring, and testing for Pfas. Dir Romo asked are we currently monitoring for phosphorus and what are our limits? Art replied yes, and Dan added, the state bar limits for phosphorus is .5. Dir Hunter asked do we have a plan of correction, is there fines that can be placed on the industry who caused the violation? Yes, we already responded to the state regarding the violation. Chairman Curtis stated the city of Kankakee should be talking with them regarding the city ordinance which allows us to fine. Ryan and Zachery should also be notified when violations happen. Dan stated there is an Enforcement Response Plan to guide procedures and protocols and it is up to the Superintendent Industrial Service Coordinator how they want to address situations. Dir Romo asked, since KRMA has the permit, shouldn't KRMA be the one addressing them? Art replied, KRMA has the permit, however the municipalities own the collection system. If the State fine KRMA, KRMA will fine the municipality. Art presented the MOR and stated if you have any questions please contact Assistant Superintendent, Dustin Scheppler and/or me.

**B. Executive Director Report**

1. Water, Gas & Electric Use/Cost

Exec. Dir. Dave Tyson presented yearly utility usage. Exec Dir Tyson stated everything seems to be in line with our utilities.

2. Hauled In Waste Summary

Exec. Dir. Tyson stated there was an increase in hauled in waste this month due to the increase in Liberty and Livingston Landfill. He has not received any hauled in waste from Newton County.

3. Operations Report

Exec Dir Dave Tyson informed the board members in last month's safety meeting. Melanie had a guest speaker come in and give diversity training for all our staff. CMOM check list is due biannual instead of quarterly. CMOM's are due by the end of February 2024. Art added that work being done by the municipalities needs to be signed by your own employee, KRMA is just the overseer of the communities. When you have sanitary sewer overflow (SSO) backup to a home it should be reported to the state. If a resident informed, you that they have a backup it needs to be documented on an SSO form.

**C. Financial Report**

1. Reports

Karen presented the financial statements, stating the cash continues to be strong. Statement of Revenue/Expenses, hauled in waste is below monthly budget. Electrical expenses are higher than the budgeted amount. Also, the Change in Net Position is over the budget amount. Chairman Curtis asked are we using more electric. Art replied, we had some generator outages.

2. Hauled In Waste Report

None

3. Flows Graphs

Karen presented the flows report. Stated we are closer to the end of the fiscal year, and we can compare what we budget for the allocation of those operating expenses into the budget. Kankakee is at lower than estimated amount, Bourbonnais is higher than estimated amount, and Bradley is slightly over their estimated amount.

**D. Communications**

None

**V. Old Business**

**A. Bradley Property**

No update

1. Timeline for Sale of Bradley Property

None

**B. Discuss of Potential Expansion Options**

Vice Chairman Schore asked is there any industry out there that is not pretreating, if they would start to pretreat, would it make any difference on the need of the expansion. Art stated even if we make all industry pretreat, we will still need to expand, due to the new permits that are coming out and the expected growth within the communities. Once the Phosphorus becomes a requirement, we will need that fourth aeration train to help with many things. Dir Romo does not agree with the need for expansion regarding the expected growth of the communities. Dan stated the clarifiers are based off current solid loads. The pretreatment does not change the flows. The hydraulic flow will drive the need for the fourth aeration train. Even if there is no growth you will still need the clarifiers and fourth aeration train. There were rebuttals regarding the need for expansion, space needed for expansion, changes within the By-Laws, and who is going to be responsible for paying for it.

C. **Approval of Strand Associates Fee Proposal for Design Engineering for Phase 1, Phase 2, Phase 3**

Chairman Curtis wanted clarification that the fee proposal is not to exceed, and billed on an hourly basis, and it is not a contract? Vice Chairman also asked you will be billing monthly, and we can place a hold on process if needed. Dan responded to both questions stating this is correct; our monthly invoices will show our progress. Attorney Neal stated that it is two separate Fee Proposal, therefore, you can vote on them separately. Dir Romo stated he would like separate votes.

Motion to approve Strand Associates Fee Proposal for Design Engineering for Phase 1 (Exhibit 1) was made by Dir Swanson and seconded by Vice Chairman Schore. All board member present voted in favor of, and Dir Stump was absent. Motion carries.

Motion to approve Strand Associates Fee Proposal for Design Engineering for Phase 2 and Phase 3 (Exhibit 2) for \$4.2 million to \$5.69 million was made by Dir Hunter and seconded by Dir Osenga. Vice Chairman Schore when does these Phases commence. Dan stated it is not scheduled to start until September 2025. Dir Romo asked that the KRMA accountant put on the record what percentage of the expansion is being paid by what community and stated that he does not want Bradley to pay 16% of the expansion cost when Bradley is not going to utilize 16% of the expansion. KRMA Accountant Karen Benson replied that, according to the KRMA intergovernmental agreement, the cost for capital expenditures is allocated based on capacity allocation, with Bradley's being 15.2%, the City of Kankakee at 54.417%, the Village of Bourbonnais at 29.719% and the Village of Aroma Park at 0.603%. Dir Romo stated that in his opinion the Village of Aroma Park and the Village of Bradley are being mistreated and overcharged. He also stated his opinion that the Village of Aroma Park and the Village of Bradley would have to double or triple rates because of the potential debt being taken on for expansion for other communities. Dir Romo stated that Bradley will be seeking legal counsel.

Therefore, Village of Bradley will be seeking legal counsel. Vice Chairman Schore, Dir Hunter, Dir Osenga, Dir Swanson, Chairman Curtis voted in favor of, and Dir Romo vote Nay, Dir Stump was absent.

VI. **New Business**

A. **Recommendation of RFPs for 401(k) for KMRA Employees'**

Exec Dir Tyson recommended Faber Financial with a vote of 14:2 by the union employees' as well. Motion to recommend engaging to Faber Financial Services was made by Dir Romo and seconded by Vice Chairman Schore. All board member present voted in favor of, and Dir Stump was absent.

VII. **Executive Session**

A. **Personnel & Probable or Imminent Litigation**

None

VIII. **Next Meeting**

Next Regular Board Meeting- **Thursday, February 22, 2024 (9:00 A.M. at KRMA Board Room)**

Motion to Adjourn was made by: Dir Osenga and seconded by Dir Swanson. Motion Carried.



*Kankakee River Metropolitan Agency*

*Providing Wastewater Treatment to the Kankakee River Valley*

Wave goodbye to the old year  
and embrace the new -



full of hope, dreams, and good  
health.

Wishing you a happy new year  
full of joy!

**Monthly Operations Report**

**January 2024**

**KRMA’S JANUARY HIGHLIGHTS:**

There was a special meeting held on January 12,2024 to discuss the changes to the engineering design. The topic was to address plant upgrades and performing the design in phases.

Annual report completed and submitted to Illinois EPA and US EPA

- Non- hazard special waste report – Illinois EPA
- Bio solids – US EPA
- OSHA’s 300 Summary Work-Related Injuries and Illnesses

The O&M specialists continue to maintain equipment as needed.

The month of January, the Agency had no violation of the NPDES (National Pollutant Discharge Elimination System) permits.

**1.0 WASTEWATER TREATMENT FACILITY OPERATION**

**Attachment A** Details the monthly operational information for the facility.

**2.0 INFLUENT FLOW**

**Table 2.1** Summarizes total flow and average daily flow to the facility from each municipality.

**Attachment B** for details of daily flow rates.

**Table 2.1**  
*Plant Flows*

Municipality	Plant Influent	Kankakee	Bourbonnais	Bradley	Aroma Park
Total Flow (MGD)	720.01	451.52	177.767	88.360	2.367
Daily Average Flow (MGD)	23.23	14.57	5.734	2.850	0.076



### 3.0 EFFLUENT QUALITY

**Table 3.1** Summarizes the effluent quality data.

**Table 3.1**  
*Effluent Quality*

	IEPA Limits	Effluent Average
Biochemical Oxygen Demand (BOD) – Monthly Average	20 mg/l	6 mg/l
Total Suspended Solids (TSS) - Monthly Average	25 mg/l	20 mg/l
PH	6-9 SU	6.98 SU
Chlorine Residual	0.05 mg/l	n/a
Fecal Coliform	400/100 ml	n/a

### ODOR ISSUES:

- There were no odor complaints registered at the KRMA facility in January.
- There were no odor complaints registered at the East Gate site in January.

### 4.0 PERSONNEL

The Agency would like to Congratulate Richard (RJ) Tyson, O&M Specialist, on 2 years as a KRMA employee. Thank you all for being such a valuable and loyal member of our team. Your knowledge, hard work and dedication is greatly appreciated.

**Congratulations are also in honor for achieving Certificate of Competency**

Alexander Bowser, Class 4 Wastewater Treatment Works Operator

The Agency would like to say “HAPPY BIRTHDAY” to all the employees born in January.

Employees continue to follow the COVID-19 Warning signs and Safety Tips. One of the best ways to help keep workers healthy is to stay home **except for** necessary outings, and when you do go out for the necessities, there are steps you can take to minimize the risk of spreading illness.

**5.0 MAINTENANCE AND REPAIR**

Number of Work Orders Closed for the Month:	1259
Hours of Scheduled Work Orders Performed:	731.83

**6.0 SLUDGE HANDLING**

Start Date: 01/01/2024  
End Date: 01/31/2024

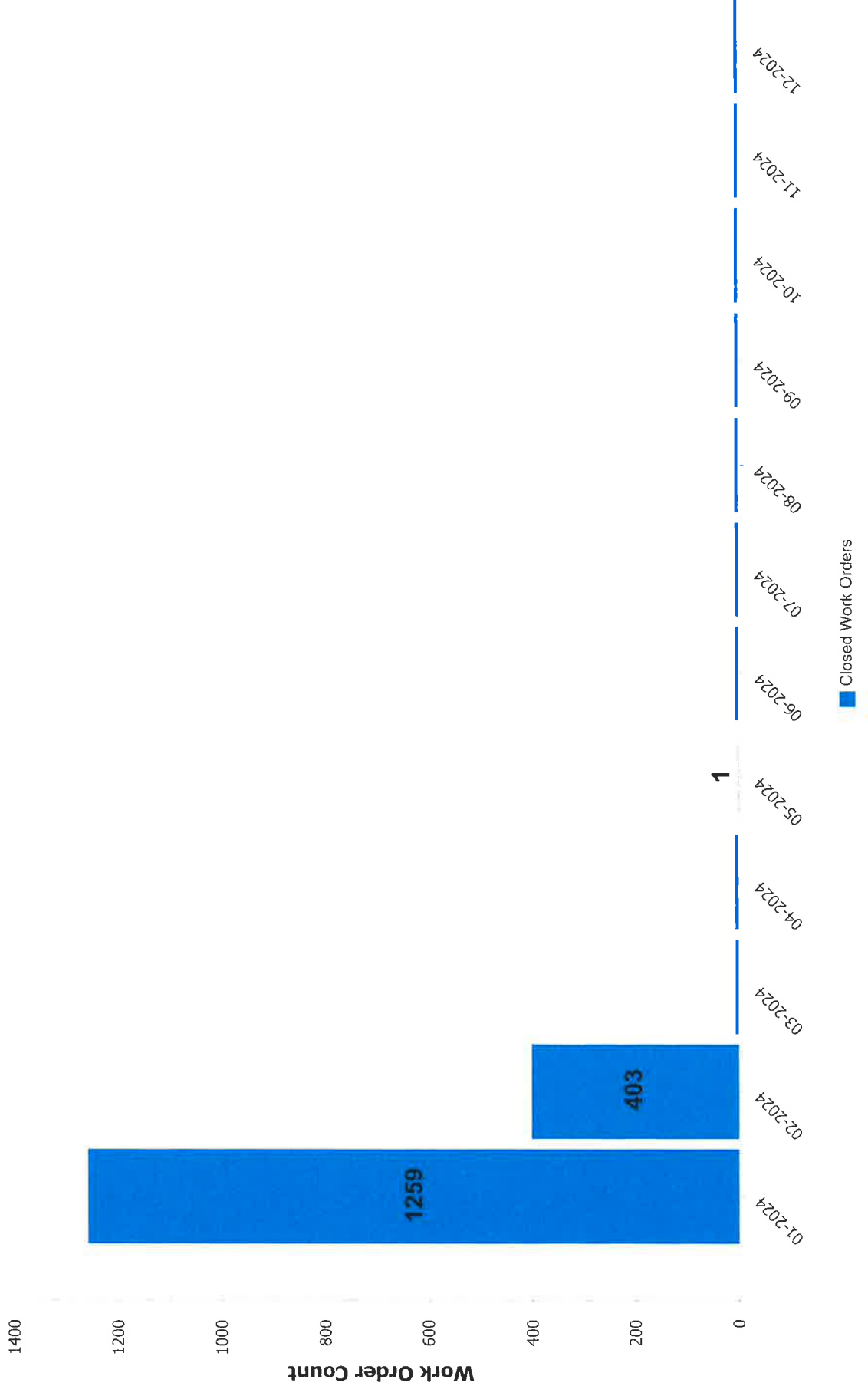
Gallons of sludge produced and sent to thickening:	2,093,121.00
Gallons of sludge put into storage after thickening:	720,000.00
Sludge removed from the plant for land application:	0.00
Sludge remaining in storage:	3,730,000.00

**7.0 WATER USAGE**

JANUARY 2024 (32 DAYS): 38,193 CU FT= 285,700 GALS. = \$2535.45  
NUMBER OF DAYS IN THE BILLING CYCLE: 32

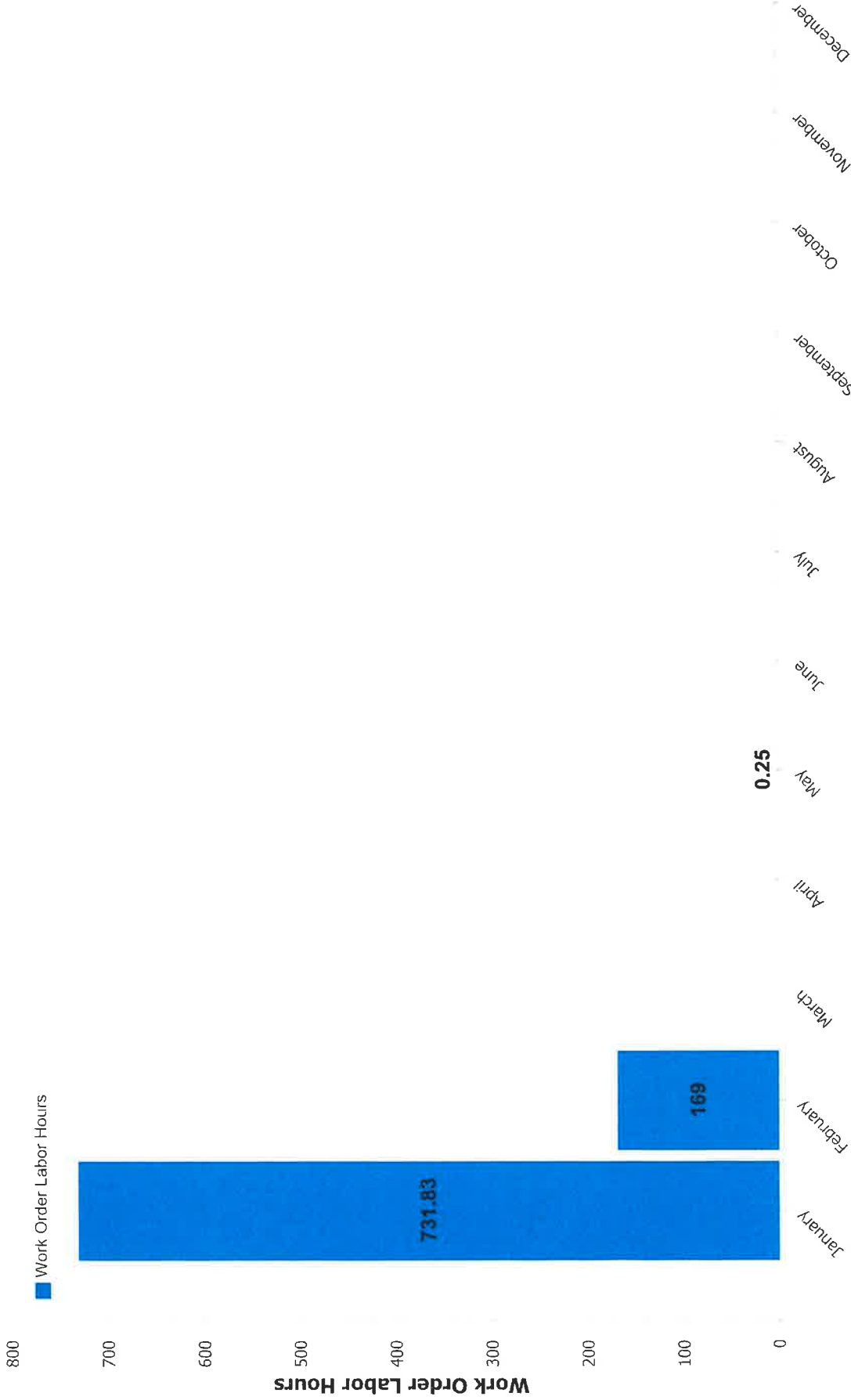
# Work Orders Closed By Month

From January, 2024 to December, 2024



# Work Order Labor Hours by Month

## 2024



# KANKAKEE RIVER METRO AGENCY Wastewater Report, January 2024

For updates on your plant in-between these monthly reports, please visit our wastewater dashboard <https://iwss.uillinois.edu>

## LOCATION: KANKAKEE RIVER METRO AGENCY (Kankakee County)

### Catchment Information

Population Served	56,317
NPDES	IL0021784
zipcode	60901
IL Covid Region	7

## SARS-CoV-2 LEVELS IN WASTEWATER

Wastewater is analyzed using digital PCR (dPCR) to determine the concentration of the SARS-CoV-2 virus in a sample. The nucleocapsid protein (N) gene of the virus is targeted in the assay, and results are reported in gene copies per liter of starting wastewater.

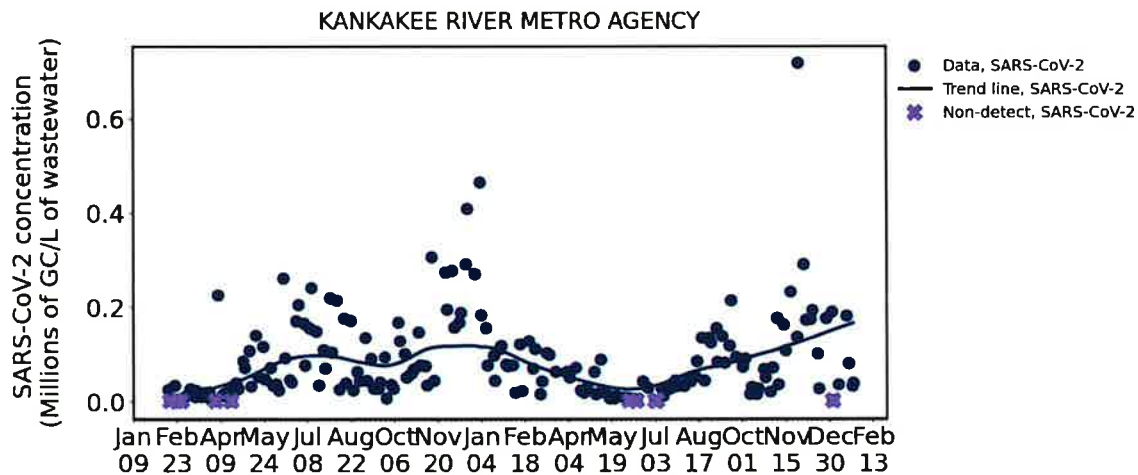


Figure 1. Time series plot of SARS-CoV-2 viral concentrations in millions of gene copies per liter (GC/L) of wastewater.

## SARS-CoV-2 SAMPLING RESULTS - LAST 8 SAMPLES

Date	SARS-CoV-2 (GC/L)
2024-01-24	40,350
2024-01-23	33,600
2024-01-19	82,650
2024-01-17	182,700
2024-01-09	36,150

2024-01-03	Non-detect
2024-01-02	190,500
2023-12-28	1,766,250

## SARS-CoV-2 LINEAGES IN WASTEWATER

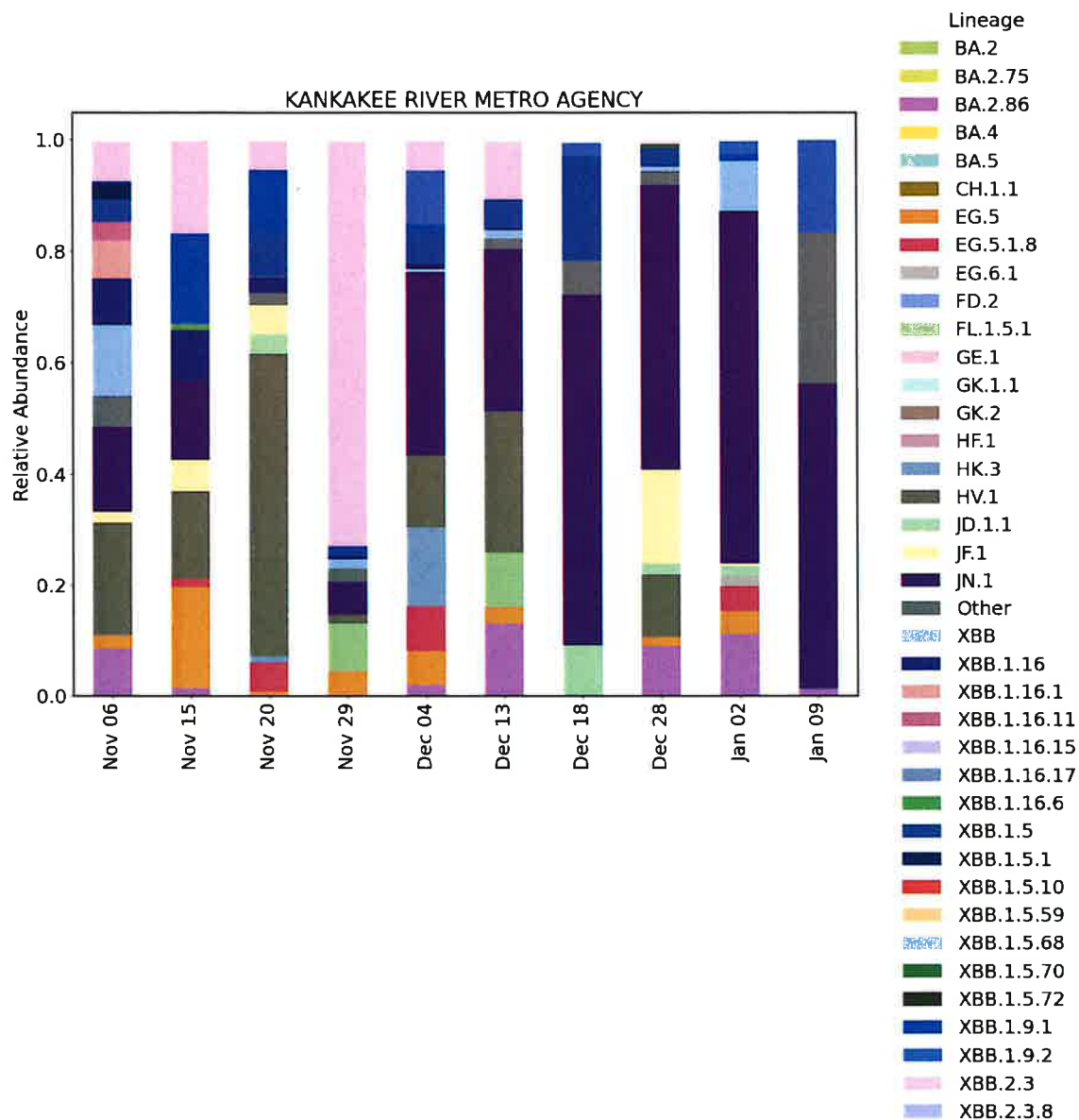


Figure 2. Stacked barplot showing the relative abundances of SARS-CoV-2 lineages in wastewater samples. All lineages in the legend, excluding "Other," are associated with Omicron. The most recently available two months worth of data are shown.

## INFLUENZA A/B LEVELS IN WASTEWATER

Wastewater is analyzed using digital PCR (dPCR) to determine the concentration of influenza A and influenza B viruses in a sample. Results are reported in gene copies per liter of starting wastewater.

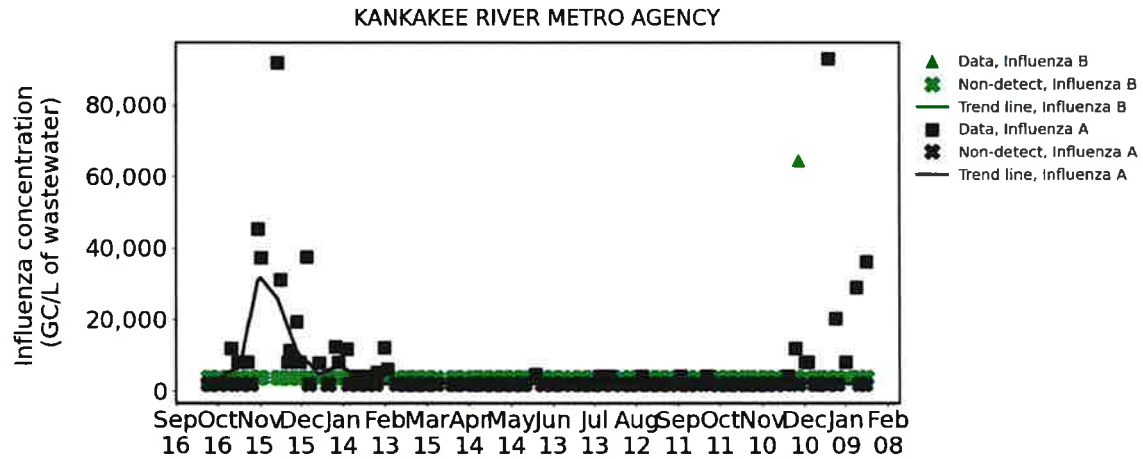


Figure 3. Time series plot of Influenza A/B viral concentrations in gene copies per liter (GC/L) of wastewater.

## INFLUENZA A/B SAMPLING RESULTS - LAST 8 SAMPLES

Date	Influenza A (GC/L)	Influenza B (GC/L)
2024-01-24	36,300	Non-detect
2024-01-23	Non-detect	Non-detect
2024-01-19	Non-detect	Non-detect
2024-01-17	29,025	Non-detect
2024-01-09	8,025	Non-detect
2024-01-03	Non-detect	Non-detect
2024-01-02	20,250	Non-detect
2023-12-28	93,075	Non-detect

## RSV LEVELS IN WASTEWATER

Wastewater is analyzed using digital PCR (dPCR) to determine the concentration of Respiratory Syncytial Virus (RSV) in a sample. Results are reported in gene copies per liter of starting wastewater.

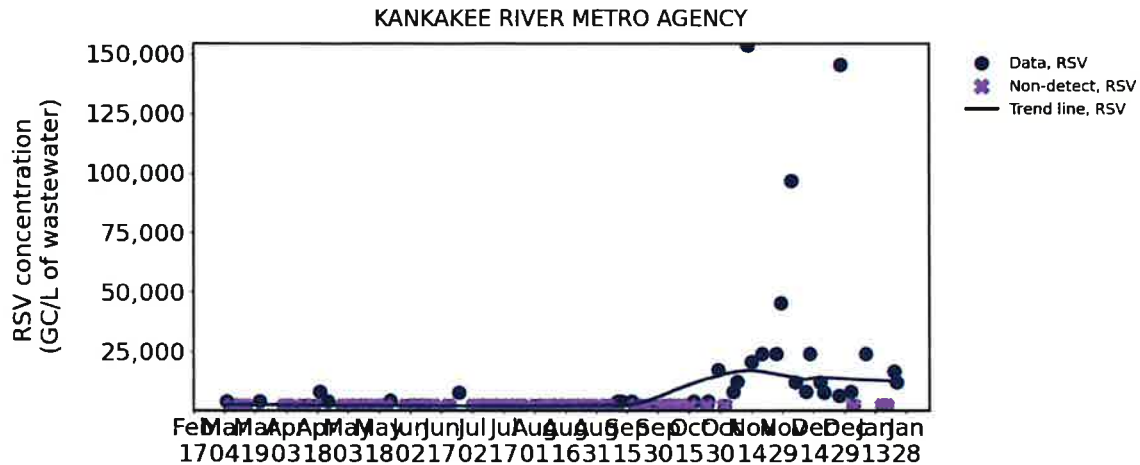


Figure 4. Time series plot of RSV viral concentrations in gene copies per liter (GC/L) of wastewater.

## RSV SAMPLING RESULTS - LAST 8 SAMPLES

Date	RSV (GC/L)
2024-01-24	12,075
2024-01-23	16,800
2024-01-19	Non-detect
2024-01-17	Non-detect
2024-01-09	24,075
2024-01-03	Non-detect
2024-01-02	8,100
2023-12-28	145,650



# **ATTACHMENT**

# **A**

**DMR Monthly Report**

1/1/2024 to 1/31/2024

Var #	452	159	119	236	454	351	113	237	386
	EFF FLOW	001 Eff pH	FINAL EFF TSS	Weekly ave Eff TSS	EFF TSS	WeeklyAveEffTSS	EFF-C-BOD	Weekly Ave EffCBOD	EFF C-BOD
Date	MGD	STD UNIT	mg/L	MG/L	LBS/D	LBS/Day	mg/l	MG/L	lbs\day
1/1/2024	15.579		20		2,599		7		910
1/2/2024	14.547	6.98	21		2,548		8		971
1/3/2024	14.618	6.98	19		2,316		6		731
1/4/2024	13.912	6.96	20		2,321		6		696
1/5/2024	13.498	6.98	6		675				
1/6/2024	13.484		9	17	1,012	2,085	5	7	562
1/7/2024	13.439		19		2,130		5		560
1/8/2024	13.522	7.01	19		2,143		6		677
1/9/2024	24.239	7.29	48		9,703		9		1,819
1/10/2024	25.013	6.66	24		5,007		9		1,877
1/11/2024	23.783	7.48	20		3,967		10		1,984
1/12/2024	26.545	6.93	20		4,428				
1/13/2024	30.547		12	23	3,057	4,348	7	8	1,783
1/14/2024	31.003		10		2,586		5		1,293
1/15/2024	24.659		2		411		4		823
1/16/2024	21.099	7.17	17		2,991		5		880
1/17/2024	19.183	6.98	14		2,240		3		480
1/18/2024	17.924	7.05	14		2,093		5		747
1/19/2024	18.463	7.03	15		2,310				
1/20/2024	17.546		19	13	2,780	2,202	6	5	878
1/21/2024	16.133		8		1,076		5		673
1/22/2024	15.795	7.02	12		1,581		5		659
1/23/2024	20.483	7.03	20		3,417		6		1,025
1/24/2024	31.232	6.93	27		7,033		6		1,563
1/25/2024	34.061	6.86	83		23,578		7		1,988
1/26/2024	41.863	6.92	40		13,965				
1/27/2024	42.830		23	30	8,216	8,409	5	6	1,786
1/28/2024	35.164		17		4,986		5		1,466
1/29/2024	32.963	6.90	26		7,148		7		1,924
1/30/2024	29.287	6.59	15		3,664		5		1,221
1/31/2024	27.600	6.88	12		2,762		4		921

Minimum	13.439	<b>6.59</b>	2	13	411	2,085	3	5	480
Maximum	42.830	<b>7.48</b>	83	<b>30</b>	23,578	<b>8,409</b>	10	<b>8</b>	1,988
Average	23.226	6.98	<b>20</b>	21	<b>4,347</b>	4,261	<b>6</b>	7	<b>1,144</b>
Sum	720.014	146.63	631	83	134,741	17,044	161	25	30,898

<b>Limit</b>		<b>Range 6-9</b>	<b>25</b>	<b>45</b>	<b>9383</b>	<b>16889</b>	<b>20</b>	<b>40</b>	<b>7506</b>
--------------	--	------------------	-----------	-----------	-------------	--------------	-----------	-----------	-------------

**DMR Monthly Report**

1/1/2024 to 1/31/2024

Var #	352	187	191	401	101	450	115	451	455
	WeeklyAverageEffCBOD	001 EFF CL2	FECAL COLI 001	TOTAL INF FLOW	INFLUENT BOD	INF BOD LOAD	INFLUENT TSS	INF TSS	BOD REMOVAL
Date	LBS/Day	mg/L	#/100ml	MGD	mg/L	LBS/D	mg/L	LBS/D	%
1/1/2024				15.58	121	15,721	100	12,993	94
1/2/2024				14.55	132	16,015	62	7,522	94
1/3/2024				14.62	133	16,215	97	11,826	95
1/4/2024				13.91	164	19,028	125	14,503	96
1/5/2024				13.50			304	34,222	
1/6/2024	811			13.48	112	12,595	420	47,232	96
1/7/2024				13.44	36	4,035	124	13,898	86
1/8/2024				13.52	239	26,953	382	43,079	97
1/9/2024				24.24	128	25,876	342	69,136	93
1/10/2024				25.01	125	26,076	178	37,132	93
1/11/2024				23.78	144	28,562	140	27,769	93
1/12/2024				26.55			150	33,208	
1/13/2024	1,450			30.55	76	19,362	67	17,069	91
1/14/2024				31.00	70	18,100	72	18,617	93
1/15/2024				24.66	97	19,949	42	8,638	96
1/16/2024				21.10	86	15,133	67	11,790	94
1/17/2024				19.18	64	10,239	62	9,919	95
1/18/2024				17.92	145	21,675	140	20,928	97
1/19/2024				18.46			232	35,724	
1/20/2024	850			17.55	126	18,438	150	21,950	95
1/21/2024				16.13	93	12,513	87	11,706	95
1/22/2024				15.80	214	28,190	180	23,711	98
1/23/2024				20.48	164	28,016	180	30,749	96
1/24/2024				31.23	69	17,973	130	33,862	91
1/25/2024				34.06	94	26,702	130	36,929	93
1/26/2024				41.86			186	64,940	
1/27/2024	1,282			42.83	42	15,002	310	110,733	88
1/28/2024				35.16	74	21,702	140	41,057	93
1/29/2024				32.96	98	26,941	50	13,746	93
1/30/2024				29.29	95	23,204	106	25,891	95
1/31/2024				27.60	115	26,471	152	34,988	97

Minimum	811			13.44	36	4,035	42	7,522	86
Maximum	1,450			42.83	239	28,562	420	110,733	98
Average	1,098			23.23	113	20,025	158	29,854	94
Sum	4,393			720.01	3,056	540,687	4,907	925,466	2,537

<b>Limit</b>	<b>15012</b>	<b>0.05</b>	<b>400</b>						
--------------	--------------	-------------	------------	--	--	--	--	--	--

**DMR Monthly Report**

1/1/2024 to 1/31/2024

Var #	456	1040	1041	1042	1043	255	297	953	1023
	TSS REMOVAL	North Effluent DO - SCADA	South Effluent DO - SCADA	Daily Average Effluent DO	Effluent DO weekly average	FINAL EFF NH3N	Eff Nitrogen #	Eff_Total Phosphoru s- TP(TNT)	Effluent Total Nitrogen
Date	%	mg/l	mg/l	mg/l	mg/l	mg/L	#/day	mg/l	mg/l
1/1/2024	80	9.32	10.00	9.66		0.05	6.50	1.11	
1/2/2024	66	8.92	9.83	9.38		0.05	6.07	1.43	
1/3/2024	80	8.52	9.84	9.18		0.05	6.10	1.52	17.26
1/4/2024	84	8.74	9.93	9.34		0.05	5.80	0.96	
1/5/2024	98	8.52	9.77	9.15					
1/6/2024	98	8.37	9.56	8.97	9.31				
1/7/2024	85	8.75	9.84	9.30		0.05	5.60	0.35	
1/8/2024	95	8.92	9.95	9.44		0.05	5.64	1.00	
1/9/2024	86	7.64	8.73	8.19		2.07	418.46	1.01	13.26
1/10/2024	87	8.35	9.54	8.95		0.06	11.66	0.07	
1/11/2024	86	8.22	9.51	8.87		0.05	10.81	0.12	
1/12/2024	87	7.33	8.53	7.93					
1/13/2024	82	8.20	9.32	8.76	8.77				
1/14/2024	86	9.22	10.00	9.61					
1/15/2024	95	9.16	9.82	9.49		0.41	83.70	0.84	
1/16/2024	75	9.03	9.93	9.48		0.09	16.56	0.50	
1/17/2024	77	9.32	10.00	9.66		0.10	15.53	0.72	
1/18/2024	90	8.89	9.90	9.40		1.32	197.32	1.49	14.84
1/19/2024	94	8.60	9.79	9.20					
1/20/2024	87	9.09	9.97	9.53	9.48				
1/21/2024	91	9.61	10.00	9.81		0.05	6.73	0.19	8.24
1/22/2024	93	9.39	9.97	9.68		0.85	111.84	0.89	
1/23/2024	89	8.15	9.37	8.76		5.79	989.10	1.57	
1/24/2024	79	7.76	8.82	8.29		1.38	359.46	0.84	
1/25/2024	36	7.75	8.71	8.23		1.00	284.07	1.29	
1/26/2024	78	5.50	6.58	6.04					
1/27/2024	93				8.47				
1/28/2024	88					0.17	48.98	0.07	
1/29/2024	48	5.18	6.34	5.76		6.53	1,795.17	0.21	11.86
1/30/2024	86	6.84	8.32	7.58		2.14	522.70	0.09	
1/31/2024	92	7.04	8.63	7.84		0.40	91.15	0.11	

Minimum	36	5.18	6.34	<b>5.76</b>	<b>8.47</b>	0.05	5.60	0.07	8.24
Maximum	98	9.61	10.00	9.81	9.48	<b>6.53</b>	<b>1,795.17</b>	1.57	17.26
Average		8.29	9.33	<b>8.81</b>	9.01	1.03	227.23	0.74	13.09
Sum	2,591	240.33	270.50	255.42	36.03	22.70	4,998.94	16.35	65.46

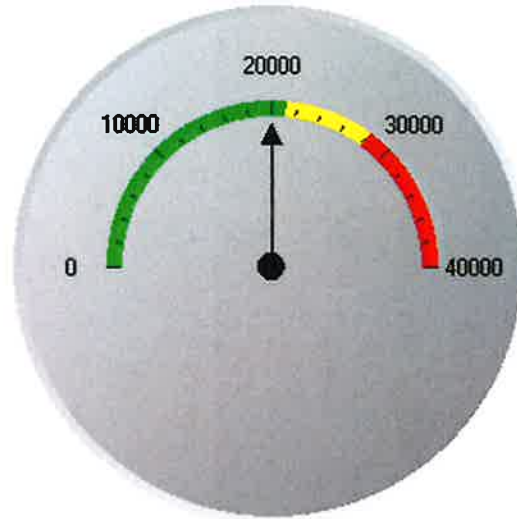
<b>Limit</b>				<b>min &gt;4.0</b>	<b>&gt;4.5</b>	<b>7.5</b>	<b>2815</b>		
				<b>avg &gt;6.0</b>					



**Influent BOD loading Lbs - Monthly AVG**

**20,025 Lbs./Day**

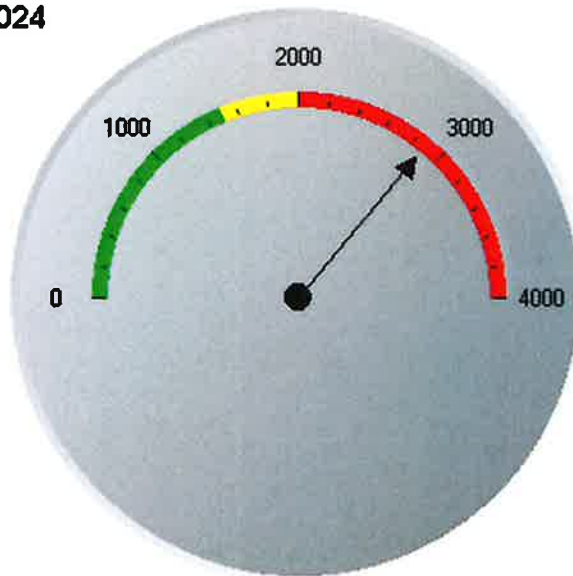
01/01/2024 - 01/31/2024



**Influent NH3 loading Lbs - Monthly AVG**

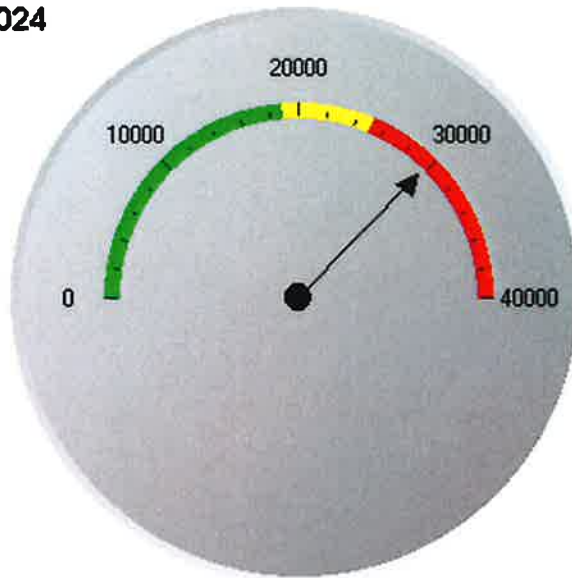
**2,893 Lbs./Day**

01/01/2024 - 01/31/2024



**Influent TSS loading Lbs - Monthly AVG**  
**01/01/2024 - 01/31/2024**

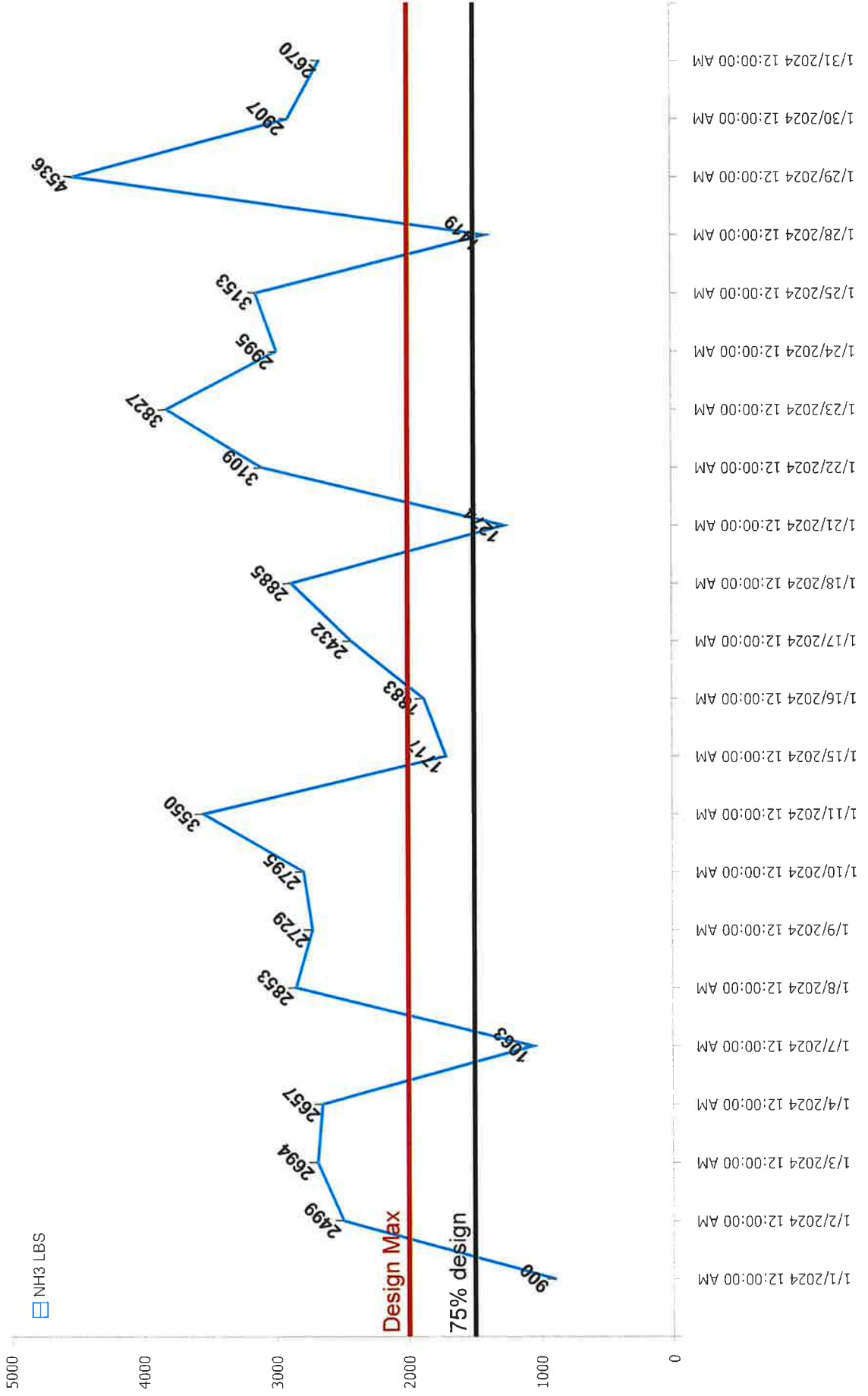
**29,854 Lbs./Day**



**0 to 18900 - Target Loading**  
**18900 to 25200 - Above 75% Threshold**  
**Above 25200**

# KRMA influent NH3 pounds

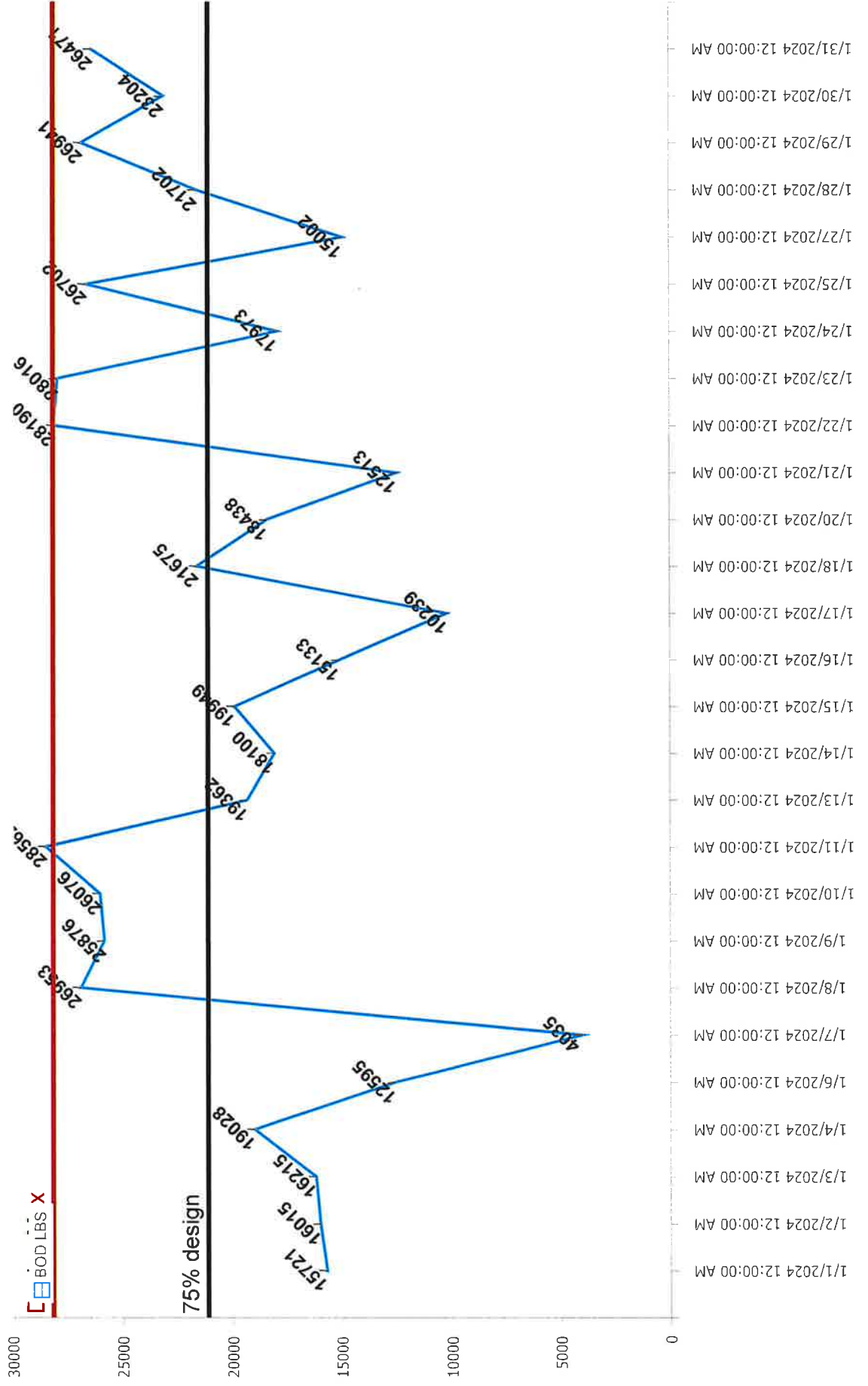
Average Lbs. NH3: 2,570.32





# KRMA influent BOD pounds

Average Lbs. BOD: 20,025.41



# **ATTACHMENT**

## **B**



# **ATTACHMENT**

**C**



SAFETY MEETING  
February 13, 2024  
9:30am & 1:30pm  
Agenda

**I. Safety Minutes**

Review minutes from January 2024

**II. Old Business**

- A. There were no lost time accidents for the month of January 2024.
- B. Speeding Concern
- C. Safety Grant suggestions

**III. New Business**

A. Safety Training

**Active Shooter Preparedness training;** Presented by Kankakee Police department under the direction of Administrative Sergeant Timothy Klopp.

B. Safety Concerns

C. Safety Team Leader Report

D. Open Discussion

**Next Meeting: Thursday, March 14, 2024  
9:30am & 1:30pm**



SAFETY MEETING  
January 11, 2024  
9:30am & 1:30pm  
Minutes

**In attendance:**

**9:30am session:**

Melanie Gossett, Facilitator

Shaun Ownbey

Dan Combs

Nick Scheppler

Ron Haney

Bryan Kennedy

Nick Tucker

Alex Bowser

Rob Forsman

**1:30pm session:**

Melanie Gossett, Facilitator

Jack Renchen

Shawn Malone

Jim Churney

Josh Peters

John Lund

Mike Arseneau

RJ Tyson

**Absent:**

Max Gossett

**I. Safety Minutes**

Minutes from December 2023 - Approved

**II. Old Business**

- A. There were no lost time accidents for the month of December 2023.
- B. Please remember to adhere to all speed limits when outside of the KRMA facility and use caution when driving within the plant.

**III. New Business**

**A. Safety Training**

- 1. The IPRF safety video *Back Safety: Proper Lifting Procedures #2558* – IEPA CEU #12976 (1.0 CEU) was presented.
- 2. A link to an informative TPO magazine article *Put a Stop to Trips, Slips and Falls with These Safety Pointers* was shared.

## B. Safety Concerns

1. There were several concerns about the manner in which the grit removal process equipment (auger, motor etc.) are being lifted/removed from the unit
  - ✓ Melanie has reached out to Dan Small with Strand Engineering for his expertise. Until there is a resolve, O&M Specialists will not be asked to perform that specific job.
2. There were some questions as to why there are new fire extinguishers in the chlorine tank/control rooms.
  - ✓ See attached information in regards to the selection of fire extinguishers.

## C. Safety Team Report

Safety Team Leader absent

## D. Open Discussion

1. Everyone was reminded that the Kankakee Police Department will be at our next Safety Meeting on February 13<sup>th</sup>, 9:30am & 1:30pm to present training on Active Shooter Preparedness.
2. A vote was taken for the 401-k plan provider.
3. This year's Safety Grant is \$5,747.00. Current suggestions are replace/add ladders that have higher loading/weight limits and new portable gas detectors.
4. It was asked when KRMA would filling the open O&M position?
  - ✓ Hiring will proceed in the Spring.
5. Would KRMA consider a recycling program for scrap metals/copper?
  - ✓ KRMA currently does recycle. Proceeds go to KRMA.
6. It was reported that you can see through the floor boards of the 2004 GMC truck. It was also suggested that KRMA invest in better floor mats to slow the deterioration of the truck floors.
  - ✓ Plan to weld floor was suggested and permission is granted to purchase better quality floor mats for the vehicles.
7. Off-shift employees asked that the vehicles with plows have full tanks of gas when weather requires that they be used throughout the night.

Next Meeting: Thursday, February 13, 2024  
9:30am & 1:30pm

# **ATTACHMENT**

## **D**



**FIELD CALIBRATION SHEET**

COMPANY: KRMA

CITY: KANKAKEE/RIVERLANE

FLOW METER MODEL: Isco Signature

INFLUENT February 7<sup>th</sup>, 2024

PRIMARY DEVICE: PHARSHAL

FLOW: 0-516 GPM 0-13.20 IN

MEASURING DEVICE: ULTRASONIC

**CHECK POINTS:**

LEVEL? YES

FREE FLOWING?

TURBULENCE? NO

BLOCKAGE? No

SURFACE BUILD-UP? No

HEAD MEASURING DEVICE MOUNTED PROPERLY? Yes

BLOCKAGE IN HEAD MEASURING DEVICE? NO

IS FLOW METER PROGRAMMED CORRECTLY? Yes

**CALIBRATION:**

**NOTE: THE ZERO POINT FOR MEASURING MUST BE LEVEL WITH THE WEIR CREST OR FLUME ZERO POINT:**

A) IF POSSIBLE, CUT-OFF FLOW & SET LEVEL TO 0.000FT

LEVEL BEFORE:

LEVEL AFTER:

B) IF FLOW CANNOT BE CUT-OFF, ADJUST LEVEL ON METER TO MEASURED POINT

C) LEVEL BEFORE: TARGET SET 24.125" Level 24.127"

LEVEL AFTER: 24.127"

D) Actual Flow 1.916" 26.07 GPM

**LEVEL FLOW CONVERSION CHECK:**

**WITH FLOW THRU PRIMARY DEVICE, CHECK LEVEL TO FLOW CONVERSION WITH HANDBOOK OR PRIMARY DEVICE DATA SHEET: Yes**

**TOTALIZER CHECK:**

**WITH FLOW GOING THRU PRIMARY DEVICE, VERIFY THAT TOTAL FLOW IS INTEGRATING PROPERLY USING TIMED RATE METHOD: Yes**

**CALIBRATED BY:** Brian Scheppler

**DATE:** 2/7/2024

BC SYSTEMS INC.  
2778 N. 4000 E. ROAD  
BOURBONNAIS ILLINOIS 60914  
PHONE: 1-815-671-1257  
FAX: 1-815-802-0219

## FIELD CALIBRATION SHEET

COMPANY: KRMA

CITY: BRADLEY/ RIVER DRIVE

FLOW METER MODEL: Isco Signature

INFLUENT February 7<sup>th</sup>, 2024

PRIMARY DEVICE: PHARSHAL

FLOW: 0-21.36

MEASURING DEVICE: ULTRASONIC

### CHECK POINTS:

LEVEL? YES

FREE FLOWING? Yes

TURBULENCE? Yes

BLOCKAGE? NO

SURFACE BUILD-UP? NONE

HEAD MEASURING DEVICE MOUNTED PROPERLY? Yes

BLOCKAGE IN HEAD MEASURING DEVICE? NO

IS FLOW METER PROGRAMMED CORRECTLY? YES

### CALIBRATION:

NOTE: THE ZERO POINT FOR MEASURING MUST BE LEVEL WITH THE WEIR CREST OR FLUME ZERO POINT:

A) IF POSSIBLE, CUT-OFF FLOW & SET LEVEL TO 0.000FT

LEVEL BEFORE:

LEVEL AFTER:

B) IF FLOW CANNOT BE CUT-OFF, ADJUST LEVEL ON METER TO MEASURED POINT:

LEVEL BEFORE: Target 10" Level reading 9.993"

LEVEL AFTER: 9.993"

C) Actual Flow 2.73 MGD 7.945"

### LEVEL FLOW CONVERSION CHECK:

WITH FLOW THRU PRIMARY DEVICE, CHECK LEVEL TO FLOW CONVERSION WITH HANDBOOK OR PRIMARY DEVICE DATA SHEET: YES/OK

### TOTALIZER CHECK:

WITH FLOW GOING THRU PRIMARY DEVICE, VERIFY THAT TOTAL FLOW IS INTEGRATING PROPERLY USING TIMED RATE METHOD: YES/OK

CALIBRATED BY: BRIAN SCHEPPLER

DATE: 2/7/2024

BC SYSTEMS INC.  
2778 N. 4000 E. ROAD  
BOURBONNAIS ILLINOIS 60914  
PHONE: 1-815-671-1257  
FAX: 1-815-802-0219

## FIELD CALIBRATION SHEET

COMPANY: KRMA

CITY: KANKAKEE/BROOKMONT

FLOW METER MODEL: ISCO Signature

INFLUENT February 7<sup>th</sup>, 2024

PRIMARY DEVICE: PHARSHAL

FLOW: 0-516 GPM 0-13.20 IN

MEASURING DEVICE: ULTRASONIC

### CHECK POINTS:

LEVEL? YES

FREE FLOWING? YES

TURBULENCE? NO

BLOCKAGE? No

SURFACE BUILD-UP? NO

HEAD MEASURING DEVICE MOUNTED PROPERLY? Yes

BLOCKAGE IN HEAD MEASURING DEVICE? NO

IS FLOW METER PROGRAMMED CORRECTLY? Yes

### CALIBRATION:

**NOTE: THE ZERO POINT FOR MEASURING MUST BE LEVEL WITH THE WEIR CREST OR FLUME ZERO POINT:**

A) IF POSSIBLE, CUT-OFF FLOW & SET LEVEL TO 0.000FT  
LEVEL BEFORE:

LEVEL AFTER:

B) IF FLOW CANNOT BE CUT-OFF, ADJUST LEVEL ON METER TO MEASURED  
POINT:

LEVEL BEFORE: Target 24.125" Level 24.038"

LEVEL AFTER: 24.124"

Actual Flow 40.14 GPM 2.533"

### LEVEL FLOW CONVERSION CHECK:

WITH FLOW THRU PRIMARY DEVICE, CHECK LEVEL TO FLOW CONVERSION WITH HANDBOOK OR PRIMARY DEVICE DATA SHEET: Yes

### TOTALIZER CHECK:

WITH FLOW GOING THRU PRIMARY DEVICE, VERIFY THAT TOTAL FLOW IS INTEGRATING PROPERLY USING TIMED RATE METHOD: Yes

CALIBRATED BY: Brian Scheppler

DATE 2/7/2024

BC SYSTEMS INC.  
2778 N. 4000 E. ROAD  
BOURBONNAIS ILLINOIS 60914  
PHONE: 1-815-671-1257  
FAX: 1-815-802-0219

## FIELD CALIBRATION SHEET

COMPANY: KRMA

CITY: KANKAKEE

FLOW METER MODEL: Siemens Hydro Ranger #1

Influent February 7, 2024

PRIMARY DEVICE: Flume

FLOW: 0-73 MGD

MEASURING DEVICE: Ultrasonic

### CHECK POINTS:

LEVEL? YES

FREE FLOWING? Yes

TURBULENCE? No

BLOCKAGE? NO

SURFACE BUILD-UP? No

HEAD MEASURING DEVICE MOUNTED PROPERLY? YES

BLOCKAGE IN HEAD MEASURING DEVICE? NO

IS FLOW METER PROGRAMMED CORRECTLY? YES

### CALIBRATION:

NOTE: THE ZERO POINT FOR MEASURING MUST BE LEVEL WITH THE WEIR CREST OR FLUME ZERO POINT:

A) IF POSSIBLE, CUT-OFF FLOW & SET LEVEL TO 0.000FT

LEVEL BEFORE:

LEVEL AFTER:

B) IF FLOW CANNOT BE CUT-OFF, ADJUST LEVEL ON METER TO MEASURED POINT:

LEVEL BEFORE: Target Set 20 MGD AS Found 20.04 MGD

LEVEL AFTER: 20.04 MGD

C) Actual Flow 17.36 MGD

### LEVEL FLOW CONVERSION CHECK:

WITH FLOW THRU PRIMARY DEVICE, CHECK LEVEL TO FLOW CONVERSION WITH HANDBOOK OR PRIMARY DEVICE DATA SHEET: YES/OK

### TOTALIZER CHECK:

WITH FLOW GOING THRU PRIMARY DEVICE, VERIFY THAT TOTAL FLOW IS INTEGRATING PROPERLY USING TIMED RATE METHOD: YES/OK

CALIBRATED BY: BRIAN SCHEPPLER

DATE: 2/7/2024

BC SYSTEMS INC.  
2778 N. 4000 E. ROAD  
BOURBONNAIS ILLINOIS 60914  
PHONE: 1-815-671-1257  
FAX: 1-815-802-0219

## FIELD CALIBRATION SHEET

COMPANY: KRMA

CITY: KANKAKEE

FLOW METER MODEL: Siemens Hydro Ranger #2

INFLUENT February 7, 2024

PRIMARY DEVICE: Flume

FLOW: 0-73.425 MGD

MEASURING DEVICE: Ultrasonic

### CHECK POINTS:

LEVEL? YES

FREE FLOWING? Yes

TURBULENCE? NO

BLOCKAGE? NO

SURFACE BUILD-UP? No

HEAD MEASURING DEVICE MOUNTED PROPERLY? YES

BLOCKAGE IN HEAD MEASURING DEVICE? NO

IS FLOW METER PROGRAMMED CORRECTLY? YES

### CALIBRATION:

NOTE: THE ZERO POINT FOR MEASURING MUST BE LEVEL WITH THE WEIR CREST OR FLUME ZERO POINT:

A) IF POSSIBLE, CUT-OFF FLOW & SET LEVEL TO 0.000FT

LEVEL BEFORE:

LEVEL AFTER:

B) IF FLOW CANNOT BE CUT-OFF, ADJUST LEVEL ON METER TO MEASURED POINT:

LEVEL BEFORE: Target Set 20 MGD AS Found 20.03 MGD

LEVEL AFTER: 20.03 MGD

C) Actual Flow 17.36 MGD

### LEVEL FLOW CONVERSION CHECK:

WITH FLOW THRU PRIMARY DEVICE, CHECK LEVEL TO FLOW CONVERSION WITH HANDBOOK OR PRIMARY DEVICE DATA SHEET: YES/OK

### TOTALIZER CHECK:

WITH FLOW GOING THRU PRIMARY DEVICE, VERIFY THAT TOTAL FLOW IS INTEGRATING PROPERLY USING TIMED RATE METHOD: YES/OK

CALIBRATED BY: BRIAN SCHEPPLER

DATE: 2/7/2024

BC SYSTEMS INC.  
2778 N. 4000 E. ROAD  
BOURBONNAIS ILLINOIS 60914  
PHONE: 1-815-671-1257  
FAX: 1-815-802-0219

**FIELD CALIBRATION SHEET**

COMPANY: KRMA

CITY: BOURBONNAIS/New

FLOW METER MODEL: Isco Laser Flow

INFLUENT February 7, 2024

PRIMARY DEVICE: 36" PIPE

FLOW: 0-21.36 MGD

MEASURING DEVICE:

**CHECK POINTS:**

LEVEL? YES

FREE FLOWING? Yes

TURBULENCE? NO

BLOCKAGE? NO

SURFACE BUILD-UP? None

HEAD MEASURING DEVICE MOUNTED PROPERLY?

BLOCKAGE IN HEAD MEASURING DEVICE? NO

IS FLOW METER PROGRAMMED CORRECTLY? YES

**CALIBRATION:**

NOTE: THE ZERO POINT FOR MEASURING MUST BE LEVEL WITH THE WEIR CREST OR FLUME ZERO POINT:

A) IF POSSIBLE, CUT-OFF FLOW & SET LEVEL TO 0.000FT

LEVEL BEFORE:

LEVEL AFTER:

B) IF FLOW CANNOT BE CUT-OFF, ADJUST LEVEL ON METER TO MEASURED POINT:

LEVEL BEFORE: Target level 19.0" As found 18.700"

LEVEL AFTER: 18.98"

C) Actual level 15.795" 4.15 MGD

**LEVEL FLOW CONVERSION CHECK:**

WITH FLOW THRU PRIMARY DEVICE, CHECK LEVEL TO FLOW CONVERSION WITH HANDBOOK OR PRIMARY DEVICE DATA SHEET: YES/OK

**TOTALIZER CHECK:**

WITH FLOW GOING THRU PRIMARY DEVICE, VERIFY THAT TOTAL FLOW IS INTEGRATING PROPERLY USING TIMED RATE METHOD: YES/OK

CALIBRATED BY: BRIAN SCHEPPLER

DATE: 2/7/2024

BC SYSTEMS INC.  
2778 N. 4000 E. ROAD  
BOURBONNAIS ILLINOIS 60914  
PHONE: 1-815-671-1257  
FAX: 1-815-802-0219

**FIELD CALIBRATION SHEET**

COMPANY: KRMA

CITY: Kankakee Influent

FLOW METER MODEL: Isco Laser Flow

INFLUENT February 7, 2024

PRIMARY DEVICE: 72" PIPE

FLOW: 0-115 MGD

MEASURING DEVICE:

**CHECK POINTS:**

LEVEL? YES

FREE FLOWING? Yes

TURBULENCE? NO

BLOCKAGE? NO

SURFACE BUILD-UP? Foam

HEAD MEASURING DEVICE MOUNTED PROPERLY? YES

BLOCKAGE IN HEAD MEASURING DEVICE? NO

IS FLOW METER PROGRAMMED CORRECTLY? YES

**CALIBRATION:**

**NOTE: THE ZERO POINT FOR MEASURING MUST BE LEVEL WITH THE WEIR CREST OR FLUME ZERO POINT:**

A) IF POSSIBLE, CUT-OFF FLOW & SET LEVEL TO 0.000FT

LEVEL BEFORE:

LEVEL AFTER:

B) IF FLOW CANNOT BE CUT-OFF, ADJUST LEVEL ON METER TO MEASURED POINT:

LEVEL BEFORE: Target level 51.0" As found 50.559"

LEVEL AFTER: 50.97"

C) Actual level 40.650" 10.62 MGD

**LEVEL FLOW CONVERSION CHECK:**

WITH FLOW THRU PRIMARY DEVICE, CHECK LEVEL TO FLOW CONVERSION WITH HANDBOOK OR PRIMARY DEVICE DATA SHEET: YES/OK

**TOTALIZER CHECK:**

WITH FLOW GOING THRU PRIMARY DEVICE, VERIFY THAT TOTAL FLOW IS INTEGRATING PROPERLY USING TIMED RATE METHOD: YES/OK

CALIBRATED BY: BRIAN SCHEPPLER

DATE: 2/7/2024

BC SYSTEMS INC.  
2778 N. 4000 E. ROAD  
BOURBONNAIS ILLINOIS 60914  
PHONE: 1-815-671-1257  
FAX: 1-815-802-0219

# **ATTACHMENT**

## **E**



January 2024 Monthly Pretreatment Sample Analysis (metals, cyanide & VOA) for the permitted industries were a total of **68 samples** and a total of **442 analyses**.

Gilster-Mary Lee Corporation	3 Samples
Hoffman Transportation, LLC	5 Samples
Laraway Recycling & Disposal Facility	12 Samples
Liberty Landfill, LLC	10 Samples
Livingston Landfill	7 Samples
Natural Gas & Pipeline Co. of America	5 Samples
Peoria Packing Co.	1 Sample
Prairie View RDF	11 Samples
Tank Cleaning Solutions, LLC	14 Samples

Volumes Received for January 2024 for trucked-in industries.

Gilster-Mary Lee Corporation	18,000 gals	3 loads
Hoffman Transportation, LLC	200,000 gals	40 loads
Kankakee Recycling & Disposal Facility	0 gals	0 loads
Lake County C&D Landfill	0 gals	0 loads
Laraway Recycling & Disposal Facility	226,390 gals	38 loads
Liberty Landfill, LLC	1,162,660 gals	176 loads
Livingston Landfill	287,301 gals	43 loads
Momence Packing	0 gals	0 loads
Natural Gas & Pipeline Co. of America	115,000 gals	23 loads
Newton County Landfill	0 gals	0 loads
Peoria Packing Co.	3,000 gals	1 load
Prairie View - Will County RNG Plant	0 gals	0 loads
Prairie View RDF	363,552 gals	54 loads
Tank Cleaning Solutions, LLC	219,954 gals	42 loads
Verdant Specialty Solutions US LLC	0 gals	0 loads
Zutat Feed Solutions	0 gals	0 loads
<b>Totals:</b>	<b>2,595,857 gals</b>	<b>420 loads</b>

The KRMA Facility received a total of **168 loads** of septage which totalled **511,300 gallons** for the month of January 2024





## Annual Load / Gallon Totals 2024

IV-B-2

Month Received	Gilster-Mary Lee Corporation	Hoffman Transportation, LLC	Kankakee Recycling & Disposal Facility	Lake County C&D Landfill	Laraway Recycling & Disposal Facility	Liberty Landfill, LLC	Livingston Landfill	Momence Packing	Natural Gas & Pipeline Co. of America	Newton County Landfill	Peoria Packing Co.	Prairie View - Will County RNG Plant	Prairie View RDF	Tank Cleaning Solutions, LLC	Verdant Specialty Solutions US LLC	Zutat Feed Solutions	Total	# Loads
January	18,000	200,000			226,390	1,162,660	287,301		115,000		3,000		363,552	219,954			2,595,857	420
February																		
March																		
April																		
May																		
June																		
July																		
August																		
September																		
October																		
November																		
December																		
<b>Totals</b>	<b>18,000</b>	<b>200,000</b>			<b>226,390</b>	<b>1,162,660</b>	<b>287,301</b>		<b>115,000</b>		<b>3,000</b>		<b>363,552</b>	<b>219,954</b>			<b>2,595,857</b>	<b>420</b>
Average	18,000	200,000			226,390	1,162,660	287,301		115,000		3,000		363,552	219,954			2,595,857	420
Treatment Costs as of 05/01/23	0.09	0.062	0.062	0.062	0.062	0.062	0.062	0.09	0.09	0.1	0.09	0	0.062	0.09	0.145	0.086		
Treatment Costs as of 05/01/22	0.086	0.059	0.059	0.059	0.059	0.059	0.059	0.086	0.086	0.08	0.086	0	0.059	0.086	0.138	0.082		



## Monthly TSS/BOD Loading Report

January, 2024

1600 West Brookmont Blvd.  
Kankakee, IL 60901  
Phone: 815-933-0444  
Fax: 815-933-0104

Hauler	Gallons	Lbs TSS	Lbs BOD
Gilster-Mary Lee Corporation	18,000	741	1,641
Hoffman Transportation, LLC	200,000	80	1,555
Laraway Recycling & Disposal Facility	226,390	592	1,795
Liberty Landfill, LLC	1,162,660	1,500	21,194
Livingston Landfill	287,301	402	7,057
Natural Gas & Pipeline Co. of America	115,000	15	75
Peoria Packing Co.	3,000	598	313
Prairie View RDF	363,552	462	7,190
Tank Cleaning Solutions, LLC	219,954	465	4,236
<b>Totals:</b>	<b>2,595,857</b>	<b>4,855</b>	<b>45,057</b>

# KRMA Flows Report

	Kankakee Flows				Bradley Flows				Bourbonnais Flows				Aroma Park Flows				TOTALS	TOTALS
	YTD Actual Flows	Actual Flows	% of Total	Estimated %	YTD Actual Flows	Actual Flows	% of Total	Estimated %	YTD Actual Flows	Actual Flows	% of Total	Estimated %	YTD Actual Flows	Actual Flows	% of Total	Estimated %		
5/31/2021	346,570	346,570	65.99%	63.38%	60,497	60,497	11.52%	12.36%	116,826	116,826	22.24%	23.92%	1,290	1,290	0.25%	0.34%	525,183	1,000
6/30/2021	634,090	287,520	66.76%	63.38%	103,540	43,043	9.99%	12.36%	215,789	98,963	22.98%	23.92%	2,460	1,170	0.27%	0.34%	430,696	1,000
7/31/2021	930,320	296,230	70.61%	63.38%	137,501	33,961	8.10%	12.36%	304,021	88,232	21.03%	23.92%	3,562	1,102	0.26%	0.34%	419,525	1,000
8/31/2021	1,162,810	232,490	67.69%	63.38%	166,666	29,165	8.49%	12.36%	384,716	80,695	23.49%	23.92%	4,699	1,137	0.33%	0.34%	343,487	1,000
9/30/2021	1,369,410	206,600	66.65%	63.38%	193,616	26,950	8.69%	12.36%	460,262	75,546	24.37%	23.92%	5,600	0,901	0.29%	0.34%	309,997	1,000
10/31/2021	1,787,590	418,180	67.50%	63.38%	265,529	71,913	11.61%	12.36%	587,784	127,522	20.58%	23.92%	7,475	1,875	0.30%	0.34%	619,490	1,000
11/30/2021	2,068,130	280,540	65.59%	63.38%	314,880	49,351	11.54%	12.36%	684,120	96,336	22.52%	23.92%	8,937	1,462	0.34%	0.34%	427,689	1,000
12/31/2021	2,315,330	247,200	60.47%	63.38%	362,817	47,937	11.73%	12.36%	796,476	112,356	27.48%	23.92%	10,246	1,309	0.32%	0.34%	408,802	1,000
1/31/2022	2,567,800	252,470	64.39%	63.38%	408,584	45,767	11.67%	12.36%	889,113	92,637	23.63%	23.92%	11,455	1,209	0.31%	0.34%	392,083	1,000
2/28/2022	2,952,230	384,430	66.67%	63.38%	471,548	62,964	10.92%	12.36%	1,016,840	127,727	22.15%	23.92%	12,972	1,517	0.26%	0.34%	576,638	1,000
3/31/2022	3,301,220	348,990	61.44%	63.38%	539,845	68,297	12.02%	12.36%	1,165,653	148,813	25.20%	23.92%	14,880	1,908	0.34%	0.34%	568,008	1,000
4/30/2022	3,673,760	372,540	63.95%	63.38%	608,424	68,579	11.77%	12.36%	1,305,059	138,406	23.93%	23.92%	16,901	2,021	0.35%	0.34%	582,546	1,000
		3673,760	65.554%			608,424	10.857%			1305,059	23.287%			16,901	0.302%		5804,144	12,000
	Kankakee Flows				Bradley Flows				Bourbonnais Flows				Aroma Park Flows				TOTALS	TOTALS
	YTD Actual Flows	Actual Flows	% of Total	Estimated %	YTD Actual Flows	Actual Flows	% of Total	Estimated %	YTD Actual Flows	Actual Flows	% of Total	Estimated %	YTD Actual Flows	Actual Flows	% of Total	Estimated %		
5/31/2022	327,190	327,190	63.29%	65.55%	59,684	59,684	11.54%	10.86%	128,467	128,467	24.85%	23.29%	1,632	1,632	0.32%	0.30%	516,973	1,000
6/30/2022	589,310	262,120	67.13%	65.55%	36,566	36,566	9.36%	10.86%	90,737	90,737	23.24%	23.29%	1,047	1,047	0.27%	0.30%	390,470	1,000
7/31/2022	845,820	256,510	69.25%	65.55%	32,633	32,633	8.81%	10.86%	80,160	80,160	21.64%	23.29%	1,083	1,083	0.29%	0.30%	370,386	1,000
8/31/2022	1,073,610	227,790	68.05%	65.55%	27,078	27,078	8.09%	10.86%	78,806	78,806	23.54%	23.29%	1,089	1,089	0.33%	0.30%	334,763	1,000
9/30/2022	1,270,980	197,370	66.81%	65.55%	24,400	24,400	8.26%	10.86%	72,615	72,615	24.58%	23.29%	1,022	1,022	0.35%	0.30%	295,407	1,000
10/31/2022	1,478,340	207,360	65.54%	65.55%	29,974	29,974	9.47%	10.86%	78,126	78,126	24.69%	23.29%	0,949	0,949	0.30%	0.30%	316,409	1,000
11/30/2022	1,675,230	196,890	63.27%	65.55%	30,268	30,268	9.73%	10.86%	83,143	83,143	26.72%	23.29%	0,899	0,899	0.29%	0.30%	311,200	1,000
12/31/2022	1,914,460	239,230	64.26%	65.55%	40,083	40,083	10.77%	10.86%	91,917	91,917	24.69%	23.29%	1,026	1,026	0.28%	0.30%	372,256	1,000
1/31/2023	2,164,510	250,050	64.07%	65.55%	42,295	42,295	10.84%	10.86%	96,867	96,867	24.82%	23.29%	1,043	1,043	0.27%	0.30%	390,255	1,000
2/28/2023	2,416,300	251,790	59.61%	65.55%	51,947	51,947	12.30%	10.86%	117,385	117,385	27.79%	23.29%	1,262	1,262	0.30%	0.30%	422,384	1,000
3/31/2023	2,808,030	391,730	60.21%	65.55%	89,485	89,485	13.75%	10.86%	167,099	167,099	25.68%	23.29%	2,277	2,277	0.35%	0.30%	650,591	1,000
4/30/2023	3,098,910	290,880	64.32%	65.55%	143,995	54,510	12.05%	10.86%	272,361	105,262	23.27%	23.29%	3,892	1,815	0.36%	0.30%	452,267	1,000
		3,098,910	64.248%			518,923	10.759%			1,190,584	24.684%			14,944	0.310%		4,823,361	12,000
	Kankakee Flows				Bradley Flows				Bourbonnais Flows				Aroma Park Flows				TOTALS	TOTALS
	YTD Actual Flows	Actual Flows	% of Total	Estimated %	YTD Actual Flows	Actual Flows	% of Total	Estimated %	YTD Actual Flows	Actual Flows	% of Total	Estimated %	YTD Actual Flows	Actual Flows	% of Total	Estimated %		
5/31/2023	241,200	241,200	63.06%	64.25%	42,940	42,940	11.23%	10.76%	97,296	97,296	25.44%	24.68%	1,078	1,078	0.28%	0.31%	382,514	1,000
6/30/2023	429,120	187,920	66.42%	64.25%	27,600	27,600	9.76%	10.76%	66,500	66,500	23.50%	24.68%	0,910	0,910	0.32%	0.31%	282,930	1,000
7/31/2023	634,720	205,600	61.28%	64.25%	35,730	35,730	10.65%	10.76%	93,260	93,260	27.80%	24.68%	0,920	0,920	0.27%	0.31%	335,510	1,000
8/31/2023	859,940	225,220	65.28%	64.25%	36,170	36,170	10.48%	10.76%	82,660	82,660	23.96%	24.68%	0,970	0,970	0.28%	0.31%	345,020	1,000
9/30/2023	1,062,280	202,340	64.02%	64.25%	32,810	32,810	10.38%	10.76%	79,930	79,930	25.29%	24.68%	0,980	0,980	0.31%	0.31%	316,060	1,000
10/31/2023	1,280,950	218,670	55.75%	64.25%	52,360	52,360	13.35%	10.76%	120,040	120,040	30.60%	24.68%	1,170	1,170	0.30%	0.31%	392,240	1,000
11/30/2023	1,487,430	206,480	61.78%	64.25%	35,660	35,660	10.67%	10.76%	91,140	91,140	27.27%	24.68%	0,960	0,960	0.29%	0.31%	334,240	1,000
12/31/2023	1,754,640	267,210	58.46%	64.25%	52,760	52,760	11.54%	10.76%	135,780	135,780	29.71%	24.68%	1,300	1,300	0.28%	0.31%	457,050	1,000
1/31/2024	2,206,160	451,520	62.71%	64.25%	88,360	88,360	12.27%	10.76%	177,770	177,770	24.69%	24.68%	2,370	2,370	0.33%	0.31%	720,020	1,000
2/29/2024	2,206,160		0.00%	64.25%	0,000		0.00%	10.76%	0,000		0.00%	24.68%	0,000		0.00%	0.31%	0,000	0,000
3/31/2024	2,206,160		0.00%	64.25%	0,000		0.00%	10.76%	0,000		0.00%	24.68%	0,000		0.00%	0.31%	0,000	0,000
4/30/2024	2,206,160		0.00%	64.25%	0,000		0.00%	10.76%	0,000		0.00%	24.68%	0,000		0.00%	0.31%	0,000	0,000
		2,206,160	61.874%			404,390	11.341%			944,376	26.486%			10,658	0.299%		3,565,584	9,000

**Flows**  
**KRMA Treatment Facility**  
**January, 2024**

Date	PRECIPITA INCHES	PLANT MGD	Kankakee MGD	BOURB. MGD	BradleyFlow MGD	AromaPark MGD
1/1/2024	.00	15.58	9.43	4.26	1.83	.06
1/2/2024	.00	14.55	8.70	4.05	1.75	.05
1/3/2024	.00	14.62	9.18	3.77	1.63	.04
1/4/2024	.00	13.91	8.80	3.55	1.52	.04
1/5/2024	.00	13.50	8.54	3.42	1.50	.04
1/6/2024	.23	13.48	8.31	3.55	1.58	.04
1/7/2024	.00	13.44	8.00	3.75	1.64	.04
1/8/2024	.51	13.52	8.33	3.53	1.62	.04
1/9/2024	.51	24.24	14.14	7.19	2.84	.07
1/10/2024	.00	25.01	14.17	7.66	3.11	.08
1/11/2024	.45	23.78	15.31	5.75	2.63	.09
1/12/2024	.00	26.55	15.24	7.55	3.67	.09
1/13/2024	.00	30.55	17.04	9.19	4.23	.09
1/14/2024	.00	31.00	21.37	6.24	3.31	.09
1/15/2024	.81	24.66	16.18	5.48	2.91	.09
1/16/2024	.00	21.10	13.48	4.89	2.64	.09
1/17/2024	.06	19.18	12.19	4.49	2.44	.07
1/18/2024	.11	17.92	11.36	4.19	2.32	.05
1/19/2024	.00	18.46	12.27	3.91	2.23	.05
1/20/2024	.00	17.55	11.73	3.80	1.96	.05
1/21/2024	.04	16.13	10.39	3.73	1.96	.05
1/22/2024	.53	15.80	10.38	3.64	1.73	.05
1/23/2024	.20	20.48	12.04	5.84	2.54	.06
1/24/2024	.37	31.23	17.51	9.40	4.23	.09
1/25/2024	.48	34.06	19.22	9.79	4.91	.14
1/26/2024	.14	41.86	23.85	11.48	6.39	.14
1/27/2024	.00	42.83	29.66	8.38	4.65	.14
1/28/2024	.00	35.16	22.94	7.83	4.25	.14
1/29/2024	.04	32.96	22.68	6.53	3.65	.11
1/30/2024	.00	29.29	19.99	5.74	3.46	.10
1/31/2024	.00	27.60	19.09	5.19	3.23	.09
Total	4.48	720.01	451.52	177.77	88.36	2.37
Average	.14	23.23	14.57	5.73	2.85	.08
Minimum	.00	13.44	8.00	3.42	1.50	.04
Maximum	.81	42.83	29.66	11.48	6.39	.14
# of data	31.00	31.00	31.00	31.00	31.00	31.00



INTERNATIONAL UNION OF OPERATING ENGINEERS • AFL-CIO

# LOCAL 399

February 8, 2024

Mr. David Tyson  
Executive Director  
Kankakee River Metropolitan Agency  
1600 W. Brookmont Blvd.  
Kankakee, IL 60901

Re: Health & Welfare Increase  
Kankakee River Metropolitan Agency – Management

Dear Mr. Tyson:

Pursuant to the terms of our Agreement, the table below outlines the distribution rates for the 2024-2025 contract year. All increases are effective June 1, 2024.

<u>BENEFIT</u>	<u>CURRENT RATE</u>	<u>INCREASE 6/1/2024</u>	<u>NEW RATE</u>
Health & Welfare	\$1,231.00/mo.	\$0.40/hr.	\$1,300.00/mo.

Benefits are the same for all classifications.

Please call the office should you have any questions or comments.

Sincerely,

Patrick J. Kelly  
President & Business Manager

PJK/rs

cc: Mike Masterson