

## AGENDA

### KANKAKEE RIVER METROPOLITAN AGENCY MEETING

Wednesday, October 22, 2025

9:00 AM in KRMA Board Room

1600 Brookmont Blvd., Kankakee, IL 60901

- I. **Roll Call**
- II. **Public Comment**
- III. **Approval of Board Minutes**
  - A. September 25, 2025 – Regular Board Meeting
- IV. **Reports**
  - A. Operations & Maintenance Report
    1. Monthly Report (MOR)
  - B. Executive Director Report
    1. Water, Gas & Electric Use/Cost
    2. Hauled in Waste Summary
    3. Operations Report
  - C. Financial Report
    1. Reports
      - a. Draft Audit
    2. Flows Graphs
  - D. Communications
- V. **Old Business**
  - A. Update on Engineering for Phase 1, Phase 2, Phase 3
    1. Projections of Phase 1, Phase 2, and Phase 3 impacts on the rates for members municipalities
  - B. Assistant Superintendent Update
  - C. Update Local Financing for Phase 1
- VI. **New Business**
  - A. BID Results/Recommendation for Construction for Phase 1
  - B. Review and Consideration of 2026-2027 Agenda and Board Meeting Dates
  - C. Presentation by Richard Tyson regarding Water Leadership Institute Program
  - D. Approval of contract with Hinrich Inc for A/C Replacement in the amount of \$68,335.36.
  - E. Local 399 Health & Welfare Rate Increase for 2025-2026 contract year effective for December 1, 2025
- VII. **Executive Session**
  - A. Personnel & Probable or Imminent Litigation
- VIII. **Next Meeting**

**Thursday, November 20, 2025 (9:00 AM in KRMA Boardroom)**

**KANKAKEE RIVER METROPOLITAN AGENCY**  
**MINUTES**  
**September 25, 2025 – 9:00 A.M**  
**1600 W Brookmont Blvd.**

In attendance:

**Board of Directors:**

Mayor Christopher Curtis, City of Kankakee  
Financial Director Robert Romo, Village of Bradley  
Alderman Danita Swanson, City of Kankakee  
Alderman Larry Osenga, City of Kankakee  
Steven Hunter, Representative, City of Kankakee  
Financial Director Tara Latz, Village of Bourbonnais

**Administration:**

Dave Tyson, KRMA Executive Director  
Karen Benson, Smith, Koelling, Dykstra & Ohm, P.C via [www.gotomeeting.com](http://www.gotomeeting.com)

**Attorney:**

Neal Smith, Robbins Schwartz

**KRMA Staff:**

Bryan Kennedy, Superintendent  
Richard Tyson (RJ), Operation Management

**Other:**

Dan Small, Engineer, Strand Associates  
Ryan McGinnis, Lab Operation Manager, City of Kankakee  
Terry Memenga, Director of Public Works, Village of Bourbonnais  
Zachary Newton, Superintendent of ESU, City of Kankakee

Chairman, Mayor Curtis called the meeting to order.

I. **Roll Call**

Roll Call was taken. All Board members were present, except for Vice Chairman, Mayor Jeff Keast and Secretary Brian Stump absent. Alternate Financial Director Tara Latz, Village of Bourbonnais, sitting in for Vice Chairman Jeff Keast for deciding vote.

II. **Public Comment**

None

III. **Approval of Board Minutes - August 25, 2025 – Regular Board Meeting**

Motion to approve August 25, 2025, Regular Board Meeting minutes was made by: Dir Hunter and seconded by Dir Osenga. All board members present voted, and Alternate Tara Latz voted in favor of in favor of, and Vice Chairman Keast and Secretary Stump absent. Motion carried.

#### IV. Reports

##### A. Financial Report

###### 1. Reports

Karen Benson presented that Financial Reports. Karen stated Statement of Net Position cash is still strong, however it's down from last year. On the Statement of Revenues and Expenses under General Administrative Expenses she expressed we should be about 33% of the way through each budgeted line item for August 2025. We are at 85.6% for sludge removal which is above average, however, Exec Dir Tyson is aware that sludge removal maybe over budgeted for the fiscal year. Karen also stated Change of Net Position shows more on net income than the budget for the year to date due to the increase revenue to offset the overage in expense.

###### 2. Flows Graphs

Karen Benson presented the Flow Report. Karen explained the reconciliation process for the flows per each municipality and how adjustments will be made to offset the balance. She stated if you have any questions and/or concerns please feel free to contact her.

##### B. Operations & Maintenance Report

###### Monthly Report

Bryan Kennedy, Superintendent, presented the MOR. Bryan reference the Graphs in Attachment A. He stated per the graphs we are treating very well for ammonia (NH<sub>3</sub>), BOD and TSS meeting the permit effluent limitations. Noted, we did have a few spikes for TSS, can't necessarily correlate with precipitation or do we know what the source maybe. Bryan gave an update on the fecal/coliform, stating we are within our permit limit of 400/100 milliliters and is doing well with our disinfection. We also, been able to decrease the amount of chlorine usage and still achieve good results on our permit limit for effluent while maintaining under budget to date for chemical usage.

##### C. Executive Director Report

###### 1. Water, Gas & Electric Use/Cost

Exec. Dir. Dave Tyson presented yearly utility usage. Exec Dir Tyson stated everything within normal projective ranges.

###### 2. Hauled In Waste Summary

Exec. Dir. Tyson stated hauled in waste is above what we've been budgeting, which is positive, and is bring in extra revenue, which will help with the increase pricing of sludge hauling removal.

###### 3. Operations Report

Exec Dir Dave Tyson informed the board that the Kankakee flowmeter was installed, and we are starting to collect data. We should have a report to show how this flow meter will affect how flows are going to be distributed amongst each municipality. All flow meters will be read and if there are any excessive flow, it will be split off amongst each municipality based on their percentage of ownership of the plant. Exec Dir Tyson also informed the board members Financial Committee meetings is still being held. We are looking to be online by November 1, 2025, utilizing Bill.com. Bill.com will streamline our account payable process, provide us with current data records on where we stand financially instead monthly, and allow us to streamline the signature approvals. Also, stated we trying to get three quotes for AC, thus far we have only received one and should have another by next week. He explained, the challenge we are facing regarding the actual current unit we have and trying to see if there's other options we can use. Exec Dir Tyson stated our injured employee was cleared to returned back to work as of September 22, 2025. We have advertised internally and externally through KCC, JCC, AWWA, and the daily journal for EIC Technician, due to resignation of follow EIC Technician. Dir Hunter asked about the new hire from Aqua. Exec Dir Tyson stated his name is Tyler Stewart who came with three years of experience, his Class 4 certification, and he started on September 22, 2025. Also stated we are going to keep some of O&M resumes on file for six months just in case something else does open up and we need to hire.

**D. Communications**

None

**V. Old Business**

**A. Update on Engineering for Phase 1, Phase 2, Phase 3**

Exec Dir Tyson stated that bid opening for Phase 1 was supposed to be Wednesday, September 24, 2025, however, we decided to extend the bid date until Tuesday, October 14, 2025, at 2:00pm, due to Bidders expressing concerns on being able to meet the deadline and to hopefully get more bidders.

**1. Projections of Phase 1, Phase 2, and Phase 3 impacts on the rates for the members municipalities**

None

**B. Assistant Superintendent Update**

Chairman Curtis informed the Board that interviews have been conducted.

**VI. New Business**

**A. Update Local Financing for Phase 1**

Chairman Curtis stated we should look into some local financial institutions for borrowing for the shortfall due to Phase 1 project and replenish reserves. There were some discussions regarding the local Financial Institutes.

**B. Approval of an Ordinance Providing for Local Preference in the Awarding of Contracts Competitively Bid by KRMA**

Attorney Neal Smith gave some information regarding the legal guidelines regarding local preference in the awarding contracts and presented an ordinance for approval. Motion to approve the Ordinance that will provide local preference in the awarding of contracts competitively bid with the change in Section 3: Kankakee County versus the four municipalities was made by Dir Osenga and seconded by Dir Romo. All board members present voted, and Alternate Tara Latz voted in favor of in favor of, and Vice Chairman Keast and Secretary Stump absent. Motion carried.

**C. New O&M Specialist Hiring**

Discussed in Operation Report

**VII. Executive Session**

**Personnel & Probable or Imminent Litigation**

Motion to go into Executive Session to discuss Personnel and Probable or Imminent Litigations issue under 5 ILCS 120/2(c)(1) and 5 ILCS 120/2(c)(11) was made by Dir Swanson and seconded by Dir Osenga. Motion carried.

Roll call was taken and all board members were present and Alternate Financial Director Tara Latz, Village of Bourbonnais, sitting in for Vice Chairman Jeff Keast for deciding vote, except for Vice Chairman Keast and Secretary Stump absent.

The Board went into Executive Session.

Roll call was taken and all board members were present and Alternate Financial Director Tara Latz, Village of Bourbonnais, sitting in for Vice Chairman Jeff Keast for deciding vote, except for Vice Chairman Keast and Secretary Stump absent.

Motion to exit Executive Session was made by Dir Osenga and seconded by Dir Hunter. Motion carried.

Roll call was taken and all board members were present and Alternate Financial Director Tara Latz, Village of Bourbonnais, sitting in for Vice Chairman Jeff Keast for deciding vote, except for Vice Chairman Keast and Secretary Stump absent.

Return to Open Session.

Roll call was taken and all board members were present and Alternate Financial Director Tara Latz, Village of Bourbonnais, sitting in for Vice Chairman Jeff Keast for deciding vote, except for Vice Chairman Keast and Secretary Stump absent.

With the Board back in open session there was no action taken.

VIII. **Next Meeting**

Next Regular Board Meeting- **Thursday, October 23, 2025 (9:00 A.M. at KRMA Board Room)**

Motion to Adjourn was made by: Dir Hunter and seconded by Director Swanson. Motion Carried.



*Kankakee River Metropolitan Agency*

*Providing Wastewater Treatment to the Kankakee River Valley*



HELLO !

September

"New month, new intentions, new goals,  
new love, new light, and new beginnings."



**Monthly Operations Report**

**September 2025**

## KRMA'S SEPTEMBER HIGHLIGHTS:

The KRMA team continues to maintain process control parameters to provide a clean effluent well within discharge limits. Recently modified chlorine residual monitoring procedures continue to prove effective at providing proper disinfection and neutralization prior to discharging to the Kankakee River.

Preventative and corrective maintenance continue to keep the plant operating optimally. Screw pump annual and semi-annual work orders were completed, the waste gas burner flame arrestor was replaced, and existing arrestor cleaned and prepared for re-installation, the DAFT (dissolved air floatation thickening) odor control unit was cleaned and serviced, RAS (return activated sludge) pump annual work orders completed, and mini-trucks routine service performed, among many other maintenance items.

The City of Kankakee IT staff began assisting with inspection and evaluation of aging KRMA network communications equipment to plan for replacement. A future meeting is planned with KRMA, City IT staff and Strand engineering to discuss the specific communication needs of the SCADA (supervisory control and data acquisition) network.

A new microscope with video camera was purchased to assist with identification of microorganisms crucial to plant biological processes. This equipment is an addition and upgrade to the existing microscope that will facilitate more in-depth analyses aimed at troubleshooting potential problematic conditions in earlier stages of development. An example of this is historically seasonal establishment of filamentous bacteria populations that inhibit proper settling during colder temperatures. The additional workstation will be setup adjacent to the KRMA training room and is also planned to be utilized for training and educational purposes.

## 1.0 WASTEWATER TREATMENT FACILITY OPERATION

**Attachment A** Details the monthly operational information for the facility.

## 2.0 INFLUENT FLOW

**Table 2.1** Summarizes total flow and average daily flow to the facility from each municipality.

**Attachment B** Details daily flow rates.

**Table 2.1**  
*Plant Flows*

Municipality	Plant Influent	Kankakee	Bourbonnais	Bradley	Aroma Park
Total Flow (MGD)	281.73	176.68	77.75	26.48	.82
Daily Average Flow (MGD)	9.39	5.89	2.59	.88	.03

### 3.0 EFFLUENT QUALITY

**Table 3.1** Summarizes the effluent quality data.

**Table 3.1**  
*Effluent Quality*

	IEPA Limits	Effluent Average
Biochemical Oxygen Demand (BOD) – Monthly Average	20 mg/l	7 mg/l
Total Suspended Solids (TSS) - Monthly Average	25 mg/l	13 mg/l
PH	6-9 SU	7.11 SU
Chlorine Residual	0.020 mg/l	0.02 mg/l
Fecal Coliform	400/100 ml	23/100 ml

### ODOR ISSUES:

- There was no odor complaint registered at the KRMA facility in September.
- There were no odor complaints registered at the East Gate site in September.

## 4.0 PERSONNEL

The Agency would like to congratulate these KRMA employees on their September work anniversaries.

John Lund, O & M Operator Specialist, 7 years

Maxwell Gossett, O & M Operator Specialist, 7 years

Michelle Howard, Administrative Specialist, 2 years

Thank you all for being such a valuable and loyal member of our team. Your knowledge, hard work, and dedication is greatly appreciated.

The Agency would like to say “HAPPY BIRTHDAY” to all the employees with birthdays in September.

Employees continue to follow the COVID-19 Warning Signs and Safety Tips. One of the best ways to help keep workers healthy is to stay home except for necessary outings, and when going out for the necessities, steps should be taken to minimize the risk of spreading illness.

## 5.0 MAINTENANCE AND REPAIR

Number of Work Orders Closed for the Month:	920
Hours of Scheduled Work Orders Performed:	639.06

## 6.0 SLUDGE HANDLING

Start Date:	09/01/2025
End Date:	09/30/2025

Gallons of sludge produced and sent to thickening:	2,224,390.00
Gallons of sludge put into storage after thickening:	1,223,050.00
Sludge removed from the plant for land application:	745,000.00
Sludge remaining in storage:	2,292,750.00

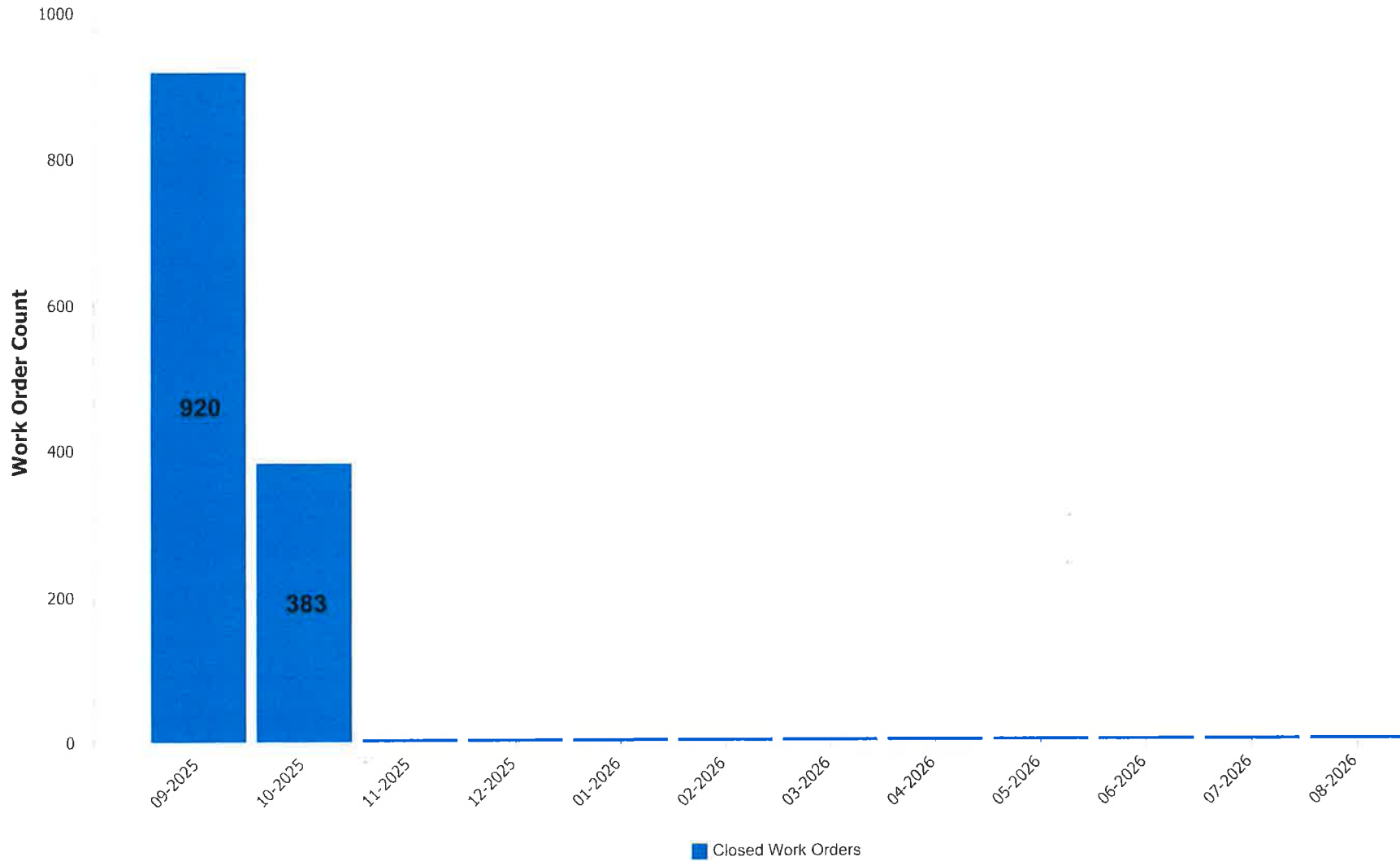
## 7.0 WATER USAGE

SEPTEMBER 2025 (30 DAYS): 52,884 CU FT= 395,600 GALS. = \$4109.60

NUMBER OF DAYS IN THE BILLING CYCLE: 30

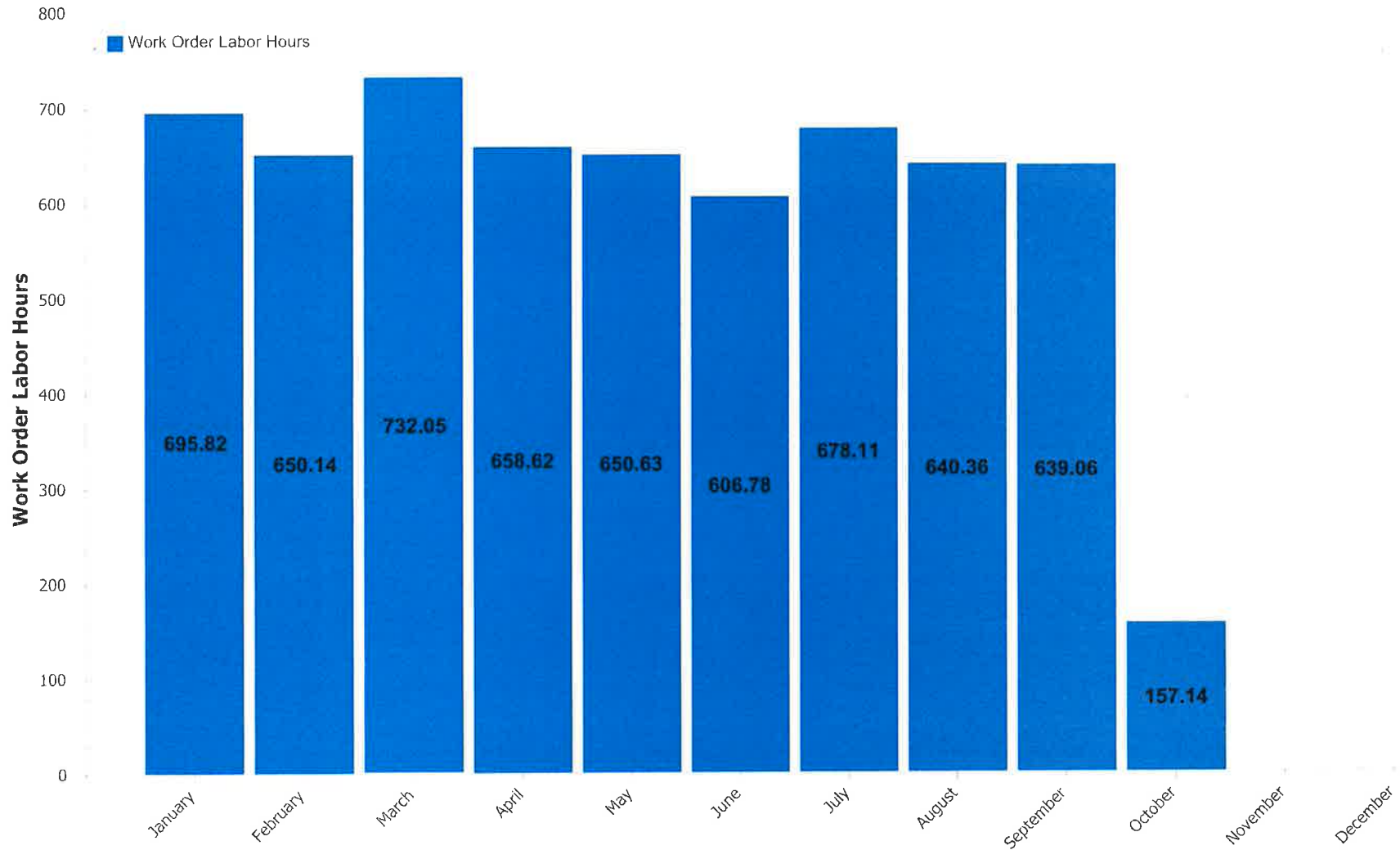
## Work Orders Closed By Month

From September, 2025 to August, 2026



# Work Order Labor Hours by Month

2025



# KANKAKEE RIVER METRO AGENCY Wastewater Report, September 2025

For updates on your plant in-between these monthly reports, please visit our wastewater dashboard <https://iwss.uillinois.edu>

## LOCATION: KANKAKEE RIVER METRO AGENCY (Kankakee County)

### Catchment Information

<b>Population Served</b>	56,317
<b>NPDES</b>	IL0021784
<b>zipcode</b>	60901
<b>IL Covid Region</b>	7

## SARS-CoV-2 LEVELS IN WASTEWATER

Wastewater is analyzed using digital PCR (dPCR) to determine the concentration of the SARS-CoV-2 virus in a sample. The nucleocapsid protein (N) gene of the virus is targeted in the assay, and results are reported in gene copies per liter of starting wastewater.

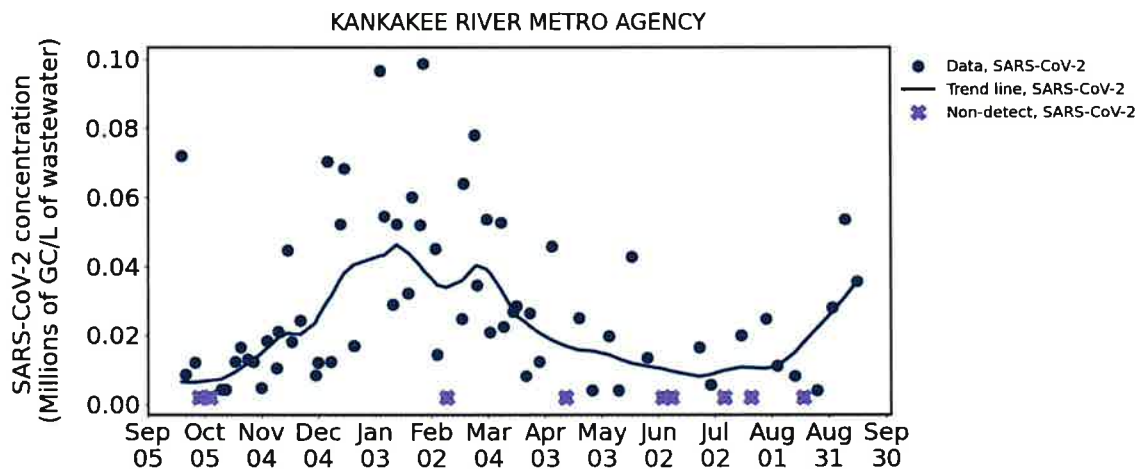


Figure 1. Time series plot of SARS-CoV-2 viral concentrations in millions of gene copies per liter (GC/L) of wastewater. Historical data can be found on the IWSS dashboard, link above.

## SARS-CoV-2 SAMPLING RESULTS - LAST 8 SAMPLES

Date	SARS-CoV-2 (GC/L)
2025-09-15	35,625
2025-09-09	53,700
2025-09-02	27,900
2025-08-25	4,125
2025-08-18	Non-detect

2025-08-13	8,100
2025-08-04	11,100
2025-07-29	24,750

## SARS-CoV-2 LINEAGES IN WASTEWATER

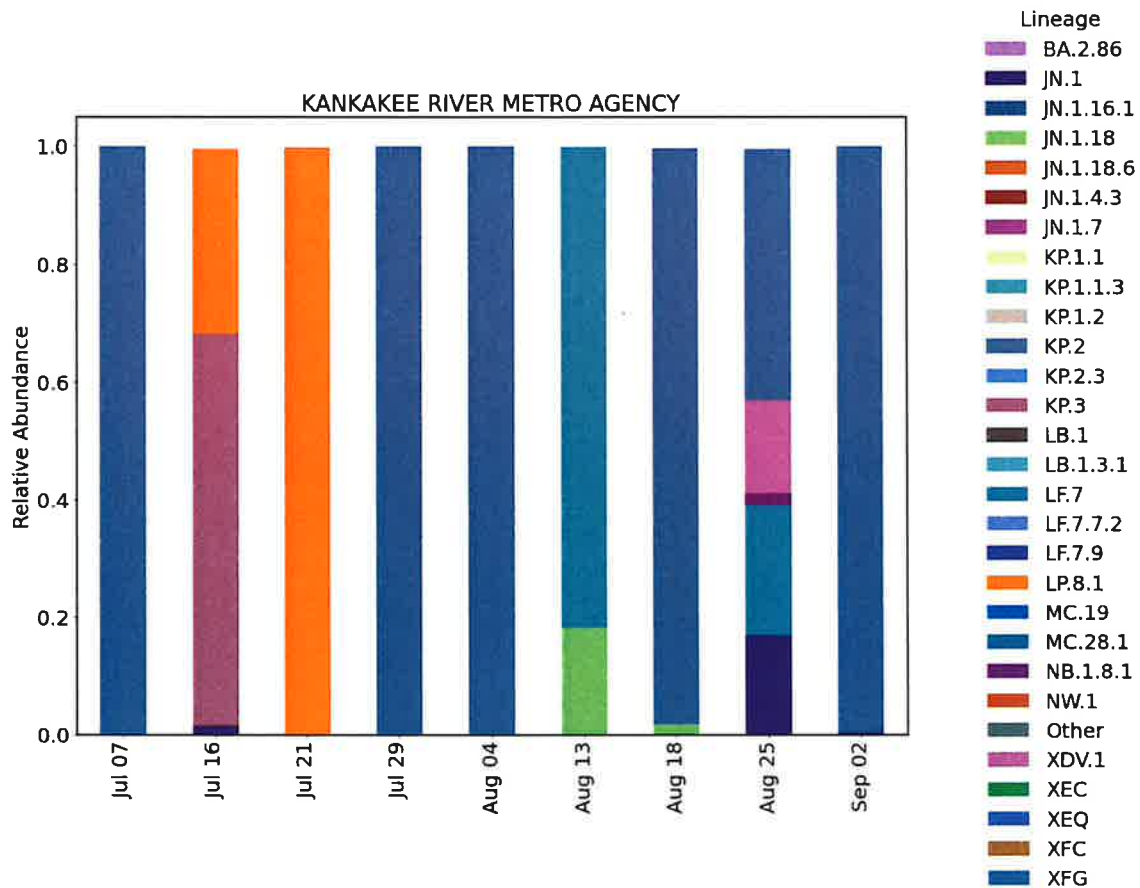


Figure 2. Stacked barplot showing the relative abundances of SARS-CoV-2 lineages in wastewater samples. All lineages in the legend, excluding "Other," are associated with Omicron. The most recently available two months worth of data are shown.

## INFLUENZA A/B LEVELS IN WASTEWATER

Wastewater is analyzed using digital PCR (dPCR) to determine the concentration of influenza A and influenza B viruses in a sample. Results are reported in gene copies per liter of starting wastewater.

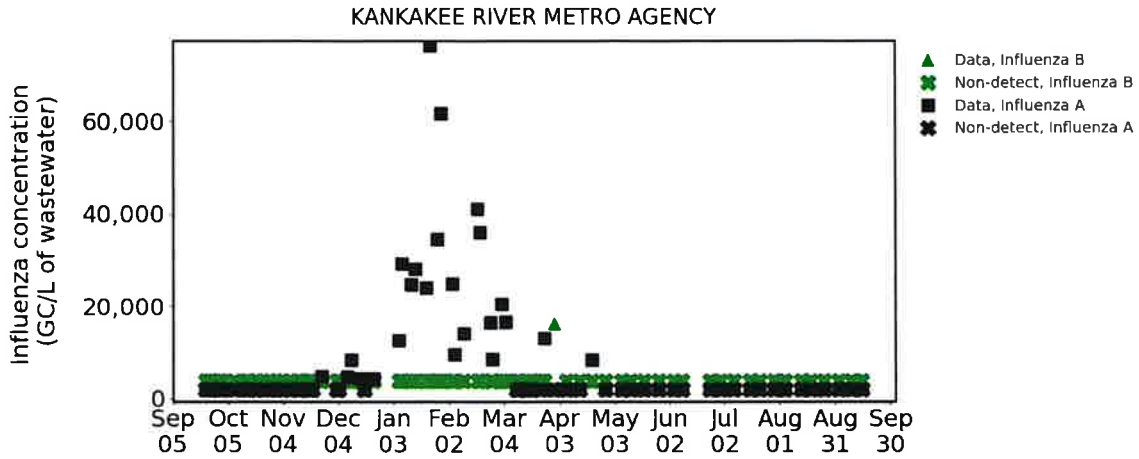


Figure 3. Time series plot of Influenza A/B viral concentrations in gene copies per liter (GC/L) of wastewater. Historical data can be found on the IWSS dashboard, link above.

## INFLUENZA A/B SAMPLING RESULTS - LAST 8 SAMPLES

Date	Influenza A (GC/L)	Influenza B (GC/L)
2025-09-15	Non-detect	Non-detect
2025-09-09	Non-detect	Non-detect
2025-09-02	Non-detect	Non-detect
2025-08-25	Non-detect	Non-detect
2025-08-18	Non-detect	Non-detect
2025-08-13	Non-detect	Non-detect
2025-08-04	Non-detect	Non-detect
2025-07-29	Non-detect	Non-detect

## RSV LEVELS IN WASTEWATER

Wastewater is analyzed using digital PCR (dPCR) to determine the concentration of Respiratory Syncytial Virus (RSV) in a sample. Results are reported in gene copies per liter of starting wastewater.

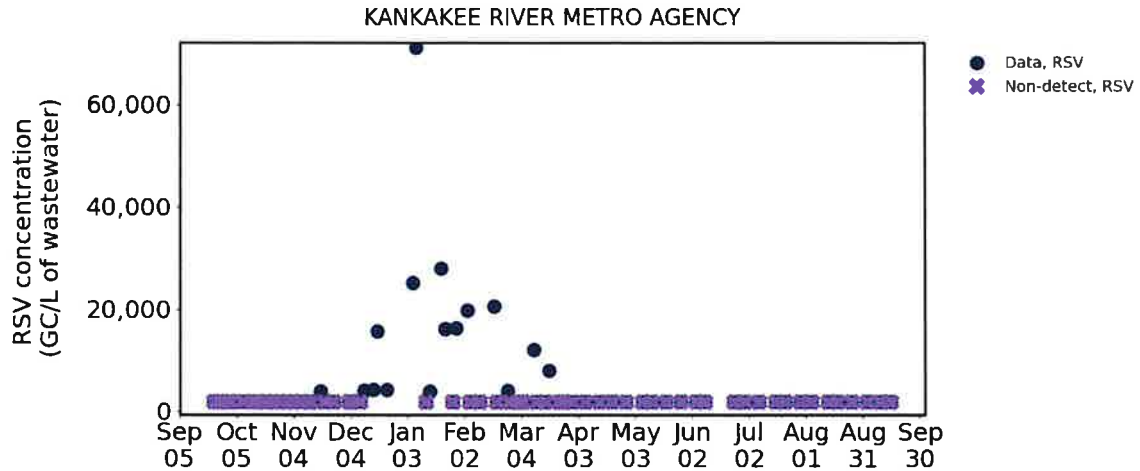


Figure 4. Time series plot of RSV viral concentrations in gene copies per liter (GC/L) of wastewater. Historical data can be found on the IWSS dashboard, link above.

## RSV SAMPLING RESULTS - LAST 8 SAMPLES

Date	RSV (GC/L)
2025-09-15	Non-detect
2025-09-09	Non-detect
2025-09-02	Non-detect
2025-08-25	Non-detect
2025-08-18	Non-detect
2025-08-13	Non-detect
2025-08-04	Non-detect
2025-07-29	Non-detect

# Guide to Interpreting Data on SARS-CoV-2, Influenza, & Respiratory Syncytial Virus (RSV) Gene Copies in Wastewater Samples

## What do the results mean?

There are several factors to consider when interpreting viral data in wastewater. The rate, magnitude, and duration of shedding may vary from one person to another and from virus to virus, thus how or even whether it is possible to translate viral levels in wastewater into precise community health metrics is an open scientific question. It is only appropriate to monitor and observe the trends of viral gene copies detected in a community over time. The data presented in tables, graphs, and trend assessments show the concentration of RNA copies in the wastewater area from the community where the wastewater was collected. A significant increase in viral gene copies over time is an indicator that cases may be increasing in the community. Wastewater data should not be interpreted in isolation but rather considered alongside other public health metrics.

## What does the number that is reported on a sample day mean?

It is a measure of how many gene copies are present in a sample, typically reported as gene copies per liter of wastewater (GC/L). Samples are typically obtained from municipal wastewater treatment plants and reflect inputs of viral material shed by the community served by the treatment plant. This number does not indicate gene copies per person or population.

## How are the gene copies measured in the wastewater?

Wastewater samples are first processed to concentrate and isolate genetic material (RNA) that is present in the sample. RNA sequences specific to SARS-CoV-2, influenza A & B, and RSV are then detected and quantified using a molecular biology tool called digital polymerase chain reaction (dPCR). During dPCR, a targeted segment of the RNA is converted to DNA and then amplified (copied many times) so it can be detected by laboratory instruments. Specific methods for sample processing and PCR-based quantification differ among wastewater monitoring projects and analytical laboratories.

## What does it mean if a data point for a sample is 0 or a non-detect?

A non-detect means that the amount of SARS-CoV-2, influenza, or RSV RNA in the wastewater sample is below the level that can be reliably detected by the quantification methods used in a given laboratory. A determination of non-detect does not necessarily mean that no viral RNA is present in the sample or in the system – rather that the levels are low enough that they cannot be reliably determined. In some cases, other components of wastewater may interfere with individual measurements, leading to an incorrect non-detection similar to false negatives that can occur from at-home and clinical testing. A non-detect does not necessarily mean that there are no infected individuals within the associated community.

## What is the viral gene copy trend line?

The trend line is calculated using Locally Weighted Scatterplot Smoothing (LOWESS), a local regression analysis. It allows us to see the change in trend over time by fitting a curve to the data. This method is useful because it reduces the influence of outliers, and wastewater data can be highly variable. LOWESS is a more complex extension of the moving average.

## **Does the number of gene copies in a sample tell us how many people are sick?**

There are not presently agreed-upon methods for translating concentration of SARS-CoV-2, influenza, or RSV genetic material in wastewater into a measure of how many people, or even what percentage of a community, have COVID-19, flu, or RSV, respectively. Variability between different wastewater sources, treatment facilities, and communities makes it difficult to translate the SARS-CoV-2, influenza, or RSV concentrations into a measure of how many people are infected in the community. However, an upward or downward trend in viral gene copies per liter of wastewater generally suggests a similar trend in the number of people infected within a given community.

## **Can I compare the number of gene copies in a sample from site to site?**

Because each community has a different mix of wastewater inputs, different populations, and different wastewater systems, it is not appropriate to compare viral gene copy numbers among communities. Instead, trends in SARS-CoV-2, influenza, or RSV concentrations from a specific community over time can be used to help understand whether cases or hospitalizations are likely to increase or decrease in the community. Sample collection methods and mechanisms, collection times, and sample variability are other factors that discourage cross-site comparison.

## **Can I compare the gene copies of different pathogens to one another?**

Because each pathogen is distinct, it is not appropriate to compare their viral gene copy numbers, even at the same site. Instead, trends in SARS-CoV-2, influenza, or RSV concentrations (increasing/decreasing) can be used to understand if cases or hospitalizations for each pathogen are likely to increase or decrease in the community.

## **Guide to Interpreting Data on SARS-CoV-2 Lineages in Wastewater Samples**

### **What are lineages and how are they determined?**

Wastewater is sequenced to determine the variants of SARS-CoV-2 virus present in a sample, a proxy for circulating variants in the community. Our sequencing strategy utilizes the entire genome of SARS-CoV-2 to identify mutations that are diagnostic of variants of the virus. Full genome coverage gives us better resolution for distinguishing variants, especially those very similar to each other. Variant names and lineage relationships are determined by the World Health Organization (WHO).

Variant: A genome that contains a particular set of mutations.

Mutation: A change in the genetic information introduced during viral replication.

Lineage: A collection of variants all related to each other based on analysis of the virus genomic sequence.

### **What is the sequencing plot showing me?**

This plot is displaying the relative abundance, or proportion, of lineages found in a wastewater sample collected on a particular date. This plot was generated after comparing sample sequences to a SARS-CoV-2 reference genome and identifying characteristic mutations that are

associated with different variants. We then calculate the percentage of each variant present in the sample. This plot summarizes the variant detections; lineages are displayed, as there are often many variants detected that are in the same lineage.

### **What do the results mean?**

The SARS-CoV-2 variants identified in a particular plant's wastewater can provide insight into the variants circulating in the population that the plant serves. This information can be useful, as there tend to be fewer clinical sequences, and those might only reflect a small proportion of the community feeling sick enough to pursue testing. The wastewater samples passively capture the virus shed in wastewater from the community where the wastewater was collected, not just those who are symptomatic. Wastewater data is not interpreted in isolation but rather considered alongside other public health metrics.

### **Does the number or type of lineages tell us how many people are sick?**

We cannot tell how many people are sick from the lineages observed in the wastewater. We can only see relative proportions of the variants that are present in the community served by the wastewater treatment plant. We do pay attention to specific mutations that have been identified as having clinical implications (e.g., for effectiveness of medications or disease severity).

### **Can I compare the lineages in a sample from site to site?**

Yes. We often detect variants in a particular plant first, and then see the relative abundance change over time, with certain lineages becoming more prevalent across the state from plant to plant. We compare these detections to sequence data from across the United States and the world.

### **Why are the dates of the sequencing data not as current as the gene copies data?**

Sequencing results are available about two weeks after sample collection. This is because the quantification of SARS-CoV-2 levels by dPCR happens first, and then genetic material (RNA) is sent for sequencing. Additionally, samples then take multiple days to run on the sequencer and computational processing of sequences takes additional time before results are available.

### **Why do the lineages in the legend change periodically?**

The lineages shown in the sequencing plot of this report are in alignment with the CDC's national genomic surveillance system. As the SARS-CoV-2 virus mutates, new variants emerge. This means there are regularly new variants that contribute to the spread of COVID-19. Some variants will disappear while others will continue to spread and even replace others as the dominant variant. These monthly reports reflect those changes as we continue to monitor for emerging variants of concern.

# **ATTACHMENT**

## **A**

# DMR Monthly Report

9/1/2025 to 9/30/2025

Var #	452	159	119	236	454	351	113	237	386
	EFF FLOW	001 Eff pH	FINAL EFF TSS	Weekly ave Eff TSS	EFF TSS	WeeklyAve EffTSS	EFF-C-BOD	Weekly Ave EffCBOD	EFF C-BOD
Date	MGD	STD UNIT	mg/L	MG/L	LBS/D	LBS/Day	mg/l	MG/L	lbs\day
9/1/2025	9.54		13.00		1034.00		4.00		318.00
9/2/2025	9.65	7.15	15.00		1207.00		4.00		322.00
9/3/2025	10.59	7.09	28.00		2473.00		8.00		707.00
9/4/2025	10.59	7.09	13.00		1148.00		6.00		530.00
9/5/2025	10.56	7.19	13.00		1145.00				
9/6/2025	9.97		12.00	15.00	997.00	1272.00	6.00	5.00	499.00
9/7/2025	9.51		13.00		1031.00		5.00		396.00
9/8/2025	9.50	7.19	7.00		555.00		5.00		396.00
9/9/2025	9.50	7.21	8.00		634.00		5.00		396.00
9/10/2025	9.33	7.12	8.00		622.00		5.00		389.00
9/11/2025	9.33	7.07	12.00		934.00		5.00		389.00
9/12/2025	9.00	7.12	12.00		900.00				
9/13/2025	8.99		15.00	11.00	1124.00	829.00	5.00	5.00	375.00
9/14/2025	8.70		13.00		943.00		4.00		290.00
9/15/2025	9.09	7.09	20.00		1516.00		6.00		455.00
9/16/2025	9.09	7.15	18.00		1364.00		5.00		379.00
9/17/2025	8.70	7.20	14.00		1016.00		5.00		363.00
9/18/2025	8.73	7.18	13.00		947.00		6.00		437.00
9/19/2025	8.90	7.19	14.00		1039.00				
9/20/2025	9.65		16.00	15.00	1288.00	1159.00	5.00	5.00	402.00
9/21/2025	9.65		19.00		1529.00		6.00		483.00
9/22/2025	9.53	7.11	18.00		1431.00		5.00		398.00
9/23/2025	9.76	7.03	10.00		814.00		5.00		407.00
9/24/2025	9.76	7.14	12.00		976.00		13.00		1058.00
9/25/2025	9.41	7.12	12.00		941.00		32.00		2510.00
9/26/2025	9.38	7.05	9.00		704.00				
9/27/2025	9.05		2.00	12.00	151.00	935.00	4.00	11.00	302.00
9/28/2025	8.68		13.00		941.00		5.00		362.00
9/29/2025	8.80	6.89	14.00		1028.00		5.00		367.00
9/30/2025	8.80	6.98	16.00		1175.00		5.00		367.00

Minimum	8.68	<b>6.89</b>	2.00	11.00	151.00	829.00	4.00	5.00	290.00
Maximum	10.59	<b>7.21</b>	28.00	<b>15.00</b>	2473.00	<b>1272.00</b>	32.00	<b>11.00</b>	2510.00
Average	9.39	7.11	<b>13.00</b>	13.00	<b>1054.00</b>	1049.00	<b>7.00</b>	7.00	<b>511.00</b>
Sum	281.73	149.36	402.00	53.00	31609.00	4195.00	169.00	26.00	13296.00

<b>Limit</b>	<b>Range 6-9</b>		<b>25</b>	<b>45</b>	<b>9383</b>	<b>16889</b>	<b>20</b>	<b>40</b>	<b>7506</b>
--------------	------------------	--	-----------	-----------	-------------	--------------	-----------	-----------	-------------

# DMR Monthly Report

9/1/2025 to 9/30/2025

Var #	352	187	191	401	101	450	115	451	455
	WeeklyAverageEffCBOD	001 EFF CL2	FECAL COLI 001	TOTAL INF FLOW	INFLUENT BOD	INF BOD LOAD	INFLUENT TSS	INF TSS	BOD REMOVAL
Date	LBS/Day	mg/L	#/100ml	MGD	mg/L	LBS/D	mg/L	LBS/D	%
9/1/2025				9.54	157.00	12493.00	264.00	21007.00	97.00
9/2/2025		.02	17.00	9.65	266.00	21406.00	294.00	23659.00	98.00
9/3/2025		.02	7.00	10.59	310.00	27385.00	468.00	41342.00	97.00
9/4/2025		.01	.00	10.59	270.00	23851.00	228.00	20141.00	98.00
9/5/2025			4.00	10.56			320.00	28183.00	
9/6/2025	450.00			9.97	238.00	19784.00	109.00	9061.00	97.00
9/7/2025				9.51	158.00	12526.00	73.00	5787.00	97.00
9/8/2025		.01	5.00	9.50	411.00	32577.00	606.00	48034.00	99.00
9/9/2025		.01	44.00	9.50	384.00	30437.00	474.00	37571.00	99.00
9/10/2025		.02	7.00	9.33	286.00	22250.00	464.00	36097.00	98.00
9/11/2025		.01	27.00	9.33	353.00	27462.00	534.00	41543.00	99.00
9/12/2025		.02	41.00	9.00			1074.00	80588.00	
9/13/2025	390.00			8.99	173.00	12965.00	1232.00	92330.00	97.00
9/14/2025				8.70	97.00	7038.00	298.00	21622.00	96.00
9/15/2025		.01	127.00	9.09	276.00	20917.00	600.00	45471.00	98.00
9/16/2025		.03	117.00	9.09	408.00	30921.00	704.00	53353.00	99.00
9/17/2025		.02	49.00	8.70	326.00	23665.00	1098.00	79705.00	98.00
9/18/2025		.05	45.00	8.73	302.00	21988.00	324.00	23590.00	98.00
9/19/2025		.05	70.00	8.90			360.00	26727.00	
9/20/2025	388.00			9.65	145.00	11672.00	126.00	10143.00	97.00
9/21/2025				9.65	152.00	12236.00	96.00	7728.00	96.00
9/22/2025		.02	68.00	9.53	308.00	24488.00	556.00	44205.00	98.00
9/23/2025		.05	25.00	9.76	186.00	15132.00	344.00	27987.00	97.00
9/24/2025		.01	8.00	9.76	592.00	48163.00	220.00	17898.00	98.00
9/25/2025		.01	1.00	9.41	270.00	21178.00	320.00	25100.00	88.00
9/26/2025		.01	11.00	9.38			488.00	38176.00	
9/27/2025	859.00			9.05	258.00	19475.00	344.00	25967.00	98.00
9/28/2025				8.68	185.00	13386.00	133.00	9624.00	97.00
9/29/2025		.02	5.00	8.80	408.00	29954.00	854.00	62698.00	99.00
9/30/2025		.01	8.00	8.80	362.00	26577.00	3626.00	266210.00	99.00

Minimum	388.00	.01	.00	8.68	97.00	7038.00	73.00	5787.00	88.00
Maximum	<b>859.00</b>	<b>.05</b>	<b>127.00</b>	10.59	592.00	48163.00	3626.00	266210.00	99.00
Average	522.00	.02	33.00	9.39	280.00	21920.00	554.00	42385.00	97.00
Sum	2088.00	.40	686.00	281.73	7281.00	569925.00	16631.00	#####	2533.00

<b>Limit</b>	<b>15012</b>	<b>0.05</b>	<b>400</b>						
--------------	--------------	-------------	------------	--	--	--	--	--	--

# DMR Monthly Report

9/1/2025 to 9/30/2025

Var #	456	1040	1041	1042	1043	255	297	953	1023
Date	TSS REMOVAL %	North Effluent DO - SCADA mg/l	South Effluent DO - SCADA mg/l	Daily Average Effluent DO mg/l	Effluent DO weekly average mg/l	FINAL EFF NH3N mg/L	Eff Nitrogen # #/day	Eff_Total Phosphorus- TP(TNT) mg/l	Effluent Total Nitrogen mg/l
9/1/2025	95.00	6.90	6.93	6.92		.14	11.22	.86	13.62
9/2/2025	95.00	6.64	6.75	6.70		.14	10.86	.67	
9/3/2025	94.00	7.05	7.03	7.04		1.35	119.26	.85	
9/4/2025	94.00	6.78	6.87	6.83		1.32	116.61	.43	
9/5/2025	96.00	7.20	7.32	7.26					
9/6/2025	89.00	6.47	6.77	6.62	6.90				
9/7/2025	82.00	7.18	7.29	7.24		.13	10.46	.89	
9/8/2025	99.00	7.69	7.62	7.66		.05	3.96	1.45	
9/9/2025	98.00	7.20	7.22	7.21		.05	3.96	.38	
9/10/2025	98.00	6.99	7.03	7.01		.13	10.19	.25	13.24
9/11/2025	98.00	6.80	6.90	6.85		.08	5.88	.31	
9/12/2025	99.00	6.90	7.00	6.95					
9/13/2025	99.00	7.14	7.11	7.13	7.15				
9/14/2025	96.00	7.04	7.12	7.08		.05	3.63	.31	
9/15/2025	97.00	7.07	7.16	7.12		.05	3.79	.36	
9/16/2025	97.00	7.03	7.02	7.03		.05	3.79	.29	
9/17/2025	99.00	7.08	6.90	6.99		.10	7.33	.30	17.74
9/18/2025	96.00	7.21	6.93	7.07		.05	3.64	.37	
9/19/2025	96.00	7.28	6.90	7.09					
9/20/2025	87.00	7.23	6.87	7.05	7.06				
9/21/2025	80.00	7.15	6.97	7.06		.16	12.56	.74	
9/22/2025	97.00	7.19	7.02	7.11		.05	3.98	1.95	12.48
9/23/2025	97.00	7.17	6.90	7.04		.14	11.06	.95	
9/24/2025	95.00	7.32	6.99	7.16		1.00	81.36	1.64	
9/25/2025	96.00	7.33	6.72	7.03		2.95	231.39	2.01	
9/26/2025	98.00	7.43	6.76	7.10					
9/27/2025	99.00	7.37	6.62	7.00	7.07				
9/28/2025	90.00	7.00	6.74	6.87				.41	
9/29/2025	98.00	7.26	6.94	7.10		.13	9.62	1.91	
9/30/2025	100.00	7.25	6.79	7.02		.05	3.67	1.98	

Minimum	80.00	6.47	6.62	<b>6.62</b>	<b>6.90</b>	.05	3.63	.25	12.48
Maximum	100.00	7.69	7.62	7.66	7.15	<b>2.95</b>	<b>231.39</b>	2.01	17.74
Average		7.11	6.97	<b>7.04</b>	7.04	.39	31.82	.88	14.27
Sum	2855.00	213.35	209.19	211.27	28.18	8.16	668.22	19.30	57.08

<b>Limit</b>				<b>min &gt;5.0</b>	<b>&gt;6.25</b>	<b>8.3</b>	<b>3115</b>		
--------------	--	--	--	--------------------	-----------------	------------	-------------	--	--

# DMR Monthly Report

9/1/2025 to 9/30/2025

Var #	1044	1048	1045	102	116	1046	1047
	Fecal Coliform at EQ Basin	EQ Basin Residual Chlorine	EQ Basin pH	EQ Basin BOD	EQ Basin TSS	EQ Basin Ammonia Nitrogen	EQ Basin Total Phosphorus
Date	col/100ml	mg/l		mg/L	mg/L	mg/l	mg/l
9/1/2025							
9/2/2025							
9/3/2025							
9/4/2025							
9/5/2025							
9/6/2025							
9/7/2025							
9/8/2025							
9/9/2025							
9/10/2025							
9/11/2025							
9/12/2025							
9/13/2025							
9/14/2025							
9/15/2025							
9/16/2025							
9/17/2025							
9/18/2025							
9/19/2025							
9/20/2025							
9/21/2025							
9/22/2025							
9/23/2025							
9/24/2025							
9/25/2025							
9/26/2025							
9/27/2025							
9/28/2025							
9/29/2025							
9/30/2025							

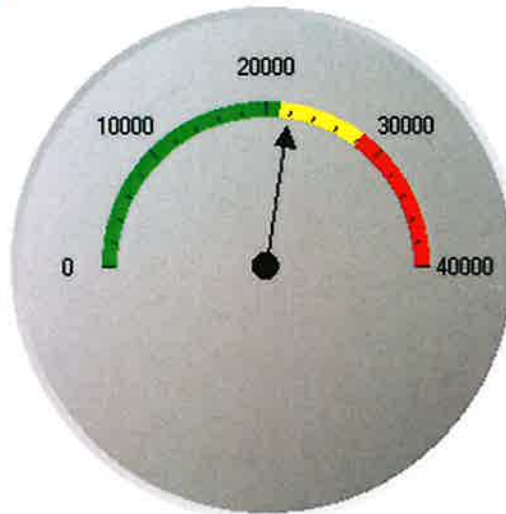
Minimum							
Maximum							
Average							
Sum							

400	0.75	Range 6-9				
-----	------	-----------	--	--	--	--

**Influent BOD loading Lbs - Monthly AVG**

**21,920 Lbs./Day**

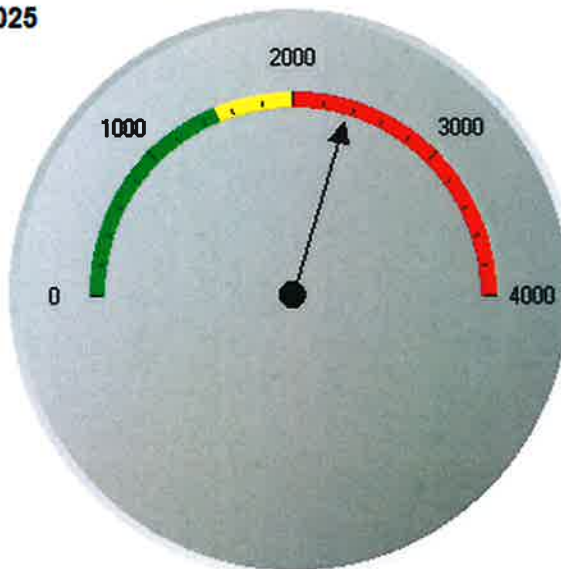
09/01/2025 - 09/30/2025



**Influent NH3 loading Lbs - Monthly AVG**

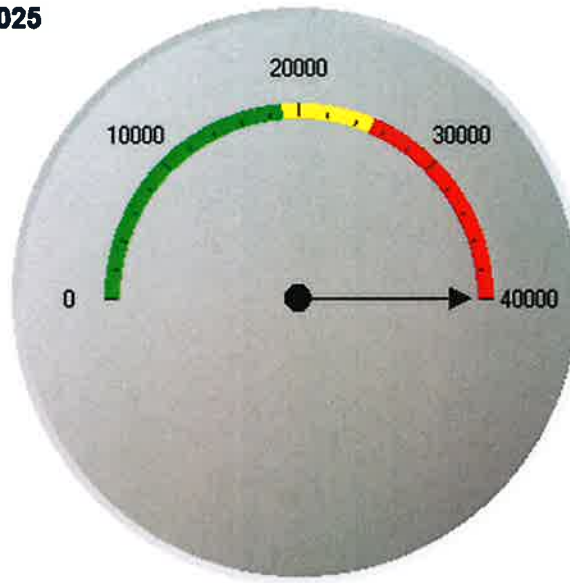
**2,371 Lbs./Day**

09/01/2025 - 09/30/2025



**Influent TSS loading Lbs - Monthly AVG**  
**09/01/2025 - 09/30/2025**

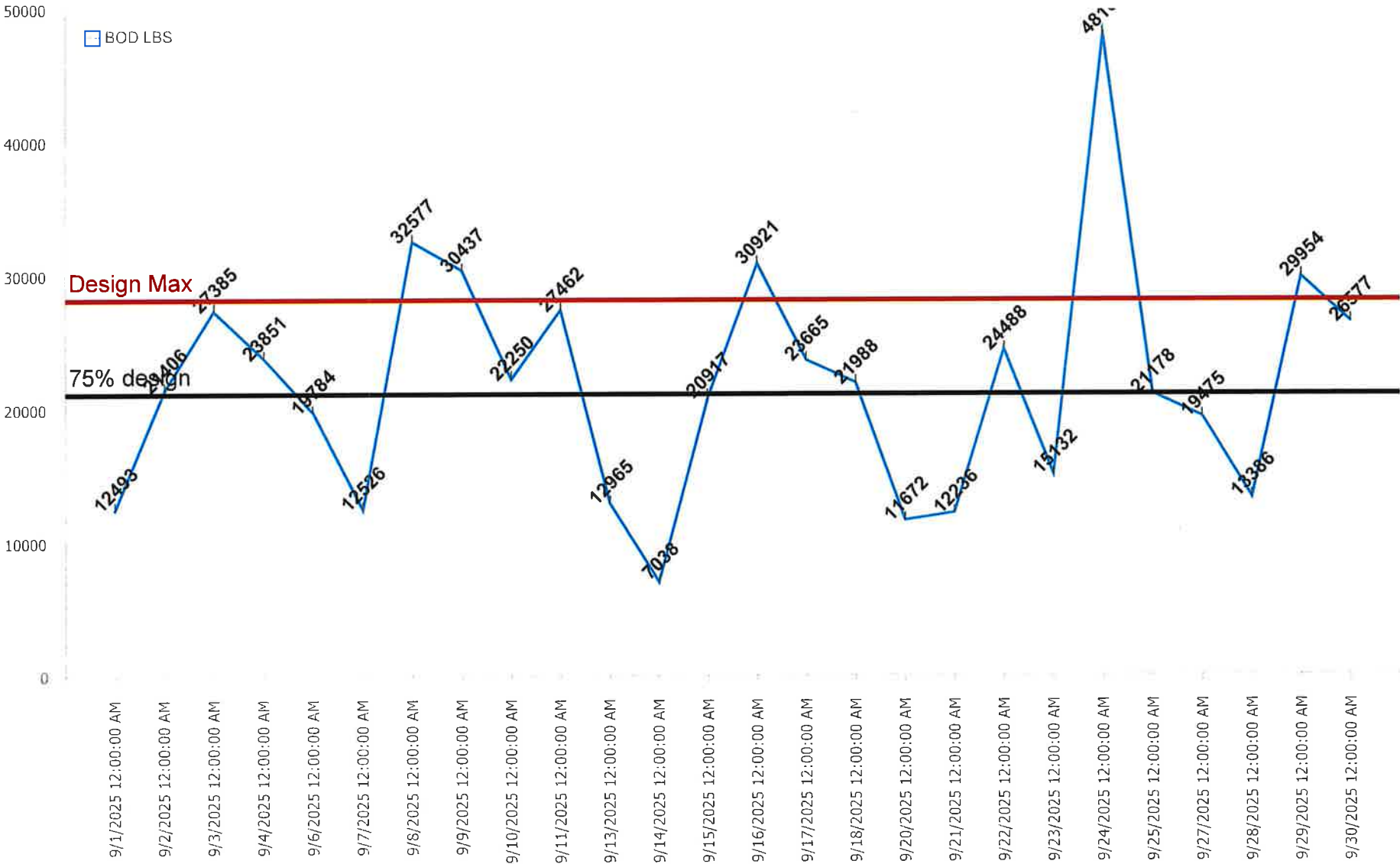
**42,385 Lbs./Day**



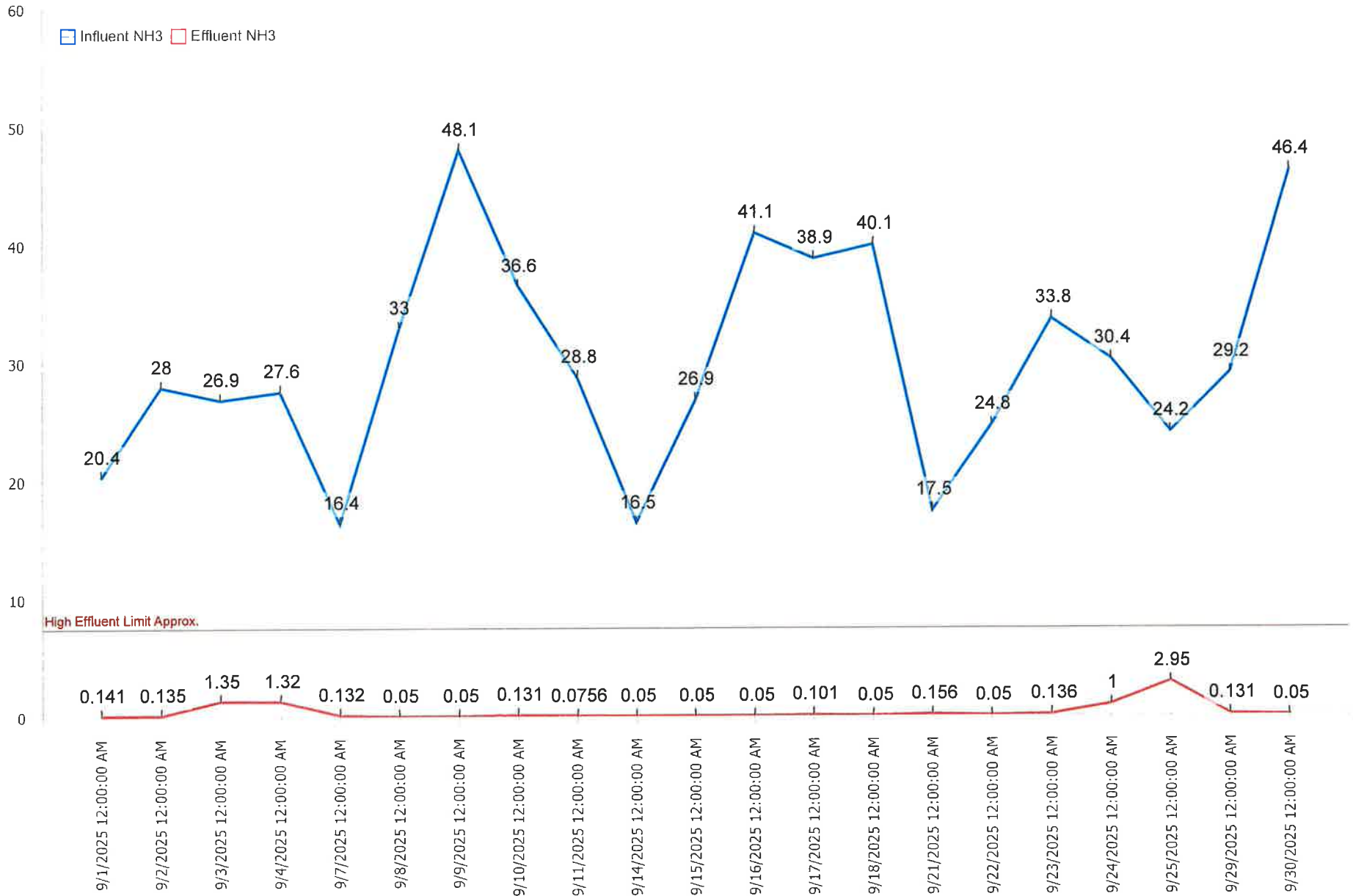
<b>0 to 18900 - Target Loading</b>
<b>18900 to 25200 - Above 75% Threshold</b>
<b>Above 25200</b>

# KRMA influent BOD pounds

Average Lbs. BOD: 21,920.23



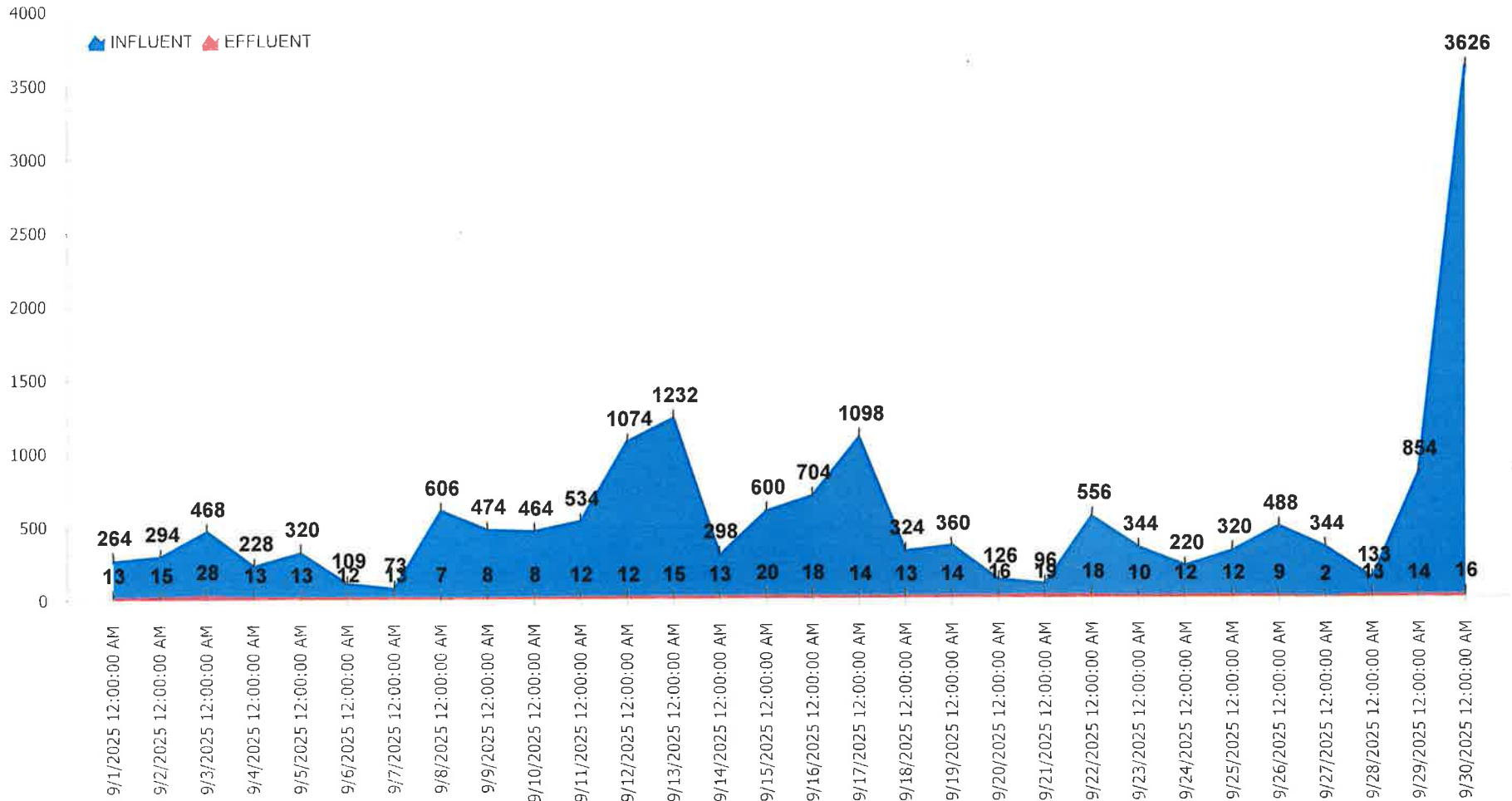
# INFLUENT NH3 MG/L VS EFFLUENT NH3 MG/L



# INFLUENT TSS VS. EFFLUENT TSS

## 9/1/2025 TO 9/30/2025

### Effluent Average 13.4



**ATTACHMENT**

**B**

Flows  
 KRMA Treatment Facility  
 September, 2025

Date	PRECIPITA INCHES	PLANT MGD	Kankakee MGD	BOURB. MGD	BradleyFlow MGD	AromaPark MGD
9/1/2025	.00	9.54	5.89	2.43	1.19	.03
9/2/2025	.00	9.65	6.34	2.43	.85	.03
9/3/2025	.00	10.59	7.16	2.38	1.03	.03
9/4/2025	.00	10.59	6.51	2.97	1.09	.03
9/5/2025	.50	10.56	6.64	2.97	.93	.03
9/6/2025	.00	9.97	6.11	2.76	1.07	.03
9/7/2025	.00	9.51	5.69	2.66	1.13	.03
9/8/2025	.00	9.50	5.90	2.66	.92	.03
9/9/2025	.00	9.50	6.01	2.57	.90	.03
9/10/2025	.00	9.33	4.60	3.88	.82	.02
9/11/2025	.00	9.33	6.04	2.44	.82	.03
9/12/2025	.00	9.00	5.79	2.40	.78	.03
9/13/2025	.00	8.99	5.72	2.42	.82	.03
9/14/2025	.00	8.70	5.30	2.54	.83	.03
9/15/2025	.10	9.09	5.72	2.54	.80	.03
9/16/2025	.00	9.09	5.84	2.40	.82	.02
9/17/2025	.00	8.70	5.44	2.37	.87	.03
9/18/2025	.00	8.73	5.54	2.36	.80	.02
9/19/2025	.00	8.90	5.65	2.41	.81	.03
9/20/2025	.28	9.65	6.13	2.58	.91	.03
9/21/2025	.00	9.65	6.15	2.57	.90	.03
9/22/2025	.12	9.53	5.70	2.99	.82	.03
9/23/2025	.00	9.76	6.18	2.74	.80	.03
9/24/2025	.11	9.76	6.24	2.67	.82	.03
9/25/2025	.00	9.41	6.07	2.50	.81	.03
9/26/2025	.00	9.38	6.14	2.45	.76	.03
9/27/2025	.00	9.05	5.66	2.43	.93	.03
9/28/2025	.00	8.68	5.43	2.36	.86	.03
9/29/2025	.00	8.80	5.52	2.49	.77	.03
9/30/2025	.00	8.80	5.57	2.39	.82	.03
Total	1.11	281.73	176.68	77.75	26.48	.82
Average	.04	9.39	5.89	2.59	.88	.03
Minimum	.00	8.68	4.60	2.36	.76	.02
Maximum	.50	10.59	7.16	3.88	1.19	.03
# of data	30.00	30.00	30.00	30.00	30.00	30.00

---

# **ATTACHMENT**

**C**



Safety Meeting  
October 14<sup>th</sup>, 2025  
9:00 am  
Agenda

**I. Safety Minutes Review**

- A. Review September 18<sup>th</sup> Safety Minutes.

**II. Old Business**

- A. There were no lost time accidents for September 2025.

**III. New Business**

- A. Cyber Security Training
- B. Safety Team Leader Report
- C. Safety Concerns

**IV. Operations Report**

- A. Open discussion

**Next Safety Meeting – November 13<sup>th</sup>, 1:30 P.M.**



Safety Minutes  
September 18<sup>th</sup>, 2025  
1:30 pm

**In attendance:**

RJ Tyson, Facilitator

Dan Combs  
Jack Renchen  
Max Gosset  
Michelle Howard  
Tawonda Brown

Jim Churney  
John Lund  
Dennis Kaiser  
Shawn Malone

Shuan Ownbey  
Josh Peters  
Nick Tucker  
Alex Bowser

Bryan Kennedy  
Rob Forsman  
Adam Napoleon  
Mike Arseneau

**Absent:**

Ron Haney

Dave Tyson

Dave Johnson

**I. Safety Minutes Review**

- A. Review August 26<sup>th</sup> Safety Minutes.

**II. Old Business**

- A. There were no lost time accidents for August 2025.

**III. New Business**

- A. Sexual Harassment Training
  - o A training video covering the sexual harassment awareness and prevention was presented.
- B. Safety Team Leader Report.
  - o The safety team leader had no new items to report.
- C. Safety Concerns.
  - o No new safety concerns were reported.

**IV. Operations Report**

- A. Open discussion.
  - o Joea from Atlas Copco has been scheduled to inspect building 45 blowers on October 8th.
  - o A fire inspection has been scheduled for September 29<sup>th</sup>.
  - o Tyler Stewart has been hired to fill the vacant O&M position. His start date is September 22<sup>nd</sup>.



#### **IV. Operations Report** *(Continued)*

- The vacant EIC position has been posted internally. Resumes and cover letters will be accepted through Monday September 22<sup>nd</sup>.
- Bear Machine is having a customer appreciation September 26<sup>th</sup> from 11-1. KRMA staff are welcome to visit their shop and enjoy a lunch.
- The estimate for Vactor 1 to repair the vacuum clutch came back at \$6,500. Authorization for the repair has been approved. The lead time is 4-5 days on the parts.

**ATTACHMENT**

**D**

## FIELD CALIBRATION SHEET

COMPANY: KRMA

CITY: BOURBONNAIS/New

FLOW METER MODEL: Isco Laser Flow

INFLUENT October 14<sup>th</sup>,2025

PRIMARY DEVICE: 36" PIPE

FLOW: 0-21.36 MGD

MEASURING DEVICE:

**CHECK POINTS:**

LEVEL? YES

FREE FLOWING? Yes

TURBULENCE? NO

BLOCKAGE? NO

SURFACE BUILD-UP? None

HEAD MEASURING DEVICE MOUNTED PROPERLY? Yes

BLOCKAGE IN HEAD MEASURING DEVICE? NO

IS FLOW METER PROGRAMMED CORRECTLY? YES

**CALIBRATION:**

**NOTE: THE ZERO POINT FOR MEASURING MUST BE LEVEL WITH THE WEIR CREST OR FLUME ZERO POINT:**

A) IF POSSIBLE, CUT-OFF FLOW & SET LEVEL TO 0.000FT

LEVEL BEFORE:

LEVEL AFTER:

B) IF FLOW CANNOT BE CUT-OFF, ADJUST LEVEL ON METER TO MEASURED POINT:

LEVEL BEFORE: Target level 12.0" As found 12.437"

LEVEL AFTER: 12.008"

C) Actual level 9.843" 3.08 MGD

**LEVEL FLOW CONVERSION CHECK:**

WITH FLOW THRU PRIMARY DEVICE, CHECK LEVEL TO FLOW CONVERSION WITH HANDBOOK OR PRIMARY DEVICE DATA SHEET: YES/OK

**TOTALIZER CHECK:**

WITH FLOW GOING THRU PRIMARY DEVICE, VERIFY THAT TOTAL FLOW IS INTEGRATING PROPERLY USING TIMED RATE METHOD: YES/OK

CALIBRATED BY: BRIAN SCHEPPLER

DATE: 10/14/2025

BC SYSTEMS INC.  
2778 N. 4000 E. ROAD  
BOURBONNAIS ILLINOIS 60914  
PHONE: 1-815-671-1257  
FAX: 1-815-802-0219

## FIELD CALIBRATION SHEET

COMPANY: KRMA

CITY: KANKAKEE

FLOW METER MODEL: Siemens Hydro Ranger #2

INFLUENT October 14th,2025

PRIMARY DEVICE: Flume

FLOW: 0-73.425 MGD

MEASURING DEVICE: Ultrasonic

CHECK POINTS:

LEVEL? YES

FREE FLOWING? Yes

TURBULENCE? NO

BLOCKAGE? NO

SURFACE BUILD-UP? No

HEAD MEASURING DEVICE MOUNTED PROPERLY? YES

BLOCKAGE IN HEAD MEASURING DEVICE? NO

IS FLOW METER PROGRAMMED CORRECTLY? YES

CALIBRATION:

**NOTE: THE ZERO POINT FOR MEASURING MUST BE LEVEL WITH THE WEIR CREST OR FLUME ZERO POINT:**

A) IF POSSIBLE, CUT-OFF FLOW & SET LEVEL TO 0.000FT

LEVEL BEFORE:

LEVEL AFTER:

B) IF FLOW CANNOT BE CUT-OFF, ADJUST LEVEL ON METER TO MEASURED POINT:

LEVEL BEFORE: Target Set 20 MGD AS Found 19.85 MGD

LEVEL AFTER: 20.02 MGD

C) Actual Flow 10.22 MGD

LEVEL FLOW CONVERSION CHECK:

WITH FLOW THRU PRIMARY DEVICE, CHECK LEVEL TO FLOW CONVERSION WITH HANDBOOK OR PRIMARY DEVICE DATA SHEET: YES/OK

TOTALIZER CHECK:

WITH FLOW GOING THRU PRIMARY DEVICE, VERIFY THAT TOTAL FLOW IS INTEGRATING PROPERLY USING TIMED RATE METHOD: YES/OK

CALIBRATED BY: BRIAN SCHEPPLER

DATE: 10/14/2025

BC SYSTEMS INC.  
2778 N. 4000 E. ROAD  
BOURBONNAIS ILLINOIS 60914  
PHONE: 1-815-671-1257  
FAX: 1-815-802-0219

**FIELD CALIBRATION SHEET**

COMPANY: KRMA

CITY: KANKAKEE/BROOKMONT

FLOW METER MODEL: ISCO Signature

INFLUENT October 10th, 2025

PRIMARY DEVICE: PHARSHAL

FLOW: 0-516 GPM 0-13.20 IN

MEASURING DEVICE: ULTRASONIC

**CHECK POINTS:**

LEVEL? YES

FREE FLOWING? YES

TURBULENCE? NO

BLOCKAGE? No

SURFACE BUILD-UP? NO

HEAD MEASURING DEVICE MOUNTED PROPERLY? Yes

BLOCKAGE IN HEAD MEASURING DEVICE? NO

IS FLOW METER PROGRAMMED CORRECTLY? Yes

**CALIBRATION:**

**NOTE: THE ZERO POINT FOR MEASURING MUST BE LEVEL WITH THE WEIR CREST OR FLUME ZERO POINT:**

A) IF POSSIBLE, CUT-OFF FLOW & SET LEVEL TO 0.000FT

LEVEL BEFORE:

LEVEL AFTER:

B) IF FLOW CANNOT BE CUT-OFF, ADJUST LEVEL ON METER TO MEASURED POINT:

LEVEL BEFORE: Target 24.063" Level 24.188"

LEVEL AFTER: 24.064"

Actual Flow 58.85 GPM 3.244"

**LEVEL FLOW CONVERSION CHECK:**

WITH FLOW THRU PRIMARY DEVICE, CHECK LEVEL TO FLOW CONVERSION WITH HANDBOOK OR PRIMARY DEVICE DATA SHEET: Yes

**TOTALIZER CHECK:**

WITH FLOW GOING THRU PRIMARY DEVICE, VERIFY THAT TOTAL FLOW IS INTEGRATING PROPERLY USING TIMED RATE METHOD: Yes

CALIBRATED BY: Brian Scheppler

DATE 10/10/2025

BC SYSTEMS INC.  
2778 N. 4000 E. ROAD  
BOURBONNAIS ILLINOIS 60914  
PHONE: 1-815-671-1257  
FAX: 1-815-802-0219

## FIELD CALIBRATION SHEET

COMPANY: KRMA

CITY: Kankakee Influent

FLOW METER MODEL: Isco Laser Flow

INFLUENT October 14<sup>th</sup>, 2025

PRIMARY DEVICE: 72" PIPE

FLOW: 0-115 MGD

MEASURING DEVICE:

### CHECK POINTS:

LEVEL? YES

FREE FLOWING? Yes

TURBULENCE? NO

BLOCKAGE? NO

SURFACE BUILD-UP? No

HEAD MEASURING DEVICE MOUNTED PROPERLY? YES

BLOCKAGE IN HEAD MEASURING DEVICE? NO

IS FLOW METER PROGRAMMED CORRECTLY? YES

### CALIBRATION:

**NOTE: THE ZERO POINT FOR MEASURING MUST BE LEVEL WITH THE WEIR CREST OR FLUME ZERO POINT:**

A) IF POSSIBLE, CUT-OFF FLOW & SET LEVEL TO 0.000FT

LEVEL BEFORE:

LEVEL AFTER:

B) IF FLOW CANNOT BE CUT-OFF, ADJUST LEVEL ON METER TO MEASURED POINT:

LEVEL BEFORE: Target level 45.5" As found 44.450"

LEVEL AFTER: 44.450"

C) Actual level 24.283" 8.59 MGD

### LEVEL FLOW CONVERSION CHECK:

WITH FLOW THRU PRIMARY DEVICE, CHECK LEVEL TO FLOW CONVERSION WITH HANDBOOK OR PRIMARY DEVICE DATA SHEET: YES/OK

### TOTALIZER CHECK:

WITH FLOW GOING THRU PRIMARY DEVICE, VERIFY THAT TOTAL FLOW IS INTEGRATING PROPERLY USING TIMED RATE METHOD: YES/OK

CALIBRATED BY: BRIAN SCHEPPLER

DATE: 10/14/2025

BC SYSTEMS INC.  
2778 N. 4000 E. ROAD  
BOURBONNAIS ILLINOIS 60914  
PHONE: 1-815-671-1257  
FAX: 1-815-802-0219

## FIELD CALIBRATION SHEET

COMPANY: KRMA

CITY: KANKAKEE

FLOW METER MODEL: Siemens Hydro Ranger #1

Influent October 14<sup>th</sup> ,2025

PRIMARY DEVICE: Flume

FLOW: 0-73 MGD

MEASURING DEVICE: Ultrasonic

### CHECK POINTS:

LEVEL? YES

FREE FLOWING? Yes

TURBULENCE? No

BLOCKAGE? NO

SURFACE BUILD-UP? No

HEAD MEASURING DEVICE MOUNTED PROPERLY? YES

BLOCKAGE IN HEAD MEASURING DEVICE? NO

IS FLOW METER PROGRAMMED CORRECTLY? YES

### CALIBRATION:

**NOTE: THE ZERO POINT FOR MEASURING MUST BE LEVEL WITH THE WEIR CREST OR FLUME ZERO POINT:**

A) IF POSSIBLE, CUT-OFF FLOW & SET LEVEL TO 0.000FT  
LEVEL BEFORE:

LEVEL AFTER:

B) IF FLOW CANNOT BE CUT-OFF, ADJUST LEVEL ON METER TO MEASURED  
POINT:

LEVEL BEFORE: Target Set 20 MGD AS Found 20.80 MGD

LEVEL AFTER: 20.02 MGD

C) Actual Flow 10.22 MGD

### LEVEL FLOW CONVERSION CHECK:

WITH FLOW THRU PRIMARY DEVICE, CHECK LEVEL TO FLOW CONVERSION WITH HANDBOOK OR PRIMARY DEVICE DATA SHEET: YES/OK

### TOTALIZER CHECK:

WITH FLOW GOING THRU PRIMARY DEVICE, VERIFY THAT TOTAL FLOW IS INTEGRATING PROPERLY USING TIMED RATE METHOD: YES/OK

CALIBRATED BY: BRIAN SCHEPPLER

DATE: 10/14/2025

BC SYSTEMS INC.  
2778 N. 4000 E. ROAD  
BOURBONNAIS ILLINOIS 60914  
PHONE: 1-815-671-1257  
FAX: 1-815-802-0219

## FIELD CALIBRATION SHEET

COMPANY: KRMA

CITY: BRADLEY/ RIVER DRIVE

FLOW METER MODEL: Isco Signature

Date: October 10th, 2025

PRIMARY DEVICE: PHARSHAL

FLOW: 0-21.36

MEASURING DEVICE: ULTRASONIC

**CHECK POINTS:**

LEVEL? YES

FREE FLOWING? Yes

TURBULENCE? Yes

BLOCKAGE? NO

SURFACE BUILD-UP? NONE

HEAD MEASURING DEVICE MOUNTED PROPERLY? Yes

BLOCKAGE IN HEAD MEASURING DEVICE? NO

IS FLOW METER PROGRAMMED CORRECTLY? YES

**CALIBRATION:**

**NOTE: THE ZERO POINT FOR MEASURING MUST BE LEVEL WITH THE WEIR CREST OR FLUME ZERO POINT:**

A) IF POSSIBLE, CUT-OFF FLOW & SET LEVEL TO 0.000FT

LEVEL BEFORE:

LEVEL AFTER:

B) IF FLOW CANNOT BE CUT-OFF, ADJUST LEVEL ON METER TO MEASURED POINT:

LEVEL BEFORE: Target 6.0" Level reading 6.193"

LEVEL AFTER: 6.007"

C) Actual Flow 0.98 MGD 4.114"

**LEVEL FLOW CONVERSION CHECK:**

WITH FLOW THRU PRIMARY DEVICE, CHECK LEVEL TO FLOW CONVERSION WITH HANDBOOK OR PRIMARY DEVICE DATA SHEET: YES/OK

**TOTALIZER CHECK:**

WITH FLOW GOING THRU PRIMARY DEVICE, VERIFY THAT TOTAL FLOW IS INTEGRATING PROPERLY USING TIMED RATE METHOD: YES/OK

CALIBRATED BY: BRIAN SCHEPPLER

DATE: 10/10/2025

BC SYSTEMS INC.  
2778 N. 4000 E. ROAD  
BOURBONNAIS ILLINOIS 60914  
PHONE: 1-815-671-1257  
FAX: 1-815-802-0219

## FIELD CALIBRATION SHEET

COMPANY: KRMA

CITY: KANKAKEE/RIVERLANE

FLOW METER MODEL: Isco Signature

INFLUENT October 10th, 2025

PRIMARY DEVICE: PHARSHAL

FLOW: 0-516 GPM 0-13.20 IN

MEASURING DEVICE: ULTRASONIC

### CHECK POINTS:

LEVEL? YES

FREE FLOWING?

TURBULENCE? NO

BLOCKAGE? No

SURFACE BUILD-UP? No

HEAD MEASURING DEVICE MOUNTED PROPERLY? Yes

BLOCKAGE IN HEAD MEASURING DEVICE? NO

IS FLOW METER PROGRAMMED CORRECTLY? Yes

### CALIBRATION:

**NOTE: THE ZERO POINT FOR MEASURING MUST BE LEVEL WITH THE WEIR CREST OR FLUME ZERO POINT:**

A) IF POSSIBLE, CUT-OFF FLOW & SET LEVEL TO 0.000FT

LEVEL BEFORE:

LEVEL AFTER:

B) IF FLOW CANNOT BE CUT-OFF, ADJUST LEVEL ON METER TO MEASURED POINT

C) LEVEL BEFORE: TARGET SET 24.063" Level 24.243"

LEVEL AFTER: 24.062"

D) Actual Flow 1.614" 20.52 GPM

### LEVEL FLOW CONVERSION CHECK:

WITH FLOW THRU PRIMARY DEVICE, CHECK LEVEL TO FLOW CONVERSION WITH HANDBOOK OR PRIMARY DEVICE DATA SHEET: Yes

### TOTALIZER CHECK:

WITH FLOW GOING THRU PRIMARY DEVICE, VERIFY THAT TOTAL FLOW IS INTEGRATING PROPERLY USING TIMED RATE METHOD: Yes

CALIBRATED BY: Brian Scheppler

DATE: 10/10/2025

BC SYSTEMS INC.  
2778 N. 4000 E. ROAD  
BOURBONNAIS ILLINOIS 60914  
PHONE: 1-815-671-1257  
FAX: 1-815-802-0219

**ATTACHMENT**

**E**

September 2025 Monthly Pretreatment Sample Analysis (metals, cyanide & VOA) for the permitted industries were a total of **60 samples** and a total of **377 analyses**.

Hoffman Transportation, LLC	5 Samples
Laraway Recycling & Disposal Facility	11 Samples
Liberty Landfill, LLC	11 Samples
Livingston Landfill	8 Samples
Momence Packing	1 Sample
Natural Gas & Pipeline Co. of America	1 Sample
Prairie View RDF	9 Samples
Tank Cleaning Solutions, LLC	14 Samples

Volumes Received for September 2025 for trucked-in industries.

Hoffman Transportation, LLC	125,000 gals	25 loads
Laraway Recycling & Disposal Facility	810,043 gals	128 loads
Liberty Landfill, LLC	947,742 gals	141 loads
Livingston Landfill	183,094 gals	27 loads
Momence Packing	6,000 gals	2 loads
Natural Gas & Pipeline Co. of America	5,000 gals	1 load
Prairie View RDF	405,347 gals	70 loads
Tank Cleaning Solutions, LLC	172,821 gals	33 loads

---

**Totals: 2,655,047 gals      427 loads**

The KRMA Facility received a total of **226 loads** of septage which totalled **577,650 gallons** for the month of September 2025

**KRMA YEARLY UTILITY USAGE - (2025)**

	KRMA ELECTRIC ENERGY USE									KRMA WATER USE				
	Total KWH	Days	Total Cost \$/month	Total Cost \$/day	Hydro KWH	Methane KWH	Champion Energy KWH	KWH/HR (Avg)	\$/KWH	Gallons	Days	Total Cost \$/Billing Period	Gallons/Day	Total Cost \$/day
<b>JANUARY</b>	804,901	31	\$ 84,993	\$ 2,742	-	-	804,901	1,082	\$ 0.1056	278,400	32	\$ 2,910	8,700	91
<b>FEBRUARY</b>	876,795	32	\$ 55,829	\$ 1,745	-	-	876,795	1,142	\$ 0.0637	274,200	29	\$ 2,878	9,455	99
<b>MARCH</b>	793,458	61	\$ 50,811	\$ 833	-	-	793,458	542	\$ 0.0640	299,500	28	\$ 3,305	10,696	118
<b>APRIL</b>	758,809	30	\$ 48,382	\$ 1,613	-	-	758,809	1,054	\$ 0.0638	275,400	30	\$ 3,104	9,180	103
<b>MAY</b>	774,191	32	\$ 65,112	\$ 2,035	-	-	774,191	1,008	\$ 0.0841	291,000	32	\$ 3,234	9,094	101
<b>JUNE</b>	692,794	29	\$ 66,278	\$ 2,285	-	-	692,794	995	\$ 0.0957	265,200	29	\$ 3,019	9,145	104
<b>JULY</b>	707,157	30	\$ 69,394	\$ 2,313	-	-	707,157	982	\$ 0.0981	286,800	33	\$ 3,199	8,691	97
<b>AUGUST</b>	841,868	34	\$ 74,791	\$ 2,200	-	-	841,868	1,032	\$ 0.0888	246,100	30	\$ 2,860	8,203	95
<b>SEPTEMBER</b>	24,513	30	\$ 26,908	\$ 897	-	-	24,513	34	\$ 1.0977	395,600	30	\$ 4,109	13,187	137
<b>OCTOBER</b>	0			#DIV/0!	-	-		#DIV/0!	#DIV/0!				#DIV/0!	#DIV/0!
<b>NOVEMBER</b>	0			#DIV/0!	-	-		#DIV/0!	#DIV/0!				#DIV/0!	#DIV/0!
<b>DECEMBER</b>	0			#DIV/0!	-	-		#DIV/0!	#DIV/0!				#DIV/0!	#DIV/0!
<b>TOTAL</b>	6,274,487	309	\$ 542,498	#DIV/0!	0	0	6,274,487	#DIV/0!	#DIV/0!	2,612,200	273	\$ 28,618	#DIV/0!	#DIV/0!
	Total KWH	Days	Total Cost \$/month	Total Cost \$/day	Hydro KWH	Methane KWH	Mid-American KWH	KWH/HR (Avg)	\$/KWH	Gallons	Days	Total Cost \$/Billing Period	Gallons/Day	Total Cost \$/day

KRMA NATURAL GAS USE					
	Therms	Days	Total Cost \$/Billing Period	Therms/Day	Total Cost \$/day
<b>JANUARY</b>	42,707	30	\$ 29,294	1424	\$ 976
<b>FEBRUARY</b>	51,486	33	\$ 34,880	1560	\$ 1,057
<b>MARCH</b>	43,630	35	\$ 29,584	1247	\$ 845
<b>APRIL</b>	25,925	27	\$ 18,102	960	\$ 670
<b>MAY</b>	16,560	29	\$ 29,851	571	\$ 1,029
<b>JUNE</b>	13,213	30	\$ 9,387	440	\$ 313
<b>JULY</b>	10,038	32	\$ 7,273	314	\$ 227
<b>AUGUST</b>	8,365	29	\$ 6,123	288	\$ 211
<b>SEPTEMBER</b>	9,282	30	\$ 2,344	309	\$ 78
<b>OCTOBER</b>				#DIV/0!	#DIV/0!
<b>NOVEMBER</b>				#DIV/0!	#DIV/0!
<b>DECEMBER</b>				#DIV/0!	#DIV/0!
<b>TOTAL</b>	221,205	275	\$ 166,838	#DIV/0!	#DIV/0!
	Therms	Days	Total Cost \$/Billing Period	Therms/Day	Total Cost \$/day



## Annual Load / Gallon Totals

2025

**IV-B-2**  
**1600 West Brookmont Blvd.**  
**Kankakee, IL 60901**  
 Phone: 815-933-0444  
 Fax: 815-933-0104

Month Received	Gilster-Mary Lee Corporation	Hoffman Transportation, LLC	Kankakee Recycling & Disposal Facility	KGN Farm Inc.	Lake County C&D Landfill	Laraway Recycling & Disposal Facility	Liberty Landfill, LLC	Livingston Landfill	Momence Packing	Natural Gas & Pipeline Co. of America	Newton County Landfill	Peoria Packing Co.	Prairie View - Will County RNG Plant	Prairie View RDF	Tank Cleaning Solutions, LLC	Verdant Specialty Solutions US LLC	Total	# Leads
January	144,300	165,000				113,068	615,582	100,450		45,000				206,169	193,769		1,583,338	277
February	42,000	155,000				786,060	299,096	114,093		20,000				113,862	193,769		1,723,880	294
March		160,000				801,941		113,262		100,000		17,500		313,567	230,428		1,736,698	302
April		160,000				913,762	258,303	153,379		70,000		10,000		290,001	225,188		2,080,633	351
May		155,000				937,134	66,002	143,610		40,000				325,468	209,486		1,876,700	319
June		155,000				932,765	357,166	158,627		50,000				506,013	157,110		2,316,881	391
July		145,000				683,944	278,108	161,178		55,000		2		503,765	199,006		2,026,003	346
August		150,000				906,997	658,979	207,970		50,000				402,309	188,532		2,554,787	425
September		125,000				810,043	947,742	183,094	6,000	5,000				405,347	172,821		2,655,847	433
October																		
November																		
December																		
<b>Totals</b>	<b>186,300</b>	<b>1,370,000</b>				<b>6,885,714</b>	<b>3,460,978</b>	<b>1,335,663</b>	<b>6,000</b>	<b>435,000</b>		<b>27,502</b>		<b>3,066,601</b>	<b>1,770,109</b>		<b>18,563,767</b>	<b>3,212</b>
Average	93,150	152,222				765,079	435,122	148,407	6,000	48,333		9,167		340,722	196,679		2,062,641	349

**Monthly TSS/BOD  
Loading Report**  
September, 2025

Hauler	Gallons	Lbs TSS	Lbs BOD	NH <sub>3</sub>
Hoffman Transportation, LLC	125,000	3,526	1,756	
Laraway Recycling & Disposal Facility	810,043	252	5,135	
Liberty Landfill, LLC	947,742	2,028	31,637	23,311
Livingston Landfill	183,094	534	7,912	3,548
Natural Gas & Pipeline Co. of America	5,000	3	84	
Prairie View RDF	405,347	1,636	12,685	7,259
Tank Cleaning Solutions, LLC	172,821	611	6,250	
<b>Totals: 2,655,047</b>		<b>8,590</b>	<b>65,458</b>	

# KRMA Flows Report

	Kankakee Flows				Bradley Flows				Bourbonnais Flows				Aroma Park Flows				TOTALS	TOTALS
	YTD Actual Flows	Actual Flows	% of Total	Estimated %	YTD Actual Flows	Actual Flows	% of Total	Estimated %	YTD Actual Flows	Actual Flows	% of Total	Estimated %	YTD Actual Flows	Actual Flows	% of Total	Estimated %		
5/31/2022	327,190	327,190	63.29%	65.55%	59,684	59,684	11.54%	10.86%	128,467	128,467	24.85%	23.29%	1,632	1,632	0.32%	0.30%	516,973	1,000
6/30/2022	589,310	262,120	67.13%	65.55%	36,566	36,566	9.36%	10.86%	219,204	90,737	23.24%	23.29%	2,679	1,047	0.27%	0.30%	390,470	1,000
7/31/2022	845,820	256,510	69.25%	65.55%	32,633	32,633	8.81%	10.86%	299,364	80,160	21.64%	23.29%	3,762	1,083	0.29%	0.30%	370,386	1,000
8/31/2022	1073,610	227,790	68.05%	65.55%	27,078	27,078	8.09%	10.86%	378,170	78,806	23.54%	23.29%	4,851	1,089	0.33%	0.30%	334,763	1,000
9/30/2022	1270,980	197,370	66.81%	65.55%	24,400	24,400	8.26%	10.86%	450,785	72,615	24.58%	23.29%	5,873	1,022	0.35%	0.30%	295,407	1,000
10/31/2022	1478,340	207,360	65.54%	65.55%	29,974	29,974	9.47%	10.86%	528,911	78,126	24.69%	23.29%	6,822	0,949	0.30%	0.30%	316,409	1,000
11/30/2022	1675,230	196,890	63.27%	65.55%	30,268	30,268	9.73%	10.86%	612,054	83,143	26.72%	23.29%	7,721	0,899	0.29%	0.30%	311,200	1,000
12/31/2022	1914,460	239,230	64.26%	65.55%	40,083	40,083	10.77%	10.86%	703,971	91,917	24.69%	23.29%	8,747	1,026	0.28%	0.30%	372,256	1,000
1/31/2023	2164,510	250,050	64.07%	65.55%	42,295	42,295	10.84%	10.86%	800,838	96,867	24.82%	23.29%	9,790	1,043	0.27%	0.30%	390,255	1,000
2/28/2023	2416,300	251,790	59.61%	65.55%	51,947	51,947	12.30%	10.86%	918,223	117,385	27.79%	23.29%	11,052	1,262	0.30%	0.30%	422,384	1,000
3/31/2023	2808,030	391,730	60.21%	65.55%	89,485	89,485	13.75%	10.86%	1085,322	167,099	25.68%	23.29%	13,329	2,277	0.35%	0.30%	650,591	1,000
4/30/2023	3098,910	290,880	64.32%	65.55%	54,510	54,510	12.05%	10.86%	1190,584	105,262	23.27%	23.29%	14,944	1,615	0.36%	0.30%	452,267	1,000
	3,098,910		64.248%		518,923		10.759%		1,190,584		24.684%		14,944		0.310%		4,823,361	12,000
	Kankakee Flows				Bradley Flows				Bourbonnais Flows				Aroma Park Flows				TOTALS	TOTALS
	YTD Actual Flows	Actual Flows	% of Total	Estimated %	YTD Actual Flows	Actual Flows	% of Total	Estimated %	YTD Actual Flows	Actual Flows	% of Total	Estimated %	YTD Actual Flows	Actual Flows	% of Total	Estimated %		
5/31/2023	241,200	241,200	63.06%	64.25%	42,940	42,940	11.23%	10.76%	97,296	97,296	25.44%	24.68%	1,078	1,078	0.28%	0.31%	382,514	1,000
6/30/2023	429,120	187,920	66.42%	64.25%	70,540	27,600	9.78%	10.76%	163,796	66,500	23.50%	24.68%	1,988	0,910	0.32%	0.31%	282,930	1,000
7/31/2023	634,720	205,600	61.28%	64.25%	106,270	35,730	10.65%	10.76%	257,056	93,260	27.80%	24.68%	2,908	0,920	0.27%	0.31%	335,510	1,000
8/31/2023	859,940	225,220	65.28%	64.25%	142,440	36,170	10.49%	10.76%	339,716	82,660	23.96%	24.68%	3,878	0,970	0.28%	0.31%	345,020	1,000
9/30/2023	1062,280	202,340	64.02%	64.25%	175,250	32,810	10.38%	10.76%	419,646	79,930	25.29%	24.68%	4,858	0,980	0.31%	0.31%	316,060	1,000
10/31/2023	1280,950	218,670	55.75%	64.25%	227,610	52,360	13.35%	10.76%	539,686	120,040	30.60%	24.68%	6,028	1,170	0.30%	0.31%	392,240	1,000
11/30/2023	1487,430	206,480	61.78%	64.25%	263,270	35,660	10.67%	10.76%	630,826	91,140	27.27%	24.68%	6,988	0,960	0.29%	0.31%	334,240	1,000
12/31/2023	1754,640	267,210	58.46%	64.25%	316,030	52,760	11.54%	10.76%	766,606	135,780	29.71%	24.68%	8,288	1,300	0.28%	0.31%	457,050	1,000
1/31/2024	2206,160	451,520	62.71%	64.25%	404,390	88,360	12.27%	10.76%	944,376	177,770	24.69%	24.68%	10,658	2,370	0.33%	0.31%	720,020	1,000
2/29/2024	2511,780	305,620	66.81%	64.25%	452,650	48,260	10.55%	10.76%	1046,446	102,070	22.31%	24.68%	12,158	1,500	0.33%	0.31%	457,450	1,000
3/31/2024	2811,640	299,860	63.99%	64.25%	501,700	49,050	10.47%	10.76%	1164,536	118,090	25.20%	24.68%	13,788	1,630	0.35%	0.31%	468,630	1,000
4/30/2024	3244,620	432,980	61.92%	64.25%	588,130	86,430	12.36%	10.76%	1342,126	177,590	25.40%	24.68%	16,018	2,230	0.32%	0.31%	699,230	1,000
	3,244,620		62.506%		588,130		11.330%		1,342,126		25.655%		16,018		0.309%		5,190,894	12,000
	Kankakee Flows				Bradley Flows				Bourbonnais Flows				Aroma Park Flows				TOTALS	TOTALS
	YTD Actual Flows	Actual Flows	% of Total	Estimated %	YTD Actual Flows	Actual Flows	% of Total	Estimated %	YTD Actual Flows	Actual Flows	% of Total	Estimated %	YTD Actual Flows	Actual Flows	% of Total	Estimated %		
5/31/2024	340,380	340,380	63.54%	62.51%	59,540	59,540	11.11%	11.33%	134,020	134,020	25.02%	25.86%	1,760	1,760	0.33%	0.31%	535,700	1,000
6/30/2024	593,420	253,040	68.19%	62.51%	90,610	31,070	8.37%	11.33%	219,990	85,970	23.17%	25.86%	2,780	1,020	0.27%	0.31%	371,100	1,000
7/31/2024	948,880	355,460	72.70%	62.51%	126,400	35,790	7.32%	11.33%	316,590	96,600	19.76%	25.86%	3,862	1,082	0.22%	0.31%	488,932	1,000
8/31/2024	1168,070	219,190	64.90%	62.51%	153,690	27,290	8.08%	11.33%	406,940	90,350	26.75%	25.86%	4,758	0,896	0.27%	0.31%	337,726	1,000
9/30/2024	1353,390	185,320	63.54%	62.51%	177,850	24,160	8.28%	11.33%	488,260	81,320	27.88%	25.86%	5,632	0,874	0.30%	0.31%	291,674	1,000
10/31/2024	1532,250	178,860	65.85%	62.51%	210,100	32,250	11.87%	11.33%	547,950	59,690	21.97%	25.86%	6,462	0,830	0.31%	0.31%	271,630	1,000
11/30/2024	1750,120	217,870	63.99%	62.51%	249,180	39,080	11.48%	11.33%	630,680	82,730	24.30%	25.86%	7,274	0,812	0.24%	0.31%	340,492	1,000
12/31/2024	1953,870	203,750	59.21%	62.51%	294,600	45,420	13.20%	11.33%	724,720	94,040	27.33%	25.86%	8,194	0,920	0.27%	0.31%	344,130	1,000
1/31/2025	2174,640	220,770	60.07%	62.51%	341,970	47,370	12.89%	11.33%	823,060	98,340	26.76%	25.86%	9,254	1,060	0.29%	0.31%	367,540	1,000
2/28/2025	2405,930	231,290	68.44%	62.51%	379,050	37,080	10.97%	11.33%	891,820	68,760	20.35%	25.86%	10,054	0,800	0.24%	0.31%	337,930	1,000
3/31/2025	2795,380	389,450	63.65%	62.51%	450,500	71,450	11.68%	11.33%	1040,980	149,160	24.38%	25.86%	11,894	1,840	0.30%	0.31%	611,900	1,000
4/30/2025	3124,280	328,900	64.07%	62.51%	512,230	61,730	12.02%	11.33%	1161,980	121,000	23.57%	25.86%	13,624	1,730	0.34%	0.31%	513,360	1,000
	3,124,280		64.925%		512,230		10.645%		1,161,980		24.147%		13,624		0.283%		4,812,114	12,000
	Kankakee Flows				Bradley Flows				Bourbonnais Flows				Aroma Park Flows				TOTALS	TOTALS
	YTD Actual Flows	Actual Flows	% of Total	Estimated %	YTD Actual Flows	Actual Flows	% of Total	Estimated %	YTD Actual Flows	Actual Flows	% of Total	Estimated %	YTD Actual Flows	Actual Flows	% of Total	Estimated %		
5/31/2025	262,860	262,860	66.40%	64.93%	41,500	41,500	10.48%	10.64%	90,500	90,500	22.86%	24.15%	1,010	1,010	0.26%	0.28%	395,870	1,000
6/30/2025	534,110	271,250	65.56%	64.93%	42,490	42,490	10.27%	10.64%	98,840	98,840	23.89%	24.15%	1,160	1,160	0.28%	0.28%	413,740	1,000
7/31/2025	780,820	246,710	67.14%	64.93%	33,360	33,360	9.08%	10.64%	86,420	86,420	23.52%	24.15%	0,970	0,970	0.26%	0.28%	367,460	1,000
8/31/2025	1026,360	245,540	65.97%	64.93%	36,870	36,870	9.81%	10.64%	88,760	88,760	23.85%	24.15%	1,030	1,030	0.28%	0.28%	372,200	1,000
9/30/2025	1203,040	176,680	62.71%	64.93%	63,350	26,480	9.40%	10.64%	166,510	77,750	27.60%	24.15%	1,850	0,820	0.29%	0.28%	281,730	1,000
10/31/2025	1203,040		0.00%	64.93%	63,350		0.00%	10.64%	166,510		0.00%	24.15%	1,850		0.00%	0.28%	0,000	0,000
11/30/2025	1203,040		0.00%	64.93%	63,350		0.00%	10.64%	166,510		0.00%	24.15%	1,850		0.00%	0.28%	0,000	0,000
12/31/2025	1203,040		0.00%	64.93%	63,350		0.00%	10.64%	166,510		0.00%	24.15%	1,850		0.00%	0.28%	0,000	0,000
1/31/2026	1203,040		0.00%	64.93%	63,350		0.00%	10.64%	166,510		0.00%	24.15%	1,850		0.00%	0.28%	0,000	0,000
2/28/2026	1203,040		0.00%	64.93%	63,350		0.00%	10.64%	166,510		0.00%	24.15%	1,850		0.00%	0.28%	0,000	0,000
3/31/2026	1203,040		0.00%	64.93%	63,350		0.00%	10.64%	166,510		0.00%	24.15%	1,850		0.00%	0.28%	0,000	0,000
4/30/2026	1203,040		0.00%	64.93%	63,350		0.00%	10.64%	166,510		0.00%	24.15%	1,850		0.00%	0.28%	0,000	0,000
	1,203,040		65.704%		180,700		9.869%		442,270		24.155%		4,990		0.273%		1,831,000	5,000

Flows  
 KRMA Treatment Facility  
 September, 2025

Date	PRECIPITA INCHES	PLANT MGD	Kankakee MGD	BOURB. MGD	BradleyFlow MGD	AromaPark MGD
9/1/2025	.00	9.54	5.89	2.43	1.19	.03
9/2/2025	.00	9.65	6.34	2.43	.85	.03
9/3/2025	.00	10.59	7.16	2.38	1.03	.03
9/4/2025	.00	10.59	6.51	2.97	1.09	.03
9/5/2025	.50	10.56	6.64	2.97	.93	.03
9/6/2025	.00	9.97	6.11	2.76	1.07	.03
9/7/2025	.00	9.51	5.69	2.66	1.13	.03
9/8/2025	.00	9.50	5.90	2.66	.92	.03
9/9/2025	.00	9.50	6.01	2.57	.90	.03
9/10/2025	.00	9.33	4.60	3.88	.82	.02
9/11/2025	.00	9.33	6.04	2.44	.82	.03
9/12/2025	.00	9.00	5.79	2.40	.78	.03
9/13/2025	.00	8.99	5.72	2.42	.82	.03
9/14/2025	.00	8.70	5.30	2.54	.83	.03
9/15/2025	.10	9.09	5.72	2.54	.80	.03
9/16/2025	.00	9.09	5.84	2.40	.82	.02
9/17/2025	.00	8.70	5.44	2.37	.87	.03
9/18/2025	.00	8.73	5.54	2.36	.80	.02
9/19/2025	.00	8.90	5.65	2.41	.81	.03
9/20/2025	.28	9.65	6.13	2.58	.91	.03
9/21/2025	.00	9.65	6.15	2.57	.90	.03
9/22/2025	.12	9.53	5.70	2.99	.82	.03
9/23/2025	.00	9.76	6.18	2.74	.80	.03
9/24/2025	.11	9.76	6.24	2.67	.82	.03
9/25/2025	.00	9.41	6.07	2.50	.81	.03
9/26/2025	.00	9.38	6.14	2.45	.76	.03
9/27/2025	.00	9.05	5.66	2.43	.93	.03
9/28/2025	.00	8.68	5.43	2.36	.86	.03
9/29/2025	.00	8.80	5.52	2.49	.77	.03
9/30/2025	.00	8.80	5.57	2.39	.82	.03
Total	1.11	281.73	176.68	77.75	26.48	.82
Average	.04	9.39	5.89	2.59	.88	.03
Minimum	.00	8.68	4.60	2.36	.76	.02
Maximum	.50	10.59	7.16	3.88	1.19	.03
# of data	30.00	30.00	30.00	30.00	30.00	30.00

---

**KRMA Agenda Meetings @ 10am for 2026**

Thursday, January 8, 2026  
Thursday, February 12, 2026  
Thursday, March 12, 2026  
Thursday, April 09, 2026  
Thursday, May 14, 2026  
Thursday, June 11, 2026  
Thursday, July 09, 2026  
Thursday, August 13, 2026  
Thursday, September 10, 2026  
Thursday, October 8, 2026  
Thursday, November 5, 2026  
Thursday, December 3, 2026

**KRMA Board of Directors Meetings @ 9am for 2026**

Thursday, January 22, 2026  
Thursday, February 26, 2026  
Thursday, March 26, 2026  
Thursday, April 23, 2026  
Thursday, May 28, 2026  
Thursday, June 25, 2026  
Thursday, July 23, 2026  
Thursday, August 27, 2026  
Thursday, September 24, 2026  
Thursday, October 22, 2026  
Thursday, November 19, 2026  
Thursday, December 17, 2026

**BID SUMMARY REPORT  
FOR  
REPLACEMENT OF AC UNIT WITH CHILLER**

	<b>HINRICH INC</b>	<b>GLADE PLUMBING &amp; PIPING CO</b>	<b>HOLOHAN HEATING &amp; SHEETMETAL, INC</b>
TOTAL COST	<b>\$68,335.36</b>	<b>\$119,900.00</b>	<b>\$104,575.00</b>
INSTALLATION INCLUDES:	REMOVAL OF OLD EQUIPMENT	RECOVER AND RECYCLE EXISTING REFRIGERANT	REMOVAL AND DISPOSAL OF OLD UNIT
	ALL THE NEW PARTS: R454b AL2 REFRIGERANT, 20 TON 460-3-60, THREE - STATE COLLING, WITH A DUAL CIRCUIT. INDOOR COIL COMES WITH THE RDS TO MEET THE NEW AL2 SAFEY REQUIREMENTS CARRIER MODEL: 39MN12W02F1FV11XGE CARRIER MODEL: 38AXDT25A0A6-OAOAO	REMOVE AND DISCARD EXISTING CARRIER CONDENSING UNIT, LINESET, AND EVAPORATOR COIL	SETTING OF NEW CHILLER AND COIL
	MATERIALS	SET NEW CARRIER AIR COLED CHILLER AND CHILLED WATER STORAGE TANK ON EXISTING PAD	PIPING OF NEW CHILLER LINES TO INDOOR COIL,
	SHIPPING	INSTALL NEW CHILLED WATER COIL IN PLACE OF EXISTING DX COOLING COIL	CONTROLS
	TAXES	PIPE AND INSULATE NEW CHILLED WATER LINES INTO CHILLED WATER COIL AND VALVE	LEAK CHECK
	LABOR TO COMPLETE THE JOB	CONTROL CONTRACTOR WILL PROGRAM BACNET CONTROL TO CHILLER AND OUTPUT TO CHILLED WATER VALVE	OPERATIONAL START-UP
		START UP AND CHECK OPERATION	
EXCLUSIONS:		PREMIUM TIME LABOR	OVERTIME COST
		PERMITS OR FEES	PERMIT COST
TERMS:	1/2 DOWN, BALANCE UPON COMPLETION	QUOTE VALID UNTIL 10/26/2025	STANDARD WARRANTY COVERAGE IS 90 DAYS LABOR & 1 YEAR PARTS
	5 WEEKS LEAD TIME		QUOTE VALID UNTIL 11/12/25
	INSTALLATION CAN BE DONE AT TIME OF DELIVERY		
	QUOTE VALID UNTIL 10/26/2025		



INTERNATIONAL UNION OF OPERATING ENGINEERS • AFL-CIO

# LOCAL 399

October 13, 2025

Mr. David Tyson  
Executive Director  
Kankakee River Metropolitan Agency  
1600 W. Brookmont Blvd.  
Kankakee, IL 60901

Re: 2025-2026 Health & Welfare Increase – Effective December 1, 2025.  
Kankakee River Metropolitan Agency

Dear Mr. Tyson:

Pursuant to the terms in our Agreement, the table below outlines the increase rates for the 2025-2026 contract year. All increases are effective December 1, 2025.

<u>BENEFIT</u>	<u>CURRENT RATE</u>	<u>INCREASE 12/1/25</u>	<u>NEW RATE</u>
Health & Welfare	\$1,369.00/mo.	\$0.40/hr.	\$1,438.66/mo.

Please call the office should you have any questions or comments.

Sincerely,

Patrick J. Kelly  
President & Business Manager

PJK/rs

CC: Pat O' Gorman