

AGENDA

KANKAKEE RIVER METROPOLITAN AGENCY MEETING

Thursday, February 24, 2022

9:00 AM in KRMA Board Room

1600 Brookmont Blvd., Kankakee, IL 60901

I. Roll Call

II. Public Comment

III. Approval of Board Minutes

A. January 20, 2022 – Regular Board Meeting

IV. Reports

A. Operations & Maintenance Report

1. Monthly Report (MOR)

B. Executive Director Report

1. Water, Gas & Electric Use/Cost

2. Hauled in Waste Summary

3. Operations Report

C. Financial Report

1. Reports

2. Hauled in Waste Report

3. Flows Graphs

D. Communications

V. Old Business

A. CSL Update

B. NARP Update

C. Bradley Property Update

D. Each Municipal to discuss on CMOM Status

E. Discussion for Hiring a Lobbyist

VI. New Business

A. Republic Services Contract

B. Update on Fiscal Year Budget - (May 1, 2022-April 30, 2023)

VII. Executive Session

A. Personnel & Probable or Imminent Litigation

VIII. Next Meeting

Thursday, March 24, 2022 (9:00 AM in KRMA Boardroom)

KANKAKEE RIVER METROPOLITAN AGENCY
MINUTES
January 20, 2022 – 9:00 A.M
1600 W Brookmont Blvd.

In attendance:

Board of Directors:

Mayor Christopher Curtis, City of Kankakee
Mayor Paul Schore, Village of Bourbonnais
Mayor Brian Stump, Village of Aroma Park
Financial Director Robert Romo, Village of Bradley
Alderman Danita Swanson, City of Kankakee
Alderman Larry Osenga, City of Kankakee
Steven Hunter, Representative, City of Kankakee

Administration:

Dave Tyson, KRMA Executive Director
Karen Benson, Smith, Koelling, Dykstra & Ohm, P.C

Attorney:

Neal Smith, Robbins Schwartz

KRMA Staff:

Arthur Strother, Superintendent
Dustin Scheppler, Asst. Superintendent, Operations
Melanie Gossett, Asst. Superintendent, Technical Services

Other:

Dan Small, Strand Associates
Terry Memenga, Alternate, Village of Bradley
Tara Latz, Alternate, Village of Bourbonnais

Chairman, Mayor Curtis called the meeting to order

I. **Roll Call**

Roll Call was taken. All Board members were present.

II. **Public Comment**

Chairman Curtis stated on behalf of KRMA and the surrounding municipalities, our prayers are with the Village of Bradley and whatever we can do, to assist, let us know. Vice Chairman Schore shared information about the Village of Bradley Fundraiser, Sunday, January 23, 2022, from 2pm – 6pm at the KVPD Rec Center.

III. **Approval of Board Minutes December 16, 2021 – Regular Board Meeting**

Motion to approve the December 16, 2021, Regular Board Meeting minutes was made by: Dir. Hunter and seconded by Dir Osenga. All board members voted in favor of. Motion Carried.

IV. **Reports**

A. **Operations & Maintenance Report**

Monthly Report

Art presented the MOR. Art reported that we are in an annual trend where loadings fluctuate based on industries beginning full production again. He also stated in December 2021 KRMA was below our BOD loadings. He stated you may see an increase in January 2022. Chairman Curtis asked, is level lower than past loadings? Art replied, the levels are about the same.

B. **Executive Director Report**

1. **Water, Gas & Electric Use/Cost**

Exec. Dir. Dave Tyson presented the yearly utility usage. Utilities are running on track for December.

2. **Hauled In Waste Summary**

Exec. Dir. Tyson stated hauled in waste finished the year strong.

3. **Operations Report**

Exec Dir Dave Tyson stated the plant is running smoothly.

C. **Financial Report**

1. **Reports**

Karen Benson presented the financial statements, stating the Statement of Net Position is showing strong. Karen informed the Board under Long-term Liabilities form it has been adjusted for governmental financials audit purposes. Statement of Revenue/Expense shows hauled in waste strong this month. Change in net position is driven from the revenue of hauled in waste. Chairman Curtis asked is the number strong due to the retro pay from hauled in waste? Karen stated she would have to look into it to make sure.

2. **Hauled In Waste Report**

None

3. **Flows Graphs**

Karen Benson presented the year-to-date flow graphs. Karen gave a breakdown on each municipality budgeted flows via actual flows for the year: Kankakee's estimated flow is at 63.38% via actual flow at 66%, Bradley's estimated flow is at 12.36% via actual flow at 10.4%, Bourbonnais estimated flow is at 23.92% via actual flow at 22.8%, and Aroma Park estimated flow is at .34% via actual flow at .294%. These actual flows reflect how adjustments will made at the end of the year.

D. **Communications**

None

V. **Old Business**

A. **Blowers Update**

Exec Dir Tyson stated everything is going good with the blowers. They have finished the 14-day trial. Dan Small added the controls are updated, training has been provided, and blowers are performing better than expected, which is going to help with the energy grant. Now, we're in the final close-out of documentations, that involves the service maintenance plan.

B. **Republic Service Update**

Attorney Neal stated on the contract with Republic Service has been finalized, which ends in June 2022. Retro payment will be issued from July 1, 2021, to current.

C. **CSL Update**

Exec Dir Tyson stated CSL is running a little behind schedule, however, CSL still proceeding forward.

D. **NARP Update**

Exec Dir Tyson stated that there's a meeting with Dan Small to start doing all the planning for the public notifications.

E. **Bradley Property**

Chairman Curtis stated it's still up for discussion. Informed Dan to look at both options of expansion with the purchase of Bradley property and without the purchase of Bradley property. There was further discussion on this matter regarding: the odor, intend to sell letter, the effects of extra cost for the community.

F. **Each Municipal to discuss on CMOM Status**

Exec Dir Tyson stated Aroma Park is proceeding and almost completed and Kankakee is proceeding. He sent an email out to MG2A regarding both Bradley and Bourbonnais. Vice Chair Schore and Dir Romo stated they will reach out to MG2A as well. Exec Dir Tyson stated we need the CMOM complete by the end of February 2022.

G. **Discussion for Hiring a Lobbyist**

Chairman Curtis stated we need to put together a Request for Proposal. Dan informed the board that he had a meeting with the Illinois Association Wastewater Agency. There's a five-year plan they are implementing regarding this infrastructure bill that's going into the SRF (State Revolving Fund) loan program. It should start by July 1, 2022 and run thru the course of the next five years. A portion of the program consists of principle forgiveness. Dir Hunter asked Dan, "does he have his list ready?" Dan replied, yes, the capital improvement plan (CIP). Dir Hunter informed everyone that Senator Joyce was asking all the villages and cities to submit projects to him as well. Dan stated projects need to be at a point where agency is ready to fill out loan applications and ready to request for proposal (RFP). There was more detailed information discussed regarding this funding: and how it will be implemented, what's all needed to qualify, and are there other grants KRMA could qualify for.

VI. **New Business**

A. **Resolution Appointing David Tyson as Executive Director of the Kankakee River Metropolitan Agency**

Chairman Curtis recommend appointing David Tyson, with Tyson Enterprise LLC as Executive Director for KRMA, effective January 1, 2022. Motion to approve recommendation appointing David Tyson, Tyson Enterprises LLC, as Kankakee River Metropolitan Agency's Executive Director was made by Dir Hunter and seconded by Vice Chairman Schore. All board members voted in favor of. Motion Carries. Resolution was signed by Chairman Curtis and Secretary Brian Stump.

VII. **Executive Session**

Motion to go into Executive Session to discuss Personnel, and probable or imminent litigation pursuant to Sections 2(c)(1) and 2(c)(11) of the open meetings act, was made by: Dir. Hunter and seconded by: Dir. Romo. Motion carried.

Roll call was taken, and all Board Members were present.

The Board went into Executive Session to discuss Personnel and probable or imminent litigation.

Motion to return to Open Session was made by: Dir. Osenga and seconded by: Dir. Swanson. Motion carried.

Roll call was taken, and all Board Members were present.

With the Board back in open session, there was no motion

VIII. **Next Meeting**

Next Regular Board Meeting- **Thursday, February 24, 2022 (9:00 A.M. at KRMA Board Room)**

Motion to Adjourn was made by: Dir Osenga and seconded by Vice Chairman Schore. All board members present voted in favor of. Motion Carries.



Providing Wastewater Treatment to the Kankakee River Valley



Monthly Operations Report

January 2022

KRMA'S JANUARY HIGHLIGHTS:

ComEd is processing incentive payment to KRMA under the energy saving and grant program. KRMA'S blower upgrades which are performing better than expectation has allowed for incentive pay from this program. Payment is expected in February or March.

The Agency has successfully completed and submitted several documents, including Bio-Solids annual reports and information requested by USEPA region 5 regarding Compliance Assurance letter. The Agency also submitted its' Risk Management plan to USEPA, required every 5 years. The annual sludge report to the IEPA was also submitted.

The month of January, the Agency had no violations of the Illinois Environmental Protection Agency NPDES (National Pollutant Discharge Elimination System) permits.

1.0 WASTEWATER TREATMENT FACILITY OPERATION

Attachment A Details the monthly operational information for the facility.

2.0 INFLUENT FLOW

Table 2.1 Summarizes total flow and average daily flow to the facility from each municipality.

Attachment B for details of daily flow rates.

Table 2.1
Plant Flows

Municipality	Plant Influent	Kankakee	Bourbonnais	Bradley	Aroma Park
Total Flow (MGD)	392.08	252.47	92.637	45.767	1.209
Daily Average Flow (MGD)	12.65	8.14	2.988	1.476	0.039

3.0 EFFLUENT QUALITY

Table 3.1 Summarizes the effluent quality data.

Table 3.1
Effluent Quality

	IEPA Limits	Effluent Average
Biochemical Oxygen Demand (BOD) – Monthly Average	20 mg/l	6 mg/l
Total Suspended Solids (TSS) - Monthly Average	25 mg/l	22 mg/l
PH	6-9 SU	7.27 SU
Chlorine Residual	0.05 mg/l	n/a
Fecal Coliform	400/100 ml	n/a

ODOR ISSUES:

- There were no odor complaints registered at the KRMA facility in January.
- There were no odor complaints registered at the East Gate site in January.

4.0 PERSONNEL

The Agency would like to say “HAPPY BIRTHDAY” to all the employees’ born in January.

Employees continue to follow the COVID-19 Warning signs and Safety Tips. One of the best ways to help keep workers healthy is to stay home **except** for necessary outings, and when you do go out for the necessities, there are steps you can take to minimize the risk of spreading illness.

5.0 MAINTENANCE AND REPAIR

Number of Work Orders Closed for the Month:	1087
Hours of Scheduled Work Orders Performed:	658.63

6.0 SLUDGE HANDLING

Start Date: 01/01/2022
End Date: 01/31/2022

Gallons of sludge produced and sent to thickening:	2,776,056.00
Gallons of sludge put into storage after thickening:	970,200.00
Sludge removed from the plant for land application:	0.00
Sludge remaining in storage as of November 30th:	4,700,000.00

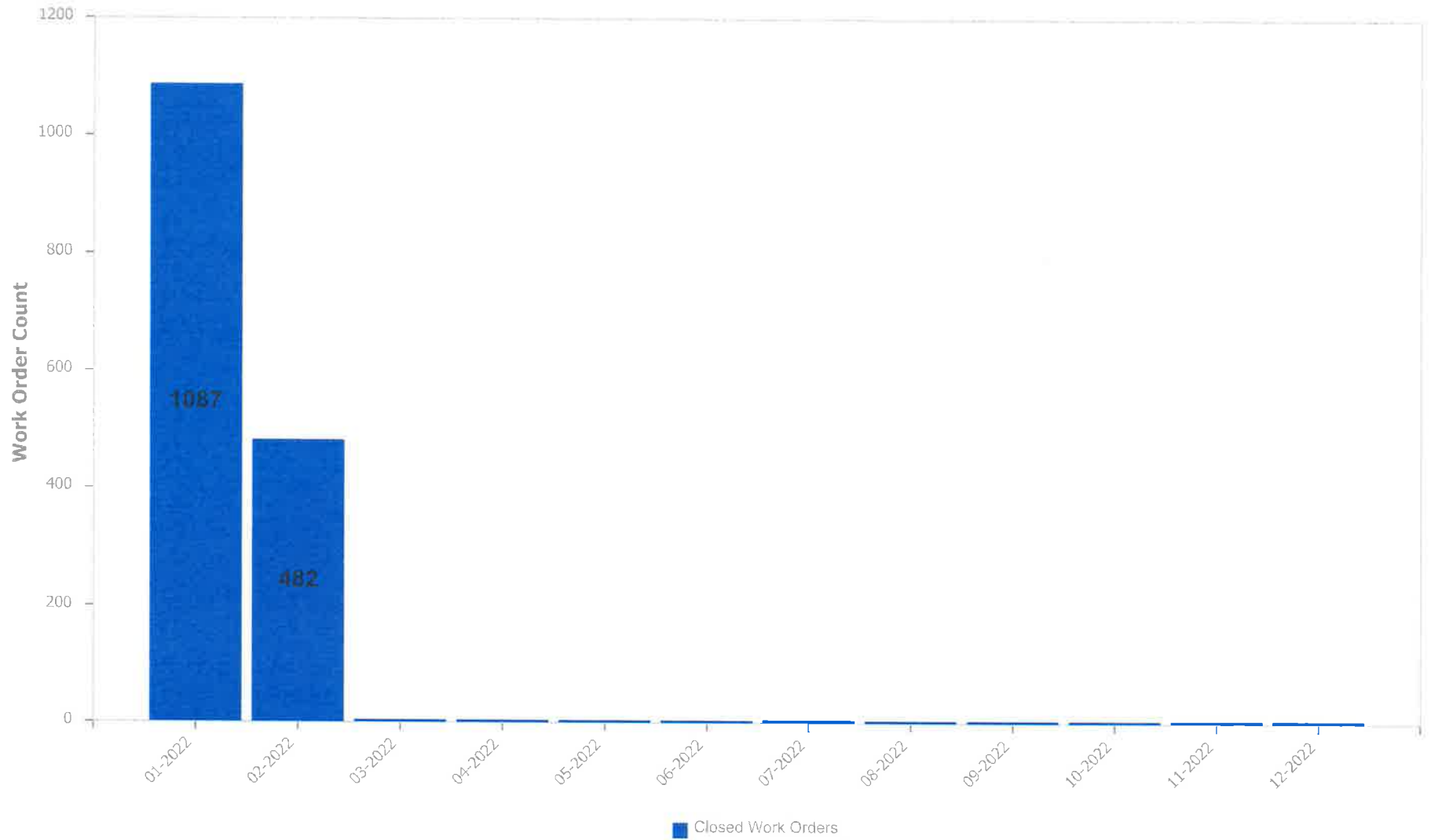
7.0 WATER USAGE

JANUARY 2022 (29 DAYS): 42,818 CU FT= 320,300 GALS. = \$2,632.45

NUMBER OF DAYS IN THE BILLING CYCLE: 29

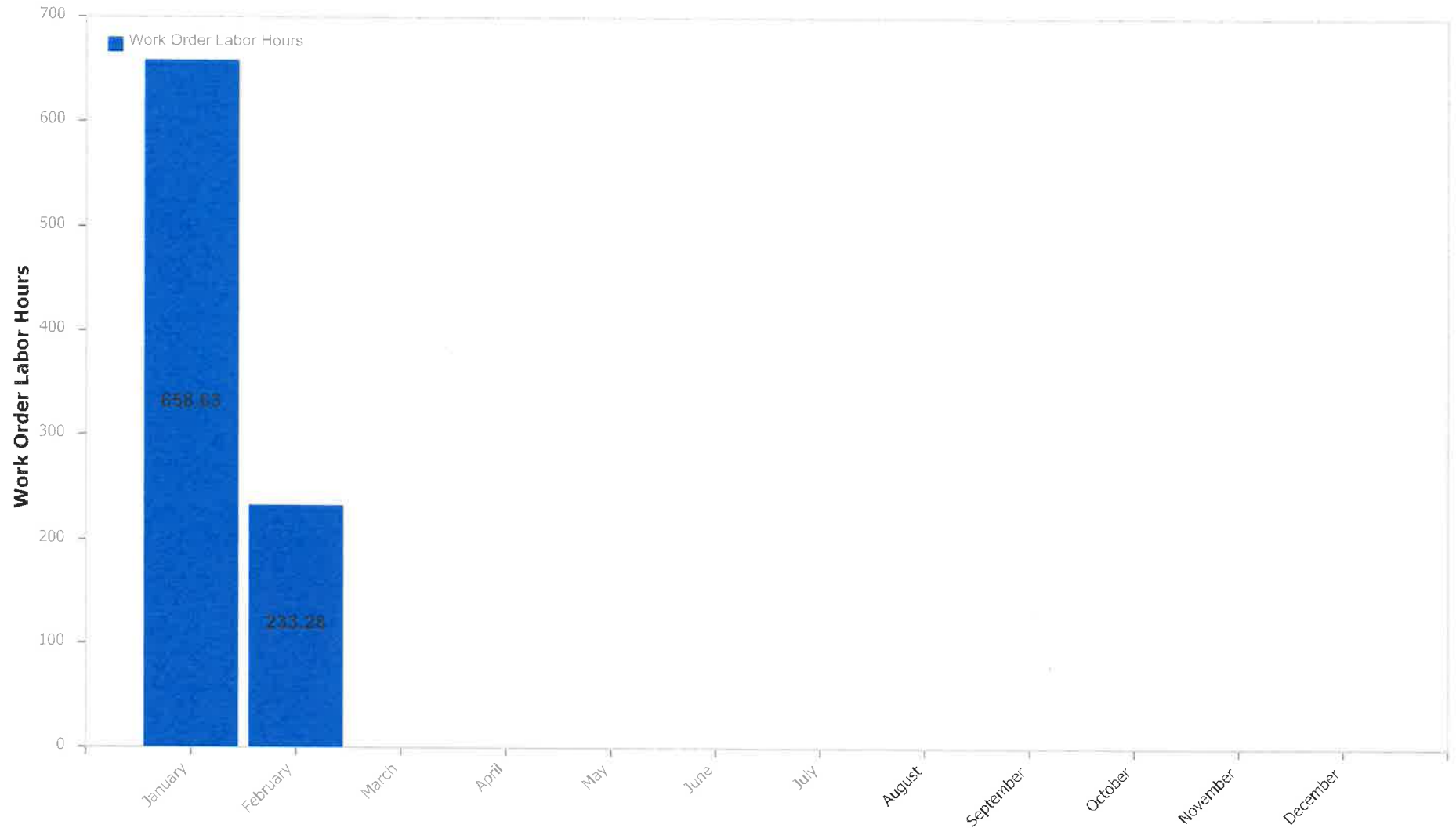
Work Orders Closed By Month

From January, 2022 to December, 2022



Work Order Labor Hours by Month

2022



ATTACHMENT

A

DMR Monthly Report

1/1/2022 to 1/31/2022

Var #	452	159	119	236	454	351	113	237	386
	EFF FLOW	001 Eff pH	FINAL EFF TSS	Weekly ave Eff TSS	EFF TSS	WeeklyAveEffTSS	EFF-C-BOD	Weekly Ave EffCBOD	EFF C-BOD
Date	MGD	STD UNIT	mg/L	MG/L	LBS/D	LBS/Day	mg/l	MG/L	lbs\day
1/1/2022	13.789		18	21	2,070	2,442	4	5	460
1/2/2022	14.138		16		1,887		4		472
1/3/2022	13.737	7.14	16		1,833		5		573
1/4/2022	13.985	7.33	27		3,149		6		700
1/5/2022	14.019	7.21	23		2,689		6		702
1/6/2022	13.666	7.26	21		2,393		6		684
1/7/2022	13.268	7.36	14		1,549				
1/8/2022	13.098		14	19	1,529	2,147	5	5	546
1/9/2022	12.963		7		757		4		432
1/10/2022	12.669	7.19	15		1,585		5		528
1/11/2022	12.820	7.17	15		1,604		4		428
1/12/2022	12.784	7.09	21		2,239		4		426
1/13/2022	12.832	7.25	25		2,675		4		428
1/14/2022	12.329	7.20	33		3,393				
1/15/2022	12.292		66	26	6,766	2,717	5	4	513
1/16/2022	12.291		51		5,228		4		410
1/17/2022	12.400		29		2,999		9		931
1/18/2022	12.590	7.08	35		3,675		13		1,365
1/19/2022	12.123	7.24	35		3,539		10		1,011
1/20/2022	11.934	7.16	13		1,294		11		1,095
1/21/2022	11.766	7.57	30		2,944				
1/22/2022	11.796		28	32	2,755	3,205	8	10	787
1/23/2022	11.588		19		1,836		6		580
1/24/2022	12.168	7.24	17		1,725		4		406
1/25/2022	12.235	6.99	14		1,429		4		408
1/26/2022	12.083	8.08	19		1,915		4		403
1/27/2022	12.198	7.16	14		1,424		12		1,221
1/28/2022	11.980	7.16	16		1,599				
1/29/2022	12.377		14	16	1,445	1,625	3	6	310
1/30/2022	12.418		13		1,346		2		207
1/31/2022	11.744	7.57	16		1,567		6		588

Minimum	11.588	6.99	7	16	757	1,625	2	4	207
Maximum	14.138	8.08	66	32	6,766	3,205	13	10	1,365
Average	12.648	7.27	22	23	2,350	2,427	6	6	615
Sum	392.080	145.45	694	113	72,838	12,136	158	30	16,612

Limit	Range 6-9		25	45	5,213	9,383	20	40	4,170
--------------	------------------	--	-----------	-----------	--------------	--------------	-----------	-----------	--------------

DMR Monthly Report

1/1/2022 to 1/31/2022

Var #	352	187	191	401	101	450	115	451	455
	WeeklyAverageEffCBOD	001 EFF CL2	FECAL COLI 001	TOTAL INF FLOW	INFLUENT BOD	INF BOD LOAD	INFLUENT TSS	INF TSS	BOD REMOVAL
Date	LBS/Day	mg/L	#/100ml	MGD	mg/L	LBS/D	mg/L	LBS/D	%
1/1/2022	554			13.79	109	12,535	174	20,010	96
1/2/2022				14.14	140	16,508	177	20,870	97
1/3/2022				13.74	224	25,663	186	21,309	98
1/4/2022				13.99	223	26,010	177	20,644	97
1/5/2022				14.02	287	33,556	179	20,928	98
1/6/2022				13.67	304	34,648	112	12,765	98
1/7/2022				13.27			93	10,291	
1/8/2022	613			13.10	239	26,108	205	22,394	98
1/9/2022				12.96	148	16,000	138	14,919	97
1/10/2022				12.67	190	20,075	103	10,883	97
1/11/2022				12.82	89	9,516	98	10,478	96
1/12/2022				12.78	224	23,883	157	16,739	98
1/13/2022				12.83	289	30,928	194	20,762	99
1/14/2022				12.33			262	26,940	
1/15/2022	459			12.29	273	27,987	209	21,426	98
1/16/2022				12.29	133	13,633	45	4,613	97
1/17/2022				12.40	360	37,230	54	5,584	98
1/18/2022				12.59	385	40,425	133	13,965	97
1/19/2022				12.12	334	33,769	135	13,649	97
1/20/2022				11.93	386	38,418	142	14,133	97
1/21/2022				11.77			67	6,575	
1/22/2022	1,038			11.80	255	25,087	331	32,563	97
1/23/2022				11.59	270	26,094	382	36,918	98
1/24/2022				12.17	235	23,848	177	17,962	98
1/25/2022				12.24	362	36,938	174	17,755	99
1/26/2022				12.08	156	15,720	188	18,945	97
1/27/2022				12.20	234	23,805	326	33,164	95
1/28/2022				11.98			166	16,586	
1/29/2022	555			12.38	235	24,258	219	22,606	99
1/30/2022				12.42	180	18,642	202	20,920	99
1/31/2022				11.74	366	35,848	60	5,877	98

Minimum	459			11.59	89	9,516	45	4,613	95
Maximum	1,038			14.14	386	40,425	382	36,918	99
Average	644			12.65	246	25,820	170	17,844	98
Sum	3,219			392.08	6,630	697,132	5,265	553,175	2,633

Limit	8,340	0.05	400						
--------------	--------------	-------------	------------	--	--	--	--	--	--

DMR Monthly Report

1/1/2022 to 1/31/2022

Var #	456	1040	1041	1042	1043	255	297	953	1023
Date	TSS REMOVAL %	North Effluent DO - SCADA mg/l	South Effluent DO - SCADA mg/l	Daily Average Effluent DO mg/l	Effluent DO weekly average mg/l	FINAL EFF NH3N mg/L	Eff Nitrogen # #/day	Eff_Total Phosphorus-TP(TNT) mg/l	Effluent Total Nitrogen mg/l
1/1/2022	90	8.90	8.36	8.63	8.44				
1/2/2022	91	9.38	8.86	9.12		0.05	5.90	0.15	
1/3/2022	91	9.57	9.08	9.33		0.05	5.73	0.14	11.40
1/4/2022	85	9.35	8.73	9.04		0.05	5.83	0.21	
1/5/2022	87	9.29	8.61	8.95		0.12	13.80	0.25	
1/6/2022	81	9.48	8.82	9.15		0.05	5.70	0.20	
1/7/2022	85	9.65	9.06	9.36					
1/8/2022	93	9.50	8.94	9.22	9.17				
1/9/2022	95	9.57	9.07	9.32		0.05	5.42	0.13	6.92
1/10/2022	85	9.77	9.36	9.57		0.09	9.27	0.30	
1/11/2022	85	9.54	9.04	9.29		0.22	23.20	0.36	
1/12/2022	87	8.61	8.38	8.50		0.19	20.26	0.48	
1/13/2022	87	8.94	8.38	8.66		0.37	40.03	0.38	
1/14/2022	87	8.02	8.28	8.15					
1/15/2022	68	9.04	8.46	8.75	8.89				
1/16/2022	-13	9.13	8.53	8.83					
1/17/2022	46	9.12	8.59	8.86		0.19	19.34	0.23	11.10
1/18/2022	74	7.72	8.38	8.05		2.18	228.90	0.31	
1/19/2022	74	7.53	8.46	8.00		1.35	136.49	0.25	
1/20/2022	91	8.34	8.77	8.56		0.78	77.53	0.31	
1/21/2022	55	8.75	8.83	8.79					
1/22/2022	92	9.33	8.69	9.01	8.58				
1/23/2022	95	9.38	8.86	9.12		0.11	10.24	0.36	
1/24/2022	90	9.34	8.91	9.13		0.16	15.73	0.29	
1/25/2022	92	9.45	9.00	9.23		0.13	13.37	0.33	
1/26/2022	90	9.26	9.02	9.14		0.60	60.56	0.46	
1/27/2022	96	8.42	8.77	8.60		0.26	26.25	0.39	13.70
1/28/2022	90	9.03	8.76	8.90					
1/29/2022	94	8.19	8.65	8.42	8.93				
1/30/2022	94	9.29	8.72	9.01		0.05	5.18	0.15	11.60
1/31/2022	73	9.26	8.74	9.00		0.29	28.21	0.18	

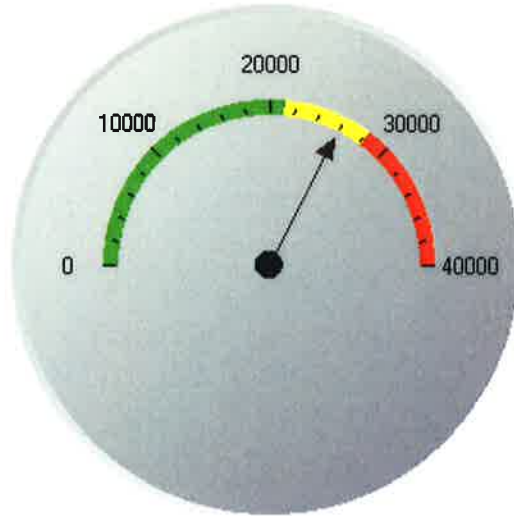
Minimum	-13	7.53	8.28	8.00	8.44	0.05	5.18	0.13	6.92
Maximum	96	9.77	9.36	9.57	9.17	2.18	228.90	0.48	13.70
Average		9.04	8.75	8.89	8.80	0.35	36.04	0.28	10.94
Sum	2,530	280.15	271.11	275.63	44.01	7.32	756.92	5.87	54.72

Limit				min >4.0	>4.5	7.5	1564		
				avg >6.0					

Influent BOD loading Lbs - Monthly AVG

25,820 Lbs./Day

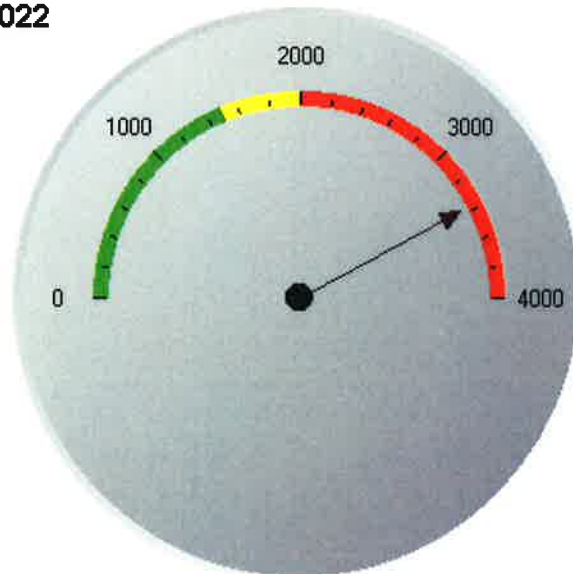
01/01/2022 - 01/31/2022



Influent NH3 loading Lbs - Monthly AVG

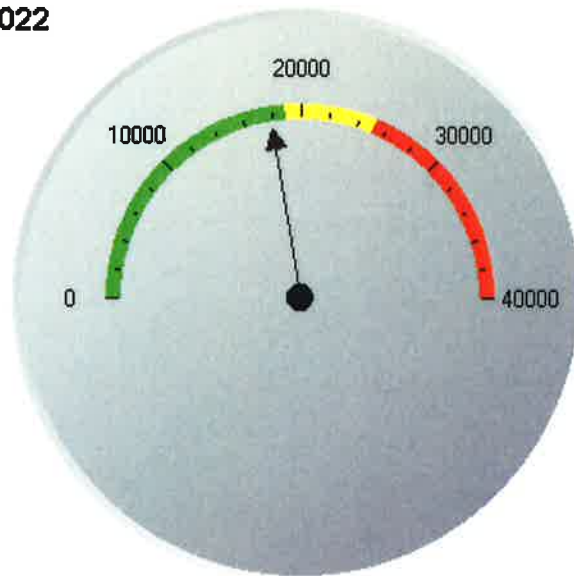
3,370 Lbs./Day

01/01/2022 - 01/31/2022



Influent TSS loading Lbs - Monthly AVG
01/01/2022 - 01/31/2022

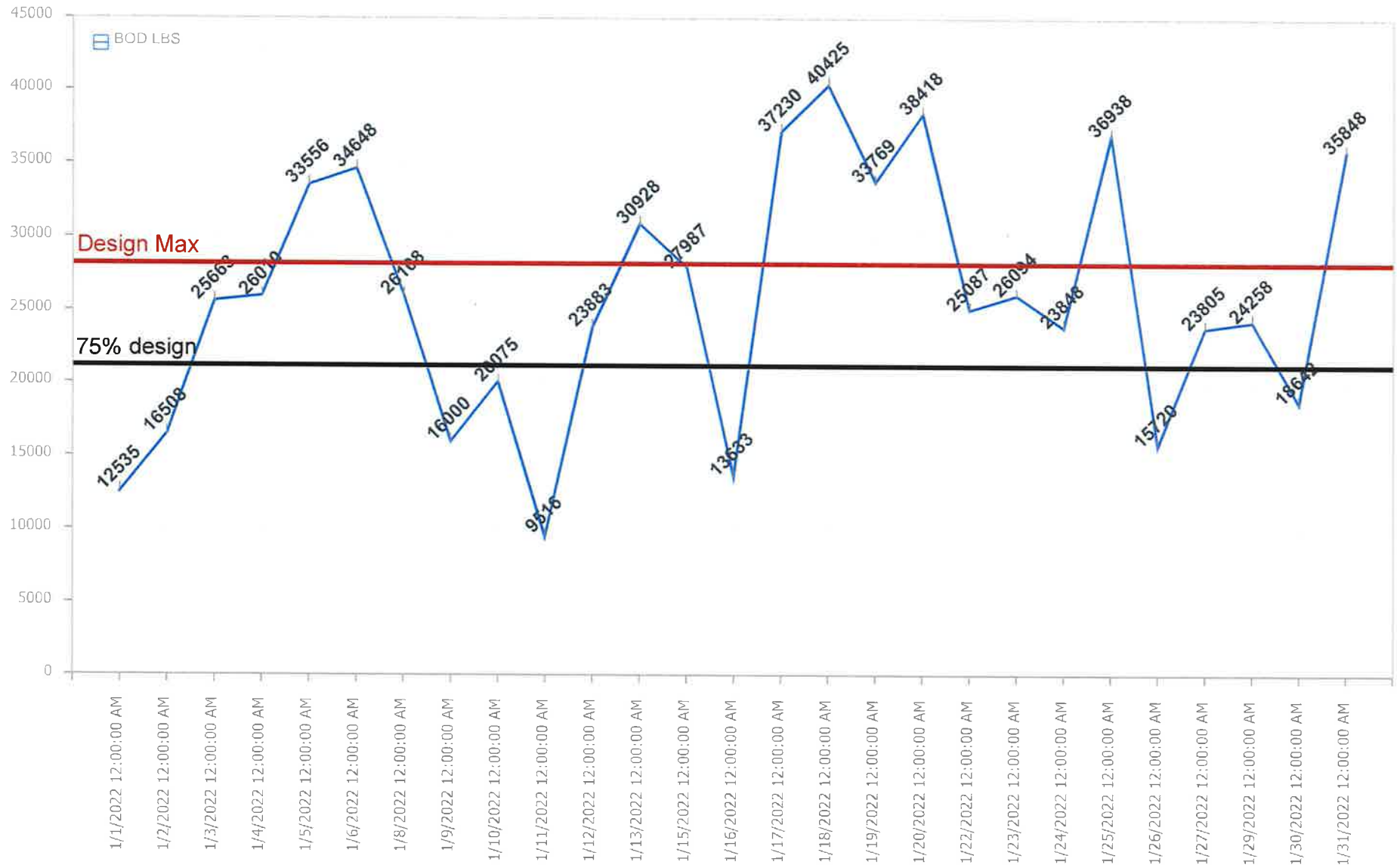
17,844 Lbs./Day



0 to 18900 - Target Loading
18900 to 25200 - Above 75% Threshold
Above 25200

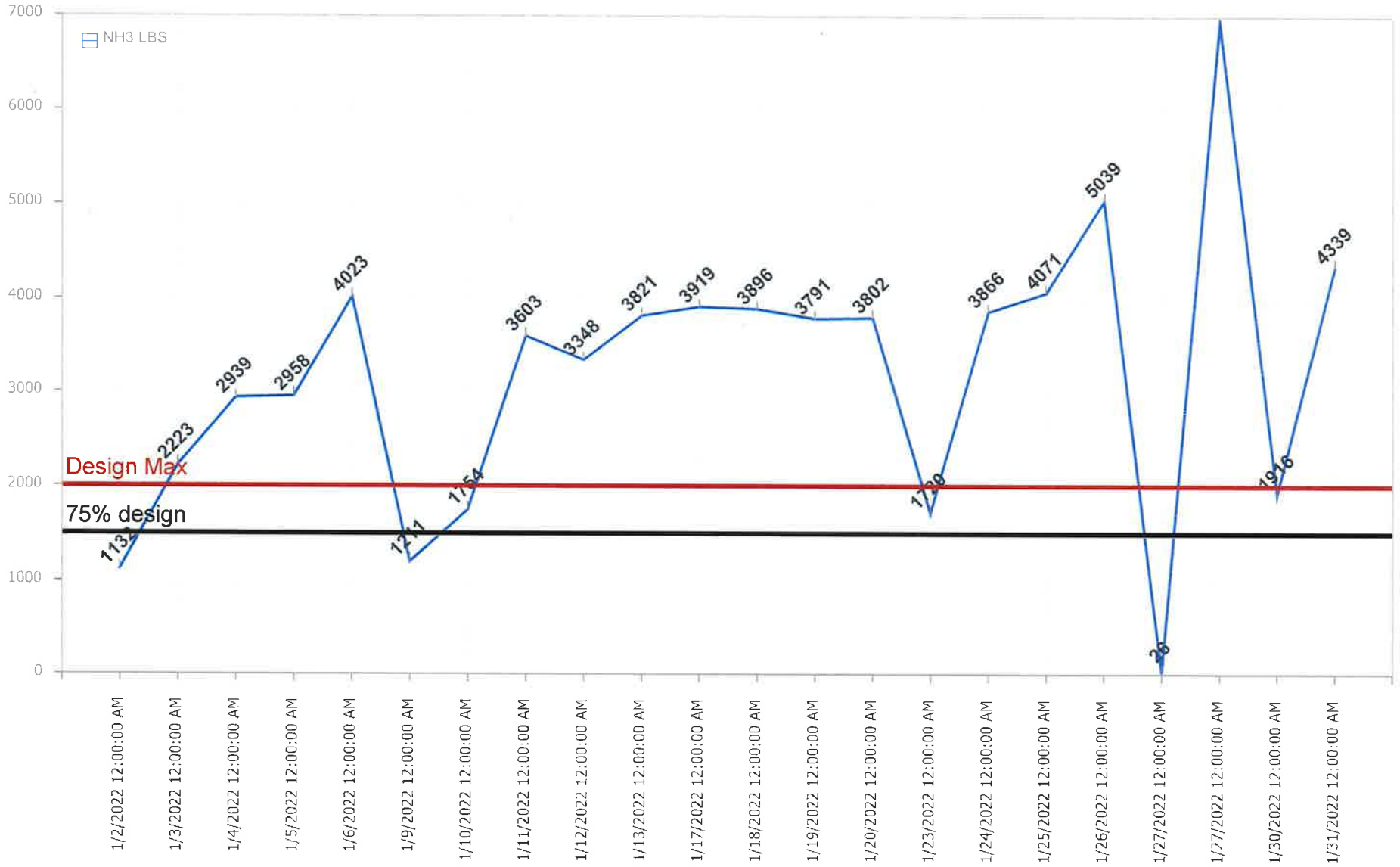
KRMA influent BOD pounds

Average Lbs. BOD: 25,819.70



KRMA influent NH3 pounds

Average Lbs. NH3: 3,197.09



ATTACHMENT

B

ATTACHMENT

C



SAFETY MEETING
February 10, 2022
9:30am & 1:30pm
Agenda

I. Safety Minutes

Review minutes from January 2022

II. Old Business

There were no lost time accidents for the month of January 2022

III. New Business

A. Safety Training

1. Heavy Equipment Hand Signaling
2. Cold and Flu Prevention

B. Safety Concerns

C. Safety Team Leader Report

D. Open Discussion

Next Meeting: Tuesday, March 8, 2022 9:30am & 1:30pm



SAFETY MEETING
January 10, 2021
9:30am & 1:30pm
Minutes

In attendance:

9:30am session:

Melanie Gossett, Facilitator

Dan Combs	Shaun Ownbey	Shawn Malone	Nick Scheppler
Max Gossett	Alex Bowser		

1:30pm session:

Melanie Gossett, Facilitator

Jack Renchen	Jim Churney	Ron Haney	Mike Gowler
Bryan Kennedy	Josh Peters	John Lund	Mike Arseneau
Andy Summers	Nick Tucker		

Absent:

Brian Power

I. Safety Minutes

Reviewed minutes from December 9, 2021 – Approved

II. Old Business

There were no lost time accidents reported for the month of December 2021.

III. New Business

A. Safety Training

1. PPE Training video *Slips, Trips & Falls Prevention* was presented.
2. The handout *Protecting Yourself from Cold Stress* was discussed.
3. Atlas Copco was onsite to train operators on the new blower system.

B. Safety Concerns

1. The grating by influent pump #1 motor/gear assembly is concave and not safe to step on.

✓ Addressed

2. Snow removal protocol was discussed.

3. There was suggestion to hang the dolly for the submersive part of the Godwin pump on the pump trailer.

C. Safety Team Report

No additional concerns mentioned.

D. Open Discussion

1. The new quarantine recommendations from the CDC regarding Covid-19 was shared.

2. Everyone was given a reminder to complete their required CEUs before the deadline.

3. KRMA Weight Loss Challenge is in full swing. It was suggested that the total pounds of weight loss be compared to the total of the 2021 Weight Loss Challenge.

Next Meeting: **Thursday, February 10, 2021**
9:30am & 1:30pm

ATTACHMENT

D

FIELD CALIBRATION SHEET

COMPANY: KRMA

CITY: KANKAKEE

FLOW METER MODEL: Siemens Hydro Ranger #1

Influent February 8th, 2022

PRIMARY DEVICE: Flume

FLOW: 0-73 MGD

MEASURING DEVICE: Ultrasonic

CHECK POINTS:

LEVEL? YES

FREE FLOWING? Yes

TURBULENCE? No

BLOCKAGE? NO

SURFACE BUILD-UP? No

HEAD MEASURING DEVICE MOUNTED PROPERLY? YES

BLOCKAGE IN HEAD MEASURING DEVICE? NO

IS FLOW METER PROGRAMMED CORRECTLY? YES

CALIBRATION:

NOTE: THE ZERO POINT FOR MEASURING MUST BE LEVEL WITH THE WEIR CREST OR FLUME ZERO POINT:

A) IF POSSIBLE, CUT-OFF FLOW & SET LEVEL TO 0.000FT
LEVEL BEFORE:

LEVEL AFTER:

B) IF FLOW CANNOT BE CUT-OFF, ADJUST LEVEL ON METER TO MEASURED
POINT:

LEVEL BEFORE: Target Set 20 MGD AS Found 19.94 MGD

LEVEL AFTER: 19.94 MGD

LEVEL FLOW CONVERSION CHECK:

WITH FLOW THRU PRIMARY DEVICE, CHECK LEVEL TO FLOW CONVERSION WITH
HANDBOOK OR PRIMARY DEVICE DATA SHEET: YES/OK

TOTALIZER CHECK:

WITH FLOW GOING THRU PRIMARY DEVICE, VERIFY THAT TOTAL FLOW IS
INTEGRATING PROPERLY USING TIMED RATE METHOD: YES/OK

CALIBRATED BY: BRIAN SCHEPLER

DATE: 2/8/2022

BC SYSTEMS INC.
2778 N. 4000 E. ROAD
BOURBONNAIS ILLINOIS 60914
PHONE: 1-815-671-1257
FAX: 1-815-802-0219

FIELD CALIBRATION SHEET

COMPANY: KRMA

CITY: KANKAKEE/BROOKMONT

FLOW METER MODEL: ISCO Signature

INFLUENT February 8th, 2022

PRIMARY DEVICE: PHARSHAL

FLOW: 0-516 GPM 0-13.20 IN

MEASURING DEVICE: ULTRASONIC

CHECK POINTS:

LEVEL? YES

FREE FLOWING? YES

TURBULENCE? NO

BLOCKAGE? No

SURFACE BUILD-UP? NONE

HEAD MEASURING DEVICE MOUNTED PROPERLY?

BLOCKAGE IN HEAD MEASURING DEVICE? NO

IS FLOW METER PROGRAMMED CORRECTLY? Yes

CALIBRATION:

NOTE: THE ZERO POINT FOR MEASURING MUST BE LEVEL WITH THE WEIR CREST OR FLUME ZERO POINT:

A) IF POSSIBLE, CUT-OFF FLOW & SET LEVEL TO 0.000FT

LEVEL BEFORE:

LEVEL AFTER:

B) IF FLOW CANNOT BE CUT-OFF, ADJUST LEVEL ON METER TO MEASURED POINT:

LEVEL BEFORE: Target 24.125" Level 24.001"

LEVEL AFTER: 24.119"

LEVEL FLOW CONVERSION CHECK:

WITH FLOW THRU PRIMARY DEVICE, CHECK LEVEL TO FLOW CONVERSION WITH HANDBOOK OR PRIMARY DEVICE DATA SHEET: Yes

TOTALIZER CHECK:

WITH FLOW GOING THRU PRIMARY DEVICE, VERIFY THAT TOTAL FLOW IS INTEGRATING PROPERLY USING TIMED RATE METHOD: Yes

CALIBRATED BY: Brian Scheppler

DATE 2/8/2022

BC SYSTEMS INC.
2778 N. 4000 E. ROAD
BOURBONNAIS ILLINOIS 60914
PHONE: 1-815-671-1257
FAX: 1-815-802-0219

FIELD CALIBRATION SHEET

COMPANY: KRMA

CITY: BRADLEY/ RIVER DRIVE

FLOW METER MODEL: Isco Signature

INFLUENT February 8th, 2022

PRIMARY DEVICE: PHARSHAL

FLOW: 0-21.36

MEASURING DEVICE: ULTRASONIC

CHECK POINTS:

LEVEL? YES

FREE FLOWING? Yes

TURBULENCE? Yes

BLOCKAGE? NO

SURFACE BUILD-UP? NONE

HEAD MEASURING DEVICE MOUNTED PROPERLY? YES

BLOCKAGE IN HEAD MEASURING DEVICE? NO

IS FLOW METER PROGRAMMED CORRECTLY? YES

CALIBRATION:

NOTE: THE ZERO POINT FOR MEASURING MUST BE LEVEL WITH THE WEIR CREST OR FLUME ZERO POINT:

A) IF POSSIBLE, CUT-OFF FLOW & SET LEVEL TO 0.000FT

LEVEL BEFORE:

LEVEL AFTER:

B) IF FLOW CANNOT BE CUT-OFF, ADJUST LEVEL ON METER TO MEASURED POINT:

LEVEL BEFORE: Target 9.75" Level reading 9.743"

LEVEL AFTER: 9.743"

LEVEL FLOW CONVERSION CHECK:

WITH FLOW THRU PRIMARY DEVICE, CHECK LEVEL TO FLOW CONVERSION WITH HANDBOOK OR PRIMARY DEVICE DATA SHEET: YES/OK

TOTALIZER CHECK:

WITH FLOW GOING THRU PRIMARY DEVICE, VERIFY THAT TOTAL FLOW IS INTEGRATING PROPERLY USING TIMED RATE METHOD: YES/OK

CALIBRATED BY: BRIAN SCHEPPLER

DATE: 2/8/2022

BC SYSTEMS INC.
2778 N. 4000 E. ROAD
BOURBONNAIS ILLINOIS 60914
PHONE: 1-815-671-1257
FAX: 1-815-802-0219

FIELD CALIBRATION SHEET

COMPANY: KRMA

CITY: KANKAKEE

FLOW METER MODEL: Siemens Hydro Ranger #2

INFLUENT February 8th, 2022

PRIMARY DEVICE: Flume

FLOW: 0-73.425 MGD

MEASURING DEVICE: Ultrasonic

CHECK POINTS:

LEVEL? YES

FREE FLOWING? Yes

TURBULENCE? NO

BLOCKAGE? NO

SURFACE BUILD-UP? No

HEAD MEASURING DEVICE MOUNTED PROPERLY? YES

BLOCKAGE IN HEAD MEASURING DEVICE? NO

IS FLOW METER PROGRAMMED CORRECTLY? YES

CALIBRATION:

NOTE: THE ZERO POINT FOR MEASURING MUST BE LEVEL WITH THE WEIR CREST OR FLUME ZERO POINT:

A) IF POSSIBLE, CUT-OFF FLOW & SET LEVEL TO 0.000FT

LEVEL BEFORE:

LEVEL AFTER:

B) IF FLOW CANNOT BE CUT-OFF, ADJUST LEVEL ON METER TO MEASURED POINT:

LEVEL BEFORE: Target Set 20.0 MGD AS Found 19.45 MGD

LEVEL AFTER: 20.01 MGD

LEVEL FLOW CONVERSION CHECK:

WITH FLOW THRU PRIMARY DEVICE, CHECK LEVEL TO FLOW CONVERSION WITH HANDBOOK OR PRIMARY DEVICE DATA SHEET: YES/OK

TOTALIZER CHECK:

WITH FLOW GOING THRU PRIMARY DEVICE, VERIFY THAT TOTAL FLOW IS INTEGRATING PROPERLY USING TIMED RATE METHOD: YES/OK

CALIBRATED BY: BRIAN SCHEPPLER

DATE: 2/8/2022

BC SYSTEMS INC.
2778 N. 4000 E. ROAD
BOURBONNAIS ILLINOIS 60914
PHONE: 1-815-671-1257
FAX: 1-815-802-0219

FIELD CALIBRATION SHEET

COMPANY: KRMA

CITY: KANKAKEE/RIVERLANE

FLOW METER MODEL: Isco Signature

INFLUENT February 8th, 2022

PRIMARY DEVICE: PHARSHAL

FLOW: 0-516 GPM 0-13.20 IN

MEASURING DEVICE: ULTRASONIC

CHECK POINTS:

LEVEL? YES

FREE FLOWING? Yes

TURBULENCE? NO

BLOCKAGE? Yes Level tape stuck in flume, Cleaned

SURFACE BUILD-UP? No

HEAD MEASURING DEVICE MOUNTED PROPERLY? Yes

BLOCKAGE IN HEAD MEASURING DEVICE? NO

IS FLOW METER PROGRAMMED CORRECTLY? Yes

CALIBRATION:

NOTE: THE ZERO POINT FOR MEASURING MUST BE LEVEL WITH THE WEIR CREST OR FLUME ZERO POINT:

A) IF POSSIBLE, CUT-OFF FLOW & SET LEVEL TO 0.000FT

LEVEL BEFORE:

LEVEL AFTER:

B) IF FLOW CANNOT BE CUT-OFF, ADJUST LEVEL ON METER TO MEASURED POINT

C) LEVEL BEFORE: TARGET SET 24.125 Level 23.986"

LEVEL AFTER: 24.121"

LEVEL FLOW CONVERSION CHECK:

WITH FLOW THRU PRIMARY DEVICE, CHECK LEVEL TO FLOW CONVERSION WITH HANDBOOK OR PRIMARY DEVICE DATA SHEET: Yes

TOTALIZER CHECK:

WITH FLOW GOING THRU PRIMARY DEVICE, VERIFY THAT TOTAL FLOW IS INTEGRATING PROPERLY USING TIMED RATE METHOD: Yes

CALIBRATED BY: Brian Schepler

DATE: 2/8/22

BC SYSTEMS INC.
2778 N. 4000 E. ROAD
BOURBONNAIS ILLINOIS 60914
PHONE: 1-815-671-1257
FAX: 1-815-802-0219

FIELD CALIBRATION SHEET

COMPANY: KRMA

CITY: Kankakee Influent

FLOW METER MODEL: Isco Laser Flow

INFLUENT February 9th, 2022

PRIMARY DEVICE: 72" PIPE

FLOW: 0-115 MGD

MEASURING DEVICE:

CHECK POINTS:

LEVEL? YES

FREE FLOWING? Yes

TURBULENCE? NO

BLOCKAGE? NO

SURFACE BUILD-UP? Foam

HEAD MEASURING DEVICE MOUNTED PROPERLY? YES

BLOCKAGE IN HEAD MEASURING DEVICE? NO

IS FLOW METER PROGRAMMED CORRECTLY? YES

CALIBRATION:

NOTE: THE ZERO POINT FOR MEASURING MUST BE LEVEL WITH THE WEIR CREST OR FLUME ZERO POINT:

A) IF POSSIBLE, CUT-OFF FLOW & SET LEVEL TO 0.000FT

LEVEL BEFORE:

LEVEL AFTER:

B) IF FLOW CANNOT BE CUT-OFF, ADJUST LEVEL ON METER TO MEASURED POINT:

LEVEL BEFORE: Target level 43.0" As found 42.756"

LEVEL AFTER: 42.76"

LEVEL FLOW CONVERSION CHECK:

WITH FLOW THRU PRIMARY DEVICE, CHECK LEVEL TO FLOW CONVERSION WITH HANDBOOK OR PRIMARY DEVICE DATA SHEET: YES/OK

TOTALIZER CHECK:

WITH FLOW GOING THRU PRIMARY DEVICE, VERIFY THAT TOTAL FLOW IS INTEGRATING PROPERLY USING TIMED RATE METHOD: YES/OK

CALIBRATED BY: BRIAN SCHEPPLER

DATE: 2/9/2022

BC SYSTEMS INC.
2778 N. 4000 E. ROAD
BOURBONNAIS ILLINOIS 60914
PHONE: 1-815-671-1257
FAX: 1-815-802-0219

FIELD CALIBRATION SHEET

COMPANY: KRMA

CITY: BOURBONNAIS/New

FLOW METER MODEL: Isco Laser Flow

INFLUENT February 9th, 2022

PRIMARY DEVICE: 36" PIPE

FLOW: 0-21.36 MGD

MEASURING DEVICE:

CHECK POINTS:

LEVEL? YES

FREE FLOWING? Yes

TURBULENCE? NO

BLOCKAGE? NO

SURFACE BUILD-UP? None

HEAD MEASURING DEVICE MOUNTED PROPERLY? YES

BLOCKAGE IN HEAD MEASURING DEVICE? NO

IS FLOW METER PROGRAMMED CORRECTLY? YES

CALIBRATION:

NOTE: THE ZERO POINT FOR MEASURING MUST BE LEVEL WITH THE WEIR CREST OR FLUME ZERO POINT:

A) IF POSSIBLE, CUT-OFF FLOW & SET LEVEL TO 0.000FT

LEVEL BEFORE:

LEVEL AFTER:

B) IF FLOW CANNOT BE CUT-OFF, ADJUST LEVEL ON METER TO MEASURED POINT:

LEVEL BEFORE: Target level 15.00" As found 14.750"

LEVEL AFTER: 14.750" No adjustments made due to ISCO recommendations

LEVEL FLOW CONVERSION CHECK:

WITH FLOW THRU PRIMARY DEVICE, CHECK LEVEL TO FLOW CONVERSION WITH HANDBOOK OR PRIMARY DEVICE DATA SHEET: YES/OK

TOTALIZER CHECK:

WITH FLOW GOING THRU PRIMARY DEVICE, VERIFY THAT TOTAL FLOW IS INTEGRATING PROPERLY USING TIMED RATE METHOD: YES/OK

CALIBRATED BY: BRIAN SCHEPPLER

DATE: 2/9/2022

BC SYSTEMS INC.
2778 N. 4000 E. ROAD
BOURBONNAIS ILLINOIS 60914
PHONE: 1-815-671-1257
FAX: 1-815-802-0219

ATTACHMENT

E

January 2022 Monthly Pretreatment Sample Analysis (metals, cyanide & VOA) for the permitted industries were a total of **83 samples** and a total of **447 analyses**.

Gilster-Mary Lee Corporation	5 Samples
Hoffman Transportation, LLC	3 Samples
Liberty Landfill, LLC	9 Samples
Livingston Landfill	4 Samples
Natural Gas & Pipeline Co. of America	3 Samples
Newton County Landfill	13 Samples
Prairie View RDF	7 Samples
Tank Cleaning Solutions, LLC	38 Samples
Zutat Feed Solutions	1 Sample

Volumes Received for January 2022 for trucked-in industries.

Gilster-Mary Lee Corporation	28,000 gals	5 loads
Hoffman Transportation, LLC	15,000 gals	3 loads
Liberty Landfill, LLC	1,208,778 gals	182 loads
Livingston Landfill	146,664 gals	22 loads
Natural Gas & Pipeline Co. of America	35,000 gals	7 loads
Newton County Landfill	1,181,402 gals	172 loads
Prairie View RDF	115,368 gals	21 loads
Tank Cleaning Solutions, LLC	196,412 gals	38 loads
Zutat Feed Solutions	12,000 gals	2 loads
Totals:	2,938,624 gals	452 loads

The KRMA Facility received a total of **102 loads** of septage which totalled **331,000 gallons** for the month of January 2022

KRMA YEARLY UTILITY USAGE - (2022)

	KRMA ELECTRIC ENERGY USE								KRMA WATER USE					
	Total KWH	Days	Total Cost \$/month	Total Cost \$/day	Hydro KWH	Methane KWH	Mid-American KWH	KWH/HR (Avg)	\$/KWH	Gallons	Days	Total Cost \$/Billing Period	Gallons/Day	Total Cost \$/day
JANUARY	926,221	33	\$ 48,890	\$ 1,482	-	226,815	699,406	1,169	\$ 0.0528	320,300	29	\$ 2,632	11,045	91
FEBRUARY	0			#DIV/0!	-	-		#DIV/0!	#DIV/0!				#DIV/0!	#DIV/0!
MARCH	0			#DIV/0!		-		#DIV/0!	#DIV/0!				#DIV/0!	#DIV/0!
APRIL	0			#DIV/0!				#DIV/0!	#DIV/0!				#DIV/0!	#DIV/0!
MAY	0			#DIV/0!				#DIV/0!	#DIV/0!				#DIV/0!	#DIV/0!
JUNE	0			#DIV/0!				#DIV/0!	#DIV/0!				#DIV/0!	#DIV/0!
JULY	0			#DIV/0!				#DIV/0!	#DIV/0!				#DIV/0!	#DIV/0!
AUGUST	0			#DIV/0!				#DIV/0!	#DIV/0!				#DIV/0!	#DIV/0!
SEPTEMBER	0			#DIV/0!				#DIV/0!	#DIV/0!				#DIV/0!	#DIV/0!
OCTOBER	0			#DIV/0!				#DIV/0!	#DIV/0!				#DIV/0!	#DIV/0!
NOVEMBER	0			#DIV/0!				#DIV/0!	#DIV/0!				#DIV/0!	#DIV/0!
DECEMBER	0			#DIV/0!				#DIV/0!	#DIV/0!				#DIV/0!	#DIV/0!
TOTAL	926,221	33	\$ 48,890	#DIV/0!	0	226,815	699,406	#DIV/0!	#DIV/0!			\$ 2,632	#DIV/0!	#DIV/0!
	Total KWH	Days	Total Cost \$/month	Total Cost \$/day	Hydro KWH	Methane KWH	Mid-American KWH	KWH/HR (Avg)	\$/KWH	Gallons	Days	Total Cost \$/Billing Period	Gallons/Day	Total Cost \$/day

Th

	KRMA NATURAL GAS USE				
	Therms	Days	Total Cost \$/Billing Period	Therms/Day	Total Cost \$/day
JANUARY	51,246	31	\$ 307,075	1653	\$ 9,906
FEBRUARY				#DIV/0!	#DIV/0!
MARCH				#DIV/0!	#DIV/0!
APRIL				#DIV/0!	#DIV/0!
MAY				#DIV/0!	#DIV/0!
JUNE				#DIV/0!	#DIV/0!
JULY				#DIV/0!	#DIV/0!
AUGUST				#DIV/0!	#DIV/0!
SEPTEMBER				#DIV/0!	#DIV/0!
OCTOBER				#DIV/0!	#DIV/0!
NOVEMBER				#DIV/0!	#DIV/0!
DECEMBER				#DIV/0!	#DIV/0!
TOTAL	51,246	31	\$ 307,075	#DIV/0!	#DIV/0!
	Therms	Days	Total Cost \$/Billing Period	Therms/Day	Total Cost \$/day

Annual Load / Gallon Totals

IV-B-2

2022

Month Received	Glister-Mary Lee Corporation	Hoffman Transportation, LLC	Liberty Landfill, LLC	Livingston Landfill	Natural Gas & Pipeline Co. of America	Newton County Landfill	Prairie View RDF	Tank Cleaning Solutions, LLC	Zutat Feed Solutions	Total	# Loads
January	28,000	15,000	1,208,778	146,664	35,000	1,181,402	115,368	196,412	12,000	2,938,624	452
February											
March											
April											
May											
June											
July											
August											
September											
October											
November											
December											
Totals	28,000	15,000	1,208,778	146,664	35,000	1,181,402	115,368	196,412	12,000	2,938,624	452
Average	28,000	15,000	1,208,778	146,664	35,000	1,181,402	115,368	196,412	12,000	2,938,624	452
Treatment Costs as of 05/01/21	0.082	0.056	0.056	0.056	0.082	0.08	0.056	0.082	0.071		
Treatment Costs as of 05/01/20	0.071	0.049	0.049	0.049	0.071	0.056	0.049	0.071	0.071		



**Monthly TSS/BOD
Loading Report**
January, 2022

1600 West Brookmont Blvd.
Kankakee, IL 60901
Phone: 815-933-0444
Fax: 815-933-0104

Hauler	Gallons	Lbs TSS	Lbs BOD
Gilster-Mary Lee Corporation	28,000	164	603
Hoffman Transportation, LLC	15,000	776	545
Liberty Landfill, LLC	1,208,778	941	19,398
Livingston Landfill	146,664	745	8,605
Natural Gas & Pipeline Co. of America	35,000	4	14
Newton County Landfill	1,181,402	17,306	163,530
Prairie View RDF	115,368	569	5,503
Tank Cleaning Solutions, LLC	196,412	237	4,416
Zutat Feed Solutions	12,000	630	551
Totals:	2,938,624	21,372	203,163

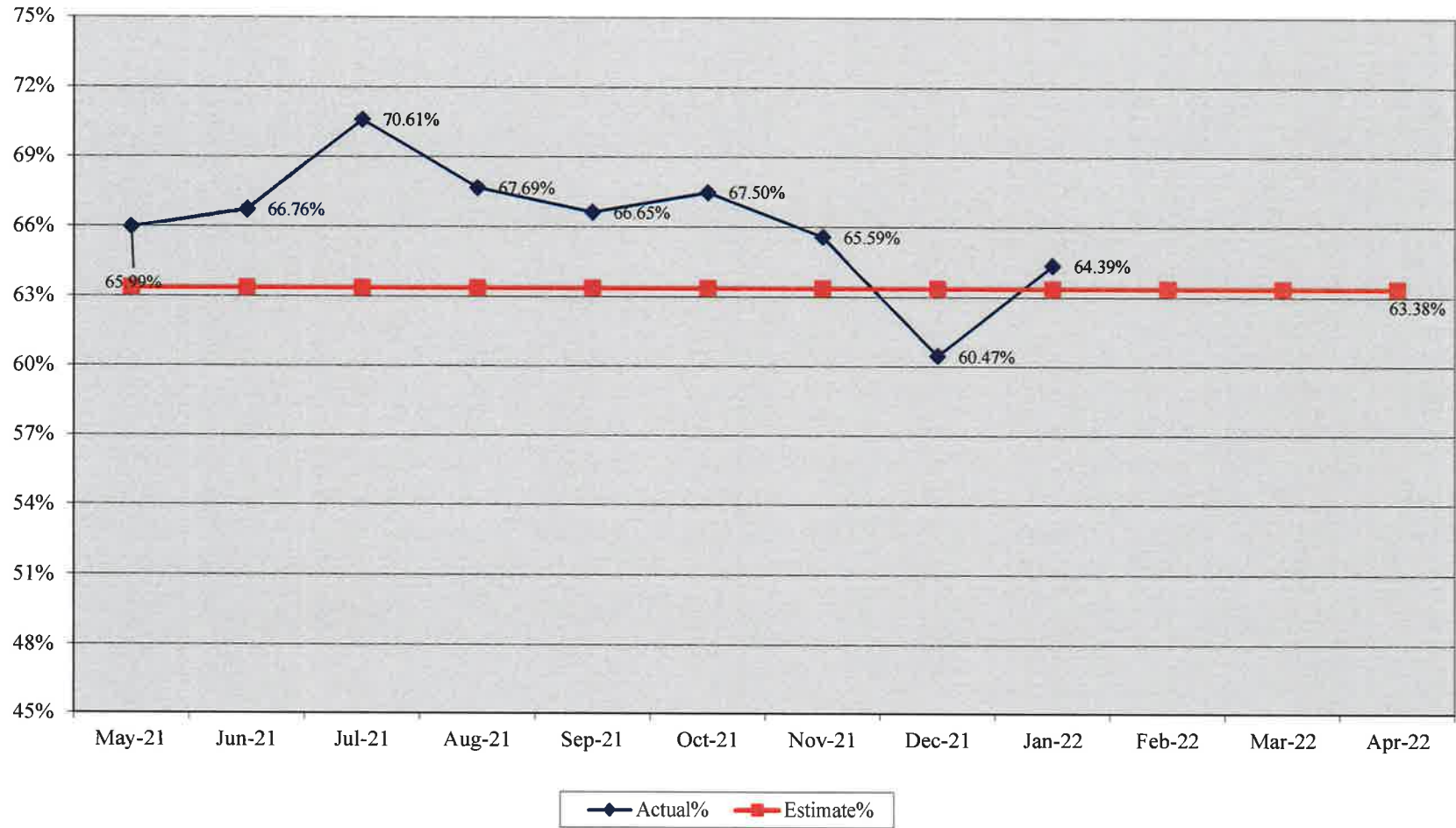
IV-C-3

Kankakee Flows				Bradley Flows				Bourbonnais Flows				Aroma Park Flows						
	YTD Actual Flows	Actual Flows	% of Total	Estimated %	YTD Actual Flows	Actual Flows	% of Total	Estimated %	YTD Actual Flows	Actual Flows	% of Total	Estimated %	YTD Actual Flows	Actual Flows	% of Total	Estimated %	TOTALS	TOTALS
5/31/2019	667.833	667.833	67.05%	67.50%	132.185	132.185	13.27%	12.70%	193.143	193.143	19.39%	19.50%	2.933	2.933	0.29%	0.30%	996.094	1.000
6/30/2019	853.380	506.810	68.06%	67.50%	156.187	95.690	12.85%	12.70%	257.634	140.808	18.91%	19.50%	2.604	1.314	0.18%	0.30%	744.622	1.000
7/31/2019	1188.348	334.968	65.62%	67.50%	223.172	66.985	13.12%	12.70%	364.726	107.092	20.98%	19.50%	4.009	1.405	0.28%	0.30%	510.450	1.000
8/31/2019	1426.054	237.707	64.71%	67.50%	263.967	40.795	11.11%	12.70%	452.075	87.348	23.78%	19.50%	5.477	1.468	0.40%	0.30%	367.318	1.000
9/30/2019	1697.774	271.720	62.62%	67.50%	315.941	51.974	11.98%	12.70%	560.552	108.477	25.00%	19.50%	7.214	1.737	0.40%	0.30%	433.908	1.000
10/31/2019	2017.292	319.518	62.09%	67.50%	386.804	70.863	13.77%	12.70%	682.720	122.168	23.74%	19.50%	9.274	2.060	0.40%	0.30%	514.609	1.000
11/30/2019	2311.302	294.010	62.69%	67.50%	451.917	65.113	13.88%	12.70%	791.064	108.344	23.10%	19.50%	10.829	1.555	0.33%	0.30%	469.022	1.000
12/31/2019	2560.652	249.350	62.20%	67.50%	507.198	55.281	13.79%	12.70%	886.074	95.010	23.70%	19.50%	12.079	1.250	0.31%	0.30%	400.891	1.000
1/31/2020	2986.352	425.700	63.26%	67.50%	604.545	97.347	14.46%	12.70%	1033.268	147.194	21.87%	19.50%	14.824	2.745	0.41%	0.30%	672.986	1.000
2/28/2020	3293.032	306.680	60.94%	67.50%	670.115	65.570	13.03%	12.70%	1162.802	129.334	25.70%	19.50%	16.484	1.660	0.33%	0.30%	503.244	1.000
3/31/2020	3624.682	331.650	59.83%	67.50%	747.385	77.270	13.94%	12.70%	1306.102	143.500	25.89%	19.50%	18.359	1.875	0.34%	0.30%	554.295	1.000
4/30/2020	3924.342	299.660	59.85%	67.50%	820.180	72.795	14.54%	12.70%	1432.611	126.509	25.27%	19.50%	20.059	1.700	0.34%	0.30%	500.664	1.000
		4245.605	63.67%	67.50%		891.868	13.38%			1508.928	22.63%			21.702	0.33%		6668.103	12.000
Kankakee Flows				Bradley Flows				Bourbonnais Flows				Aroma Park Flows						
	YTD Actual Flows	Actual Flows	% of Total	Estimated %	YTD Actual Flows	Actual Flows	% of Total	Estimated %	YTD Actual Flows	Actual Flows	% of Total	Estimated %	YTD Actual Flows	Actual Flows	% of Total	Estimated %	TOTALS	TOTALS
5/31/2020	789.460	789.460	69.59%	64.37%	164.256	164.256	14.48%	13.22%	177.175	177.175	15.62%	22.09%	3.597	3.597	0.32%	0.32%	1134.488	1.000
6/30/2020	1076.880	287.420	64.89%	64.37%	221.396	57.140	12.90%	13.22%	274.153	96.978	21.89%	22.09%	5.022	1.425	0.32%	0.32%	442.963	1.000
7/31/2020	1362.330	285.450	61.84%	64.37%	284.103	62.707	13.59%	13.22%	386.186	112.033	24.27%	22.09%	6.391	1.369	0.30%	0.32%	461.559	1.000
8/31/2020	1564.720	202.390	63.60%	64.37%	315.787	31.684	9.96%	13.22%	469.109	82.923	26.06%	22.09%	7.612	1.221	0.38%	0.32%	318.218	1.000
9/30/2020	1750.230	185.510	60.84%	64.37%	350.402	34.615	11.35%	13.22%	552.734	83.625	27.43%	22.09%	8.760	1.148	0.38%	0.32%	304.898	1.000
10/31/2020	1928.540	178.310	61.69%	64.37%	381.570	31.168	10.78%	13.22%	631.131	78.397	27.13%	22.09%	9.906	1.146	0.40%	0.32%	289.021	1.000
11/30/2020	2100.530	171.990	60.39%	64.37%	411.927	30.357	10.66%	13.22%	712.454	81.323	28.56%	22.09%	11.018	1.112	0.39%	0.32%	284.782	1.000
12/31/2020	2290.440	189.910	60.13%	64.37%	448.455	36.528	11.56%	13.22%	800.681	88.227	27.93%	22.09%	12.204	1.186	0.38%	0.32%	315.851	1.000
1/31/2021	2504.930	214.490	59.77%	64.37%	488.313	39.858	11.11%	13.22%	903.640	102.959	28.69%	22.09%	13.732	1.528	0.43%	0.32%	358.835	1.000
2/28/2021	2741.880	236.950	62.40%	64.37%	530.226	41.913	11.04%	13.22%	1003.243	99.603	26.23%	22.09%	14.996	1.264	0.33%	0.32%	379.730	1.000
3/31/2021	3027.860	285.980	57.99%	64.37%	597.803	67.577	13.70%	13.22%	1141.533	138.290	28.04%	22.09%	16.321	1.325	0.27%	0.32%	493.172	1.000
4/30/2021	3279.530	251.670	64.42%	64.37%	639.472	41.669	10.67%	13.22%	1237.733	96.200	24.62%	22.09%	17.450	1.129	0.29%	0.32%	390.668	1.000
		3279.530	63.383%	64.37%		639.472	12.359%			1237.733	23.921%			17.450	0.337%		5174.185	12.000
Kankakee Flows				Bradley Flows				Bourbonnais Flows				Aroma Park Flows						
	YTD Actual Flows	Actual Flows	% of Total	Estimated %	YTD Actual Flows	Actual Flows	% of Total	Estimated %	YTD Actual Flows	Actual Flows	% of Total	Estimated %	YTD Actual Flows	Actual Flows	% of Total	Estimated %	TOTALS	TOTALS
5/31/2021	346.570	346.570	65.99%	63.38%	60.497	60.497	11.52%	12.36%	116.826	116.826	22.24%	23.92%	1.290	1.290	0.25%	0.34%	525.183	1.000
6/30/2021	634.090	287.520	66.76%	63.38%	103.540	43.043	9.99%	12.36%	215.789	98.963	22.98%	23.92%	2.480	1.170	0.27%	0.34%	430.696	1.000
7/31/2021	930.320	296.230	70.61%	63.38%	137.501	33.961	8.10%	12.36%	304.021	88.232	21.03%	23.92%	3.562	1.102	0.26%	0.34%	419.525	1.000
8/31/2021	1162.810	232.490	67.69%	63.38%	166.666	29.165	8.49%	12.36%	384.716	80.695	23.49%	23.92%	4.699	1.137	0.33%	0.34%	343.487	1.000
9/30/2021	1389.410	206.600	66.65%	63.38%	193.616	26.950	8.69%	12.36%	460.262	75.546	24.37%	23.92%	5.600	0.901	0.29%	0.34%	309.997	1.000
10/31/2021	1787.590	418.180	67.50%	63.38%	265.529	71.913	11.61%	12.36%	587.784	127.522	20.58%	23.92%	7.475	1.875	0.30%	0.34%	619.490	1.000
11/30/2021	2068.130	280.540	65.59%	63.38%	314.880	49.351	11.54%	12.36%	684.120	96.336	22.52%	23.92%	8.937	1.462	0.34%	0.34%	427.689	1.000
12/31/2021	2315.330	247.200	60.47%	63.38%	362.817	47.937	11.73%	12.36%	796.476	112.356	27.48%	23.92%	10.246	1.309	0.32%	0.34%	408.802	1.000
1/31/2022	2567.800	252.470	64.39%	63.38%	408.584	45.767	11.67%	12.36%	889.113	92.637	23.63%	23.92%	11.455	1.209	0.31%	0.34%	392.083	1.000
2/28/2022				63.38%				12.36%				23.92%				0.34%	0.000	0.000
3/31/2022				63.38%				12.36%				23.92%				0.34%	0.000	0.000
4/30/2022				63.38%				12.36%				23.92%				0.34%	0.000	0.000
		2567.800	66.232%			408.584	10.539%			889.113	22.933%			11.455	0.295%		3876.952	9.000

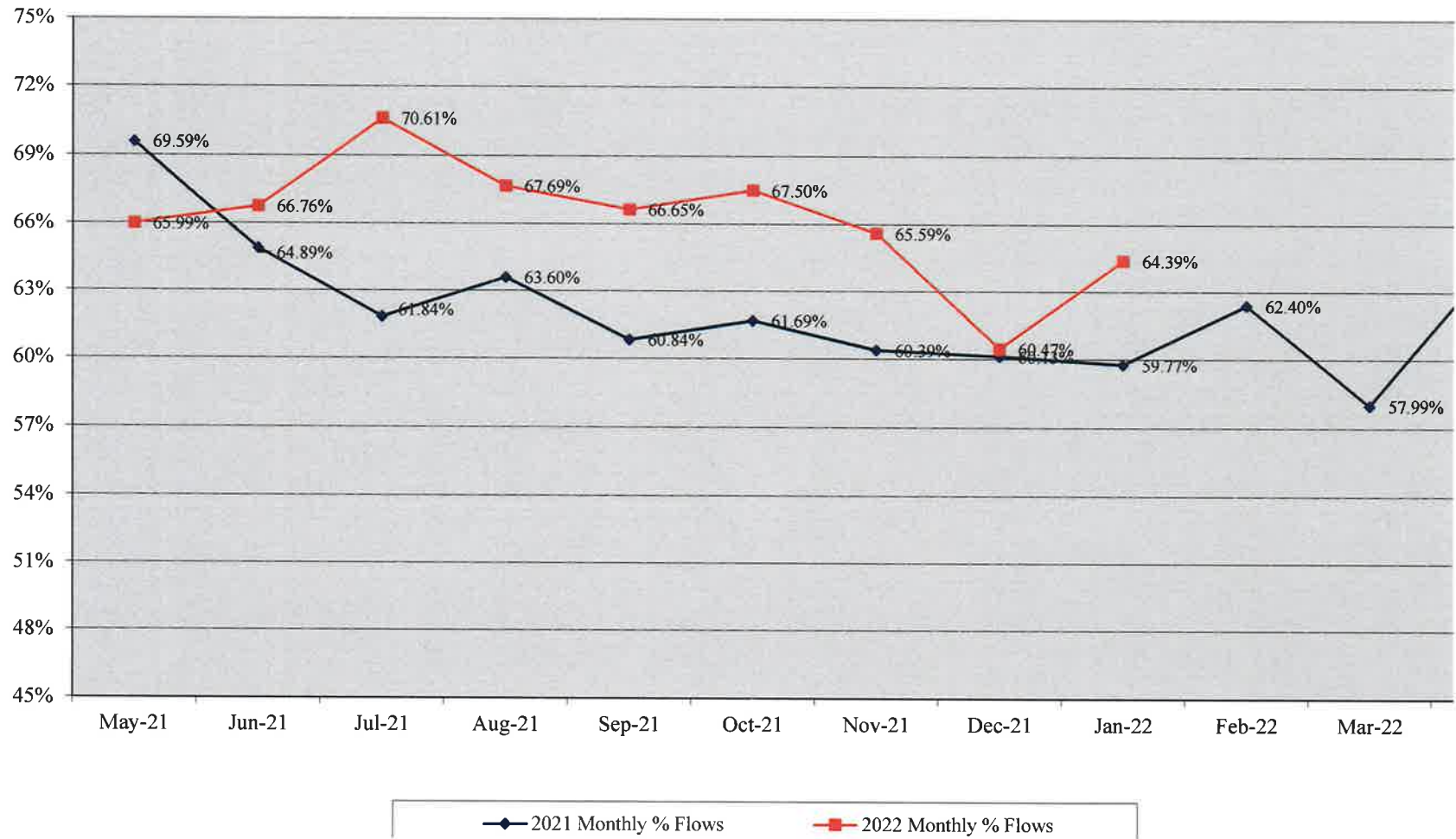
Flows
KRMA Treatment Facility
January, 2022

Date	PRECIPITA INCHES	PLANT MGD	Kankakee MGD	BOURB. MGD	BradleyFlow MGD	AromaPark MGD
1/1/2022	0.73	13.79	8.09	3.814	1.834	0.047
1/2/2022	0.00	14.14	8.27	3.975	1.849	0.047
1/3/2022	0.00	13.74	8.17	3.741	1.777	0.046
1/4/2022	0.00	13.99	8.42	3.816	1.909	0.044
1/5/2022	0.00	14.02	8.74	3.404	1.829	0.047
1/6/2022	0.00	13.67	8.70	3.187	1.735	0.041
1/7/2022	0.00	13.27	8.49	3.052	1.687	0.044
1/8/2022	0.05	13.10	8.23	3.094	1.728	0.044
1/9/2022	0.00	12.96	8.05	3.148	1.721	0.044
1/10/2022	0.00	12.67	8.13	2.946	1.560	0.037
1/11/2022	0.00	12.82	8.26	2.922	1.597	0.037
1/12/2022	0.00	12.78	8.31	2.935	1.495	0.040
1/13/2022	0.00	12.83	8.45	2.845	1.499	0.038
1/14/2022	0.00	12.33	8.15	2.767	1.376	0.036
1/15/2022	0.05	12.29	7.87	2.855	1.535	0.036
1/16/2022	0.00	12.29	7.78	2.921	1.550	0.036
1/17/2022	0.00	12.40	7.97	2.901	1.492	0.036
1/18/2022	0.00	12.59	8.32	2.872	1.359	0.040
1/19/2022	0.00	12.12	8.02	2.828	1.239	0.035
1/20/2022	0.00	11.93	7.92	2.732	1.248	0.034
1/21/2022	0.00	11.77	7.73	2.755	1.240	0.037
1/22/2022	0.00	11.80	7.59	2.739	1.429	0.037
1/23/2022	0.20	11.59	7.32	2.765	1.466	0.037
1/24/2022	0.00	12.17	8.17	2.808	1.154	0.035
1/25/2022	0.00	12.24	8.32	2.741	1.145	0.031
1/26/2022	0.00	12.08	8.20	2.691	1.155	0.038
1/27/2022	0.04	12.20	8.21	2.764	1.185	0.038
1/28/2022	0.00	11.98	8.17	2.650	1.123	0.037
1/29/2022	0.00	12.38	8.29	2.704	1.345	0.037
1/30/2022	0.00	12.42	8.16	2.818	1.404	0.037
1/31/2022	0.00	11.74	7.96	2.647	1.103	0.036
Total	1.07	392.08	252.47	92.637	45.787	1.209
Average	0.03	12.65	8.14	2.988	1.476	0.039
Minimum	0.00	11.59	7.32	2.647	1.103	0.031
Maximum	0.73	14.14	8.74	3.975	1.909	0.047
# of data	31	31	31	31	31	31

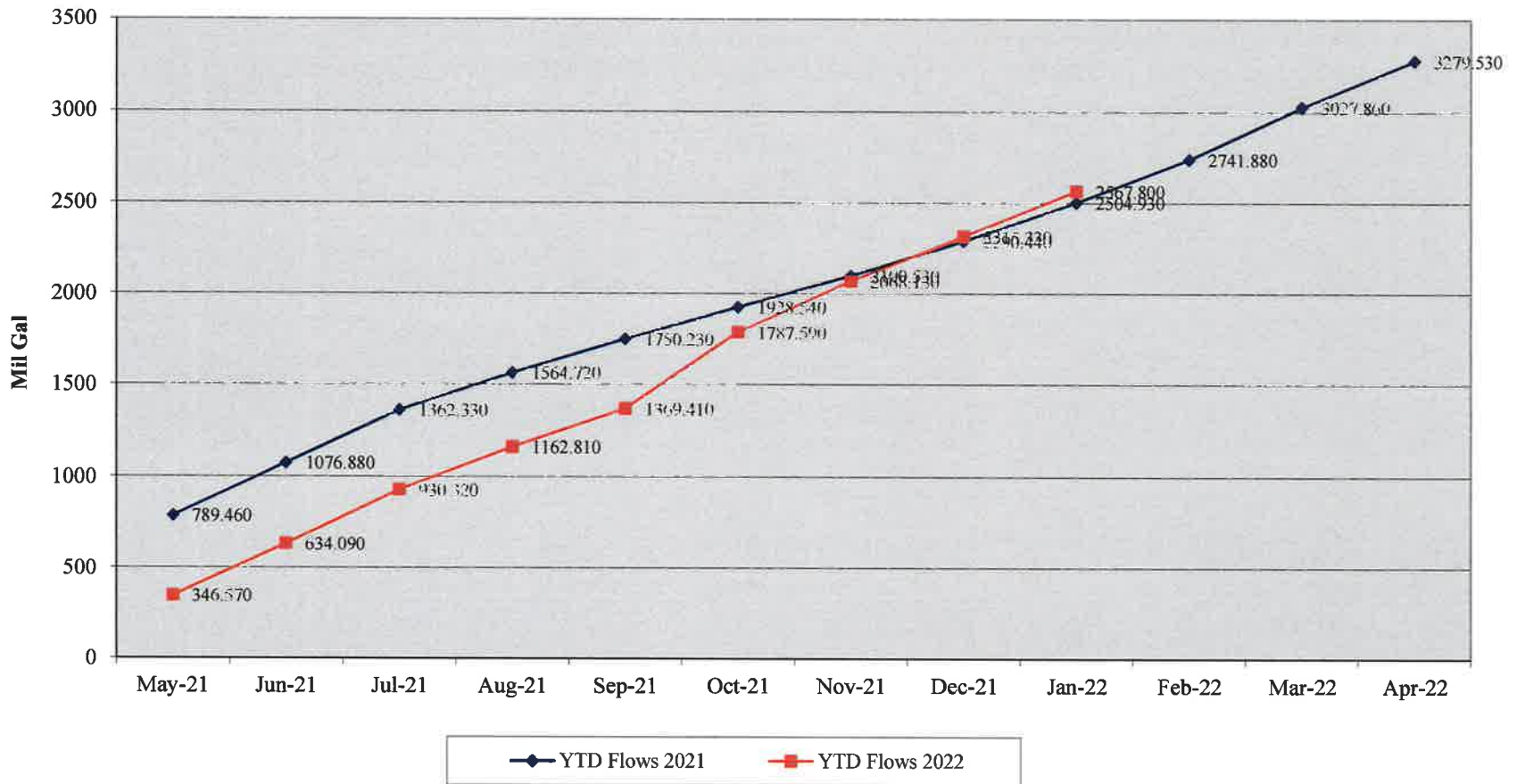
Kankakee River Metropolitan Agency
City of Kankakee
Actual % vs. Estimate FYE 4-30-22



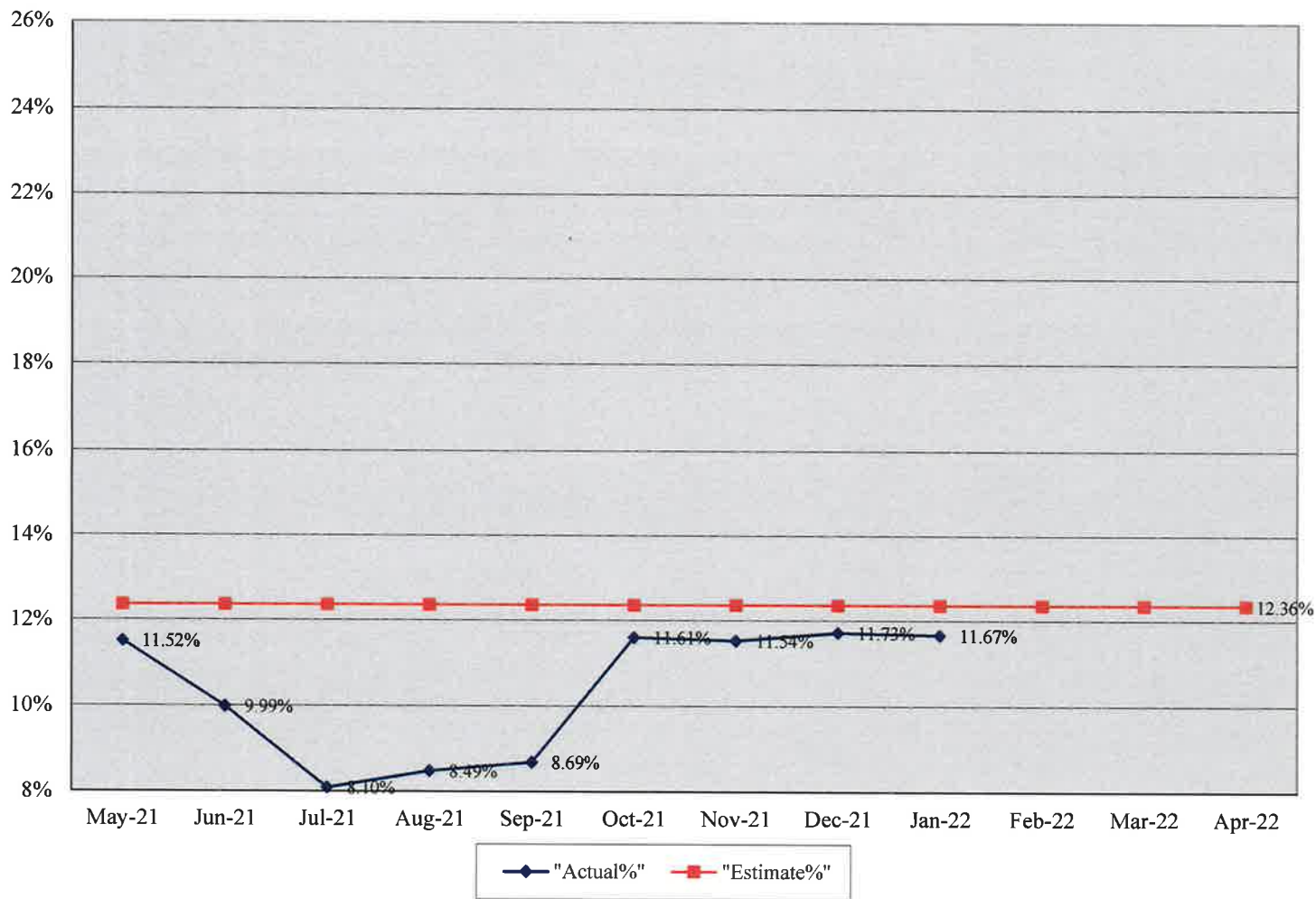
Kankakee River Metropolitan Agency City of Kankakee Monthly % Flows - 2021 vs. 2022



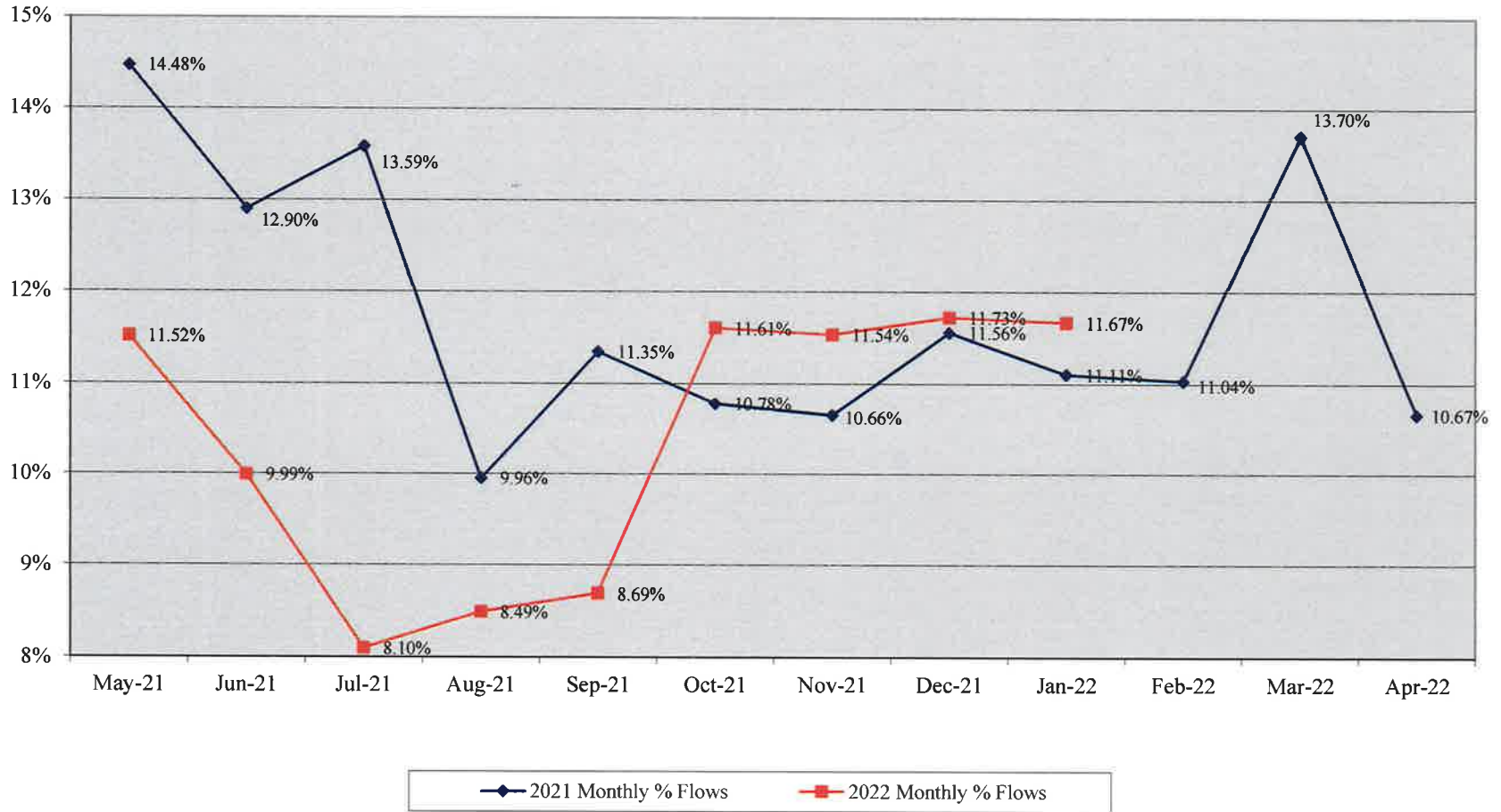
Kankakee River Metropolitan Agency City of Kankakee YTD Flows 2021 vs. 2022



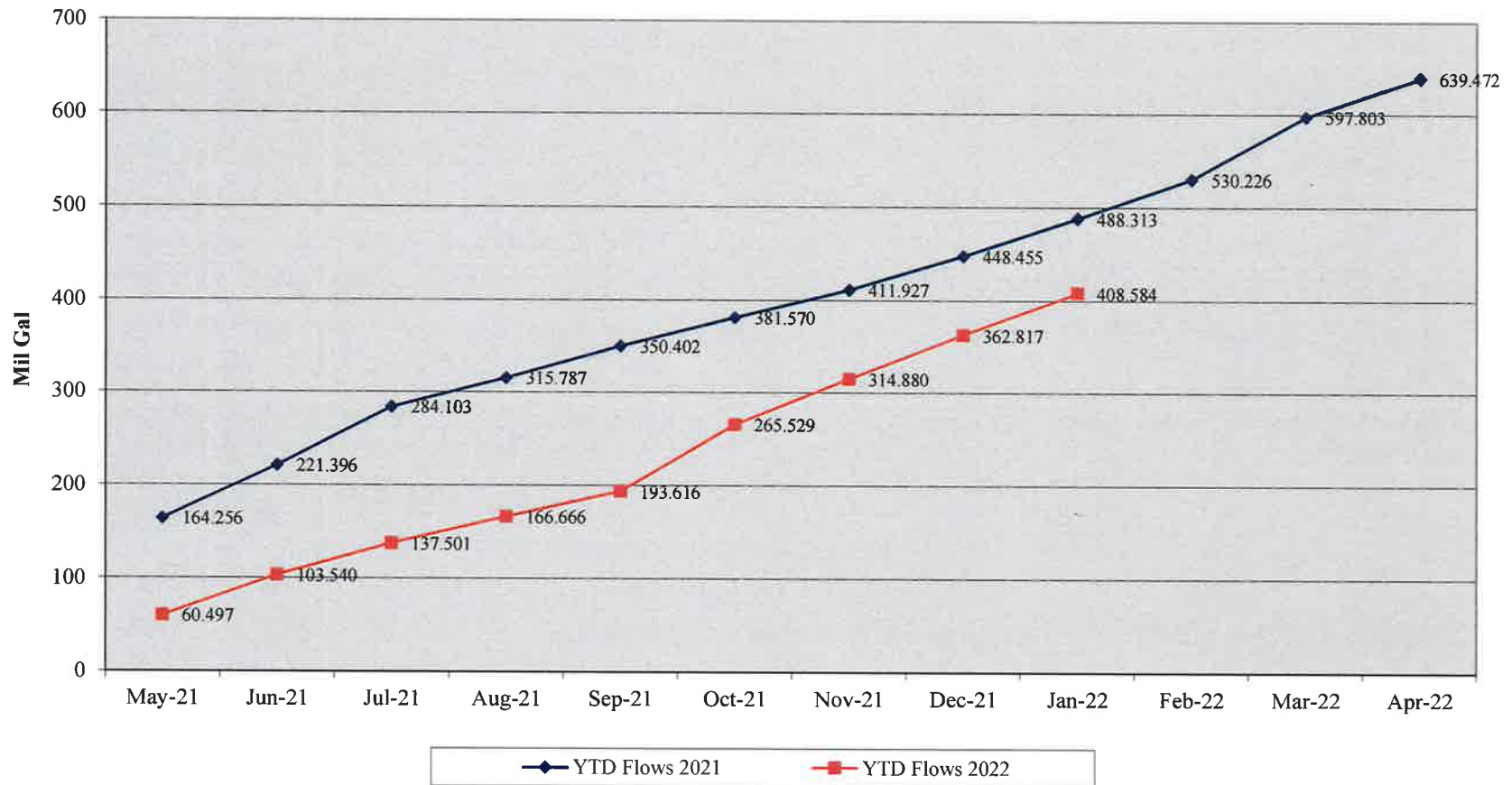
Kankakee River Metropolitan Agency
Village of Bradley
Actual % vs. Estimate FYE 4-30-22



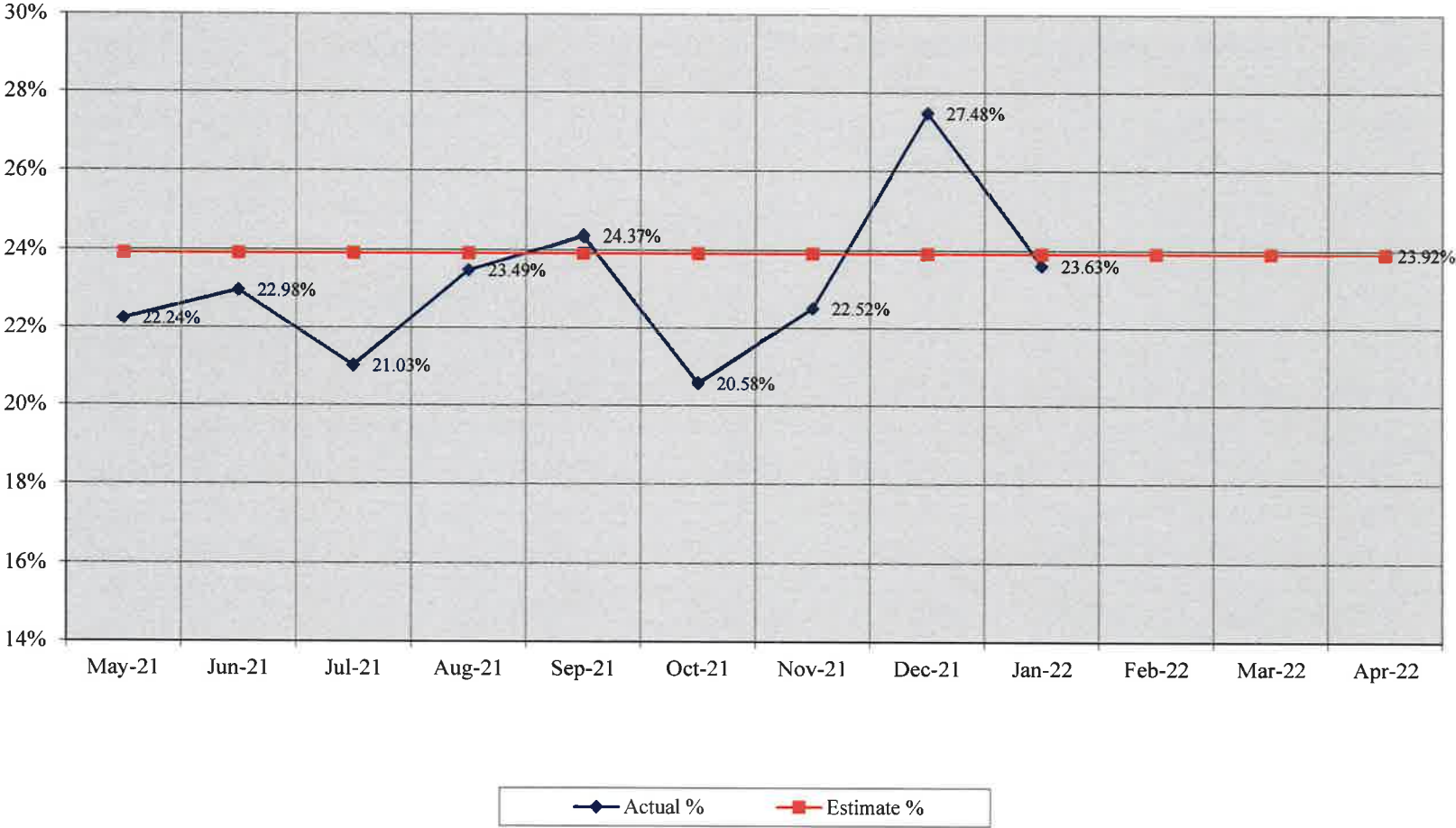
Kankakee River Metropolitan Agency Village of Bradley Monthly % Flows 2021 vs. 2022



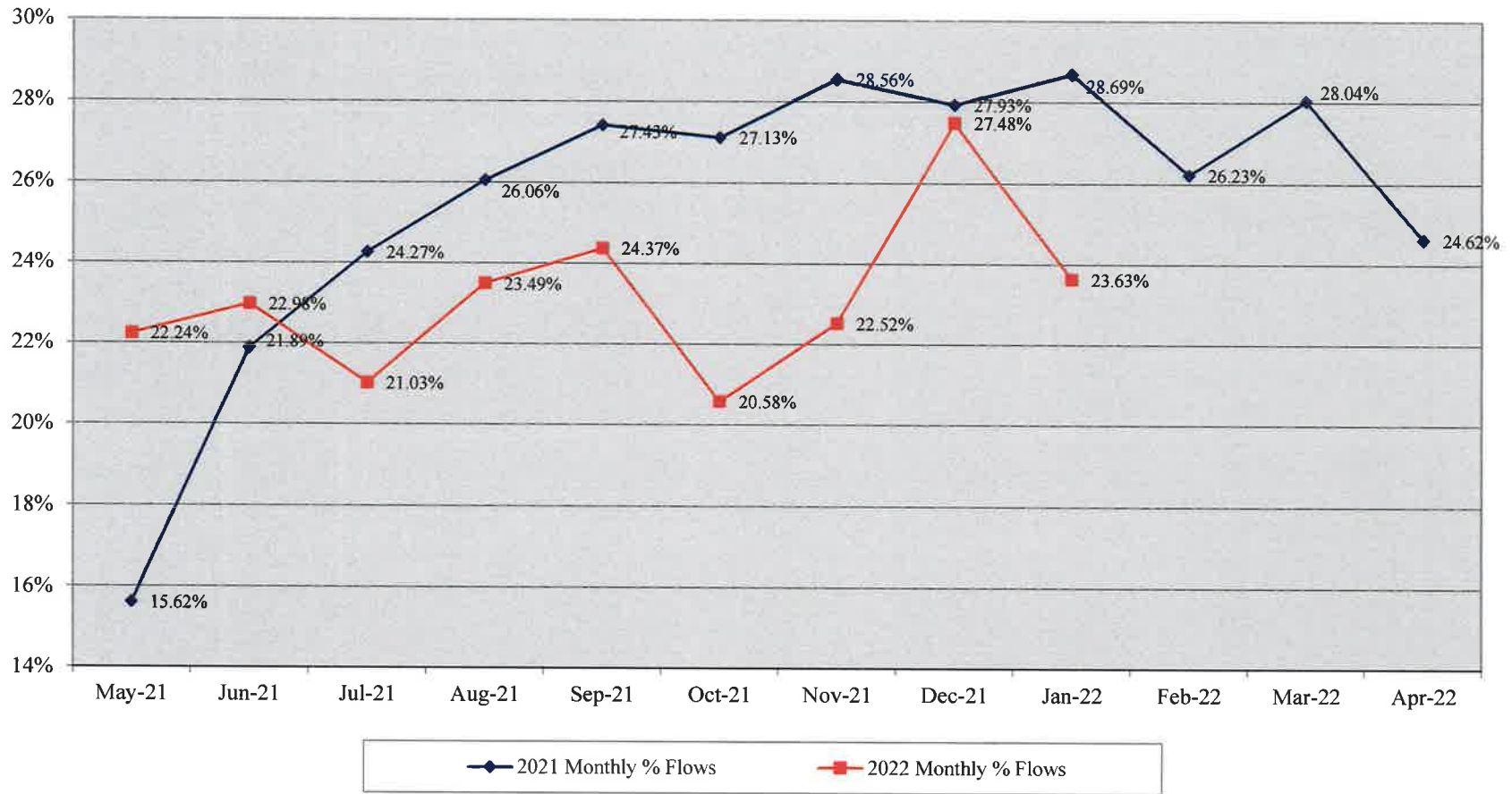
Kankakee River Metropolitan Agency Village of Bradley YTD Flows 2021 vs. 2022



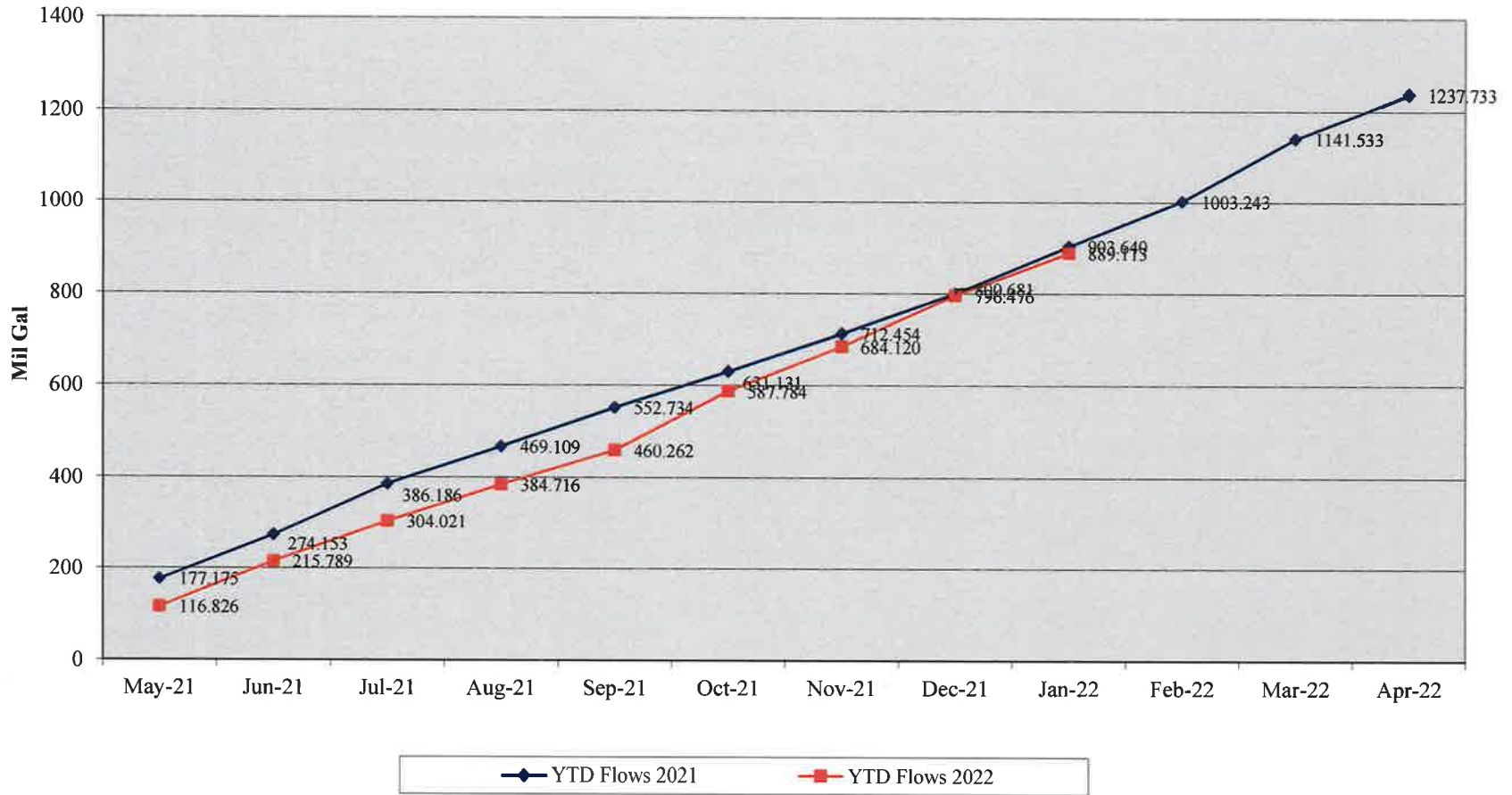
Kankakee River Metropolitan Agency
Village of Bourbonnais
Actual % vs. Estimate FYE 4-30-22



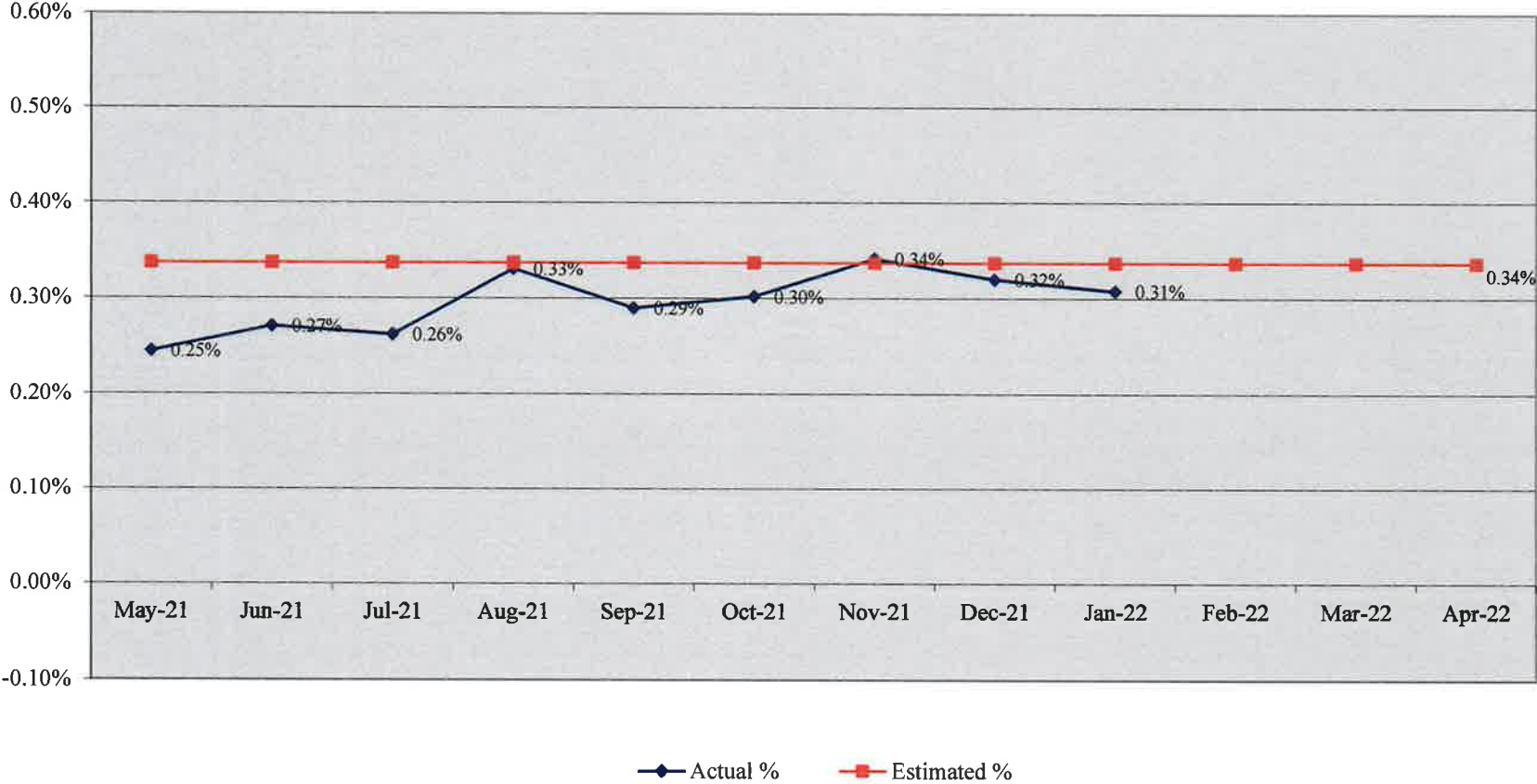
Kankakee River Metropolitan Agency
Village of Bourbonnais
Monthly % Flows - 2021 vs. 2022



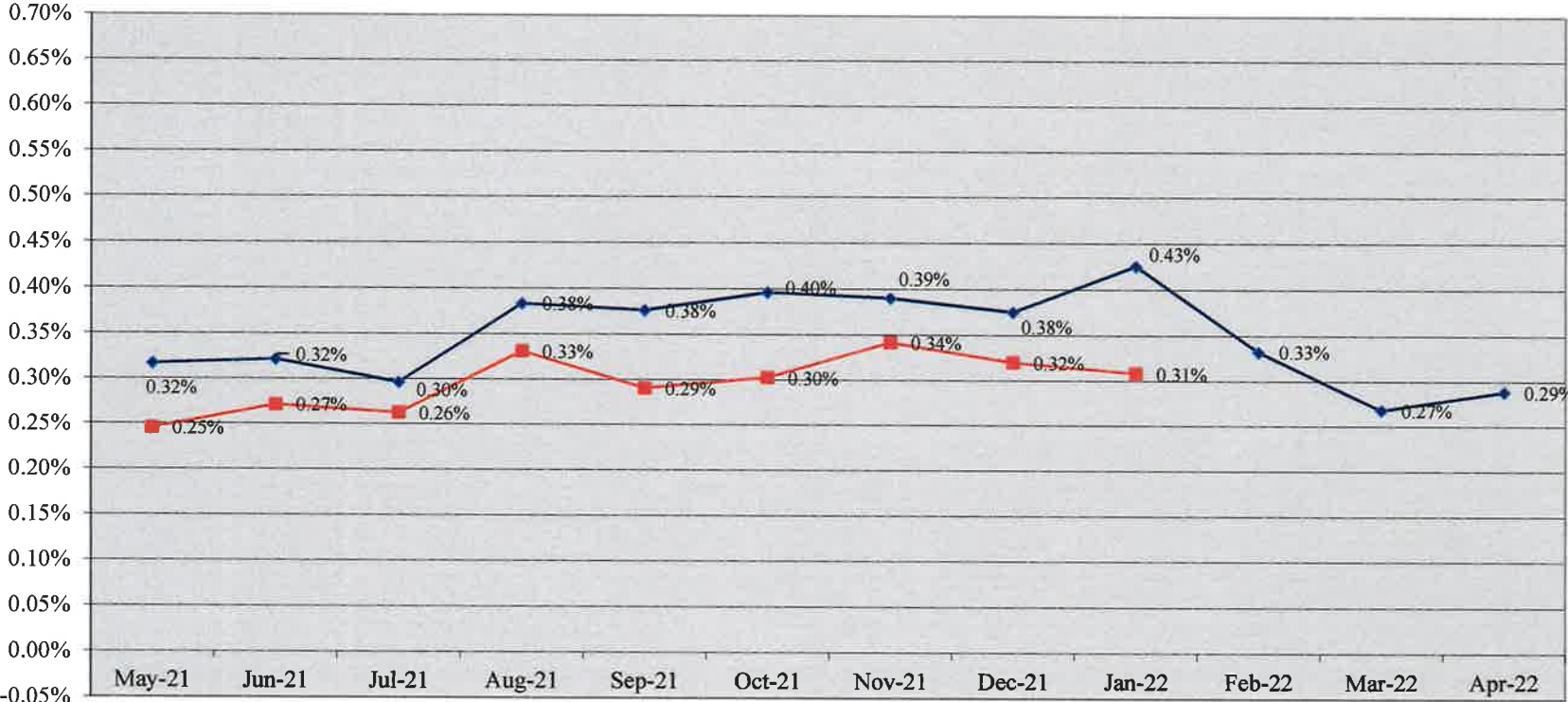
**Kankakee River Metropolitan Agency
Village of Bourbonnais
YTD Flows 2021 vs. 2022**



Kankakee River Metropolitan Agency
Village of Aroma Park
Actual % vs. Estimate FYE 4-30-22



**Kankakee River Metropolitan Agency
Village of Aroma Park
Monthly % Flows - 2021 vs. 2022**



◆ 2021 Monthly % Flows ■ 2022 Monthly % Flows

Kankakee River Metropolitan Agency
Village of Aroma Park
YTD Flows 2021 vs. 2022

