

AGENDA

KANKAKEE RIVER METROPOLITAN AGENCY MEETING Tuesday, March 23, 2021 At 9AM

Location: REMOTE MEETING HELD VIA TELECONFERENCE/VIDEO CONFERENCE

On June 26, 2020, Governor Pritzker issued the fifth Gubernatorial Disaster Proclamation for all counties in the State of Illinois. Due to the COVID-19 health pandemic, Chair Chasity Wells-Armstrong has determined that an in-person meeting is not practical or prudent. As permitted by Public Act 101-0640, this meeting will be held without the physical presence of a quorum at the meeting location.

Directors, staff, participants and the public may attend by phone or video conference using the following:

<https://www.gotomeeting.com>

or dial 1 (872) 240-3212 when prompted enter conference PIN Access Code: 318-571-101

The public will be offered an opportunity to speak during the public comment portion per the agenda below.

- I. **Roll Call**
- II. **Public Comment**
- III. **Approval of Board Minutes**
 - A. February 23, 2021 – Regular Board Meeting
- IV. **Reports**
 - A. Operations & Maintenance Report
 1. Monthly Report
 - B. Executive Director Report
 1. Water, Gas & Electric Use/Cost
 2. Hauled in Waste Summary
 3. Operations Report
 - C. Financial Report
 1. Reports
 2. Hauled in Waste Report
 3. Flows Graphs
 - D. Communications
 1. FOIA Request
- V. **Old Business**
 - A. Blowers Update
 - B. Capacity Analysis
 - C. Republic Service Update
 - D. E-Waste Update
 - E. Designation of new Freedom of Information Officer
- VI. **New Business**
 - A. Economic Alliance Invitation to Invest
 - B. CSL Permit to Construct
 - C. Preliminary Budget for Fiscal Year End April 30, 2022
 - D. Legislative Update
 - E. Approval of SKDO Engagement Letter for accounting service Fiscal Year End April 30, 2022
 - F. Consideration of employee/union grievance regarding employee termination for approval, denial, or resolution by agreement

I. Executive Session

A. Personnel & Probable or Imminent Litigation

VII. Next Meeting

Tuesday, April 27, 2021 (9:00 A.M. via www.gotomeeting.com)

**KANKAKEE RIVER METROPOLITAN AGENCY
MINUTES
February 23, 2021 - 3:00 P.M**

On June 26, 2020, Governor Pritzker issued the fifth Gubernatorial Disaster Proclamation for all counties in the State of Illinois. Due to the COVID-19 health pandemic, Chair Chasity Wells-Armstrong has determined that an in-person meeting is not practical or prudent. As permitted by Public Act 101-0640, this meeting will be held without the physical presence of a quorum at the meeting location.

Directors, staff, participants and the public may attend by phone or video conference using the following:

<https://www.gotomeeting.com>

or dial 1 (872) 240-3212 when prompted enter conference PIN Access Code: 318-571-101

In attendance:

Location: REMOTE MEETING HELD VIA TELECONFERENCE/VIDEO CONFERENCE

Board of Directors:

Mayor Chasity Wells-Armstrong, City of Kankakee
Mayor Paul Schore, Village of Bourbonnais
Mayor Brian Stump, Village of Aroma Park
Alderman Carl Brown, City of Kankakee
Elizabeth Kubal, Representative, City of Kankakee
Marc Wakat, Representative, City of Kankakee

Administration:

Dave Tyson, KRMA Executive Director
Karen Benson, Smith, Koelling, Dykstra & Ohm, P.C.

Attorney:

Neal Smith, Robbins Schwartz

KRMA Staff:

Arthur Strother, Superintendent
Dustin Scheppler, Asst. Superintendent, Operations
Melanie Gossett, Asst. Superintendent, Technical Services

Other:

Dan Small, Strand Associates

Chairperson Mayor Wells-Armstrong called the meeting to order.

I. **Roll Call**

Roll Call was taken. All Board members were present except for Dir Robert Romo via gotomeeting.com.

II. **Public Comment**

None

III. **Approval of Board Minutes**

A. **January 26, 2021 – Regular Board Meeting** – Motion to approve the January 26, 2021 Regular Board Meeting minutes was made by: Dir. Wakat and seconded by Dir Brown. All board member present voted in favor. Motion Carries.

IV. **Reports**

A. **Operations & Maintenance Report**

1. **Monthly Report**

Art presented the Monthly Operations Report (MOR). Art discussed the chart within Attachment A stating this chart will display the plant performance month by month regarding TSS, BOD, and NH3-N (Ammonia). This chart will give everyone better clarity on the plant's needs. Art also stressed his concern about the plant capacity/revenue. Dir Schore asked, what was KRMA'S

capacity prior to the renovation that happened with the plant. Art answered, 21,150 lbs. is what the plant was designed for in the beginning. After the renovation, the plant increased to 28,000 based off the data information Strand Associates received from the industries and each community. We are currently at 100% of the 28,000. Dir Schore ask what's the difference between the loads that's coming in today compared to what we did before? Art responded, lots of things have changed, the growth of CSL, Newton County, other industries, and the community. Newton County was not even calculated when we conducted the renovation. Now, we need to address the changes that weren't in the plan design for the 2011 plant increase. Dir Wakat asked, if the industries pretreat their loadings, how would that help decrease our loadings? Art stated, BASF and DOW were granted the ability to send straight to us without pretreatment. Once CSL starts their pretreatment, that will lower their loadings. Dan gave figures of increase in BASF without pretreatment and decrease in CSL with pretreatment/plant increase. Dan also stated that the industrial growth has taken up all the extra industrial reserve and anticipated residential growth. Plus, CSL has high ammonia concentration. BOD and ammonia loads are really stressing the KRMA facility and its operations. Ammonia limits that are in the current permit, were not in place prior to the new issued permit, which is why Newton County was entertained years ago. Also, it was a revenue source, however, now that ammonia limits are in the current permit is why we are having these issues. Dir Stump asked, what capacity are you looking to increase to? Dan responded, "if you continue taking Newton County loadings, you're looking at an increase from 28,000 to 41,289 lbs. per day; if you stop taking Newton County loadings then KRMA would not need to expand at this time, however, with the anticipated growth of the industries and residential area you will still need to expand." There was ongoing discussion as to rather cut back on Newton County loads, stop taking Newton County loads, setting up meeting times to meet with Newton County to see what their future expectations for the usage of KRMA, and how the revenue would affect the municipalities.

B. Executive Director Report

1. Water, Gas & Electric Use/Cost

Exec. Dir. Dave Tyson presented the monthly utility sheets. Exec Dir Tyson stated we are still having trouble with Aqua reading the north meter; however, we are still in line where we should be. MidAmerican bill is slightly higher due to the generator being down. Generator should be fixed by mid-March.

2. Hauled In Waste Summary

Exec. Dir. Tyson pointed out our Hauled-In Waste was good for the month of January 2021.

3. Operations Report

Exec Dir Dave Tyson stated we have some personnel issues that will be discussed in executive session. Also, our kickoff meeting with Atlas Copco is at 10am, February 24, 2021. We are still looking for Atlas Copco to start sometime in March 2021.

C. Financial Report

1. Reports

Karen Benson presented the financial report stating the Statement of Net Position is still looking fairly strong; however, we do have some loan debt scheduled to come out in February 2021. Statement of Revenue & Expenses payroll is \$17,000 over our budgeted versus our actual budget payroll. However, on a yearly basis, payroll is trending well. Repairs and maintenance were tight for the month; however, we are still within our YTD budget. Change in net position is over our actual budget.

2. Hauled In Waste Report

None

3. Flows Graphs

Karen Benson presented the flow graphs stating they are all in trend.

D. Communications

None.

V. Old Business

A. Blowers Update

Exec Dir Tyson stated we have our kickoff meeting with Atlas Copco February 24, 2021. We will send out report with the breakdown of the meeting.

B. **Capacity Analysis**

Exec Dir Tyson stated we discussed under MOR. KRMA will have a more detailed report next month.

C. **2021 Board Meeting Dates and Times**

Exec Dir Tyson stated we are looking to move all remaining board meeting dates, starting with March 2021 to the fourth Tuesday at 9am and the Agenda meeting to the second Thursday at 9 a.m. Approval to move the 2021 Board and Agenda meetings date and time was approved by Dir Kubal and second by Dir Stump. All board member present voted in favor. Motion Carries.

D. **IEPA Compliance Commitment Agreement**

Exec Dir Tyson presented the IEPA Compliance Commitment Agreement for information purpose only.

E. **WIPFLI Engagement Letter**

Karen Benson presented the WIPFLI Engagement Letter for the year end auditor. They are a local firm. Dir Schore stated next year he would like get Referral for Proposal. Motion to approve WIPFLI Engagement Letter was made by Dir Schore and second by Dir Stump. All board member present voted in favor. Motion Carries.

VI. **New Business**

A. **Approval to BID out KRMA Electric Supplier**

Exec Dir Tyson stated KRMA would like to bid out our Electric Supplier to see if KRMA is getting the best quotes. Motion to approve to bid out KRMA Electric Supplier was made by Dir Schore and second by Dir Stump. All board members present voted in favor. Motion Carries.

VII. **Executive Session**

Motion to go into Executive Session to discuss Personnel, and probable or imminent litigation pursuant to Sections 2(C)(1) of the open meetings act, was made by: Dir. Brown and seconded by: Dir. Stump. Motion carried.

Roll call was taken, and all Board Members were present except for Dir Robert Romo.

The Board went into Executive Session to discuss Personnel and probable or imminent litigation.

Motion to return to Open Session was made by: Dir. Schore and seconded by: Dir. Brown. Motion carried.

Roll call was taken, and all Board Members were present.

With the Board back in open session, there was no motion.

VIII. **Next Meeting**

Next Regular Board Meeting- **Tuesday, March 23, 2021 (9:00 A.M. via gotomeeting.com)**

Motion to Adjourn was made by: Dir. Wakat and seconded by Dir. Kubal. All board members present voted in favor. Motion carried.



Providing Wastewater Treatment to the Kankakee River Valley



Monthly Operations Report

February 2021

KRMA's FEBRUARY HIGHLIGHTS:

In a collaborated effort of the KRMA and the city of Kankakee utility lab service, the Sewer Use Ordinance and enforcement response plan was update and presented to the USEPA Region 5 Division for review.

Bid invitation for chemicals, grounds-keeping, housekeeping, and domestic services was posted. Bids will be accepted until 4:00 pm March 19, 2021. Bids will be publicly open and read aloud at 2:00 pm on Friday, March 26, 2021, in the KRMA board room.

A bit of trivia, Black History Month began as Black History Week, the year 1926.

The month of February, the KRMA staff met all limits of the Illinois Environmental Protection Agency NPDES (National Pollutant Discharge Elimination System) permits, with exception of the ammonia nitrogen permit limits. There were two excursions of the daily ammonia limit due to equipment malfunction. Equipment malfunction addressed, facility currently back in compliance.

1.0 WASTEWATER TREATMENT FACILITY OPERATION

Attachment A Details the monthly operational information for the facility.

2.0 INFLUENT FLOW

Table 2.1 Summarizes total flow and average daily flow to the facility from each municipality.

Attachment B for details of daily flow rates.

Table 2.1
Plant Flows

Municipality	Plant Influent	Kankakee	Bourbonnais	Bradley	Aroma Park
Total Flow (MGD)	379.73	236.95	99.603	41.913	1.264
Daily Average Flow (MGD)	13.56	8.46	3.557	1.497	0.045

3.0 EFFLUENT QUALITY

Table 3.1 Summarizes the effluent quality data.

Table 3.1
Effluent Quality

	IEPA Limits	Effluent Average
Biochemical Oxygen Demand (BOD) – Monthly Average	20 mg/l	7 mg/l
Total Suspended Solids (TSS) - Monthly Average	25 mg/l	15 mg/l
PH	6-9 SU	7.46 SU
Chlorine Residual	0.05 mg/l	N/A
Fecal Coliform	400/100 ml	N/A

ODOR ISSUES:

- There were no odor complaints registered at the KRMA facility in February.
- There were no odor complaints registered at the East Gate site in February.

4.0 PERSONNEL

The Agency would like to Congratulate these KRMA employees for February work anniversaries. Thank you all for being such a valuable and loyal member of our team. Your knowledge, hard work and dedication is greatly appreciated.

Charles (Andy) Summers, O & M Operator Specialist, 1 year

Nick Tucker, O & M Operator Specialist, 1 year

The Agency would like to say “HAPPY BIRTHDAY” to all the employees’ born in February.

Employees’ continue to follow the COVID-19 Warning signs and Safety Tips. One of the best ways to help keep workers healthy is to stay home **except** for necessary outings, and when you do go out for the necessities, there are steps you can take to minimize the risk of spreading illness.

5.0 MAINTENANCE AND REPAIR

Number of Work Orders Closed for the Month:	993
Hours of Scheduled Work Orders Performed:	606.34

6.0 SLUDGE HANDLING

Start Date: 02/01/2021
End Date: 02/28/2021

Gallons of sludge produced and sent to thickening:	2,914,906.00
Gallons of sludge put into storage after thickening:	1,110,000.00
Sludge removed from the plant for land application:	0.00
Sludge remaining in storage as of February 28th:	2,715,000.00

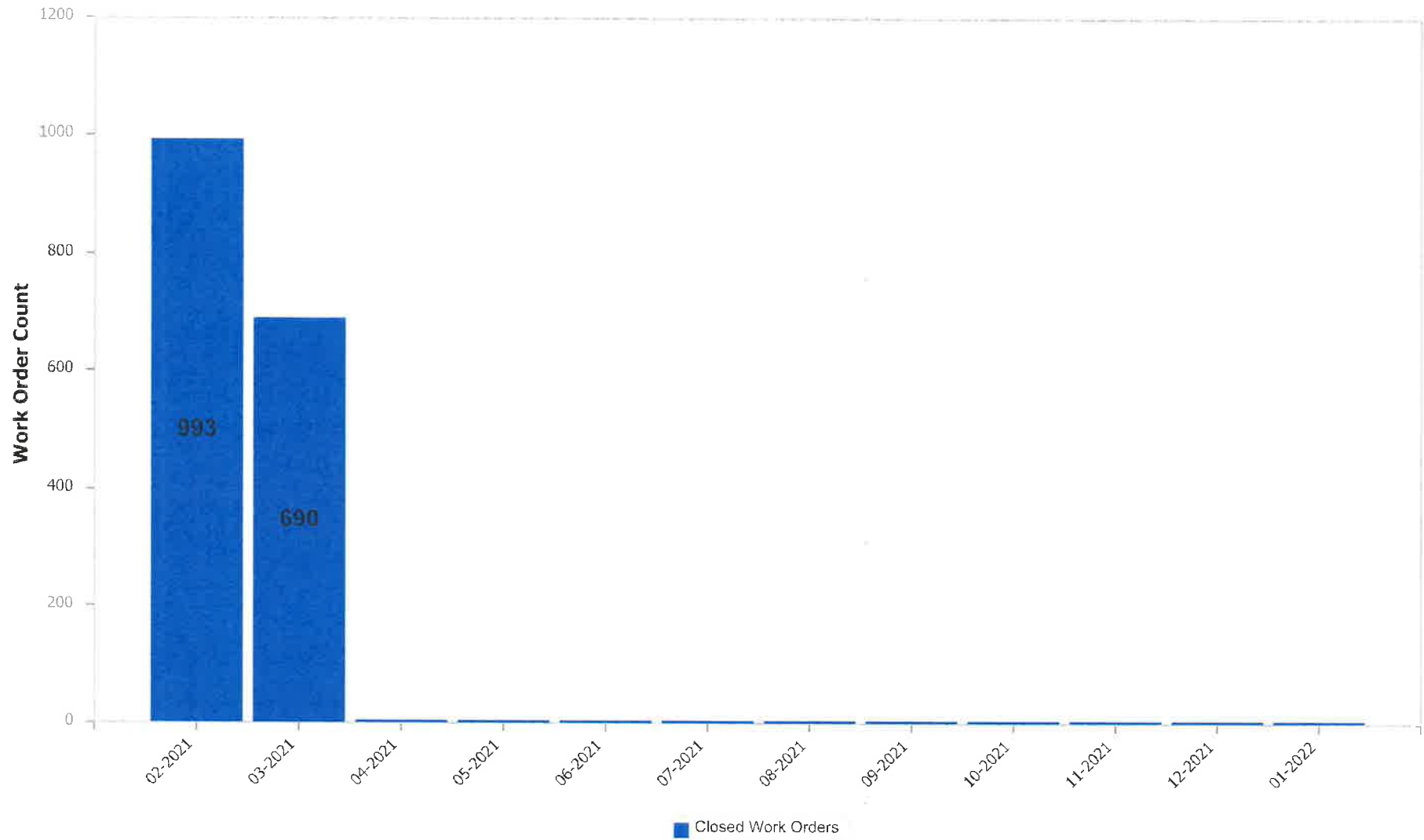
7.0 WATER USAGE

FEBRUARY 2021 (28 DAYS): 33,420 CU FT= 250,000 GALS. = \$2165.41

NUMBER OF DAYS IN THE BILLING CYCLE: 28

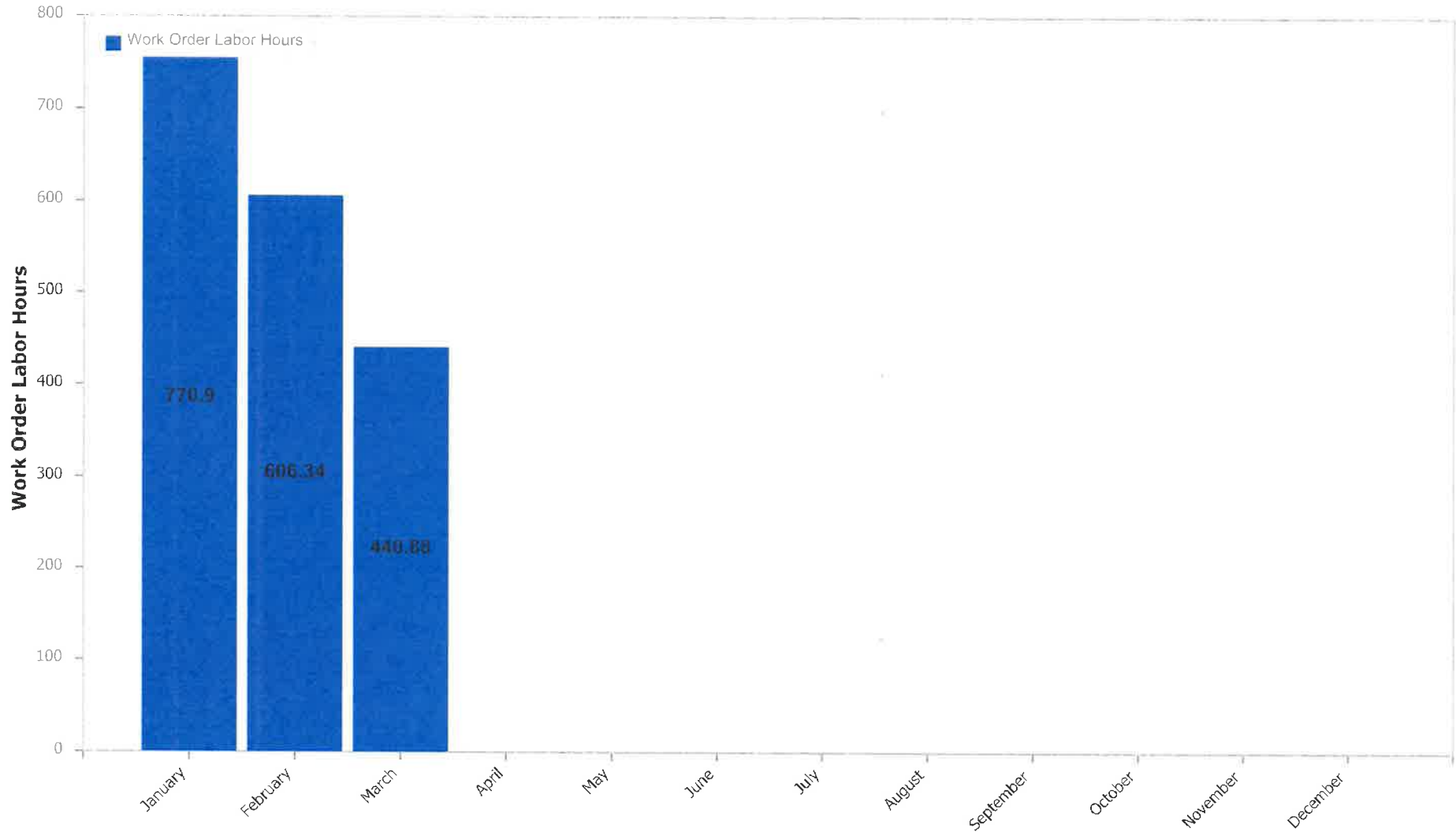
Work Orders Closed By Month

From February, 2021 to January, 2022



Work Order Labor Hours by Month

2021



ATTACHMENT

A

DMR Monthly Report

2/1/2021 to 2/28/2021

Var #	452	159	119	236	454	351	113	237	386
	EFF FLOW	001 Eff pH	FINAL EFF TSS	Weekly ave Eff TSS	EFF TSS	WeeklyAv eEffTSS	EFF-C-BO D	Weekly Ave EffCBOD	EFF C-BOD
Date	MGD	STD UNIT	mg/L	MG/L	LBS/D	LBS/Day	mg/l	MG/L	lbs\day
2/1/2021	10.280	7.56	13		1,115		5		429
2/2/2021	10.450	7.30	14		1,220		6		523
2/3/2021	10.416	7.35	14		1,216		7		608
2/4/2021	10.699	7.35	19		1,695		9		803
2/5/2021	10.716	7.62	7		626				
2/6/2021	10.908		14	14	1,274	1,267	4	6	364
2/7/2021	11.336		9		851		4		378
2/8/2021	10.752	7.52	13		1,166		5		448
2/9/2021	12.190	7.28	15		1,525		6		610
2/10/2021	11.774	7.43	22		2,160		7		687
2/11/2021	11.298	7.54	23		2,167		7		660
2/12/2021	10.709	7.48	20		1,786				
2/13/2021	10.947		10	16	913	1,510	4	6	365
2/14/2021	9.650		11		885		5		402
2/15/2021	9.950	7.55	16		1,328		3		249
2/16/2021	9.930	7.46	13		1,077		7		580
2/17/2021	10.111	7.81	16		1,349		8		675
2/18/2021	10.111	7.53	22		1,855		9		759
2/19/2021	10.025	7.48	9		752				
2/20/2021	9.889		14	14	1,155	1,200	6	6	495
2/21/2021	10.039		11		921		5		419
2/22/2021	11.081	7.47	18		1,663		6		554
2/23/2021	13.518	7.35	26		2,931		11		1,240
2/24/2021	17.218	7.42	16		2,298		5		718
2/25/2021	17.636	7.41	14		2,059		5		735
2/26/2021	17.193	7.20	11		1,577				
2/27/2021	20.490		3	14	513	1,709	5	6	854
2/28/2021	27.080		38		8,582		17		3,839

Minimum	9.650	7.20	3	14	513	1,200	3	6	249
Maximum	27.080	7.81	38	16	8,582	1,709	17	6	3,839
Average	12.371	7.46	15	15	1,666	1,422	7	6	725
Sum	346.396	149.11	431	59	46,659	5,686	156	24	17,395

DMR Monthly Report

2/1/2021 to 2/28/2021

Var #	352	187	191	401	101	450	115	451	455
	WeeklyAverageEffCBOD	001 EFF CL2	FECAL COLI 001	TOTAL INF FLOW	INFLUENT BOD	INF BOD LOAD	INFLUENT TSS	INF TSS	BOD REMOVAL
Date	LBS/Day	mg/L	#/100ml	MGD	mg/L	LBS/D	mg/L	LBS/D	%
2/1/2021				10.28	308	26,406	322	27,607	98
2/2/2021				10.45	300	26,146	246	21,440	98
2/3/2021				10.42	364	31,620	252	21,891	98
2/4/2021				10.70	390	34,800	256	22,843	98
2/5/2021				10.72			268	23,952	
2/6/2021	556			10.91	178	16,193	86	7,824	98
2/7/2021				11.34	224	21,177	173	16,356	98
2/8/2021				10.75	326	29,233	360	32,282	98
2/9/2021				12.19	327	33,244	166	16,876	98
2/10/2021				11.77	340	33,386	218	21,407	98
2/11/2021				11.30	319	30,058	169	15,924	98
2/12/2021				10.71			284	25,365	
2/13/2021	525			10.95	251	22,916	144	13,147	98
2/14/2021				9.65	230	18,511	120	9,658	98
2/15/2021				9.95	240	19,916	88	7,303	99
2/16/2021				9.93	293	24,265	228	18,882	98
2/17/2021				10.11	298	25,129	74	6,240	97
2/18/2021				10.11	374	31,538	312	26,310	98
2/19/2021				10.03			94	7,859	
2/20/2021	527			9.89	263	21,691	204	16,825	98
2/21/2021				10.04	214	17,917	134	11,219	98
2/22/2021				11.08	391	36,134	232	21,440	98
2/23/2021				13.52	361	40,699	292	32,920	97
2/24/2021				17.22	308	44,228	258	37,048	98
2/25/2021				17.64	272	40,007	200	29,417	98
2/26/2021				17.19			102	14,626	
2/27/2021	754			20.49	93	15,892	47	8,032	95
2/28/2021				27.08	73	16,487	363	81,983	77

Minimum	525			9.65	73	15,892	47	6,240	77
Maximum	754			27.08	391	44,228	363	81,983	99
Average	591			12.37	281	27,400	203	21,310	97
Sum	2,361			346.40	6,737	657,595	5,692	596,673	2,327

DMR Monthly Report

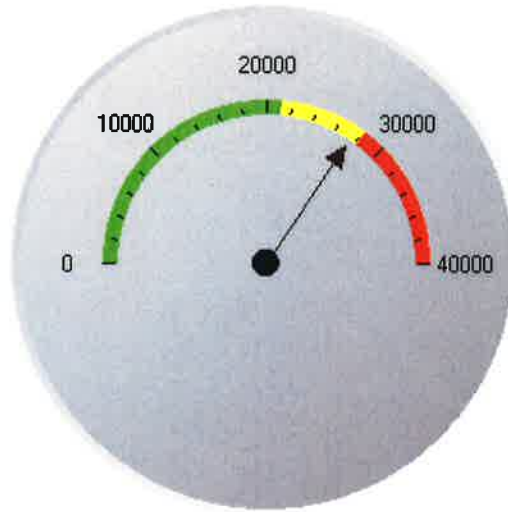
2/1/2021 to 2/28/2021

Var #	456	1040	1041	1042	1043	255	297	953	1023
Date	TSS REMOVAL %	North Effluent DO - SCADA mg/l	South Effluent DO - SCADA mg/l	Daily Average Effluent DO mg/l	Effluent DO weekly average mg/l	FINAL EFF NH3N mg/L	Eff Nitrogen # #/day	Eff_Total Phosphoru s- TP(TNT) mg/l	Effluent Total Nitrogen mg/l
2/1/2021	96	9.28	9.47	9.38		0.07	5.60	0.77	
2/2/2021	94	8.77	8.47	8.62		2.09	182.15	0.21	
2/3/2021	94	8.69	8.26	8.48		3.22	279.72	0.47	
2/4/2021	93	8.36	7.68	8.02		3.60	321.23	0.91	
2/5/2021	97	8.61	7.83	8.22					
2/6/2021	84	9.18	9.28	9.23	8.74				
2/7/2021	95	9.65	9.72	9.69		0.05	4.73		
2/8/2021	96	9.55	9.56	9.56		0.22	20.00	0.29	
2/9/2021	91	9.20	9.00	9.10		2.39	242.98	0.33	
2/10/2021	90	8.85	7.99	8.42		3.43	336.81	0.72	
2/11/2021	86	8.95	8.82	8.89		1.02	96.11	0.92	
2/12/2021	93	9.13	8.64	8.89					
2/13/2021	93	9.24	9.37	9.31	9.12				
2/14/2021	91	9.71	9.87	9.79		0.05	4.02	0.19	12.74
2/15/2021	82	9.58	9.61	9.60		0.48	40.00	1.32	
2/16/2021	94	9.27	9.32	9.30		1.05	86.96	0.98	
2/17/2021	78	9.40	9.10	9.25		0.73	61.47	1.12	
2/18/2021	93	8.86	7.52	8.19		3.64	306.95	0.85	
2/19/2021	90	9.05	8.38	8.72					
2/20/2021	93	8.95	8.88	8.92	9.11				
2/21/2021	92	9.11	9.06	9.09		0.05	4.19	0.62	9.78
2/22/2021	92	8.95	8.66	8.81		1.13	104.43	0.90	
2/23/2021	91	8.94	6.52	7.73		10.10	1,138.68	0.87	
2/24/2021	94	8.91	6.59	7.75		7.70	1,105.71	0.43	
2/25/2021	93	9.02	6.90	7.96		3.89	572.16	0.57	
2/26/2021	89	8.72	7.25	7.99					
2/27/2021	94	8.63	6.58	7.61	8.13				
2/28/2021	90	8.52	7.81	8.17		0.05	11.29	1.00	
Minimum	78	8.36	6.52	7.61	8.13	0.05	4.02	0.19	9.78
Maximum	97	9.71	9.87	9.79	9.12	10.10	1,138.68	1.32	12.74
Average		9.04	8.43	8.74	8.78	2.25	246.26	0.71	11.26
Sum	2,559	253.08	236.14	244.61	35.10	44.96	4,925.16	13.46	22.52

Influent BOD loading Lbs - Monthly AVG

27,400 Lbs./Day

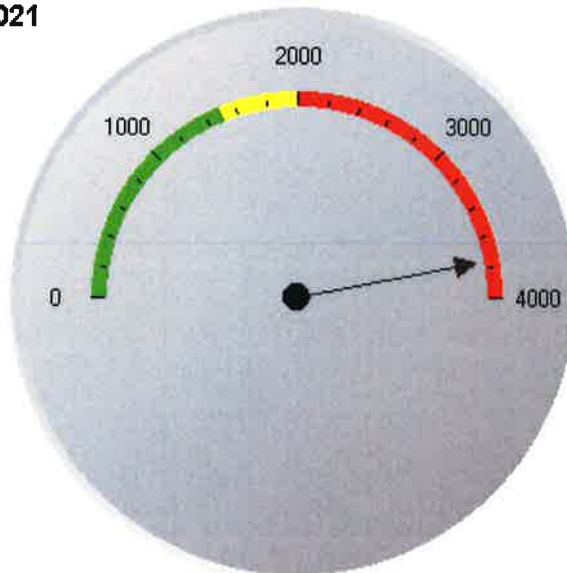
02/01/2021 - 02/28/2021



Influent NH3 loading Lbs - Monthly AVG

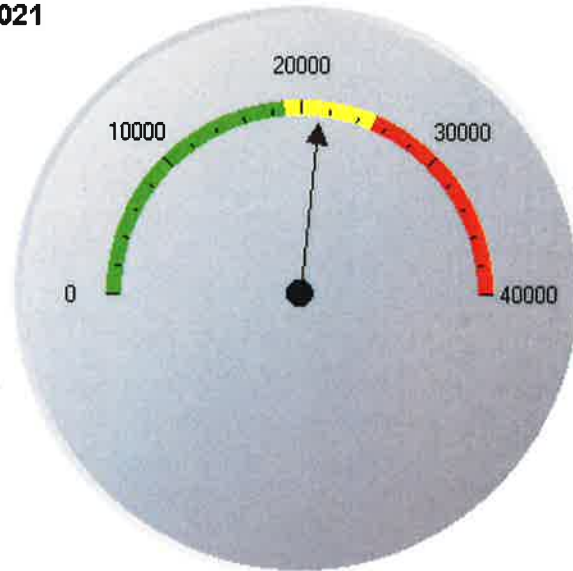
3,759 Lbs./Day

02/01/2021 - 02/28/2021



Influent TSS loading Lbs - Monthly AVG
02/01/2021 - 02/28/2021

21,310 Lbs./Day



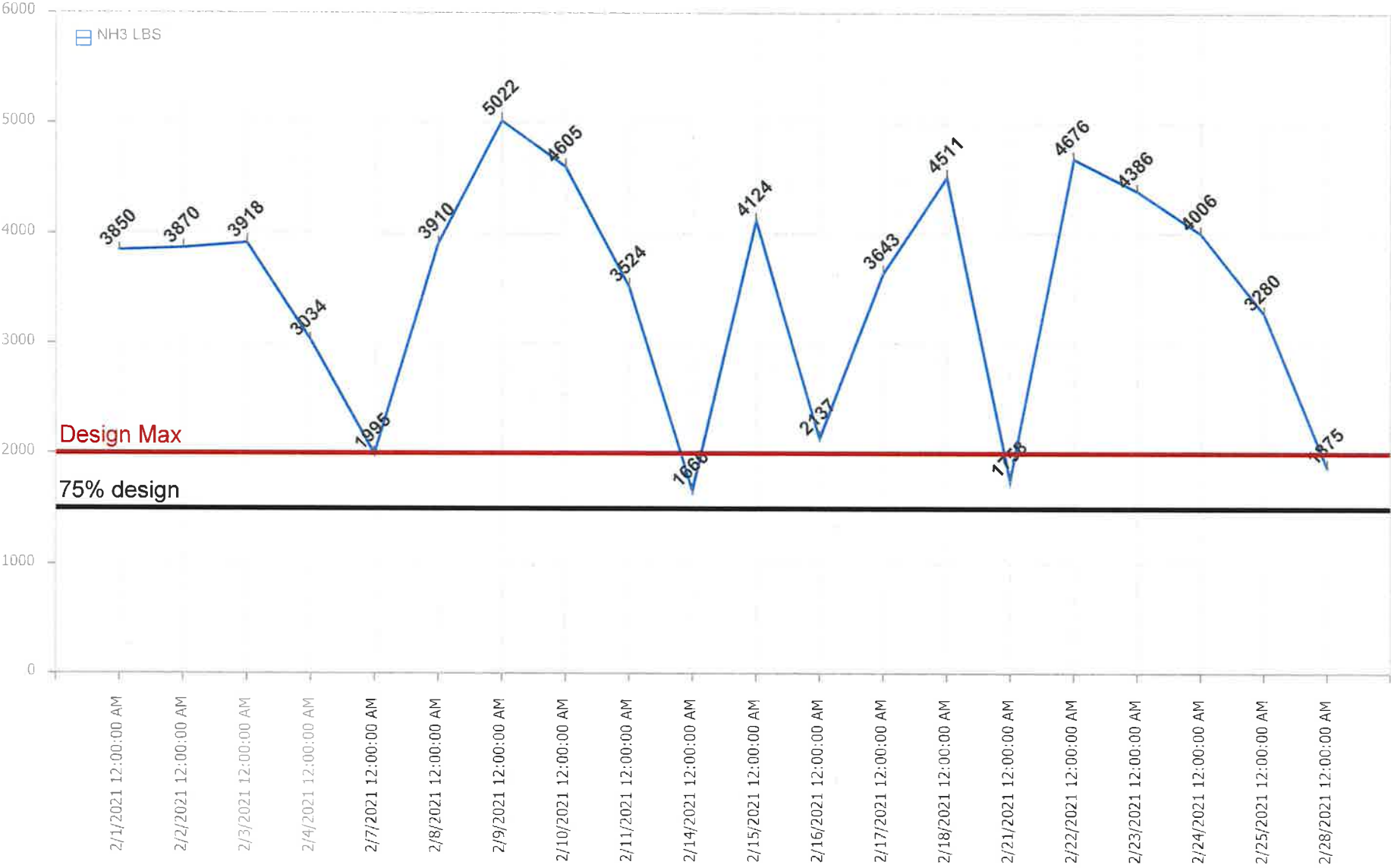
0 to 18900 - Target Loading

18900 to 25200 - Above 75% Threshold

Above 25200

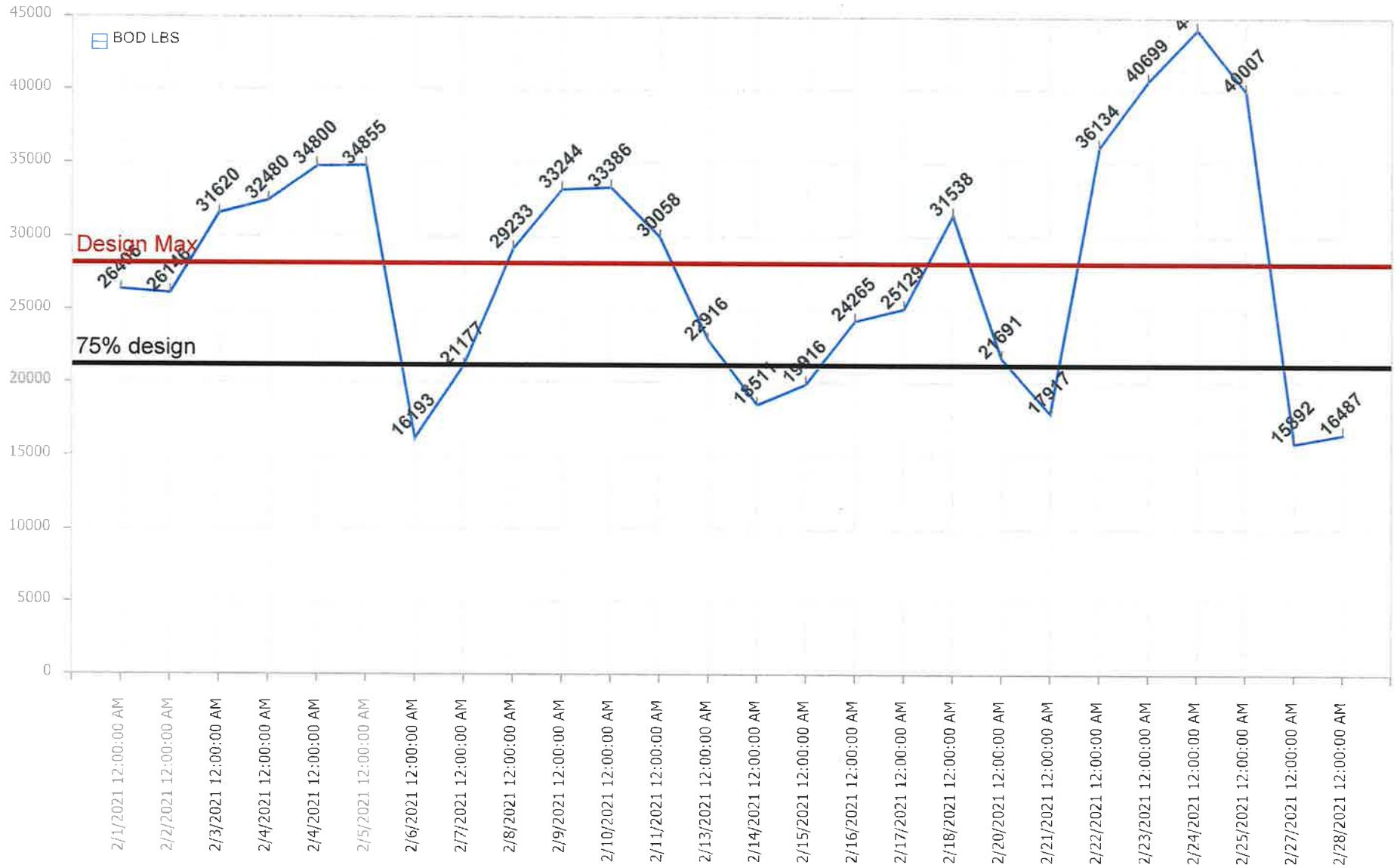
KRMA influent NH3 pounds

Average Lbs. NH3: 3,489.50



KRMA influent BOD pounds

Average Lbs. BOD: 27,881.85



ATTACHMENT

B

ATTACHMENT

C



SAFETY MEETING
March 9, 2021
9:30am & 1:30pm
Agenda

I. Safety Minutes

Review minutes from February 2021

II. Old Business

There were no lost time accidents for the month of February 2021

III. New Business

A. Safety Training

1. Respirator Protection: The Facts
2. In-house Cl₂ & SO₂ procedure and protocol review.

B. Safety Concerns

C. Safety Team Leader Report

Safety Team Leader responsibilities transferred from Shawn Malone to Brian Powers.

D. Open Discussion

Next Meeting: Thursday, April 8, 2021 9:30am & 1:30pm



SAFETY MEETING
February 11, 2021
9:30am & 1:30pm
Minutes

In attendance:

9:30am session:

Melanie Gossett, Facilitator

Dustin Scheppler	Shaun Ownbey	Shawn Malone	Nick Scheppler
John Lund	Mike Arseneau	Nick Tucker	

1:30pm session:

Melanie Gossett, Facilitator

Jack Renchen	Dan Combs	Jim Churney	Ron Haney
Brian Power	Bryan Kennedy	Josh Peters	Max Gossett

Andy Summers

Absent:

Mike Gowler

I. Safety Minutes

Reviewed minutes from January 12, 2021 – Approved.

II. Old Business

There was one lost time accident reported for the month of January 2021.

III. New Business

A. Safety Training

1. Safety video presentation *Blood Borne Pathogens #2524* (CEU 12971= nontechnical 1.0) was viewed.
2. A demonstration was given on how to access/register for the IEPA Wastewater Operators Assigned Training Courses site and how to add renewal training credits.

B. Safety Concerns

No concerns shared.

C. Safety Team Report

No additional concerns mentioned.

D. Open Discussion

1. Per everyone's agreement, the Safety Meeting agenda and minutes will be sent electronically to all operators beginning with March 2021 meeting.
2. Covid vaccinations are available, but must be requested. After requesting, if all appointments are full, the best time to check back is on Friday mornings.
3. Operator performance reviews will be conducted soon. Dustin will notify you of your day/time.
4. A discussion was held in regards to wastewater license testing and the current protocol.

Next Meeting: **Tuesday, March 9, 2021**
9:30am & 1:30pm

ATTACHMENT

D

FIELD CALIBRATION SHEET

COMPANY: KRMA

CITY: KANKAKEE

FLOW METER MODEL: Siemens Hydro Ranger #2

INFLUENT March 3rd, 2021

PRIMARY DEVICE: Flume

FLOW: 0-73.425 MGD

MEASURING DEVICE: Ultrasonic

CHECK POINTS:

LEVEL? YES

FREE FLOWING? Yes

TURBULENCE? NO

BLOCKAGE? NO

SURFACE BUILD-UP? No

HEAD MEASURING DEVICE MOUNTED PROPERLY? YES

BLOCKAGE IN HEAD MEASURING DEVICE? NO

IS FLOW METER PROGRAMMED CORRECTLY? YES

CALIBRATION:

NOTE: THE ZERO POINT FOR MEASURING MUST BE LEVEL WITH THE WEIR CREST OR FLUME ZERO POINT:

A) IF POSSIBLE, CUT-OFF FLOW & SET LEVEL TO 0.000FT
LEVEL BEFORE:

LEVEL AFTER:

B) IF FLOW CANNOT BE CUT-OFF, ADJUST LEVEL ON METER TO MEASURED
POINT:

LEVEL BEFORE: Target Set 30MGD AS Found 29.988 MGD

LEVEL AFTER: 29.988 MGD

LEVEL FLOW CONVERSION CHECK:

WITH FLOW THRU PRIMARY DEVICE, CHECK LEVEL TO FLOW CONVERSION WITH
HANDBOOK OR PRIMARY DEVICE DATA SHEET: YES/OK

TOTALIZER CHECK:

WITH FLOW GOING THRU PRIMARY DEVICE, VERIFY THAT TOTAL FLOW IS
INTEGRATING PROPERLY USING TIMED RATE METHOD: YES/OK

CALIBRATED BY: BRIAN SCHEPPLER

DATE: 3/3/2021

BC SYSTEMS INC.
2778 N. 4000 E. ROAD
BOURBONNAIS ILLINOIS 60914
PHONE: 1-815-671-1257
FAX: 1-815-802-0219

FIELD CALIBRATION SHEET

COMPANY: KRMA

CITY: KANKAKEE/RIVERLANE

FLOW METER MODEL: Isco Signature

INFLUENT March 3rd, 2021

PRIMARY DEVICE: PHARSHAL

FLOW: 0-516 GPM 0-13.20 IN

MEASURING DEVICE: ULTRASONIC

CHECK POINTS:

LEVEL? YES

FREE FLOWING? Yes

TURBULENCE? NO

BLOCKAGE? No

SURFACE BUILD-UP? Yes

HEAD MEASURING DEVICE MOUNTED PROPERLY? Yes

BLOCKAGE IN HEAD MEASURING DEVICE? NO

IS FLOW METER PROGRAMMED CORRECTLY? Yes

CALIBRATION:

NOTE: THE ZERO POINT FOR MEASURING MUST BE LEVEL WITH THE WEIR CREST OR FLUME ZERO POINT:

A) IF POSSIBLE, CUT-OFF FLOW & SET LEVEL TO 0.000FT
LEVEL BEFORE:

LEVEL AFTER:

B) IF FLOW CANNOT BE CUT-OFF, ADJUST LEVEL ON METER TO MEASURED
POINT

C) LEVEL BEFORE: TARGET SET 24.125 Level 24.512"

LEVEL AFTER: 24.127"

LEVEL FLOW CONVERSION CHECK:

WITH FLOW THRU PRIMARY DEVICE, CHECK LEVEL TO FLOW CONVERSION WITH
HANDBOOK OR PRIMARY DEVICE DATA SHEET: Yes

TOTALIZER CHECK:

WITH FLOW GOING THRU PRIMARY DEVICE, VERIFY THAT TOTAL FLOW IS
INTEGRATING PROPERLY USING TIMED RATE METHOD: Yes

CALIBRATED BY: Brian Scheppler

DATE: 3/3/2021

BC SYSTEMS INC.
2778 N. 4000 E. ROAD
BOURBONNAIS ILLINOIS 60914
PHONE: 1-815-671-1257
FAX: 1-815-802-0219

FIELD CALIBRATION SHEET

COMPANY: KRMA

CITY: KANKAKEE

FLOW METER MODEL: Siemens Hydro Ranger #1

Influent March 3rd, 2021

PRIMARY DEVICE: Flume

FLOW: 0-73 MGD

MEASURING DEVICE: Ultrasonic

CHECK POINTS:

LEVEL? YES

FREE FLOWING? Yes

TURBULENCE? Yes

BLOCKAGE? NO

SURFACE BUILD-UP? No

HEAD MEASURING DEVICE MOUNTED PROPERLY? YES

BLOCKAGE IN HEAD MEASURING DEVICE? NO

IS FLOW METER PROGRAMMED CORRECTLY? YES

CALIBRATION:

NOTE: THE ZERO POINT FOR MEASURING MUST BE LEVEL WITH THE WEIR CREST OR FLUME ZERO POINT:

A) IF POSSIBLE, CUT-OFF FLOW & SET LEVEL TO 0.000FT

LEVEL BEFORE:

LEVEL AFTER:

B) IF FLOW CANNOT BE CUT-OFF, ADJUST LEVEL ON METER TO MEASURED POINT:

LEVEL BEFORE: Target Set 30.0 MGD As Found 30.012 MGD LEVEL AFTER: 30.012MGD

LEVEL FLOW CONVERSION CHECK:

WITH FLOW THRU PRIMARY DEVICE, CHECK LEVEL TO FLOW CONVERSION WITH HANDBOOK OR PRIMARY DEVICE DATA SHEET: YES/OK

TOTALIZER CHECK:

WITH FLOW GOING THRU PRIMARY DEVICE, VERIFY THAT TOTAL FLOW IS INTEGRATING PROPERLY USING TIMED RATE METHOD: YES/OK

CALIBRATED BY: BRIAN SCHEPPLER

DATE: 3/3/2021

BC SYSTEMS INC.
2778 N. 4000 E. ROAD
BOURBONNAIS ILLINOIS 60914
PHONE: 1-815-671-1257
FAX: 1-815-802-0219

FIELD CALIBRATION SHEET

COMPANY: KRMA

CITY: KANKAKEE/BROOKMONT

FLOW METER MODEL: ISCO Signature

INFLUENT March 3rd, 2021

PRIMARY DEVICE: PHARSHAL

FLOW: 0-516 GPM 0-13.20 IN

MEASURING DEVICE: ULTRASONIC

CHECK POINTS:

LEVEL? YES

FREE FLOWING? YES

TURBULENCE? NO

BLOCKAGE? No

SURFACE BUILD-UP? NONE

HEAD MEASURING DEVICE MOUNTED PROPERLY?

BLOCKAGE IN HEAD MEASURING DEVICE? NO

IS FLOW METER PROGRAMMED CORRECTLY? Yes

CALIBRATION:

NOTE: THE ZERO POINT FOR MEASURING MUST BE LEVEL WITH THE WEIR CREST OR FLUME ZERO POINT:

A) IF POSSIBLE, CUT-OFF FLOW & SET LEVEL TO 0.000FT

LEVEL BEFORE:

LEVEL AFTER:

B) IF FLOW CANNOT BE CUT-OFF, ADJUST LEVEL ON METER TO MEASURED POINT:

LEVEL BEFORE: Target 24.125" Level 24.149

LEVEL AFTER: 24.125"

LEVEL FLOW CONVERSION CHECK:

WITH FLOW THRU PRIMARY DEVICE, CHECK LEVEL TO FLOW CONVERSION WITH HANDBOOK OR PRIMARY DEVICE DATA SHEET: Yes

TOTALIZER CHECK:

WITH FLOW GOING THRU PRIMARY DEVICE, VERIFY THAT TOTAL FLOW IS INTEGRATING PROPERLY USING TIMED RATE METHOD: Yes

CALIBRATED BY: Brian Scheppler

DATE 3/3/2021

BC SYSTEMS INC.
2778 N. 4000 E. ROAD
BOURBONNAIS ILLINOIS 60914
PHONE: 1-815-671-1257
FAX: 1-815-802-0219

FIELD CALIBRATION SHEET

COMPANY: KRMA

CITY: BRADLEY/ RIVER DRIVE

FLOW METER MODEL: Isco Signature

INFLUENT March 3rd, 2021

PRIMARY DEVICE: PHARSHAL

FLOW: 0-21.36

MEASURING DEVICE: ULTRASONIC

CHECK POINTS:

LEVEL? YES

FREE FLOWING? NO

TURBULENCE? Yes

BLOCKAGE? NO

SURFACE BUILD-UP? NONE

HEAD MEASURING DEVICE MOUNTED PROPERLY? YES

BLOCKAGE IN HEAD MEASURING DEVICE? NO

IS FLOW METER PROGRAMMED CORRECTLY? YES

CALIBRATION:

NOTE: THE ZERO POINT FOR MEASURING MUST BE LEVEL WITH THE WEIR CREST OR FLUME ZERO POINT:

A) IF POSSIBLE, CUT-OFF FLOW & SET LEVEL TO 0.000FT

LEVEL BEFORE:

LEVEL AFTER:

B) IF FLOW CANNOT BE CUT-OFF, ADJUST LEVEL ON METER TO MEASURED POINT:

LEVEL BEFORE: Target 11" Level reading 10.985"

LEVEL AFTER: 10.985"

LEVEL FLOW CONVERSION CHECK:

WITH FLOW THRU PRIMARY DEVICE, CHECK LEVEL TO FLOW CONVERSION WITH HANDBOOK OR PRIMARY DEVICE DATA SHEET: YES/OK

TOTALIZER CHECK:

WITH FLOW GOING THRU PRIMARY DEVICE, VERIFY THAT TOTAL FLOW IS INTEGRATING PROPERLY USING TIMED RATE METHOD: YES/OK

CALIBRATED BY: BRIAN SCHEPPLER

DATE: 3/3/2021

BC SYSTEMS INC.
2778 N. 4000 E. ROAD
BOURBONNAIS ILLINOIS 60914
PHONE: 1-815-671-1257
FAX: 1-815-802-0219

FIELD CALIBRATION SHEET

COMPANY: KRMA

CITY: Kankakee Influent

FLOW METER MODEL: Isco Laser Flow

INFLUENT March 5th, 2021

PRIMARY DEVICE: 72" PIPE

FLOW: 0-115 MGD

MEASURING DEVICE:

CHECK POINTS:

LEVEL? YES

FREE FLOWING? Yes

TURBULENCE? NO

BLOCKAGE? NO

SURFACE BUILD-UP? Foam

HEAD MEASURING DEVICE MOUNTED PROPERLY? YES

BLOCKAGE IN HEAD MEASURING DEVICE? NO

IS FLOW METER PROGRAMMED CORRECTLY? YES

CALIBRATION:

NOTE: THE ZERO POINT FOR MEASURING MUST BE LEVEL WITH THE WEIR CREST OR FLUME ZERO POINT:

A) IF POSSIBLE, CUT-OFF FLOW & SET LEVEL TO 0.000FT

LEVEL BEFORE:

LEVEL AFTER:

B) IF FLOW CANNOT BE CUT-OFF, ADJUST LEVEL ON METER TO MEASURED POINT:

LEVEL BEFORE: Target level 47.0" As found 47.161"

LEVEL AFTER: 47.161"

LEVEL FLOW CONVERSION CHECK:

WITH FLOW THRU PRIMARY DEVICE, CHECK LEVEL TO FLOW CONVERSION WITH HANDBOOK OR PRIMARY DEVICE DATA SHEET: YES/OK

TOTALIZER CHECK:

WITH FLOW GOING THRU PRIMARY DEVICE, VERIFY THAT TOTAL FLOW IS INTEGRATING PROPERLY USING TIMED RATE METHOD: YES/OK

CALIBRATED BY: BRIAN SCHEPPLER

DATE: 3/5/2021

BC SYSTEMS INC.
2778 N. 4000 E. ROAD
BOURBONNAIS ILLINOIS 60914
PHONE: 1-815-671-1257
FAX: 1-815-802-0219

FIELD CALIBRATION SHEET

COMPANY: KRMA

CITY: BOURBONNAIS/New

FLOW METER MODEL: Isco Laser Flow

INFLUENT March 5th, 2021

PRIMARY DEVICE: 36" PIPE

FLOW: 0-21.36 MGD

MEASURING DEVICE:

CHECK POINTS:

LEVEL? YES

FREE FLOWING? Yes

TURBULENCE? NO

BLOCKAGE? NO

SURFACE BUILD-UP? None

HEAD MEASURING DEVICE MOUNTED PROPERLY? YES

BLOCKAGE IN HEAD MEASURING DEVICE? NO

IS FLOW METER PROGRAMMED CORRECTLY? YES

CALIBRATION:

NOTE: THE ZERO POINT FOR MEASURING MUST BE LEVEL WITH THE WEIR CREST OR FLUME ZERO POINT:

A) IF POSSIBLE, CUT-OFF FLOW & SET LEVEL TO 0.000FT

LEVEL BEFORE:

LEVEL AFTER:

B) IF FLOW CANNOT BE CUT-OFF, ADJUST LEVEL ON METER TO MEASURED POINT:

LEVEL BEFORE: Target level 16" As found 16.460"

LEVEL AFTER: 16.460" No adjustments made due to ISCO recommendations

LEVEL FLOW CONVERSION CHECK:

WITH FLOW THRU PRIMARY DEVICE, CHECK LEVEL TO FLOW CONVERSION WITH HANDBOOK OR PRIMARY DEVICE DATA SHEET: YES/OK

TOTALIZER CHECK:

WITH FLOW GOING THRU PRIMARY DEVICE, VERIFY THAT TOTAL FLOW IS INTEGRATING PROPERLY USING TIMED RATE METHOD: YES/OK

CALIBRATED BY: BRIAN SCHEPPLER

DATE: 3/5/2021

BC SYSTEMS INC.
2778 N. 4000 E. ROAD
BOURBONNAIS ILLINOIS 60914
PHONE: 1-815-671-1257
FAX: 1-815-802-0219

ATTACHMENT

E

February 2021 Monthly Pretreatment Sample Analysis (metals, cyanide & VOA) for the permitted industries were a total of **60 samples** and a total of **433 analyses**.

City of Momence/Momence Packing	1 Sample
Gilster-Mary Lee Corporation	7 Samples
Hoffman Transportation, LLC	3 Samples
Liberty Landfill, LLC	9 Samples
Livingston Landfill	4 Samples
Natural Gas & Pipeline Co. of America	3 Samples
Newton County Landfill	11 Samples
Prairie View RDF	4 Samples
Solvay USA Inc.	6 Samples
Tank Cleaning Solutions, LLC	10 Samples
Zutat Feed Solutions	2 Samples

Volumes Received for February 2021 for trucked-in industries.

City of Momence/Momence Packing	168,000 gals	28 loads
Gilster-Mary Lee Corporation	61,000 gals	11 loads
Hoffman Transportation, LLC	15,000 gals	3 loads
Kankakee Recycling & Disposal Facility	0 gals	0 loads
Lake County C&D Landfill	0 gals	0 loads
Laraway Recycling & Disposal Facility	0 gals	0 loads
Liberty 3 LFGTE Plant - Wabash Valley Power Alliance	0 gals	0 loads
Liberty Landfill, LLC	1,387,606 gals	210 loads
Livingston Landfill	166,784 gals	26 loads
Natural Gas & Pipeline Co. of America	30,000 gals	6 loads
Newton County Landfill	913,999 gals	143 loads
Peoria Packing Co.	0 gals	0 loads
Prairie View RDF	25,925 gals	4 loads
Solvay USA Inc.	42,583 gals	8 loads
Tank Cleaning Solutions, LLC	200,029 gals	40 loads
Zutat Feed Solutions	18,000 gals	3 loads
Totals:	3,028,926 gals	482 loads

The KRMA Facility received a total of **85 loads** of septage which totalled **297,800 gallons** for the month of February 2021

KRMA YEARLY UTILITY USAGE - (2021)

	KRMA ELECTRIC ENERGY USE									KRMA WATER USE				
	Total KWH	Days	Total Cost \$/month	Total Cost \$/day	Hydro KWH	Methane KWH	Mid-American KWH	KWH/HR (Avg)	\$/KWH	Gallons	Days	Total Cost \$/Billing Period	Gallons/Day	Total Cost \$/day
JANUARY	923,110	34	\$ 58,146	\$ 1,710	-	0	923,110	1,131	\$ 0.0630	620,000	66	\$ 4,071	9,394	62
FEBRUARY	805,257	28	\$ 67,560	\$ 2,413	-	-	805,257	1,198	\$ 0.0839	250,000	28	\$ 2,165	8,929	77
MARCH	0			#DIV/0!				#DIV/0!	#DIV/0!				#DIV/0!	#DIV/0!
APRIL	0			#DIV/0!				#DIV/0!	#DIV/0!				#DIV/0!	#DIV/0!
MAY	0			#DIV/0!				#DIV/0!	#DIV/0!				#DIV/0!	#DIV/0!
JUNE	0			#DIV/0!				#DIV/0!	#DIV/0!				#DIV/0!	#DIV/0!
JULY	0			#DIV/0!				#DIV/0!	#DIV/0!				#DIV/0!	#DIV/0!
AUGUST	0			#DIV/0!				#DIV/0!	#DIV/0!				#DIV/0!	#DIV/0!
SEPTEMBER	0			#DIV/0!				#DIV/0!	#DIV/0!				#DIV/0!	#DIV/0!
OCTOBER	0			#DIV/0!				#DIV/0!	#DIV/0!				#DIV/0!	#DIV/0!
NOVEMBER	0			#DIV/0!				#DIV/0!	#DIV/0!				#DIV/0!	#DIV/0!
DECEMBER	0			#DIV/0!				#DIV/0!	#DIV/0!				#DIV/0!	#DIV/0!
TOTAL	1,728,367	62	\$ 125,706	#DIV/0!	0	0	1,728,367	#DIV/0!	#DIV/0!			\$ 6,236	#DIV/0!	#DIV/0!
	Total KWH	Days	Total Cost \$/month	Total Cost \$/day	Hydro KWH	Methane KWH	Mid-American KWH	KWH/HR (Avg)	\$/KWH	Gallons	Days	Total Cost \$/Billing Period	Gallons/Day	Total Cost \$/day

	KRMA NATURAL GAS USE				
	Therms	Days	Total Cost \$/Billing Period	Therms/Day	Total Cost \$/day
JANUARY	44,638	31	\$ 16,871	1440	\$ 544
FEBRUARY				#DIV/0!	#DIV/0!
MARCH				#DIV/0!	#DIV/0!
APRIL				#DIV/0!	#DIV/0!
MAY				#DIV/0!	#DIV/0!
JUNE				#DIV/0!	#DIV/0!
JULY				#DIV/0!	#DIV/0!
AUGUST				#DIV/0!	#DIV/0!
SEPTEMBER				#DIV/0!	#DIV/0!
OCTOBER				#DIV/0!	#DIV/0!
NOVEMBER				#DIV/0!	#DIV/0!
DECEMBER				#DIV/0!	#DIV/0!
TOTAL	44,638	31	\$ 16,871	#DIV/0!	#DIV/0!
	Therms	Days	Total Cost \$/Billing Period	Therms/Day	Total Cost \$/day



Annual Load / Gallon Totals

2021

Month Received	City of Momence/Momence Packing	Gilster-Mary Lee Corporation	Hoffman Transportation, LLC	Kankakee Recycling & Disposal Facility	Lake County C&D Landfill	Laraway Recycling & Disposal Facility	Liberty 3 LFGTE Plant - Wabash Valley Power Alliance	Liberty Landfill, LLC	Livingston Landfill	Natural Gas & Pipeline Co. of America	Newton County Landfill	Peoria Packing Co.	Prairie View RDF	Solvay USA Inc.	Tank Cleaning Solutions, LLC	Zutal Feed Solutions	Total	# Loads
January	138,200	80,000	10,000		57,287			912,664	255,040	50,000	1,331,545		95,432	72,194	180,472	23,000	3,205,834	507
February	168,000	61,000	15,000					1,387,606	166,784	30,000	913,999		25,925	42,583	200,029	18,000	3,028,926	462
March																		
April																		
May																		
June																		
July																		
August																		
September																		
October																		
November																		
December																		
Totals	306,200	141,000	25,000		57,287			2,300,270	421,824	80,000	2,245,544		121,357	114,777	380,501	41,000	6,234,760	989
Average	153,100	70,500	12,500		57,287			1,150,135	210,912	40,000	1,122,772		60,679	57,389	190,251	20,500	3,117,380	495
Treatment Costs as of 05/01/20	0.082	0.082	0.056	0.056	0.056	0.056	0	0.056	0.056	0.082	0.056	0.082	0.056	0.131	0.082	0.071		
Treatment Costs as of 05/01/19	0	0.071	0.049	0.049	0.049	0.049	0	0.049	0.049	0.071	0.042	0.071	0.049	0.114	0.071	0.071		