

AGENDA

KANKAKEE RIVER METROPOLITAN AGENCY MEETING

Thursday, October 27, 2022

9:00 AM in KRMA Board Room

1600 Brookmont Blvd., Kankakee, IL 60901

I. Roll Call

II. Public Comment

III. Approval of Board Minutes

A. September 22, 2022 – Regular Board Meeting

IV. Reports

A. Operations & Maintenance Report

1. Monthly Report (MOR)

B. Executive Director Report

1. Water, Gas & Electric Use/Cost

2. Hauled in Waste Summary

3. Operations Report

C. Financial Report

1. Reports

2. Hauled in Waste Report

3. Flows Graphs

D. Communications

1. Burling Professional Cleaners, Inc.

2. CMOM Update

3. Kimley Horn Letter

V. Old Business

A. CSL Update

B. NARP Update

C. Bradley Property Update

D. ICP Machine

E. Republic Contract

F. Security Updates

VI. New Business

A. Kankakee County E-Waste Contract

B. Resolution Approving IntraFi Network Deposits DDA-MMDA Deposit Placement Agreement with Midland States Bank 4881-2245-3817 v1

C. Resolution Approving Custodial Agreement with Midland States Bank 4861-1121-9257 v1

D. Audit Update

VII. Executive Session

A. Personnel & Probable or Imminent Litigation

VIII. Next Meeting

Thursday, November 17, 2022 (9:00 AM in KRMA Boardroom)

KANKAKEE RIVER METROPOLITAN AGENCY
MINUTES
September 22, 2022 – 9:00 A.M
1600 W Brookmont Blvd.

In attendance:

Board of Directors:

Mayor Christopher Curtis, City of Kankakee
Financial Director Robert Romo, Village of Bradley
Alderman Danita Swanson, City of Kankakee
Alderman Larry Osenga, City of Kankakee
Steven Hunter, Representative, City of Kankakee
Financial Director Tara Latz, Alternate, Village of Bourbonnais

Administration:

Dave Tyson, KRMA Executive Director
Karen Benson, Smith, Koelling, Dykstra & Ohm, P.C

Attorney:

Neal Smith, Robbins Schwartz

KRMA Staff:

Art Strother, Superintendent
Melanie Gossett, Asst. Superintendent of Technical Services
Dustin Scheppler, Asst. Superintendent of O & M

Other:

Terry Memenga, Alternate, Village of Bradley
Mayor Michael Watson, Village of Bradley
Craig Henderson, Village of Bradley
Ryan McGinnis, City of Kankakee
Dan Small, Strand Associates

Chairman, Mayor Curtis called the meeting to order

I. **Roll Call**

Roll Call was taken. All Board members were present except for Mayor Paul Schore and Mayor Brian Stump. Alternate Financial Director Tara Latz, Village of Bourbonnais, sitting in for Vice Chairman Paul Schore for deciding vote.

II. **Public Comment**

None

III. **Approval of Board Minutes August 25, 2022 - Regular Board Meeting**

Motion to approve the August 25, 2022, Regular Board Meeting minutes was made by: Dir Osenga and seconded by Dir Hunter. Dir Romo made comments to be reflected in the August 25, 2022, minutes: Some of the things that Village of Bradley is looking for is equal representation on the board, insourcing the lab, elimination or proper documentation of P.I.L.O.T fee, and changing the pricing to communities to also include loadings and not just flows. All board members present, and Alternate Tara Latz voted in favor of, Vice Chairman Paul Schore and Dir Brian Stump absent. Motion Carried.

IV. **Reports**

A. **Operations & Maintenance Report**

1. **Monthly Report**

Art informed the board that Attachment A of the MOR shows how the plant is doing day to day. He references the graphs stating we are in the red for loading to the plant, TSS (Total Solid Suspended), and Ammonia.

Although the plant is running well, we cannot continue to run like this, there must be adjustments made before it becomes a serious problem. Art stressed the importance of an expansion, stating we must have the ability to treat whatever comes to this plant. Therefore, having additional capacity will allow us to deal with things that come unexpected. Dir Romo asked questions, what is the short-term process to controlling the plant until the expansion is agreed upon and is there a way to control what's coming into the plant? Art replied, our short-term solution is process control, we adjust the process to deal with it. However, we don't have control over big rainfalls that come in and wash out our microorganisms. Due to the rainfall, we now don't have the inventory of microorganisms to treat the waste. We have a pretreatment program, in addition, pretreatment is something that can be done by the industry as well. Both Art and Romo agreed that KRMA has a loading issue. Art stated the flow to our plant is not a problem, we are designed to handle the flow, however when changes occur with the loadings, we must change with it. Dir Romo asked, what changed with the loadings from 10 to 12 years ago. Art stated even if we got rid of all the industry, KRMA will still be operating at 80% of its design just from the population of the community. Chairman Curtis asked, is CSL and Dow Chemical, with their expansion, two of the big loading factors? Art replied, we have three major participants: CSL Behring, Dow Chemical (Rohm and Haas), and Kensing (BASF). Dir Romo asked were these industries ever pretreating. Chairman Curtis replied, BASF was pretreating, they are not now, however we have advised them to go back to pretreating. Dow Chemical used to pretreat, they are not now. CSL is building their pretreatment plant. Dir Hunter asked, is there new innovative technology that will go with the expansion to address the loading issue? Art replied, no not loadings. Art stated there's approximately 59,000 people within the four communities. Each person produces 1.7lbs of BOD a day, that, just the population alone, with no industry and/or leachate you are already at 75-80% capacity of this plant. Dan gave detailed information on the purpose of the last project, stating it was a replacement project to maintain the current capacity. Art added, we need to utilize our Engineers to help us determine what needs to be done, because if we can't come up with a plan to take to the State, they are not going to consider anything regarding funding.

B. Executive Director Report

2. Water, Gas & Electric Use/Cost

Exec. Dir. Dave Tyson presented the yearly utility usage. Exec Dir Tyson stated everything is in order and running as planned.

3. Hauled In Waste Summary

Exec. Dir. Tyson stated hauled in waste continues to be strong and continues to supply a good revenue stream. Chairman Curtis asked, what does hauled in waste means from a loading perspective? Art replied, prior to Newton County backing off, Newton was overloading the plant. At this point, Newton County is not that big of a factor, in fact, if you take all the leachate loadings coming in here you are at about 7000lbs.

4. Operations Report

Exec Dir Dave Tyson stated the plant is running well. We still had more vandalism occur. We are working on our security issues. All staff was informed not to confront the trespasser, just call the police. All buildings are locked down. Chairman Curtis stated they will be providing cameras and the City of Kankakee will install them.

C. Financial Report

1. Reports

Karen Benson presented the financial statements, stating the net position is good, statement of revenue and expenses aligns with the budget, and change in net position, net income for the month is a little over budget. Also, the fiscal YTD is in line. Karen also explained to the board the Insured Cash Sweep Account through Midland Bank for a consideration to capitalize on the higher interest rate.

2. Hauled In Waste Report

Karen stated haul in waste continues to bring in revenue.

3. Flows Graphs

Karen presented the yearly flows.

D. Communications

1. IEPA Violation Notice dated August 08, 2022, and responded on August 12, 2022

Exec Dir Tyson informed the board members of the IEPA violations and how they were corrected. IEPA accepted our resolution, however, KRMA had to sign a proposed compliance commitment agreement. If we don't stay in compliance, we could be subjected to a \$2,000/day fine. Art explained how a washout of microorganisms can impact the plant. Also, process control is about F:M ratio (Food to Mass). Food is what's coming into the plant, divided by the mass, which is the number of microorganisms available to consume that food.

V. **Old Business**

A. **CSL Update**

No Update. Art informed the board CSL have-to-have K operating license to run their plant. Melanie gave a couple of CSL employees a tour of the plant.

B. **NARP Update**

1. **Approval of Strand 2023 NARP Proposal**

Exec Dir Tyson presented the Final Nutrient Assessment Reduction Plan (NARP) that is required by our permit. Strand Associates proposed a contract for \$35,000. Motion to accept the Strand 2023 NARP Proposal was made by Dir Hunter and seconded by Dir Romo. All board members present, and Alternate Tara Latz voted in favor of, Vice Chairman Paul Schore and Dir Brian Stump absent. Motion Carried.

C. **Bradley Property**

Mayor Watson stated, they are expecting to pass an ordinance to spend \$100,000 for a consultant from a Wastewater Engineering Firm out of Minnesota that will give the Village of Bradley an extensive study on what they should be doing. He also stated, they will need to have access to the plant and maybe ask some questions from personnel. The meeting will be held this Monday, September 26, 2022, at 6:30pm at the Village Hall, an open invitation was given to whom ever would like to attend. Dir Hunter ask about the timeline. Mayor Watson confirmed approximately six months.

D. **ICP Machine**

Chairman Curtis stated they are still waiting on some parts for the ICP Machine to be installed.

E. **Republic Contract**

There was discussion regarding the Republic Contract. Dir Romo asked do we need to have a contract with them since we do not have a contract with our other haulers. Art informed them that the contract is per their request. Melanie informed the board that there are permits with the other haulers.

F. **Security Updates**

Chairman Curtis asked do we have signs on the external fence? Exec Dir Tyson/Melanie both responded yes, we do. Dir Osenga asked are some of the buildings alarmed and is the main building locked? Exec Dir Tyson replied, no, and the main building is open 24 hours a day. Dir Hunter stated that maybe KRMA should consider more than two staff members at night and weekends. Exec Dir Tyson stated we are going to lock down all the buildings 24/7, for key entry only. Chairman Curtis stated we should get a proposal for cost for locking down building 10.

G. **Consideration of Close Session Minutes (July 2021 – December 2021)**

Motion to define confidentiality still exist, close session minutes will remain confidential and stay in place was made by Dir Romo and seconded by Dir Hunter. Board members: Dir Hunter, Dir Osenga, Dir Swanson, Dir Romo, and Chairman Curtis voted in favor of, and Alternate Tara Latz voted abstained, Vice Chairman Paul Schore and Dir Brian Stump absent. Motion Carried

H. **Update on Simms Litigation**

Attorney Neal gave an update on Simms Litigation.

VI. **New Business**

A. **Authorization of Strand Associates Preliminary Design**

Exec Dir Tyson asked Strand Associates to complete a four-part study: with and without Bradley Property and with and without hauled in waste. This will increase Strand Associate Project Plan from \$215,000 to \$282,000. Without these plans we are not able to apply for money. Dir Hunter stressed the importance of this plan for infrastructure funding that is coming up. Dir Romo asked questions regarding the substantial debt and if we need to seek a financial advisor, will we be able to get IEPA loans, will we be able to get everything financed through the IEPA and is there a limit? Chairman Curtis replied, yes, we should be able to receive IEPA loans. Dan Small stated getting IEPA loans is the first step in addition to the funding opportunities, however, it's the last step of the project

plan. Dir Romo asked if IEPA doesn't cover 100% of the expansion, will Aqua give us money through Bourbonnais. Dan replied, KRMA will be responsible for repaying the loan.

B. Approval of IEPA Project Plan Amendment No. 2

Motion to approve the IEPA Project Plan Amendment No. 2 for Strand Associates was made by Dir Osenga and seconded by Dir Hunter. All board members present, and Alternate Tara Latz voted in favor of, Vice Chairman Paul Schore and Dir Brian Stump absent. Motion Carried.

Dir Hunter asked are we looking out for the polo virus in wastewater? Melanie responded, as far as she knows, they are not testing for that right now, however, she will keep the board posted of any updates.

VII. Executive Session

A. Personnel & Probable or Imminent Litigation

Motion to go into Executive Session to discuss Personnel, and probable or imminent litigation pursuant to Sections 2(c)(11) of the open meetings act, was made by: Dir. Swanson and seconded by: Dir. Osenga. Motion carried.

Roll call was taken, and all Board Members and Alternate Tara Latz were present except for Vice Chairman Schore and Dir Stump absent.

The Board went into Executive Session to discuss Personnel and probable or imminent litigation.

Motion to return to Open Session was made by: Dir. Hunter and seconded by: Dir Swanson. Motion carried.

Roll call was taken, and all Board Members and Alternate Tara Latz were present except for Vice Chairman Schore and Dir Stump absent.

With the Board back in open session, there was no action.

VIII. Next Meeting

Next Regular Board Meeting- Thursday, October 27, 2022 (9:00 A.M. at KRMA Board Room)

Motion to Adjourn was made by: Dir Osenga and seconded by Dir Swanson. All board members present voted in favor of. Motion Carried.



Providing Wastewater Treatment to the Kankakee River Valley

A photograph of autumn foliage in shades of orange, yellow, and red, with a soft bokeh effect in the background. The text is overlaid on this image.

FALL IS
PROOF THAT
CHANGE IS
BEAUTIFUL

Monthly Operations Report

September 2022

KRMA's SEPTEMBER HIGHLIGHTS:

The KRMA staff Assistant Superintendent Melanie Gossett, Assistant Superintendent Dustin Scheppler, Superintendent Arthur Strother, Executive Director Dave Tyson, and Lab Operations Manager Ryan McGinnis made site visit to Kensing Solution to discuss plant operations.

In accordance with Special Condition 16 of KRMA's NPDES Permit, KRMA has compiled the CMOM plan prepared by KRMA's four satellite member municipalities: City of Kankakee, and Villages of Aroma Park, Bourbonnais, and Bradley.

CSL Behring had two of their new operators who are in training to visit the KRMA facility to see how biological treatment is operated.

The month of September, the agency had violation of nitrogen ammonia, which was reported to IEPA. There were no other violations for the Illinois Environmental Protection Agency NPDES (National Pollutant Discharge Elimination System) permits.

1.0 WASTEWATER TREATMENT FACILITY OPERATION

Attachment A Details the monthly operational information for the facility.

2.0 INFLUENT FLOW

Table 2.1 Summarizes total flow and average daily flow to the facility from each municipality.

Attachment B for details of daily flow rates.

Table 2.1
Plant Flows

Municipality	Plant Influent	Kankakee	Bourbonnais	Bradley	Aroma Park
Total Flow (MGD)	295.41	197.37	72.615	24.400	1.022
Daily Average Flow (MGD)	9.85	6.58	2.421	.813	0.034

3.0 EFFLUENT QUALITY

Table 3.1 Summarizes the effluent quality data.

Table 3.1
Effluent Quality

	IEPA Limits	Effluent Average
Biochemical Oxygen Demand (BOD) – Monthly Average	20 mg/l	5 mg/l
Total Suspended Solids (TSS) - Monthly Average	25 mg/l	13 mg/l
PH	6-9 SU	7.28 SU
Chlorine Residual	0.05 mg/l	0.025 mg/l
Fecal Coliform	400/100 ml	9/100 ml

ODOR ISSUES:

- There were one odor complaints registered at the KRMA facility in September.
- There were no odor complaints registered at the East Gate site in September.

4.0 PERSONNEL

The Agency would like to Congratulate these KRMA employees for September work anniversaries. Thank you all for being such a valuable and loyal member of our team. Your knowledge, hard work and dedication is greatly appreciated.

John Lund, O & M Operator Specialist, 4 years

Maxwell Gossett, O & M Operator Specialist, 4 years

Arthur Strother, Superintendent, 37 years

Employees continue to follow the COVID-19 Warning signs and Safety Tips. One of the best ways to help keep workers healthy is to stay home **except for** necessary outings, and when you do go out for the necessities, there are steps you can take to minimize the risk of spreading illness.

5.0 MAINTENANCE AND REPAIR

Number of Work Orders Closed for the Month:	953
Hours of Scheduled Work Orders Performed:	604.76

6.0 SLUDGE HANDLING

Start Date: 09/01/2022
End Date: 09/30/2022

Gallons of sludge produced and sent to thickening:	2,953,217.00
Gallons of sludge put into storage after thickening:	1,084,200.00
Sludge removed from the plant for land application:	596,400.00
Sludge remaining in storage as of November 30th:	3,175,000.00

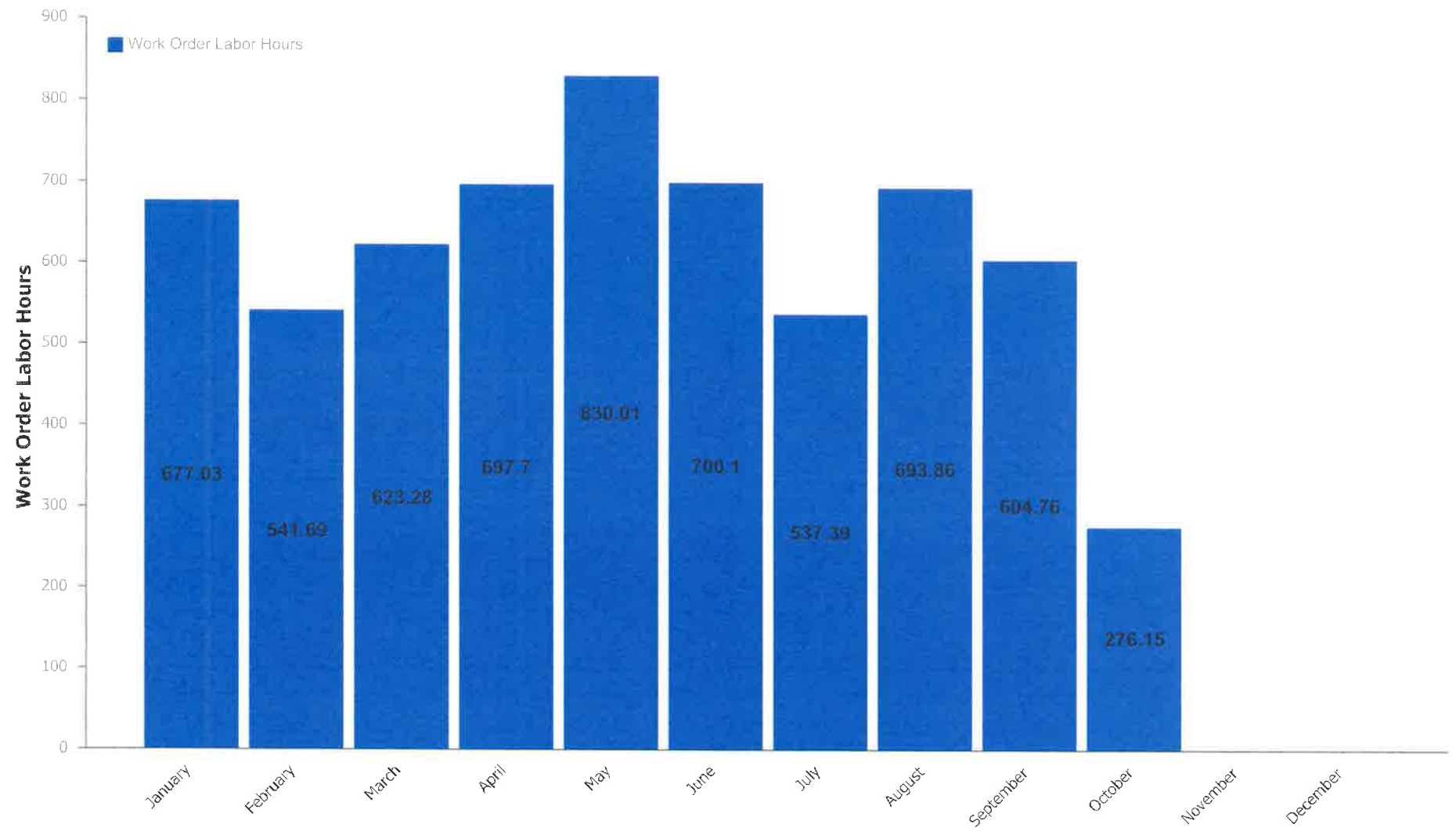
7.0 WATER USAGE

SEPTEMBER 2022 (32 DAYS): 47,885 CU FT= 358,200 GALS. = \$3,006.79

NUMBER OF DAYS IN THE BILLING CYCLE: 32

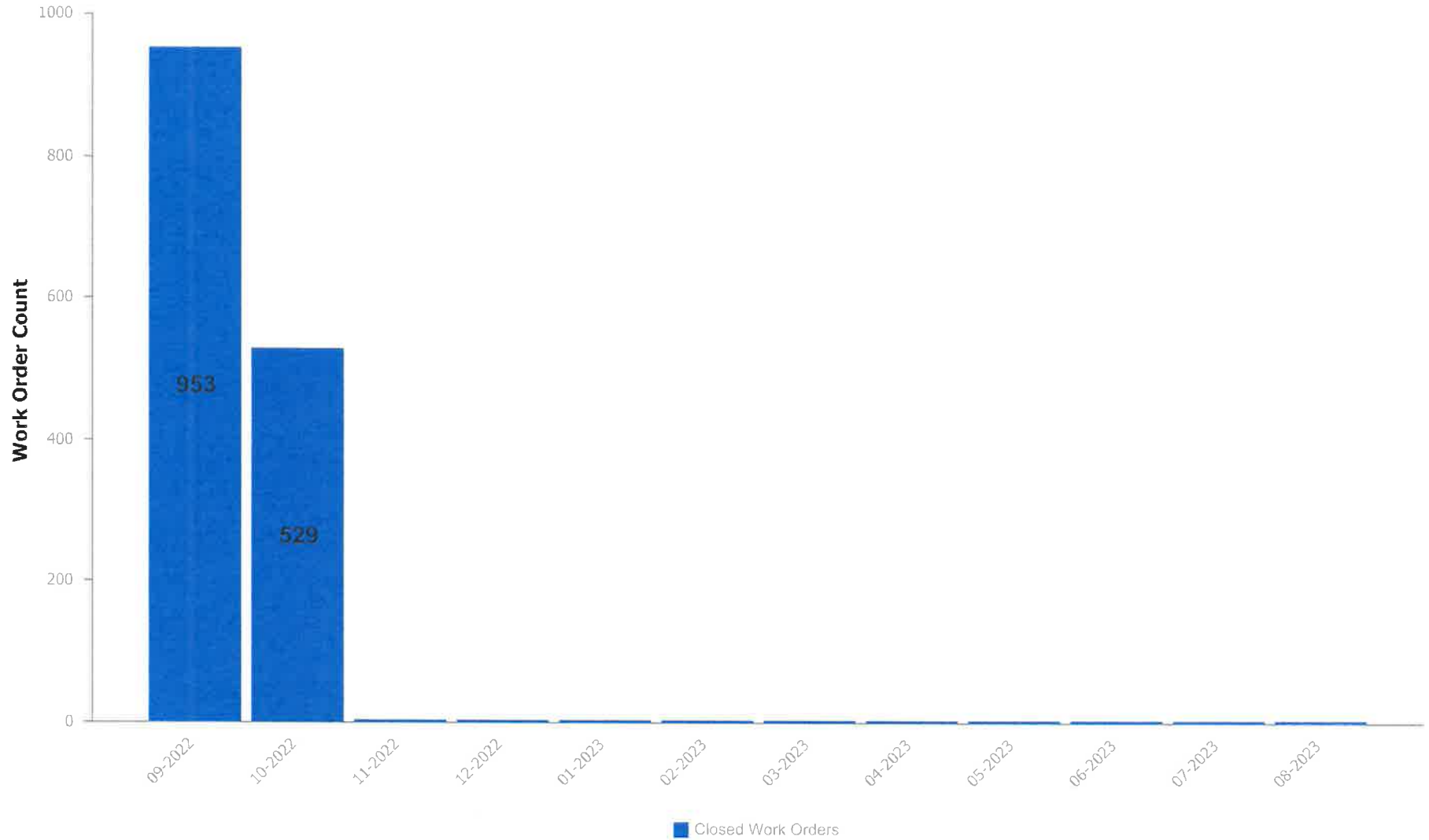
Work Order Labor Hours by Month

2022



Work Orders Closed By Month

From September, 2022 to August, 2023



ATTACHMENT

A

DMR Monthly Report

9/1/2022 to 9/30/2022

Var #	452	159	119	236	454	351	113	237	386
	EFF FLOW	001 Eff pH	FINAL EFF TSS	Weekly ave Eff TSS	EFF TSS	WeeklyAveEffTSS	EFF-C-BOD	Weekly Ave EffCBOD	EFF C-BOD
Date	MGD	STD UNIT	mg/L	MG/L	LBS/D	LBS/Day	mg/l	MG/L	lbs/day
9/1/2022	10.074	7.23	10		840		5		420
9/2/2022	9.833	7.27	12		984				
9/3/2022	9.951		11	10	913	813	4	4	332
9/4/2022	9.515		16		1,270		4		317
9/5/2022	9.359		8		624		3		234
9/6/2022	9.476	7.23	12		948		4		316
9/7/2022	9.586	7.31	10		799		5		400
9/8/2022	9.567	7.34	10		798		5		399
9/9/2022	9.581	7.28	10		799				
9/10/2022	9.503		10	11	793	862	4	4	317
9/11/2022	11.121		16		1,484		5		464
9/12/2022	11.299	6.96	14		1,319		5		471
9/13/2022	11.424	7.19	14		1,334		6		572
9/14/2022	10.913	7.25	13		1,183		5		455
9/15/2022	10.016	7.37	12		1,002		6		501
9/16/2022	9.567	7.17	12		957				
9/17/2022	9.496		13	13	1,030	1,187	5	5	396
9/18/2022	9.277		11		851		6		464
9/19/2022	10.907	7.25	12		1,092		4		364
9/20/2022	11.025	7.28	12		1,103		6		552
9/21/2022	9.707	7.30	12		971		5		405
9/22/2022	9.586	7.27	12		959		5		400
9/23/2022	9.575	7.36	14		1,118				
9/24/2022	9.496		14	12	1,109	1,029	5	5	396
9/25/2022	9.118		14		1,065		4		304
9/26/2022	9.198	7.25	13		997		4		307
9/27/2022	9.308	7.23	15		1,164		6		466
9/28/2022	9.414	7.44	15		1,178		4		314
9/29/2022	9.357	7.33	14		1,093		5		390
9/30/2022	9.159	7.52	15		1,146				

Minimum	9.118	6.96	8	10	624	813	3	4	234
Maximum	11.424	7.52	16	13	1,484	1,187	6	5	572
Average	9.847	7.28	13	12	1,031	973	5	5	398
Sum	295.408	152.83	376	46	30,924	3,891	120	19	9,956

Limit		Range 6-9	25	45	5213	9383	20	40	4,170
--------------	--	------------------	-----------	-----------	-------------	-------------	-----------	-----------	--------------

DMR Monthly Report

9/1/2022 to 9/30/2022

Var #	352	187	191	401	101	450	115	451	455
	WeeklyAverageEffCBOD	001 EFF CL2	FECAL COLI 001	TOTAL INF FLOW	INFLUENT BOD	INF BOD LOAD	INFLUENT TSS	INF TSS	BOD REMOVAL
Date	LBS/Day	mg/L	#/100ml	MGD	mg/L	LBS/D	mg/L	LBS/D	%
9/1/2022		0.024	12	10.07	360	30,246	406	34,111	99
9/2/2022		0.024	9	9.83			374	30,671	
9/3/2022	327			9.95	270	22,408	298	24,731	99
9/4/2022				9.52	158	12,538	346	27,457	97
9/5/2022				9.36	149	11,630	58	4,527	98
9/6/2022		0.025	2	9.48	493	38,962	394	31,138	99
9/7/2022		0.015	2	9.59	460	36,776	332	26,542	99
9/8/2022		0.027	3	9.57	442	35,267	344	27,447	99
9/9/2022		0.028	4	9.58			436	34,839	
9/10/2022	331			9.50	245	19,417	320	25,362	98
9/11/2022				11.12	140	12,985	344	31,906	96
9/12/2022		0.010	29	11.30	539	50,792	446	42,028	99
9/13/2022		0.018	1	11.42	383	36,491	132	12,576	98
9/14/2022		0.027	3	10.91	347	31,582	320	29,125	99
9/15/2022		0.008	5	10.02	329	27,483	268	22,387	98
9/16/2022		0.038	1	9.57			330	26,330	
9/17/2022	476			9.50	308	24,393	248	19,641	98
9/18/2022				9.28	314	24,294	376	29,091	98
9/19/2022		0.021	11	10.91	482	43,845	364	33,111	99
9/20/2022		0.026	10	11.03	345	31,722	388	35,676	98
9/21/2022		0.027	14	9.71	353	28,578	470	38,049	99
9/22/2022		0.024	7	9.59	610	48,768	314	25,103	99
9/23/2022		0.024	3	9.58			362	28,908	
9/24/2022	430			9.50	375	29,699	250	19,799	99
9/25/2022				9.12	318	24,182	224	17,034	99
9/26/2022		0.035	12	9.20	417	31,989	240	18,411	99
9/27/2022		0.028	4	9.31	680	52,788	280	21,736	99
9/28/2022		0.025	3	9.41	387	30,384	370	29,050	99
9/29/2022		0.035	57	9.36	423	33,010	414	32,307	99
9/30/2022		0.029	7	9.16			228	17,416	

Minimum	327	0.008	1	9.12	140	11,630	58	4,527	96
Maximum	476	0.038	57	11.42	680	52,788	470	42,028	99
Average	391	0.025	9	9.85	373	30,809	323	26,550	99
Sum	1,564	0.518	199	295.41	9,327	770,226	9,676	796,510	2,464

Limit	8,340	0.05	400						
--------------	--------------	-------------	------------	--	--	--	--	--	--

DMR Monthly Report

9/1/2022 to 9/30/2022

Var #	456	1040	1041	1042	1043	255	297	953	1023
	TSS REMOVAL	North Effluent DO - SCADA	South Effluent DO - SCADA	Daily Average Effluent DO	Effluent DO weekly average	FINAL EFF NH3N	Eff Nitrogen #	Eff_Total Phosphoru s- TP(TNT)	Effluent Total Nitrogen
Date	%	mg/l	mg/l	mg/l	mg/l	mg/L	#/day	mg/l	mg/l
9/1/2022	98	6.99	7.23	7.11		0.96	80.66	0.38	
9/2/2022	97	6.98	7.14	7.06					
9/3/2022	96	7.01	7.14	7.08	7.00				
9/4/2022	95	7.03	7.13	7.08					
9/5/2022	86	7.06	7.12	7.09		0.05	3.90	0.30	
9/6/2022	97	7.13	7.18	7.16		0.05	3.95	0.26	
9/7/2022	97	7.03	7.08	7.06		0.05	4.00	0.43	8.90
9/8/2022	97	6.92	6.97	6.95		0.11	8.94	0.41	
9/9/2022	98	6.98	6.96	6.97					
9/10/2022	97	6.98	6.96	6.97	7.04				
9/11/2022	95	6.96	6.98	6.97		0.06	5.69	0.35	
9/12/2022	97	7.07	7.06	7.07		0.96	90.75	0.33	15.46
9/13/2022	89	7.10	7.08	7.09		0.92	87.46	0.32	
9/14/2022	96	7.12	7.06	7.09		0.34	30.85	0.32	
9/15/2022	96	7.14	7.10	7.12		0.40	33.50	0.28	
9/16/2022	96	7.10	7.18	7.14					
9/17/2022	95	6.94	7.12	7.03	7.07				
9/18/2022	97	6.82	7.11	6.97		0.29	22.51	0.35	
9/19/2022	97	6.64	6.98	6.81		1.07	97.33	0.33	
9/20/2022	97	6.54	6.87	6.71		1.44	132.41	0.37	
9/21/2022	97	6.49	6.85	6.67		0.19	15.46	0.36	13.84
9/22/2022	96	6.58	7.04	6.81		0.31	24.46	0.38	
9/23/2022	96	6.51	7.02	6.77					
9/24/2022	94	6.55	7.09	6.82	6.79				
9/25/2022	94	6.74	7.18	6.96		0.18	13.92	0.40	
9/26/2022	95	7.09	7.34	7.22		0.05	3.84	0.47	
9/27/2022	95	7.06	7.35	7.21		2.84	220.47	0.45	
9/28/2022	96	6.86	7.04	6.95		9.90	777.28	0.45	13.70
9/29/2022	97	6.68	7.02	6.85		2.53	197.43	0.39	
9/30/2022	93	6.48	7.21	6.85					

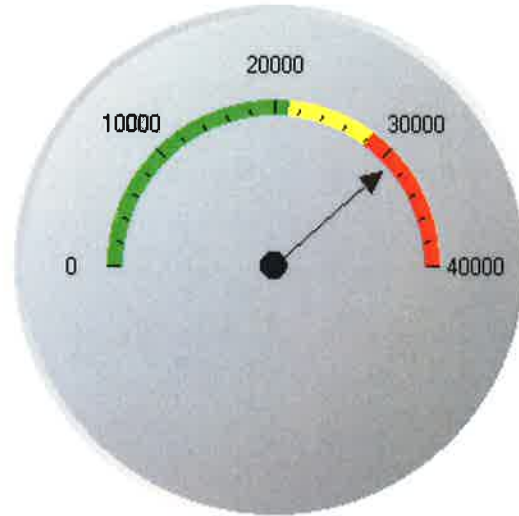
Minimum	86	6.48	6.85	6.67	6.79	0.05	3.84	0.26	8.90
Maximum	98	7.14	7.35	7.22	7.07	9.90	777.28	0.47	15.46
Average		6.89	7.09	6.99	6.98	1.14	92.74	0.37	12.98
Sum	2,866	206.58	212.59	209.59	27.90	22.71	1,854.80	7.32	51.90

Limit				<i>min >4.0</i>	<i>>4.5</i>	<i>7.9</i>	<i>1647</i>		
				<i>avg >6.0</i>					

Influent BOD loading Lbs - Monthly AVG

30,809 Lbs./Day

09/01/2022 - 09/30/2022

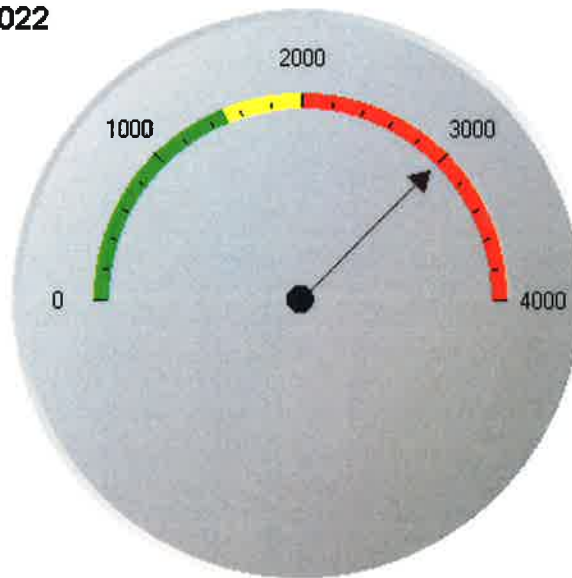


0 to 21150 - Target Loading
21150 to 28200 - Above 75% Threshold
Above 28200

Influent NH3 loading Lbs - Monthly AVG

3,003 Lbs./Day

09/01/2022 - 09/30/2022



0 to 1500 - Target Loading
1500 to 2000 - Above 75% Threshold
Above 2000

Influent TSS loading Lbs - Monthly AVG

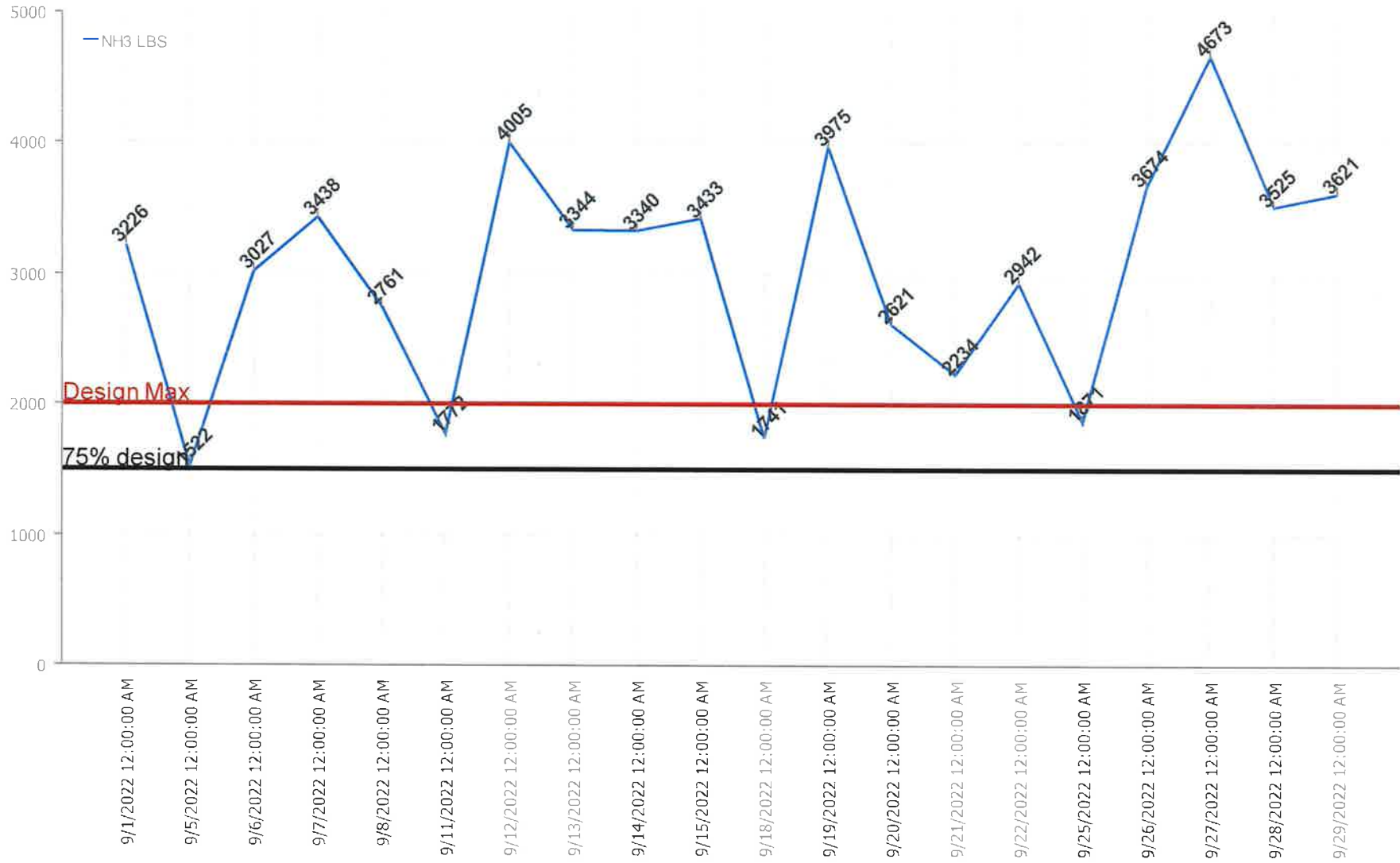
26,550 Lbs./Day

09/01/2022 - 09/30/2022



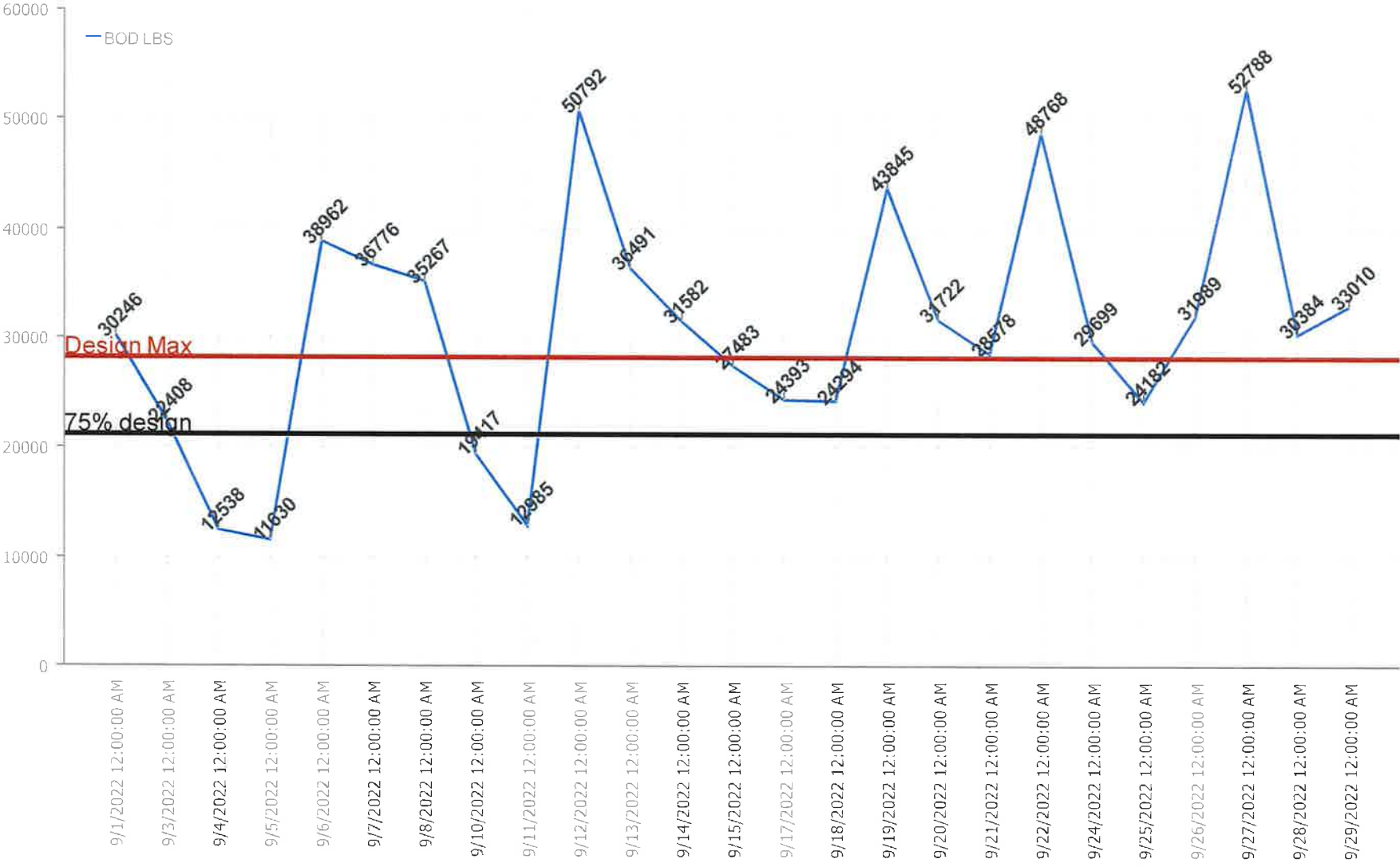
KRMA influent NH3 pounds

Average Lbs. NH3: 3,037.25



KRMA influent BOD pounds

Average Lbs. BOD: 30,809.16



ATTACHMENT

B

ATTACHMENT

C



SAFETY MEETING
October 13, 2022
9:30am & 1:30pm
Agenda

I. Safety Minutes

Review minutes from September 2022

II. Old Business

There were no lost time accidents for the month of September 2022.

III. New Business

A. Safety Training

1. Back Safety Update
2. IPRF Risk Reminder: Back Exercises

B. Safety Concerns

C. Safety Team Leader Report

D. Open Discussion

1. City of Kankakee offering flu shot
2. Safety supply review

Next Meeting: Tuesday, November 15, 2022 9:30am & 1:30pm



SAFETY MEETING
September 20,2022
9:30am & 1:30pm
Minutes

In attendance:

9:30am session:

Melanie Gossett, Facilitator

Shaun Ownbey	Dan Combs	Nick Scheppler	Mike Gowler
Max Gossett	Andy Summers	Alex Bowser	Tawonda Brown
Suzy Berrones	Sandy Spriggs		

1:30pm session:

Melanie Gossett, Facilitator

Shawn Malone	Jim Churney	Ron Haney	Brian Power
Josh Peters	Bryan Kennedy	John Lund	Mike Arseneau
Nick Tucker	RJ Tyson	Ryan McGinnis	Alan Toronjo
Seth Hall			

Absent:

Jack Renchen, Ben Smith, Austin Boyd

I. Safety Minutes

Review minutes from August 2022

II. Old Business

There were no lost time accidents for the month of August 2022.

III. New Business

A. Safety Training

Liberty Fire Equipment, Inc. was onsite to conduct fire extinguisher/fire safety training. Each participant had the opportunity to extinguish a controlled fire.

B. Safety Concerns

1. It was suggested that KRMA purchase 2-way radios for communication when lowered into a tank.
 - ✓ Purchased
2. Inventory items that need to be purchased: XL Tyvek suits, disposable ear plugs, 4.5" cut-off wheels and spare locks for the Lock out/Tag out stations.
 - ✓ Purchased
3. Security issues were discussed:
 - a. The west side of building #10 needs to have better lighting.
 - b. Nick has identified all the locks on doors that will not operate with the common key issued.
 - c. Rather than leaving the keys in the vehicles, a lock box should be kept in building #66.
 - ✓ Purchased, needs to be installed.
 - d. Does the police department have the code or a keycard to the main gate?
 - ✓ Yes. It was confirmed that they do have the information. It was reentered into their call system.
 - e. Everyone was reminded to not confront any trespassers, but to call the police.
 - f. Is there a way to manually operate the front gate?
 - ✓ Yes, instructions to follow.

C. Safety Team Report

Safety Team Leader responsibilities transferred from RJ Tyson to Mike Arseneau.

D. Open Discussion

1. The City of Kankakee is offering flu shot services at no cost to KRMA staff. Dates and times to follow.
2. Participants in the KRMA 6-month weight challenge were reminded to weigh-in on October 11th or 13th.
3. A request was made for KRMA to purchase key leashes for employees given the current security measures taken.
 - ✓ Purchased.
4. Will a new truck be added to the fleet?
 - ✓ Yes. Status update next month.
5. The driver's seat in the F-250 is falling apart.
 - ✓ Permission was granted to spend up to \$200 for a new seat.

Next Meeting: **Thursday, October 13, 2022**
9:30am & 1:30pm

ATTACHMENT

D

FIELD CALIBRATION SHEET

COMPANY: KRMA

CITY: KANKAKEE

FLOW METER MODEL: Siemens Hydro Ranger #1

Influent October 4th, 2022

PRIMARY DEVICE: Flume

FLOW: 0-73 MGD

MEASURING DEVICE: Ultrasonic

CHECK POINTS:

LEVEL? YES

FREE FLOWING? Yes

TURBULENCE? No

BLOCKAGE? NO

SURFACE BUILD-UP? No

HEAD MEASURING DEVICE MOUNTED PROPERLY? YES

BLOCKAGE IN HEAD MEASURING DEVICE? NO

IS FLOW METER PROGRAMMED CORRECTLY? YES

CALIBRATION:

NOTE: THE ZERO POINT FOR MEASURING MUST BE LEVEL WITH THE WEIR CREST OR FLUME ZERO POINT:

A) IF POSSIBLE, CUT-OFF FLOW & SET LEVEL TO 0.000FT

LEVEL BEFORE:

LEVEL AFTER:

B) IF FLOW CANNOT BE CUT-OFF, ADJUST LEVEL ON METER TO MEASURED POINT:

LEVEL BEFORE: Target Set 23 MGD AS Found 23.002 MGD

LEVEL AFTER: 23.002 MGD

LEVEL FLOW CONVERSION CHECK:

WITH FLOW THRU PRIMARY DEVICE, CHECK LEVEL TO FLOW CONVERSION WITH HANDBOOK OR PRIMARY DEVICE DATA SHEET: YES/OK

TOTALIZER CHECK:

WITH FLOW GOING THRU PRIMARY DEVICE, VERIFY THAT TOTAL FLOW IS INTEGRATING PROPERLY USING TIMED RATE METHOD: YES/OK

CALIBRATED BY: BRIAN SCHEPPLER

DATE: 10/4/2022

BC SYSTEMS INC.
2778 N. 4000 E. ROAD
BOURBONNAIS ILLINOIS 60914
PHONE: 1-815-671-1257
FAX: 1-815-802-0219

FIELD CALIBRATION SHEET

COMPANY: KRMA

CITY: BRADLEY/ RIVER DRIVE

FLOW METER MODEL: Isco Signature

INFLUENT October 4th, 2022

PRIMARY DEVICE: PHARSHAL

FLOW: 0-21.36

MEASURING DEVICE: ULTRASONIC

CHECK POINTS:

LEVEL? YES

FREE FLOWING? Yes

TURBULENCE? Yes

BLOCKAGE? NO

SURFACE BUILD-UP? NONE

HEAD MEASURING DEVICE MOUNTED PROPERLY? YES

BLOCKAGE IN HEAD MEASURING DEVICE? NO

IS FLOW METER PROGRAMMED CORRECTLY? YES

CALIBRATION:

NOTE: THE ZERO POINT FOR MEASURING MUST BE LEVEL WITH THE WEIR CREST OR FLUME ZERO POINT:

A) IF POSSIBLE, CUT-OFF FLOW & SET LEVEL TO 0.000FT

LEVEL BEFORE:

LEVEL AFTER:

B) IF FLOW CANNOT BE CUT-OFF, ADJUST LEVEL ON METER TO MEASURED POINT:

LEVEL BEFORE: Target 9" Level reading 9.041"

LEVEL AFTER: 9.041"

LEVEL FLOW CONVERSION CHECK:

WITH FLOW THRU PRIMARY DEVICE, CHECK LEVEL TO FLOW CONVERSION WITH HANDBOOK OR PRIMARY DEVICE DATA SHEET: YES/OK

TOTALIZER CHECK:

WITH FLOW GOING THRU PRIMARY DEVICE, VERIFY THAT TOTAL FLOW IS INTEGRATING PROPERLY USING TIMED RATE METHOD: YES/OK

CALIBRATED BY: BRIAN SCHEPPLER

DATE: 10/4/2022

BC SYSTEMS INC.
2778 N. 4000 E. ROAD
BOURBONNAIS ILLINOIS 60914
PHONE: 1-815-671-1257
FAX: 1-815-802-0219

FIELD CALIBRATION SHEET

COMPANY: KRMA

CITY: KANKAKEE

FLOW METER MODEL: Siemens Hydro Ranger #2

INFLUENT October 4th, 2022

PRIMARY DEVICE: Flume

FLOW: 0-73.425 MGD

MEASURING DEVICE: Ultrasonic

CHECK POINTS:

LEVEL? YES

FREE FLOWING? Yes

TURBULENCE? NO

BLOCKAGE? NO

SURFACE BUILD-UP? No

HEAD MEASURING DEVICE MOUNTED PROPERLY? YES

BLOCKAGE IN HEAD MEASURING DEVICE? NO

IS FLOW METER PROGRAMMED CORRECTLY? YES

CALIBRATION:

NOTE: THE ZERO POINT FOR MEASURING MUST BE LEVEL WITH THE WEIR CREST OR FLUME ZERO POINT:

A) IF POSSIBLE, CUT-OFF FLOW & SET LEVEL TO 0.000FT

LEVEL BEFORE:

LEVEL AFTER:

B) IF FLOW CANNOT BE CUT-OFF, ADJUST LEVEL ON METER TO MEASURED POINT:

LEVEL BEFORE: Target Set 23 MGD AS Found 23.45 MGD

LEVEL AFTER: 23.002 MGD

LEVEL FLOW CONVERSION CHECK:

WITH FLOW THRU PRIMARY DEVICE, CHECK LEVEL TO FLOW CONVERSION WITH HANDBOOK OR PRIMARY DEVICE DATA SHEET: YES/OK

TOTALIZER CHECK:

WITH FLOW GOING THRU PRIMARY DEVICE, VERIFY THAT TOTAL FLOW IS INTEGRATING PROPERLY USING TIMED RATE METHOD: YES/OK

CALIBRATED BY: BRIAN SCHEPPLER

DATE: 10/4/2022

BC SYSTEMS INC.
2778 N. 4000 E. ROAD
BOURBONNAIS ILLINOIS 60914
PHONE: 1-815-671-1257
FAX: 1-815-802-0219

FIELD CALIBRATION SHEET

COMPANY: KRMA

CITY: KANKAKEE/RIVERLANE

FLOW METER MODEL: Isco Signature

INFLUENT October 4th, 2022

PRIMARY DEVICE: PHARSHAL

FLOW: 0-516 GPM 0-13.20 IN

MEASURING DEVICE: ULTRASONIC

CHECK POINTS:

LEVEL? YES

FREE FLOWING?

TURBULENCE? NO

BLOCKAGE? No

SURFACE BUILD-UP? No

HEAD MEASURING DEVICE MOUNTED PROPERLY? Yes

BLOCKAGE IN HEAD MEASURING DEVICE? NO

IS FLOW METER PROGRAMMED CORRECTLY? Yes

CALIBRATION:

NOTE: THE ZERO POINT FOR MEASURING MUST BE LEVEL WITH THE WEIR CREST OR FLUME ZERO POINT:

A) IF POSSIBLE, CUT-OFF FLOW & SET LEVEL TO 0.000FT

LEVEL BEFORE:

LEVEL AFTER:

B) IF FLOW CANNOT BE CUT-OFF, ADJUST LEVEL ON METER TO MEASURED POINT

C) LEVEL BEFORE: TARGET SET 24.125 Level 24.122

LEVEL AFTER: 24.122"

LEVEL FLOW CONVERSION CHECK:

WITH FLOW THRU PRIMARY DEVICE, CHECK LEVEL TO FLOW CONVERSION WITH HANDBOOK OR PRIMARY DEVICE DATA SHEET: Yes

TOTALIZER CHECK:

WITH FLOW GOING THRU PRIMARY DEVICE, VERIFY THAT TOTAL FLOW IS INTEGRATING PROPERLY USING TIMED RATE METHOD: Yes

CALIBRATED BY: Brian Scheppler

DATE: 10/4/22

BC SYSTEMS INC.
2778 N. 4000 E. ROAD
BOURBONNAIS ILLINOIS 60914
PHONE: 1-815-671-1257
FAX: 1-815-802-0219

FIELD CALIBRATION SHEET

COMPANY: KRMA

CITY: KANKAKEE/BROOKMONT

FLOW METER MODEL: ISCO Signature

INFLUENT October 4th, 2022

PRIMARY DEVICE: PHARSHAL

FLOW: 0-516 GPM 0-13.20 IN

MEASURING DEVICE: ULTRASONIC

CHECK POINTS:

LEVEL? YES

FREE FLOWING? YES

TURBULENCE? NO

BLOCKAGE? No

SURFACE BUILD-UP? Yes grease

HEAD MEASURING DEVICE MOUNTED PROPERLY?

BLOCKAGE IN HEAD MEASURING DEVICE? NO

IS FLOW METER PROGRAMMED CORRECTLY? Yes

CALIBRATION:

NOTE: THE ZERO POINT FOR MEASURING MUST BE LEVEL WITH THE WEIR CREST OR FLUME ZERO POINT:

A) IF POSSIBLE, CUT-OFF FLOW & SET LEVEL TO 0.000FT

LEVEL BEFORE:

LEVEL AFTER:

B) IF FLOW CANNOT BE CUT-OFF, ADJUST LEVEL ON METER TO MEASURED POINT:

LEVEL BEFORE: Target 24.125" Level 24.109"

LEVEL AFTER: 24.126"

LEVEL FLOW CONVERSION CHECK:

WITH FLOW THRU PRIMARY DEVICE, CHECK LEVEL TO FLOW CONVERSION WITH HANDBOOK OR PRIMARY DEVICE DATA SHEET: Yes

TOTALIZER CHECK:

WITH FLOW GOING THRU PRIMARY DEVICE, VERIFY THAT TOTAL FLOW IS INTEGRATING PROPERLY USING TIMED RATE METHOD: Yes

CALIBRATED BY: Brian Scheppler

DATE 10/4/2022

BC SYSTEMS INC.
2778 N. 4000 E. ROAD
BOURBONNAIS ILLINOIS 60914
PHONE: 1-815-671-1257
FAX: 1-815-802-0219

FIELD CALIBRATION SHEET

COMPANY: KRMA

CITY: BOURBONNAIS/New

FLOW METER MODEL: Isco Laser Flow

INFLUENT October 4th, 2022

PRIMARY DEVICE: 36" PIPE

FLOW: 0-21.36 MGD

MEASURING DEVICE:

CHECK POINTS:

LEVEL? YES

FREE FLOWING? Yes

TURBULENCE? NO

BLOCKAGE? NO

SURFACE BUILD-UP? None

HEAD MEASURING DEVICE MOUNTED PROPERLY? YES

BLOCKAGE IN HEAD MEASURING DEVICE? NO

IS FLOW METER PROGRAMMED CORRECTLY? YES

CALIBRATION:

NOTE: THE ZERO POINT FOR MEASURING MUST BE LEVEL WITH THE WEIR CREST OR FLUME ZERO POINT:

A) IF POSSIBLE, CUT-OFF FLOW & SET LEVEL TO 0.000FT

LEVEL BEFORE:

LEVEL AFTER:

B) IF FLOW CANNOT BE CUT-OFF, ADJUST LEVEL ON METER TO MEASURED POINT:

LEVEL BEFORE: Target level 13.5" As found 13.6"

LEVEL AFTER: 13.6"

LEVEL FLOW CONVERSION CHECK:

WITH FLOW THRU PRIMARY DEVICE, CHECK LEVEL TO FLOW CONVERSION WITH HANDBOOK OR PRIMARY DEVICE DATA SHEET: YES/OK

TOTALIZER CHECK:

WITH FLOW GOING THRU PRIMARY DEVICE, VERIFY THAT TOTAL FLOW IS INTEGRATING PROPERLY USING TIMED RATE METHOD: YES/OK

CALIBRATED BY: BRIAN SCHEPPLER

DATE: 10/4/2022

BC SYSTEMS INC.
2778 N. 4000 E. ROAD
BOURBONNAIS ILLINOIS 60914
PHONE: 1-815-671-1257
FAX: 1-815-802-0219

FIELD CALIBRATION SHEET

COMPANY: KRMA

CITY: Kankakee Influent

FLOW METER MODEL: Isco Laser Flow

INFLUENT October 4th, 2022

PRIMARY DEVICE: 72" PIPE

FLOW: 0-115 MGD

MEASURING DEVICE:

CHECK POINTS:

LEVEL? YES

FREE FLOWING? Yes

TURBULENCE? NO

BLOCKAGE? NO

SURFACE BUILD-UP? Foam

HEAD MEASURING DEVICE MOUNTED PROPERLY? YES

BLOCKAGE IN HEAD MEASURING DEVICE? NO

IS FLOW METER PROGRAMMED CORRECTLY? YES

CALIBRATION:

NOTE: THE ZERO POINT FOR MEASURING MUST BE LEVEL WITH THE WEIR CREST OR FLUME ZERO POINT:

A) IF POSSIBLE, CUT-OFF FLOW & SET LEVEL TO 0.000FT

LEVEL BEFORE:

LEVEL AFTER:

B) IF FLOW CANNOT BE CUT-OFF, ADJUST LEVEL ON METER TO MEASURED POINT:

LEVEL BEFORE: Target level 45.0" As found 44.820"

LEVEL AFTER: 44.820"

LEVEL FLOW CONVERSION CHECK:

WITH FLOW THRU PRIMARY DEVICE, CHECK LEVEL TO FLOW CONVERSION WITH HANDBOOK OR PRIMARY DEVICE DATA SHEET: YES/OK

TOTALIZER CHECK:

WITH FLOW GOING THRU PRIMARY DEVICE, VERIFY THAT TOTAL FLOW IS INTEGRATING PROPERLY USING TIMED RATE METHOD: YES/OK

CALIBRATED BY: BRIAN SCHEPPLER

DATE: 10/4/2022

BC SYSTEMS INC.
2778 N. 4000 E. ROAD
BOURBONNAIS ILLINOIS 60914
PHONE: 1-815-671-1257
FAX: 1-815-802-0219

ATTACHMENT

E

September 2022 Monthly Pretreatment Sample Analysis (metals, cyanide & VOA) for the permitted industries were a total of **81 samples** and a total of **517 analyses**.

Gilster-Mary Lee Corporation	8 Samples
Hoffman Transportation, LLC	7 Samples
Kankakee Recycling & Disposal Facility	2 Samples
Laraway Recycling & Disposal Facility	9 Samples
Liberty Landfill, LLC	8 Samples
Livingston Landfill	6 Samples
Natural Gas & Pipeline Co. of America	3 Samples
Newton County Landfill	12 Samples
Prairie View RDF	10 Samples
Tank Cleaning Solutions, LLC	12 Samples
Verdant Specialty Solutions US LLC	2 Samples
Zutat Feed Solutions	2 Samples

Volumes Received for September 2022 for trucked-in industries.

Gilster-Mary Lee Corporation	54,000 gals	9 loads
Hoffman Transportation, LLC	150,000 gals	30 loads
Kankakee Recycling & Disposal Facility	35,000 gals	5 loads
Lake County C&D Landfill	0 gals	0 loads
Laraway Recycling & Disposal Facility	584,552 gals	97 loads
Liberty 3 LFGTE Plant - Wabash Valley Power Alliance	0 gals	0 loads
Liberty Landfill, LLC	1,068,958 gals	160 loads
Livingston Landfill	144,665 gals	22 loads
Momence Packing	0 gals	0 loads
Natural Gas & Pipeline Co. of America	25,000 gals	5 loads
Newton County Landfill	743,168 gals	112 loads
Peoria Packing Co.	0 gals	0 loads
Prairie View RDF	250,693 gals	47 loads
Prairie View- Will County RNG Plant	0 gals	0 loads
Tank Cleaning Solutions, LLC	205,120 gals	40 loads
Verdant Specialty Solutions US LLC	38,833 gals	7 loads
Zutat Feed Solutions	18,000 gals	3 loads
Totals:	3,317,989 gals	537 loads

The KRMA Facility received a total of **239 loads** of septage which totalled **794,704 gallons** for the month of September 2022

KRMA YEARLY UTILITY USAGE - (2022)

	KRMA ELECTRIC ENERGY USE							KRMA WATER USE						
	Total KWH	Days	Total Cost \$/month	Total Cost \$/day	Hydro KWH	Methane KWH	Champion Energy KWH	KWH/HR (Avg)	\$/KWH	Gallons	Days	Total Cost \$/Billing Period	Gallons/Day	Total Cost \$/day
JANUARY	926,221	33	\$ 48,890	\$ 1,482	-	226815	699,406	1,169	\$ 0.0528	320,300	29	\$ 2,632	11,045	91
FEBRUARY	874,128	30	\$ 48,209	\$ 1,607	-	214,428	659,700	1,214	\$ 0.0552	307,600	28	\$ 2,558	10,986	91
MARCH	896,607	30	\$ 47,153	\$ 1,572	-	241,821	654,786	1,245	\$ 0.0526	384,800	33	\$ 3,173	11,661	96
APRIL	972,082	30	\$ 51,107	\$ 1,704	-	241,821	730,261	1,350	\$ 0.0526	347,700	29	\$ 2,939	11,990	101
MAY	836,456	30	\$ 17,168	\$ 572	-	218,621	617,835	1,162	\$ 0.0205	394,800	30	\$ 3,236	13,160	108
JUNE	849,358	33	\$ 36,521	\$ 1,107	-	198,450	650,908	1,072	\$ 0.0430	421,900	33	\$ 3,408	12,785	103
JULY	794,405	31	\$ 27,377	\$ 883	-	154,896	639,509	1,068	\$ 0.0345	345,200	29	\$ 2,923	11,903	101
AUGUST	726,065	30	\$ 25,128	\$ 838	-	141,409	584,656	1,008	\$ 0.0346	404,500	30	\$ 3,298	13,483	110
SEPTEMBER	829,491	33	\$ 29,719	\$ 901	-	127691	701,800	1,047	\$ 0.0358	358,200	32	\$ 3,007	11,194	94
OCTOBER	0			#DIV/0!	-			#DIV/0!	#DIV/0!				#DIV/0!	#DIV/0!
NOVEMBER	0			#DIV/0!	-			#DIV/0!	#DIV/0!				#DIV/0!	#DIV/0!
DECEMBER	0			#DIV/0!	-			#DIV/0!	#DIV/0!				#DIV/0!	#DIV/0!
TOTAL	7,704,813	280	\$ 331,270	#DIV/0!	0	1,765,952	5,938,861	#DIV/0!	#DIV/0!			\$ 27,174	#DIV/0!	#DIV/0!
	Total KWH	Days	Total Cost \$/month	Total Cost \$/day	Hydro KWH	Methane KWH	Mid-American KWH	KWH/HR (Avg)	\$/KWH	Gallons	Days	Total Cost \$/Billing Period	Gallons/Day	Total Cost \$/day

KRMA NATURAL GAS USE					
	Therms	Days	Total Cost \$/Billing Period	Therms/Day	Total Cost \$/day
JANUARY	51,246	31	\$ 37,075	1653	\$ 1,196
FEBRUARY	43,653	28	\$ 37,415	1559	\$ 1,336
MARCH	35,597	31	\$ 4,867	1148	\$ 157
APRIL	28,698	31	\$ 19,547	926	\$ 631
MAY	14,086	32	\$ 12,908	440	\$ 403
JUNE	9,996	31	\$ 11,155	322	\$ 360
JULY	10,385	31	\$ 9,017	335	\$ 291
AUGUST	9,622	31	\$ 13,912	310	\$ 449
SEPTEMBER				#DIV/0!	#DIV/0!
OCTOBER				#DIV/0!	#DIV/0!
NOVEMBER				#DIV/0!	#DIV/0!
DECEMBER				#DIV/0!	#DIV/0!
TOTAL	203,283	246	\$ 145,895	#DIV/0!	#DIV/0!
	Therms	Days	Total Cost \$/Billing Period	Therms/Day	Total Cost \$/day



Annual Load / Gallon Totals

2022

1600 West Brookmont Blvd
Kankakee, IL 60907
Phone: 815-933-0444
Fax: 815-933-0104

	Gilster Mary Lee Corporation	Hoffman Transportation, LLC	Kankakee Recycling & Disposal Facility	Lake County C&D Landfill	Laraway Recycling & Disposal Facility	Liberty 3 LFGTE Plant - Wabash Valley Power Alliance	Liberty Landfill, LLC	Livingston Landfill	Momence Packing	Natural Gas & Pipeline Co. of America	Newton County Landfill	Peoria Packing Co.	Prairie View RDF	Prairie View - Will County RNG Plant	Tank Cleaning Solutions, LLC	Verdant Specialty Solutions US LLC	Zuraf Feed Solutions	Total	# Loads
January	28,000	15,000					1,208,778	146,664		35,000	1,181,402		115,368		196,412		12,000	2,938,624	458
February	58,000		14,000				1,318,935	158,796	7,000	60,000	896,898		118,370		183,522		12,000	2,827,521	449
March	96,000	65,000			5,683		1,498,168	207,236	53,000	115,000	1,041,338		323,444		198,195	71,715	36,000	3,710,779	601
April	42,000	40,000	14,000				1,303,356	158,234	60,300	75,000	995,618		304,706		198,904	77,697	30,000	3,299,815	524
May	68,000	55,000					1,108,083	125,314	18,000	65,000	927,230		241,557		205,067	94,429	18,000	2,925,680	466
June	62,000	95,000					1,164,068	197,366		20,000	914,338	11,500	204,094		206,884	76,791	6,000	2,958,041	474
July	58,000	150,000			5,633		1,088,668	178,890	12,000	45,000	481,498		245,748		204,468	55,507	18,000	2,543,412	416
August	64,000	170,000	42,000				1,183,579	165,483		25,000	884,689	5,500	431,523		215,049	122,128	24,000	3,332,951	544
September	54,000	150,000	35,000		584,552		1,068,958	144,665		25,000	743,168		250,693		205,120	38,833	18,000	3,317,989	537
October																			
November																			
December																			
Totals	530,000	740,000	105,000		595,868		10,942,593	1,482,648	150,300	465,000	8,066,179	17,000	2,235,503		1,813,621	537,100	174,000	27,854,812	4,469
Average	58,888	82,222	11,666		66,207		1,215,843	164,738	21,471	51,666	896,242	2,125	248,389		201,513	59,677	19,333	3,094,979	497
reatment Costs as of 05/01/22	0.086	0.059	0.059	0.059	0.059	0.059	0.059	0.059	0.086	0.086	0.08	0.086	0.059	0	0.086	0.138	0.082		
reatment Costs as of 05/01/21	0.082	0.056	0.056	0.056	0.056	0.056	0.056	0.056	0.082	0.082	0.056	0.082	0.056	0	0.082	0.131	0.071		



**Monthly TSS/BOD
Loading Report**
September, 2022

IV-C-2
1600 West Brookmont Blvd
Kankakee, IL 60901
Phone: 815-933-0400
Fax: 815-933-0100

Hauler	Gallons	Lbs TSS	Lbs BOD
Gilster-Mary Lee Corporation	54,000	1,835	3,068
Hoffman Transportation, LLC	150,000	3,778	4,816
Kankakee Recycling & Disposal Facility	35,000	230	203
Lake County C&D Landfill	0	0	0
Laraway Recycling & Disposal Facility	584,552	555	3,736
Liberty 3 LFGTE Plant - Wabash Valley Pow0		0	0
Liberty Landfill, LLC	1,068,958	996	18,151
Livingston Landfill	144,665	1,430	10,888
Momence Packing	0	0	0
Natural Gas & Pipeline Co. of America	25,000	14	38
Newton County Landfill	743,168	5,583	126,139
Peoria Packing Co.	0	0	0
Prairie View RDF	250,693	1,678	33,172
Prairie View- Will County RNG Plant	0	0	0
Tank Cleaning Solutions, LLC	205,120	273	3,792
Verdant Specialty Solutions US LLC	38,833	201	8,701
Zutat Feed Solutions	18,000	689	914
Totals:	3,317,989	17,263	213,617

		Kankakee Flows				Bradley Flows				Bourbonnais Flows				Aroma Park Flows					
	YTD Actual Flows	Actual Flows	% of Total	Estimated %	YTD Actual Flows	Actual Flows	% of Total	Estimated %	YTD Actual Flows	Actual Flows	% of Total	Estimated %	YTD Actual Flows	Actual Flows	% of Total	Estimated %	TOTALS	TOTALS	
5/31/2020	789.460	789.460	69.59%	64.37%	164.256	164.256	14.48%	13.22%	177.175	177.175	15.62%	22.09%	3.597	3.597	0.32%	0.32%	1134.488	1.000	
6/30/2020	1076.880	287.420	64.89%	64.37%	221.396	57.140	12.90%	13.22%	274.153	96.978	21.89%	22.09%	5.022	1.425	0.32%	0.32%	442.963	1.000	
7/31/2020	1362.330	285.450	61.84%	64.37%	284.103	62.707	13.59%	13.22%	386.186	112.033	24.27%	22.09%	6.391	1.369	0.30%	0.32%	461.559	1.000	
8/31/2020	1564.720	202.390	63.60%	64.37%	315.787	31.684	9.96%	13.22%	469.109	82.923	26.06%	22.09%	7.612	1.221	0.38%	0.32%	318.218	1.000	
9/30/2020	1750.230	185.510	60.84%	64.37%	350.402	34.615	11.35%	13.22%	552.734	83.625	27.43%	22.09%	8.760	1.148	0.38%	0.32%	304.898	1.000	
10/31/2020	1928.540	178.310	61.69%	64.37%	381.570	31.168	10.78%	13.22%	631.131	78.397	27.13%	22.09%	9.906	1.146	0.40%	0.32%	289.021	1.000	
11/30/2020	2100.530	171.990	60.39%	64.37%	411.927	30.357	10.66%	13.22%	712.454	81.323	28.56%	22.09%	11.018	1.112	0.39%	0.32%	284.782	1.000	
12/31/2020	2290.440	189.910	60.13%	64.37%	448.455	36.528	11.56%	13.22%	800.681	68.227	27.93%	22.09%	12.204	1.186	0.38%	0.32%	315.851	1.000	
1/31/2021	2504.930	214.490	59.77%	64.37%	488.313	39.858	11.11%	13.22%	903.640	102.959	28.69%	22.09%	13.732	1.528	0.43%	0.32%	358.835	1.000	
2/28/2021	2741.880	236.950	62.40%	64.37%	530.226	41.913	11.04%	13.22%	1003.243	99.603	26.23%	22.09%	14.996	1.264	0.33%	0.32%	379.730	1.000	
3/31/2021	3027.860	285.980	57.99%	64.37%	597.803	67.577	13.70%	13.22%	1141.533	138.290	28.04%	22.09%	16.321	1.325	0.27%	0.32%	493.172	1.000	
4/30/2021	3279.530	251.670	64.42%	64.37%	639.472	41.669	10.67%	13.22%	1237.733	96.200	24.62%	22.09%	17.450	1.129	0.29%	0.32%	390.668	1.000	
		3279.530	63.383%	64.37%		639.472	12.359%			1237.733	23.921%			17.450	0.337%		5174.185	12.000	
		Kankakee Flows				Bradley Flows				Bourbonnais Flows				Aroma Park Flows					
	YTD Actual Flows	Actual Flows	% of Total	Estimated %	YTD Actual Flows	Actual Flows	% of Total	Estimated %	YTD Actual Flows	Actual Flows	% of Total	Estimated %	YTD Actual Flows	Actual Flows	% of Total	Estimated %	TOTALS	TOTALS	
5/31/2021	346.570	346.570	65.99%	63.38%	60.497	60.497	11.52%	12.36%	116.826	116.826	22.24%	23.92%	1.290	1.290	0.25%	0.34%	525.183	1.000	
6/30/2021	634.090	287.520	66.76%	63.38%	103.540	43.043	9.99%	12.36%	215.789	98.963	22.98%	23.92%	2.460	1.170	0.27%	0.34%	430.696	1.000	
7/31/2021	930.320	296.230	70.61%	63.38%	137.501	33.961	8.10%	12.36%	304.021	88.232	21.03%	23.92%	3.562	1.102	0.26%	0.34%	419.525	1.000	
8/31/2021	1162.810	232.490	67.69%	63.38%	166.666	29.165	8.49%	12.36%	384.716	80.695	23.49%	23.92%	4.699	1.137	0.33%	0.34%	343.487	1.000	
9/30/2021	1369.410	206.600	66.65%	63.38%	193.616	26.950	8.69%	12.36%	460.262	75.546	24.37%	23.92%	5.600	0.901	0.29%	0.34%	309.997	1.000	
10/31/2021	1787.590	418.180	67.50%	63.38%	265.529	71.913	11.61%	12.36%	587.784	127.522	20.58%	23.92%	7.475	1.875	0.30%	0.34%	619.490	1.000	
11/30/2021	2068.130	280.540	65.59%	63.38%	314.880	49.351	11.54%	12.36%	684.120	96.336	22.52%	23.92%	8.937	1.462	0.34%	0.34%	427.689	1.000	
12/31/2021	2315.330	247.200	60.47%	63.38%	362.817	47.937	11.73%	12.36%	796.476	112.356	27.48%	23.92%	10.246	1.309	0.32%	0.34%	408.802	1.000	
1/31/2022	2567.800	252.470	64.39%	63.38%	408.584	45.767	11.67%	12.36%	889.113	92.637	23.63%	23.92%	11.455	1.209	0.31%	0.34%	392.083	1.000	
2/28/2022	2952.230	384.430	66.67%	63.38%	471.548	62.964	10.92%	12.36%	1016.840	127.727	22.15%	23.92%	12.972	1.517	0.26%	0.34%	576.638	1.000	
3/31/2022	3301.220	348.990	61.44%	63.38%	539.845	68.297	12.02%	12.36%	1165.653	148.813	26.20%	23.92%	14.880	1.908	0.34%	0.34%	568.008	1.000	
4/30/2022	3673.760	372.540	63.95%	63.38%	608.424	68.579	11.77%	12.36%	1305.059	139.406	23.93%	23.92%	16.901	2.021	0.35%	0.34%	582.546	1.000	
		3673.760	65.554%			608.424	10.857%			1305.059	23.287%			16.901	0.302%		5604.144	12.000	
		Kankakee Flows				Bradley Flows				Bourbonnais Flows				Aroma Park Flows					
	YTD Actual Flows	Actual Flows	% of Total	Estimated %	YTD Actual Flows	Actual Flows	% of Total	Estimated %	YTD Actual Flows	Actual Flows	% of Total	Estimated %	YTD Actual Flows	Actual Flows	% of Total	Estimated %	TOTALS	TOTALS	
5/31/2022	327.190	327.190	63.29%	65.55%	59.684	59.684	11.54%	10.86%	128.467	128.467	24.85%	23.29%	1.632	1.632	0.32%	0.30%	516.973	1.000	
6/30/2022	589.310	262.120	67.13%	65.55%	36.566	36.566	9.36%	10.86%	90.737	90.737	23.24%	23.29%	1.047	1.047	0.27%	0.30%	390.470	1.000	
7/31/2022	845.820	256.510	69.25%	65.55%	32.633	32.633	8.81%	10.86%	80.160	80.160	21.64%	23.29%	1.083	1.083	0.29%	0.30%	370.386	1.000	
8/31/2022	1073.610	227.790	68.05%	65.55%	27.078	27.078	8.09%	10.86%	78.806	78.806	23.54%	23.29%	1.089	1.089	0.33%	0.30%	334.763	1.000	
9/30/2022	1270.980	197.370	66.81%	65.55%	24.400	24.400	8.26%	10.86%	72.615	72.615	24.58%	23.29%	1.022	1.022	0.35%	0.30%	295.407	1.000	
10/31/2022	1270.980		0.00%		24.400		0.00%		72.615		0.00%		1.022		0.00%		0.000	0.000	
11/30/2022	1270.980		0.00%		24.400		0.00%		72.615		0.00%		1.022		0.00%		0.000	0.000	
12/31/2022	1270.980		0.00%		24.400		0.00%		72.615		0.00%		1.022		0.00%		0.000	0.000	
1/31/2023	1270.980		0.00%		24.400		0.00%		72.615		0.00%		1.022		0.00%		0.000	0.000	
2/28/2023	1270.980		0.00%		24.400		0.00%		72.615		0.00%		1.022		0.00%		0.000	0.000	
3/31/2023	1270.980		0.00%		24.400		0.00%		72.615		0.00%		1.022		0.00%		0.000	0.000	
4/30/2023	1270.980		0.00%		24.400		0.00%		72.615		0.00%		1.022		0.00%		0.000	0.000	
		1270.980	66.613%			180.361	9.453%			450.785	23.626%			5.873	0.308%		1907.999	5.000	

Flows
KRMA Treatment Facility
September, 2022

Date	PRECIPITA INCHES	PLANT MGD	Kankakee MGD	BOURB. MGD	BradleyFlow MGD	AromaPark MGD
9/1/2022	0.00	10.07	6.83	2.491	0.727	0.030
9/2/2022	0.00	9.83	6.71	2.361	0.729	0.034
9/3/2022	0.00	9.95	6.86	2.312	0.750	0.034
9/4/2022	0.07	9.52	6.39	2.365	0.722	0.034
9/5/2022	0.00	9.36	6.00	2.545	0.775	0.034
9/6/2022	0.00	9.48	6.26	2.461	0.725	0.035
9/7/2022	0.00	9.59	6.53	2.280	0.741	0.033
9/8/2022	0.00	9.57	6.58	2.221	0.738	0.032
9/9/2022	0.00	9.58	6.65	2.173	0.719	0.037
9/10/2022	0.00	9.50	6.48	2.204	0.779	0.037
9/11/2022	0.62	11.12	6.91	2.941	1.229	0.037
9/12/2022	0.33	11.30	7.11	3.121	1.034	0.034
9/13/2022	0.00	11.42	7.47	2.972	0.953	0.033
9/14/2022	0.00	10.91	7.28	2.703	0.895	0.031
9/15/2022	0.00	10.02	6.83	2.507	0.848	0.033
9/16/2022	0.00	9.57	6.26	2.442	0.834	0.035
9/17/2022	0.00	9.50	6.30	2.320	0.837	0.035
9/18/2022	0.82	9.28	5.95	2.339	0.953	0.035
9/19/2022	0.00	10.91	7.25	2.753	0.868	0.036
9/20/2022	0.00	11.03	7.78	2.429	0.781	0.039
9/21/2022	0.00	9.71	6.43	2.483	0.766	0.033
9/22/2022	0.00	9.59	6.50	2.308	0.748	0.031
9/23/2022	0.00	9.58	6.50	2.289	0.747	0.034
9/24/2022	0.00	9.50	6.41	2.264	0.790	0.034
9/25/2022	0.00	9.12	5.84	2.379	0.865	0.034
9/26/2022	0.00	9.20	6.10	2.299	0.765	0.032
9/27/2022	0.00	9.31	6.28	2.210	0.783	0.034
9/28/2022	0.00	9.41	6.40	2.206	0.774	0.033
9/29/2022	0.00	9.36	6.41	2.132	0.778	0.034
9/30/2022	0.00	9.16	6.27	2.105	0.748	0.035
Total	1.64	295.41	197.37	72.615	24.400	1.022
Average	0.05	9.85	6.58	2.421	0.813	0.034
Minimum	0.00	9.12	5.84	2.105	0.719	0.030
Maximum	0.62	11.42	7.78	3.121	1.229	0.039
# of data	30	30	30	30	30	30

IV-D-1

OCT 03 2022

NOTICE

October 3, 2022

Dear Kankakee, River Metropolitan Agency:

Burling Professional Cleaners, Inc. is performing an environmental response action at 120 North Cleveland Avenue Bradley, Illinois. The response action is being performed because of a dry cleaner chemical release. The response action consists of remediation of groundwater and soil contamination.

To protect human health, Illinois regulations require that Burling Professional Cleaners, Inc. either clean up groundwater contamination or demonstrate that the groundwater in the area of the release will not be used as potable water. (Groundwater is the water beneath the ground stored in the pores of soil and rock; some communities and homeowners pump this water out of wells to supply potable water. Potable means fit for human consumption including drinking, bathing, preparing food, washing dishes, and so forth.)

The Village of Bradley, IL has adopted an ordinance that strictly prohibits the human and domestic consumption of the groundwater beneath your property. Under Illinois regulations, a local ordinance that effectively prohibits the installation and use of potable water supply wells may be used as an institutional control to allow contamination above the groundwater ingestion remediation objectives to remain in the groundwater (35 Illinois Administrative Code 742.1015). (An institutional control is a legal mechanism for imposing a restriction on land use.) The Illinois Environmental Protection Agency (Illinois EPA) has determined that the ordinance adopted by the Village of Bradley meets the regulatory requirements for use as an institutional control. Burling Professional Cleaners, Inc. has requested and has been granted approval from the Illinois EPA to use the groundwater ordinance as an institutional control.

Your property, 1600 W BROOKMONT, is included in the area affected by the ordinance. This means that you cannot install or use a private, potable water well on your property. Based on the remediation objectives established in reliance on this ordinance, groundwater beneath your property may not be suitable for human or domestic consumption. Illinois regulations require that you be notified of these facts.

The ordinance is identified as ordinance number 0-7-14-3. If you wish to obtain a copy of the ordinance, please contact the Village of Bradley at 147 S. Michigan, Bradley, IL 60915 or call 815-936-5100. To learn more, please contact either Burling Professional Cleaners, Inc. at (815) 932-7811 or the Illinois EPA, Bureau of Land project manager, Tammy Smith, at 217-785-8410 or tammy.smith@illinois.gov. You may also obtain a copy of the complete Illinois EPA file on Burling Professional Cleaners, Inc. To do so, you will need to submit a written request with your signature to the Freedom of Information Act (FOIA) Officer, Illinois EPA, Bureau of Land, 1021 North Grand Avenue East, P.O. Box 19276, Springfield, Illinois 62794-9276. When requesting a copy of the file, please reference the file heading shown below:

LPC# 091020517/Kankakee County, Burling Professional Cleaners

120 North Cleveland Avenue; Bradley, Illinois

Illinois Drycleaner Environmental Response Trust Fund Site No. 0001037

FOIA requests may also be requested through the Illinois EPA's Web page:
<https://www2.illinois.gov/epa/foia/Pages/default.aspx>

Sincerely,

Burling Professional Cleaners, Inc.



1600 West Brookmont Blvd.
 Kankakee, IL 60901
 Phone: 815-933-0444
 Fax: 815-933-0104

Providing Wastewater Treatment to the Kankakee River Valley

Board of Directors October 24, 2022

Chairperson
Christopher Curtis
 Mayor
 City of Kankakee

Attn: Compliance Assurance Section
 Illinois Environmental Protection Agency
 1021 North Grand Avenue East
 Springfield, IL 62974-9276

Vice Chairperson
Paul Schore
 Mayor
 Village of Bourbonnais

Re: Special Condition 16
 National Pollutant Discharge Elimination System (NPDES) Permit No. IL0021784
 Kankakee River Metropolitan Agency (KRMA)

Secretary
Brian Stump
 Mayor
 Village of Aroma Park

To Whom It May Concern:

Robert Romo
 Financial Director
 Village of Bradley

In accordance with Special Condition 16 of KRMA's NPDES Permit, KRMA has compiled the enclosed Capacity, Management, Operations, and Maintenance (CMOM) Plans prepared by KRMA's four satellite member municipalities: City of Kankakee and Villages of Aroma Park, Bourbonnais, and Bradley. Also enclosed are KRMA's letter to IEPA dated September 6, 2019, and IEPA's response letter dated February 19, 2020, which provide additional background and details regarding KRMA's CMOM requirements.

Danita Swanson
 Alderman
 City of Kankakee

Larry Osenga
 Alderman
 City of Kankakee

Please note that KRMA does not own or operate any portions of the sanitary and combined sewers tributary to KRMA. Accordingly, there are no assets for which KRMA can develop a management strategy or prepare a CMOM plan. It is not possible for KRMA to have any sanitary sewer overflows to identify and report. KRMA's first letter to IEPA regarding Discharge 003 and CMOM was dated September 22, 2011. As set forth in various letters and e-mails since then, KRMA has already undertaken the necessary steps to eliminate overflows from the combined sewer interceptor to its plant. It has also significantly upgraded the pumping capacity at the plant so that currently there are no forecasted overflows from the interceptor or the pumping station, has increased the storage capacity of the equalization basin, and has added disinfection and dechlorination for Discharge 003. This is how the system was designed and permitted to function as a flow equalization and treatment unit. It is not an emergency high-level outfall, it is a legal, treated, CSO-related bypass as defined in United States Environmental Protection Agency's (USEPA) 1994 CSO Control Policy.

Steven Hunter
 Representative
 City of Kankakee

Staff

Executive Director
Dave Tyson, P.E.

Plant Superintendent
Arthur Strother

Please call us at (815) 933-0444 if you have any questions or need any additional information.

Sincerely,

KRMA



October 10, 2022

Dave Tyson, P.E., Executive Director
Kankakee River Metropolitan Agency
1600 W. Brookmont Blvd.
Kankakee, Illinois 60901

RE: *Request for KRMA Documentation*

The Village of Bradley has retained Kimley-Horn to evaluate and advise the Village on the recent proposal by the Kankakee River Metropolitan Agency (KRMA) for capacity expansion improvements at the Regional Wastewater Treatment Facility (WWTP). The proposed improvements will provide additional capacity to treat loading, i.e., wastewater constituents, while maintaining the permitted 25 million gallons per day flow capacity. The concept level cost estimates presented by the KRMA's engineering consultant dated April 21, 2022, range from \$43.5 million to \$80.5 million depending on the alternative selected.

For Kimley-Horn to assist the Village of Bradley in this process, we request the documentation listed below from the KRMA. We are seeking this information in its totality within thirty (30) days of the date of this request. Your cooperation and prompt response are greatly appreciated and will help avoid delays in completing our efforts to assist a KRMA member community.

Documentation requested from the KRMA:

Management

- 1) Current Inter-Governmental Agreement and change history (past agreements)
- 2) Current By-Laws
- 3) Board of Directors meeting minutes – Past five (5) years
- 4) List of current vendors/consultants utilized for providing operational and professional services and their selection and contract renewal process

Operations

- 1) Fiscal Year 2022-2023 Annual Budget
- 2) Reconciled Revenue and Expenses – Past five (5) years
- 3) Wastewater cost for service to each stakeholder – Past twelve (12) months
- 4) Rate increase history – Past five (5) years
- 5) Record drawings of the existing WWTP
- 6) Current National Pollutant Discharge Elimination System (NPDES) Permit
- 7) Current Capacity, Management, Operations and Maintenance (CMOM) plans for each owner/operator of collection systems tributary to the KRMA
- 8) Current Pretreatment Program Plan/Procedures
- 9) Pretreatment Program Activity Report to Illinois Environmental Protection Agency (IEPA) for April 28, 2022 reporting period

- 10) List of existing Significant Industrial Users (SIUs) that are discharging to the WWTP and their locations
- 11) Existing SIU Pretreatment agreements and records
 - a) SIU discharge data (wastewater characteristics/effluent parameters) – Past one (1) year
 - b) Invoices issued to SIUs – Past one (1) year
 - c) Inspection history
- 12) Future SIUs that are under consideration and their wastewater characteristics
- 13) Flow and loads for the past 2-years
- 14) Monitoring Results (including biomonitoring) provided to IEPA – Past two (2) years
- 15) WWTP Process Model (e.g., BioWin Model)
- 16) Available capacity to accept new flows and loads

Capital Improvements

- 1) Most recent Capital Improvement Plan (1 yr., multi-yr.)
- 2) WWTP Capacity Expansion conceptual planning documents including cost estimates
- 3) Process for assessing rate increases based on the conceptual level cost estimates

Regulatory Compliance

- 1) Description of the factors triggering the WWTP expansion
- 2) Notices of violation or non-compliance issued to KRMA – Past two (2) years
- 3) Notices of violation or non-compliance issued by KRMA to users – Past two (2) years
- 4) Local Limits Evaluation and subsequent submittals to EPA

After review of the above-mentioned documentation, we will contact you if we need additional information. With Kimley-Horn, you should expect more and will experience better. Please contact me at (224) 214-1550 or Peter.Stoehr@kimley-horn.com should you have any questions.

Sincerely,



Peter A. Stoehr, P.E.
Senior Project Manager

Cc: Mayor Christopher Curtis, KRMA Chairman / City of Kankakee
Rob Romo, KRMA Director / Village of Bradley
Mayor Michael Watson, Village of Bradley
Uma Vempati, Kimley-Horn