

WELCOME TO THE PARISH OF ST JOSEPH, PONTEFRACT
 Incorporating the Churches of St. Michael, Knottingley & St. Joseph, Tanshelf

Parish Priest: Canon Tim Wiley

Pastor Emeritus: Fr. Bernard Funnell

Registered Charity No. 249404

St Joseph's Presbytery, Back Street, Pontefract, WF8 1NL

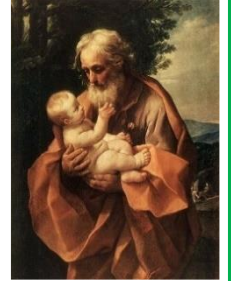
T: 01977 702297

Email: office.stjoseph.pontefract@dioceseofleeds.org.uk

Website: www.parishofstjoseph.co.uk

Follow us on: Facebook (parishofstjoseph) and Twitter (@ParishofStJ)

LIMITED OPENING OF ST JOSEPH'S & ST MICHAEL'S FOR PRIVATE PRAYER AND MASS



w/c Sunday 23 rd August 2020 – 21st Week of Ordinary Time Canon Tim will say Mass each day for the following Intentions.			Open for Parishioners to attend Mass	Open for Private Prayer
	Feast	Mass Intention		
Sunday		People of the Parish		St Joseph's 10am to 12 noon
Monday	St Bartholomew	Owen Grant (RIP)	St Joseph's 10am to 11am	
Tuesday		Elizabeth Peshkeleina		
Wednesday		Charles Joseph Saul (RIP)	St Joseph's 11am to 12noon	
Thursday	St Monica	Intentions of Fr Anthony Fenton (Anniversary of Ordination)		
Friday	St Augustine of Hippo	Clare Atkinson (RIP)	St Joseph's 6pm to 7pm	
Saturday	The Passion of St John the Baptist	Dead List	St Michael's 11am to 12 noon	

CONFESSIONS: Before Mass at St Joseph's on Monday, Wednesday and Friday and St Michael's on Saturday. During Private Prayer at St Joseph's on Sunday: 10am to 10.30am and 11.30am to 12noon. Due to COVID restrictions, Confessions cannot be heard in a confined space, because of that, Confessions will be heard at St Joseph's on the Sanctuary and at St Michael's by Our Lady's Statue.

LATELY DEAD

Please pray for Jennifer Lynch and all who have died recently.

May they rest in peace and may all who mourn them be comforted.

PRAYERS FOR THE SICK

Please pray for: Kathleen Bourke, Eileen Symons, Alberta Burns, Harry Clamp, And all those affected by the Coronavirus.

MASS INTENTIONS RECEIVED THIS WEEK.

Special Intention, Jim Walsh (RIP), Anne Ryan (RIP), Claire Atkinson (RIP), Bob Carr (RIP).

- Mass Intentions can be sent via post to the Presbytery. If you wish a particular day, please mention.
- Mass on Sunday is always said for the intentions of all the Parish and Parishioners.
- Please state the name and Intention (e.g. Sick, Anniversary, RIP, Birthday etc).

OPENING ST MICHAEL'S FOR MASS.

Approval to open St Michael's for Mass has now been given and Canon Tim will say Mass there each week starting from Saturday 29th August. Church will open at 11am and Mass will start at 11:15am.

The benches are separated at 2 metres, but the seating is labelled at 1M. We will therefore be applying the 1M+ rule and requiring the wearing of Face Coverings, subject to the official exceptions. Entry and exit will be by the main doors at the front of church and movement around the church will be much more open. Visitors are therefore asked to follow the guidance of the Stewards when going to their seat and to remain in their seat at the end of Mass until a Steward advises that they can leave church.

Places can be booked to attend Mass by using the Telephone Booking System (07709 091786) which is open on Thursday and Friday between 10am and 12 noon. Due to the increased capacity provided by the opening of St Michael's, it becomes more important that as many people as possible use the booking system so we can ensure that sufficient Stewards are assigned to our churches to ensure the safety and wellbeing of all who enter our churches.

FACE COVERINGS

Everyone coming to church, whether for Mass, Private Prayer or other Sacraments must wear a face covering unless they are children under the age of 11 or exempt from doing so for medical reasons. Please ensure that you have a face-covering/mask with you and put it on before entering church.

VOLUNTEERS

Increasing the number of Masses available for parishioners to attend is a welcome move. But to ensure the safety and wellbeing of those attending we will need more volunteers to come forward to act as Stewards.

If you can help, then please let us know the days/times you would be available and whether you can be available at St Joseph's, St Michael's or both churches by emailing the Parish office at: office.stjoseph.pontefract@dioceseofleeds.org.uk

Understandably in these difficult times, there is a process we will have to go through before you can officially 'sign up' but we will respond to your email with those details.

RED MISSION BOXES & WHITE LENTEN ALMS BOXES

If you have any of these boxes and wish to pass on your collections, then you can leave them at the back of St Joseph's or St Michael's when they are open.

The funds in the Red Mission Boxes will be passed on to the APF and any funds in the Lenten Alms boxes will be passed to Catholic Care.

MAKING AN OFFERING TO OUR PARISH

We are most grateful to those who have continued to give to the Parish by bringing their Offertory Envelopes to Church, by Standing Order or other 'giving' means.

Donations can also be given by using the ONLINE PARISH OFFERTORY via a link on the Parish Website, or by sending a TEXT to **CHURCH STJP** to **70500** contribute £5 to our Parish.

Details of all the methods of making an offering to the Parish are provided on our website at:

<https://parishofstjoseph.co.uk/offertory>

If you would like to receive a copy of the Bulletin by email, then please send an email to:
office.stjoseph.pontefract@dioceseofleeds.org.uk

BOOKING A PLACE FOR MASS

**On Thursday or Friday between
10 am and 12 Noon
Call 07709 091786**

Someone will answer your call and advise you if a bench is available to meet your request.

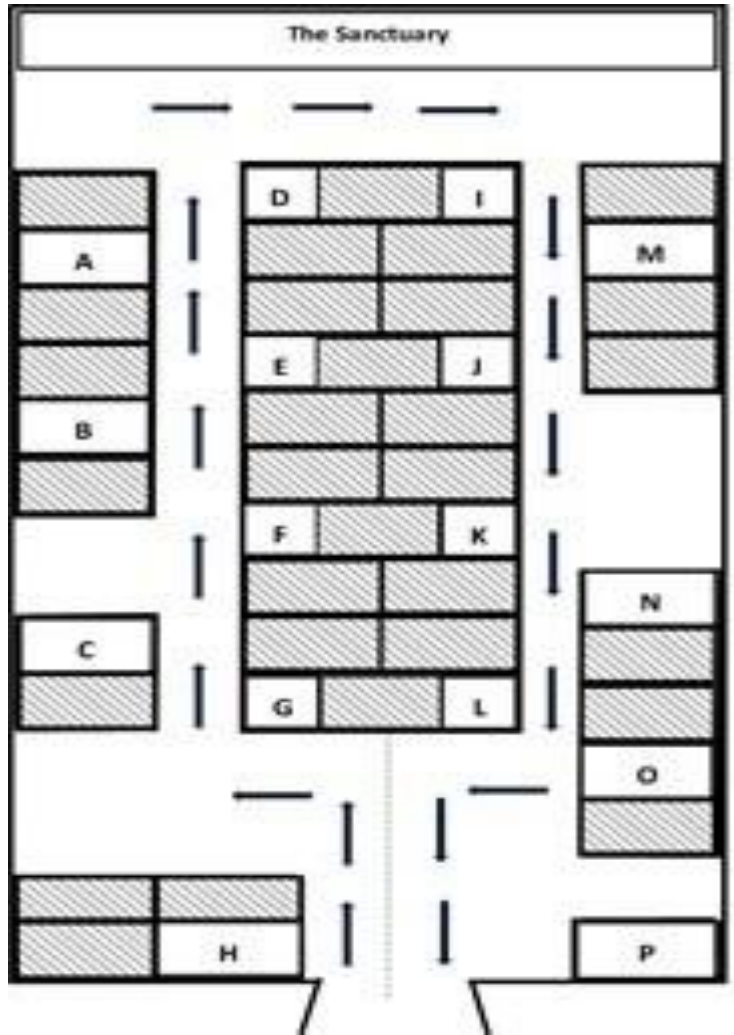
You will be told which bench has been allocated to you.

You will be asked to provide your name and a telephone contact number.

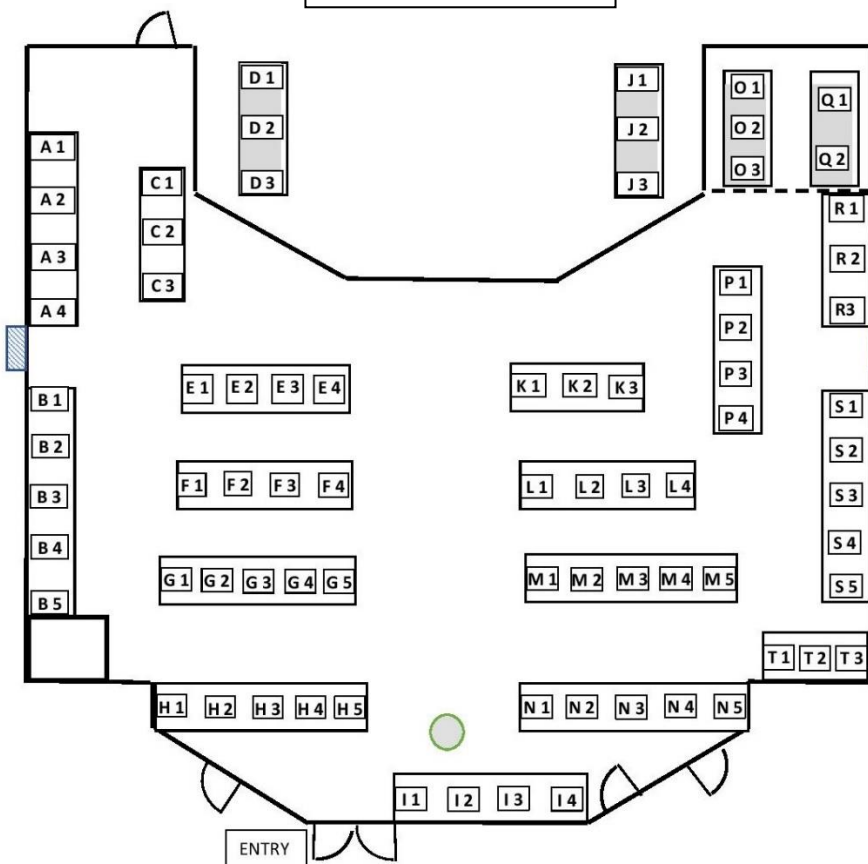
When you arrive at Church, give your name to the Steward so that you can be guided to your place.

If no bench is available to meet your request, your details will be held and if a bench becomes available later you will be called back and advised which bench has been allocated.

St Joseph's



St Michael's



OUR CHURCHES OPEN FOR MASS AND PRIVATE PRAYER

Everyone coming to church must wear a face covering unless they are children under the age of 11 or exempt from doing so for medical reasons.

There will be Stewards present in church during the time it is open who will help and guide visitors. Please follow any advice and guidance they give.

Entrance to St Joseph's will only be by the door at the end of the footbridge next to the school and to St Michael's through the main doors at the front.

There will be no Toilet facilities available at either church in order to prevent any risk of transmission of infection.

Alcohol Hand Gel will be available and must be used by visitors to sanitise their hands on entry and exit from the church.