

WELCOME TO THE PARISH OF ST JOSEPH, PONTEFRACT

Incorporating the Churches of St. Michael, Knottingley & St. Joseph, Tanshelf

Parish Priest: Canon Tim Wiley

Pastor Emeritus: Fr. Bernard Funnell

Registered Charity No. 249404

St Joseph's Presbytery, Back Street, Pontefract, WF8 1NL

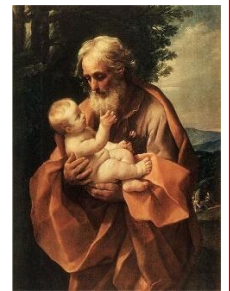
T: 01977 702297

Email: office.stjoseph.pontefract@dioceseofleeds.org.uk

Website: www.parishofstjoseph.co.uk

Follow us on: Facebook (parishofstjoseph) and Twitter (@ParishofStJ)

LIMITED OPENING OF ST JOSEPH'S FOR PRIVATE PRAYER (SEE DETAILS BELOW)



Sunday 28th June 2020 - 13th Week of Ordinary Time

Canon Tim will say Mass each day for the following Intentions.

All Masses are said in private.

St Joseph's
Open for
Private
Prayer

Sunday	St Peter & St Paul	People of the Parish	10am to 2pm
Monday		Laurence & Mary Wiley (Wedding Anniversary)	
Tuesday		Francis Ashcroft (RIP)	
Wednesday		Fr Michael Krychiwkyj (Anniversary)	11am to 1pm
Thursday		St Joseph's School	
Friday	St Thomas, Apostle	In Thanksgiving (MW)	
Saturday	Our Lady's Saturday	Dead List	

Mass intentions received this week.

Charles Joseph Saul, Audrey Pinto (RIP), Kathleen Grant (RIP), Jim Cowan (Ann), Rodolfo Acosta (RIP), Isabel Robert (RIP), Tily Alfaro (RIP)

- Mass Intentions can be sent via post to the Presbytery. If you wish a particular day, please mention.
- Mass on Sunday is always said for the intentions of all the Parish and Parishioners.
- Please state the name and Intention (e.g. Sick, Anniversary, RIP, Birthday etc).

Prayers for the sick

Please pray for:
Eileen Symons
Alberta Burns
Harry Clamp

And all those affected by the Coronavirus.

LATELY DEAD

Please pray for Audrey Pinto,
and all who have died recently.

May they rest in peace and may all who mourn them be comforted.

Thank you for donations in memory of Kathleen Grant which totaled £111.50

CHURCH OPENING

A big thank you for all the preparation and work and help to get St Joseph's opened on Sundays and Wednesdays. We will review these times and confirm arrangements for each week in advance via the Parish Website, Social Media and in this Weekly Parish Bulletin. Consideration is being given to an evening opening so that those who may have returned to work also have the opportunity to visit our church. Details to follow next week.

If you would like to receive a copy of the Bulletin by email, then please send an email to:
office.stjoseph.pontefract@dioceseofleeds.org.uk

ST JOSEPH'S – OPEN FOR PRIVATE PRAYER

There will be 2 Stewards present in church during the time it is open who will help and guide visitors. Please follow any advice and guidance they give.

Entrance will only be by the door at the end of the footbridge next to the school. Entry by the steps at the bottom of Crab Hill will not be permitted.

A signposted 'one way' system will be in place in the church. Benches have been taped off to ensure 2 metre social distancing can be maintained inside the church. Some benches will be suitable for individuals, others for up to 3 people from the same household. There will also be a limit on the total number of people in church at the same time. Should the church reach its limit then a "one in, one out" policy will be adopted.

There will be no Toilet facilities available in order to prevent any risk of transmission of infection.

Alcohol Hand Gel will be available and must be used by visitors to sanitise their hands on entry and exit from the church.

The wearing of cloth face coverings by visitors to church will not be made compulsory and is a choice made by themselves. Visitors should not see their voluntary use disrespectful to prayer or the sacred place.

Our school will be open on Wednesdays, so visitors need to take care when approaching church and ensure social distancing requirements are maintained.

These measures we have put in place may seem burdensome, or even a little daunting. They are however necessary to ensure the safety and well-being of all who wish to use our church for private prayer.

If you have any questions or comments then please get in touch by emailing the parish office at office.stjoseph.pontefract@dioceseofleeds.org.uk

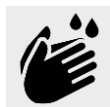
**While visiting this Church
please protect yourself and others**

OBSERVE SOCIAL DISTANCING



ONLY SIT IN MARKED SEATS

BEFORE AND AFTER YOUR VISIT:



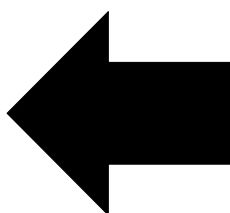
SANITISE YOUR HANDS



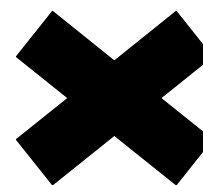
**WIPE ANY SURFACES
YOU HAVE CONTACT
WITH**

ENTRANCE

Keep Left



EXIT ONLY



**PROCEED IN A CLOCKWISE
DIRECTION ON ENTRY AND EXIT**

**Follow the advice given by
the Stewards**

MAKING AN OFFERING TO OUR PARISH - Thank you to everyone who has made donations to our parish. Information about how you can donate is on our Website. <https://parishofstjoseph.co.uk/offertory>