



DWX

**Automated Housing Access.
Intelligently Secured Spaces.**



Automated Housing Access. Intelligently Secured Spaces.

Housing Access Automation

With DAX, your housing management system can be seamlessly integrated into your card access system, automating the assignment and management of access for students based on live housing contract data.

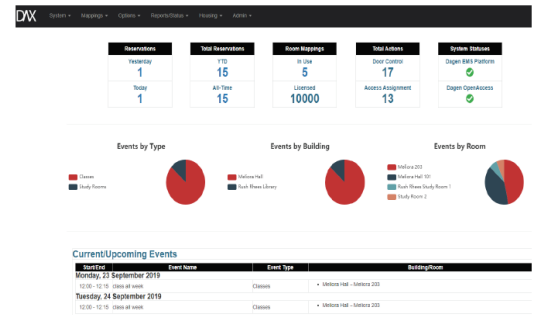
The typical process of running once per semester or daily data extracts and then manually managing room changes, cancellations, early check-ins, and late check-outs is fully automated based on your configuration.

DAX Intelligent Housing-Driven Access Assignment monitors your housing system using manufacturer-supported APIs and manages temporary access level assignments in your access control system to ensure a robust, scalable, supportable integration.

Safer, More Efficient, Intelligent Facilities.

- Students are assigned access in advance of check-in but access is only enabled upon the scheduled check-in date.
- Access levels are automatically assigned and removed for room changes based on your configured move in and move out time parameters
- Configure whether to assign access based on room, suite, building, area using the intuitive automatic access mapping feature.
- Comprehensive activity monitoring, auditing, and reporting for real-time visibility and forensic analysis.

Unparalleled security through intelligent integration.



DAX's Web Configuration Application

Key Features

- Automatic access management
- Assign access by room, suite, floor, building, or area
- Comprehensive auditing, and reporting
- Uses manufacturer APIs

DAX