



LENSEC



Perspective
VMS[®]

See The Difference In **2020**

LENSEC



Perspective
VMS[®]



ABOUT **LENSEC**

HEADQUARTERS:
Houston, TX USA

ESTABLISHED:
1998

PRODUCT:
Perspective VMS®
Video Surveillance
Software for Physical
Security

LOCATIONS:
Houston, TX
San Antonio, TX
Austin, TX
Pittsburgh, PA
Washington, DC
Orlando, FL
Knoxville, TN
Amman, Jordan
Riyadh, Saudi Arabia

Founded in 1998, **LENSEC** is a pioneer in IP security video. We are a trusted security partner with experience around the world. **LENSEC** is experienced helping partners working with customers in various markets, including higher education, K-12 education, public safety, government, healthcare, critical infrastructure, commercial, and more. **LENSEC** physical security experts help VAR partners and their customers develop enterprise solutions for complex physical security projects using our flagship software, **Perspective VMS®**.

LENSEC manufactures enterprise-level video management software (VMS) designed for surveillance. **Perspective VMS®** is a browser-based software that streams and captures IP security camera video and manages IP security devices. **PVMS** uses HTML5 interactive features in a thin-client application that is designed to provide real-time situational awareness.

Fleet Management, Access Control, Video Analytics, and other advanced features integrate well into **Perspective VMS®**, creating an ability to track behavior and movement while monitoring live and recorded video.



MAPS

Maps provide real-time situational awareness and visual familiarity of the site or entire enterprise. The main feature is the ability to interact with IP cameras or devices and identify their locations from the dynamic map interface.



FEATURES

GLOBAL SEARCH

Users can quickly find and retrieve maps, cameras, tags, or other metadata.

SITUATIONAL AWARENESS

Map-viewing, with cameras marked, enhances situational awareness for first responders and new users on the system.

CAMERA DOCK

Users can drag-and-drop cameras from any map into the dock for a heads-up view. This is perfect for situational awareness.

MULTI-LEVEL MAPS

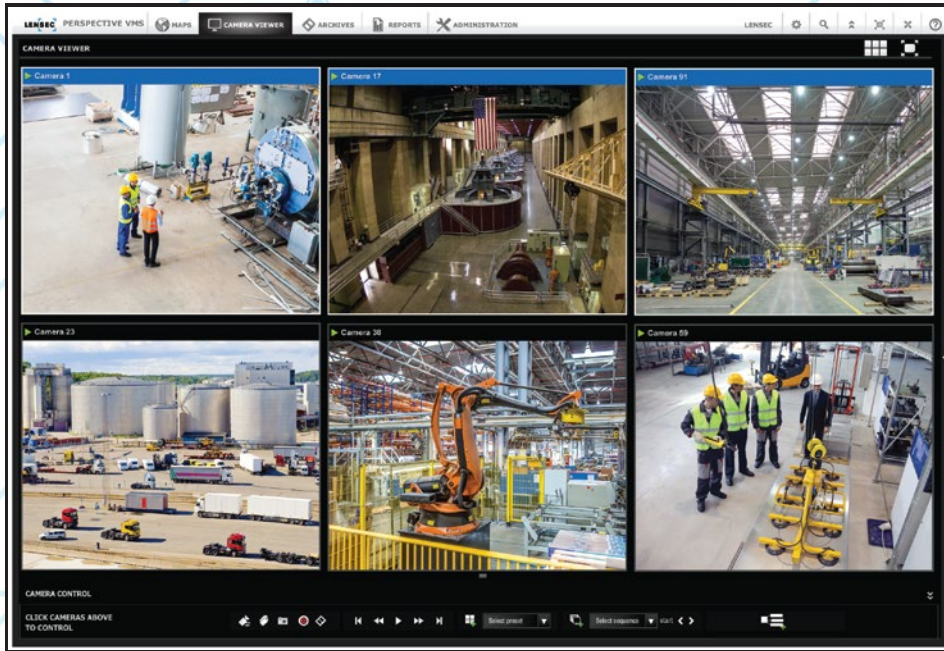
Map-nesting and layers provide the ability to navigate multiple floors or site locations.

MAP LAYERS

Users can quickly show or hide logically-grouped elements on maps for focused viewing.

CAMERA HOVER

Users may hover over a camera icon on the map display to pop-up live video from the map page, enhancing awareness.



CAMERA VIEWER

Camera Viewer provides live video monitoring with customizable display settings, featuring multi-view presets, PTZ controls, and live recording. Users may create sequences of multiple camera views and view arrangements.

FEATURES

DYNAMIC RESOLUTION

Video auto-adjusts to an appropriate size, optimizing the video stream.

INSTANT PLAYBACK

Users can rewind and playback recorded video without leaving the camera viewer, and continue playing simultaneous live video.

DYNAMIC PTZ CONTROL

Users may actively pan, tilt, or zoom PTZ cameras from the PVMS interface using software controls.

NEIGHBORING CAMERAS

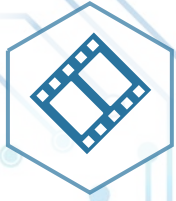
Activity may be tracked from camera to camera through a site when monitoring video.

MULTI-VIEW MONITOR

Users may choose from multiple camera view layouts and call up live video from multiple sites within the same viewing window.

EASY NAVIGATION

Users gain full-access to most navigational Perspective VMS® features from the camera viewer.



ARCHIVES

Archives are designed to manage recorded video and provide tools for playback, navigation, and forensic analysis. Archive extraction creates a standard media file to be downloaded for playback.



FEATURES

DYNAMIC TIMELINE

The navigable timeline enables thumbnail review of playable video.

FAST-FIND SEARCH

In Archives, motion video from the recorded video is searchable, with Fast-Find identifying movement in a user-defined area.

ARCHIVE LOCKING

Administrators may lockdown important segments of video to prevent deletion from the archives.

MULTIPLE EXTRACTIONS

Users may extract video from multiple camera feeds simultaneously.

TIME-LAPSE VIDEO

Users can create time-lapse videos by capturing incremental frames per hour in a playable video extraction.

REAL-TIME EXTRACTION

Users can create a recording for download with the click of a button when viewing live or recorded video.



FLEET

Security Management is moving beyond stationary buildings and closed sites. In today's changing security environment, everyone has security challenges for transportation. PVMS Fleet Security Management is here to help.



FEATURES

GIS MAPPING

GIS-mapping for vehicle locations can be associated with archive recordings, marking bus locations as part of the logged metadata.

VEHICLE SENSOR I/O

Vehicle Sensor I/O Integration captures activity from equipment, such as blinkers, brakes, bus stop arms, speed, etc.

RUGGED HARDWARE

LENSEC endorses rugged hardware including cameras, IP devices, and on-board servers to withstand extreme conditions.

BUILT-IN WI-FI

Built-in Wi-Fi enables offload of video to central system archives when the vehicle returns to base.

BUILT-IN CELLULAR

Built-in Cellular Communication equips users with the ability to monitor live or recorded video from vehicles while in the field.

UNIFIED SECURITY PLATFORM

A Unified Security Platform in PVMS enterprise security software enables fleet security and infrastructure security to be managed centrally.



REPORTS

Reports provide useful information including system health status, camera status, and user login activity. Admins can launch filtered or configurable reports that show system info, user audit trails, and export those reports in several common formats.

FEATURES

ACTION REPORTS

Acknowledge Response Reports for event response provides historical information.

AUDIT REPORTS

Audit Reports display tracking information on user activities in Perspective VMS[®]. All user activity is logged for later review.

CONFIGURATION REPORTS

PVMS Configuration Reports make system data easily accessible, including group permissions and camera details.

EQUIPMENT STATUS REPORTS

Detailed equipment info and real-time status reports of cameras and servers is available.

ACCOUNT REPORTS

Reports on user accounts include group assignments, last login details, and status of their account are accessible in PVMS.

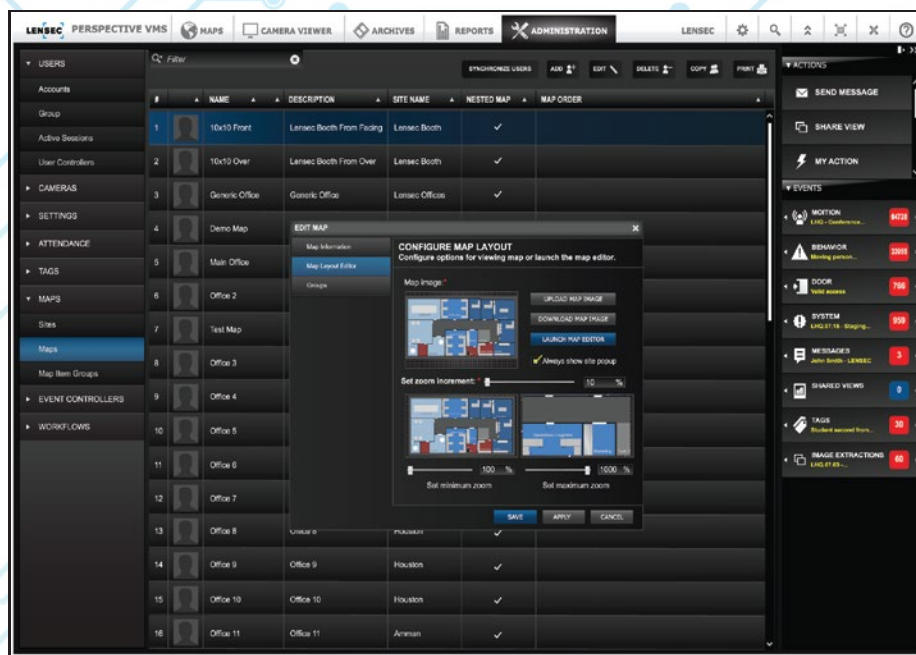
ANALYTICS & WORKFLOW REPORTS

Video Analytics and Workflow Reports provide useful data about behavior and actions/events in PVMS, including associated users and history.



ADMIN TOOLS

Administration provides an intuitive interface for managing and configuring groups, users, devices, and system parameters. These Administrative tasks happen in the web browser via a secure login while connected to the network.



FEATURES

DYNAMIC PERMISSIONS

Administrators can assign specific permissions for various types of users and groups.

ACTIVE DIRECTORY

PVMS supports migration and configuration of groups and users imported from Active Directory.

CAMERA STATUS

Administrators can discover current camera status and generate reports.

CAMERA DISCOVERY

System Admins can find and add ONVIF cameras from the network.

ARCHIVE STORES

Administrators may dynamically configure archived video across one or more storage drives, providing a balanced storage structure.

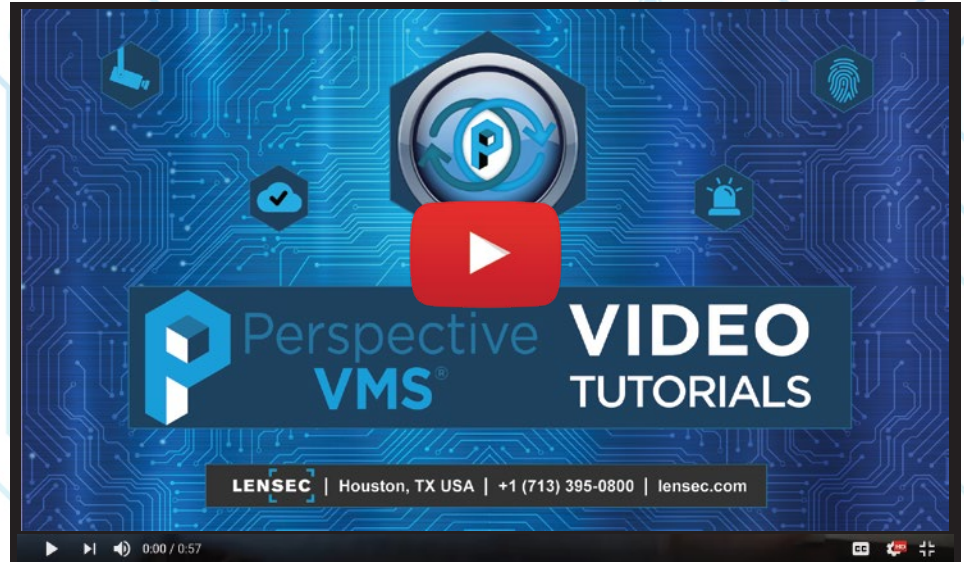
MOST CAMERA MODELS SUPPORTED

PVMS offers native integration with most modern camera models.



TRAINING

Perspective VMS® Training and video tutorials are essential to our staff and partners. We strive to provide sales and technical classes for partners & end-user training for customers.



FEATURES

ONLINE TRAINING ACADEMY

LENSEC offers free online training for partners and end-users covering basic and advanced info.

TECHNICAL CERTIFICATION

Multiple technicians need to know installation techniques and best practices for PVMS.

SALES TRAINING

LENSEC training staff will teach your sales reps the features and selling techniques they need to be successful in selling PVMS.

END-USER TRAINING

End-user training is available, providing partner staff with support from LENSEC team members on software use and configuration.

ONLINE VIDEO TUTORIALS

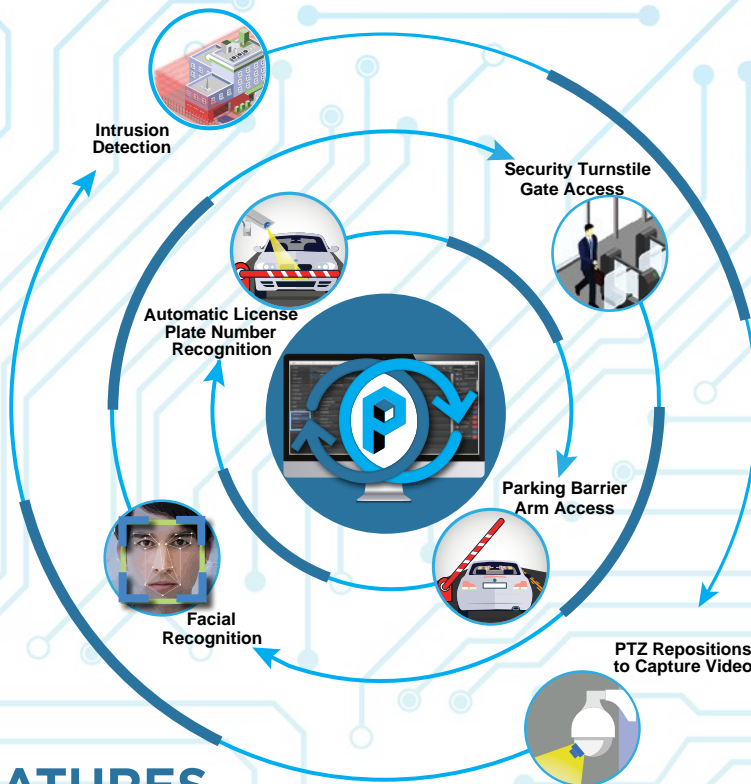
- System Layout
- User Preferences
- Editing Custom Maps
- Custom Map Layers
- Fleet Management
- Camera Arrangements
- Image Capture
- Video Extraction
- Video Tagging
- Administration
- Action Panel
- Installation
- And More



WORKFLOWS

Workflows leverage “If-This-Then-That” logic, enabling users to integrate physical and logical inputs into on screen display actions or other notification alerts through associating objects, triggers, and actions.

For example, facial recognition can trigger access through an access control entry point, or a license plate camera with ALPR can read a vehicle plate and open a parking barrier arm to allow vehicle access.



FEATURES

TRIGGER OPTIONS

- 🔧 Custom Action Buttons
- 🔧 Login Notifications
- 🔧 Camera Input Triggers
- 🔧 Upon Camera Events
- 🔧 Upon IP Device Events
- 🔧 Upon Alarm or Perimeter Alerts
- 🔧 Upon System Warnings
- 🔧 Custom Triggers

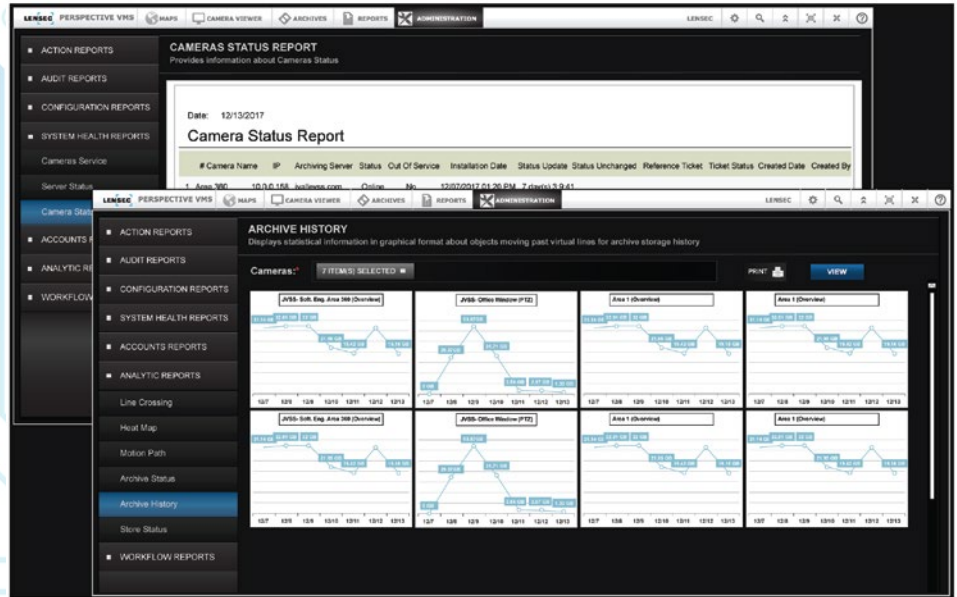
ACTION OPTIONS

- 🔧 Auto-Adjust Archive Configuration
- 🔧 Trigger Camera Outputs
- 🔧 Generate Email Notifications
- 🔧 Go To PTZ Presets
- 🔧 Create Real-Time Extractions
- 🔧 Adjust Camera Frames per Second
- 🔧 Adjust Streaming Resolutions
- 🔧 Custom Actions



SYSTEM HEALTH

System Health offers alerts and reports on servers, applications, and Perspective VMS® services. Applications and reports help identify system faults.



FEATURES

ARCHIVE STATISTICS

Perspective VMS® generates a report showing statistical archiving trends.

AUDIT TRAIL

The system provides an internal auditing report regarding user operation actions.

IN-SYSTEM ALERTS

System health notifications alert users in real-time about networked servers, cameras, and IP-devices.

EMAIL NOTIFICATIONS

Email notifications may be created to be delivered automatically.

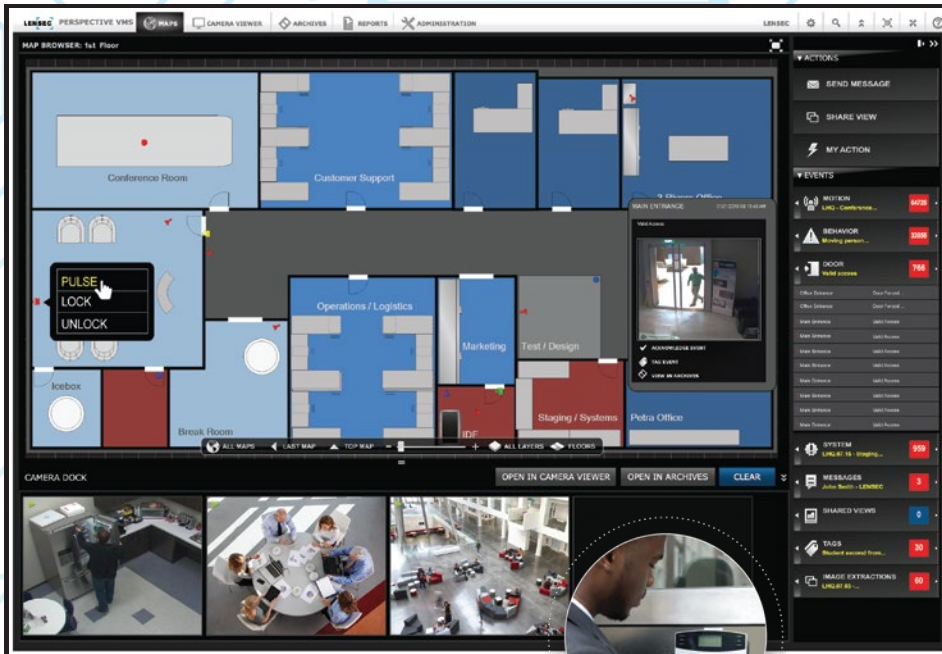
REMOTE STATUS MONITORING

Remote Status Monitoring is a professional service option by LENSEC Customer Service, providing proactive monitoring of camera and server status. Remote diagnosis and offsite remedies for repair are attempted, ensuring systems remain operational.



INTEGRATION

Integration of Perspective VMS® with other security software and hardware extends the capabilities of managing the entire security enterprise. When functions of the security components are unified in one surveillance platform, the system is easier for the user to manage.



FEATURES

ACCESS CONTROL

Perspective VMS® integrates with several access control solutions, including tight bi-directional integration with key technology partners. As seen in the image above, access control triggers are available in Perspective VMS®, providing user function of lock and pulse features. PVMS catalogs events, associates surveillance video, and provides door control within the unified security platform.

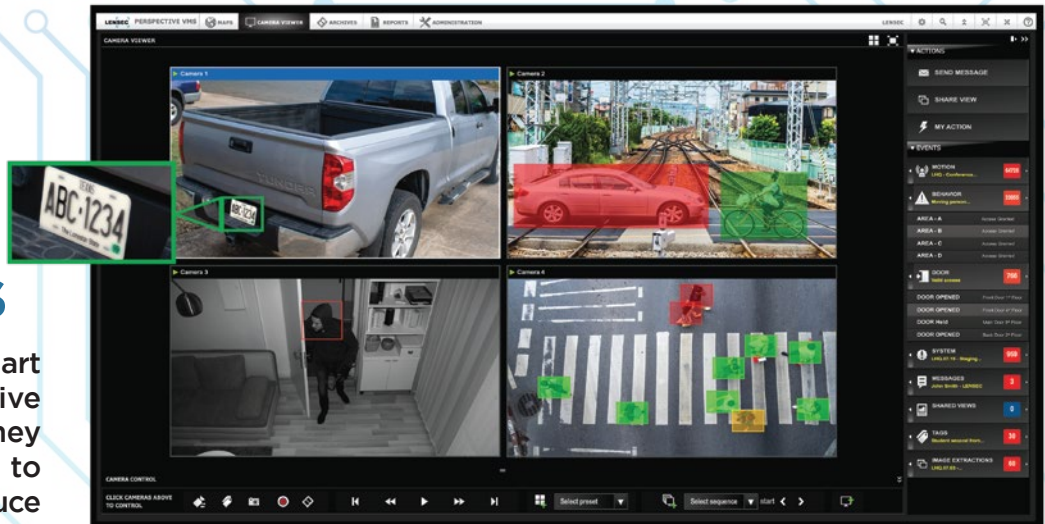
SECURITY INTEGRATION

- ◆ 3rd Party Software & Hardware
- ◆ Attendance Systems
- ◆ Complete Video Analytics Suite
- ◆ Secure Ops Center Video Wall
- ◆ Megapixel Security Cameras
- ◆ Automatic License Plate Recognition
- ◆ Radio Frequency Identification
- ◆ Facial Recognition
- ◆ Intrusion Detection
- ◆ System Health Monitoring
- ◆ Integrated Barriers
- ◆ Workflows: If-This-Then-That Logic
- ◆ Drone Integration
- ◆ Biometric Entrance/Exit
- ◆ Security Fences
- ◆ Cloud-Ready
- ◆ Fleet Management
- ◆ Custom Software Development
- ◆ Student Campus Card Integration
- ◆ Video Watermarking
- ◆ Visitor Management
- ◆ Hardware Agnostic Software



VIDEO ANALYTICS

Video Analytics use smart algorithms for effective decision-making. They generate smart alerts to trigger actions and reduce false alarms.



FEATURES

ALPR

Automatic License Plate Recognition captures images of vehicle plates and compares info against a database.

FACIAL RECOGNITION

Using biometrics, **Facial Recognition** enables the ability to detect and identify faces catalogued in a database.

INTRUSION

The **Intrusion** analytic detects and signals when defined objects cross a virtual line in a certain direction.

MORE ANALYTICS

- ❖ Gate Flow
- ❖ Area Counting
- ❖ Occupancy Rate
- ❖ Hot Zones
- ❖ Loitering
- ❖ Left Object
- ❖ Stolen Object
- ❖ ATM Detection
- ❖ Wrong Way
- ❖ Stationary Vehicle
- ❖ Counting
- ❖ Face Detection
- ❖ Slip & Fall
- ❖ Vehicle Speed

WHY CONSIDER



PVMS IS PURPOSE-BUILT

HERE ARE A FEW GOOD REASONS

- ▶ Perspective VMS® is built with VAR partner and end-user input, enhancing user functionality.
- ▶ Designed using open-architecture, PVMS is ready for any IP security devices.
- ▶ PVMS is designed first as an enterprise solution.
- ▶ Perspective VMS® provides full-functionality on your smart phone or tablet.
- ▶ This thin-client, browser-based VMS is the first video management software designed exclusively as an HTML5 rich application.
- ▶ Perspective VMS® is ready for cloud deployment.
- ▶ Perspective VMS® is made in the USA and trusted around the world.
- ▶ LENSEC is an agile company, implementing developmental changes to software in a relatively brief time.
- ▶ LENSEC has history as an integrator, so we've learned the challenges and devised solutions that support our integration channel partners.

SECURITY VIDEO
ACCESS CONTROL
GLOBAL SEARCH
USER COLLABORATION
CLOUD-READY
RFID INTEGRATED
VIDEO ANALYTICS
FACIAL RECOGNITION
INTRUSION DETECTION
INTEGRATED BARRIERS
DRONE INTEGRATION
SECURITY FENCE
FLEET MANAGEMENT
REMOTE SYSTEM HEALTH
EXPLOSIVE DETECTION
VISITOR MANAGEMENT
BIOMETRIC ENTRY/EXIT
LP RECOGNITION
STUDENT CAMPUS CARD
CUSTOM DEVELOPMENT
ENGINEERING SUPPORT
SOC VIDEO WALL
WATERMARKING





Perspective VMS[®] PRODUCT FEATURE COMPARISON

Perspective VMS [®] Features	Trial Edition	Command View Edition	Express Edition	Standard Edition	Professional Edition	Enterprise Edition
Maximum Number of Users	Unlimited	Unlimited	Unlimited	Unlimited	Unlimited	Unlimited
Maximum Number of Cameras	10	Unlimited	24	Unlimited	Unlimited	Unlimited
Global Search	✓	✓	✓	✓	✓	✓
HTML5 Browser-Based	✓	✓	✓	✓	✓	✓
Dynamic Maps Integration	✓	-	✓	✓	✓	✓
Intelligent Archive Management	✓	-	✓	✓	✓	✓
Simultaneous Live / Archive View	✓	-	✓	✓	✓	✓
Archive Video Extraction	✓	-	✓	✓	✓	✓
System Health Reports / Email Alerts	-	-	-	✓	✓	✓
Share View User Collaboration	-	-	-	✓	✓	✓
Neighboring Camera Associations	-	-	-	✓	✓	✓
Archive Locking	-	-	-	✓	✓	✓
System Lockdown	-	-	-	✓	✓	✓
Time-Lapse Extractions	-	-	-	✓	✓	✓
'If-This-Then-That' Workflow Logic	-	-	-	-	✓	✓
Import External Video Sources	-	-	-	-	✓	✓
Active Directory	-	-	-	-	✓	✓
Fleet Security Management	-	-	-	-	✓	✓
Live GIS-Mapping	-	-	-	-	✓	✓
Access Control Integration	-	-	-	-	Add-On	✓
Video Analytics	-	-	-	-	Add-On	Add-On
Automatic License Plate Recognition	-	-	-	-	Add-On	Add-On
Facial Recognition	-	-	-	-	Add-On	Add-On
Third-Party Security Devices	-	-	-	-	Custom	Custom

NOTABLE REFERENCES



GOVERNMENT MARKET

LENSEC serves government agencies from military to health-care, and everything in between.

National Health Agency	Saudi Arabia	12,000+ Cameras
National Intelligence Agency	Saudi Arabia	2,500+ Cameras
Military Education Institute	Saudi Arabia	1,400+ Cameras
Holy Pilgrimage Sites	Saudi Arabia	1,100+ Cameras
Government Passport Office	Saudi Arabia	600+ Cameras
Medical Training Hospital	Saudi Arabia	600+ Cameras
National Research Center	Saudi Arabia	500+ Cameras
Labor & Development Agency	Saudi Arabia	500+ Cameras
Military Armed Forces Command	Jordan	500+ Cameras
Geospatial Data Gathering Agency	Saudi Arabia	400+ Cameras
State-Owned Hospital	Texas, USA	200+ Cameras
City Municipality	Texas, USA	100+ Cameras
Government Defense Agency	Saudi Arabia	100+ Cameras
Government Tax Agency	Saudi Arabia	100+ Cameras
Tourism Agency	Saudi Arabia	100+ Cameras
County Radio Shop	Texas, USA	100+ Cameras
National Security Agency	Saudi Arabia	100+ Cameras
Public Airport	California, USA	100+ Cameras
International Airport	Jordan	100+ Cameras
State Health Agency	Arkansas, USA	100+ Cameras
Government Banking Agency	Saudi Arabia	100+ Cameras
Regional Development Authority	Saudi Arabia	100+ Cameras



EDUCATION MARKET

LENSEC has a long history with notable references in the education market - Higher Education and K-12 School Districts.

Public K-12 School District	Maryland, USA	126 Campuses	7,000+ Cameras
Vocational Training Institute	Saudi Arabia	Multiple Branches	5,000+ Cameras
Public K-12 School District	Texas, USA	School Bus Security	4,000+ Cameras
Public K-12 School District	Texas, USA	30 Campuses	2,200+ Cameras
Public Community College	Virginia, USA	10 Campuses	1,500+ Cameras
Public University	Medina, Saudi Arabia	69,000 Students	1,400+ Cameras
Public University	Ha'il, Saudi Arabia	3 Campuses	1,300+ Cameras
Public Research University	Texas, USA	Statewide Campuses	1,000+ Cameras
Private Research University	New York, USA	Ivy League Institution	800+ Cameras
Public K-12 School District	Texas, USA	12 Campuses	800+ Cameras
Public K-12 School District	Virginia, USA	29 Campuses	700+ Cameras
Public K-12 School District	Texas, USA	4 Campuses	400+ Cameras
Public K-12 School District	Montana, USA	5 Campuses	200+ Cameras
Private University	Kansas & Arizona, USA	5 Campuses	200+ Cameras
Public K-12 School District	Arkansas, USA	5 Campuses	100+ Cameras
Public K-12 School District	Texas, USA	11 Campuses	100+ Cameras
Public University	Saudi Arabia	International Campuses	100+ Cameras
Public K-12 School District	Texas, USA	18 Campuses	100+ Cameras
Community College	Maryland, USA	20 Buildings	100+ Cameras
Public K-12 School District	Texas, USA	20 Campuses	100+ Cameras
Public K-12 School District	Georgia, USA	8 Campuses	100+ Cameras
Public K-12 School District	Texas, USA	8 Campuses	100+ Cameras



COMMERCIAL MARKET

LENSEC develops standard and unique security solutions for the commercial market.

Oil & Gas Exploration Company	Multiple States, USA	500+ Cameras
Commercial Office Tower	Kuwait	400+ Cameras
Commercial Office Tower	Qatar	300+ Cameras
Nationwide Car Rental Company	Saudi Arabia	300+ Cameras
International Automation & Security Company	Qatar	100+ Cameras

ADDITIONAL MARKETS



HEALTHCARE



OIL & GAS INDUSTRY



TRANSPORTATION



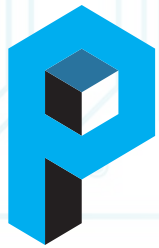
FLEET SECURITY MANAGEMENT



CRITICAL INFRASTRUCTURE

TECHNOLOGY PARTNERS





Perspective **VMS**®

2020

THE FUTURE IS CLEAR



+1 (713) 395-0800 sales@lensec.com lensec.com

LENSEC | 3151 Briarpark Drive, Ste. 125, Houston, Texas 77042

