



Let yourself go.

PARKING GARAGES

valmont 
STRUCTURES



VEHICLE SAFETY BARRIER
VALMONT IS THE ONLY SYSTEM OF ITS KIND WITH A TESTED VEHICLE SAFETY BARRIER AND PEDESTRIAN GUARDRAIL AS PART OF A COMPLETE ENGINEERED SOLUTION, FOR ADDED SECURITY.

**FAÇADE SOLUTIONS FROM VALMONT®
STRUCTURES ENABLE YOU TO MOVE
YOUR VISION FORWARD.**

It's all about movement.

Moving vehicles on and off the streets. Moving air to ventilate exhaust and maximize airflow. Moving people where they need to be. And, moving ideas to actualization. Parking garages that at one time served a singular, utilitarian purpose now invite community engagement, convey artistic expression, support urban evolution and cast a striking visual statement.



PEDESTRIAN GUARDRAIL



THE SCULPTURAL ARTWORK FAÇADE USES PIC PERF POWDER-COATED ALUMINUM FAÇADE FORMS TO CREATE A BOLD, DYNAMIC GRAPHIC SPAN, FLOATING SEAMLESSLY AROUND THE PARKING GARAGE EXTERIOR. ACTIVATING THE SURROUNDING URBAN LANDSCAPE, IT PRODUCES ILLUSIONS OF DEPTH, LIGHT AND PERPETUAL MOVEMENT.

PARKING GARAGES BECOME MORE THAN A PLACE TO PARK WITH PERFORATED AND WIRE MESH FAÇADE SYSTEMS FROM VALMONT STRUCTURES.

Innovation meets proven solution.

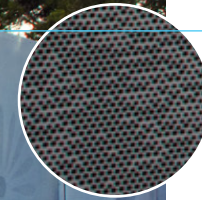
Designed, engineered and manufactured by Valmont Structures, our perforated and wire mesh facades offer the simplicity of a single solution—with virtually endless creative potential. But don't let its good looks fool you. This façade system proves its value with the functionality you expect from a proven partner like Valmont, with safety, shading, ventilation, privacy, pollution reduction, ease of installation and simple maintenance. Even the budget and timeline become advocates, rather than adversaries.



Take advantage of public arts funds, integrate smart city strategies and create architectural design that reflects forward thinking.



FORGET ABOUT HEAVY FRAMING AND SUPPORTS THAT DETRACT FROM DESIGN. VALMONT'S PATENTED INSTALLATION SYSTEMS SPEED CONSTRUCTION, REDUCE LABOR AND ALLOW THE USE OF INTEGRATED ACCESSORIES - WITHOUT COMPROMISING SAFETY OR MAINTENANCE.



CREATE A BRIDGE TO TAKE PEOPLE FROM WHERE THEY'VE BEEN TO WHERE THEY'RE GOING WITH PEDESTRIAN WALKWAYS OFFERING GREATER VISUAL APPEAL THAT'S MORE THOUGHTFUL ABOUT THE JOURNEY.



Façade systems designed for ease, strength and flexibility.

With the design flexibility that Valmont Structures parking garage façade systems provide, they're also remarkably functional and simple. So, you're able to accomplish more, more easily and in less time. Gain the convenience of delegated design with complete engineering and supply generated from the embeds using the Revit® project model – ensuring performance as promised, without compromising your creativity or design.

ENGINEERED CRASH BARRIER SYSTEM IS EXCLUSIVE TO VALMONT STRUCTURES, PROVIDING ADDITIONAL SAFETY FOR ALL PARKING GARAGE FAÇADE SYSTEMS – ALONG WITH PEDESTRIAN GUARDRAILS AND ANTI-CLIMBING GUARDRAILS.



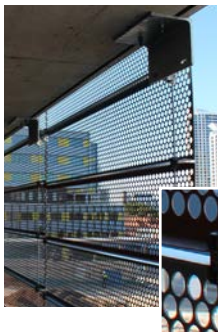
AURORA SYSTEM

The best added-value parking garage façade system, the highly customizable Aurora System is a unique casseted system created with expanded metal mesh or perforated metal panels. Configure Aurora to optimize airflow and constructability, while reducing the light and noise pollution associated with parking garages. Tailor the façade with nearly any image or design for outstanding aesthetic.



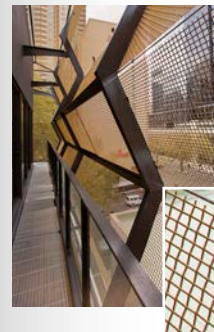
ATMOSPHERE FX

A solar-integrated façade system, Atmosphere FX provides the option of integrating solar panels with our signature perforated metal panels to power lights, computers, ticket stations, bus and EV charging stations. Supported by a vertically mounted rail system, which also acts as a cable tray for PV wires. When it comes to design, there are no limits in the options of perforated hole patterns, finishes or architectural aesthetic made possible with Atmosphere FX. Amazing that something so innovative is also so practical.



ATMOSPHERE SYSTEM

Visually striking design, the Atmosphere System is available in a wide range of options, with a variety of perforated hole patterns, along with the ability to fold or notch, paint or finish panels to match design specifications. Each is engineered and produced according to the build location and orientation, and can be installed to cover the entire building face or placed in targeted areas. Panels appear to float off the building using a tensioned cable system and patented clip system to attach the panels.



TRANSIT MESH SYSTEM

From sun shading and screening to bold architectural statements, the Transit Mesh System from Valmont Structures complements a variety of structure designs. Available in different shapes, metals and attachment options, it's ideal for minimizing the elements such as wind and rain, providing additional privacy, and permitting ample light and airflow. The stylish weave pattern provides texture and dimension.

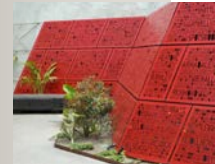
Think in colors, shapes, dimensions and purpose.

Valmont Structures perforated and wire mesh façades enable you to design without limits, even combining with other structural elements and materials to allow the parking garage to fit seamlessly into the built environment. If your imagination calls for something else, we can custom create it for you. So, your parking garage not only reflects your architectural aesthetic, it serves its purpose.



METALS

Choose from aluminum, stainless steel, zinc, brass and weathering steel depending on the façade system you select.



FINISHES

Powder or liquid coated in limitless color choices, anodized or electro-polished for color, texture and protection.



PATTERNS

Perforated in dozens of hole sizes, patterns and shapes, laser-cut designs and louver-shaped profiles, allow near unlimited visual potential, while promoting shading and airflow.



PURPOSE

More than a passive element of design, our façade systems also deliver tangible benefits for life, safety and sustainability, including:

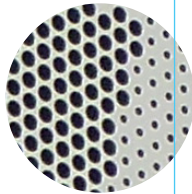
- Sun shading
- Optimizing airflow
- Reducing noise and light pollution
- Controlling heat
- Diffusing weather
- Providing structural protection
- Offering privacy and security

"As the auto culture wanes, we're going to have a lot of demolition to do, which is unfortunate. If we're going to build these [garages], let's design them in a way that they can have alternative uses in the future. With just a few tweaks, that's really possible."

-TOM FISHER,
Dean of the College of Design, University of Minnesota



REPLACE THE COST AND CUMBERSOME APPEARANCE OF CONCRETE BARRIERS WITH THE ONLY SYSTEM THAT IS ENGINEERED WITH A VEHICLE CRASH BARRIER AND PEDESTRIAN GUARDRAIL, THAT'S ALSO 100% RECYCLABLE.



PARKING GARAGE DESIGN HAS BECOME MORE THAN CONFIGURING THE MAXIMUM NUMBER OF PARKING SPACES. VALMONT PARKING GARAGE FACADES ALLOW DESIGN TO BE AN EXPRESSION OF TODAY THAT REMAINS RELEVANT EVEN AS THE STRUCTURE'S ENVIRONMENT AND USE CHANGE.

WITH SOLAR INTEGRATION CAPABILITIES, VALMONT PARKING GARAGE FACADE PANELS ALLOW ENERGY TO BE COLLECTED AND FED BACK INTO THE GRID OR USED TO POWER LIGHTING, TICKETING AND MACHINES.



Transforming what's possible.

Futureproof parking, urban integration, energy solutions, public transportation partnerships, people and communities in motion – as we ask more from our structures, we find the need to ask more of ourselves. Valmont Structures parking garage façades ensure you're up to the challenge – with entirely new capabilities that better reflect a modern-day approach to their architectural design.

Your vision transforms public parking into a welcome addition within the urban setting, extending beyond a single structure to include walkways, pedestrian bridges and transit stops, wayfinding and information, resting and waiting areas, electric car charging stations and serving as a new form of community and cultural enhancement.

Are you ready?

LET YOURSELF GO WITH PARKING GARAGE FAÇADE SYSTEMS FROM VALMONT STRUCTURES.

INNOVATION MEETS REGULATION WITH A PROVEN SYSTEM THAT MEETS CODE AND REGULATORY REQUIREMENTS FOR PARKING STRUCTURES.



SOLAR INTEGRATION



SMALL CELL 5G



LIGHTING

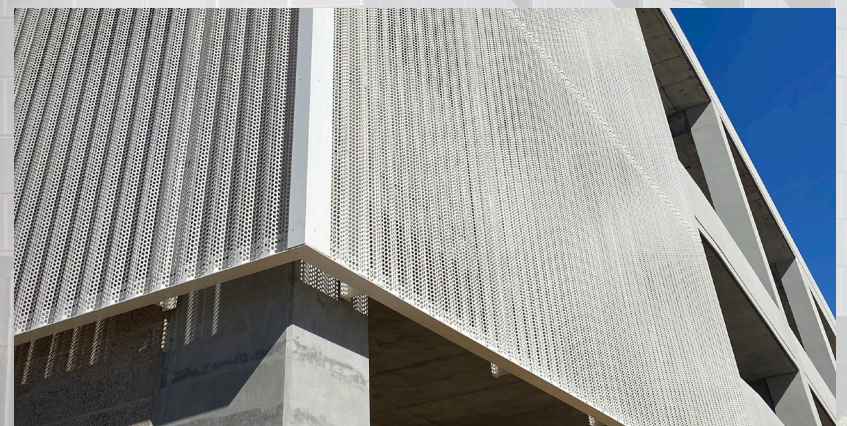


CHARGING STATIONS

CREATE WHAT YOU WANT, THEN LET VALMONT STRUCTURES USE YOUR REVIT® MODELS TO PROVIDE A FULLY ENGINEERED SOLUTION – SHIPPED COMPLETE TO THE SMALLEST DETAIL.



VALMONT ENGINEERED PARKING GARAGE FAÇADE SYSTEMS USE MINIMAL CONNECTIONS AND UTILISE BASE BUILDINGS TO PROVIDE A CLEAN ASSEMBLY – ALSO 100% RECYCLABLE





28800 Ida Street
Valley, Nebraska 68064 USA

+1 941.402.3554 | +1 800.825.6668
facades@valmont.com

valmontstructures.com/facades