



100 YEARS

Wooster Products Inc.
Anti-Slip Safety Stair & Walkway Products
“Make Every Step a Safe One”

1000 Spruce Street, P.O. Box 6005, Wooster, Ohio 44691
Phone: (330) 264-2844 • Toll Free Phone: 1-800-321-4936 • Fax (330) 262-4151

sales@wooster-products.com • www.woosterproducts.com

Serving you since 1921!

PROUDLY MADE



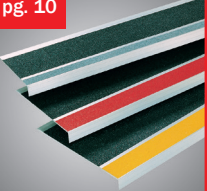
IN THE USA

pg. 4



STAIRMASTER®

pg. 10



FLEXMASTER®

pg. 6



NITEGLOW®

pg. 8



FLEX-TRED®

pg. 11



FLEX-MARK

pg. 13



WALK-A-SURED®

pg. 14



ACCESSORIES

ABOUT US & INDEX

Wooster Products Inc. has continually made quality anti-slip stair treads and walkway products in the USA since 1921. We utilize cutting-edge technology to deliver the finest quality products in the industry, and our knowledgeable sales team can help determine which anti-slip solution is best for you. Contact Wooster Products and let us help you "Make Every Step a Safe One" today!

Index By Brand Name

ALUMOGRIT® 3

STAIRMASTER® 4-5

NITEGLOW® 6-7

FLEX-TRED® 8-9

FLEX-MASTER® 10

FLEX-MARK 11

SAFE-STRIDE® 12

WALK-A-SURED® 13

EPOXY WP-70® 13

ACCESSORIES 14

FASTENERS 15

Index By Type Number

ABRASIVE CAST

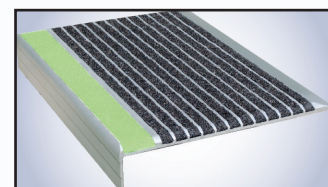
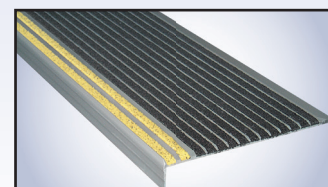
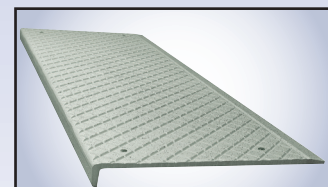
116A5

Extruded

1625
 1825
 30010
 31110
 333FT, 333FT-SN7
 333FT-NG, 333FTSN-NG7
 36510
 500, 500SN7
 500-NG5
 511, 511SN5
 5405
 5705
 6305
 6605
 61005

Tapes, Coatings & Signs

Photoluminescent signs & tapes7
 Flex-Tred rolls & die-cuts9
 Flex-Mark11
 Safe-stride paint12
 Walk-A-Sured epoxy13
 Epoxy WP-7013





ALUMOGRIT®

Our abrasive cast safety treads provide a safe, anti-slip walking surface on existing staircases. These durable treads protect the surface and edge of each step from damage, making them ideal for harsh applications.

Alumogrit® Tread Benefits

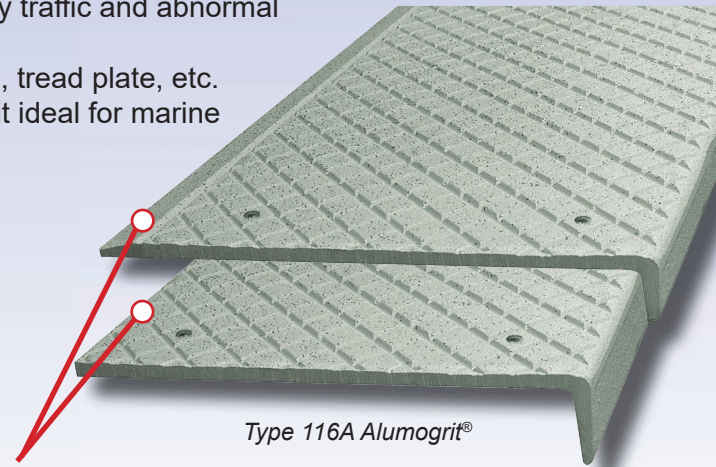
- Thick, durable cast aluminum treads built to withstand heavy traffic and abnormal physical abuse.
- Fits over any existing steps - concrete, metal, grating, wood, tread plate, etc.
- Alumogrit® does not rust and is corrosion resistant, making it ideal for marine application or corrosive environments.

Alumogrit® Specifications:

- Available in Alumogrit® (abrasive cast aluminum): No. 43 prime and secondary ingot; low copper content; corrosion resistant.
- Abrasive shall be #20 virgin grain Aluminum Oxide (Al₂O₃) abrasive, integrally cast into the walking surface to a minimum depth of 1/32 inch (0.79mm).
- Maximum piece length: 8'-6" in one section for Alumogrit® treads up to 6" deep. For all Alumogrit® treads over 6" deep, maximum length is 6'-0" in one section.
- Thickness: 3/8" or 1/2"
- Depths: up to 18" (1'-6") maximum
- Surface: Abrasive cross-hatched is standard and will be furnished unless plain or fluted surface is specified. Cross-hatch pattern may not match up on sections being butted together.
- Bevel or square back edge available.
- Available with countersunk holes.



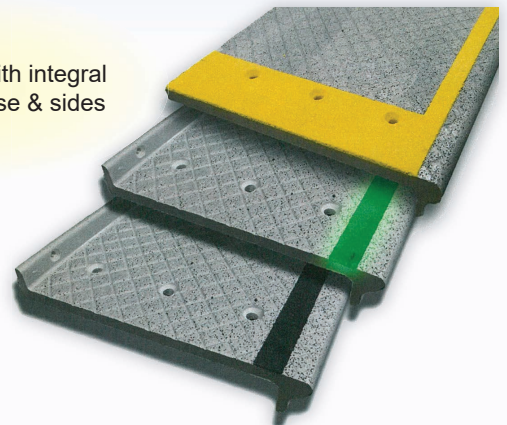
Alumogrit® Treads are great for high traffic or industrial stairways and landings.



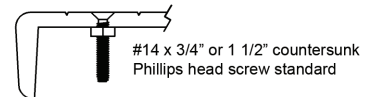
Type 116A Alumogrit®

Available with beveled or square back edge

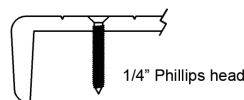
Also available with integral stripes along nose & sides



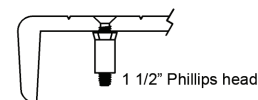
SUGGESTED TYPES OF FASTENERS FOR ALUMOGRIT® TREADS



BOLTED



ZINC COATED TAPCON SCREWS



SCREWS & SHIELDS



STAIRMASTER®

Stairmaster® safety treads provide a convenient method of repairing damaged or worn stair treads. The use of heat treated, corrosion resistant aluminum with a diamond hard aluminum oxide filler assures long tread life under heavy pedestrian traffic use. Stairmaster® is appropriate for both indoor and outdoor use.

Stairmaster® Benefits

- Aluminum base and diamond hard grit for maximum durability.
- Weather & corrosion resistant, perfect for indoor or outdoor use.
- Meets or exceeds OSHA, ASTM, and ADA requirements.
- Reduces accident risk and potential liability.
- Restores and modernizes damaged stairs.
- Custom cut to fit any size stair or landing.
- Pre-drilled for ready to install convenience.
- Low maintenance, easy to clean surface.
- 11 Color options to match any decor.
- Two-tone treads available for improved visibility.
- Significant cost and time savings vs. replacement of steps.
- 5 Year warranty on material and workmanship.



To help reduce slips and falls on stairs, we embed thousands of pieces of our heavy duty Aluminum Oxide (Al₂O₃) grit into every foot of Stairmaster® treads. This special abrasive formula provides anti-slip properties in any conditions, Stairmaster® treads even work when covered with water, oil, or grease! These durable treads will provide years of protection on any stairway.

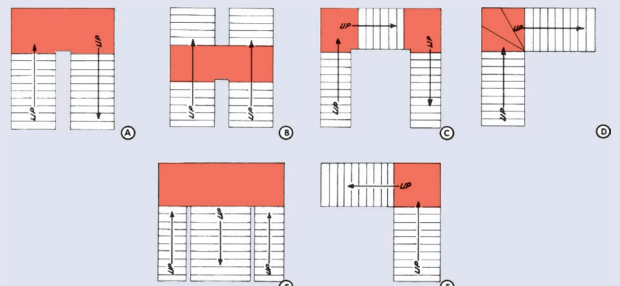


Stairmaster coverage on landings

Tread types can be combined to cover depths greater than 11 inches. Treads can also be used to cover ramps, platforms, floor divisions, areas in front of machines, and more.



POSSIBLE LANDINGS ON STAIRWAYS



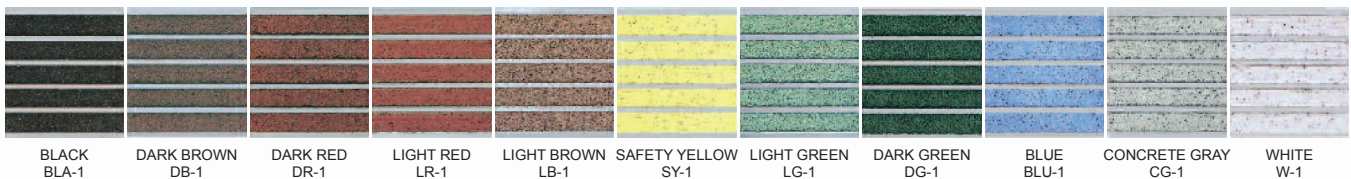
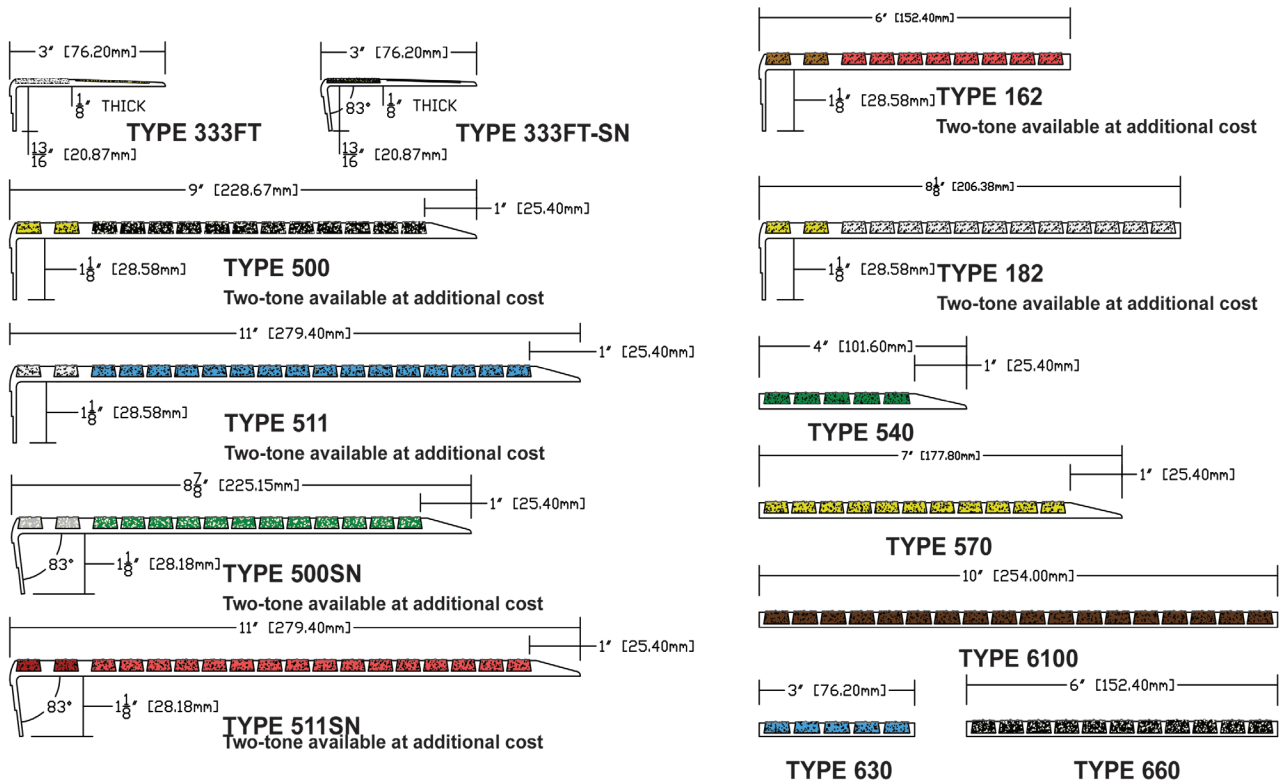


STAIRMASTER® SPECIFICATIONS:

- Tread base shall be type 6063-T5 extruded aluminum.
- Anti-slip filler shall contain not less than 65% virgin grain Aluminum Oxide/Silicon Carbide abrasive.
- Color shall extend uniformly throughout the filler; black color will be furnished if no other color is specified.
- Coefficient of Friction (C.O.F.) meets or exceeds OSHA Standard 1910.22, ASTM and ADA C.O.F. guidelines, and Military Specifications. C.O.F. numbers are: Dry 1.30, Wet 1.15, Oil 0.97. The test was performed according to MIL-D-17951 C.
- Treads shall be noncombustible as tested under Federal Test Method Standard No. 501a. Method 6411.
- Rated class 1 for flame spread and smoke development as tested per ASTM E84-08a.
- Treads are supplied with countersunk holes or without holes as specified.
- Type of fastener shall be specified.
- Treads under 6" wide will have one row of holes, 3" in from each end and approximately every 12". Treads 6" wide and over will have two rows of holes at the same spacing as treads under 6".
- Treads may terminate 4" from ends of steps for ease of cleaning or may be full length of steps less 1/8" clearance.

STAIRMASTER® DIMENSIONS

All types are 9/32" (7.14mm) thick unless noted otherwise. Most styles are available up to 12'-0" in one section. Maximum length for types 511, 511SN, and 6100 is 8'-0". Two-tone treads with contrasting color available. Call for details.





NITEGLOW®

FOR BUILDINGS CODES THAT REQUIRE PHOTOLUMINESCENT EXIT PATH MARKINGS

- **2018 International Building Code 403.16 & 1024, and International Fire Code 1024** — For all buildings groups A, B, E, I, M, and R-1 over 75 feet in height must install Photoluminescent Exit Path Markings in all enclosed emergency exit stairwells.
- **NFPA 101 and 5000 Section 7.2.2.5.5** — Exit Stair Path Markings All Buildings — Effective January 2009
- **New York City Building Code** — Reference Standard RS 6-1 requires in all enclosed emergency exit stairwells effective July 2008 — All Non-Residential Structures
- **State of California Building Code, Chapter 10** — Means of Egress requires in Group A, E, I, R-1, R-2 and R-3 Occupancies, in Exit corridors leading to Emergency Exit stairwells. Effective January 2008.
- **State of Connecticut** — Group A, B, E, I-1, I-2, R-1 and R-2 occupancies, in Exit corridors leading to Emergency Exit stairwells. Effective January 2008.
- **General Services Administration** — requires Photoluminescent Exit Path Markings in all new and existing buildings Effective January 2009

NITEGLOW® Egress Path Marking System Benefits

- Illuminates dark egress paths to help find your way
- Easily recharged by any natural or artificial light source
- Long afterglow makes edge of step visible for hours
- Entire glow area of nosing is slip resistant for maximum evacuation safety
- Nosings easily install over existing stairways to bring your building up to code
- Low maintenance treads are easily cleaned to maintain maximum brightness

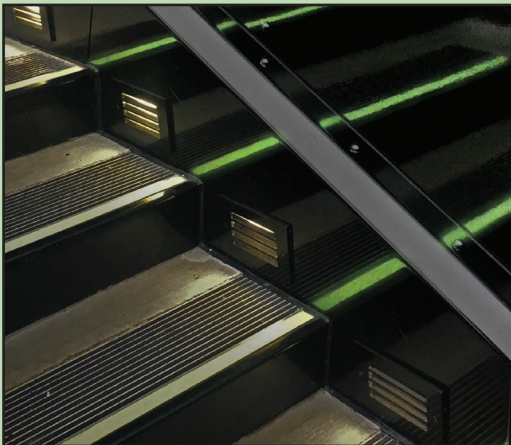


**WORLD TRADE CENTER
SAFETY TREAD OF CHOICE**

SAFETY GUIDANCE SYSTEMS

Bring your building into compliance with the International Building, International Fire, NYC and California Building codes. Section 1024 of the IBC and IFC codes calls for Photoluminescent markings to be used in all egress stairwells in buildings over 75 feet tall.

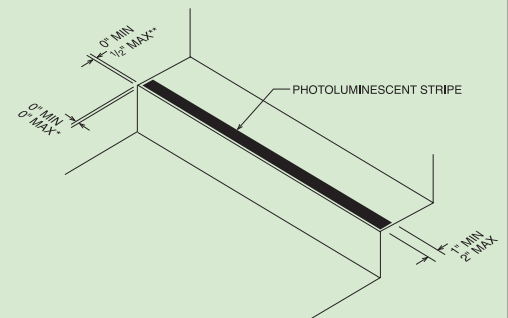
- **Code 1024.2.1 STEPS** — Continuous stripe on the leading edges - Utilize models 333FT-NG, 333FTSN-NG, or 500-NG
- **Code 1024.2.2 LANDINGS** — Continuous stripe on the leading edge - Utilize models 333FT-NG, 333FTSN-NG, or 500-NG
- **Code 1024.2.3 HANDRAILS AND EXTENSIONS** — Stripe on the top of the handrails - Utilize model NG.HR1-1
- **Code 1024.2.4 PERIMETERS** — Solid stripe on landings and other floor areas within exit enclosures. Either wall or floor mounted. Utilize model NG.HR1-1 or NG.AS1-1
- **Code 1024.2.5 OBSTACLES** — Obstacles projecting more than 4" or below 6'-6" shall be marked with alternating bands of photoluminescent and black strips - Utilize model NG.HZ1-1
- **Code 1024.2.6 DOORS WITHIN EXIT PATH** — Marked with a luminous exit symbol - Utilize models NG.RMR or NG.RML (consult factory for additional signs)
- **Code 1024.2.6.2 DOOR HARDWARE** — shall be marked with no less than 16 square inches of luminous material- Utilize models NG.DHM, NG.HR1-1, or NG.AS1-1
- **Code 1024.2.6.3 DOOR FRAME** — Top and sides of doors shall be marked with continuous luminous stripes - Utilize model NG.HR1-1 or NG.AS1-1



Empire State Building Observation Deck
New York City, NY.

GUIDELINES FOR STEPS & LANDINGS WITH PHOTOLUMINESCENT (GLOW IN THE DARK) REQUIREMENTS:

- The entire horizontal leading edge of each step and landing shall be marked with a solid and continuous stripe of photoluminescent material. The dimensions, distances, and locations shall be uniform throughout.





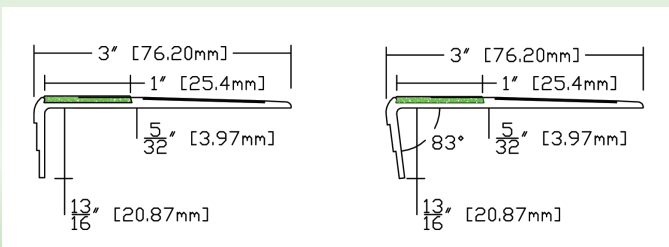
PHOTOLUMINESCENT EGRESS MARKING SYSTEMS

A COMPLETE SYSTEM TO BRING YOUR BUILDING UP TO IBC, IFC, CBC, AND NYC CODE COMPLIANCE

NITEGLOW® PHOTOLUMINESCENT STAIR NOSINGS & TREADS

STAIRMASTER® 333FT-NG & 333FTSN-NG

High quality nosing at the lowest cost. Easy to install using construction adhesive and/or pre-drilled holes. 1" wide NITEGLOW® stripe. Available in two styles.

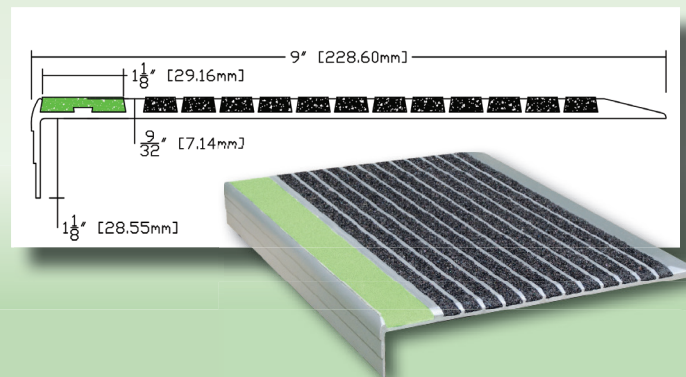


TYPE 333FT-NG

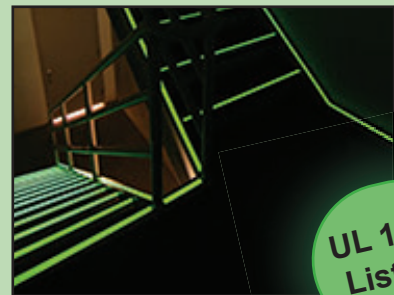
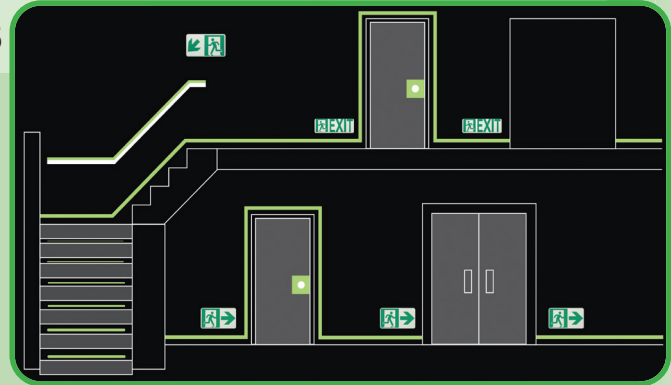
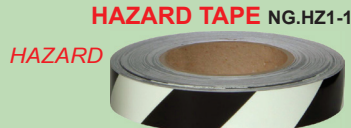
TYPE 333FTSN-NG

STAIRMASTER® 500-NG

Super durable Stairmaster abrasive ribs combined with a 1 1/8" wide NITEGLOW stripe for extra evacuation safety. Easily installs over existing stairs and landings.



PHOTOLUMINESCENT SIGNS AND TAPES



UL 1994 Listed!



For additional photoluminescent signage, please contact Wooster Products at:

1-800-321-4936

or

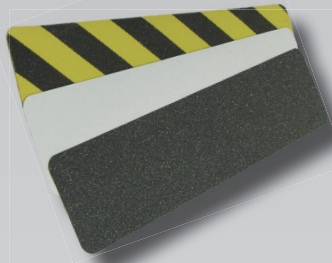
sales@wooster-products.com

25 Year Limited Warranty On Glow. Expect Service Life GREATER Than 50 Years!

CALL FOR INFORMATION ON PHOTOLUMINESCENT PRODUCTS



ANTI-SLIP SAFETY TAPE ROLLS, CLEATS & STRIPS



FLEX-TRED® Benefits

- Easily bends over 90° angles without fracture or failure of bond
- Applies in seconds to any dry, clean, smooth surface. Just roll or press into place
- Special pressure-sensitive adhesive chemically bonds with surface for super strong hold
- Weather resistant and long wearing, perfect for indoor or outdoor applications
- Die cuts available to fit custom applications
- Available in various colors, widths, lengths, and textures for different applications.
- Economical way to cut risk of slips and falls
- Resistant to a wide variety of cleaners and environmental conditions



FLEX-TRED® Specifications:

- **Flexible** — Flex-Tred® easily bends over sharp 90 angles without fracture or failure of bond. Can be bent repeatedly without cracking or failure of bond.
- **Temperature Limits** — Once applied, Flex-Tred® has a useful temperature range of -40°F to 220°F (-40°C to 104.4°C). Substrate temperature must be above 50°F when Flex-Tred® is applied.
- **Cleaning** — Applied Flex-Tred® will tolerate detergent cleaning and steam cleaning. Mop friendly textures available.
- **Environmental Resistance** — Flex-Tred® is weather and UV resistant, making it perfect for outdoor applications. Virtually unaffected by mild acid or alkali exposure in normal conditions. Flex-Tred® is also resistant to motor oil and hydraulic oil. Works well in marine or pool applications. Edge Sealing Compound is available for wet conditions.
- **Shelf Life** — Shelf life is two years minimum
- **Peel Adhesion** — MIL-D-17951E(SH): Adhesive Strength 0.75 lbs. (minimum). MIL-W-5044C: Adhesion lb./in. Width Type IV - 3 lbs. (minimum).

FLEX-TRED® Improves coefficient of friction of most surfaces in wet or dry use

Coefficient of friction tests run per specification Mil-D-17951E (ships) using rubber test vehicle. Higher numbers indicate better coefficient of friction.

COMPARISON OF VARIOUS SURFACES: STATIC COEFFICIENT OF FRICTION

FLEX-TRED® Surfaces	Dry Surface	Wet Surface	Other Surfaces	Dry Surface	Wet Surface
	Test Results	Test Results		Test Results	Test Results
Flat Black Coarse	1.33	1.21	Ribbed Rubber	0.89	0.76
Sparkle Black	1.24	1.06	Scotch Tred	0.69	0.50
Flat Black Medium	1.29	1.09	Painted Steel	0.77	0.69
Flat Black Fine	1.37	1.17	Textured Vinyl	0.80	0.64
Ocean Grey	1.30	1.02	Ribbed Vinyl	0.85	0.72

FLEX-TRED® meets or exceeds specifications for Mil-D-17951E (ships); Motor Vehicle Safety Standard No. 302; Walkway Matting, Non-slip Mil-W-5044C, Type IV, ADA, ASTM and OSHA





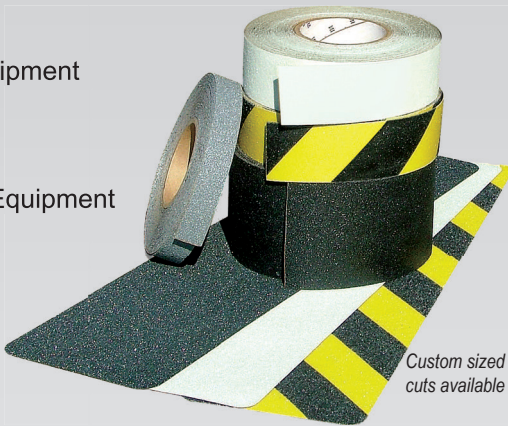
ANTI-SLIP SAFETY TAPE ROLLS, CLEATS & STRIPS

Use Flex-Tred almost anywhere you need an anti-slip surface!



Flex-Tred is durable for indoor and outdoor use such as:

- Stairs
- Ramps
- Construction Equipment
- Ladders
- Trucks & Trailers
- Work Stations
- Lawn & Garden Equipment
- Scaffolding
- Bumpers
- Walkways
- Decks & Docks
- Aircraft
- & Much More!



Custom sized rolls and die cuts available by request.

60 Foot stock roll sizes:

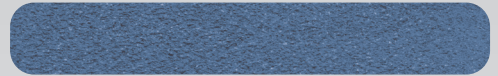
3/4" | 1" | 2" | 3" | 4" | 6" | 8" | 12" | 18" | 24"

Stock die cut sizes:

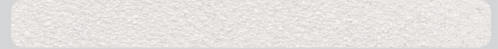
6" x 24"



3" x 24"
3" x 36"



2" x 24"



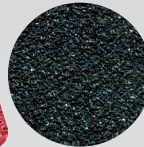
1" x 24"



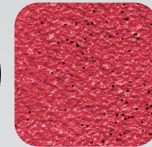
3/4" x 24"



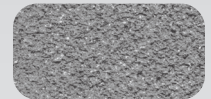
6" x 9"



5 1/2" Dia.



5 1/2" x 5 1/2"

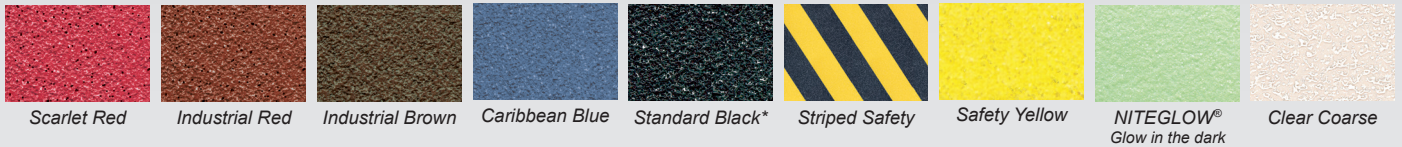


3 1/2" x 7 1/2"

NOTE:

Standard tolerance on all Flex-Tred® rolls & die cuts is ±1/16"

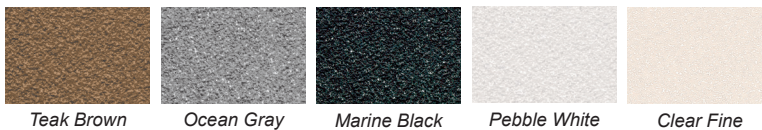
FLEX-TRED® COLOR CHART:



SAFETY MESSAGE TAPES:



MARINE, POOL & MOP FRIENDLY COLORS



With a special barefoot friendly design, Flex-Tred is ready for immediate use on pool decks, ramps, pleasure crafts, fishing docks, and boats. Special shapes available for OEMs. Order from our standard size rolls, die cuts, or custom order your own die cut shape.

Use Wooster Products Edge Sealer for wet environments.
See page 14 for additional details.

***Black textures:** Flat Black Coarse, Flat Black Medium, Sparkle Black, Marine Black, Flat Black Fine, Ultra Grip Black, Super Fine Black

Actual color may vary slightly from printed sheet. Request color sample if color is critical. Flat Back Medium is standard and will be furnished unless a color is specified.



FLEXMASTER®

Flexmaster® provides a convenient, easily replaceable solution for making stairways slip resistant. Our state of the art aluminum base protects the edges of the anti-slip surface while prolonging the lifespan of your stairway.

Flexmaster® Benefits

- Aluminum base and Flex-Tred® anti-slip surface provide long lasting safety.
- Weather & corrosion resistant, perfect for indoor or outdoor use.
- Meets or exceeds OSHA, ASTM, and ADA requirements.
- Pre-drilled for ready to install convenience, can also be installed with construction adhesive only.
- Available in all Flex-Tred® colors- including NITEGLOW®.
- Inexpensive and easily replaceable if surface becomes worn.

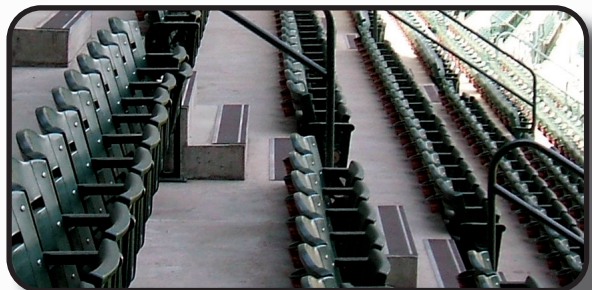


Flexmaster® Specifications:

- Sizes available: Type 365- 6 1/2" wide, Type 300- 9" wide, and Type 311- 11" wide
- Maximum piece length is 12'-0" in one section.
- The Flex-Tred® anti-slip surface is chemically bonded onto the extrusion with a permanent type acrylic pressure-sensitive adhesive capable of 7.3 lbs. per sq. in. peel strength.
- Treads are non-combustable as tested under Federal Test Method Standard No. 501a, Method 6411, Mil-D-STD-1623D. Treads meet Motor Vehicle Safety Standard No. 302, Mil-W-5044C Type IV. Treads are U.S.D.A approved. Treads have a coefficient of friction per specification Mil-D-17951E that is equal to or greater than 1.24 Dry and 1.02 Wet.
- The tread base is made of alloy 6063-T5 extruded aluminum, with a 5/32" minimum thickness.
- The safety treads are furnished straight and free from defects. All exposed aluminum will have a satin-lacquered finish. Color extends uniformly throughout the abrasive surface; available in many contrasting colors.
- Treads are furnished with countersunk holes unless otherwise specified.
- Standard fasteners include zinc coated Tapcon screws, screws and expansion shields, wood or machine screws, and nuts and bolts.
- The use of construction adhesive is recommended.

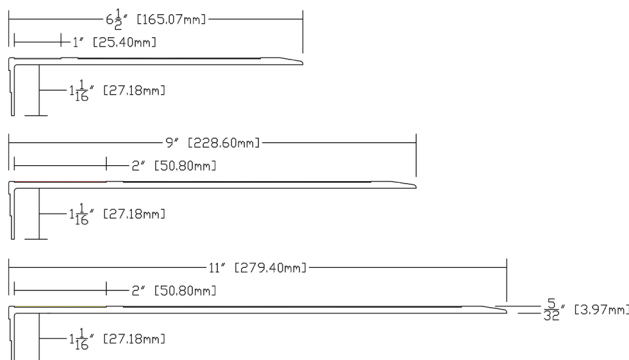


Flexmaster® is cost efficient and reliable, making it ideal for stadiums, arenas, and other large venues.



Chase Field - MLB stadium in Phoenix, AZ.
Home of the Arizona Diamondbacks.

FLEXMASTER® DIMENSIONS





FLOOR MARKING TAPE FOR WAYFINDING & IDENTIFICATION

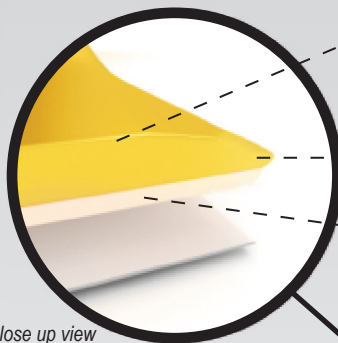


FLEX-MARK

Flex-Mark is a heavy-duty PVC floor tape used for wayfinding, identification, and organization in a variety of industries. It is cost effective, simple & safe.

FLEX-MARK Benefits

- Create safe equipment and pedestrian traffic lanes.
- Mark hazardous areas where extra caution or PPE is required.
- Identify borders of workstations, machines, racks, equipment etc.
- Helps with inventory management and organization.
- Strong PVC material can withstand traffic from forklifts and other machines.
- Requires less prep time than paint, has no harsh fumes, and is mess free.
- Markings are easily cleaned for maximum visibility and safety.
- Super strong peel and stick adhesive makes it easy to apply and leaves no residue.



7 Time thicker than average floor tape

Beveled edged prevents snags and increases durability for forklift traffic

Peel and stick adhesive leaves no messy residue

Close up view of Flex-Mark.



STRONG.
TOUGH.
SAFE.

Flex-Mark tape is made from PVC material, which allows it to withstand forklift traffic without tearing.

Flex-Mark is an excellent tool for marking important workplace boundaries such as paths, storage, and hazardous areas. Flex-Mark provides a strong visual cue to make it easier for people to get around safely. It can improve both efficiency and safety in manufacturing facilities, warehouses, construction sites, and more.

FLOOR TAPE DISPENSER

This innovative new dispenser makes floor tape application a breeze! Includes guide arm so you get a perfect line every time.



Works with all 2", 3" and 4" wide rolls of Flex-Tred® and Flex-Mark tape.

100 Foot stock roll sizes: 2" wide 3" wide 4" wide	
Stock Colors:	Common Uses:
YELLOW	Outlines safe pathways, aisles, and lanes in areas with pedestrian and equipment traffic.
RED	Marks boundaries of dangerous or red tag areas, as well as emergency exit areas.
YELLOW & BLACK STRIPED	Used in areas that require extra caution due to health or safety hazards.

Additional colors available by request, contact Wooster Products for details.



SAFE-STRIDE®

SAFE-STRIDE acrylic and oil base paints contain extremely durable aluminum oxide or zirconium grit. Simply apply with a brush or roller and let dry to add traction to almost any surface.

SAFE-STRIDE® Benefits

- Adheres to many surfaces, such as wood, concrete, marble, stone, asphalt, and primed metal
- Durable high traction grit embedded in paint to increase safety
- Easy application and clean-up
- Meets OSHA and ADA standards
- Meets ASTM requirements for slip resistance
- Oil base and **LOW VOC** acrylic base paint available
- Available in three different colors to match your decor

**ACRYLIC
LOW VOC**



Oil base safe-stride is preferred for high traffic areas.



Safe-Stride can add traction to entrances, walkways, ramps, bridges, etc.



Black
Acrylic Base Only



Gray
Acrylic & Oil Base



Safety Yellow
Acrylic Base Only



Use Wooster Floor Prep to thoroughly clean surfaces before applying Safe-Stride. See Page 14 for details.



WP COATINGS	Colors Available	Container Size	Storage Application	Approximate Coverage Sq. Ft.	Cure Time at 75° F	Method of Application	Application Temp.	Working Temp.	Pot Life Minute	Approximate Coefficient of Friction Dry	Approximate Coefficient of Friction Wet	Meets OSHA ADA & USDA Guidelines
PAINT COATINGS MODERATE TRACTION AND DURABILITY FOR FOOT TRAFFIC												
LOWVOC SAFE-STRIDE® Acrylic	Black, Gray Safety Yellow	1 Gallon	50° to 90°	100-125	2-4 hrs.	1/4" Nap Roller	50° to 90°	40°-110°	N/A	.97	.79	Yes
SAFE-STRIDE® Oil-Base	Gray	1 Gallon	50° to 90°	100-125	12 hrs.	1/4" Nap Roller	50° to 90°	20°-110°	N/A	.87	.83	Yes

No extra hazardous shipping charges with Safe-Stride acrylic.
Oil base Safe-Stride cannot ship by air.



Walk-A-Sured and WP-70 2-Part Epoxy Coatings

WALK-A-SURED® & EPOXY WP70® EPOXY COATINGS

Wooster 2-part epoxy coatings provide extreme traction for heavy traffic or industrial settings. Large areas can be covered in a single coat, renewing floors and providing a long-wearing, durable anti-slip surface.

WALK-A-SURED® ROLL-ON Benefits

- Enhances traction on a variety of surfaces.
- Water, solvent, chemical, and UV resistant.
- Easy application and clean-up.
- Meets OSHA and ADA standards, and ASTM slip resistance requirements.
- 100% solids, **VOC FREE**.
- Available in gray only.



EPOXY WP-70® Benefits

- Heavy duty 2-part epoxy system.
- Renews damaged floors or ramps in a single coat. Can even cover existing coatings.
- Extra thick consistency, requires trowel or squeegee application.
- Meets OSHA and ADA standards, and ASTM requirements for slip resistance.
- Environmentally friendly **LOW VOC** formula.
- Available in two different colors.



WALK-A-SURED® Water Clear Benefits

- Shows natural beauty of marble, stone, and wood.
- Water, solvent, chemical, and UV resistant.
- Easy application and clean-up.
- Meets OSHA and ADA standards, and ASTM slip resistance requirements.
- 100% solids, **VOC FREE**.
- Available in three variations: Barefoot 60, Universal 40, and Heavy Duty 20.



WP COATINGS	Colors Available	Container Size	Storage Application	Approximate Coverage Sq. Ft.	Cure Time at 75° F	Method of Application	Application Temp.	Working Temp.	Pot Life Minute	Approximate Coefficient of Friction Dry	Approximate Coefficient of Friction Wet	Meets OSHA ADA & USDA Guidelines
EPOXY COATINGS: VOC FREE WALK-A-SURED® HIGH TRACTION AND DURABILITY FOR VEHICLE AND FOOT TRAFFIC LOW VOC EPOXY WP-70® EXTREME TRACTION AND DURABILITY FOR INDUSTRIAL TRAFFIC												
VOC FREE WALK-A-SURED® Water Clear	Clear	1 Gallon Kit	65° to 80°	200-315	8 hrs.	1/4" Nap Epoxy Roller	55° to 100°	20°-110°	25-35	.80-1.07	.76-1.02	Yes
VOC FREE WALK-A-SURED® Roll-On	Gray	1 Gallon Kit	65° to 80°	125-175	18-24 hrs.	1/4" Nap Epoxy Roller	55° to 100°	20°-110°	30-60	.97	.80	Yes
LOW VOC EPOXY WP-70®	Black, Gray	1 Gallon Kit	65° to 80°	25-35	18-24 hrs.	Squeegee	55° to 100°	-40° to +180°	30-60	.92	.76	Yes

Epoxies should not be used on wood where freeze thaw conditions exist.



ACCESSORIES

Wooster Products carries a variety of accessories, cleaners and compounds to help you efficiently and effectively install your new anti-slip products. These accessories are specially formulated to keep our safety treads, tapes, and coatings secure under heavy use and in a wide range of environmental conditions.



Wooster Floor Prep

Many of our products require a clean, dry surface for proper adhesion. Wooster Floor Prep is an effective alkaline cleaning compound recommended for cleaning all types of interior and exterior floor surfaces prior to applying Flex-Tred, Heavy Duty Construction Adhesive, Walk-A-Sured, or Epoxy WP-70.

Coverage: Each 4 oz. bottle will clean approximately 50 sq. ft.



Heavy Duty Construction Adhesive

When used in addition to mechanical fasteners, this super strong adhesive will help keep your tread or nosing properly anchored. Heavy duty construction adhesive is VOC compliant, and comes in cases of twelve 10.5 oz. tubes.

Coverage: 70 lineal feet of tread per case when applied in a 5/16" bead.



Wooster Products Leveling Compound

Our specially formulated leveling compound can be applied to wood, concrete, steel, marble, etc. No primer required. Just add water, mix and trowel compound to provide a level bearing surface for treads. It will not shrink as it dries, and can be featheredged to 5/8" thick - without aggregate.

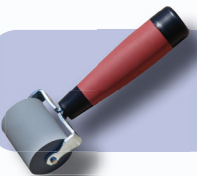
Coverage: Each 40-lb pail covers 101 sq. ft. at 1/16" thickness.



Wooster Products Edge Sealing Compound

Wooster Products' Edge Sealer is used with Flex-Tred® in applications where exposure to liquids is expected. Edge sealer is VOC free and sticks to most surfaces, including concrete, metal, wood, rubber, plastics, and fiberglass. Dries to tack free in under 1 hour, and cures completely overnight.

Coverage: Each 5 oz. tube covers approximately 100 lineal feet when applied in a 3/16" bead.



Seam Roller

Seam rollers are a simple and effective way to ensure proper adhesion of Flex-Tred® and Flex-Mark tapes. Works great along seams, edges, or uneven surfaces.














Floor Tape Dispenser

This innovative new dispenser makes floor tape application a breeze - no squatting or kneeling required! Can be quickly loaded with any 2", 3" or 4" wide roll of Flex-Tred® or Flex-Mark tape. Includes a built-in guide arm so you get a perfect line every time.

FASTENERS

Use the list below to help determine which fastener is best for your specific application. Using a heavy duty construction adhesive (Pg. 14) with mechanical fasteners will provide the strongest hold and best results.

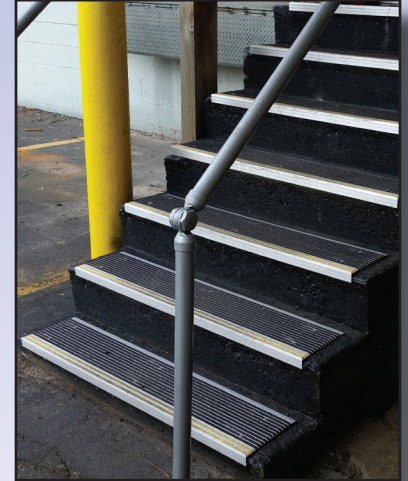
BOTH EXTRUDED & CAST TREADS	<p>Zinc Machine Screws <i>Countersunk W/ Phillips Head</i> #10-24 (3/4" And 1 1/4" Lengths) or 1/4"-20 (3/4 And 1 1/2 Lengths) <i>Primary Use:</i> Bolt extruded treads to steel pan or concrete.</p>	
	<p>Stainless Steel Machine Screws <i>Countersunk W/ Phillips Head</i> #10-24 (3/4" And 1 1/4" Lengths) or 1/4"-20 (1 1/2 Long) 18-8 Stainless Steel, <i>Primary Use:</i> Bolt extruded treads to steel pan or concrete in corrosive environments or marine applications.</p>	
	<p>#10-24 Hex Nut #10-24 or 1/4"-20 Zinc or Stainless Steel available, use same type as screw. <i>Primary Use:</i> Bolt extruded treads to steel pan return or to secure wing anchors. Use with Stainless Steel Machine Screws.</p>	
	<p>Wing Anchor <i>Mild Steel or Stainless Steel, 1 1/2"L x 3/4"W x 7/8"H</i> <i>*Always include hex nuts on order, stainless steel must be specified</i> <i>Primary Use:</i> Cast products in new concrete. Attached to tread with machine screws & nuts.</p>	
	<p>Zinc Wood Screw <i>Countersunk W/ Phillips Head</i> #10 x 1 1/2 or #14 x 1 1/2 <i>Primary Use:</i> Extruded products on wood stairs</p>	
	<p>Stainless Steel Wood Screw <i>Countersunk W/ Phillips Head</i> #10 x 1 1/2 or #14 x 1 1/2, 18-8 Stainless Steel <i>Primary Use:</i> Extruded products on wood stairs in corrosive environments</p>	
EXTRUDED ONLY	<p>3/16" Tapcon Screw <i>Corrosion Resistant, Countersunk W/ Phillips Head</i> 1 1/4" and 1 3/4" Lengths (1 3/4" Length screws are blue w/ black heads) <i>Primary Use:</i> Extruded products to existing concrete or masonry.</p>	
	<p>Expansion Shields #10 or 1/4" Expansion Shield & Lead Wood Shield <i>Primary Use:</i> Anchor tread to an existing surface, such as concrete or masonry. Use #10 or 1/4" Expansion Shields with their respective machine screws, and use Lead Wood Shield with zinc or stainless steel wood screws.</p>	 <p>#10 or 1/4" Expansion Shield Lead Wood Shield</p>
	<p>#8-32 x 3/4" Self-Tapping Zinc Machine Screw <i>Countersunk W/ Phillips Head</i> <i>Primary Use:</i> Attaches inserts to base FOR 2-STAGE WOOD & INSERTS ONLY</p>	
CAST ONLY	<p>Concealed Integral Anchor (Cast On Anchor) Aluminum. Approx. 1" long. <i>Primary Use:</i> Cast treads in new concrete. Only on types 100, 101, 101SP, 102, 103, 104, 105A, and 116 but MUST BE SPECIFIED. FOR FOUNDRY USE ONLY!</p>	
	<p>1/4" x 1 3/4" Tapcon Screw <i>Corrosion Resistant, Countersunk W/ Phillips Head</i> <i>Primary Use:</i> Cast products to existing concrete or masonry. FOR FOUNDRY USE ONLY!</p>	

ZINC IS STANDARD, STAINLESS STEEL MUST BE SPECIFIED
#10 SCREWS FOR EXTRUDED, 1/4"-20 FOR CAST



ANTI-SLIP SAFETY STAIR & WALKWAY PRODUCTS

Serving You
Since 1921!



PROUDLY MADE

IN THE USA



© Copyright 2021 WOOSTER PRODUCTS INC

WOOSTER PRODUCTS INC

1000 Spruce Street P.O. Box 6005
Wooster, Ohio 44691

Phone: (330) 264-2844 • Fax (330) 262-4151
Toll Free: 1-800-321-4936

Website: www.woosterproducts.com

E-Mail: sales@wooster-products.com



Printed in U.S.A.

Wooster Products Inc. reserves the right, without notice, to make changes in specifications, construction or design of any products at any time in such a manner as we may consider necessary, or advisable, and to discontinue the manufacture and sale of any products.

IMPORTANT NOTICE TO PURCHASER: THE FOLLOWING IS MADE IN LIEU OF ALL WARRANTIES, EXPRESS OR IMPLIED, INCLUDING WARRANTIES OF MERCHANTABILITY AND FITNESS FOR A PARTICULAR PURPOSE: Purchase or use of this product constitutes an agreement with Seller and Manufacturer that, if the product proves to be defective or in any way unsuitable, Seller's and Manufacturer's limit of liability for all damages, including but not limited to incidental or consequential damages, and User's or Purchaser's exclusive remedy, regardless of legal theory, including theories of breach of warranty, negligence and strict liability, shall be to receive, at Seller's or Manufacturer's option, repair of the defective product, an equivalent quantity of replacement product or a refund of the purchase price.