



**PARTNERS IN
TRANSFORMATION**

Locker Architectural Facades



CONTENTS

INTRODUCING VALMONT® STRUCTURES	4
LOCKER PRODUCT LINE	5
FACADES	6
SUN SHADING	12
TRANSPORTATION & SAFETY	18
PARKING GARAGES	24
SYSTEMS	30
MATERIALS, FINISHES, PIC PERF	36
PRODUCTS	42
ATTACHMENT SYSTEMS	51

Partners in Transformation

At Valmont® Structures, we've been helping architects and designers around the world transform the look and feel of commercial structures for decades. We design and manufacture perforated and wire mesh facades to help buildings make a unique statement while delivering new levels of functionality—such as shading, safety, ventilation or privacy.

Our facades revitalize dated structures and help parking garages actually enhance their surroundings. Sun shading structures offer building owners and occupants an opportunity to control sunlight, heat and airflow. The products that we've created for transit stops and walkways have elevated how people perceive communities.

At Valmont Structures, our partnerships are built on a foundation of trust. Trust that we share your vision. And trust that we can bring your vision to life—every time. Let us show you exactly how our solutions have been earning trust for over 60 years.

The Locker Product Line: Solutions for Any Situation

The Locker product line from Valmont® Structures was created from the simple idea that facades can and should offer more. More options to capture and express a creative vision. More choices in materials and finishes. More systems that simplify installation and maintenance. More control over budgets and installation timelines.

Since 1956, the product line has evolved to meet the changing needs of architects, engineers and contractors. The core benefits are:

- **Flexibility** – Choices range from perforated and expanded metal to transit mesh, backed with nearly unlimited combinations of perforations, profiles and finishes to achieve your design goals.
- **Functionality** – Whether it's sun shading, ventilation, reducing noise or light pollution, protecting privacy, providing shelter or simply putting a new face on an old structure, facades from the Locker product line optimize both form and function.
- **Simplicity** – Proven attachment components are lightweight, simple to maintain and offer reduced installation times. These same components are also the backbone of our Atmosphere, Aurora and Transit Mesh facade systems.
- **Delegated Design** – Using your Autodesk REVIT® model, we provide 3D interactive solutions to verify design intent, demonstrate assembly and make budgeting and timeline development much more accurate.

The Locker product line is supported by the engineering innovation, industry leadership, global resources and manufacturing legacy of Valmont Structures.





Facades

Where personality and functionality
merge to create new opportunity.



The Face Makes the First Impression

When you meet someone new, their face is what makes the first and strongest impression. At Valmont® Structures, we know the same is true for any building. That's why the facade partner you choose is so vital. You need someone who not only understands the intricacies of your unique vision but can also work alongside you to create it. A partner who not only offers materials such as perforated or expanded metal but backs them with the manufacturing experience and resources to bring those materials to life. You need a facade partner you can trust. You need Valmont Structures.

Facade Solutions Offer



Privacy / Security

Our facades not only provide privacy from people trying to see in, they also provide security by enabling those who are inside to see out.



Environmental Control

Facades can be optimized to control exposure to light, heat and airflow. Well-designed perforated panel systems help to control the comfort of the building's occupants as the sun moves throughout the day, and as seasons change throughout the year.



Aesthetic Options

Whether you choose perforated or expanded metal, facades from Valmont® Structures can help you create a design to achieve any aesthetic vision.



Structural Protection

Facades from our Locker product line are lightweight and require minimal structural support to stay in place. What's more, their inherently porous design means they can help diffuse the impact of strong winds while also helping to shield the structure from extreme weather.



DARLING HARBOUR LIVE

PRODUCT: Custom expanded metal Sun 3426 and custom attachment system

ARCHITECT: Populous & Hassell District



Darling Harbour Live is Sydney, Australia's new international convention, exhibition and entertainment district. Made up of three separate venues, each with their own unique architectural character, Darling Harbour Live is a world-class entertainment venue that captures the hearts of locals and visitors alike.

The theater, situated at the southern end of the district, utilizes a custom-designed expanded metal sunshade that covers the Darling Drive and Pier Street sides of the building. The designers worked hard to acquire the right materials for maintaining shade and privacy inside the building, as well as suiting the unique engineering requirements of the project.

These panels were installed to create large geometric surfaces that provide a vibrant, modern appeal to enhance not just the theater itself, but the entire district. A custom attachment system was designed to bring the project together.



THAMES CARNEGIE LIBRARY ARCHIVE ADDITION

PRODUCT: Custom perforated patterns

ARCHITECT: Architectus



Located in the Coromandel Peninsula in New Zealand, Thames is a town incredibly proud of its past. To preserve its history, the town tapped Architectus to conceptualize a temperature and humidity-controlled extension for the Thames Carnegie Library, which serves as the area's central archive.

Architectus wanted to create custom perforated facade panels that would passively control humidity and temperature to keep energy costs low. Made of 2-inch triangular apertures, the panels feature a bronze color that complements the library's brick-and-mortar characterization.

In addition to being visually appropriate, the solution's primary purpose is to protect precious documents for years to come. As a result, Architectus received an effective solution that also provided options for managing heating, ventilation, humidity and related expenses.





Sun Shading

The balance of light and shadow from a sun shade can do more than provide comfort and efficiency, it can change the face of a building as the sun moves across the sky.



Sun Shading Offers More Control

At Valmont® Structures, our passive climate control systems are anything but passive. Unlike other methods available to manage glare or heat, sun shading systems offer something more—control. Control over solar gain—less in the summer, more in the winter. Control over light—more in the morning, less in the afternoon. Control over the aesthetics, and the impression made by your structure.

Sun Shading Solutions Offer



Reduced Climate Control Costs

Sun shading facades have been shown to reduce heating and cooling costs anywhere from 5% to 25% depending on a number of factors including building size, climate and materials used.



Visual Comfort / Lighting Control

By reducing glare in some parts of a building and allowing light to enter others, sun shading facades provide the ultimate visual comfort by controlling glare, light contrast ratios, as well as occupant comfort from heat gain.



Architectural Differentiation

A variety of materials, textures and imagery offer you the ultimate control over passive solar heating and cooling design. By choosing a sun shade facade from Valmont Structures, you get aesthetic options that allow your building to stand out, complement surrounding structures or blend in seamlessly.



Directional Control

Depending on the orientation of your structure, the sun will have a different impact on each side of your building. Sun shading facades give you the flexibility to optimize sunlight. More shading for southern and western exposures, less for those facing north and east.

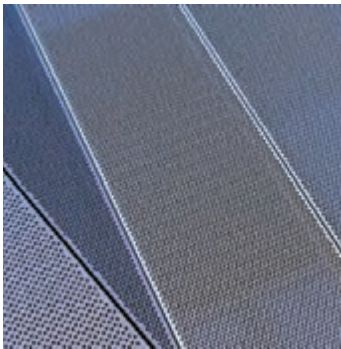
SUN SHADING



SPORTS HUB UQ

PRODUCT: Custom perforated triangle facade

ARCHITECT: BVN Architects



At the University of Queensland, the new St. Lucia Sports Hub features two playing fields situated above a 500-car capacity parking area with additional space for 200 bikes.

Incorporating green design elements such as rainwater collection and durable turf that reduces impact of play on natural grass, the Sports Hub is an innovative and impressive design.

We created a facade for the Sports Hub office. The frontage used custom designed panels with three different triangular perforations, which provide a subtle texture. These were installed at offset angles, creating a striking three-dimensional profile for a singular and unique project.

SUN SHADING



IVANHOE AQUATIC CENTER

PRODUCT: Perforated metal

ARCHITECT: Peddle Thorp Architects

Renovating and refreshing this long-standing community hub meant upgrading the facilities to meet today's needs while still retaining the character of the existing building. The revamped Ivanhoe Center now offers a wider range of services and is fully accessible to more of the public.

Established trees have been preserved and integrated into the design, which is visually defined by its prominent use of perforated metal sheets offering sun protection for people using the facility.

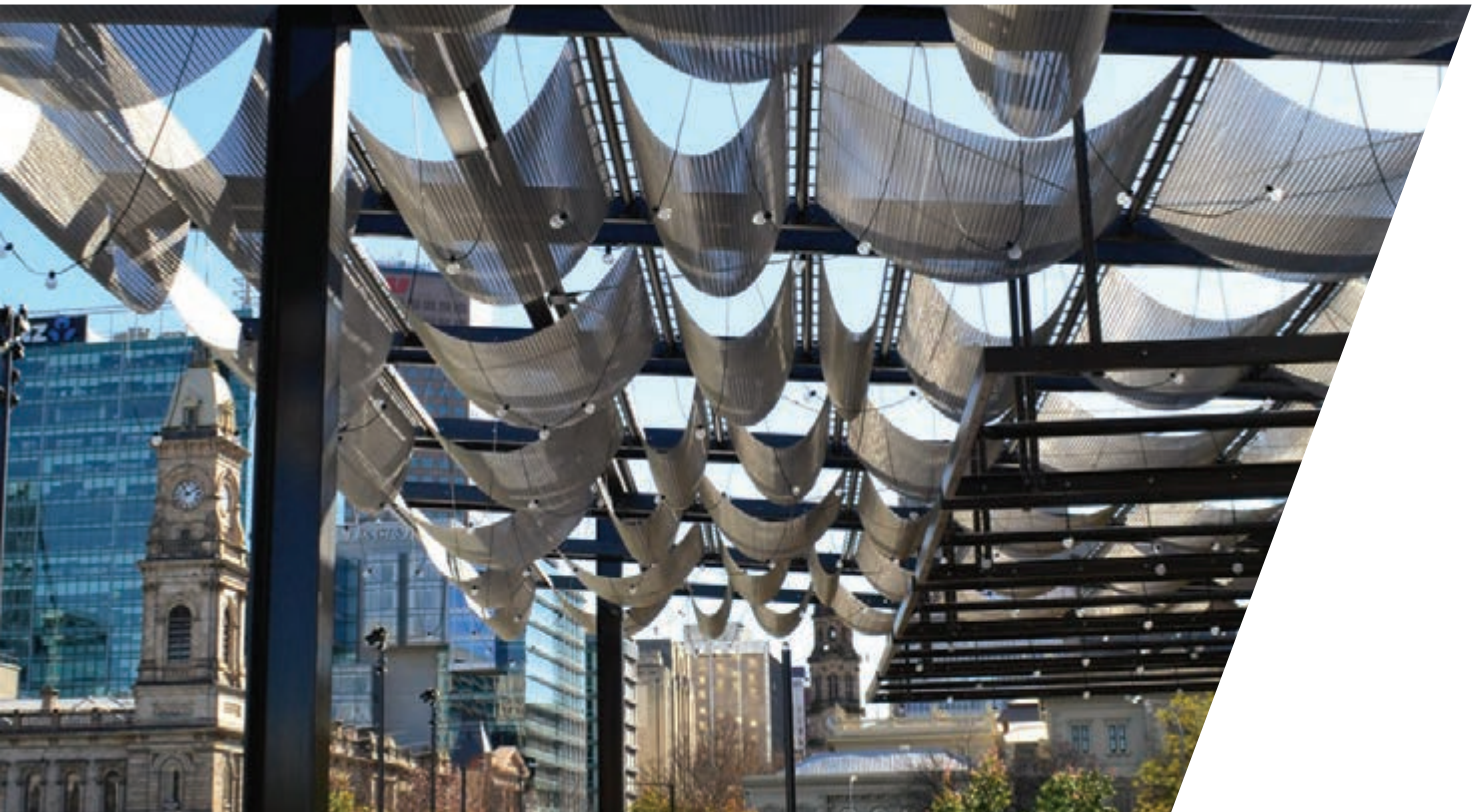






Transportation & Safety

An investment in quality walkways and transit stops can influence the perception and reality of any community.



Safe and Comfortable can also be Functional and Fun

Transit stops and pedestrian walkways not only reflect the culture of the city, but they can also be tailored to express the individuality of a specific neighborhood. They are a source of safety and pride for citizens. They add to the experience for visitors. At Valmont® Structures, we understand the importance a transit stop has in attracting riders, how a safe and welcoming walkway will encourage visitors to explore an area, and how both of these things build your local brand and contribute to your economic development.

Transportation & Safety Solutions Offer



Safety & Comfort

Facades and other products from the Locker product line can help ensure pedestrian walkways and transit stops seamlessly incorporate proper lighting, comfortable resting/waiting areas, ventilation and shelter from the elements.



Community / Cultural Enhancement

The variety of materials, colors, perforation options, etc. ensure that pedestrian walkways and transit stops add to the aesthetic and culture of any neighborhood.



Economic Development / Community Brand Building

Public transportation is one of the few places where people directly engage with a local government service. The transit stop is the first place where riders connect with public transportation. By helping them get the most from that experience, we also help you get the most economic benefit.



Functional Integration

The flexibility of our facades means they can do more than offer visual appeal, they can become critical to the functionality as well. This can include the incorporation of a simple signage, posted maps and schedules, and wayfinding or local area information.

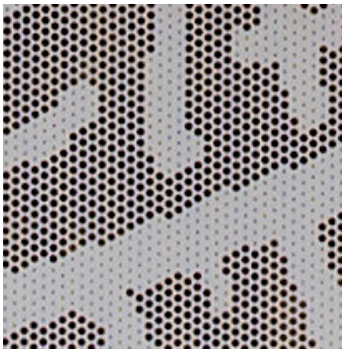


LIGHT RAIL

PRODUCT: Pic Perf

ARCHITECT: Architecture & Access (John Holland)

The stops along Sydney, Australia's inner west light rail line were recently overhauled to more accurately reflect the surrounding suburbs. Segments of this line have been used since the 1850s, and designers needed to produce an aesthetic that paid homage to the history of the line while at the same time looked to Sydney's future as a cultural hub.



The light rail project made use of Pic Perf products for the weather shielding of the stops. Utilizing eye-catching and stylized graphics that promote the culture and history of each area, the designers have successfully created a unique aesthetic that makes this light rail line stand out among the rest.



FLINDERS MEDICAL CENTER PARKING GARAGE

PRODUCT: Pic Perf Directions facade

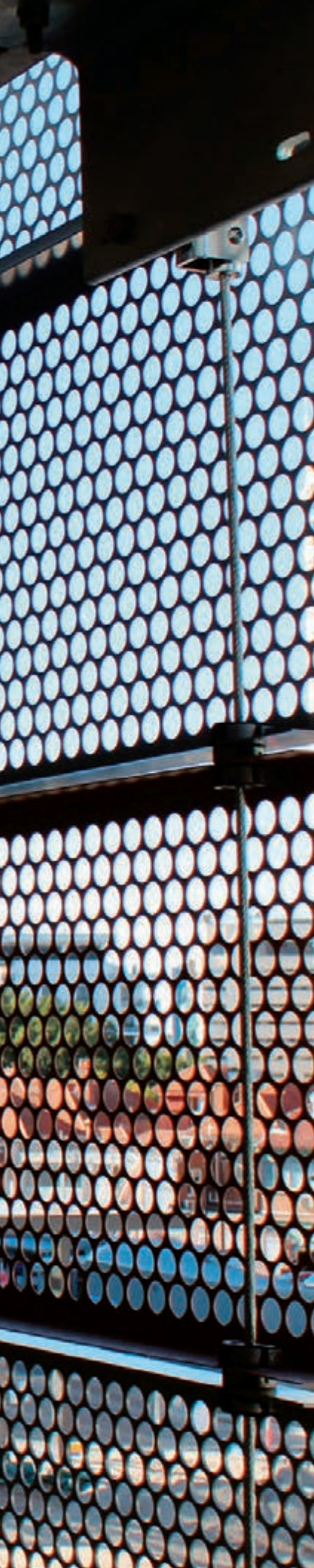
ARCHITECT: Cheesman Architects



The new parking garage at Flinders Medical Centre (FMC) in Adelaide, Australia was designed to accommodate the facility's increase in services. The expansion, which added 1,260 parking spaces, was a three-fold increase in available parking for staff, patients and visitors.

Over 2,500 Pic Perf Directions panels were formed and folded in this design to create a specific flanged perforation. The profile performed a dual function of providing protection against light spill, while also creating an effective and reliable visual barrier. This was an important aspect of the design, as preventing a direct line of sight between the parking garage and treatment rooms was vital to patient privacy.





Parking Garages

An urban necessity has now
become a design opportunity.



Helping Parking Garages Create Community

Gone are the days when parking garages were accepted as a practical solution for the need to park a large number of cars in landlocked urban environments. Today, Valmont® Structures is helping show architects and designers alike how parking garages can be transformed into a structure that enhances its surroundings while adding new benefits such as protection of pedestrians and their vehicles as well as reductions in light pollution.

Parking Garage Solutions Offer



Safety

Safety begins by protecting people as they move in and out of the facility and keeping vehicles protected when they're parked. The Aurora system from our Locker product line features a tested vehicle safety barrier and integral facade attachment system – all supplied as a complete engineered solution.

Efficiency

Movement of people and vehicles into and around the parking garage is paramount to efficiency. We believe efficiency also means designing and manufacturing structural components that stand up to the elements and are easy to maintain.



Ventilation

Ventilation of automotive exhaust and other vehicle-related contaminants is vital to the health of the parking public, and for meeting code mandated open-air requirements. But it also extends to keeping facilities cool in the summer and minimizing cold winter winds.

Aesthetic Value

Whether new construction or retrofit, our facades offer you the opportunity to create nearly any visual. This ensures the parking garage is adding to the visual appeal of the neighborhood and the larger urban cityscape.

PARKING GARAGES



BUNGAN LANE

PRODUCT: Pic Perf

ARCHITECT: Antoniades Architects

The Bungan Lane Car Park in the town center of the Mona Vale community of Sydney, Australia, uses a combination of perforated metal and solid precast concrete panels to create the building's distinctive look. The perforated metal provides natural light to the interior while still maintaining security and high, open areas for ventilation.



The Pic Perf solution was used to add a whimsical and organic look to the parking garage, a type of building that can otherwise look utilitarian and dull. The round bubble-like design punched in the metal contrasts with the building's angular lines and rectangular panels.

PARKING GARAGES



TANK STREET

PRODUCT: Atmosphere and Pic Perf

ARCHITECT: WMK Architects



As part of a refurbishment that included rejuvenating the foyer and adding a cafe, WMK Architects designed a new frontage for the office tower at 40 Tank Street in Brisbane, Australia. Atmosphere system panels from our Locker product line were used for the facade that sheltered its parking levels, and the Pic Perf perforation technique was used to give it a bold rebranding.

Atmosphere was chosen in part because of its excellent ventilation and sun shading characteristics, but also because of its easy installation. The building's busy central business district location added an extra challenge to the project as the facade had to be erected quickly. Thanks to Atmosphere's swift constructability, stacks of panels were attached within a few hours.





Systems

We prepackaged some of our most popular screening products with our proven attachment systems to simplify design and installation.



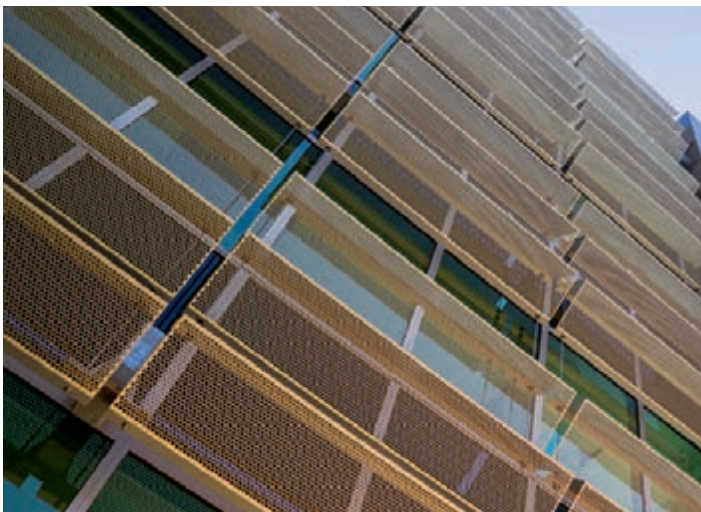
Ease and Simplicity

Available as a complete engineering package, our Atmosphere, Aurora and Transit Mesh facade systems were created to help simplify choice, shorten lead times and simplify installation. All the while, these systems offer you the design flexibility and functionality that Valmont® Structures solutions are known for.

The Atmosphere System

The Atmosphere system from our Locker product line offers a simple solution for those who need a visually striking facade. Saving you effort and money, Atmosphere provides solar shading and visual screening, while fulfilling your desire for striking design.

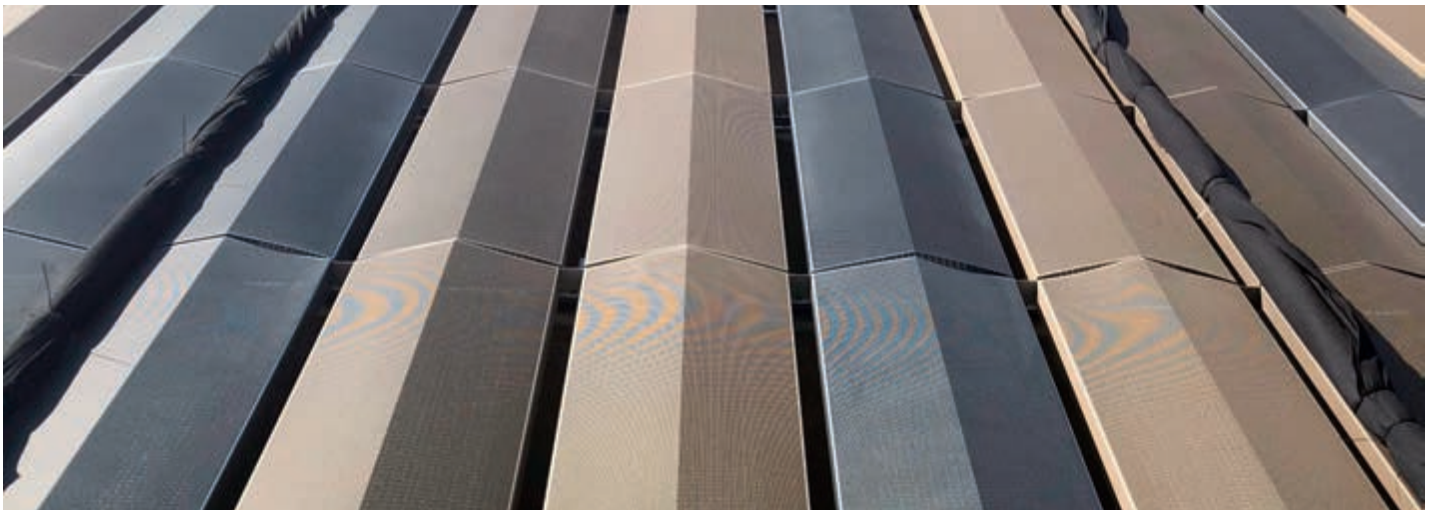
Atmosphere facade panels come in a range of design options to match nearly any of your design specifications. Our engineering team tailors each installation to your requirements, taking building location and orientation into account. Once your panels have been designed and produced, they are installed on tensioned stainless steel cables. Panels are delivered to site, ready for fast installation, whether they cover the entire building face or are placed in targeted areas.



The Aurora System

The Aurora system from our Locker product line is a unique cassetted system that is compatible with expanded or perforated metal. The Aurora system allows for these materials to be integrated in a car parking application or facade and is the only system of its kind on the market that is capable of integration with a vehicle safety barrier. Its permeable surface allows for optimum airflow, safety and constructability. Aurora offers a unique balance of high functionality with an outstanding aesthetic outcome.

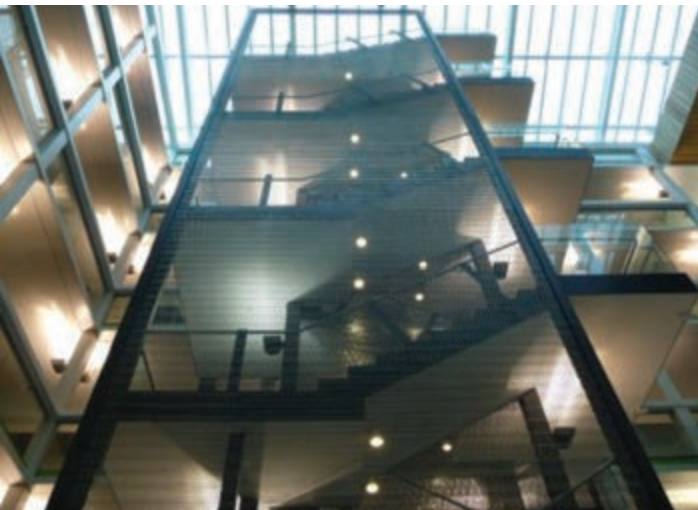
Aurora is a highly customizable system that can be adjusted to meet any specific requirements, allowing an unrivaled ability to successfully integrate with any project. Custom design options allow you to tailor the facade with nearly any image or design, while reducing the light and noise pollution commonly associated with parking garages.



Transit Mesh System

At Valmont® Structures, we know that making a bold statement in an exterior space doesn't always require a custom facade. Sometimes, it needs the subtle touch. That's why we created the Transit Mesh system.

To complement a variety of structure designs, Transit Mesh is manufactured in a variety of different shapes. Further flexibility can be found in the materials that are available in Transit Mesh, including stainless steel, brass or galvanized steel. Regardless of how you use Transit Mesh, there is also a full range of attachment options available to ensure it performs exactly as expected.







Materials & Finishes

The elements that bring your vision to life.



Our Potential is as Big as Your Imagination

At Valmont® Structures, we feel the most important thing we can offer is choice. A wide variety of materials, profiles and finishes mean more opportunities to bring your vision to life. And if you still don't see what you're looking for, we'll find a way to make it for you.

Materials & Finishes Solutions



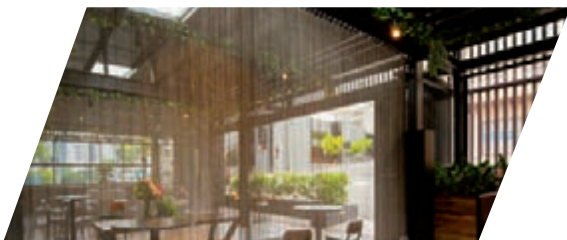
Perforated

Perforated metal sheets are manufactured by using small perforations to create stunning architectural designs, while allowing for maximum airflow and enhanced natural lighting. Hole size, shape and pattern are tailored to your specifications and enhanced with three dimensional profiles like those offered in Pic Perf Dimensions.



Expanded

Metal mesh can be custom-designed to match the size and profile of paneling you want. Larger mesh profiles encourage greater light and airflow for interior spaces. Exteriors can benefit from louver-shaped profiles which provide sun shading, keeping your structure cool and preventing sun damage.



Wire

Our wire mesh curtains couple privacy with an open flow, and also provide a modern visual edge. This makes them ideal for glare screening. Curtains can be manufactured in stainless steel, brass or aluminum from our broad portfolio of wire profiles, mesh thicknesses and weave options—all customizable to your specifications.



Custom Finishes

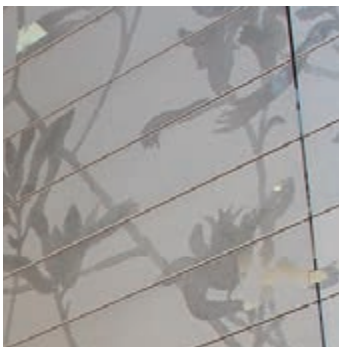
Powder or liquid coat, anodizing, electro-polishing or galvanizing can help add color and texture to your design along with the type of protection that will help ensure your vision can stand up to the tests of time and the elements.



WALGA COUNCIL

PRODUCT: Pic Perf and Atmosphere

ARCHITECT: Hassel



The Western Australia Government Association (WALGA) needed facades that were aesthetically appealing, environmentally sustainable and embodied the local character of Western Australia.

To achieve this eco-friendly goal, we recommended Atmosphere. Comprised of lightweight, folded, perforated panels and stainless steel cables, the solution reduces the amount of sunlight that hits buildings by up to 78%, drastically decreasing power consumption expenses.

Delivering attractive visual features, we also used Pic Perf, a versatile product that allows us to recreate any image on exterior facades. WALGA's design leaders decided they wanted to have the Kangaroo paw, the floral emblem of Western Australia, rendered through Pic Perf, giving the facility an inviting tone.



NIDA

PRODUCT: Pic Perf and Standard Perf

ARCHITECT: Hassel



The National Institute of Dramatic Art (NIDA) in Sydney, Australia, had unique design requirements as the leading center for both education and training in the performing arts. A world leader in their field, NIDA needed a look that would reflect this to the public.

Employing both Pic Perf and Perforated metal products, the designers were able to establish an upscale, modern look through a sharp interplay of different textures.

One facade of the building uses Pic Perf to display the NIDA logo, while the other facade uses Pic Perf to convey a dramatic image of a group of actors.



EXIT

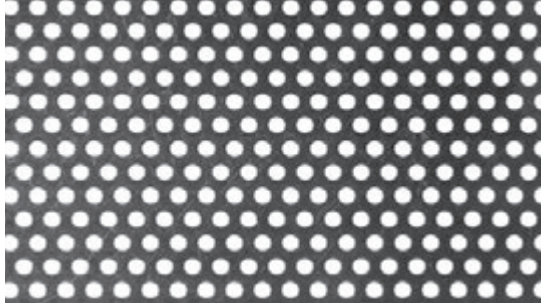


Products

We offer a wide array of colors, styles and materials to bring your vision to life. And if you still don't see what you're looking for, we'll create it for you.

Perforated

APOLLO 300



MATERIAL Aluminum T304 (S/S), T316 (S/S)
MAX WIDTH 60" (1500mm)
OPEN AREA 30%
THICKNESS 0.04"-0.12" (1.0-3.0mm) (A)
 0.02"-0.06" (0.5-1.5mm) (S/S)
APPLICATIONS Car Park Screens, Facades, Security Screens,
 Infill Panels, Partitions & Balustrades

AZTEC



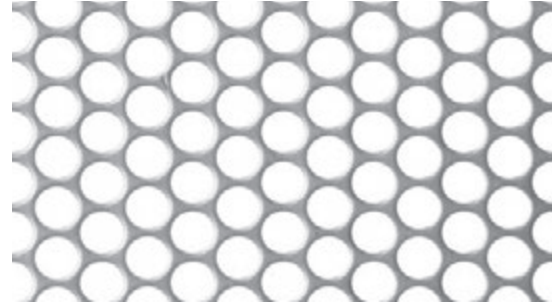
MATERIAL Aluminum
MAX WIDTH 60" (1500mm)
OPEN AREA 28%
THICKNESS 0.125" (3.0mm)
APPLICATIONS Facades, Balustrade Infills, Decorative Panels,
 Ceiling Tiles & Partitions

CHAMPAGNE



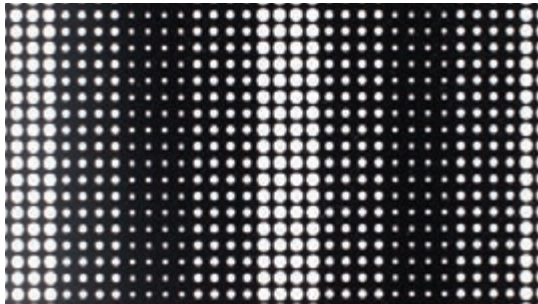
MATERIAL Aluminum
MAX WIDTH 60" (1500mm)
OPEN AREA 22%
THICKNESS 0.125" (3.0mm)
APPLICATIONS Balustrade Infills, Decorative Panels, Cladding,
 Facades, Ceiling Tiles, Privacy Screens &
 Partitions

CLARITY 800



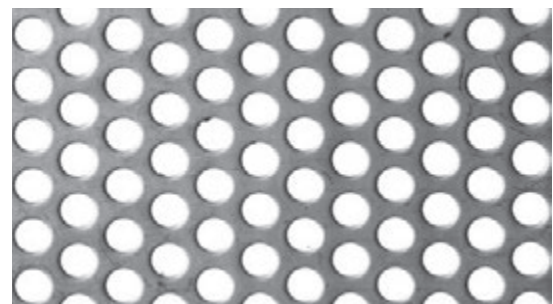
MATERIAL Aluminum, T304 (S/S), T316 (S/S)
MAX WIDTH 60" (1500mm)
OPEN AREA 62%
THICKNESS 0.04"-0.12" (1.0-3.0mm) (A)
 0.02"-0.06" (0.5-1.5mm) (S/S)
APPLICATIONS Car Park Screens, Facades, Security Screens,
 Infill Panels, Partitions & Balustrades

DOMINO 358



MATERIAL Aluminum
MAX WIDTH 60" (1500mm)
OPEN AREA 25%
THICKNESS 0.125" (3.0mm)
APPLICATIONS Facades, Balustrade Infills, Decorative Panels,
 Ceiling Tiles & Partitions

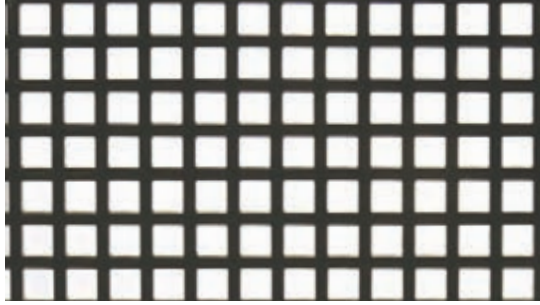
ECLIPSE 600



MATERIAL Aluminum, T304 (S/S), T316 (S/S)
MAX WIDTH 60" (1500mm)
OPEN AREA 40%
THICKNESS 0.05"-0.24" (1.2-6.0mm) (A)
 0.04"-0.16" (0.9-4.0mm) (S/S)
APPLICATIONS Facades, Security Screens, Infill Panels,
 Partitions & Balustrades

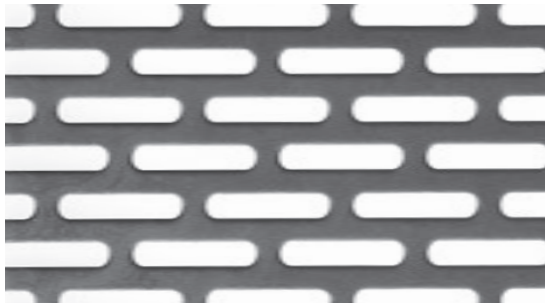
Perforated

FORTE 800



MATERIAL T316 (S/S), Steel, Aluminum
MAX WIDTH 47" (1200mm)
OPEN AREA 53%
THICKNESS 0.04"-0.08" (1.0-2.0mm) (S)
 0.04"-0.06" (0.9-1.5mm) (S/S)
 0.04"-0.12" (1.0-3.0mm) (A)
APPLICATIONS Decorative Screens (Internal or External),
 Fencing, Balustrade Infill, Partitions &
 Car Park Screens

NICHE 250



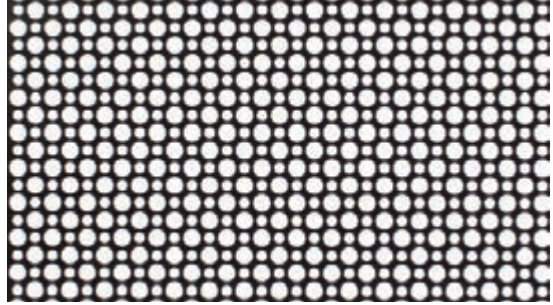
MATERIAL Aluminum, T304 (S/S), T316 (S/S)
MAX WIDTH 60" (1500mm)
OPEN AREA 40%
THICKNESS 0.05"-0.20" (1.2-5.0mm) (A)
 0.05"-0.10" (1.2-2.5mm) (S/S)
APPLICATIONS Facades, Security Screens, Infill Panels,
 Partitions & Balustrades

PIC PERF DIRECTIONS



MATERIAL Aluminum
MAX WIDTH 55" (1400mm)
OPEN AREA 51%
THICKNESS 0.12" (3.0mm)
WEIGHT 193 LBS (8.13 KG/M²)
APPLICATIONS Car Park Screens, Balustrades, Cladding
 & Facades

MOROCCO



MATERIAL Aluminum
MAX WIDTH 60" (1500mm)
OPEN AREA 51%
THICKNESS 0.125" (3.0mm)
APPLICATIONS Car Park Screens, Facades, Balustrade Infills,
 Decorative Panels & Ceiling Tiles

ORBIT 19



MATERIAL Aluminum, Steel & Stainless Steel
MAX WIDTH 59" (1500mm)
OPEN AREA 23%
THICKNESS 0.12" (3.0mm) (A)
 0.08" (2.0mm) (S)
APPLICATIONS Balustrade Infills, Decorative Panels,
 Ceiling Tiles, Partitions & Privacy

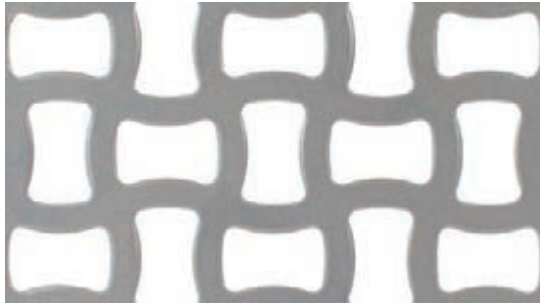
PRISM



MATERIAL Aluminum, Steel
MAX WIDTH 59" (1500mm)
OPEN AREA 62%
THICKNESS 0.12" (3.0mm) (A)
 0.08" (2.0mm) (S)
APPLICATIONS Car Park Screens, Facades, Balustrade Infills
 & Decorative Panels

Perforated

RIBBON



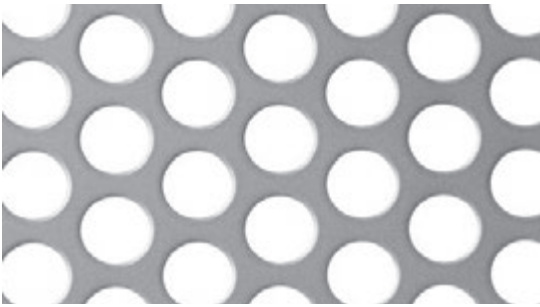
MATERIAL Aluminum
MAX WIDTH 59" (1500mm)
OPEN AREA 51%
THICKNESS 0.12" (3.0mm) - 0.20" (5.0mm)
APPLICATIONS Car Park Screens, Facades, Security Screens, Infill Panels, Partitions & Balustrades

SHEER 2800



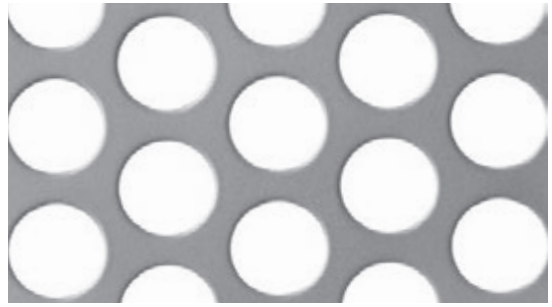
MATERIAL Aluminum, Steel
MAX WIDTH 47" (1200mm)
OPEN AREA 73%
THICKNESS 0.12" (3.0mm) (A)
WEIGHT 101 LBS (4.24 KG/M²) (S)
 52 LBS (2.20 KG/M²) (A)
APPLICATIONS Car Park Screens, Facades, Balustrade Infills, Decorative Panels & Ceiling Tiles

TITAN 120



MATERIAL Aluminum, T304 (S/S), T316 (S/S)
MAX WIDTH 60" (1500mm)
OPEN AREA 49%
THICKNESS 0.06" - 0.39" (1.6-10.0mm) (A)
 0.04" - 0.24" (0.9-6.0mm) (S/S)
APPLICATIONS Car Park Screens, Facades, Security Screens, Infill Panels, Partitions & Balustrades

TITAN 190



MATERIAL Aluminum, T304 (S/S), T316 (S/S)
MAX WIDTH 60" (1500mm)
OPEN AREA 51%
THICKNESS 0.06"-0.20" (1.6-5.0mm) (A)
 0.10"-0.20" (2.5-5.0mm) (S/S)
APPLICATIONS Car Park Screens, Facades, Security Screens, Infill Panels, Partitions & Balustrades

ULTIMO



MATERIAL Aluminum, Steel & Stainless Steel
MAX WIDTH 59" (1500mm)
OPEN AREA 34%
THICKNESS 0.12" (3.0mm) (A)
 0.08" (2.0mm) (S)
 0.06" (1.5mm) (S/S)
APPLICATIONS Facades, Balustrade Infills, Decorative Panels, Ceiling Tiles & Partitions

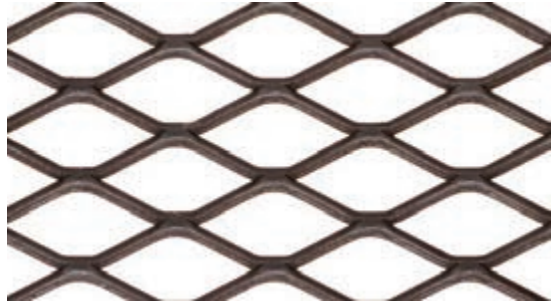
Expanded

09-16



MATERIAL Aluminum, Steel & Stainless Steel
WEIGHT 1.27 LB/FT² (6.2 KG/M²) (S)
 .45 LB/FT² (2.2 KG/M²) (A)
NOMINAL SIZE OF MESH LWM 28 SWM 9
THICKNESS .06" (1.6mm)
OPEN AREA 48-56%
STOCK STATUS Ex Stock and Custom Made

19-30



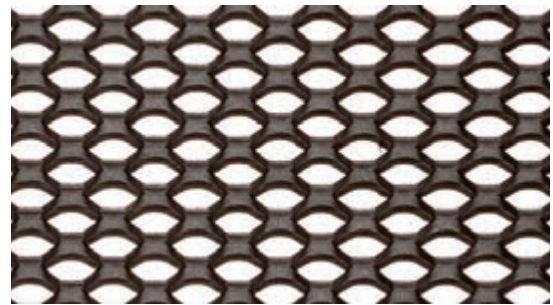
MATERIAL Aluminum, Steel, T304 (S/S), T316 (S/S)
WEIGHT 1.62 LB/FT² (7.9 KG/M²) (S)
 .59 LB/FT² (2.9 KG/M²) (A)
NOMINAL SIZE OF MESH LWM 50 SWM 19
THICKNESS .125" (3.0mm)
OPEN AREA 67-74%
STOCK STATUS Ex Stock and Custom Made

1225



MATERIAL Aluminum, Steel
WEIGHT 2.87 LB/FT² (14 KG/M²) (S)
 1.17 LB/FT² (5.7 KG/M²) (A)
NOMINAL SIZE OF MESH LWM 30 SWM 12
THICKNESS .01" (2.5mm)
OPEN AREA 26%
STOCK STATUS Ex Stock and Custom Made

JE PROFILE



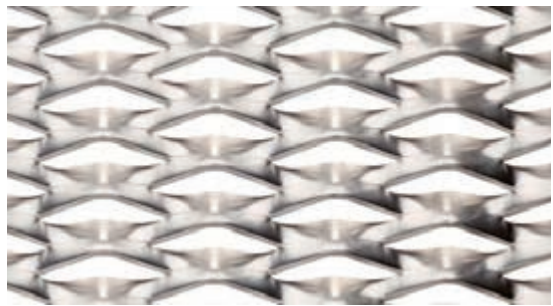
MATERIAL Aluminum, Steel
WEIGHT 2.66 LB/FT² - 3.48 LB/FT² (13-17 KG/M²) (S)
NOMINAL SIZE OF MESH LWM 19 SWM 11
THICKNESS .125" (3.0mm)
OPEN AREA 27-45%
STOCK STATUS Ex Stock and Custom Made

L7616 LOUVRE



MATERIAL Aluminum, Galvanized
WEIGHT .82 LB/FT² (4.02 KG/M²) (A)
 2.3 LB/FT² (11.2 KG/M²) (GB)
NOMINAL SIZE OF MESH LWM 76 SWM 16
THICKNESS .06" (1.6mm)
OPEN AREA 21-66%
STOCK STATUS Ex Stock and Custom Made

LM252625A



MATERIAL Aluminum
WEIGHT 1.02 LB/FT² (5 KG/M²)
NOMINAL SIZE OF MESH LWM 30 SWM 15
THICKNESS .01" (2.5mm)
OPEN AREA 26%
STOCK STATUS Custom Made

Expanded

SUN20



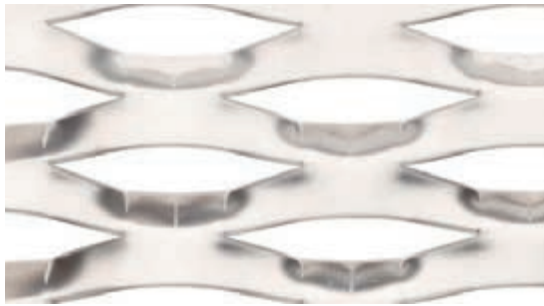
MATERIAL Aluminum, Galvabond, Steel, and Weathering Steel
WEIGHT .74 LB/FT² (3.6 KG/M²) (A)
2.15 LB/FT² (10.5 KG/M²) (S)
NOMINAL SIZE OF MESH LWM 120 SWM 34
THICKNESS .06" (1.6mm); .08" (2.0mm);
.125" (3.0mm)
OPEN AREA 35%
STOCK STATUS Custom Made

SUN636A



MATERIAL Aluminum, Galvabond, Steel
WEIGHT .74 LB/FT² (3.6 KG/M²) (A)
1.99 LB/FT² (9.7 KG/M²) (S)
NOMINAL SIZE OF MESH LWM 75 SWM 30
THICKNESS .06" (1.6mm)
OPEN AREA 23%
STOCK STATUS Ex Stock and Custom Made

SUN919A



MATERIAL Aluminum, Weathering Steel
WEIGHT 1.30 LB/FT² (6.33 KG/M²) (A)
3.67 LB/FT² (17.9 KG/M²) (WS)
NOMINAL SIZE OF MESH LWM 135 SWM 45
THICKNESS .125" (3.0mm)
OPEN AREA 25%
STOCK STATUS Ex Stock and Custom Made

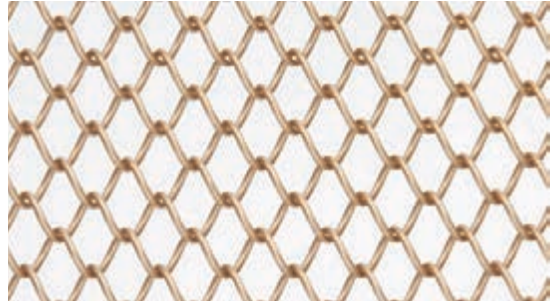
Wire Mesh

TRANSIT 091



MATERIAL T316 (S/S)
MAX WIDTH 118" (3000mm)
OPEN AREA 76%
WEIGHT 0.54 LB/FT²
 (2.64 KG/M²)
APPLICATIONS Building Facades, Curtain Ceilings

TRANSIT 100



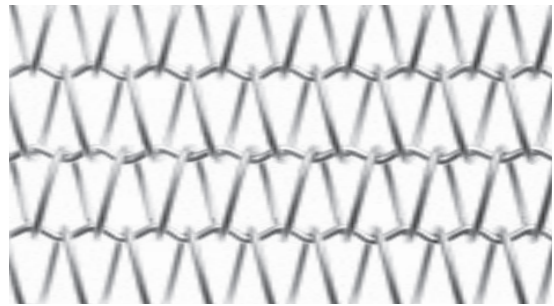
MATERIAL Stainless Steel & Mild Steel
MAX WIDTH 118" (3000mm)
OPEN AREA 74%
WEIGHT 0.78 LB/FT²
 (3.8 KG/M²)
APPLICATIONS Curtains, Internal Features

TRANSIT 210



MATERIAL Mild Steel Painted
MAX WIDTH 197" (5000mm)
OPEN AREA 56%
WEIGHT 0.94 LB/FT²
 (4.56 KG/M²)
APPLICATIONS Building Facades, Curtain Ceilings

TRANSIT 210



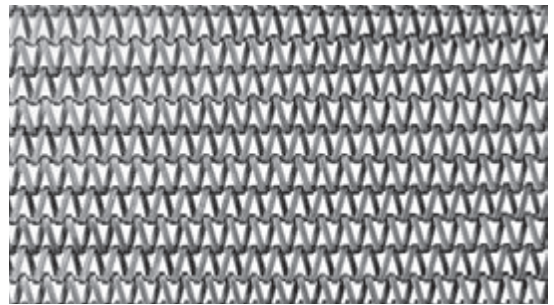
MATERIAL T316 (S/S), Brass
MAX WIDTH 197" (5000mm)
OPEN AREA 56%
WEIGHT 0.94 LB/FT²
 (4.56 KG/M²) (S/S)
APPLICATIONS Building Facades, Curtain Ceilings

TRANSIT 223RR



MATERIAL T316 (S/S)
MAX WIDTH 157.5" (4000mm)
WEIGHT 1.09 LB/FT²
 (10.8 KG/M²)
APPLICATIONS Building Facades, Curtain Ceilings

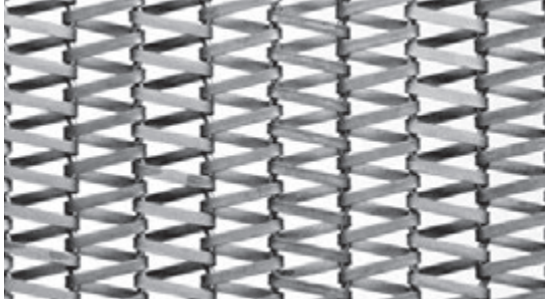
TRANSIT F160



MATERIAL T316 (S/S)
MAX WIDTH 118" (3000mm)
OPEN AREA 19%
WEIGHT 2.09 LB/FT²
 (10.2 KG/M²)
APPLICATIONS Facades, Curtains & Sunshades

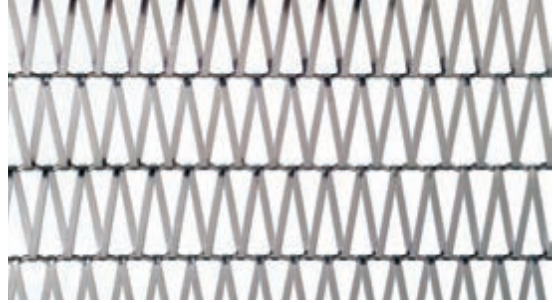
Wire Mesh

TRANSIT F281



MATERIAL T316 (S/S), Mild Steel Painted
MAX WIDTH 118" (3000mm)
OPEN AREA 30%
WEIGHT 1.76 LB/FT²
(8.6 KG/M²) (S/S)
APPLICATIONS Building Facades, Roller Curtains

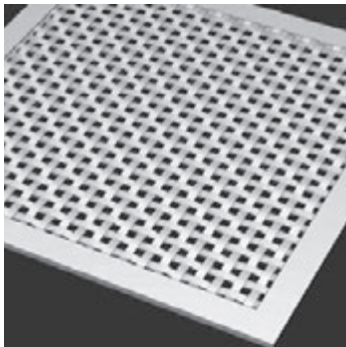
TRANSIT F360



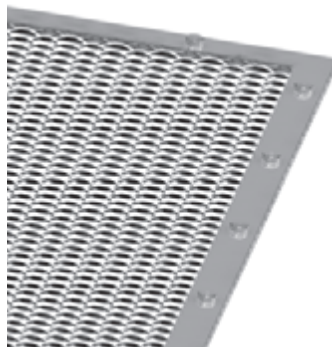
MATERIAL T316 (S/S)
MAX WIDTH 197" (5000mm)
OPEN AREA 61%
WEIGHT 2.21 LB/FT²
(10.8 KG/M²)
APPLICATIONS Building Facades, Features

Attachment Systems

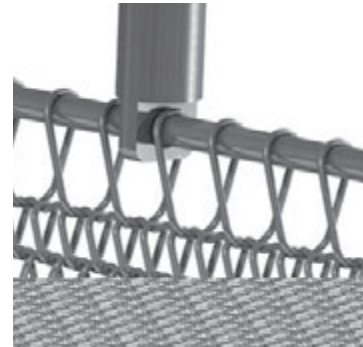
Our attachment systems are held to the same high standards for personality and functionality as every other product we create.



L3.0A Cap System



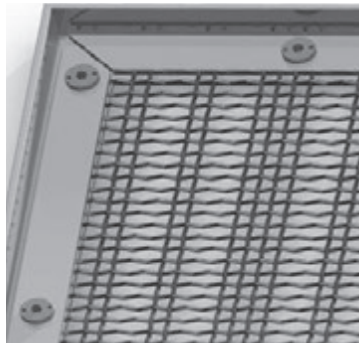
L2.0A Flat Bar System



L5.1A Petite Aperture
Tension System



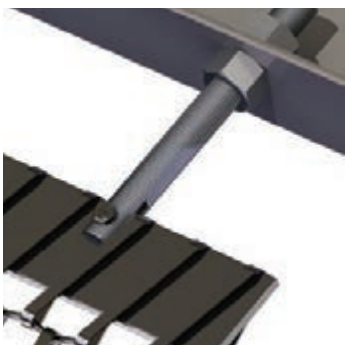
LA 100.1 Atmosphere System



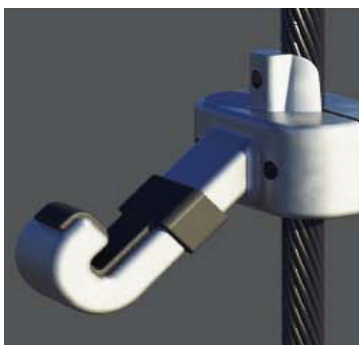
L1.0A Angle System



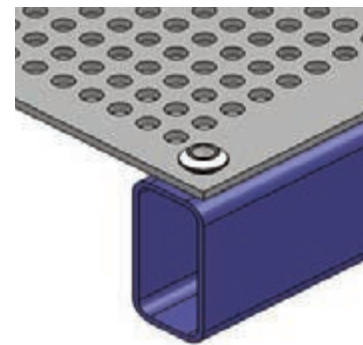
L4.0A Spider System



L5.2 Large Aperture
System



EC1 Clamp



Isolator

Copyright © 2019 Valmont® Industries, Inc. All rights reserved. Valmont® Structures has a policy of continuous product improvement and development. As a result, certain changes in standard equipment, options, price, etc. may have occurred after the publication of this document. Some drawings and specifications may not be identical to current production. Valmont Structures reserves the right to change product design and specifications at any time without incurring obligations.



28800 Ida Street
Valley, Nebraska 68064 USA
941.402.3554 | 800.825.6668
facades@valmont.com

valmontstructures.com/facades