

The background is a light blue gradient with several realistic water droplets of various sizes scattered across it. Some droplets are at the top, some at the bottom, and some on the right side. They have highlights and shadows, giving them a 3D appearance.

OUR LITTLE FRIENDS LES PETITS AMIS PLAYSCHOOL

22 MAIN ST
ARDROSSAN, AB

780-920-5660

ourlittlefriendsplayschool@gmail.com

WHO ARE WE?

WE OFFER PROGRAMMING IN BOTH ENGLISH AND FRENCH FOR CHILDREN AGED 3-5 YEARS OLD.

OUR PHILOSOPHY IS TO DEVELOP AND ENCOURAGE A CHILD'S SENSE OF COOPERATION, INDEPENDENCE AND SOCIALIZATION. WE ARE ABLE TO FOSTER THESE SKILLS IN A SAFE, SUPPORTIVE, AND ENGAGING ENVIRONMENT THROUGH OPEN PLAY AND STRUCTURED ACTIVITIES THAT ARE AGE-APPROPRIATE YET CHALLENGING.

OUR GOAL IS TO PROVIDE THE MENTAL AND PHYSICAL STIMULATION NECESSARY TO DEVELOP THE SKILLS, KNOWLEDGE AND BEHAVIOURS REQUIRED FOR FUTURE LEARNING SUCCESS.

PROGRAMMING

FRENCH

MONDAY/WEDNESDAY AM

9:00-11:30

ENGLISH

MONDAY/WEDNESDAY PM

12:30-3:00

ENGLISH

TUESDAY/THURSDAY AM

9:00-11:30

ENGLISH

TUESDAY/THURSDAY PM

12:30-3:00

A DAY IN THE LIFE

MORNING CLASS (9:00-11:30)

9:00- DROP OFF, FREE PLAY
9:20- CALENDAR/UNIT VOCAB/STAR
STUDENT
9:40- MOVEMENT BREAK
10:00- BATHROOM, HAND WASH
10:10- SNACK
10:30- QUIET TIME (LIBRARY, PUZZLES,
COLORING)
10:45- TEACHER LED ACTIVITIES/ CRAFTS
AND STORY OR OUTDOOR PLAY
11:30- PICKUP

AFTERNOON CLASS (12:30-3:00)

12:30- DROP OFF, FREE PLAY
12:50- CALENDAR/UNIT VOCAB/STAR
STUDENT
1:10- MOVEMENT BREAK
1:30- BATHROOM, HAND WASH
1:45- SNACK
2:00- QUIET TIME (LIBRARY,
PUZZLES, COLORING)
2:15- TEACHER LED ACTIVITIES,
CRAFTS, STORY OR OUTDOOR PLAY
3:00- PICKUP

THE FIRST DAYS OF SCHOOL

WE ARE SO EXCITED TO WELCOME YOUR CHILD TO SCHOOL!

- THE BUILDING DOORS WILL BE OPEN
- STUDENTS REMOVE THEIR OUTSIDE SHOES AT THE BUILDING ENTRANCE (UPSTAIRS)
- THE CLASSROOM DOORS WILL OPEN AT CLASS START TIME (9:00/12:30)
- PARENTS SAY GOOD BYES AT THE DOOR
- STUDENTS FIND THEIR LOCKERS, PUT ON THEIR INSIDE SHOES AND SIGN IN FOR THE DAY

THE TEACHERS ARE HAPPY TO SUPPORT THE STUDENTS THROUGH THIS PROCESS. FOR CHILDREN WHO HAVE A HARDER TIME LEAVING THEIR ADULTS, PLEASE LET THE TEACHERS KNOW AND WE WILL BE HAPPY TO ASSIST IN THE GOOD BYES AND WALK YOUR CHILD THROUGH THE ROUTINE.

PREPARE FOR SUCCESS

STUDENTS WILL NEED TO BRING EVERYDAY:

- A BACKPACK
- NON-SPILL WATER BOTTLE
- NUT FREE SNACKS
- WEATHER APPROPRIATE OUTDOOR GEAR
(SNOW/RAIN BOOTS, SNOW/SLUSH PANTS, MITTS, HAT, JACKET...)

❖ WE GO OUTSIDE IN ALL KINDS OF WEATHER

THESE STAY AT THE SCHOOL:

- INDOOR SHOES THAT YOUR CHILD CAN PUT ON THEMSELVES
- SPARE SET OF CLOTHES
 - ☐ PANTS
 - ☐ SHIRT
 - ☐ SOCKS
 - ☐ UNDERWEAR
 - ☐ PULL UPS (IF NEEDED)

LEARNING IN NATURE PROGRAM

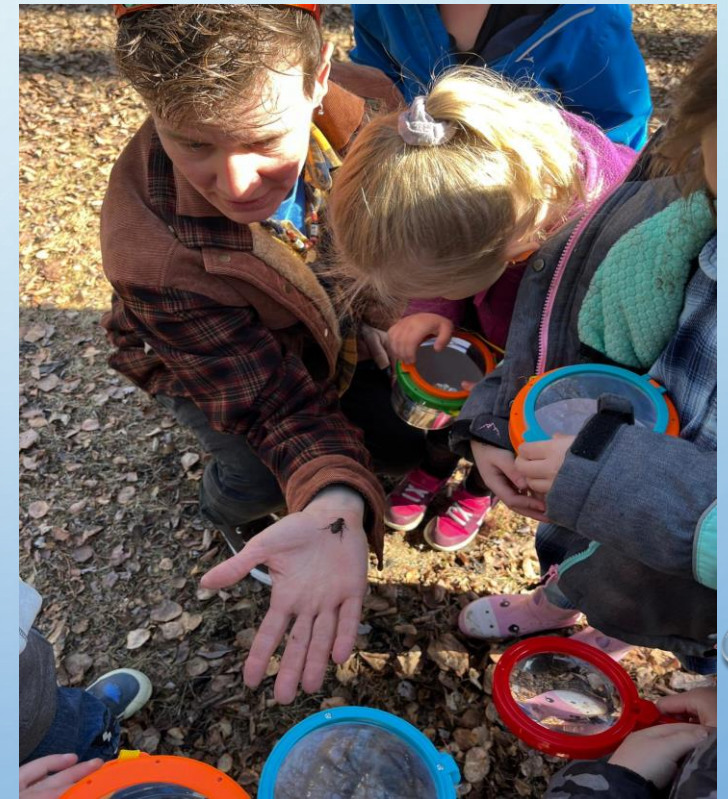
OUTDOOR CLASSROOM



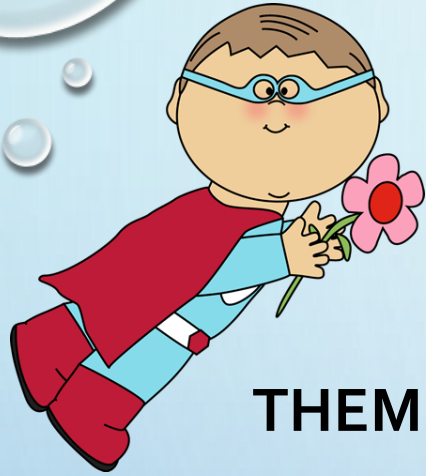
WE HAVE BEEN WORKING HARD TO CREATE A NATURE PROGRAM THAT ENGAGES AND CHALLENGES THE CHILDREN OUTSIDE OF THE "TYPICAL CLASSROOM".

WE HAVE CREATED A LEARNING SPACE OUTSIDE FOR GUIDED ACTIVITIES AND STORIES. WE ALSO ENCOURAGE THE STUDENTS TO EXPLORE AND DISCOVER WHAT NATURE HAS TO OFFER THROUGH THE USE OF OUR SENSES.

OUTDOOR EXPLORATION



IN THE CLASSROOM



THEME DAYS

EVERY MONTH WE ENCOURAGE THE KIDS TO GET CREATIVE WITH OUR THEME DAYS.

IN THE PAST WE HAVE DONE:

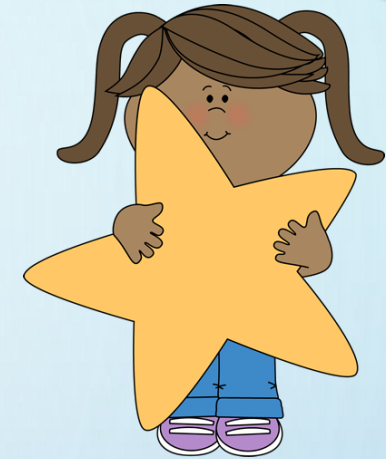
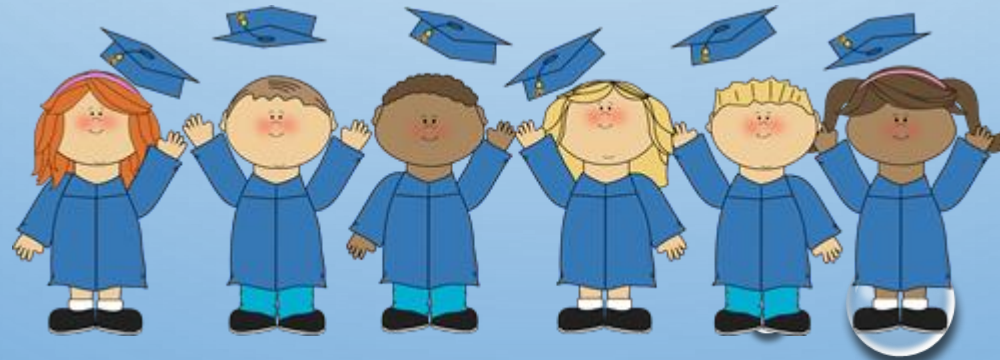
- SPORTS DAY/JERSEY DAY
- RAINBOW DAY
- WACKY WILD HAIR DAY
- SUPER HERO DAY
- DISNEY DAY

HOLIDAYS

WE LIKE TO INVITE THE PARENTS FOR SOME OF THE BIG EVENTS.

PARENTS ARE WELCOME TO JOIN US FOR OUR:

- HALLOWEEN PARTY
- CHRISTMAS PARTY
- MOTHER'S DAY CELEBRATION
- FATHER'S DAY CELEBRATION
- YEAR END/GRADUATION PARTY!



STAR STUDENT

EACH DAY WE HAVE A STAR STUDENT. WE ROTATE THROUGH THE CLASS LIST, GIVING EACH CHILD AN OPPORTUNITY TO BE THE STAR STUDENT AT LEAST TWICE.

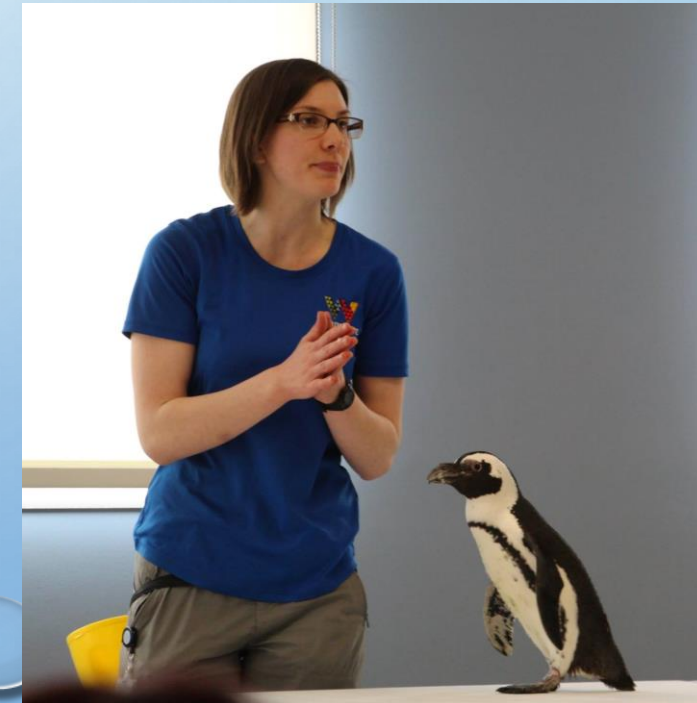
THE STAR STUDENT:

- HELPS THE TEACHERS LEAD CALENDAR
- SHARES A "SHOW AND TELL"
- IS THE SPECIAL HELPER FOR THE DAY
- IS THE LINE LEADER FOR THE DAY



FIELD TRIPS/VISITORS

- WE OFTEN LEAVE THE SCHOOL TO GO ON NATURE/SENSES WALKS AROUND OUR COMMUNITY
- WE WALK TO THE LOCAL PARKS AND FIELDS TO WORK ON GROSS MOTOR SKILLS
- WE DO ON-SITE FIELD TRIPS:
 - LOCAL ART COMPANIES HAVE JOINED OUR CLASS FOR CRAFTS AND THEATRE
 - COMMUNITY WORKERS READ TO US AND TEACH US ABOUT SAFETY
 - WE HAVE INVITED SPECIAL ANIMAL VISITORS
- WE DO OFF-SITE FIELD TRIPS:
 - WE HAVE VISITED LOCAL GREENHOUSES
 - WE HAVE VISIT THE EDMONTON VALLEY ZOO





IN THE COMMUNITY

OUR LITTLE FRIENDS/LES PETITS AMIS PLAYSCHOOL SUPPORTS
OUR COMMUNITY!

- THE STRATHCONA COUNTY BOOKMOBILE VISITS US ONCE A MONTH. THE STUDENTS ARE INVITED ONTO THE BUS AND ARE GIVEN THE OPPORTUNITY TO SELECT WHICH BOOKS WILL BE IN OUR LIBRARY FOR THE MONTH
- WE INVITE STRATHCONA COUNTY RCMP, FIRE DEPARTMENT AND WILDLIFE OFFICERS TO OUR CLASSROOM TO BETTER UNDERSTAND THE PEOPLE AND WILDLIFE IN OUR COMMUNITY
- WE GO OUT INTO THE COMMUNITY TO LEARN ABOUT THE ENVIRONMENT AROUND US AND LEND A HELPING HAND



VOLUNTEER

BOARD OF DIRECTORS

- AS A NON-PROFIT ORGANIZATION THE SCHOOL IS UNDER THE GUIDANCE OF A BOARD COMPRISED OF PARENT VOLUNTEERS WHO WORK TOGETHER WITH THE EXECUTIVE DIRECTOR TO ENSURE THAT THE PLAYSCHOOL IS A SUCCESS
- SERVING ON THE BOARD PROVIDES THE PARENTS WITH THE OPPORTUNITY TO PARTICIPATE IN THE DEMOCRATIC PROCESS OF BUILDING, MANAGING AND IMPROVING THE PLAYSCHOOL
- BOARD MEMBERS ARE ACTIVELY INVOLVED IN THE DECISION-MAKING PROCESS IN MANY ASPECTS OF THE PRESCHOOL (BYLAWS, POLICIES & PROCEDURES, FUNDRAISING, BUDGETING, GRANTS AND BUSINESS OPERATIONS)

IN THE CLASSROOM

- AFTER A TOY ROTATION, WE HAVE A PARENT COME IN ONCE A MONTH FOR APPROX. 45 MINUTES TO WASH/SANITIZE THE TOYS
- ONCE A MONTH WE HAVE HOT LUNCH. WE HAVE A PARENT COME IN TO PREPARE AND SERVE THE SNACK
- FOR HOLIDAYS/EVENTS, PARENTS CAN SIGN UP TO BRING IN SUPPLIES



HOT LUNCH

ONCE A MONTH WE HOST A HOT LUNCH TO RAISE MONEY FOR OUR CLASSROOM.

THE STUDENTS CAN BRING IN A TOONIE TO BUY THE MEAL OF THE DAY!

IN THE PAST WE HAVE DONE:

- PANCAKES
- HOT DOGS
- SCRAMBLED EGGS AND HASHBROWNS
- PASTA
- CHEESY QUESADILLAS
- WAFFLES

MINI FUNDRAISERS

CHRISTMAS ART CARDS

WE SCAN YOUR CHILD'S ART ONTO A 5X7 CARD (WITH ENVELOPE).

FOR \$2.00/CARD, YOU CAN ORDER AS MANY HOLIDAY CARDS AS YOU LIKE AND SEND THEM OUT TO YOUR FRIENDS AND FAMILY.

ORDERS DUE IN NOVEMBER TO ENSURE CARDS ARE DONE BY THE FIRST WEEK OF DECEMBER.



WE PARTICIPATE IN THE SCHOLASTIC BOOK CLUB. EACH MONTH WE SEND HOME FLYERS WITH A DIFFERENT SELECTION OF BOOKS OFFERED.

SCHOLASTIC ORDERS HELP THE SCHOOL BY AWARDING US A PERCENTAGE OF THE BOOK SALES TO GO TOWARDS CLASSROOM RESOURCES, BOOKS, AND EVEN GIFTS FOR THE STUDENTS.

OUR ORDER CODE: **RC146897**



TEACHER JILL

(LEVEL 1 ECE, H.S DIPLOMA IN FRENCH IMMERSION, DIPLOMA IN MEDICAL LABORATORY ASSISTANT AND MASSAGE THERAPY)

TEACHER JILL IS THE RECIPIENT OF CPF'S **2024 EDUCATOR OF THE YEAR AWARD!**

TEACHER JILL HAS BEEN A TEACHER WITH OLF/LPA FOR 7 YEARS, SHE HAS BEEN WORKING IN THE CLASSROOM WITH THE CHILDREN AND ENSURING THAT THEY FEEL SAFE AND WELCOMED EVERYDAY. PRIOR TO BECOMING A TEACHER, JILL VOLUNTEERED ON THE OLF/LPA BOARD OF DIRECTORS.

YOUR TEACHERS



TEACHER SAM

(LEVEL 3, BACHELORS OF EDUCATION)

TEACHER SAM HAS BEEN IN THE CLASSROOM FOR OVER 10 YEARS. SHE HAS MANY YEARS OF EXPERIENCE CREATING AND IMPLEMENTING PROGRAMMING THAT IS INCLUSIVE, INTERACTIVE AND ENGAGING. OVER THE LAST 10+ YEARS, TEACHER SAM HAS BEEN SPECIALIZING IN CHILDREN'S BRAIN DEVELOPMENT AND MENTAL HEALTH; WORKING WITH CHILDREN WHO STRUGGLE WITH ANXIETY, BEHAVIORS AND DELAYS.



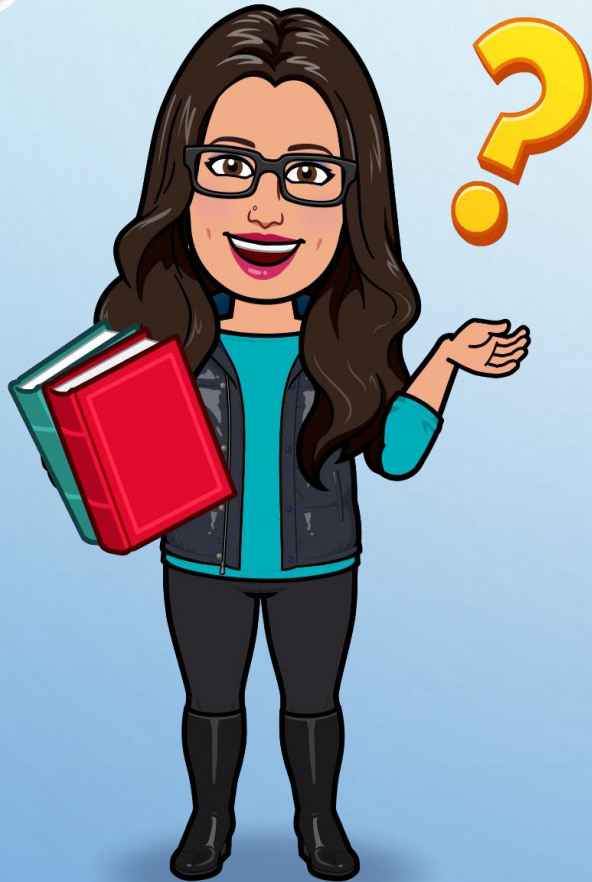
TEACHER KIM

(LEVEL 1 ECE,
BA ENGLISH/PHILOSOPHY/CRITICAL THEORY
MA ENGLISH, BA WILDLIFE AND FORESTRY
MANAGEMENT)

TEACHER KIM HAS BEEN IN THE CLASSROOM FOR 7 YEARS. HER FRANCOPHONE BACKGROUND IS A TREMENDOUS ASSET TO OUR FRENCH PROGRAMMING.

TEACHER KIM HAS BEEN INCORPORATING A LEARNING THROUGH NATURE APPROACH TO OUR PROGRAM, THEREFORE TAKING LEARNING OUT OF THE CLASSROOM AND INTO THE OUTDOORS.

Any Questions?



FAQ

- **COMMUNICATION:** ALL COMMUNICATION (MONTHLY NEWSLETTERS, CALENDAR, UPDATES, ETC.) WILL BE SENT VIA EMAIL. YOU CAN FOLLOW US ON FACEBOOK FOR UPDATES ON THEME DAYS, AND EVENTS!
- **CALENDAR:** THE CLASSROOM CALENDAR IS POSTED ON OUR WEBSITE AND IS UPDATED MONTHLY. WE FOLLOW THE ELK ISLAND PUBLIC SCHOOL CALENDAR.
- **FEES:** FEES ARE DUE ON THE 1ST OF EACH MONTH. PLEASE SEND YOUR MONTHLY FEE TO OURLITTLEFRIENDSPAYMENTS@GMAIL.COM WITH YOUR CHILD'S NAME AND CLASS IN THE NOTES LINE. (PLEASE PAY PAYMENTS FOR FIELDTRIPS AND HOT LUNCH BY CASH)
- **SICK DAYS:** IF YOUR CHILD WILL BE AWAY FROM SCHOOL, PLEASE LET US KNOW AT OURLITTLEFRIENDSPLAYSCHOOL@GMAIL.COM OR TEXT US AT 780-920-5660.
- **LATE PICK UP:** IF YOU ARE RUNNING LATE TO PICK UP YOUR CHILD, PLEASE TEXT US AT 780-920-5660.
- **SNOW DAYS:** IN THE EVENT EIPS CANCELS THEIR BUSES DUE TO WEATHER, THE PROGRAM WILL CLOSE FOR THE DAY. AFFECTED FAMILIES WILL BE NOTIFIED ASAP VIA EMAIL AND A POST WILL BE MADE ON FACEBOOK.