

SCRT Lab- Semi-Cylindrical Recession Trochleoplasty

Kenneth A. Bruecker, DVM, MS, DACVS, DACVSMR
Board Certified Veterinary Surgery
Board Certified Veterinary Sports Medicine and Rehabilitation

CONTINUING ORTHOPEDIC VETERINARY EDUCATION

Ventura, California USA

kbruecker@me.com

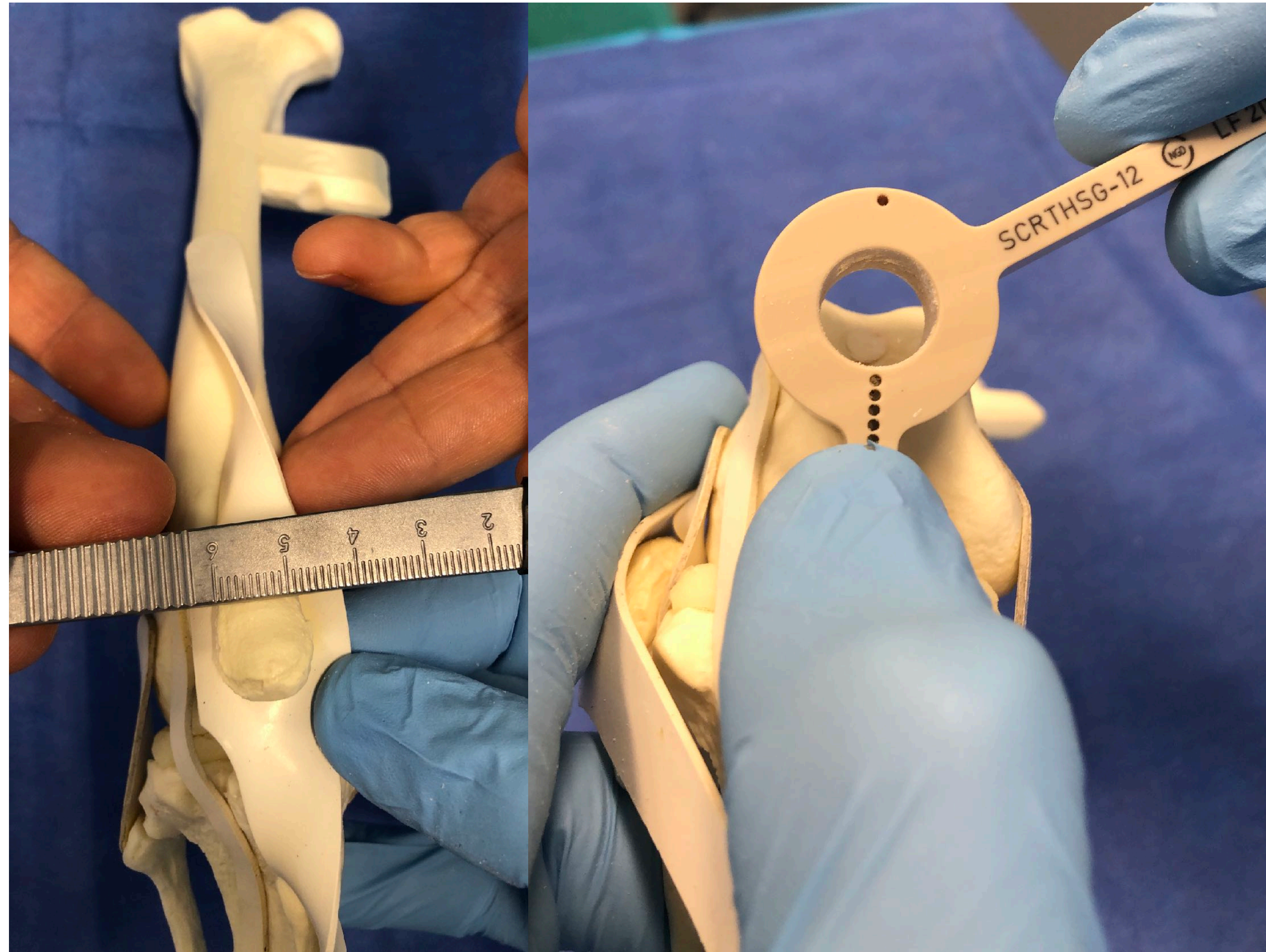


SCRT

Measure the width and depth of the patella

Measure the depth of the sulcus

Choose a saw guide wide enough to accommodate the width of the patella

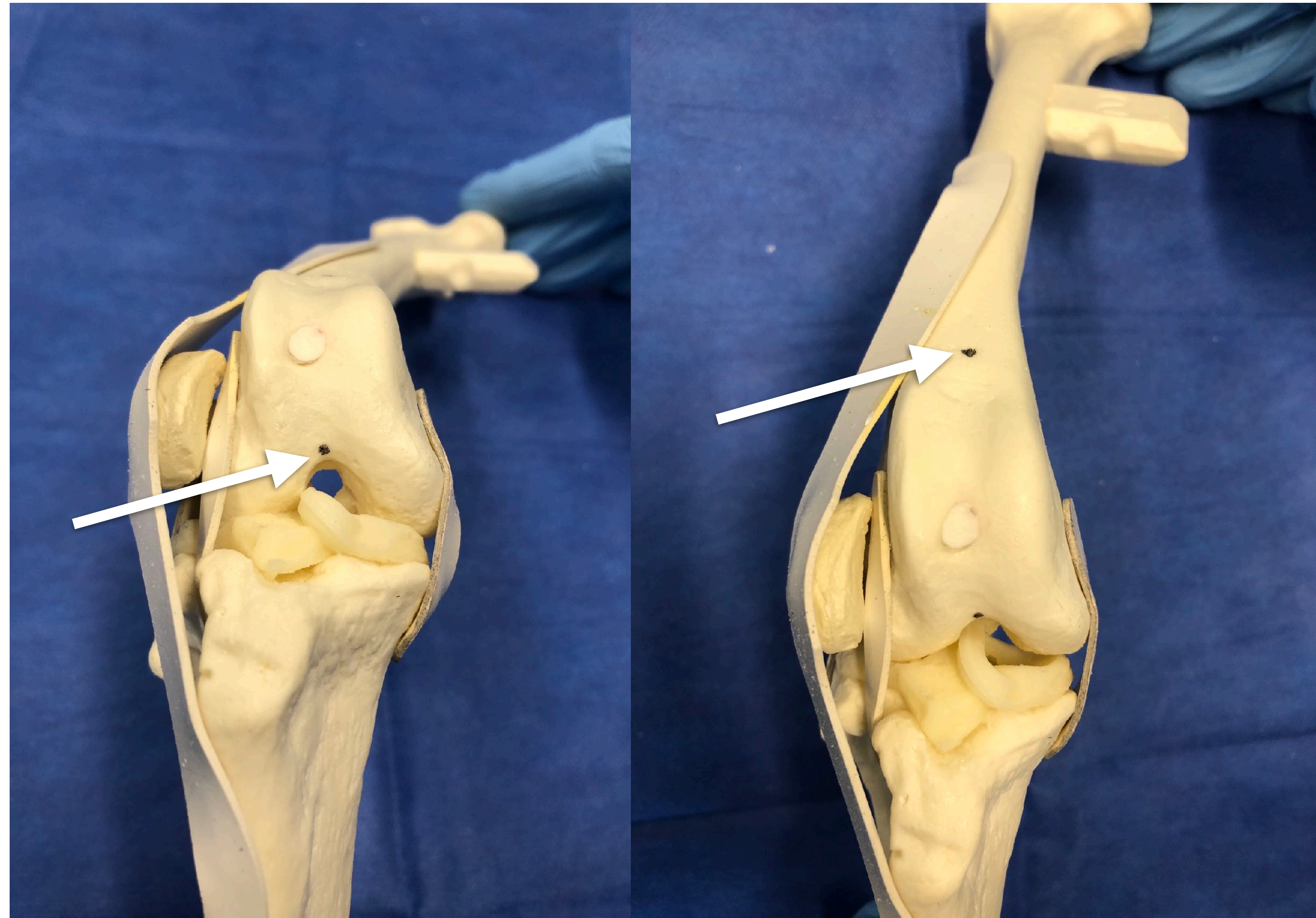


SCRT

Place a mark just proximal to the insertion of the caudal cruciate ligament.

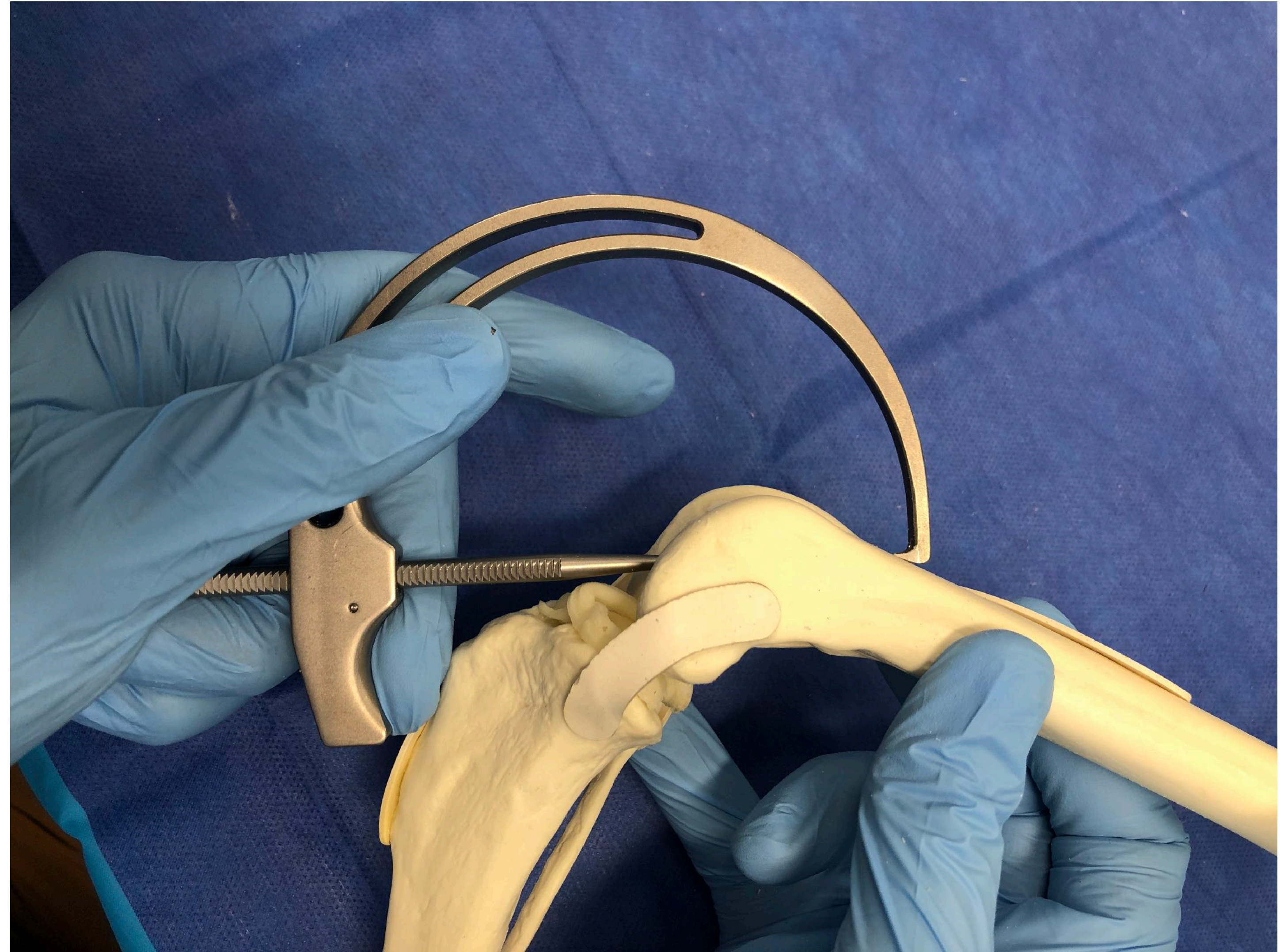
Place another mark proximal to the sulcus and centered on the sulcus.

These will be the insertion and exit points for the K-wire guide.



SCRT

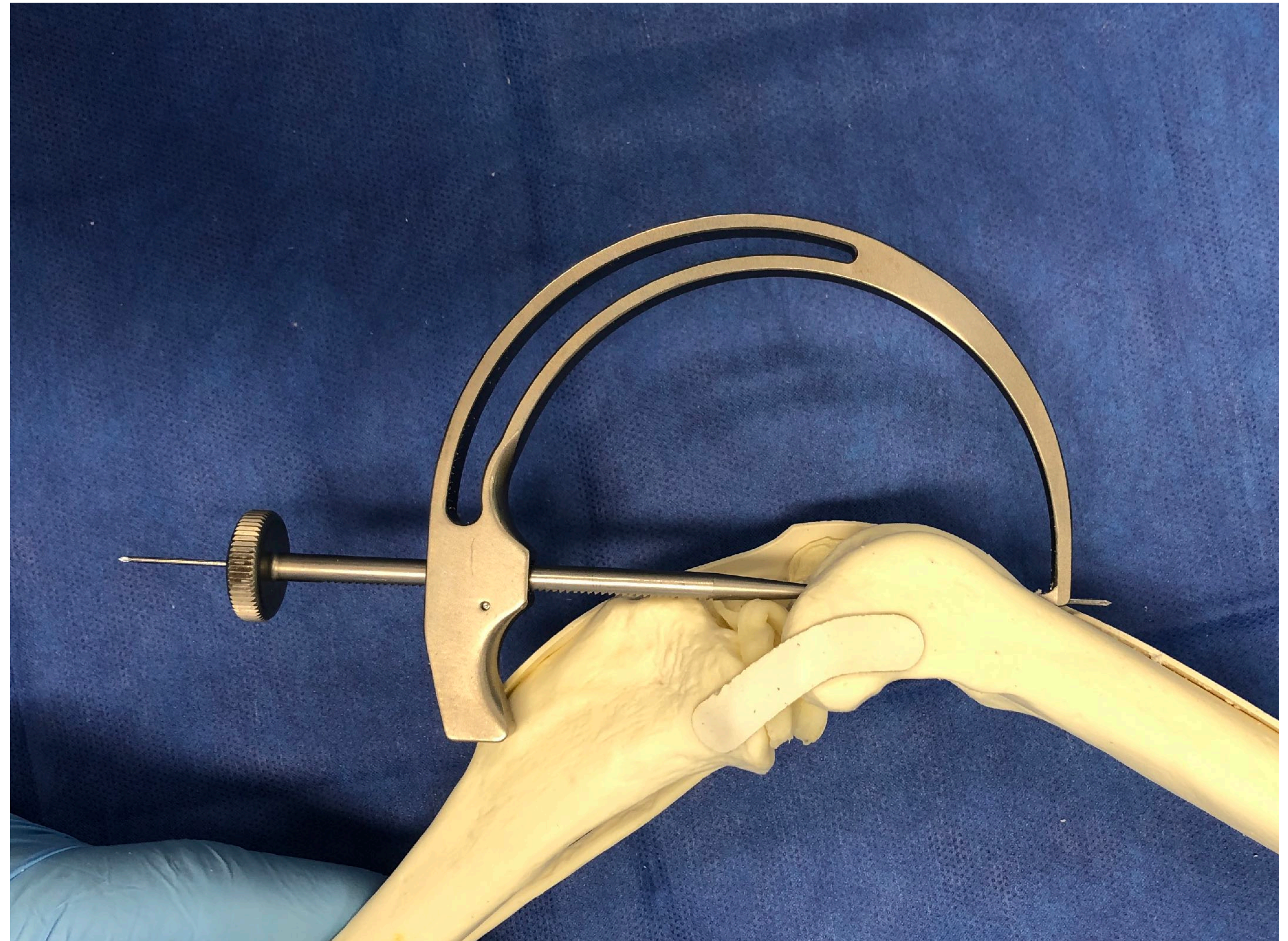
Place the aiming device on these
2 points



SCRT

Place the 0.45" K-wire.

Note: It is easy to bend and inadvertently redirect the K-wire.



SCRT

Remove the Aiming device.

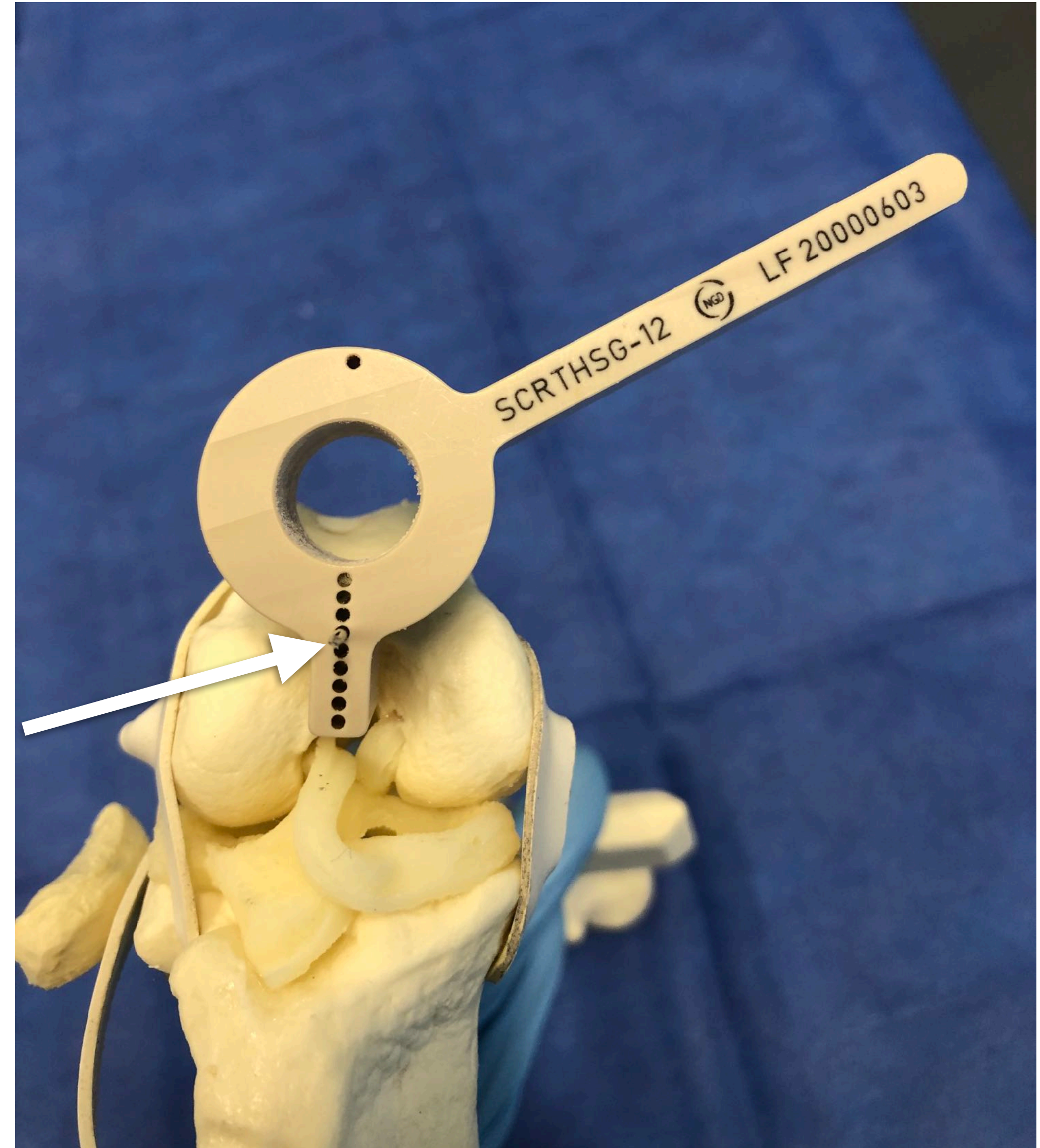


SCRT

Place the saw guide on the K-wire in a guide hole such that the graft can be harvested, then the guide will be dropped “down” to deepen the host sulcus.

In this example, the 12 mm diameter saw guide is on a hole 3 mm from the top hole of the saw guide. A second K-wire can be placed distal to the first one for better torsional stability.

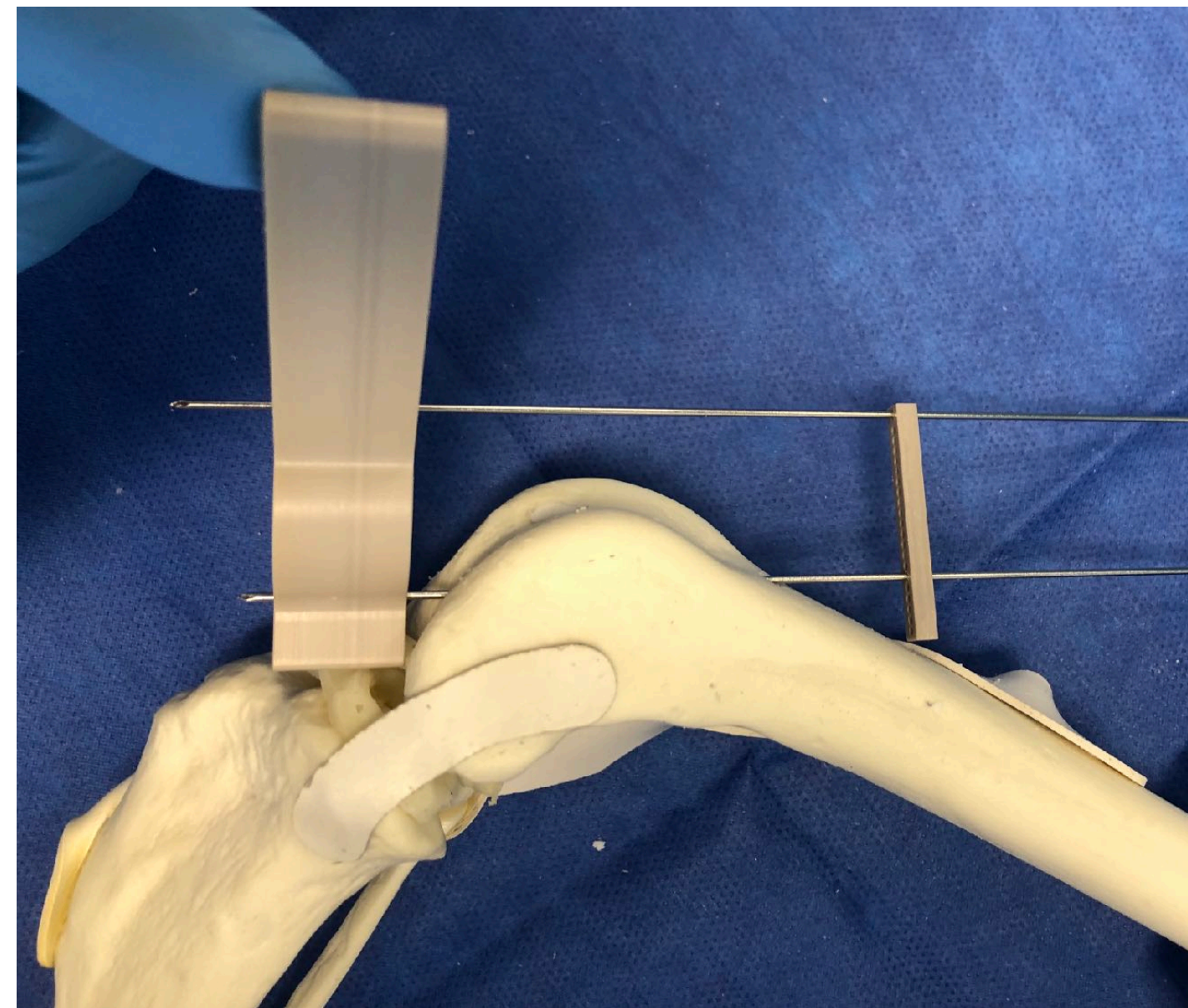
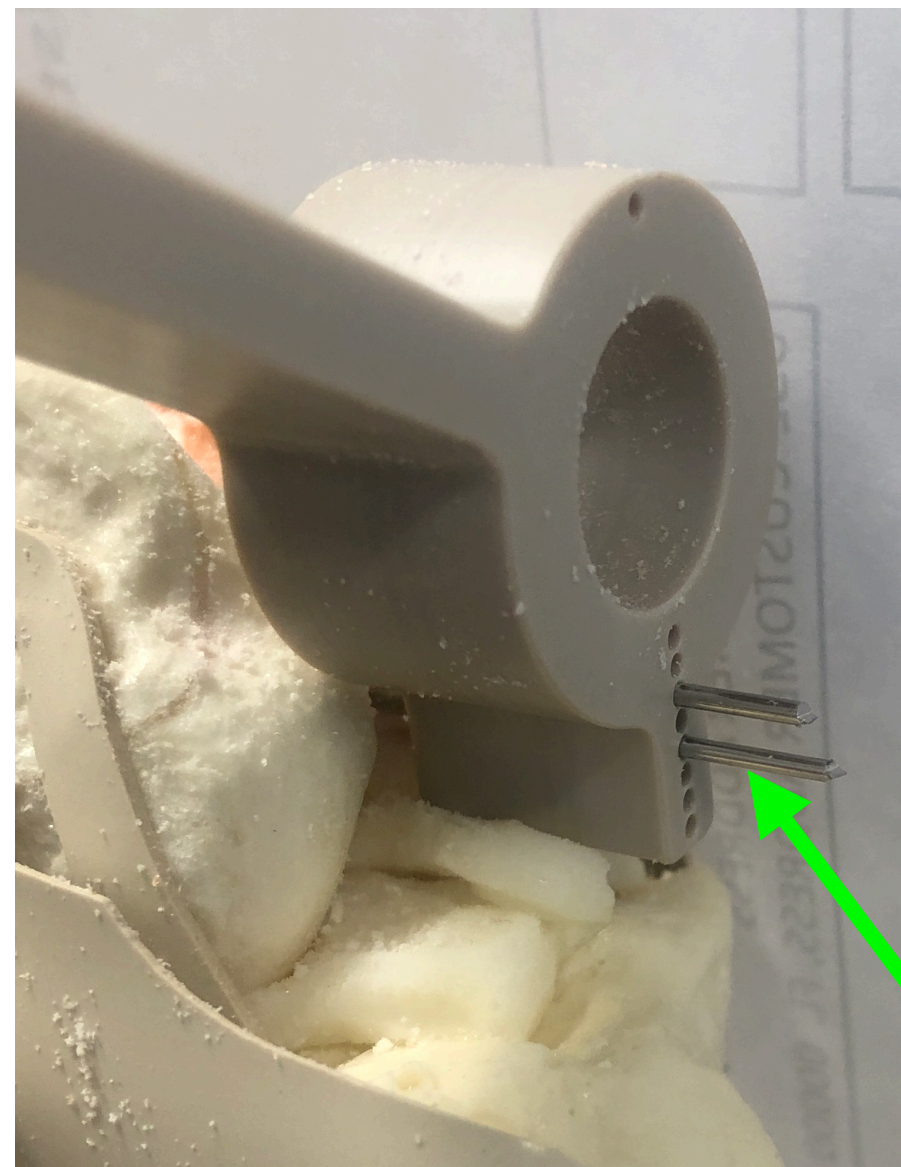
Note: Each K-wire guide hole is 1 mm apart. The goal is to deepen the sulcus to a depth about 50% of the patella height (thickness).



SCRT

A second K-wire can be placed in the hole at the “top” of the saw guide and an alignment bar used proximally.

I now prefer to place another K-wire below my guide wire for better rotational and angular stability.



SCRT

The hole saw of appropriate diameter (in this case 12 mm) is placed on the drill and the saw cut begun.

Note: These blades are sharp and little pressure is required. Take your time.



SCRT

The hole saw of appropriate diameter (in this case 12 mm) is placed on the drill and the saw cut begun.

Note: It is easy to bend the K-wire and inadvertently redirect the saw blade.

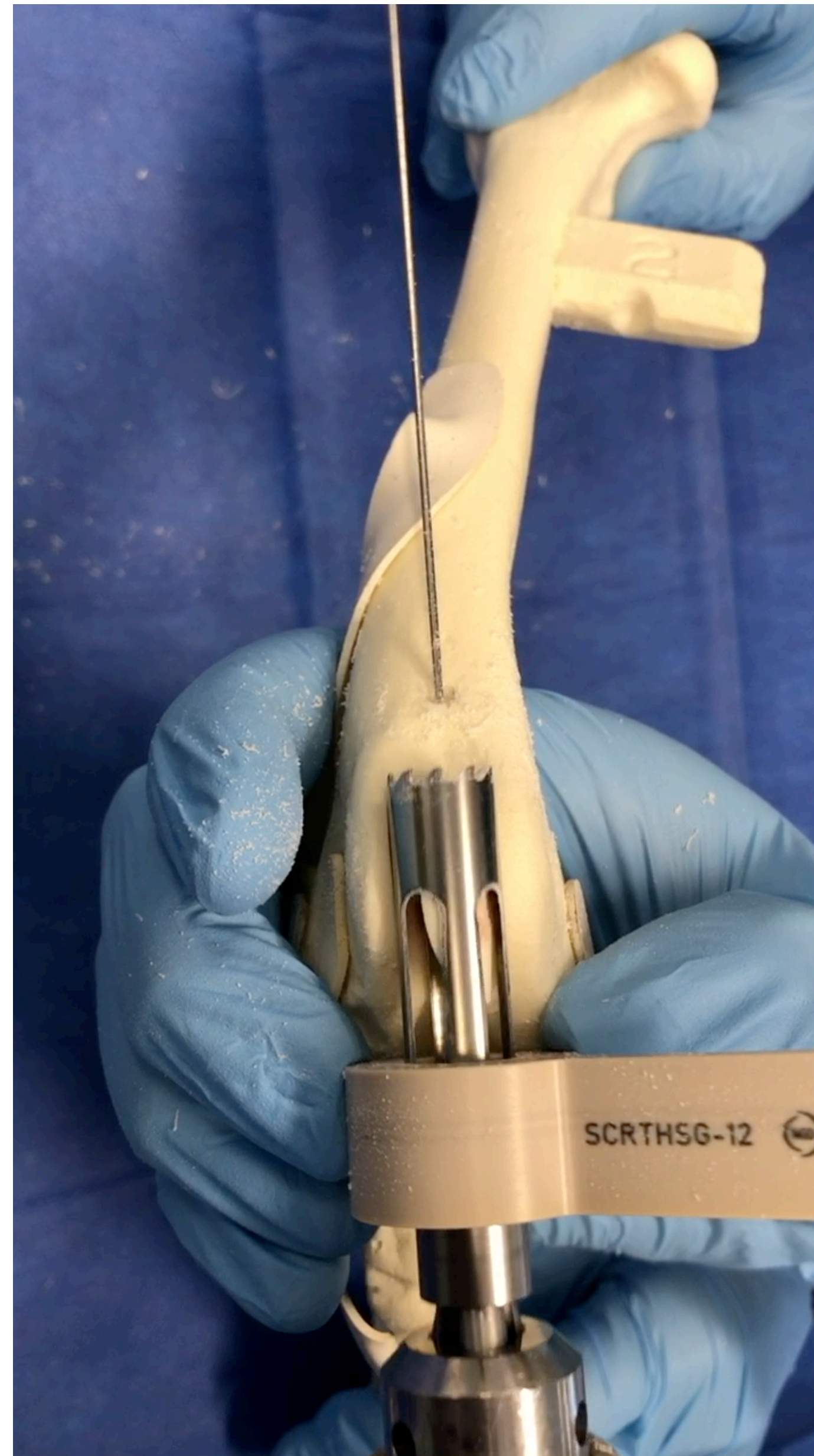


SCRT

The cut is finished proximally.

The graft should remain in the hole saw blade.

Note: The thickness of these hole saw blades is 0.5 mm, thus the width of the graft is 1 mm smaller than the bed.



SCRT

The host sulcus bed can be created with a hole saw blade that is 1 mm smaller to provide a more secure press fit.

In this case, the graft was harvested with a hole saw blade with 12 mm external diameter thus 11 mm internal diameter creating an 11 mm wide graft. Thus, an 11 mm hole saw guide and blade are chosen to create the host bed.



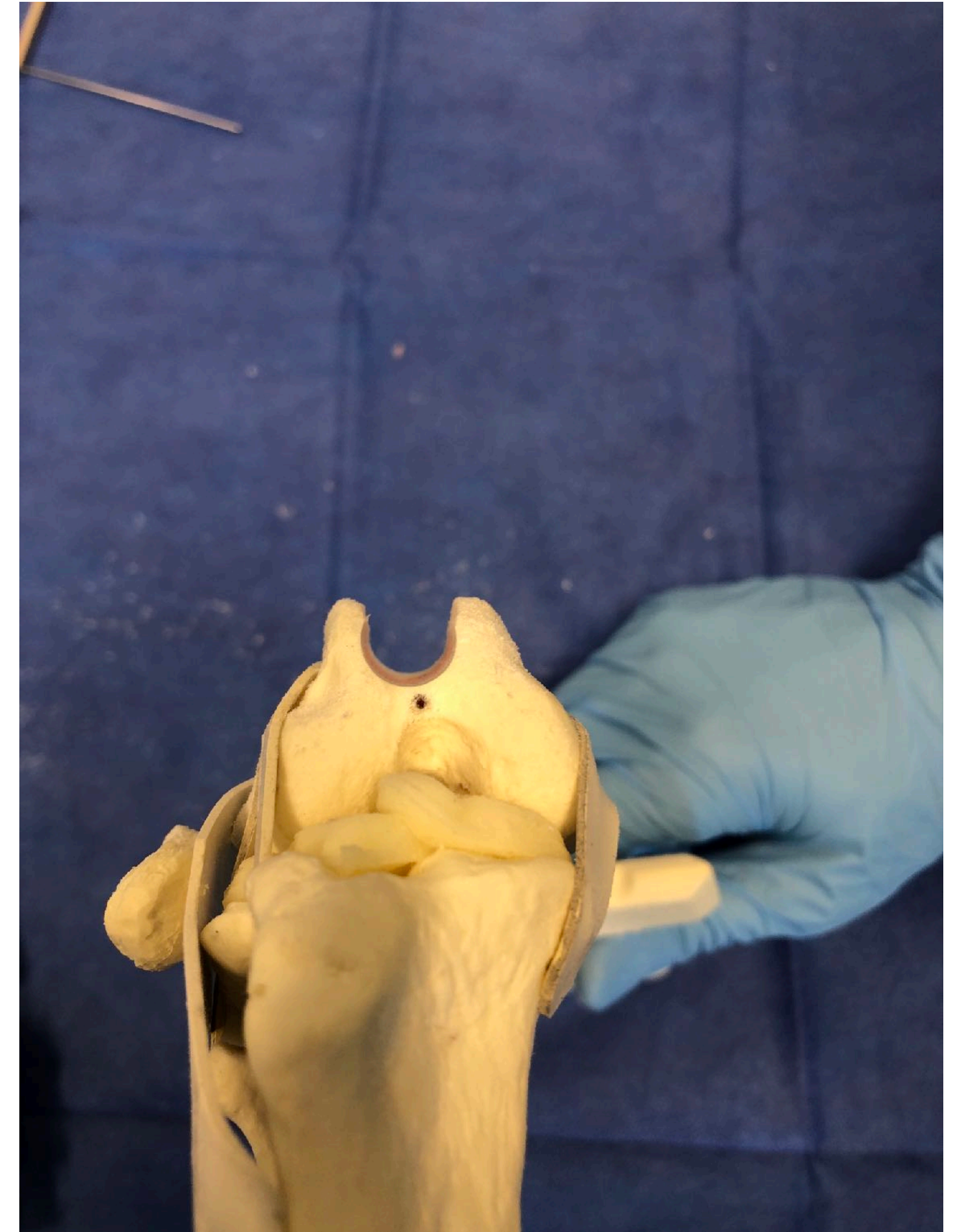
SCRT

The saw guide is repositioned with the top hole over the K-wire. In this case deepening the groove 3 mm (actually 3.5 mm due to the thickness of the blade).



SCRT

The K-wire is removed.



SCRT

Press the graft into place.

