

Public Water System Annual Report

Southwest Regional Water Treatment Plant & Southwest Regional Water Co-op
2025

Contact persons: Brock Bolton, Co-op Manager, and Chief Operator

Phone Numbers:

Water Plant: 204-522-3463

Emergencies: 204-522-6553

Office Numbers:

Town of Melita Office: 204-522-3413

RM of Two Borders

Melita Office: 204-522-3263

RM of Brenda-Waskada

Office: 204-673-2401

Email: waterplant@swrwc.ca Water Treatment Plant

Website: swrwc.ca

Date Prepared: 3/11/2026

Prepared by: Brock Bolton

This document has been reviewed by the Office of Drinking Water and deemed accurate.

Table of Contents

Introduction:.....3

1. Description of the Water System.....3

1.1. Water Supply Source4

1.2. Water Treatment Process5

1.3. Distribution System6

1.4. Storage Reservoir7

1.5. Number of Connections, Population Served and types of Water Users.....8

1.6. Classification and Certification8

1.7. Hydrological Investigations8

1.8. Artificial Recharge9

1.9. Groundwater Levels and Monitoring.....11

2. Water Testing12

2.1. Bacterial Testing12

2.2. Disinfection.....13

2.3. Type of Disinfection Used13

2.4. Equipment Redundancy and Monitoring Requirements14

2.5. Turbidity Testing.....16

2.6. Other Testing Performed at the WTP17

2.7. Plant Operation18

2.8. Chemicals Added to our Water and Why19

3. Disinfectant Residual, Turbidity, Bacteria, and Overall Performance Results19

3.1. List of Water Quality Standards.....19

4. Water System Incidents and Corrective Actions19

5. Additional Records Required19

6. Drinking Water Safety Orders and Actions Taken in Response.....19

7. Boil Water Advisories Issued and Actions Taken in Response.....19

8. Warnings Issued/Charges Laid in Accordance with the Drinking Water Safety Act20

9. Major Expenses Incurred20

10. Future System Expansion and/or Increased Production20

11. Water Production/Usage for 202520

Appendix “A” – Usage Charts.....21

Table 1: Water Quality/Treatment Standards.....23

Appendix “B” – General Chemistry Results 2025.....25

Introduction:

The 2025 Annual Report for the Melita Water Treatment Plant and South West Regional Water Co-op summarizes the water utility's ability to produce safe potable water and meet or exceed provincial regulations. We hope that the following report answers any and all questions regarding the water system. It is our belief that the public has a right to access information related to the drinking water they consume. To that end the following report has been prepared for the residents who are users of the system.

1. Description of the Water System

The Southwest Regional Water Co-op Public Water System (PWS) provides safe potable drinking water to the residents of Melita, Two Borders, Brenda, Napinka, Medora and Waskada through the distribution systems and to other rural residents by means of the Truck Fill System at the Water Treatment Plant (WTP). Treated water produced from the WTP meets or exceeds all health and aesthetic objectives as stated in the *Guidelines for Canadian Drinking Water Quality*.

The Melita Water Treatment Plant



1.1. Water Supply Source

The WTP receives groundwater from four wells located at 16 km North East of Melita @ NW23-5-27W. The wells draw groundwater from the Oak Lake Aquifer. The wells were drilled to a depth of 33 feet. Raw water pumped from the wells into a 200 mm (8 inch) pipeline where it flows directly into the WTP for processing and treatment.



Well Site 1

During 2007-2008, the Town of Melita developed a new Public Water System (PWS) which includes two groundwater wells, a Water Treatment Plant (WTP) in NW6-4-26W, and a raw water pipeline between the wells and the WTP. During the initial 6 months of operation, it was determined the water supply wells have insufficient capacity due to the presence of impervious clay ridges which were not detected during the initial groundwater sourcing study. As a result, a new well field was developed on municipal right-of-way between SE24-5-27W and SW19-5-26W which is located 3.2kms east of the existing wells. This well field consists of two 760 mm (30 inch) wells, however, only the north well was mechanised and connected to the raw water supply line. This site will not be operational until spring 2010.

As water flows through the ground it dissolves metals and minerals. In the case of the Melita water supply, the water has come into contact with primarily iron and manganese. Iron does

not pose health concerns, rather it is known as aesthetic water quality parameter. Manganese is now an aesthetic and health concern being closely monitored and the standards have been lowered. On September 23, 2010, the new well field was brought online. On December 16, 2010, it was decided to test the water coming from the new well field for Iron Bacteria due to production issues at the WTP. The tests came back positive, and the decision was made to stop pumping and bring the original well field back online. The original well site was brought back online in early 2011 after it was swabbed and flushed to remove any iron bacteria from the raw water supply line to prevent contamination of the original well site. A plan is in place to treat the new well site and hopefully clear it of iron bacteria. At no time did iron bacteria enter the reservoir or any part of the distribution system. In the fall of 2017 two new wells were drilled at the East site replacing the one's that didn't work before, and a booster station was built halfway between the east well field and the WTP so that both RO units can be operated together.

1.2. Water Treatment Process

Raw water is pumped to the WTP where approximately 90% of the flow is directed through reverse osmosis membranes. The remaining 10% by-passes through a sand-filter with 3 new UV (ultraviolet) units prior to blending with membrane permeate. Blended flow is chlorinated with sodium hypochlorite and then stored in a 1,000,000-litre concrete reservoir for distribution. Since membranes remove most dissolved minerals, blending permeate with filter water allows the operation to produce treated water with a more desirable hardness and PH. Approximately 13% of membrane flow (11% of the raw water) is discharged as membrane concentrate to the Souris River. Treated water is distributed to the Co-op and a bulk water (truck) fill is available for rural usage. In the spring of 2014, the second RO unit and filter came online doubling the production capacity of the plant.

Truck Fill





The South RO (original unit)



The North RO (new)



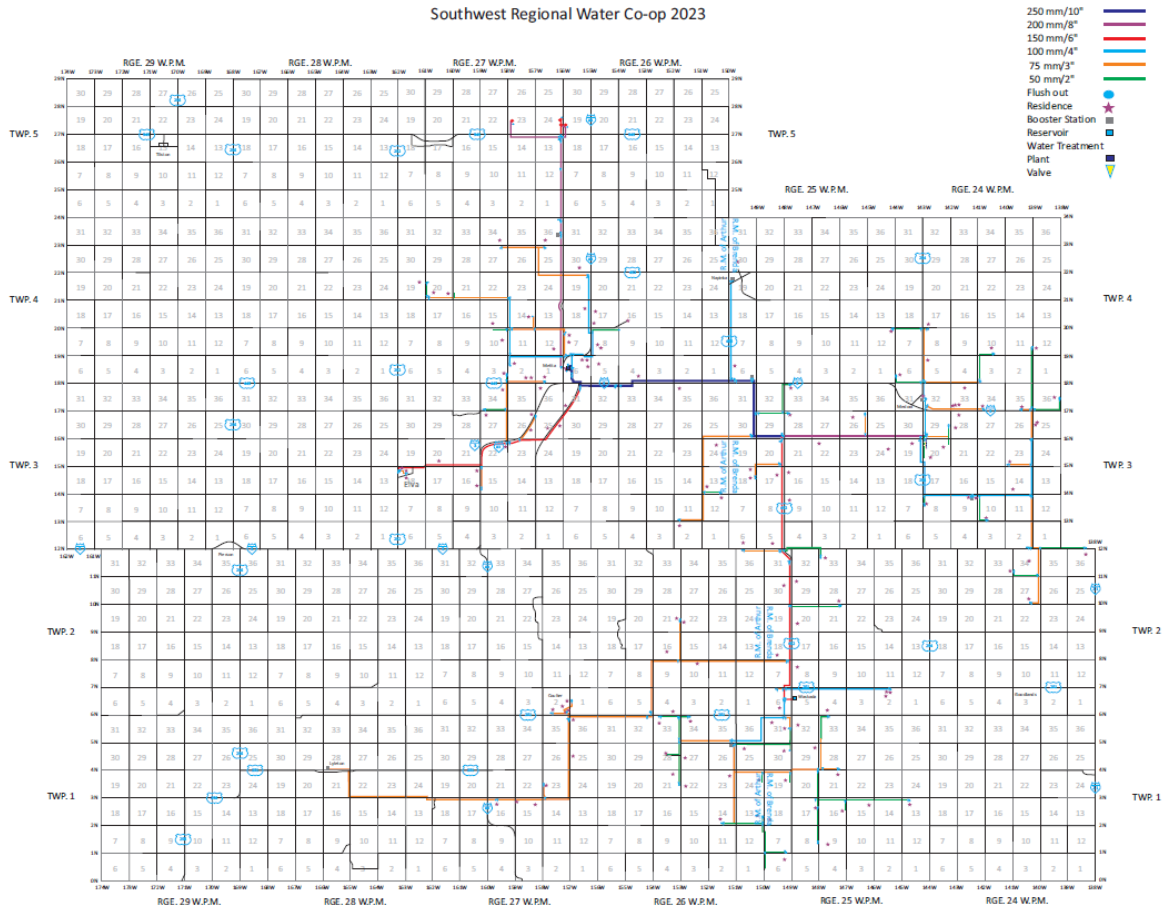
The Original Sand Filter with UV upgrade



The New Sand Filter with UV

1.3. Distribution System

Treated water from the reservoir, located underneath the WTP, is pumped throughout the Melita distribution system via two 7.5 horsepower duty pumps, with one 30 horsepower emergency standby pump for firefighting purposes. The SWRWC has one 7.5 horsepower duty pump and a new 2 horsepower jockey pump which was installed in the spring of 2017 to supply the rural side of the system. The SWRWC distribution system consists primarily of High-Density Polyethylene Pipe. In 2017 the rural system was expanded to take in another 71 homes and another 150 km of pipe was installed, the raw, 10" and 8" didn't increase but the rest did. 12 miles of 8" raw water supply line, the distribution consists of the following 11 miles of 10", 5 miles of 8", 19 miles of 6", 30 miles of 4", 68 miles of 3", 49 miles of 2", for a total of 182 miles of pipe in the ground. A map of the distribution system is on the next page. The Waskada Rural Water Co-op already had several miles of pipe in place but is now part of the overall distribution system. The WTP also has a natural gas-powered generator located in the building that powers the distribution pumps during times of a power failure.



The Distribution Pumps



The Generator

1.4. Storage Reservoir

The storage reservoir for the Co-op’s drinking water has a capacity of 1,000,000 litres or 220,000 Imperial Gallons, which gives us an available storage time of 2 days without plant operation. Currently the plant runs daily keeping the reservoir full, the main reason for this is

to have enough water on hand for firefighting and domestic use. It also helps to keep the water fresh and well circulated. Since the addition of the second RO and Filter the plant runs one RO and Filter on an alternating basis. After the 2017 expansion we now run both RO's and filters simultaneously.

1.5. Number of Connections, Population Served and types of Water Users

The Melita distribution system is comprised of 592 service connections, with a population of 1056 (2006 Statistics Canada Census) approximately. The distribution system also services a few rural connections located directly around town in the RM of Two Borders.

In June of 2010 Phase 1 of the Rural Pipeline began construction and the South West Regional Water Co-op was formed which includes to date the Town of Melita, R.M. of Two Borders, R.M. of Brenda, Village of Waskada and the Waskada Rural Water Co-op.

In phase 1; Two Borders has 14 rural service connections; Brenda has 74 service connections 12 are rural connections 38 in Napinka and 24 in Medora. Connections to the Southeast of Melita were completed and came online in June, serving Brenda, Napinka, Medora and additional connections in Two Borders, completing phase 1 of the co-op pipeline. Waskada, the existing Waskada Rural Water Co-op and additional connections in Two Borders and Brenda came online in January 2012, when phase 2 was completed. Phase 3 was completed in the late fall of 2017 adding another 71 connections to the system, 38 in Two Borders and 33 in Brenda-Waskada. Lyleton expansion started in fall 2021 and because of weather delays, wet conditions and sabotage to the pipe it won't be complete until spring 2023.

1.6. Classification and Certification

- The Melita WTP is classified as a Class 2 Water Treatment Facility. Classification and certification is done through the *Water and Wastewater Facility Operators Regulation* under the *Environment Act*.
- Certification Level of Operators.
 - Brock Bolton, Level 2
 - Rob McCutcheon, Level 2.
 - Randy Loucks, OIT. New operator in training,

1.7. Hydrological Investigations

In 2005, KGS Group conducted a groundwater sourcing study near the Broomhill truck loader station approximately 16 km north of Melita. The objective of the study was to carry out exploratory drilling and installation of a production well with sufficient capacity for the Town's water supply. KGS Group conducted an EM34 survey and drilled approximately 20 test-holes and installed 15 monitoring wells. A 96.5-hour pump test at a constant 15 L/s pump rate was completed and drawdown was monitored. In October 2005, a 200 mm (8 inch) production well was installed on the NW23-5-27W on the Broomhill Wildlife Management Area (WMA). The water level was recorded to be 1.8 meters below ground at the time of drilling. A second

production well was installed 15 meters south of the first in 2007 so that one well could act as a backup supply.

After commissioning the WTP in 2009, a monitoring well system was installed which showed a significant water table drop over the first 6 months of operation. Subsequent test drilling by KGS Group showed that the aquifer was not continuous as originally determined from the 2005 investigations. Newer test drilling at close intervals showed the presence of clay ridges that separated the larger aquifer into smaller basins. It was determined that these clay ridges result in an “egg carton” or “ice cube tray” effect such that once the water table dropped below the top of the ridges, the production wells, which are located into a much smaller basin, are unable to sustain withdrawals necessary to sustain Melita.

1.8. Artificial Recharge

Test drilling activities in 2009 revealed at least three separate basins in close proximity to the well field. The basins are referred to as the south, middle, and north basins whereby the production wells are located in the south basin. In addition, the Broomhill truck loader station is also located in the south basin. Due to the water table drop, the pump in the truck fill had to be lowered to maintain its operation. Recharge infrastructure include a 760 mm (30 inch) well was installed in both the middle and north basin. A 75-mm pipeline was installed from the middle basin well to the south production well. This would allow groundwater from the middle basin to be pumped to the production well site and artificially recharge the south basin. However, due to Manitoba Hydro power restrictions, this well can only be pumped while the production well is not in operation. The WTP generally requires water for about 13 hours a day on average for 2012, such that the middle basin is pumping only when needed. When recharging is required the pump is turned on and runs continually until water levels are back up to an acceptable level and then turned off until needed. Pumping groundwater from the middle basin to the south basin commenced on August 26th, 2009, on an as needed basis and wasn't used in 2010 and since then only as needed.

Since the middle basin could only be pumped intermittently, the north basin well was temporarily equipped with a pump, generator, and overland pipeline to speed up the water table recovery. Pumping from this basin occurred from September 3rd to September 21st until water levels significantly recovered and the north basin water table prevented further pumping. The water table in the north basin has since recovered. In 2012 the north basin was converted to a supplemental well to improve operating pressures and flows to the plant when it is in operation.

Currently, the middle basin well is intermittently pumped to the production well site in an attempt to maintain water levels until the new well field located on the SE24-5-27W can be put into operation. KGS Group determined that pumping from all three basins will not be sustainable to meet Melita demands and recommended developing the new well site. At this point the new east well field is still not in operation as all attempts to remove the iron bacteria from it have failed. More testing and engineering have come up with a plan to drill two new

smaller diameter wells in the same location, that will meet future demands and allow the operation of both RO units at the same time. At the end of 2017 two new wells were drilled, and they began operating March 2018.

The updated graph on page 11 shows ground water levels at various points at and around the new wells.

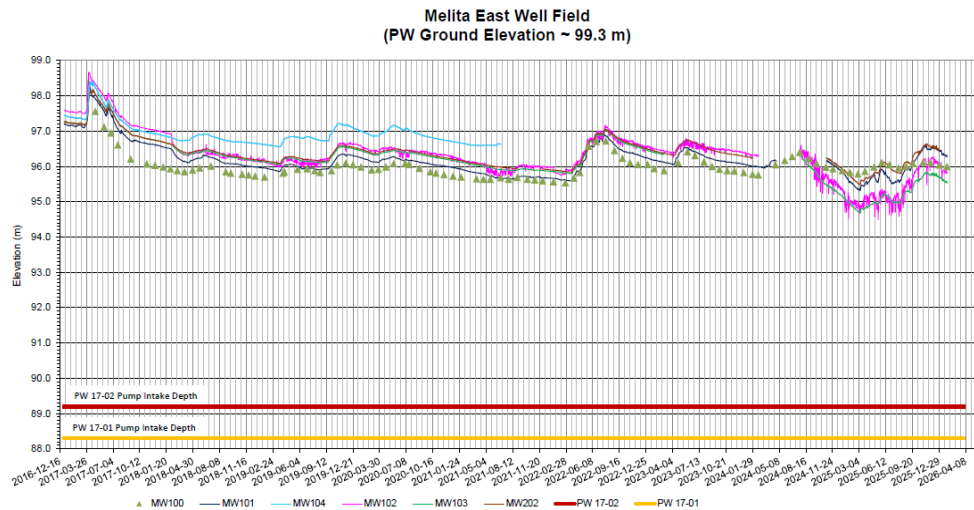


Recharge Wells

Since fall of 2017 we have not had to recharge the east site because we stopped pulling water from these wells and now only pull from the new ones at the East site.

1.9. Groundwater Levels and Monitoring

Groundwater monitoring commenced in July 2009. As many as four pressure transducers were initially set-up and currently three pressure transducers are continuous and manual readings. This graph uses a benchmark of 100.00 m in order to compare levels in each the three basins.



In 2007, the Manitoba Water Services Board (MWSB) developed a groundwater monitoring plan for the existing well field (site 1) as required in Environment Act License No. 2745 issued to the Town of Melita. On October 5, 2009, MWSB requested a minor alteration to this license to include the new well field (site 2) located on the SE24-5-27W. As a result, Manitoba Conservation requires a revised water level monitoring plan.

Once operational, site 2 will become the main supply for the SWRWC. Site 1 will remain as a backup supply. Therefore, the groundwater monitoring plan will include monitoring of both sites. The following groundwater monitoring plan is proposed for a period of two years commencing site 2 operation. After two years, the location and frequency of groundwater monitoring is proposed to be re-evaluated.

Site 1 – NW23-5-27W

In 2009, three new monitoring wells were installed at site 1. A 125-mm monitoring well (MW-21) was installed 15 m east of the production wells in the south basin, a 50-mm monitoring well (MW-22) located 110 m north of the north production well in the middle basin, and a 50 mm monitoring well (MW-23) located 245 m north of the north production well in the north basin.

All three monitoring wells were equipped with pressure transducers. However, it is proposed to maintain two pressure transducers at MW-21 and MW-22 for continuous monitoring. A manual water level reading with an electronic tape is proposed semi-annually at MW-10, MW-23 and MW-14. The monitoring of these wells will provide water level data on each of the three basins as well as MW-14 located outside of the basins.

Site 2 – SE24-5-27W

The proposed monitoring system for site 2 will include pressure transducers installed in MW-103 near the proposed production well and in MW-104 located adjacent to the Harmon farmstead. Manual level readings are proposed semi-annually at MW-100, MW-101 and MW-102. MW-100 is located near the Miner and Carr properties. Each monitoring well is protected with a locked steel cover. However, at each monitoring well location, a second 50 mm monitoring well (without steel cover and lock) was provided for public observations.

2. Water Testing

Water tests are taken daily on a routine basis to ensure that the water is safe and to monitor how well the treatment process is performing. We test the water at the WTP and in the distribution system. We perform daily tests at the WTP on 6 different aspects of the treatment process.

- Distribution Tests (*water taken from a point in the distribution system*) on average 6 tests per day.
- Treated Tap (*water taken from a point in the WTP before it leaves the plant*) on average 6 tests per day.
- Raw (*untreated well water as it enters the WTP*) on average 5 tests per day.
- Permeate (*water from the R.O. Unit before chemical addition*) on average 3 tests per day.
- Sand-filter (*treated water from the sand-filter, before it blends with R.O. water*) 7 tests per day, 5 when chlorine isn't used as a pre-treatment.
- MTU or Main Treatment Unit (*water from all 12 vessels and 4 stages on MTU#2 and 11 vessels and 3 stages on MTU#1*) 30 tests per day for conductivity.
- Chlorine we test chlorine daily at 3 locations in the plant (post treatment) before it enters the distribution system. We also test 1 location in Melita and 4 more rurally on a daily basis.

There are on average 57 tests performed a day at the WTP and another 8 rurally, or 1,977 tests a month, 23,725 tests a year.

2.1. Bacterial Testing

We sample the raw water (untreated well water), the treated water (water leaving the treatment plant) and the water in 4 locations in the distribution system one from a location in the RM of Two Borders, another from a location in the RM of Brenda-Waskada and one each from the outgoing waters at the Napinka and Waskada reservoirs every two weeks (bi-weekly) for the presence of Total Coli forms (TC) and E. Coli (EC) bacteria. If these bacteria are present in the water, it is an indication that disease causing organisms may also be present. Since the

completion of phase 2 WTP staff now collects 6 samples instead of the 10 samples previously. New licences were issued in 2012 and now Melita, Brenda (Napinka and Medora) and Waskada have to do their own sampling for their distribution systems. These 6 samples are then sent via courier to a provincially sanctioned lab in Winnipeg for testing. For 2025 all samples sent for testing passed.

2025 Results Total Coliform Bi-weekly Sampling		
Sample	Samples Submitted	Sample Results
Raw	26/26, 100% compliant	All samples tested passed
Treated	26/26, 100% compliant	All samples tested passed
Two Borders @	26/26, 100% compliant	All samples tested passed
Outgoing Napinka	26/26, 100% compliant	All samples tested passed
Outgoing Waskada	26/26, 100% compliant	All samples tested passed
Brenda-Waskada@	26/26, 100% compliant	All samples tested passed

2025 Results E. Coli Bi-weekly Sampling		
Sample	Samples Submitted	Sample Results
Raw	26/26, 100% compliant	All samples tested passed
Treated	26/26, 100% compliant	All samples tested passed
Two Borders @	26/26, 100% compliant	All samples tested passed
Outgoing Napinka	26/26, 100% compliant	All samples tested passed
Outgoing Waskada	26/26, 100% compliant	All samples tested passed
Brenda-Waskada@	26/26, 100% compliant	All samples tested passed

2.2. Disinfection

The final step in the treatment of safe water is disinfection. Disinfection is the selective destruction or inactivation of potential disease-causing organisms in water. Per the *Drinking Water Safety Act* the Melita PWS must ensure that a disinfection residual of at least:

- 0.5 mg/L of free chlorine per litre of water is detectable at the point where water enters the distribution system, after a minimum contact time of 20 minutes. Chlorine analyzer recorded 3,153,600 readings for 2025 and all were above the standard.
- 0.1 mg/L of free chlorine per litre of water is detectable at all times at any point in the distribution network. 1 sample taken daily at 3 different locations in the distribution system all were above the standard.
- 95% of water produced through the filters per month is disinfected within validated UV conditions. Which is monitored by the SCADA and verified daily by us which is a crucial part of the 3-log removal for the filter system.

For 2025 all samples tested met the above standards.

2.3. Type of Disinfection Used

The Melita WTP disinfects by adding a 12% sodium hypochlorite solution to the water via 4 chlorinator pumps. One for the raw water before it enters each sand-filter (pre-treatment) and

two for the blended water before it enters the reservoir. In 2012 three UV units were added after the filter. In 2014 three more UV units were added after the second filter. Log reduction relates to the percentage of microorganisms physically removed or inactivated by a given process.

- 1-log reduction = 90%
- 2-log reduction = 99%
- 3-log reduction = 99.9%
- 4-log reduction = 99.99%

2.4. Equipment Redundancy and Monitoring Requirements

As required by the *Drinking Water Safety Act* the Melita PWS ensures continuous disinfection is maintained at the WTP by keeping in stock all spare parts required for the chlorinators, as well there are two spare chlorinator pumps kept at the plant. Disinfection residuals are monitored continuously by an online monitor that monitors the water continuously as it leaves the WTP. We also monitor the residuals daily at the WTP and in the distribution system; these tests are performed at the WTP after the samples are collected. The results of all tests are recorded on our records at the WTP as well as Monthly Chlorination and UV Report forms which are sent to the regional *Drinking Water Officer* at the end of each month, to check for standard compliance.



Online Turbidity Monitoring Equipment

2025 Monitoring Requirement Results		
Parameter	Monitoring Requirement	Results
Free Chlorine (treated water)	Continuous sampling of water entering the distribution system following at least 20 minutes of contact time at the Melita WTP.	100% compliant
Free Chlorine (treated water)	A confirmatory sample to be taken daily at the online chlorine analyzer sampling or effluent point.	365/365, 100% compliant
Free Chlorine (distribution system)	One sample per day of water leaving the Napinka Reservoir	365/365, 100% compliant
Free Chlorine (distribution system)	One sample per day entering Medora	365/365, 100% compliant
Free Chlorine (distribution system)	One sample per day of water leaving the Waskada Reservoir	365/365, 100% compliant
Free Chlorine (distribution system)	One sample per day of water leaving the Lyleton Reservoir	365/365, 100% compliant
Total Chlorine (treated water)	One sample per day of water entering the distribution system following at least 20 minutes of contact time at the Melita WTP.	365/365, 100% compliant
Total Chlorine (distribution system)	One sample per day of water leaving the Napinka Reservoir	365/365, 100% compliant
Total Chlorine (distribution system)	One sample per day entering Medora	365/365, 100% compliant
Total Chlorine (distribution system)	One sample per day of water leaving the Waskada Reservoir	365/365, 100% compliant
Total Chlorine (distribution system)	One sample per day of water leaving the Lyleton Reservoir	365/365, 100% compliant
Ultraviolet Disinfection	Continuous monitoring of UV intensity level for each operating unit # 1	100% compliant
Ultraviolet Disinfection	Continuous monitoring of UV intensity level for each operating unit # 2	100% compliant
Ultraviolet Disinfection	Continuous monitoring of UV intensity level for each operating unit # 3	100% compliant
Ultraviolet Disinfection	Continuous monitoring of UV intensity level for each operating unit # 4	100% compliant
Ultraviolet Disinfection	Continuous monitoring of UV intensity level for each operating unit # 5	100% compliant
Ultraviolet Disinfection	Continuous monitoring of UV intensity level for each operating unit # 6	100% compliant

2.5. Turbidity Testing

Turbidity is a measurement of the clarity of water. We use turbidity as another means to tell us how well our treatment system is working and to remove particles and other contaminants that can cause the water to look cloudy and affect our disinfection process. Turbidity is tested daily, the raw, treated, sand-filters and distribution by a portable testing meter. The water from the sand-filters and from the MTUs is monitored continuously while the plant is in operation, by two separate online turbidity monitors. The results of all turbidity tests are recorded on our records at the WTP as well as Monthly Turbidity Report forms which are sent to the regional *Drinking Water Officer* at the end of each month to check for standard compliance. For 2025 all samples met the turbidity standards.

2025 Turbidity Monitoring Results		
Parameter	Monitoring Requirement	Results
Turbidity	One raw water sample per day	365/365, 100% compliant
Turbidity	Continuous sampling of the effluent from each operating membrane filtration unit # 1	100% compliant
Turbidity	Continuous sampling of the effluent from each operating membrane filtration unit # 2	100% compliant
Turbidity	A confirmatory sample to be taken daily at the online turbidity analyzer sampling or effluent point unit # 1	365/365, 100% compliant
Turbidity	A confirmatory sample to be taken daily at the online turbidity analyzer sampling or effluent point unit # 2	365/365, 100% compliant
Turbidity (distribution system)	At the same time and locations as bacteriological distribution system sampling	
Sample	Samples Submitted	Sample Results
Raw	26/26, 100% compliant	All samples tested passed
Treated	26/26, 100% compliant	All samples tested passed
Two Borders @	26/26, 100% compliant	All samples tested passed
Outgoing Napinka	26/26, 100% compliant	All samples tested passed
Outgoing Waskada	26/26, 100% compliant	All samples tested passed
Brenda-Waskada@	26/26, 100% compliant	All samples tested passed

2.6. Other Testing Performed at the WTP

- Iron Testing: Is performed daily on the following samples, distribution, treated tap, sand-filter. Every 11 days on the raw and every 11 days on permeate.
- Manganese Testing: Is performed daily on the following samples, sand-filters, raw and every 11 days on the distribution, treated tap, and permeate.
- PH Testing: Is performed daily on the following samples, treated tap, raw, permeate and concentrate.
- Hardness Testing: Is performed every 11 days on the following samples, distribution, treated tap, permeate and raw.
- Chlorine Testing: Is performed daily on the following samples, distribution, and treated tap and sand-filter. As previously described in sections 2.2 and 2.3.
- Conductivity Testing: Is performed daily on the following samples, permeate, distribution, treated tap, raw, sand-filter and all 23 vessels on both RO units.

The MAC (Maximum Acceptable Concentration) for manganese has changed from none to 0.12 mg/L which only slightly affected our daily tests as we were already doing those tests. Metals in the water have become a national concern, with manganese and lead being the primary focus. So quarterly samples are being done at multiple locations throughout the system and sent into the lab for analysis. This started in August so there are no results for the first and second quarters, also the Raw and treated are only done annually.

2025 Metals Monitoring Requirement Results					
Location	Parameter	1 st Quarter	2 nd Quarter	3 rd Quarter	4 th Quarter
Raw	Manganese		0.270		
	Lead		<0.000050		
Treated	Manganese		0.00451		
	Lead		0.000196		
White Owl	Manganese				
Napinka Booster	Manganese	0.00156	0.00156	0.00151	0.00163
Medora Booster	Manganese				
Waskada	Manganese	0.00122	0.00101		0.00181
Lyleton	Manganese			0.00135	
Manganese	Less than or equal to 0.12 mg/L in the water distribution system				
Lead	Less than or equal to 0.005 mg/L in the water distribution system				

2025 Disinfection by-products testing					
Location	Parameter	1 st Quarter	2 nd Quarter	3 rd Quarter	4 th Quarter
White Owl	THM's				
Napinka Booster	HAA's				
Medora	THM's				
Lyleton	THM's			0.0074	
THM's	Less than or equal to 0.1 mg/L in the water distribution system				
HAA's	Less than or equal to 80 ug/L in the water distribution system				

2.7. Plant Operation

The WTP is monitored continuously by the computer system; it is continuously taking readings from 85 different locations by sensors, probes, and meters. This information is displayed in real-time on a different number of screens (see Figure A, B, C which show three different computer screens) and is also recorded and compiled in the form of a trend. These trends can be accessed at any time and show a history of plant operation in various areas (see Figure D for an example of a trend screen).

Figure A

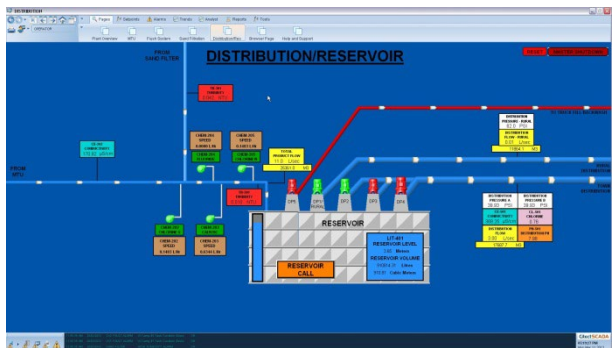
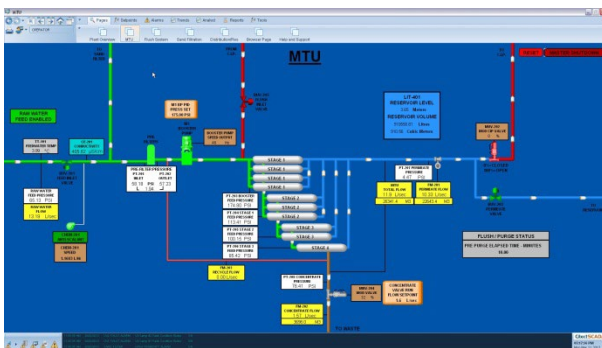


Figure B

Figure C

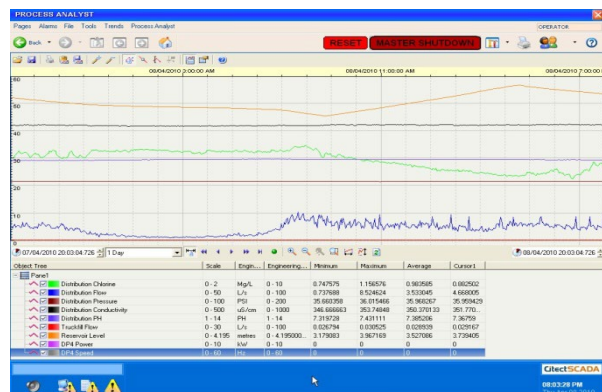
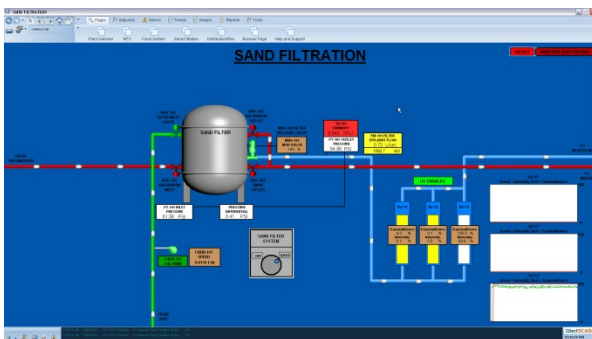


Figure D

2.8. Chemicals Added to our Water and Why

- Sodium Hypochlorite 12%: (Chlorine) Disinfectant, source of available chlorine.
- Avista Vitec 4000: (Antiscalant) Injected in the raw water before the membranes to protect them and aid in the treatment process.
- Sodium Hydroxide 50%: (Caustic Soda) Acid neutralization raises PH.

3. Disinfectant Residual, Turbidity, Bacteria, and Overall Performance Results

For 2025, the SWRWC PWS has met all regulatory requirements in regard to monitoring and reporting in the WTP, and in the distribution system.

3.1. List of Water Quality Standards

The province of Manitoba has adopted several water quality standards from the *Guidelines for Canadian Drinking Water Quality* developed by Health Canada and two regulations under the *Drinking Water Safety Act*.

4. Water System Incidents and Corrective Actions

21-Jul-2025 Chlorine Residual at analyzer, improper use of hydrant at new daycare in Melita.

1-Aug-2025 Permeate Turbidity RO#2, spiked at startup, self corrected.

8-Aug-2025 Permeate turbidity RO#2, spiked at shutdown.

21-Oct-2025 Chlorine Residual and Loss of Pressure, watermain break in Melita.

25-Nov-2025 Chlorine Residual, annual calibration and maintenance mishap.

5. Additional Records Required

As of August 2012, fluoride is no longer added to the water.

Daily Log Sheets are also kept to check plant performance, copies of these forms are sent into the Water Services Board for review.

Distribution Flows and Pressures Data Sheets are also kept to keep an eye on flows and pressures of the water leaving the reservoir.

Conductivity Sheets are also kept to check plant performance, copies are also sent into the Water Services Board for review.

Pressures and Flows are also recorded at 4 locations on the rural pipeline (Napinka Reservoir, the Napinka Booster Station, Medora, Medora Booster Station and Waskada Reservoir).

6. Drinking Water Safety Orders and Actions Taken in Response

In 2025, no drinking water safety orders were issued for the SWRWC PWS.

7. Boil Water Advisories Issued and Actions Taken in Response

In 2025, no boil water advisories were issued for the SWRWC.

8. Warnings Issued/Charges Laid in Accordance with the Drinking Water Safety Act

In 2025, no warnings were issued, or charges laid for the SWRWC PWS.

9. Major Expenses Incurred

Replaced 3 UV units.

10. Future System Expansion and/or Increased Production

Funding was secured late in 2021 to expand the pipeline to Lyleton, the project is to be completed late spring 2023. This work received approval by Office of Drinking Water under permit # PWS-21-P52. Lyleton was finished in March 2023.

11. Water Production/Usage for 2025

The treatment system capacity was designed to meet a 20-year future demand for Melita as well as additional capacity for the rural water system. The water system production and usage are summarized in the following charts in **Appendix "A" – Usage Charts**.

Appendix "A" – Usage Charts

Raw

Total Gals	Highest Day	Lowest Day	Daily Average
54,851,755	323,568	0	150,279

Melita

Total Gals	Highest Day	Lowest Day	Daily Average
22,860,136	123,568	41,630	62,631

Melita Truck Fill

Total Gals	Highest Day	Lowest Day	Daily Average
398,460	12,115	0	1,092

Napinka

Total Gals	Highest Day	Lowest Day	Daily Average
933,464	5,507	1,542	2,557

Napinka Truck Fill

Total Gals	Highest Day	Lowest Day	Daily Average
68,191	2,863	0	187

Medora

Total Gals	Highest Day	Lowest Day	Daily Average
695,158	5,727	661	1,905

Waskada

Total Gals	Highest Day	Lowest Day	Daily Average
3,759,690	19,383	5,286	10,301

Waskada Truck Fill

Total Gals	Highest Day	Lowest Day	Daily Average
386,744	6,661	0	1,060

Lyleton

Total Gals	Highest Day	Lowest Day	Daily Average
409,149	4,518	238	1,406

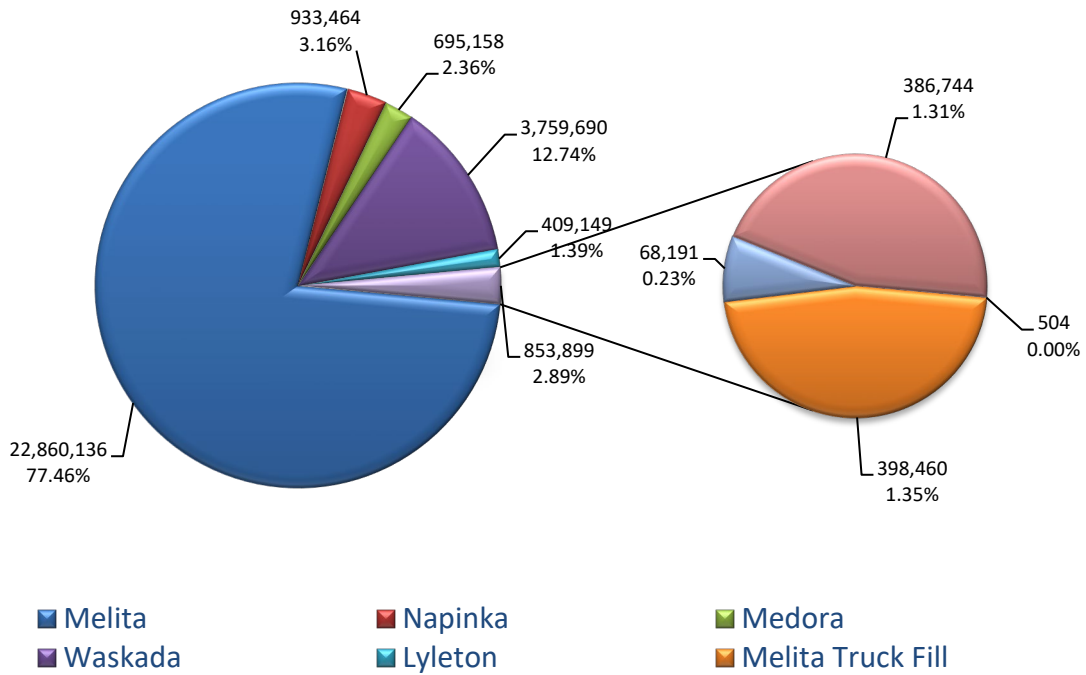
Lyleton Truck Fill

Total Gals	Highest Day	Lowest Day	Daily Average
504	88	0	1

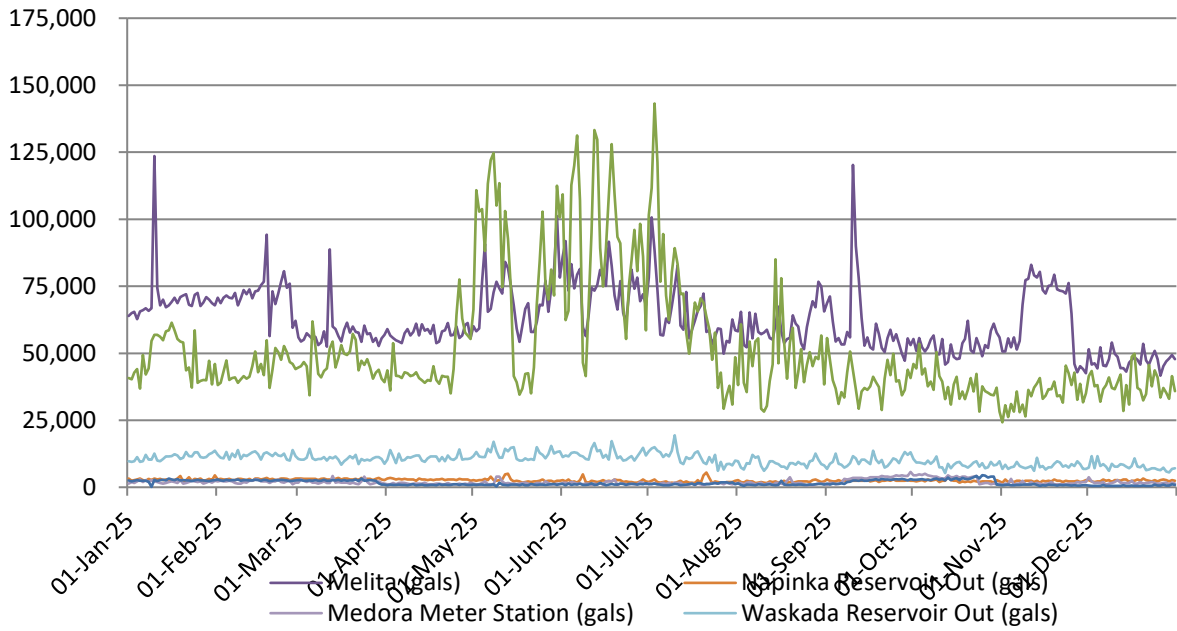
Rural

Total Gals	Highest Day	Lowest Day	Daily Average
13,126,992	108,037	16,502	35,679

2025 Usage Chart in Imperial Gallons



2025 Usage Chart



2025 Truck Fill Usage Chart

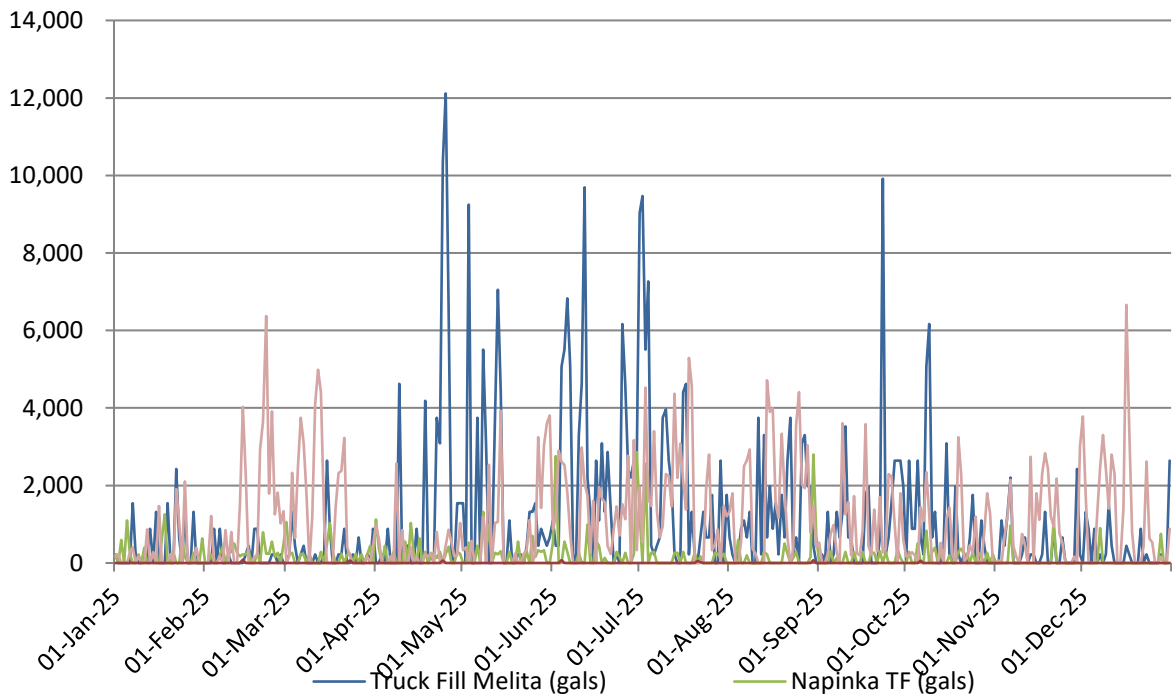


Table 1: Water Quality/Treatment Standards

Parameter	Quality Standard	SWRWC Result
Total Coliform	Less than one total coliform bacteria detectable per 100 mL in all treated and distributed water	100%
E. Coli	Less than one E. Coli bacteria detectable per 100 mL in all treated and distributed water	100%
Chlorine Residual	A free chlorine residual of at least 0.5 mg/L in water entering the distribution system following a minimum contact time of 20 minutes	0.99999%
	A free chlorine residual of at least .01 mg/L at all times at any point in the water distribution system.	100%
Ultraviolet Disinfection	95% of water produced per month is disinfected within validated conditions	100%
Turbidity	Less than or equal to 0.1 NTU in 99% of the measurements in a month of the effluent from each membrane filtration unit	100%
	Not exceeded 0.3 NTU for any continuous measurement	100%
Total Trihalomethanes (THMs)	Less than or equal to 0.10 mg/L of February quarterly sample	N/A
Total Trihalomethanes (THMs)	Less than or equal to 0.10 mg/L of May quarterly sample	N/A
Total Trihalomethanes (THMs)	Less than or equal to 0.10 mg/L of August quarterly sample	N/A
Total Trihalomethanes (THMs)	Less than or equal to 0.10 mg/L of November quarterly sample	N/A
Total Trihalomethanes (THMs)	Less than or equal to 0.10 mg/L as locational annual average of quarterly samples	N/A
Haloacetic Acids (HAAs)	Less than or equal to 80 ug/L of February quarterly sample	<5.00
Haloacetic Acids (HAAs)	Less than or equal to 80 ug/L of May quarterly sample	N/A
Haloacetic Acids (HAAs)	Less than or equal to 80 ug/L of August quarterly sample	N/A
Haloacetic Acids (HAAs)	Less than or equal to 80 ug/L of November quarterly sample	N/A
Haloacetic Acids (HAAs)	Less than or equal to 80ug/L as locational annual average of quarterly samples	N/A
Arsenic	Less than or equal to 0.01 mg/L	0.00029
Benzene	Less than or equal to 0.005 mg/L	<000050
Fluoride	Less than or equal to 1.5 mg/L	0.011
Lead	Less than or equal to 0.005 mg/L in the water distribution system	0.000196
Nitrate	Less than or equal to 45 mg/L measured as nitrate (10 mg/L measured as nitrogen)	0.0831
Trichloroethylene	Less than or equal to 0.005 mg/L	<0.00050
Tetrachloroethylene	Less than or equal to 0.01 mg/L	<0.00050
Uranium	Less than or equal to 0.02 mg/L	0.000819



CERTIFICATE OF ANALYSIS (GUIDELINE EVALUATION)

Work Order : WP2505037
Client : Manitoba Conservation & Climate
Contact : Nnamdi Komlan-Dodoh
Address : 14 Fultz Boulevard
 : Winnipeg Manitoba Canada R3Y 0L6
Telephone : 204-724-0685
Project : Southwest Regional Water Co-op - PWS 205.10
PO : ---
C-O-C number : ---
Sampler : ---
Site : Southwest Regional Water Co-op - PWS 205.10
Quote number : 2025 WTP Chemistry
No. of samples received : 3
No. of samples analysed : 3

Laboratory : ALS Environmental - Winnipeg
Account Manager : Sherzta Rajack-Ahamed
Address : 1329 Niakwa Road East, Unit 12
 : Winnipeg MB Canada R2J 3T4
Telephone : +1 204 255 9720
Date Samples Received : 16-Apr-2025 15:01
Date Analysis Commenced : 16-Apr-2025
Issue Date : 24-Apr-2025 11:55

This report supersedes any previous report(s) with this reference. Results apply to the sample(s) as submitted. This document shall not be reproduced, except in full.

This Certificate of Analysis contains the following information:

- General Comments
- Analytical Results
- Guideline Comparison

Additional information pertinent to this report will be found in the following separate attachments: Quality Control Report, QC Interpretive report to assist with Quality Review and Sample Receipt Notification (SRN).

Signatories

This document has been electronically signed by the authorized signatories below. Electronic signing is conducted in accordance with US FDA 21 CFR Part 11.

Signatories	<i>Position</i>
Lee McTavish	Metals, Winnipeg, Manitoba
Lee McTavish	Inorganics, Winnipeg, Manitoba
Michelle Michalchuk	Organics, Winnipeg, Manitoba
Morgan Bruce	Administration, Winnipeg, Manitoba

Work Order : WP2505037
 Client : Manitoba Conservation & Climate
 Project : Southwest Regional Water Co-op - PWS 205.10



Summary of Guideline Breaches by Sample

SampleID/Client ID	Matrix	Analyte	Analyte Summary	Guideline	Category	Result	Limit
SWRWCOO-OP 1 - Raw Raw	Water	Manganese, total	Based on taste and staining of laundry and plumbing fixtures. Health Basis of MAC: Effects on neurological development and behaviour; deficits in memory, attention, and motor skills. Other: Formula-fed infants (where water containing manganese at levels above the MAC is used to prepare formula) may be especially at risk.	CDWG	AO	270 µg/L	0.02 mg/L
	Water	Manganese, total		CDWG	MAC	270 µg/L	0.12 mg/L

Work Order : WP2505037
 Client : Manitoba Conservation & Climate
 Project : Southwest Regional Water Co-op - PWS 205.10



General Comments

The analytical methods used by ALS are developed using internationally recognized reference methods (where available), such as those published by US EPA, APHA Standard Methods, ASTM, ISO, Environment Canada, BC MOE, and Ontario MOE. Refer to the ALS Quality Control Interpretive report (QC) for applicable references and methodology summaries. Reference methods may incorporate modifications to improve performance.

Where a reported result is higher than the LOR, this may be due to primary sample extract/digestate dilution and/or insufficient sample for analysis.

When the LOR of a reported result differs from standard LOR, this may be due to high moisture content, insufficient sample (reduced weight employed) or matrix interference.

When sampling time information is not provided by the client, sampling dates are shown without a time component. In these instances, the time component has been assumed by the laboratory for processing purposes.

Application of guidelines is provided "as is" without warranty of any kind, either expressed or implied, including, but not limited to fitness for a particular purpose, or non-infringement. ALS assumes no responsibility for errors or omissions in the information. Guidelines are not adjusted for the hardness, pH or temperature of the sample (the most conservative values are used). Measurement uncertainty is not applied to test results prior to comparison with specified criteria values.

Key:

LOR: Limit of Reporting (detection limit)

Unit	Description
-	no units
%	percent
% T/cm	% transmittance per centimetre
AU/cm	absorbance units per centimetre
CU	colour units (1 cu = 1 mg/ pt)
meq/L	milliequivalents per litre
mg/L	milligrams per litre
NTU	nephelometric turbidity units
pH units	pH units
µg/L	micrograms per litre
µS/cm	microsiemens per centimetre

>: greater than.

<: less than.

Red shading is applied where the result or the LOR is greater than the Guideline Upper Limit (or lower than the Guideline Lower Limit, if applicable).

For drinking water samples, Red shading is applied where the result for E.coli, fecal or total coliforms is greater than or equal to the Guideline Upper Limit.

Work Order : WP2505037
 Client : Manitoba Conservation & Climate
 Project : Southwest Regional Water Co-op - PWS 205.10



Analytical Results Evaluation

Matrix: Water

Analyte	CAS Number	Method/Lab	Client sample ID		Client sampling date / time	Sub-Matrix	Unit	SWRWCOO-OP 1 - Raw			SWRWCOO-OP 2 - Treated			SWRWCOO-OP 3 - Distribution @ Napinka Booster					
			Result	Unit				Result	Unit	Result	Unit	Result	Unit						
Field Tests																			
Chlorine, free, field	7782-50-5	EF001/WP	mg/L	----	16-Apr-2025 00:00	Water	----	1.04	mg/L	16-Apr-2025 00:00	Water	----	1.04	mg/L	16-Apr-2025 00:00	Water	----	0.98	mg/L
Chlorine, total, field	7782-50-5	EF001/WP	mg/L	----	16-Apr-2025 00:00	Water	----	1.11	mg/L	16-Apr-2025 00:00	Water	----	1.04	mg/L	16-Apr-2025 00:00	Water	----	1.04	mg/L
Sample Preparation																			
Dissolved carbon filtration location																			
		EP358/WP	-	lab			lab												
Physical Tests																			
Absorbance, UV (@ 254nm)		E404/WP	AU/cm	0.0340			lab												
Alkalinity, bicarbonate (as CaCO3)		E290/WP	mg/L	287			lab												
Alkalinity, carbonate (as CaCO3)		E290/WP	mg/L	<1.0			lab												
Alkalinity, hydroxide (as CaCO3)		E290/WP	mg/L	<1.0			lab												
Alkalinity, total (as CaCO3)		E290/WP	mg/L	287			lab												
Colour, true		E329/WP	CU	<5.0			lab												
Conductivity		E100/WP	µS/cm	672			lab												
Hardness (as CaCO3), from total Ca/Mg		EC100A/WP	mg/L	352			lab												
Langelier index (@ 4°C)		EC105A/WP	-	0.568			lab												
Langelier index (@ 60°C)		EC105A/WP	-	1.35			lab												
pH		E108/WP	pH units	7.93			lab												
Solids, total dissolved [TDS]		E162-L/WP	mg/L	388			lab												
Turbidity		E121/WP	NTU	0.36			lab												



Work Order : WP2505037
 Client : Manitoba Conservation & Climate
 Project : Southwest Regional Water Co-op - PWS 205.10

Analyte	CAS Number	Method/Lab	Client sample ID		Sub-Matrix	Unit	Result	SWRWC00-OP 1 - Raw Raw	SWRWC00-OP 2 - Treated Treated	SWRWC00-OP 3 - Distribution @ Napinka Booster Distribution
			Client sampling date / time	Client sampling date / time						
Physical Tests										
Transmittance, UV (@ 254nm)	---	E404/WP	% T/cm	16-Apr-2025 00:00	Water	92.5	16-Apr-2025 00:00	16-Apr-2025 00:00	16-Apr-2025 00:00	---
Anions and Nutrients										
Ammonia, total (as N)	7664-41-7	E298/WP	mg/L			0.0077		<0.0050		---
Bromide	24959-67-9	E235.Br-L/WP	mg/L			0.054		0.0071		---
Chloride	16887-00-6	E235.Cl-L/WP	mg/L			5.81		2.39		---
Fluoride	16984-48-8	E235.F/WP	mg/L			0.064		0.011		---
Nitrate (as N)	14797-55-8	E235.NO3-L/WP	mg/L			0.299		0.0831		---
Nitrite (as N)	14797-65-0	E235.NO2-L/WP	mg/L			0.0014		<0.0010		---
Sulfate (as SO4)	14808-79-9	E235.SO4/W P	mg/L			81.4		10.8		---
Organic / Inorganic Carbon										
Carbon, dissolved organic [DOC]	---	E358-L/WP	mg/L			2.47		<0.50		---
Carbon, total organic [TOC]	---	E355-L/WP	mg/L			2.34		0.54		---
Ion Balance										
Anion sum	---	EC101A/WP	meq/L			7.62		1.68		---
Carbon sum (total)	---	EC101A/WP	meq/L			7.52		1.78		---
Ion balance (cations/anions)	---	EC101A/WP	%			98.7		106		---
Ion balance (APHA)	---	EC101A/WP	%			-0.680		2.89		---
Total Metals										
Aluminum, total	7429-90-5	E420/WP	µg/L			0.92		1.0		1.2



Work Order : WP2505037
 Client : Manitoba Conservation & Climate
 Project : Southwest Regional Water Co-op - PWS 205.10

Analyte	CAS Number	Method/Lab	Client sample ID		SWRWCOO-OP 1 - Raw Raw	SWRWCOO-OP 2 - Treated Treated	SWRWCOO-OP 3 - Distribution @ Napinka Booster Distribution	Sub-Matrix	Unit	Result	Result	Result
			Client sampling date / time									
			Water	Water								
Total Metals												
Antimony, total	7440-36-0	E420/WP	16-Apr-2025 00:00	16-Apr-2025 00:00	0.097	0.021	0.022	Water	µg/L	0.021	0.022	---
Arsenic, total	7440-38-2	E420/WP	16-Apr-2025 00:00	16-Apr-2025 00:00	0.73	0.29	0.30	Water	µg/L	0.29	0.30	---
Barium, total	7440-39-3	E420/WP	16-Apr-2025 00:00	16-Apr-2025 00:00	103	14.9	17.0	Water	µg/L	14.9	17.0	---
Beryllium, total	7440-41-7	E420/WP	16-Apr-2025 00:00	16-Apr-2025 00:00	0.0013	0.00055	0.00090	Water	µg/L	0.00055	0.00090	---
Bismuth, total	7440-69-9	E420/WP	16-Apr-2025 00:00	16-Apr-2025 00:00	0.00076	Not Detected	Not Detected	Water	µg/L	Not Detected	Not Detected	---
Boron, total	7440-42-8	E420/WP	16-Apr-2025 00:00	16-Apr-2025 00:00	41	31	31	Water	µg/L	31	31	---
Cadmium, total	7440-43-9	E420/WP	16-Apr-2025 00:00	16-Apr-2025 00:00	0.0060	Not Detected	Not Detected	Water	µg/L	Not Detected	Not Detected	---
Calcium, total	7440-70-2	E420/WP	16-Apr-2025 00:00	16-Apr-2025 00:00	78700	12100	13800	Water	µg/L	12100	13800	---
Cesium, total	7440-46-2	E420/WP	16-Apr-2025 00:00	16-Apr-2025 00:00	0.0015	Not Detected	0.0027	Water	µg/L	Not Detected	0.0027	---
Chromium, total	7440-47-3	E420/WP	16-Apr-2025 00:00	16-Apr-2025 00:00	Not Detected	0.080	0.055	Water	µg/L	0.080	0.055	---
Cobalt, total	7440-48-4	E420/WP	16-Apr-2025 00:00	16-Apr-2025 00:00	0.23	Not Detected	Not Detected	Water	µg/L	Not Detected	Not Detected	---
Copper, total	7440-50-8	E420/WP	16-Apr-2025 00:00	16-Apr-2025 00:00	0.36	7.54	8.56	Water	µg/L	7.54	8.56	---
Iron, total	7439-89-6	E420/WP	16-Apr-2025 00:00	16-Apr-2025 00:00	60	1.8	1.5	Water	µg/L	1.8	1.5	---
Lead, total	7439-92-1	E420/WP	16-Apr-2025 00:00	16-Apr-2025 00:00	0.044	0.196	0.981	Water	µg/L	0.196	0.981	---
Lithium, total	7439-93-2	E420/WP	16-Apr-2025 00:00	16-Apr-2025 00:00	16.0	4.5	4.9	Water	µg/L	4.5	4.9	---
Magnesium, total	7439-95-4	E420/WP	16-Apr-2025 00:00	16-Apr-2025 00:00	37800	5600	6470	Water	µg/L	5600	6470	---
Manganese, total	7439-96-5	E420/WP	16-Apr-2025 00:00	16-Apr-2025 00:00	270	4.51	1.21	Water	µg/L	4.51	1.21	---
Molybdenum, total	7439-96-7	E420/WP	16-Apr-2025 00:00	16-Apr-2025 00:00	1.66	0.194	0.240	Water	µg/L	0.194	0.240	---
Nickel, total	7440-02-0	E420/WP	16-Apr-2025 00:00	16-Apr-2025 00:00	1.60	0.22	0.67	Water	µg/L	0.22	0.67	---

Work Order : WP2505037
 Client : Manitoba Conservation & Climate
 Project : Southwest Regional Water Co-op - PWS 205.10



Analyte	CAS Number	Method/Lab	Client sample ID		SWRWCOO-OP 1 - Raw Raw	SWRWCOO-OP 2 - Treated Treated	SWRWCOO-OP 3 - Distribution @ Napinka Booster Distribution	Client sampling date / time	
			Sub-Matrix	Unit				16-Apr-2025 00:00	16-Apr-2025 00:00
			Water	Water				Water	Water
Total Metals					Result	Result	Result	Result	
Phosphorus, total	7723-14-0	E420WP	µg/L		189	11	8.3		
Potassium, total	7440-09-7	E420WP	µg/L		3770	949	1040		
Rubidium, total	7440-17-7	E420WP	µg/L		1.19	0.36	0.36		
Selenium, total	7782-49-2	E420WP	µg/L		0.168	Not Detected	0.054		
Silicon, total	7440-21-3	E420WP	µg/L		11100	1990	2200		
Silver, total	7440-22-4	E420WP	µg/L		Not Detected	0.0016	0.0012		
Sodium, total	7440-23-5	E420WP	µg/L		8560	15900	17100		
Strontium, total	7440-24-6	E420WP	µg/L		168	24.4	28.2		
Sulfur, total	7704-34-9	E420WP	µg/L		29800	3950	4440		
Tellurium, total	13494-80-9	E420WP	µg/L		0.048	Not Detected	Not Detected		
Thallium, total	7440-28-0	E420WP	µg/L		0.0064	0.0014	Not Detected		
Thorium, total	7440-29-1	E420WP	µg/L		Not Detected	Not Detected	Not Detected		
Tin, total	7440-31-5	E420WP	µg/L		0.011	Not Detected	0.017		
Titanium, total	7440-32-6	E420WP	µg/L		0.034	Not Detected	Not Detected		
Tungsten, total	7440-33-7	E420WP	µg/L		Not Detected	Not Detected	Not Detected		
Uranium, total	7440-61-1	E420WP	µg/L		6.04	0.819	0.933		
Vanadium, total	7440-62-2	E420WP	µg/L		0.20	0.12	0.13		
Zinc, total	7440-66-6	E420WP	µg/L		0.44	4.6	8.9		



Work Order : WP2505037
 Client : Manitoba Conservation & Climate
 Project : Southwest Regional Water Co-op - PWS 205.10

Analyte	CAS Number	Method/Lab	Unit	Client sample ID			
				Client sampling date / time			
				SWRWCOO-OP 1 - Raw Raw	SWRWCOO-OP 2 - Treated Treated	SWRWCOO-OP 3 - Distribution @ Napinka Booster Distribution	Result
				16-Apr-2025 00:00	16-Apr-2025 00:00	16-Apr-2025 00:00	Result
				Water	Water	Water	Result
				WP2505037-001	WP2505037-002	WP2505037-003	Result
				Not Detected	Not Detected	Not Detected	Result
				µg/L	µg/L	µg/L	Result
Total Metals							
Zirconium, total	7440-67-7	E420/WP	µg/L	Not Detected	Not Detected	Not Detected	Result
Volatile Organic Compounds							
Benzene	71-43-2	E611DWP	mg/L	<0.00050	---	---	Result
Bromodichloromethane	75-27-4	E611DWP	mg/L	<0.00050	---	---	Result
Bromoform	75-25-2	E611DWP	mg/L	<0.00050	---	---	Result
Chloroform	67-66-3	E611DWP	mg/L	<0.00050	---	---	Result
Dibromochloromethane	124-48-1	E611DWP	mg/L	<0.00050	---	---	Result
Dichloromethane	75-09-2	E611DWP	mg/L	<0.0010	---	---	Result
Ethylbenzene	100-41-4	E611DWP	mg/L	<0.00050	---	---	Result
Methyl-tert-butyl ether [MTBE]	1634-04-4	E611DWP	mg/L	<0.00050	---	---	Result
Tetrachloroethylene	127-18-4	E611DWP	mg/L	<0.00050	---	---	Result
Toluene	108-88-3	E611DWP	mg/L	<0.00050	---	---	Result
Trichloroethane, 1,1,1-	71-55-6	E611DWP	mg/L	<0.00050	---	---	Result
Trichloroethane, 1,1,2-	79-00-5	E611DWP	mg/L	<0.00050	---	---	Result
Trichloroethylene	79-01-6	E611DWP	mg/L	<0.00050	---	---	Result
Xylene, m+p-	179601-23-1	E611DWP	mg/L	<0.00040	---	---	Result
Xylene, o-	95-47-6	E611DWP	mg/L	<0.00030	---	---	Result
Xylenes, total	1330-20-7	E611DWP	mg/L	<0.00050	---	---	Result
BTEX, total	---	E611DWP	mg/L	<0.0010	---	---	Result

Work Order : WP2505037
 Client : Manitoba Conservation & Climate
 Project : Southwest Regional Water Co-op - PWS 205.10



Matrix: Water

Analyte	CAS Number	Method/Lab	Sub-Matrix	Unit	Client sample ID		
					Client sampling date / time	SWRWCOO-OP 1 - Raw Raw	SWRWCOO-OP 2 - Treated Treated
					16-Apr-2025 00:00	16-Apr-2025 00:00	16-Apr-2025 00:00
			Water				
					WP2505037-001	WP2505037-002	WP2505037-003
					Result	Result	Result
Volatile Organic Compounds Surrogates							
Bromofluorobenzene, 4-	460-00-4	E611D/WP		%	113	----	----
Difluorobenzene, 1,4-	540-36-3	E611D/WP		%	110	----	----

Please refer to the General Comments section for an explanation of any result qualifiers detected.