

Public Water System Annual Report

Southwest Regional Water Treatment Plant & Southwest Regional Water Co-op
2015

Contact persons: Brock Bolton, Co-op Manager, and Chief Operator

Phone Numbers:

Water Plant: 204-522-3463

Emergencies: 204-522-6553

Office Numbers:

Town of Melita Office: 204-522-3413

RM of Two Borders

Melita Office: 204-522-3263

RM of Brenda-Waskada

Office: 204-673-2401

Email: melshop@mymts.net Water Treatment Plant

Date Prepared: 3/1/2016

Prepared by: Brock Bolton

Table of Contents

| | |
|---|-----------|
| Introduction: | 3 |
| 1. Description of the Water System | 3 |
| 1.1. Water Supply Source | 4 |
| 1.2. Water Treatment Process | 5 |
| 1.3. Distribution System | 6 |
| 1.4. Storage Reservoir | 7 |
| 1.5. Number of Connections, Population Served and types of Water Users | 8 |
| 1.6. Classification and Certification | 8 |
| 1.7. Hydrological Investigations | 8 |
| 1.8. Artificial Recharge | 9 |
| 1.9. Groundwater Levels and Monitoring | 11 |
| 2. Water Testing | 12 |
| 2.1. Bacterial Testing | 13 |
| 2.2. Disinfection | 13 |
| 2.3. Type of Disinfection Used | 13 |
| 2.4. Equipment Redundancy and Monitoring Requirements | 13 |
| 2.5. Turbidity Testing | 14 |
| 2.6. Other Testing Performed at the WTP | 14 |
| 2.7. Plant Operation | 14 |
| 2.8. Chemicals Added to our Water and Why | 15 |
| 3. Disinfectant Residual, Turbidity, Bacteria and Overall Performance Results | 16 |
| 3.1. List of Water Quality Standards | 16 |
| 4. Water System Incidents and Corrective Actions | 16 |
| 5. Additional Records Required | 16 |
| 6. Drinking Water Safety Orders and Actions Taken in Response | 16 |
| 7. Boil Water Advisories Issued and Actions Taken in Response | 16 |
| 8. Warnings Issued/Charges Laid in Accordance with the Drinking Water Safety Act | 16 |
| 9. Major Expenses Incurred | 16 |
| 10. Future System Expansion and/or Increased Production | 16 |
| 11. Water Production/Usage for 2015 | 17 |
| Table 1: Water Quality/Treatment Standards | 17 |
| Appendix "A" – Usage Charts | 18 |
| Appendix "B" – Annual Audit 2015 | 21 |

Introduction:

The 2015 Annual Report for the Melita Water Treatment Plant summarizes the water utility's ability to produce safe potable water and meet or exceed provincial regulations. We hope that the following report answers any and all questions regarding the water system. It is our belief that the public has a right to access information related to the drinking water they consume. To that end the following report has been prepared for the residents who are users of the system.

1. Description of the Water System

The Southwest Regional Water Co-op Public Water System (PWS) provides safe potable drinking water to the residents of Melita, Two Borders, Brenda, Napinka, Medora and Waskada through the distribution systems and to other rural residents by means of the Truck Fill System at the Water Treatment Plant (WTP). Treated water produced from the WTP meets or exceeds all health and aesthetic objectives as stated in the *Guidelines for Canadian Drinking Water Quality*.

The Melita Water Treatment Plant



1.1. Water Supply Source

The WTP receives groundwater from four wells located at 16 km North East of Melita @ NW23-5-27W. The wells draw groundwater from the Oak Lake Aquifer. The wells were drilled to a depth of 33 feet. Raw water pumped from the wells into a 200 mm (8 inch) pipeline where it flows directly into the WTP for processing and treatment.



Well Site 1

During 2007-2008, the Town of Melita developed a new Public Water System (PWS) which includes two groundwater wells, a Water Treatment Plant (WTP) in NW6-4-26W, and a raw water pipeline between the wells and the WTP. During the initial 6 months of operation it was determined the water supply wells have insufficient capacity due to the presence of impervious clay ridges which were not detected during the initial groundwater sourcing study. As a result, a new well field was developed on municipal right-of-way between SE24-5-27W and SW19-5-26W which is located 3.2kms east of the existing wells. This well field consists of two 760 mm (30 inch) wells, however, only the north well was mechanised and connected to the raw water supply line. This site will not be operational until spring 2010.

As water flows through the ground it dissolves metals and minerals. In the case of the Melita water supply, the water has come into contact with primarily iron and manganese. These items do not pose health concerns, rather they are known as aesthetic water quality parameters.

On September 23, 2010 the new well field was brought online. On December 16, 2010 it was decided to test the water coming from the new well field for Iron Bacteria due to production issues at the WTP. The tests came back positive and the decision was made to stop pumping and bring the original well field back online. The original well site was brought back online in early 2011 after it was swabbed and flushed to remove any iron bacteria from the raw water supply line to prevent contamination of the original well site. A plan is in place to treat the new well site and hopefully clear it of iron bacteria. At no time did iron bacteria enter the reservoir or any part of the distribution system.

1.2. Water Treatment Process

Raw water is pumped to the WTP where approximately 90% of the flow is directed through reverse osmosis membranes. The remaining 10% by-passes through a sand-filter with 3 new UV (ultraviolet) units prior to blending with membrane permeate. Blended flow is chlorinated with sodium hypochlorite and then stored in a 1,000,000 litre concrete reservoir for distribution. Since membranes remove most dissolved minerals, blending permeate with filter water allows the operation to produce treated water with a more desirable hardness and PH. Approximately 13% of membrane flow (11% of the raw water) is discharged as membrane concentrate to the Souris River. Treated water is distributed to the Co-op and a bulk water (truck) fill is available for rural usage. In the spring of 2014 the second RO unit and filter came online doubling the production capacity of the plant.

Truck Fill





The South RO (original unit)



The North RO (new)



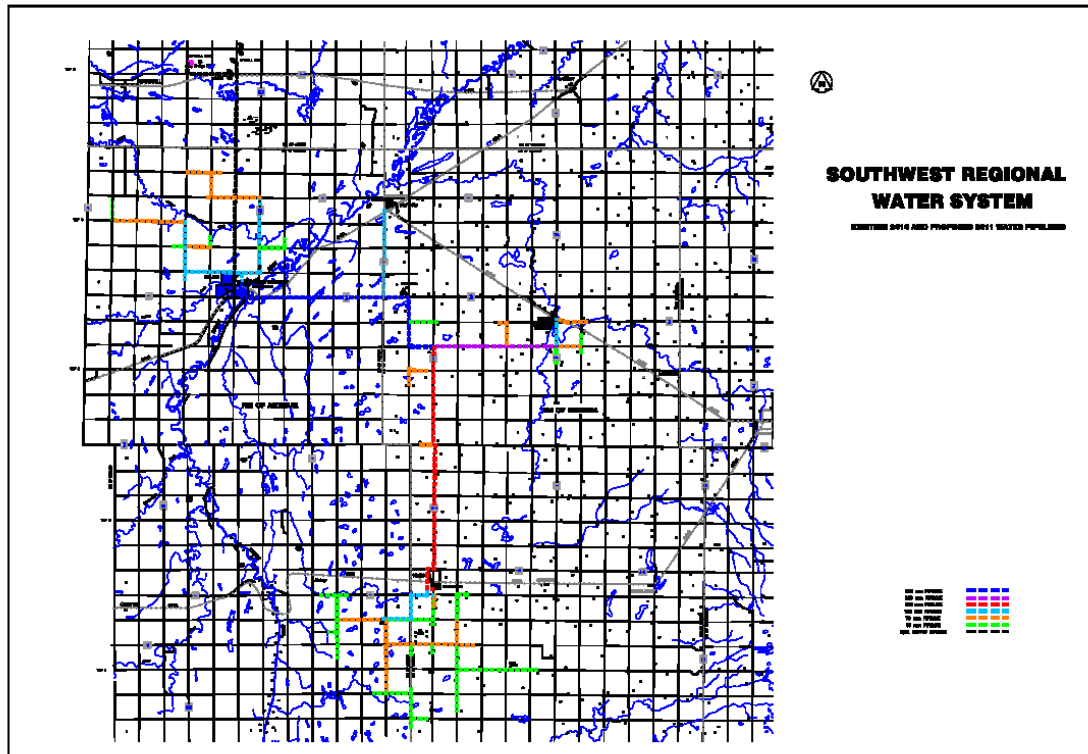
The Original Sand Filter with UV upgrade



The New Sand Filter with UV

1.3. Distribution System

Treated water from the reservoir, located underneath the WTP, is pumped throughout the Melita distribution system via two 7.5 horsepower duty pumps, with one 30 horsepower emergency standby pump for firefighting purposes. The SWRWC has one 7.5 horsepower duty pump. The SWRWC consists primarily of High Density Polyethylene Pipe. 12 miles of 8" raw water supply line, the distribution consists of the following 11 miles of 10", 5 miles of 8", 10 miles of 6", 18 miles of 4", 23 miles of 3", 25 miles of 2", for a total of 104 miles of pipe in the ground. A map of the current distribution system as it looks today is on the next page, the Waskada Rural Water Co-op already had several miles of pipe in place but is now part of the overall distribution system. The WTP also has a natural gas powered generator located in the building that powers the distribution pumps during times of a power failure.



The Distribution Pumps



The Generator

1.4. Storage Reservoir

The storage reservoir for the Co-op's drinking water has a capacity of 1,000,000 litres or 220,000 Imperial Gallons, which gives us an available storage time of 2 days without plant operation. Currently the plant runs daily keeping the reservoir full, the main reason for this is to have enough water on hand for firefighting and domestic use. It also helps to keep the water fresh and well circulated. Since the addition of the second RO and Filter the plant runs one RO and Filter on an alternating basis.

1.5. Number of Connections, Population Served and types of Water Users

The Melita distribution system is comprised of 592 service connections, with a population of 1056 (2006 Statistics Canada Census) approximately. The distribution system also services a few rural connections located directly around town in the RM of Two Borders.

In June of 2010 Phase 1 of the Rural Pipeline began construction and the South West Regional Water Co-op was formed which includes to date the Town of Melita, R.M. of Two Borders, R.M. of Brenda, Village of Waskada and the Waskada Rural Water Co-op.

In phase 1; Two Borders has 14 rural service connections, Brenda has 74 service connections 12 are rural connections 38 in Napinka and 24 in Medora. Connections to the Southeast of Melita were completed and came online in June, serving Brenda, Napinka, Medora and additional connections in Two Borders, completing phase 1 of the co-op pipeline. Waskada, the existing Waskada Rural Water Co-op and additional connections in Two Borders and Brenda came online in January 2012, when phase 2 was completed.

1.6. Classification and Certification

- The Melita WTP is classified as a Class 2 Water Treatment Facility.
- Certification Level of Operators;
 - Brock Bolton, Level 2
 - Rob McCutcheon, currently in the process of obtaining certification.

1.7. Hydrological Investigations

In 2005, KGS Group conducted a groundwater sourcing study near the Broomhill truck loader station approximately 16 km north of Melita. The objective of the study was to carry out exploratory drilling and installation of a production well with sufficient capacity for the Town's water supply. KGS Group conducted an EM34 survey and drilled approximately 20 test-holes and installed 15 monitoring wells. A 96.5 hour pump test at a constant 15 L/s pump rate was completed and drawdown was monitored. In October 2005, a 200 mm (8 inch) production well was installed on the NW23-5-27W on the Broomhill Wildlife Management Area (WMA). The water level was recorded to be 1.8 meters below ground at the time of drilling. A second production well was installed 15 meters south of the first in 2007 so that one well could act as a backup supply.

After commissioning the WTP in 2009, a monitoring well system was installed which showed a significant water table drop over the first 6 months of operation. Subsequent test drilling by KGS Group showed that the aquifer was not continuous as originally determined from the 2005 investigations. Newer test drilling at close intervals showed the presence of clay ridges that separated the larger aquifer into smaller basins. It was determined that these clay ridges result in an "egg carton" or "ice cube tray" effect such that once the water table dropped below the top of the ridges, the production wells, which are located into a much smaller basin, are unable to sustain withdrawals necessary to sustain Melita.

1.8. Artificial Recharge

Test drilling activities in 2009 revealed at least three separate basins in close proximity to the well field. The basins are referred to as the south, middle and north basins whereby the production wells are located in the south basin. In addition, the Broomhill truck loader station is also located in the south basin. Due to the water table drop, the pump in the truck fill had to be lowered to maintain its operation. Recharge infrastructure include a 760 mm (30 inch) well was installed in both the middle and north basin. A 75 mm pipe line was installed from the middle basin well to the south production well. This would allow groundwater from the middle basin to be pumped to the production well site and artificially recharge the south basin. However, due to Manitoba Hydro power restrictions, this well can only be pumped while the production well is not in operation. The WTP generally requires water for about 13 hours a day on average for 2012, such that the middle basin is pumping only when needed. When recharging is required the pump is turned on and runs continually until water levels are back up to an acceptable level and then turned off until needed. Pumping groundwater from the middle basin to the south basin commenced on August 26th, 2009 on an as needed basis and wasn't used in 2010 and since then only as needed.

Since the middle basin could only be pumped intermittently, the north basin well was temporarily equipped with a pump, generator and overland pipeline to speed up the water table recovery. Pumping from this basin occurred from September 3rd to September 21st until water levels significantly recovered and the north basin water table prevented further pumping. The water table in the north basin has since recovered. In 2012 the north basin was converted to a supplemental well to improve operating pressures and flows to the plant when it is in operation.

Currently, the middle basin well is intermittently pumped to the production well site in an attempt to maintain water levels until the new well field located on the SE24-5-27W can be put into operation. KGS Group determined that pumping from all three basins will not be sustainable to meet Melita demands and recommended developing the new well site. At this point the new well field is still not in operation as all attempts to remove the iron bacteria from it have failed.

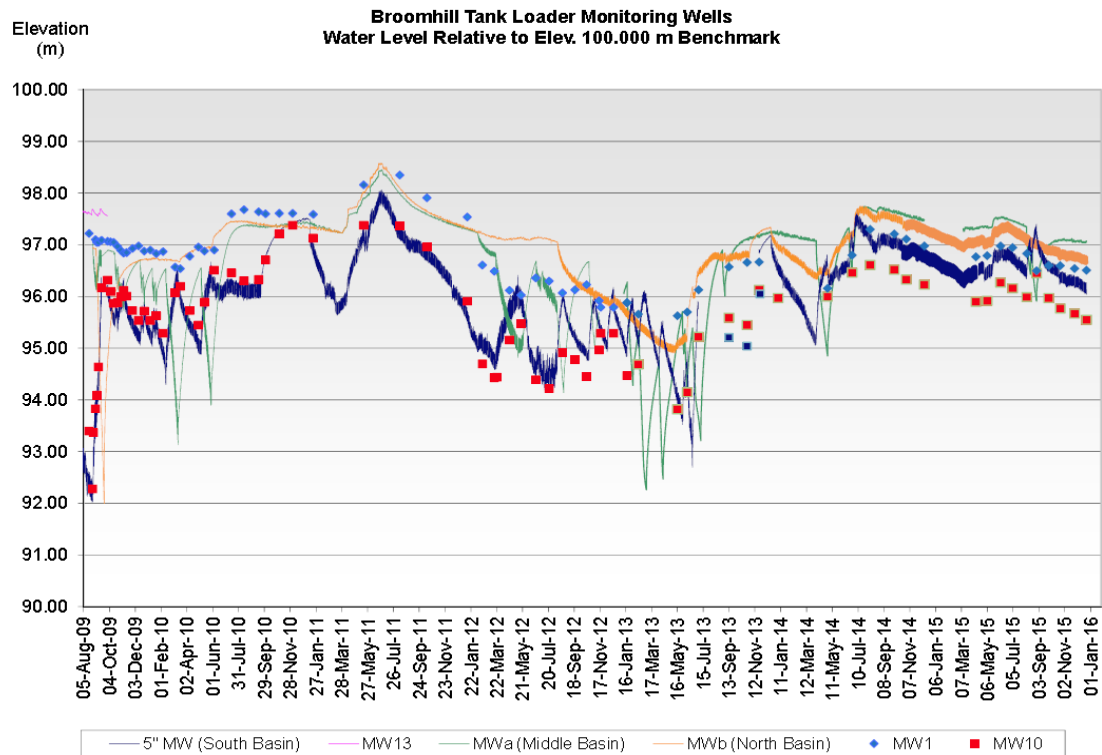
The updated graph on page 11 shows ground water levels at various points at and around the original wells.



Recharge Wells

1.9. Groundwater Levels and Monitoring

Groundwater monitoring commenced in July 2009. As many as four pressure transducers were initially set-up and currently three pressure transducers are continuous and manual readings. This graph uses a benchmark of 100.00 m in order to compare levels in each the three basins.



The locations of all monitoring wells are shown in the appendices. 5" MW represents the water table depth near the production well, while MWa and MWb represent the water table depth in the middle and north basins.

In 2007, the Manitoba Water Services Board (MWSB) developed a groundwater monitoring plan for the existing well field (site 1) as required in Environment Act license No. 2745 issued to the Town of Melita. On October 5, 2009, MWSB requested a minor alteration to this license to include the new well field (site 2) located on the SE24-5-27W. As a result, Manitoba Conservation requires a revised water level monitoring plan.

Once operational, site 2 will become the main supply for the Town of Melita. Site 1 will remain as a backup supply. Therefore, the groundwater monitoring plan will include monitoring of both sites. The following groundwater monitoring plan is proposed for a period of two years commencing site 2 operation. After two years, the location and frequency of groundwater monitoring is proposed to be re-evaluated.

Site 1 – NW23-5-27W

In 2009, three new monitoring wells were installed at site 1. A 125 mm monitoring well (MW-21) was installed 15 m east of the production wells in the south basin, a 50 mm monitoring well (MW-22) located 110 m north of the north production well in the middle basin, and a 50 mm monitoring well (MW-23) located 245 m north of the north production well in the north basin. All three monitoring wells were equipped with pressure transducers. However, it is proposed to maintain two pressure transducers at MW-21 and MW-22 for continuous monitoring. A manual water level reading with an electronic tape is proposed semi-annually at MW-10, MW-23 and MW-14. The monitoring of these wells will provide water level data on each of the three basins as well as MW-14 located outside of the basins.

Site 2 – SE24-5-27W

The proposed monitoring system for site 2 will include pressure transducers installed in MW-103 near the proposed production well and in MW-104 located adjacent to the Harmon farmstead. Manual level readings are proposed semi-annually at MW-100, MW-101 and MW-102. MW-100 is located near the Miner and Carr properties. Each monitoring well is protected with a locked steel cover. However at each monitoring well location, a second 50 mm monitoring well (without steel cover and lock) was provided for public observations.

2. Water Testing

Water tests are taken daily on a routine basis to ensure that the water is safe and to monitor how well the treatment process is performing. We test the water at the WTP and in the distribution system. We perform daily tests at the WTP on 6 different aspects of the treatment process.

- Distribution Tests (*water taken from a point in the distribution system*) on average 6 tests per day.
- Treated Tap (*water taken from a point in the WTP before it leaves the plant*) on average 6 tests per day.
- Raw (*untreated well water as it enters the WTP*) on average 4 tests per day.
- Permeate (*water from the R.O. Unit before chemical addition*) on average 3 tests per day.
- Sand-filter (*treated water from the sand-filter, before it blends with R.O. water*) 7 tests per day, 5 when chlorine isn't used as a pre-treatment.
- MTU or Main Treatment Unit (*water from all 12 vessels and 4 stages*) 16 tests per day for conductivity.

There are on average 42 tests performed a day at the WTP and another 6 rurally, or 1,460 tests a month, 17,520 tests a year.

2.1. Bacterial Testing

We sample the raw water (untreated well water), the treated water (water leaving the treatment plant) and the water in 4 locations in the distribution system one from a location in the RM of Two Borders, another from a location in the RM of Brenda-Waskada and one each from the outgoing waters at the Napinka and Waskada reservoirs every two weeks (bi-weekly) for the presence of Total Coli forms (TC) and E. Coli (EC) bacteria. If these bacteria are present in the water it is an indication that disease causing organisms may also be present. Since the completion of phase 2 WTP staff now collects 6 samples instead of the 10 samples previously. New licences were issued in 2012 and now Melita, Brenda (Napinka and Medora) and Waskada have to do their own sampling for their distribution systems. These 6 samples are then sent via courier to a provincially sanctioned lab in Winnipeg for testing. For 2015 all samples sent for testing passed.

2.2. Disinfection

The final step in the treatment of safe water is disinfection. Disinfection is the selective destruction or inactivation of potential disease causing organisms in water. Per the *Drinking Water Safety Act* the Melita PWS must ensure that a disinfection residual of at least:

- 0.5 mg/L of free chlorine per litre of water is detectable at the point where water enters the distribution system, after a minimum contact time of 20 minutes.
- 0.1 mg/L of free chlorine per litre of water is detectable at all times at any point in the distribution network.
- 95% of water produced through the filters per month is disinfected within validated UV conditions.

For 2015 all samples tested met both the above standards.

2.3. Type of Disinfection Used

The Melita WTP disinfects by adding a 12% sodium hypochlorite solution to the water via 3 chlorinator pumps. One for the raw water before it enters the sand-filter (pre-treatment) and two for the blended water before it enters the reservoir. In 2012 three UV units were added after the filter. In 2015 three more UV units were added after the second filter.

2.4. Equipment Redundancy and Monitoring Requirements

As required by the *Drinking Water Safety Act* the Melita PWS ensures continuous disinfection is maintained at the WTP by keeping in stock all spare parts required for the chlorinators, as well there are



Online Monitoring Equipment

two spare chlorinator pumps kept at the plant. Disinfection residuals are monitored continuously by an online monitor that monitors the water continuously as it leaves the WTP. We also monitor the residuals daily at the WTP and in the distribution system; these tests are performed at the WTP after the samples are collected. The results of all tests are recorded on our records at the WTP as well as Monthly Chlorination Report forms which are sent to the regional *Drinking Water Officer* at the end of each month, to check for standard compliance.

2.5. Turbidity Testing

Turbidity is a measurement of the clarity of water. We use turbidity as another means to tell us how well our treatment system is working and to remove particles and other contaminants that can cause the water to look cloudy and affect our disinfection process. Turbidity is tested daily, the raw, treated, sand-filters and distribution by a portable testing meter. The water from the sand-filters and from the MTUs is monitored continuously while the plant is in operation, by two separate online turbidity monitors. The results of all turbidity tests are recorded on our records at the WTP as well as Monthly Turbidity Report forms which are sent to the regional *Drinking Water Officer* at the end of each month to check for standard compliance. For 2015 all samples met the turbidity standards.

2.6. Other Testing Performed at the WTP

- Iron Testing: Is performed daily on the following samples, distribution, treated tap, sand-filter. Every 5 days on the raw and every 10 days on permeate.
- Manganese Testing: Is performed daily on the following sample, sand-filter and every 7 days on the distribution, treated tap, raw and permeate.
- PH Testing: Is performed daily on the following samples, treated tap, raw, permeate and concentrate.
- Hardness Testing: Is performed every 10 days on the following samples, raw and treated tap.
- Chlorine Testing: Is performed daily on the following samples, distribution, and treated tap and sand-filter. As previously described in sections 2.2 and 2.3.
- Conductivity Testing: Is performed daily on the following samples, permeate, distribution, treated tap, raw, sand-filter and all 23 vessels on both RO units.

2.7. Plant Operation

The WTP is monitored continuously by the computer system; it is continuously taking readings from 85 different locations by sensors, probes and meters. This information is displayed in real-time on a different number of screens (*see Figure A, B, C which show three different computer screens*) and is also recorded and compiled in the form of a trend. These trends can be accessed at any time and show a history of plant operation in various areas (*see Figure D for an example of a trend screen*).

Figure A

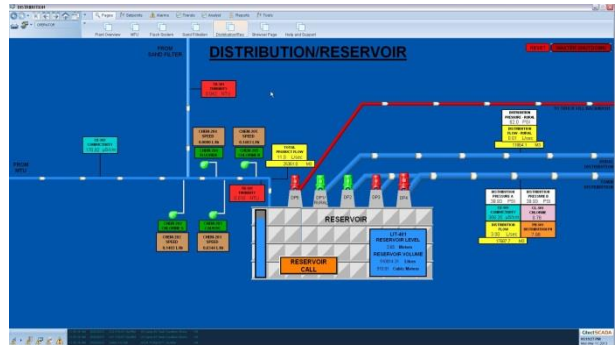
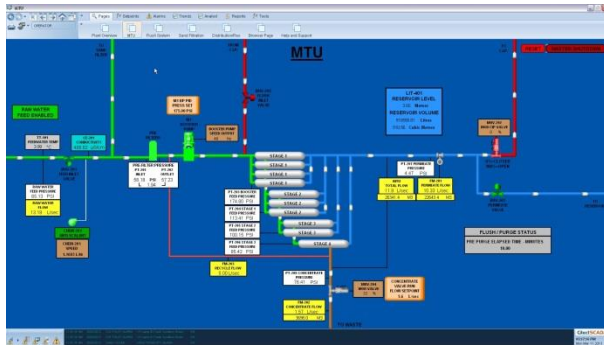


Figure B

Figure C

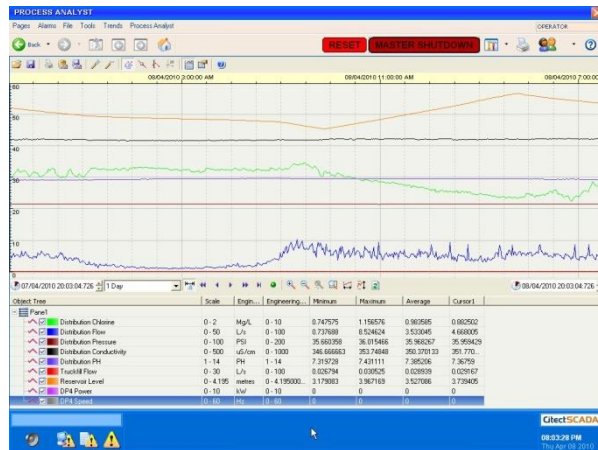
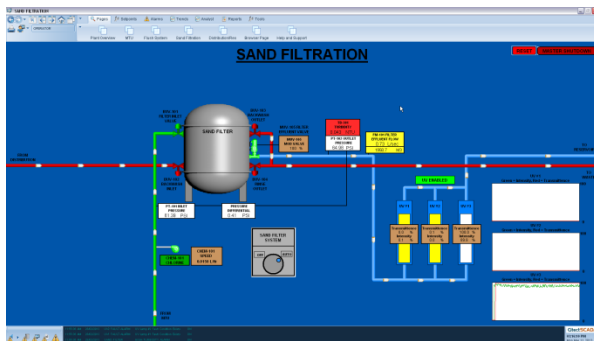


Figure D

2.8. Chemicals Added to our Water and Why

- Sodium Hypochlorite 12%: (Chlorine) Disinfectant, source of available chlorine.
- Avista Vitec 3000: (Antiscalant) Injected in the raw water before the membranes to protect them and aid in the treatment process.
- Sodium Hydroxide 50%: (Caustic Soda) Acid neutralization raises PH.

3. Disinfectant Residual, Turbidity, Bacteria and Overall Performance Results

For 2015, the SWRWC PWS has met all regulatory requirements in regard to monitoring and reporting in the WTP, leaving the WTP and in the distribution system (*see Table 1 and Appendix "B" – Annual Audit – 2015*).

3.1. List of Water Quality Standards

The province of Manitoba has adopted a number of water quality standards from the *Guidelines for Canadian Drinking Water Quality* developed by Health Canada and two regulations under the *Drinking Water Safety Act* (*see Table 1*). A copy of the Annual Audit – 2015 from the Office of Drinking Water is located in *Appendix "B"*.

4. Water System Incidents and Corrective Actions

In 2015 the SWRWC PWS still has two residents with taste and odour issues due to line size and length and the SWRWC has a plan in place to permanently solve the problem for one and a maintenance plan for the other.

5. Additional Records Required

As of August 2012 fluoride is no longer added to the water.

Daily Log Sheets are also kept to check plant performance, copies of these forms are sent into the Water Services Board for review.

Distribution Flows and Pressures Data Sheets are also kept to keep an eye on flows and pressures of the water leaving the reservoir.

Conductivity Sheets are also kept to check plant performance, copies are also sent into the Water Services Board for review.

Pressures and Flows are also recorded at 4 locations on the rural pipeline (Napinka, the Booster Station, Medora and Waskada).

6. Drinking Water Safety Orders and Actions Taken in Response

In 2015, no drinking water safety orders were issued for the SWRWC PWS.

7. Boil Water Advisories Issued and Actions Taken in Response

In 2015, no boil water advisories were issued for the SWRWC.

8. Warnings Issued/Charges Laid in Accordance with the Drinking Water Safety Act

In 2015, no warnings were issued or charges laid for the SWRWC PWS.

9. Major Expenses Incurred

None

10. Future System Expansion and/or Increased Production

There is still a demand to further expand the rural pipeline and the well and raw water pipeline upgrades still have to be completed.

11. Water Production/Usage for 2015

The treatment system capacity was designed to meet a 20 year future demand for Melita as well as additional capacity for the rural water system. Although that has proven to be incorrect and will be revised accordingly as after only 4 years several upgrades have already taken place and more scheduled in the near future. The water system production and usage are summarized in the following charts in **Appendix “A” – Usage Charts**.

Table 1: Water Quality/Treatment Standards

| Parameter | Quality Standard | SWRWC Result |
|------------------------------|--|--------------|
| Total Coliform | Less than one total coliform bacteria detectable per 100 mL in all treated and distributed water | 100% |
| E. Coli | Less than one E. Coli bacteria detectable per 100 mL in all treated and distributed water | 100% |
| Chlorine Residual | A free chlorine residual of at least 0.5 mg/L in water entering the distribution system following a minimum contact time of 20 minutes | 100% |
| | A free chlorine residual of at least .01 mg/L at all times at any point in the water distribution system. | 100% |
| Ultraviolet Disinfection | 95% of water produced per month is disinfected within validated conditions | 100% |
| Turbidity | Less than or equal to 0.1 NTU in 99% of the measurements in a month of the effluent from each membrane filtration unit | 100% |
| | Not exceeded 0.3 NTU for any continuous measurement | 100% |
| Total Trihalomethanes (THMs) | Less than or equal to 0.10 mg/L as locational annual average of quarterly samples | 0.0047 |
| Haloacetic Acids (HAAs) | Less than or equal to 0.08 mg/L as locational annual average of quarterly samples | <0.0054 |
| Arsenic | Less than or equal to 0.01 mg/L | <0.00020 |
| Benzene | Less than or equal to 0.005 mg/L | <0.00050 |
| Fluoride | Less than or equal to 1.5 mg/L | <0.020 |
| Lead | Less than or equal to 0.01 mg/L in the water distribution system | <0.000090 |
| Nitrate | Less than or equal to 45 mg/L measured as nitrate (10 mg/L measured as nitrogen) | 0.110 |
| Trichloroethylene | Less than or equal to 0.005 mg/L | <0.00050 |
| Tetrachloroethylene | Less than or equal to 0.01 mg/L | <0.00050 |
| Uranium | Less than or equal to 0.02 mg/L | 0.00072 |

Appendix “A” – Usage Charts

Raw

| Total Gals | Highest Day | Lowest Day | Daily Average |
|------------|-------------|------------|---------------|
| 46,767,628 | 231,497 | 64,978 | 128,130 |

Melita

| Total Gals | Highest Day | Lowest Day | Daily Average |
|------------|-------------|------------|---------------|
| 26,810,353 | 114,758 | 48,899 | 73,453 |

Melita Truck Fill

| Total Gals | Highest Day | Lowest Day | Daily Average |
|------------|-------------|------------|---------------|
| 695,591 | 18,062 | 0 | 1,906 |

Napinka

| Total Gals | Highest Day | Lowest Day | Daily Average |
|------------|-------------|------------|---------------|
| 1,719,151 | 15,639 | 1,982 | 4,710 |

Napinka Truck Fill

| Total Gals | Highest Day | Lowest Day | Daily Average |
|------------|-------------|------------|---------------|
| 97,534 | 2,467 | 0 | 267 |

Medora

| Total Gals | Highest Day | Lowest Day | Daily Average |
|------------|-------------|------------|---------------|
| 566,531 | 5,947 | 661 | 1,552 |

Waskada

| Total Gals | Highest Day | Lowest Day | Daily Average |
|------------|-------------|------------|---------------|
| 4,184,808 | 25,991 | 5,727 | 11,465 |

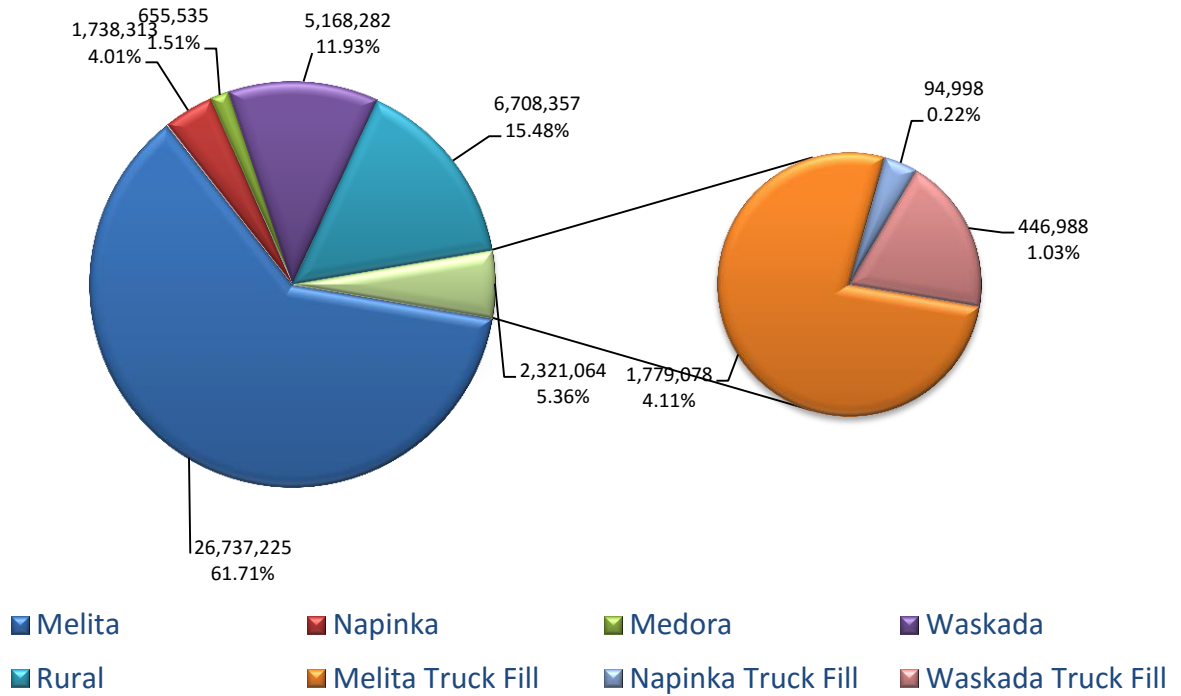
Waskada Truck Fill

| Total Gals | Highest Day | Lowest Day | Daily Average |
|------------|-------------|------------|---------------|
| 457,905 | 8,589 | 0 | 1,255 |

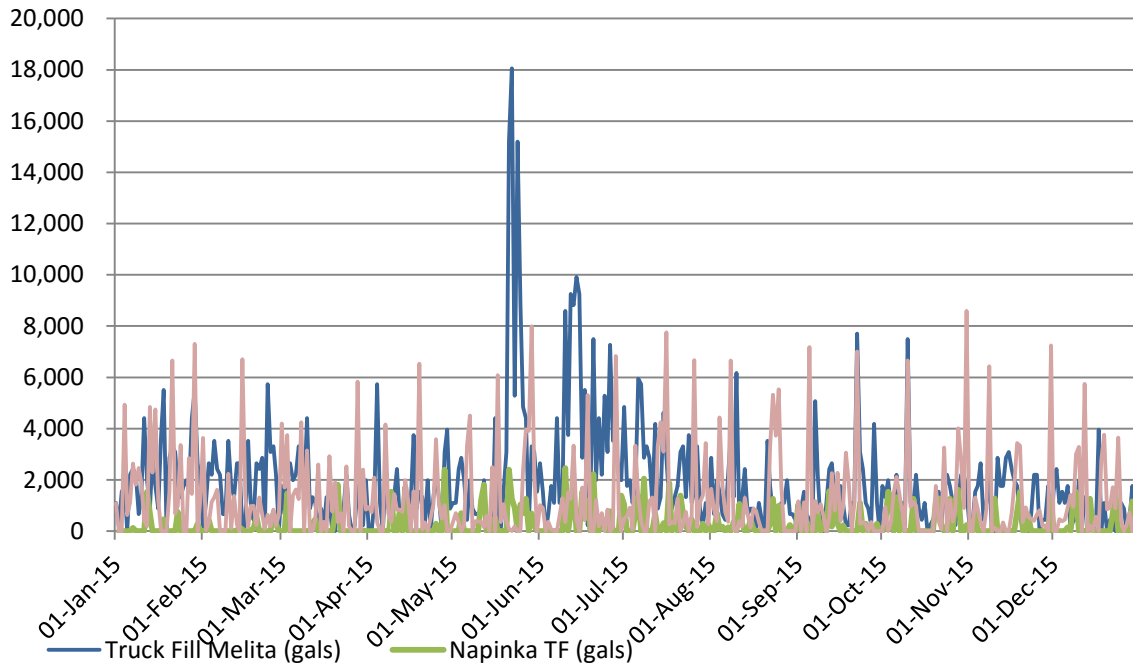
Rural

| Total Gals | Highest Day | Lowest Day | Daily Average |
|------------|-------------|------------|---------------|
| 5,063,653 | 11,013 | 6,167 | 13,873 |

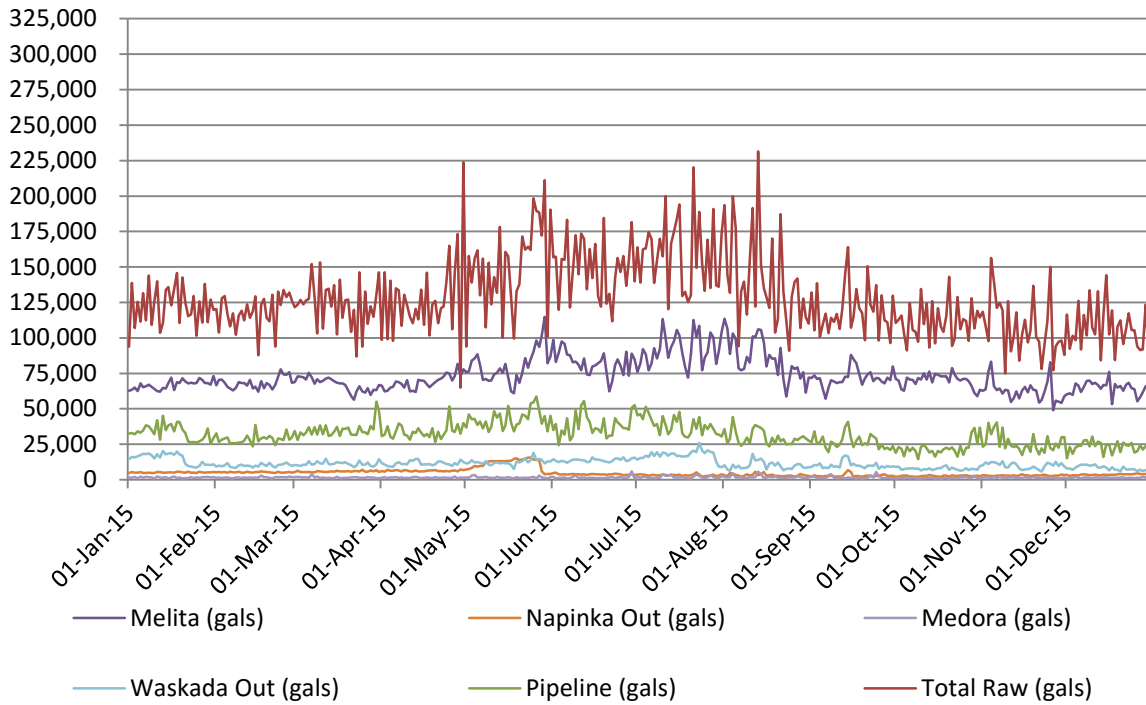
2015 Usage Chart in Imperial Gallons



2015 Truck Fill Usage Chart



2015 Usage Chart



Appendix “B” – Annual Audit 2015



Conservation and Water Stewardship

Office of Drinking Water

1129 Queens Avenue, Brandon, Manitoba Canada R7A 1L9

T 204-726-6563 F 204-726-6567

www.manitoba.ca/drinkingwater

File: 205.10

January 25, 2016

Brock Bolton, General Manager
Southwest Regional Water Co-op
Box 40
Waskada MB R0M 2E0

2015 Annual Compliance Audit

Dear Mr. Bolton:

Please find enclosed the 2015 Annual Compliance Audit for the Southwest Regional Water Co-op public water system (PWS). The report compares water system compliance to *The Drinking Water Safety Act* and its supporting regulations, and the terms and conditions of the water system's current operating licence (PWS-11-495 AA).

Where non-compliance items are identified, the issues do not necessarily translate into increased public health risk. The Office of Drinking Water uses processes, including boil water advisories, to notify water users of a public health risk.

Please review the following terms and conditions of your operating licence to ensure on-going compliance:

- Water quality sampling frequencies identified in *Table 2*.
- Engineering Assessment (due date: March 1, 2017)
- 2015 Public Water System Annual Report (due date: March 31, 2016)

The Haloacetic Acid (HAA) standard of 0.08 mg/L will now be applied as a standard in all surface and groundwater under the direct influence of surface water (GUDI) operating licences as they are amended or renewed. The HAA standard will also apply to groundwater systems where HAAs are found to be above the standard. Where a system is not in compliance with the HAA standard of 0.08 mg/L, a compliance plan will be required to address the standard.

Water suppliers that have been monitoring for HAAs and are currently preparing a compliance plan for Trihalomethanes should include HAAs in the plan in advance of the change to the operating licence clause.

Water suppliers are reminded to immediately notify the Office of Drinking Water of any condition(s) that may affect the ability of the water system to produce or deliver safe drinking water. These conditions include:

- treatment upsets, bypass conditions, operation outside of licence conditions
- contamination of source or treated water
- a disinfection, filtration, or distribution system failure

The 2015 Annual Compliance Audit is based on information submitted to this office. If you have questions regarding non-compliance items identified in this audit, review your records prior to contacting this office. If your records conflict with the audit information please call me at 204-726-6563.

Sincerely,

Glen Robertson
Senior Regional Drinking Water Officer

Enclosures

copy: Diane Woodworth
ecopy: Angela Meier, Manitoba Water Services Board

2015 Annual Compliance Audit

Water System: SOUTHWEST REGIONAL WATER CO-OP - PWS

Code: 205.10

Water System Owner: Southwest Regional Water Co-op Inc.

Water System Operating Licence: PWS-11-495 A

Expiry Date: May 31, 2016

- 1) This report documents the Southwest Regional Water Co-op Public Water System compliance for the period from January 1 to December 31, 2015.
- 2) Addendum A to this report provides specific information on the non-compliance incidents identified in the summary below.
- 3) Other than the information provided in attached Addendum A, the water supplier has complied with *The Drinking Water Safety Act*, its supporting regulations, and the terms and conditions of the water system's current operating licence
- 4) This report is based on information submitted by the water supplier, agents of the water supplier, and / or the Province of Manitoba.

Summary of Non-Compliance Incidents:

| |
|---------------|
| None reported |
|---------------|

Addendum A: Record of Non-Compliance

Water System: SOUTHWEST REGIONAL WATER CO-OP - PWS

Report period: January 1, 2015 to December 31, 2015.

Enforcement Action Taken

| Date | Clause | Incident | Outcome |
|------|--------|---------------|---------|
| | | None reported | |

Disinfection Requirements

| Date | Samples | Incident | Outcome |
|------|---------|---------------|---------|
| | | None reported | |

Bacteriological Requirements

| Date | Samples | Incident | Outcome |
|------|---------|---------------|---------|
| | | None reported | |

Microbial Requirements

| Date | Clause | Incident | Outcome |
|------|--------|---------------|---------|
| | | None reported | |

Turbidity Requirements

| Date | Samples | Incident | Outcome |
|------|---------|---------------|---------|
| | | None reported | |

Chemical Requirements

| Date | Clause | Incident | Outcome |
|------|--------|---------------|---------|
| | | None reported | |

Operational Requirements

| Date | Clause | Incident | Outcome |
|------|--------|---------------|---------|
| | | None reported | |