

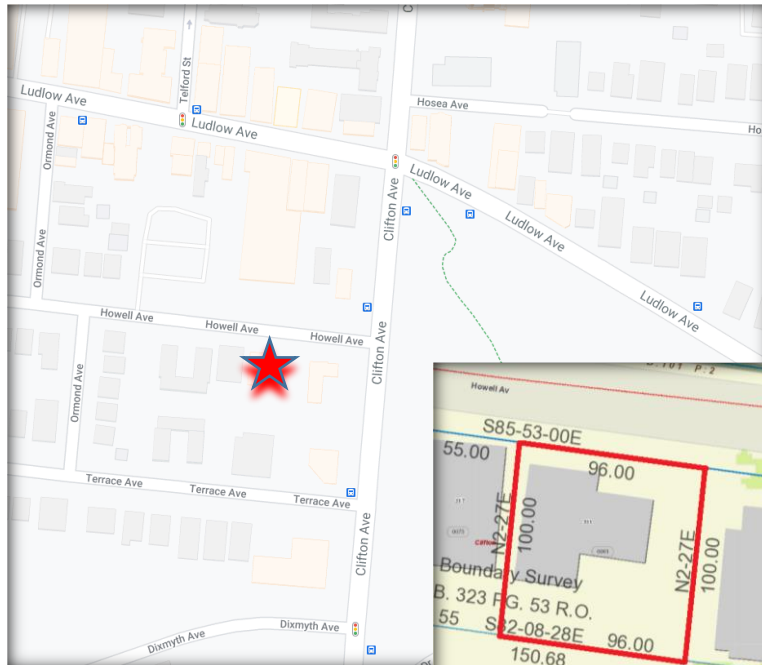
Site Info

- Municipality:
City of Cincinnati
- Neighborhood:
Clifton
- Parcel ID:
101-0002-0061-00
- Zoning: CN – M
- Land Area: 0.221 Ac
- Year Built: 1962
- Construction:
Brick & Block
- Foundation: Poured
- Individually Metered
-excl GCWW, MSD
- Building Size:
5,306 SF
- Internal Stairwell
- Floorplate: 2,653 SF
- Upper Level: Vacant
- Lower Level: Leased
Month to Month
Tenant
- Parking: 17 Stalls

- Asking Rate:
\$16/psf MG
- Asking Price:
\$895,000

Available

311 Howell Ave
Cincinnati OH 45220



DWYER
COMMERCIAL REAL ESTATE LLC

2928 Colerain Ave Ste 100
Cincinnati OH 45225

Contact:
John or Kevin

513.784.1776
www.dwyercre.com

The information contained herein has been obtained from sources we deem reliable. We have no reason to doubt but don't guarantee its accuracy