

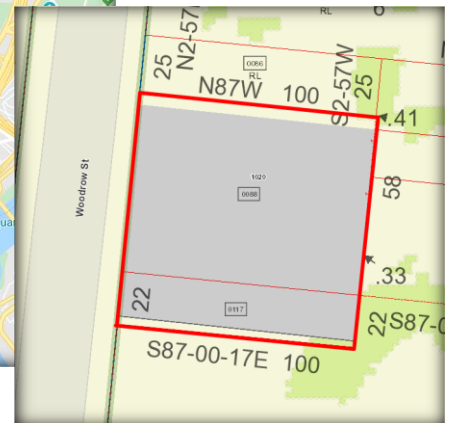
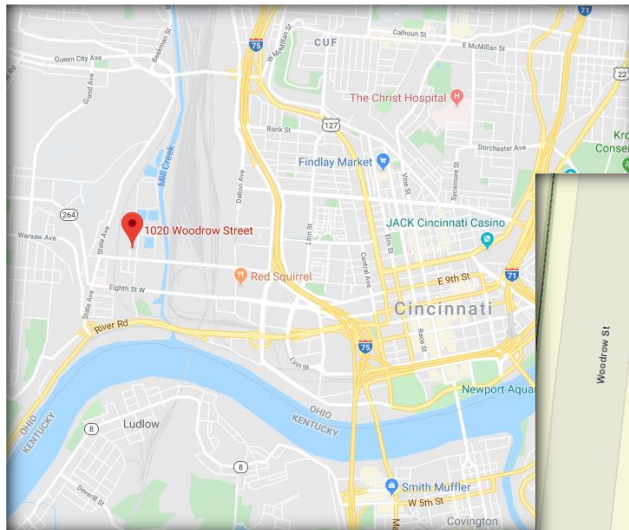
## Site Info

- Municipality:  
City of Cincinnati
- Neighborhood:  
Lower Price Hill
- Parcel ID:  
148.0011.0088.00
- Zoning: MG
- Land Area: 0.226 Ac
- Year Built: 1890
- Construction:  
Brick & Block
- Slab on Grade
- Building Size:  
14,000 SF
- Office Space: 720 SF
- Whse 1<sup>st</sup> Flr: 8,280
- Second Flr: 5,000 SF
- Clearance: 10' – 12'
- Column Spacing:  
16' x 16'
- Drive-Ins:  
7' 10" x 13' 8"  
9' 10" x 13' 8"
- Power: Single Phase  
3Ph Disconnected
- Gas, Water, Sewer
- Exhaust Fans
  
- Asking Price:  
\$325,000

*The information contained herein has been obtained from sources we deem reliable. We have no reason to doubt but don't guarantee its accuracy*

# For Sale

1020 Woodrow St  
Cincinnati OH 45205



**DWYER**  
COMMERCIAL REAL ESTATE LLC

2928 Colerain Ave Ste 100  
Cincinnati OH 45225

**Contact:**  
**John or Kevin**

513.784.1776  
www.dwyercre.com