



PLACE
STAMP
HERE

*“Communication consistency is a
vaccine for your organization”*

Fabsys, LLC
8929 Dayflower Dr.
Ooltewah, TN 37363-6934

```
WHLKW = WHL / 3.412141633 / 1000

frmHVAC_01.lblHeatRequiredKW.Caption = Format(WHLKW, "#####0.00")
frmHVAC_02.lblHeatRequiredKW.Caption = Format(WHLKW, "#####0.00")
frmHVAC_03.lblHeatRequiredKW.Caption = Format(WHLKW, "#####0.00")
frmHVAC_04.lblHeatRequiredKW.Caption = Format(WHLKW, "#####0.00")
frmHVAC_05.lblHeatRequiredKW.Caption = Format(WHLKW, "#####0.00")
frmHVAC_06.lblHeatRequiredKW.Caption = Format(WHLKW, "#####0.00")
frmHVAC_07.lblHeatRequiredKW.Caption = Format(WHLKW, "#####0.00")
frmHVAC_08.lblHeatRequiredKW.Caption = Format(WHLKW, "#####0.00")
frmHVAC_09.lblHeatRequiredKW.Caption = Format(WHLKW, "#####0.00")
frmHVAC_10.lblHeatRequiredKW.Caption = Format(WHLKW, "#####0.00")
frmHVAC_11.lblHeatRequiredKW.Caption = Format(WHLKW, "#####0.00")
frmHVAC_ExhaustVent.txtHeatRequired.Text = Format(WHLKW, "#####0.
```

SUMMER HEAT GAIN

```
SHGWalls = WallSquareFt * (WallETD / RValueWalls)
SHGRoof = RoofSquareFt * (RoofETD / RValueRoof)
```

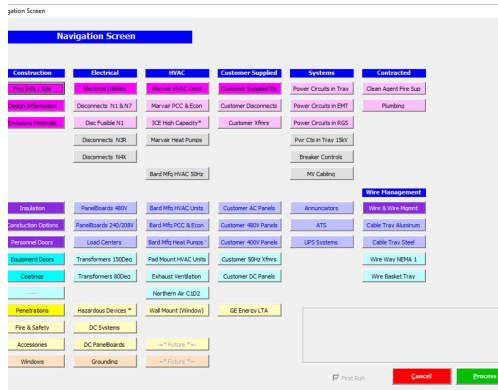


```
frmHVAC_07.lblACRequiredTons.Caption = Format(SHGtons, "#####0.00")
frmHVAC_08.lblACRequiredTons.Caption = Format(SHGtons, "#####0.00")
frmHVAC_09.lblACRequiredTons.Caption = Format(SHGtons, "#####0.00")
frmHVAC_10.lblACRequiredTons.Caption = Format(SHGtons, "#####0.00")
frmHVAC_11.lblACRequiredTons.Caption = Format(SHGtons, "#####0.00")
```

VENTILATION DESIGN
VentTD = 10

FABSYS, LLC

Estimating
Configurators



Our Success Stories

We have designed configurators for major equipment building manufacturers effectively reducing proposal preparation time, reducing errors and increasing sales. The programs handle many of the complex task in the background including but not limited to:

- Base design considering multiple parameters such as floor loading, deflection, size and multi-section.
- Wind, Seismic and Snow Loading
- Electrical requirements including material and labor for circuits from 15A to 2000A
- HVAC design considering design location parameters, internal heat loads, redundancy

More accurate proposals

Reducing the time to prepare proposals allows more time for estimators to focus on the details of each proposal and allows for more proposals to be produced in the same amount of time.

Consistent communication in the proposal means a consistent product through the entire course of your operation.



Who We Are

We have 35 years experience in the fabrication of products in a fabrication shop environment. The experience covers sales, estimating, procurement production and accounting we use the tools you are probably are already employing. We just take them to the next level. Tools, like Excel, ERP and AutoCAD.

Call us for an evaluation of your current estimating tools. We might be able to add automation to your current process or we can design a new one custom for your organization.



What would you do with extra time?

Advantages

- Faster proposal generation and response to customers
- Increase proposal volume output & accuracy
- Standardize proposals increase confidence and reduce risk
- Maintain a library of uniform information to select from when preparing proposals
- Communicate clearly to the customer and production what is in each proposal and what design information has been considered.
- Create the most efficient proposal possible over varying design conditions
- Guide estimators in uniform consistent approaches to problems
- Allows for additions and deletions in unique situations.
- Allows for the use of past projects as a template to create similar proposals or revisions.
- Faster acclimation of new estimators
- Proposal BOM can transition from Estimating to Engineering to Production to QC effectively reducing errors and misinterpretations.

Contact Us

Fabsys, LLC
8929 Dayflower Drive
Ooltewah, Tennessee 37363-6934

Thomas (Tom) Hoffpauir Jr.
(423) 391-6019
tahoffpauir@fabsysllc.com

Visit us at: www.fabsysllc.com