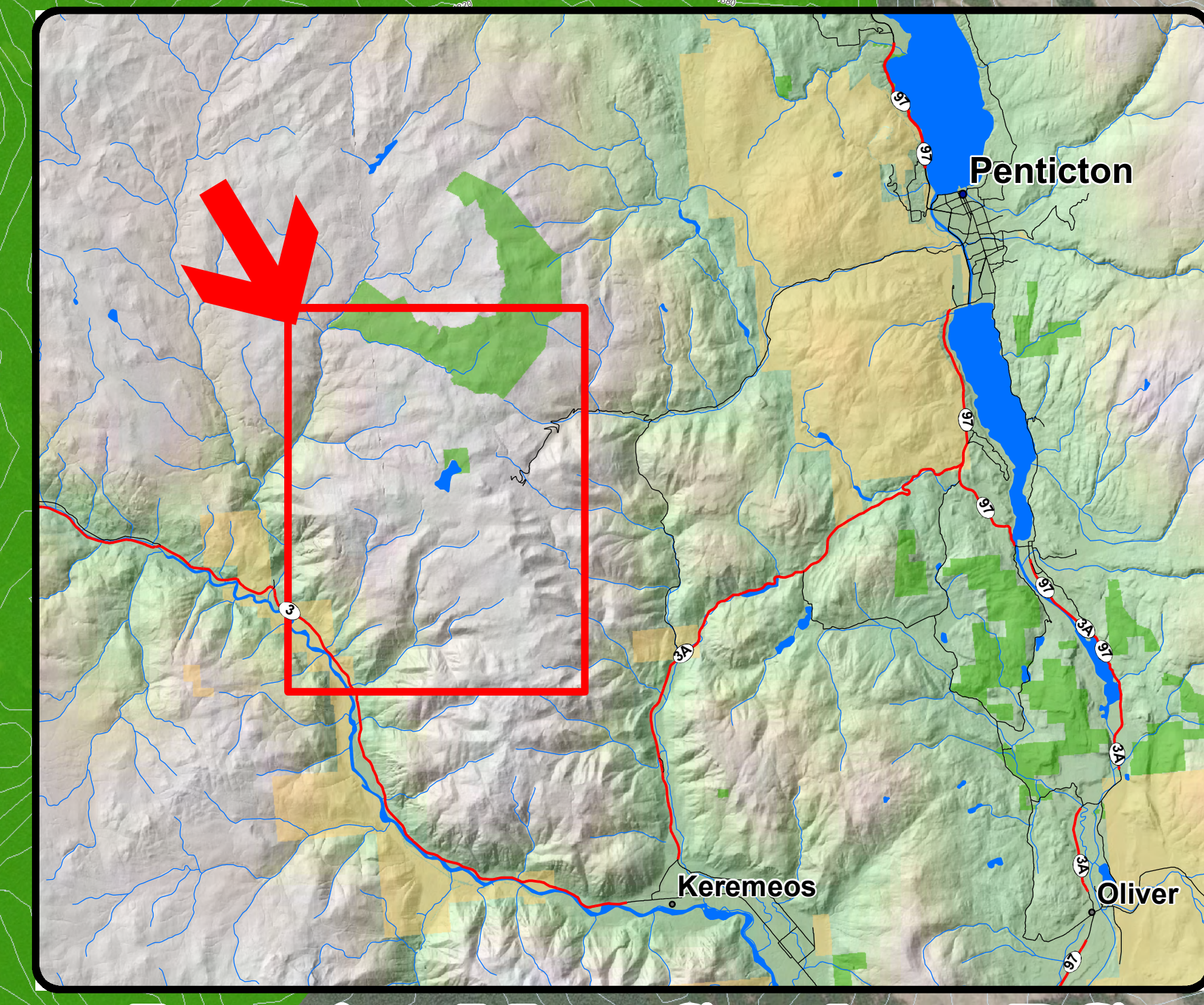
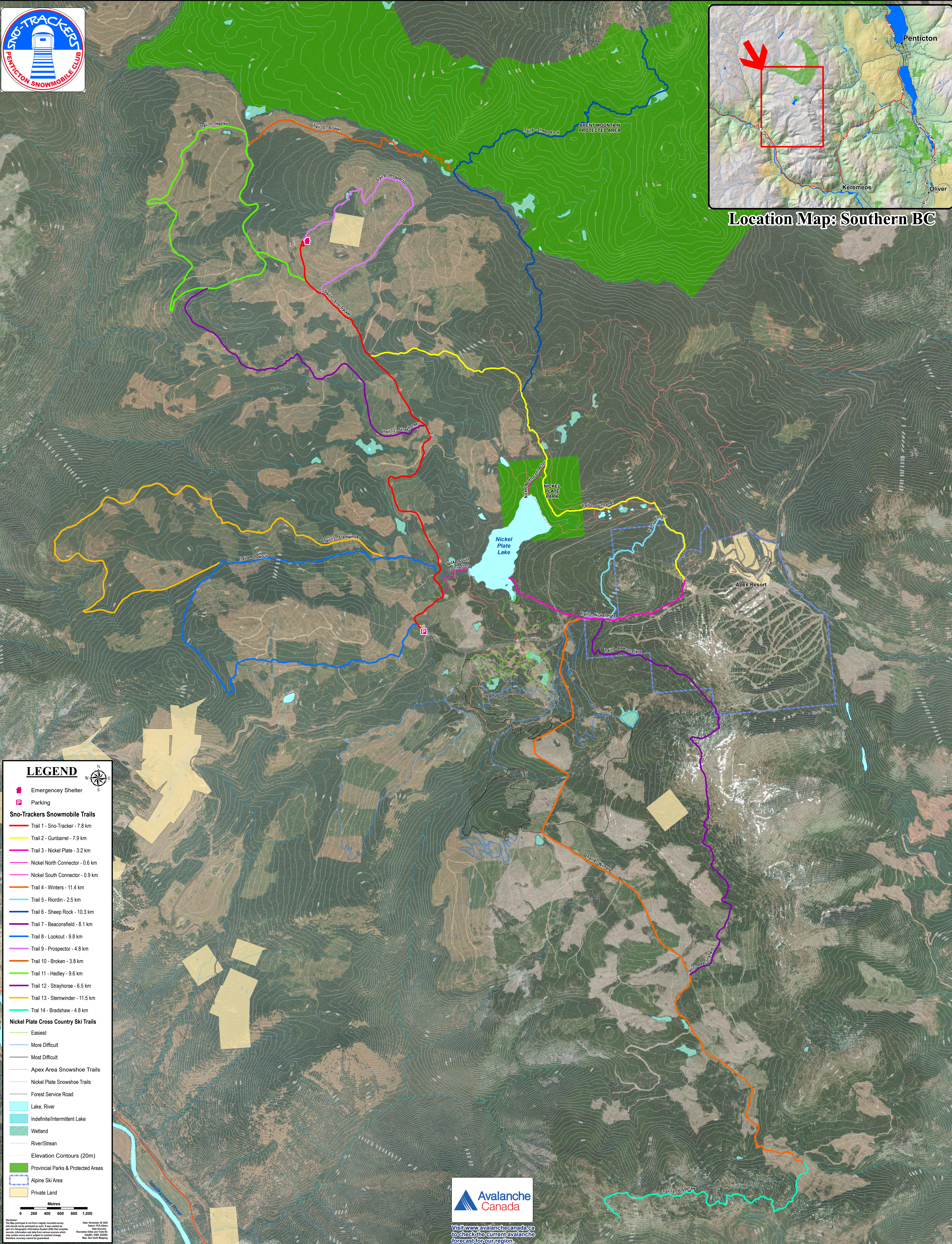


# Sno-Trackers Snowmobile Club, Apex Area



Location Map: Southern BC



**LEGEND**

- Emergency Shelter
- Parking
- Sno-Trackers Snowmobile Trails**
  - Trail 1 - Sno-Tracker - 7.8 km
  - Trail 2 - Gunbarrel - 7.9 km
  - Trail 3 - Nickel Plate - 3.2 km
  - Nickel North Connector - 0.6 km
  - Nickel South Connector - 0.9 km
  - Trail 4 - Winters - 11.4 km
  - Trail 5 - Riordin - 2.5 km
  - Trail 6 - Sheep Rock - 10.3 km
  - Trail 7 - Beaconsfield - 8.1 km
  - Trail 8 - Lookout - 9.8 km
  - Trail 9 - Prospector - 4.8 km
  - Trail 10 - Broken - 3.8 km
  - Trail 11 - Hedley - 9.6 km
  - Trail 12 - Strayhorse - 6.5 km
  - Trail 13 - Stewinder - 11.5 km
  - Trail 14 - Bradshaw - 4.8 km
- Nickel Plate Cross Country Ski Trails**
  - Easiest
  - More Difficult
  - Most Difficult
- Apex Area Snowshoe Trails**
- Nickel Plate Snowshoe Trails**
- Forest Service Road
- Lake, River
- Indefinite/Intermittent Lake
- Wetland
- River/Stream
- Elevation Contours (20m)
- Provincial Parks & Protected Areas
- Alpine Ski Area
- Private Land

Metres  
0 200 400 600 800 1,000



Visit [www.avalancheCanada.ca](http://www.avalancheCanada.ca) to check the current avalanche forecast for our region.

Disclaimer: This map is prepared from a highly detailed survey and should not be prepared as such. It was created as a part of Geographic Information System (GIS) data. Accuracy, information and data from various sources which may be used in this map is subject to correction. Members' accuracy cannot be guaranteed.