



MADEWELL STRATEGIC SOLUTIONS
THE RIGHT SOLUTION EVERY TIME

ENGINEERING
FILTRATION
SOLUTIONS

The food processing market is ready for a new type of in plant filtration system. With the transition from chlorine to peracetic acid the FDA has put tight restrictions on the amount airborne PAA. The solution? The system which emphasizes Industrial-scale filtration production for both in plant and air quality applications.

The MSS-500 is capable of changing the air quality landscape with a control system design unlike any other. A highly efficient, software driven design coupled with proprietary remote monitoring capabilities offers a cost-effective option to increase revenues through greater air quality production.

MADEWELL STRATEGIC SOLUTIONS LLC
(479) 966-0015



Generate **Revolution**
With The **MSS-5000**
PAA Air Filtration System

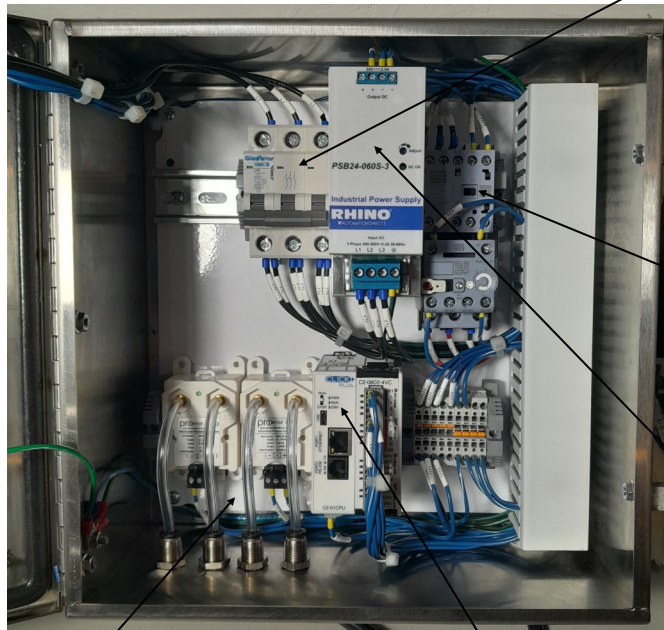
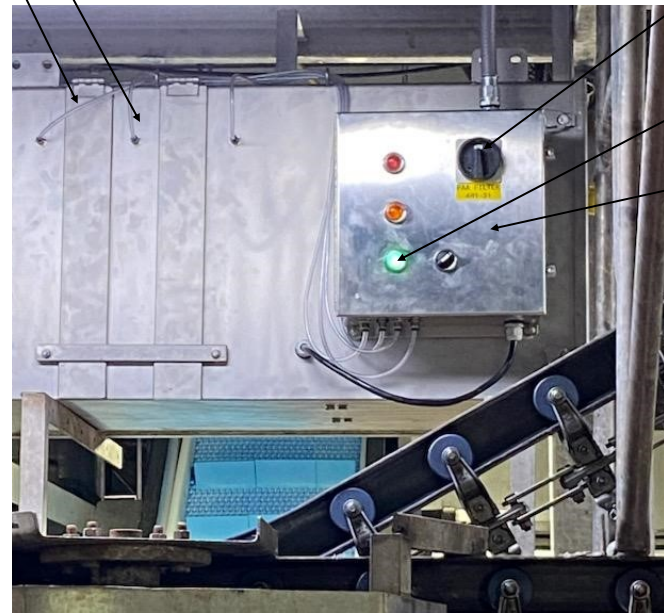
engineering
filtration
solutions



MADEWELL STRATEGIC SOLUTIONS
THE RIGHT SOLUTION EVERY TIME

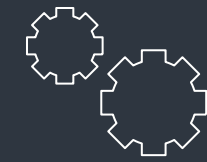
PO Box 867
Wolfeboro Falls, NH 03896
PH 904-553-6627

MSS-500 SOLUTION



CONTROL SYSTEM

The highly innovative MSS technology represents an evolutionary step in filtration system design and performance and enables operators of plant facilities to cost-effectively install the MSS-5000 filtration system.



CONTROL SYSTEM

The MSS-5000 smart software based control system learns the current condition of the filtration systems. This enables the control system to make the best control configuration decisions for each individual unit.

THE MSS-5000

- Tracks the condition of each filter.
- Based on filters condition the control system sends data to plant personnel and generator output fault codes



REMOTE MONITORING

The modbus to TCP/IP power control and monitoring system ensures maximum filtration generation at the highest availabilities while at the same time supporting comprehensive remote monitoring and real-time control including full diagnostic and data collection capabilities. The system's unique modular design, coupled with the use of field-proven components and ISO 9000 manufacturing standards, ensures the highest level of reliability and cost-effective operation of the MSS-5000 control systems entire service life.

SYSTEM COMPONENTS

- 1 FILTER HOUSING
- 2 FILTER PRESSURE SENSORS
- 3 3 PHASE POWER SWITCH
- 4 FILTER SYSTEM RUNNING
- 5 SYSTEM CONTROL PANEL
- 6 MAIN CIRCUIT BREAKER
- 7 MAIN BLOWER CONTACTOR
- 8 24VDC POWER SUPPLY
- 9 MAIN PLC
- 10 FILTER SENSOR CONTROLLERS

COMPATIBLE WITH SMART PLANT TECHNOLOGY