

A SPECTRUM OF SERVICES

Autism Resources in South Carolina

Stephanie Turner LMSW, MPH, BCBA,
Autism Division Director SC DDSN

5

Agenda

- 1 Ethical Considerations
- 2 Diagnostic Assessments
- 3 EI
- 4 Case Management
- 5 CS and ID/RD Waivers
- 6 RBHS
- 7 DSS Services
- 8 PCSC Waiver
- 9 ABA
- 10 Mobile Crisis
- 11 Psychiatric Hospital
- 12 Other Resources

6

Disclaimer

Materials presented today are not comprehensive. This training does not take the place of reading policy and procedure manual(s) and terms and conditions of individual provider agreements/contracts. Prior to treatment, all beneficiaries must meet the eligibility and medical necessity criteria for that service.

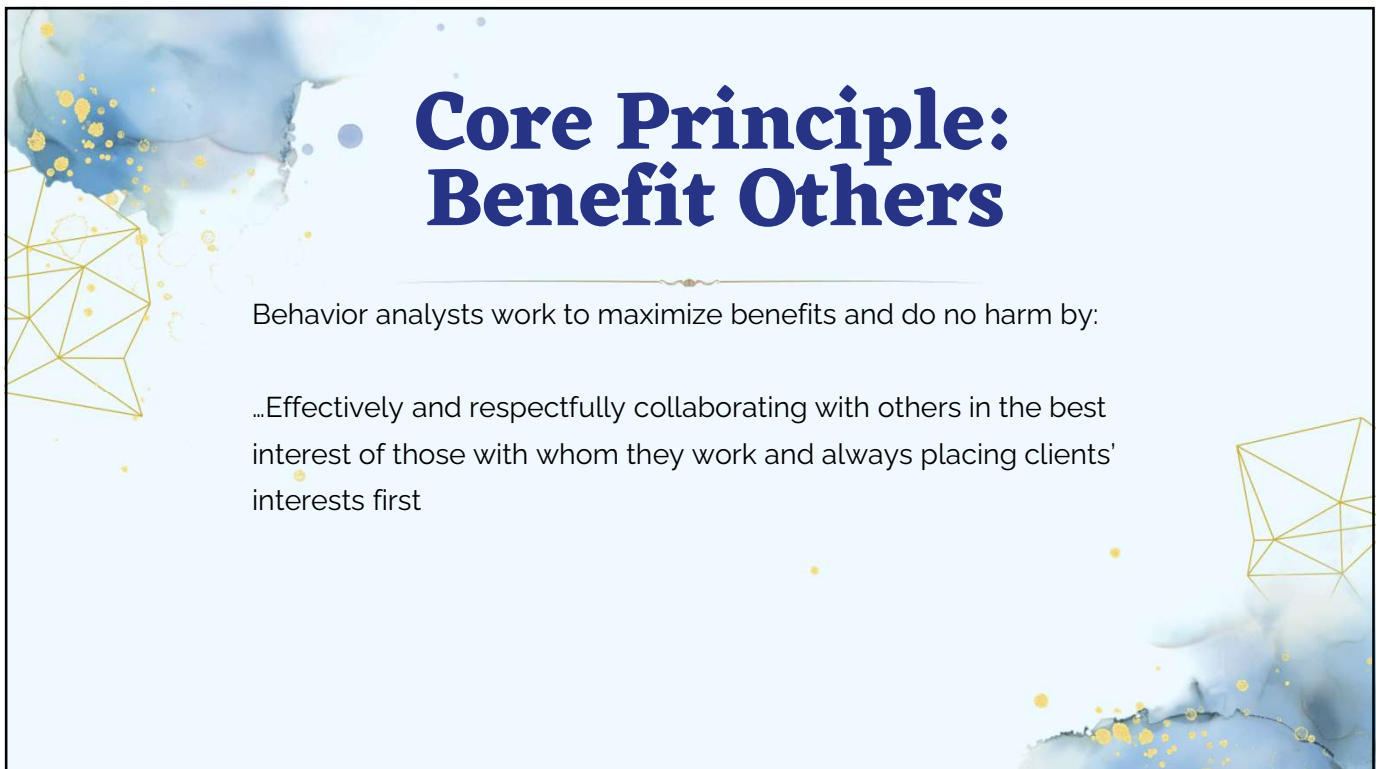
7

ETHICAL CONSIDERATIONS

8



9



10

Responsibility as a Professional (1.05)

Behavior analysts practice within their identified scope of competence

They require appropriate study, training, supervision, consultation, and co-treatment in new areas.

Otherwise, they refer or transition to an appropriate professional.

11

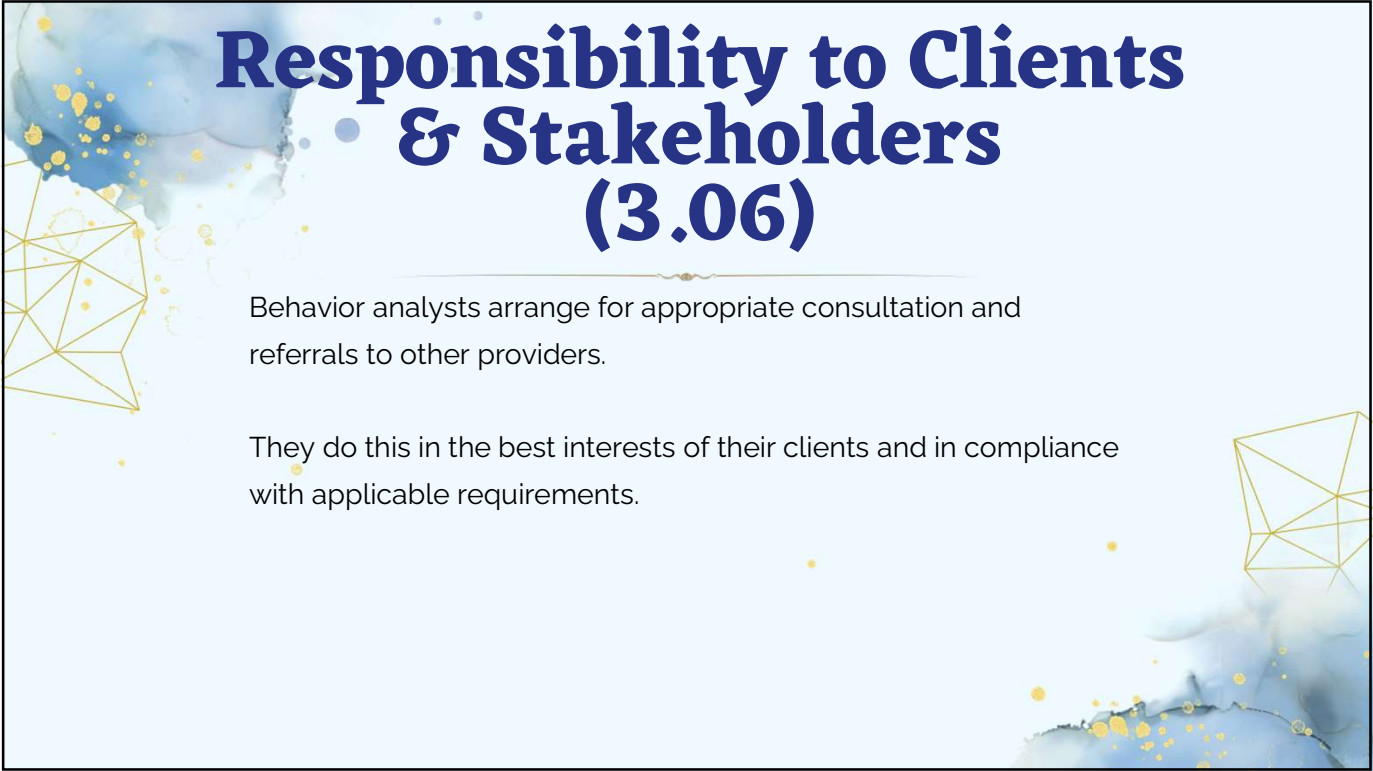
Responsibility in Practice (2.01 and 2.10)

Behavior analysts prioritize clients' rights and needs in service delivery.

They provide effective treatment based on scientific evidence.

They collaborate with colleagues and address conflicts in the best interest of the client.

12



Responsibility to Clients & Stakeholders (3.06)

Behavior analysts arrange for appropriate consultation and referrals to other providers.

They do this in the best interests of their clients and in compliance with applicable requirements.

13



DIAGNOSTIC ASSESSMENTS

14

Three Main Options

Developmental Evaluation Centers

Upstate - PRISMA
Midlands - PRISMA
Lowcountry - MUSC

Carolina Autism Resource Evaluation Centers

Upstate
Midlands
Lowcountry
Pee Dee

Local School District

Evaluate to determine if individual meets qualifications for school-based services.

15

Treatment Options for ASD

A. Medication

B. 27 Evidence-Based Practices for Individuals Diagnosed with ASD:

1. Antecedent-Based Intervention
2. Cognitive Behavioral Intervention
3. Differential Reinforcement
4. Discrete Trial Teaching
5. Exercise
6. Extinction
7. Functional Behavior Assessment
8. Functional Communication Training
9. Modeling
10. Naturalistic Intervention
11. Parent Implemented Intervention
12. Peer Mediated Instruction/Intervention
13. Picture Exchange Communication System
14. Pivotal Response Training
15. Prompting
16. Reinforcement
17. Response Interruption/ Redirection
18. Scripting
19. Self-Management
20. Social Narratives
21. Social Skills Training
22. Structure Play Group
23. Task Analysis
24. Technology Aided Instruction/ Intervention
25. Time Delay
26. Video Modeling
27. Visual Support

17



18

Early Intervention

Population:

- BabyNet = Infants and toddlers under three years of age with/at risk of developmental delays
- DDSN EI = children 3-6 with a diagnosis of autism

Place of Service

- Natural Environment

19

Early Intervention

BabyNet Eligibility Line:

1-877-621-0865

BabyNet Referral:

<https://babynet.scdhhs.gov/prebabynet/>

Over age 3?

Joyce Kimrey at DDSN

jkimrey@ddsn.sc.gov

803-898-9145



20

CASE MANAGEMENT

22



Case Management


Services Include:

- Assessment
- Case Management Plan
- Referral and Linkage
- Monitoring and Follow-Up

Place of Service:
No restriction except if an individual is being treated at an inpatient facility in which case services may be provided only during the last 90 days to assist with discharge.

Directory:
www1.scdhhs.gov/mtcmdirectory/

23



CS & ID/RD WAIVERS

25

Waiver Services

Respite Services

Allows families or caregivers to handle emergencies and personal situations or take a break.

At-Home Supports for Independent Living

- Access to the community
- Paying Bills,
- Shopping for groceries
- Accessing Medical Care
- Other personal assistance.



26

Waiver Services

Employment Services

- To obtain and sustain employment.
- Job coaching,
- Work enclaves,
- Mobile work crew opportunities.

Adult Day Care Services

To provide a safe and healthy environment to develop social and personal care skills for more independent and productive lives.



27

Waiver Services

Individual and Family Support

To assist individuals and families who incur additional expenses due to the individual's disability.

Community Training Home (CTH)

To live in a homelike environment under the supervision of qualified and trained staff.



28

REHABILITATIVE BEHAVIORAL HEALTH SERVICES

30

RBHS

Population

Beneficiaries who are dually diagnosed in addition to Autism Spectrum Disorder (ASD)

Directory

scdhhs.gov/private-rbhs-provider-directory



31

RBHS

Services Include

- Assessment & Screening Services
- Substance Abuse Treatment Services
- Medical Services
- Core Treatment Services
 - Individual Psychotherapy
 - Group Psychotherapy
 - Family Psychotherapy
 - Crisis Management



32

RBHS

Psychosocial Rehabilitation Services

- Independent living skills,
- Personal living skills
- Interpersonal skills



33

RBHS

Behavior Modification (21 and under)

- Redirection and modeling.
- Promoting healthy coping skills, adaptive interactions with others and appropriate responses to environmental stimuli.
- Altering existing behaviors and acquiring new behaviors.



34

RBHS

Family Support (21 and under)

- Equipping families/caregivers with coping skills.
- Educating families/caregivers to advocate effectively.
- Providing families/caregivers information and skills to be an active part of the treatment team, and
- Modeling skills for the family/caregivers.



35

DSS SERVICES

37



Homebuilders

Families with children/youth 0-17 who are imminent risk of out-of-home placement or who are in placement and cannot be reunified without intensive in-home services.

38



Brief Strategic Family Therapy (BSFT)

Families with children/ adolescents 6-17 who display, or are at risk of developing problem behaviors, antisocial peer associations, bullying, truancy, or substance use.

39



Functional Family Therapy (FFT)

Children/Adolescents 11-18 years old who experience problem behaviors such as conduct disorder, violent acting-out, and substance abuse

40

PALMETTO COORDINATED SYSTEM OF CARE WAIVER

42

PCSC Waiver

Population

Youth aged 21 or under with serious emotional disturbance or substance use disorders who are at risk of out of home placement

Services

- High Fidelity Wraparound
- Respite
- Individual Directed Goods and Services

Apply

Coc.sc.gov/apply/how-to-apply



43

ABA

44

ABA

Services

- Annual Assessments,
- Monthly Family Training,
- Weekly ABA Treatment,
- Weekly Case Supervision
- Group Treatment

Provider Database

https://ddsn.sc.gov/sites/ddsn/files/PublicDocuments/ABA_Providers.xlsx



45

MOBILE CRISIS

47



Mobile Crisis

State-wide Mobile Crisis Service

24/7/365

- 833-364-2274
- De-escalates the crisis on the phone, offer walk-in, or dispatches Mobile Crisis team to your location

Population

Adults and Children

Place of Service

All 46 Counties

48

PSYCHIATRIC HOSPITALS

50

Psychiatric Hospitals

Population

- Beneficiaries ages under 21 and
- 65 and older, dually diagnosed in
- addition to ASD

Services Include

- Psychiatric Evaluations
- Psychological Evaluations
- Individual Psychotherapy
- Group Psychotherapy
- Family Psychotherapy
- Medical Services
- Crisis Management



51

Resources

DDSN

ddsn.sc.gov

Medicaid

scdhhs.gov

ASD

cdc.gov/autism

Statewide Independent Living Council

scsilc.com/wp

53

Resources

DDSN Intake

1-800-289-
7012

Medicaid Beneficiary Resource Center

1-888-549-
0820

First 5

first5sc.org

SC Parents

search.scparents.org

54

Resources

Family Connection

[familyconnection
sc.org](http://familyconnectionsc.org)

Voc Rehab

scvrd.net

Disability Rights

[disabilityrights
sc.org](http://disabilityrightssc.org)

OSES

803-734-6771

55

Resources

HIPP

1-888-289-0709
Option 5
Option 4

Free Communication Tablet

scedp.sc.gov/services/apply-now

Family Focused Behavioral Interventions

ABC
Circle of Security
Triple P
PCIT

CYSHCN

Anna Bleasdale
803-898-0789

56

Resources

able SC

www.able-sc.org

Assistive Tech Program

803-935-5263

Palmetto ABLE Savings Program

palmettoable.com

57

Resources

**Big Red
Safety Box**

National Autism
Association

**Lowcountry
Autism
Foundation**

LAfinc.org

**Project
Lifesaver**

ProjectLifesaver.org

58

Registered Apprenticeship for RBTs


First of its kind in the nation.

Each apprentice is eligible for reimbursement for education and professional growth up to \$4,000 and may also request up to \$1,000 in supportive service funding.

Interested in becoming an apprenticeship site?
Contact the Apprenticeship Consultant for your County:
www.apprenticeshipcarolina.com/contact.html



60



Questions?

Stephanie Turner, LMSW, MPH, BCBA
Autism Division Director

✉ Stephanie.Turner@ddsn.sc.gov
☎ 803-898-9639
📍 3440 Harden Street Ext., Columbia, SC 29203
🌐 www.ddsn.sc.gov

61

THANK YOU



62