



---

# WELCOME TO

*The*  
**OLD MILL**  
No. 11



**DROMAHAIR IRELAND**

---





---

# CONTENTS

THE OLD MILL NO. 11



## WELCOME!

A message from your hosts

1



## IMPORTANT INFO

Emergency Contacts  
Wifi and Access Information

2



## THE SPACE

House Rules  
Helpful Information

3



## LOCAL TIPS

Nearby Attractions  
Day Trips  
Our Favorite Restaurants

4

---



## MEET YOUR HOSTS

*Jasyn & James*

## A WARM WELCOME

# FÁILTE

### DEAR GUEST

We hope you enjoy your stay at The Old Mill No.11. This information booklet contains general information regarding the apartment and the surrounding area but if you have any queries or issues, please don't hesitate to contact us at 001-251-459-4532 or by email at [james@averadesign.com](mailto:james@averadesign.com)

There are 17 units in the complex and they are a mix of owner occupied/long and short-term rental so please be mindful of other residents.

The buildings are original mill warehouses built as part of a railway complex in the 1880's and are a fine example of late nineteenth century railway architecture. The railway station for the SLNCR (Sligo Leitrim Northern Counties Railway) can be seen from the front door of the apartment and the Mill Master's house is on your right as you leave the complex. At present the old railway line is being developed as part of the Sligo Greenway, a walking/cycling trail which will run from Collooney in Sligo to Enniskillen.

Dromahair village is approximately 1km from the apartment and there you will find two convenience stores (Gala and Centra) which stock many essential items.

There is a small coffee shop in the village (Village Tearooms) and two pubs (The Blue Devon and The Woodside Inn). Conveniently located approximately 200m from the apartment (beside the Mill Master's house) is The Riverbank Restaurant and The Clubhouse Gastropub which serve lunch and dinner.

The Clubhouse serves alcohol during usual pub hours (10.30am - 11.30pm Mon - Thur, 10.30am - 12.30am Fri & Sat, 12.30pm - 11pm Sun)

We hope you love Dromahair as much as we do and enjoy your stay so much that you'll want to come back. Please be sure to sign the guestbook and tell us about your experience.

#### Contact me:

001-251-459-4532

[james@averadesign.com](mailto:james@averadesign.com)

*Jasyn & James*

ENJOY YOUR STAY

# EMERGENCY

*Contacts*



## YOUR HOSTS

James Avera  
T: 001-251-459-4532  
E: james@averadesign.com



## MEDICAL EMERGENCY

CALL 999 or 112  
in case of  
emergencies

Sligo University Hospital  
T: (071) 917-1111  
A: Sligo F91 H684



## PHARMACY

Dromahair Pharmacy  
T: (071) 913-4134  
A: Church Road Dromahair F91 AH29



## DOCTOR GERRY BALLANTINE

T: (071) 916-4967  
A: 8 Churchfield Dromahair F91 V2X8



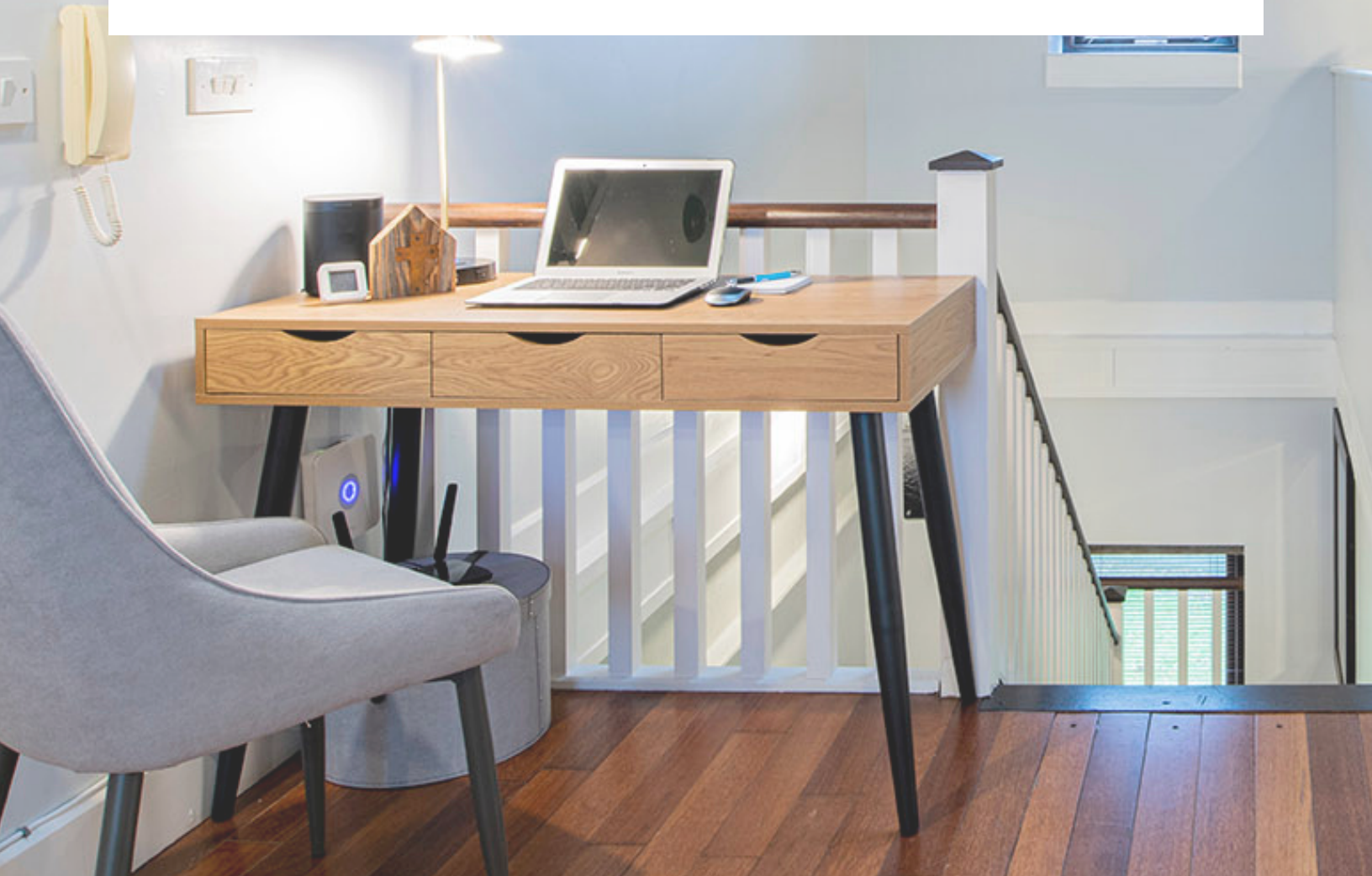
## AUTOMOTIVE CARE

Mark Scott Auto Repairs  
T: (071) 985-6000  
A: Castle St Manorhamilton



# BE OUR GUEST! WIFI

ALL INFO IS PROVIDED IN THE PRINTED  
MANUAL ON THE DESK



WE HOPE YOU ENJOY YOUR STAY



# HOUSE RULES

## A FRIENDLY REMINDER



### NO SMOKING

Please kindly do not smoke inside our home. You may smoke in the garden



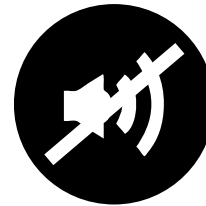
### NO PARTIES

No parties are permitted



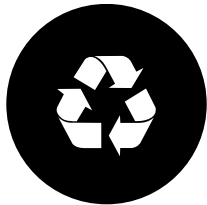
### NO PETS

We love animals however pets are currently not allowed on the property



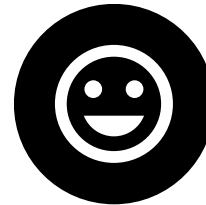
### QUIET TIME

Please respect our neighbors by keeping the noise down after 9pm



### PLEASE RECYCLE

Help us help the planet by recycling



### ENJOY YOURSELF!

We hope you enjoy your stay. Thank you for leaving the place as you found it

THANK YOU FOR UNDERSTANDING

## GETTING COMFORTABLE

# HOUSE GUIDE

Below are a few helpful tips and instructions on how to make your stay more comfortable and enjoyable!



### TEMPERATURE

There are electric radiators in all rooms (excluding the bathrooms), which are individually controlled. Please be sure to turn off at the wall switch when not in use, or when you leave the apartment. There is a temperature conversion chart in the back of this manual



### TVS & NETFLIX

There are smart TVs in the Living room, both bedrooms and in the reading nook, with Netflix and Amazon Prime. You may select the "terrestrial" option to watch free, local channels with the digital antenna. You may also connect to the apps installed on each TV. Channel 4 and RTE are both great entertainment.



### LAUNDRY

The apartment has a washer/dryer combo beneath the sink to the left. It can handle small loads daily. The process is rather lengthy and clothes sometimes come out damp. There is a drying rack located at the end of the kitchen counter toward the dining area end.



### TRASH

There is a general waste bin located at the end of the counter near the microwave. When bin is full, it can be taken to the communal bin in the bin shed located in the centre of the complex. The communal bin is always kept locked (you have been provided with a key) to deter vermin so please ensure that you lock it after use for everyone's safety.

There are appliance instruction manuals in the back of this booklet



## GETTING COMFORTABLE

# APPLIANCES

The apartment has the following appliances available and the instructions for most of these can be found at the back of this information booklet:

- Electric Oven & Cook Top
- Fridge/Freezer
- Dishwasher
- Microwave
- Toaster
- Pod Coffee Machine (Nespresso Vertuo Pods only)
- Drip Coffee Machine
- Counter top ice maker (There is a bin in the freezer, you may run several cycles to fill it up)
- Kettle
- Washer/Dryer
- Iron & ironing board (located in the wardrobe in main bedroom)
- Smart TV (4 total)
- Alexa Hub (on top of microwave)
- Alexa Speaker (In main bedroom)
- Electric Fireplace (remote on the table) \*\*\* PLEASE DO NOT LEAVE ON FOR EXTENDED PERIODS OR WHILE AWAY
- Sonos Speakers (In the Living Room, you may use the iPad in the desk drawer to control the music through the Sonos app)
- Hairdryer
- Modem (located under the desk)
- Cordless Vacuum Cleaner
- Dehumidifier (located under the stairs)

The Kitchen Alexa hub has a built in camera. If you would like to disable it during your stay, simply slide the camera cover over to the right. PLEASE re-enable the camera upon departure. There is also a ring camera on the table in the reading nook. You may turn it around to face the wall during your stay, but PLEASE remember to point it back toward the door when you depart.

Most of the lights have smart bulbs. They may blink when you turn them on, if so you will need to turn the switch on and off again to reset them. Upon departure, please leave all of the sconces and the floor lamp in the living room ON. All other lights can be turned off.

# INFORMATION

## ON HEATING WATER

Hot water for the showers and sinks is provided by an immersion heater.

The heater is on a timer which is set for early morning and evening, this should provide ample hot water for the day. If you need to override the timer, the switch is in the closet across from the main bathroom. Simply click the BOOST option and it will begin heating for another hour or so. The water main is also located in this closet. If there is an emergency that involves water in the unit, you may turn it off here.



## TIPS FOR

# YOUR STAY

*Additional information to help make your stay as comfortable as possible*

### LAUNDRY

If you need to wash towels, bed linens or large loads, there is a pay per use laundry facility at the Gala in the village. It provides detergent, but we use our own (beneath the sink). If you wash the linens and towels, please use a bleach tablet (also beneath the sink).

### VENTILATION

There is a dehumidifier in the area under the stairs which should be used if you find yourself needing to dry outer clothes or shoes. Please don't hang anything from the radiators.

### SAFETY

The apartment is equipped with one smoke/carbon monoxide alarm for your safety. There are two fire safety blankets (one downstairs in the reading nook and one in the cabinet beneath the kitchen sink).

There is a small fire extinguisher and first aid kit under the sink as well. If there are any issues with regards to safety, please don't hesitate to contact us at 001-251-459-4532

**PLEASE DO NOT BURN CANDLES**

### READING NOOK

Situated downstairs is a quiet relaxing area where you can read/relax away from the hustle and bustle of the open plan living area. The switches to operate the heater are on the bottom right of the heater. You may select flame only or flame and heat.

### OUR FAVORITE STORES

Tesco (groceries) - Sligo

TK Max (Clothing, home goods, etc) - Sligo

Tesco Super Store (groceries and more) - Carrick-On-Shannon

Aldi (groceries) - Carrick-On-Shannon

SuperValu (groceries) - Manorhamilton

### TEMPERATURE CHART

19 °C. - 66.2 °F

20 °C. - 68.0 °F

21 °C. - 69.8 °F

22 °C. - 71.6 °F

23 °C. - 73.4 °F





---

**E X P L O R E !**

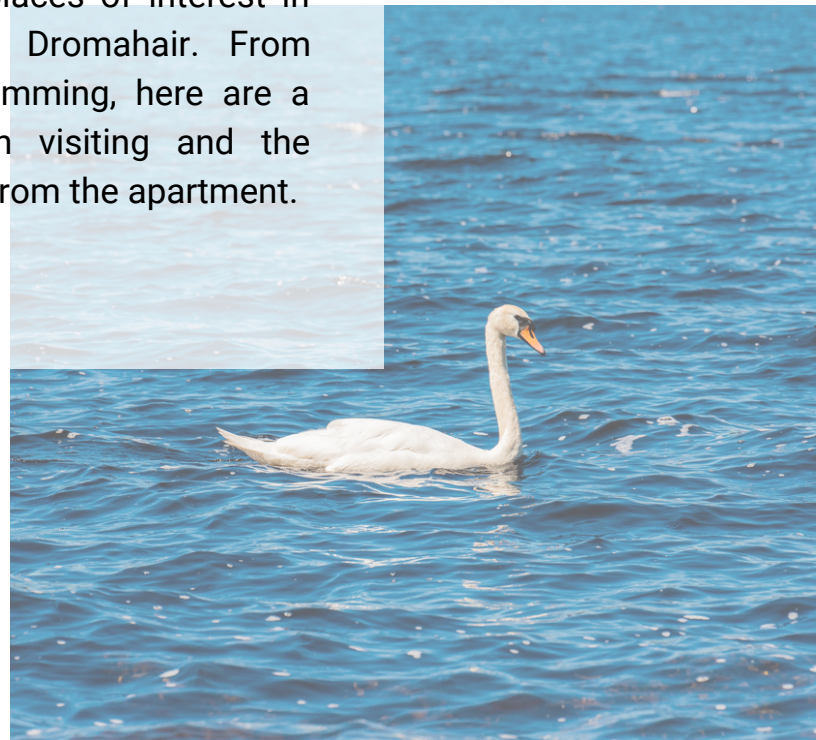
**LOCAL  
THINGS**

*to do & see*

**THE OLD MILL NO. 11**

---





# GET OUT AND

*Explore!*

There are many places of interest in the area around Dromahair. From hiking to sea swimming, here are a few places worth visiting and the distance they are from the apartment.

- Creevlea Abbey 2.2km
- Dooney Rock Forest 12km
- Sliswood Forest 10km
- Hazelwood Forest 17km
- Parkes Castle (on Lough Gill) 13km
- Wild Rose Waterbus (boat tour of Lough Gill) 13km (departs from Parkes Castle)

- O'Rourkes Table (mountain walkway with steps) 9.5km
- Aura Heated Outdoor Pool Drumshanbo 32km
- Glencar Waterfall 23km
- Acres Lake and floating boardwalk 32km
- Rosses Point Beach 25km
- Strandhill Beach 25km (no swimming permitted)
- Sligo town 17km

This is not an exhaustive list, and more information can be found on both the Sligo and Leitrim tourism websites ([sligotourism.ie](http://sligotourism.ie) and [leitrimtourism.com](http://leitrimtourism.com)).



# PLACES TO SEE

Just a couple short hours from Dromahair



## GALWAY

*County Galway*

Don't make a plan when you go walkabout here (few Galwegians do). Instead, go where the mood takes you. That may be an independent bookshop such as Charlie Byrne's; it may be a pub, an aquarium, or a city museum whose upper floors reveal a breathtaking view of the River Corrib. There's a wealth of choice on tap!



## THE CLIFFS OF MOHER

*County Clare*

The Cliffs of Moher are entirely vertical and the cliff edge is abrupt. On a clear day, the views are tremendous, with the Aran Islands etched on the waters of Galway Bay. From the cliff edge, you can just hear the booming far below as the waves crash and gnaw at the soft shale and sandstone. With a due-west exposure, sunset is the best time to visit.



## SLIEVE LEAGUE CLIFFS

*County Donegal*

At nearly three times the height of the Cliffs of Moher, the Slieve League Cliffs offer incredible views from their peaks. Are you ready to scale their heady heights?



## DERRY

*Northern Ireland*

It's cosmopolitan, creative and steeped in history, but it's the unique combination of warmth and wit that makes Derry-Londonderry so special. Look over to the city's Bogside area and you'll see history literally written on the walls in those famous murals. Traditional music spills out onto the streets from cozy pubs, museums tell stories of times past and people still celebrate ancient festivals.



ALL WITHIN 30 MINUTES FROM US

# PLACES TO EAT



## THE RIVERBANK

*At the edge of the property*

The Riverbank Restaurant is a popular dining destination and recipient of numerous culinary and service awards. Its use of fresh local produce, focus on flavour and professional staff have put this North Leitrim restaurant on the map.

**Call:** 353 71 916 4934

**Website:** [www.riverbankrestaurant.ie](http://www.riverbankrestaurant.ie)

## THE OARSMAN

*Carrick-On-Shannon*

Seven generations of proud hospitality keeping in Carrick on Shannon. A tradition stretching back to 1781. The Oarsman is a gathering place celebrating the region's finest. The perfect place to enjoy delicious food, wine, craft beer & spirits.

**Call:** 353 71 962 17339

**Website:** [www.theoarsman.com](http://www.theoarsman.com)



## COACH LANE RESTAURANT

*Sligo City*

BEST STEAK EVER! A family business which was established in 1994, located in the heart of idyllic Sligo. First time visitors can be sure of a memorable dining experience in one of Ireland's leading restaurants.

**Call:** 353 71 916 2417

**Website:** [www.coachlanesligo.com](http://www.coachlanesligo.com)

## FIDDLERS CREEK RESTAURANT & BAR

*Sligo City*

Fiddlers Creek situated in the heart of Sligo by the Garavogue River serving fantastic food and drink for almost 25 years!

**Call:** 353 71 914 1866

**Website:** [www.facebook.com/CreekFiddlers07](http://www.facebook.com/CreekFiddlers07)



---

# CHECK OUT

## Checklist



### **BEDDING & TOWELS**

#### PLEASE STRIP ALL BEDS

Pile all bed linens, towels, dish towels, etc at the foot of the stairs. ONLY IF YOU DONT WASH THEM YOURSELF.



### **FREEZER AND REFRIGERATOR**

Please toss out anything open and perishable. Please empty and turn off countertop ice maker. Please clean coffee pot and empty water from the Nespresso machine.



### **UPSTAIRS**

#### FINAL WALK THROUGH

Please make sure all appliances are turned off and both heating radiators are turned off at the wall. You may leave the floor lamp and wall sconces ON. If you disabled the camera on the Alexa device above the microwave, please reactivate it.



### **DOWNSTAIRS**

#### FINAL WALK THROUGH

Please make sure all radiators are turned off at the wall. The reading nook heater must also be turned off. Please turn the water heater OFF and close the valve to the water main in the closet across from the bathroom. If you turned the ring camera off, please turn it back on. SAFE TRAVELS!

---

THANK YOU

---