



Richard
Feibus

5706886185



Charlie
Ulmer

5705759093



COLDWELL BANKER
COMMERCIAL
TOWN & COUNTRY
PROPERTIES

Maplehurst Motel | 7323 State Rte 6

23 Room Hotel | Meshoppen, PA | \$695,000 (\$30,217/Room)



INVESTMENT HIGHLIGHTS

- Prime Location with High Traffic
- 50+ Parking Spots
- Public Sewer

EXECUTIVE SUMMARY

For Sale: Maplehurst Motel - A Charming Retreat on State Rte 6, Meshoppen

Welcome to Maplehurst Motel, a picturesque and inviting property nestled in the serene surroundings of Meshoppen, Pennsylvania. This charming motel, located at 7323 State Rte 6, is now available for sale, offering a unique investment opportunity for aspiring entrepreneurs or seasoned hospitality professionals.

Property Features:

Prime Location: Situated along the scenic State Rte 6, the Maplehurst Motel enjoys excellent visibility and convenient access for travelers passing through the area.

Tranquil Setting: Embrace the beauty of Meshoppen's natural landscapes with this motel, surrounded by lush greenery and peaceful countryside views.

Well-Maintained Establishment: The Maplehurst Motel boasts a solid reputation for providing comfortable accommodations and friendly service to guests over the years.

Variety of Rooms: With a diverse selection of well-appointed rooms, including single, double, and family suites, the motel caters to a wide range of travelers, ensuring a comfortable stay for everyone.

Outdoor Amenities: The property offers ample parking space for guests, allowing for easy accessibility.

Additionally, a relaxing outdoor sitting area provides a serene atmosphere for guests to unwind and enjoy the fresh air.

Manager's Quarters: The motel includes a spacious and private manager's quarters, providing a comfortable living space for the owner or onsite manager.

PROPERTY FACTS

Price	\$695,000	Lot Size	4.54 AC
Price Per Room	\$30,217	Building Size	6,820 SF
Sale Type	Investment	No. Rooms	23
Sale Conditions	Building in Shell Condition	No. Stories	1
Property Type	Hospitality	Year Built/Renovated	1965/2020
Property Subtype	Hotel	Parking Ratio	7.33/1,000 SF
Building Class	C	Corridor	Exterior

AMENITIES

- High Speed Internet Access
- Public Access Wifi

ROOM MIX INFORMATION

DESCRIPTION	NO. ROOMS	DAILY RATE	SF
Guest Room	23	\$74.00	-

TRANSPORTATION



AIRPORT

Wilkes-Barre/Scranton International Airport

63 min drive

34.4 mi

ZONING

Zoning Code

C (Commercial)

MAP OF 7323 STATE RTE 6 MESHOPPEN, PA 18630



ADDITIONAL PHOTOS



Exterior_-15



Exterior_-16





Double Suite_-4



Double Suite_-5

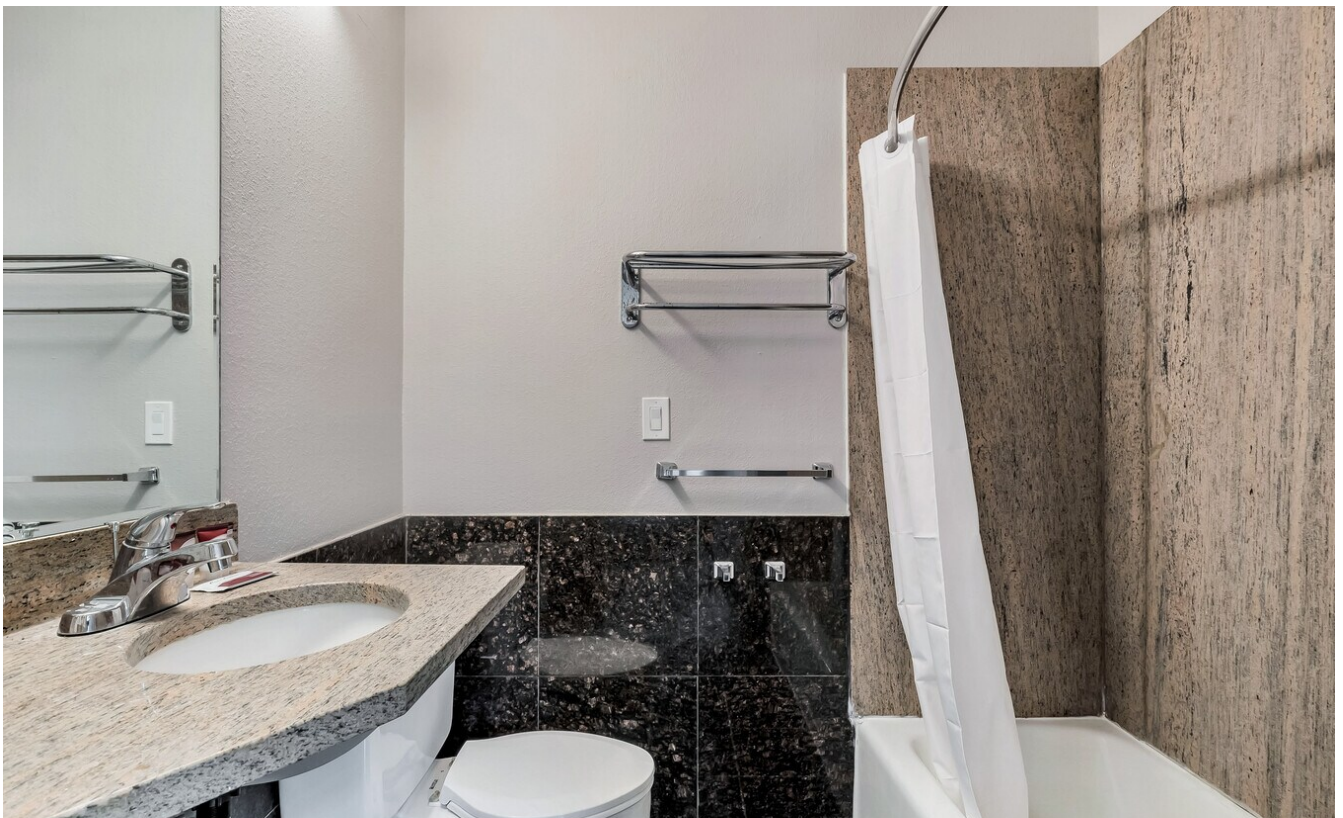




Double Suite_-6



Double Suite_-7





Double Suite_



Exterior_-8





Exterior_-9



Exterior_-10





Exterior_-11



Exterior_-12





Exterior_-13



Exterior_-17





Exterior_-18



Exterior_-20





Exterior_-21



Exterior_-22





Exterior_-23



Exterior_-24

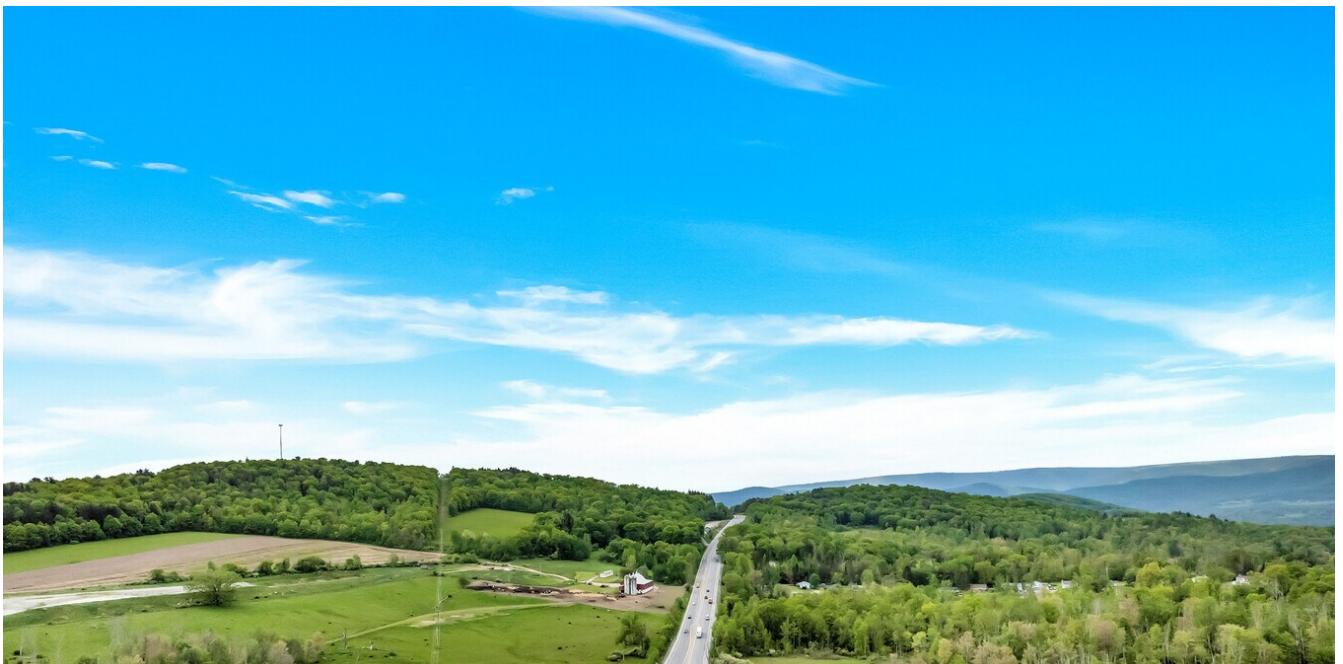




Exterior_-25



Exterior_-26





Exterior_-27



Exterior_-28

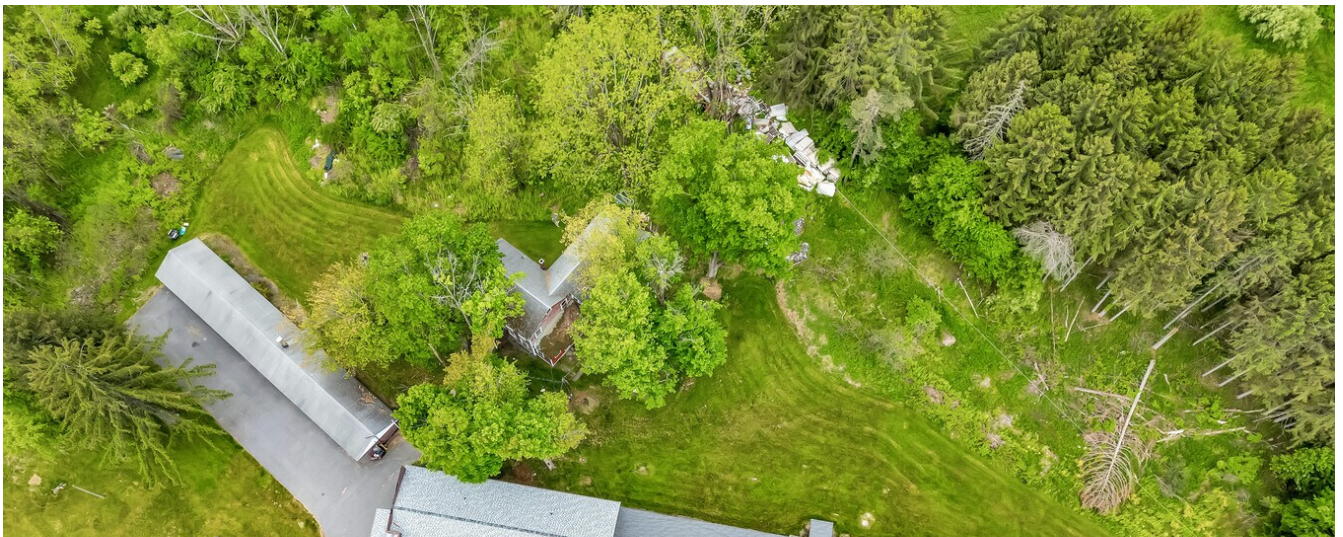




Exterior_-29



Exterior_-30





Exterior_-31



Exterior_-32

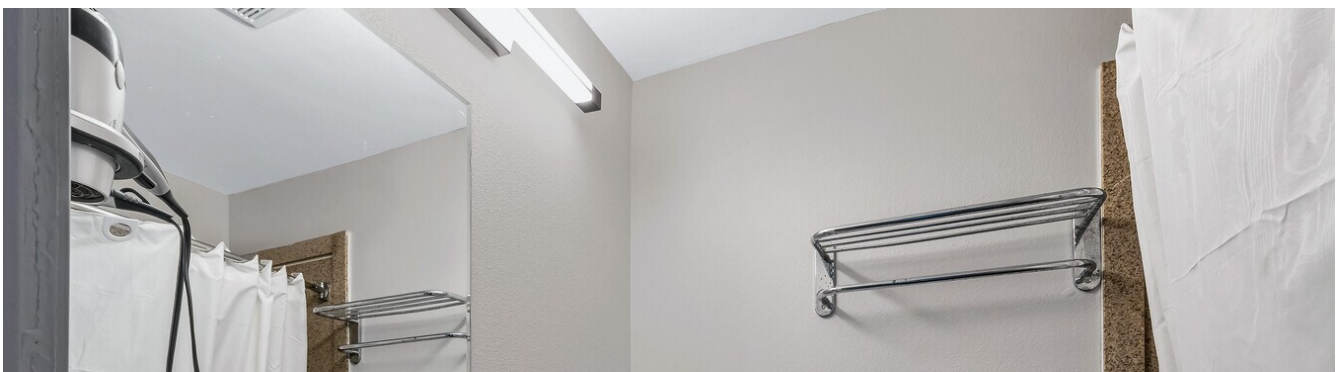




Exterior_-33



Exterior_





Jacuzzi Suite_-2



Jacuzzi Suite_-3

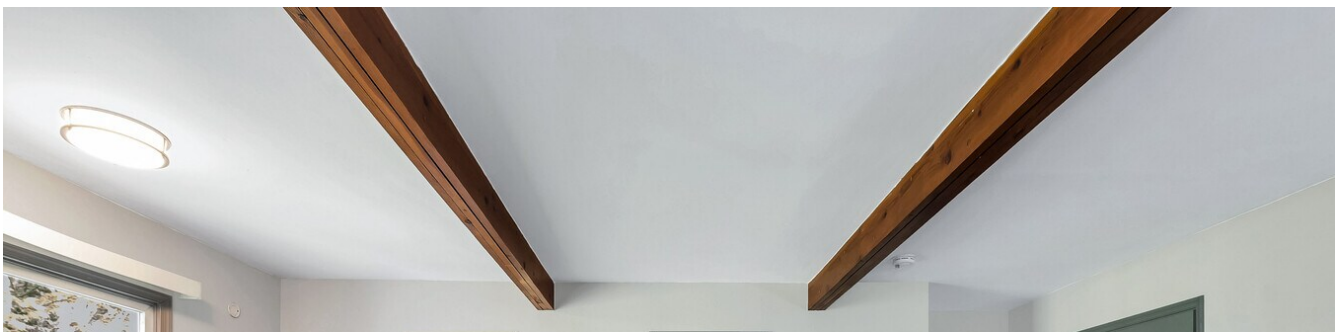




Jacuzzi Suite_-4



Jacuzzi Suite_-5





Jacuzzi Suite_-6



Jacuzzi Suite_-7





Jacuzzi Suite_-8



Jacuzzi Suite_

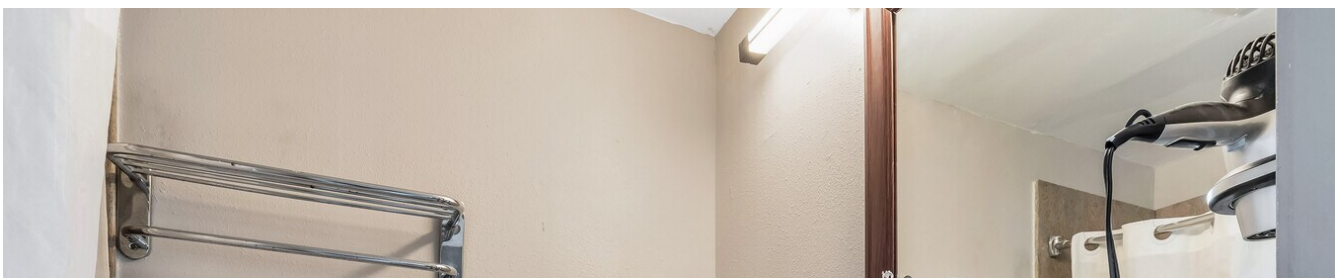




Office_-2



Office_

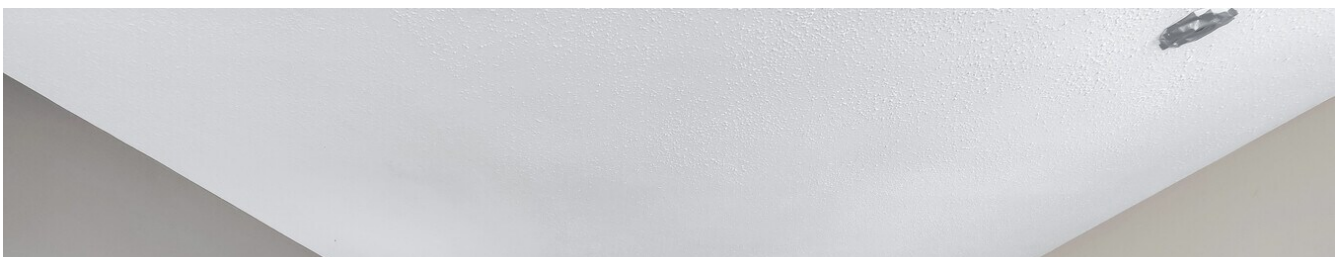




Single Suite_-2

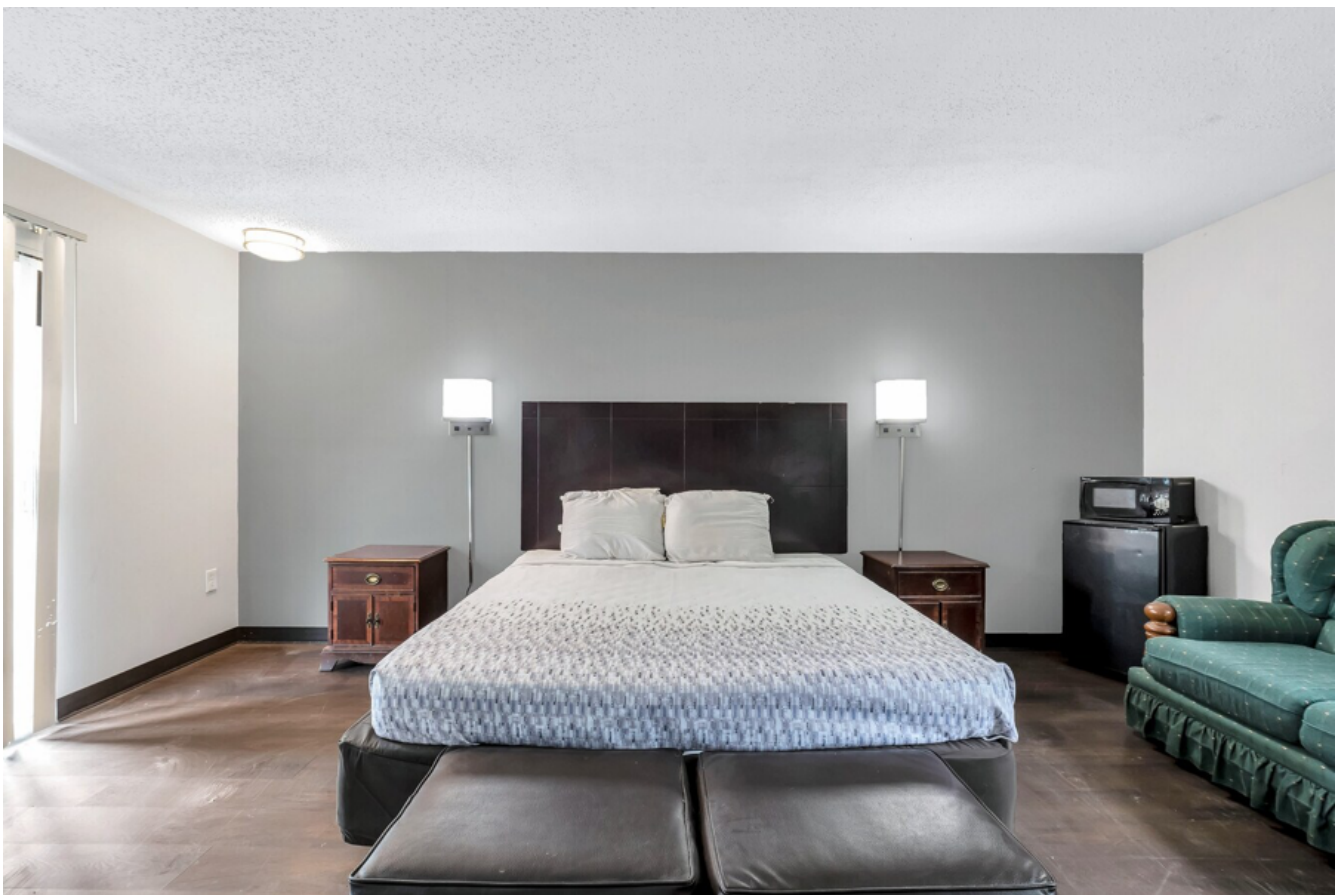


Single Suite_-3

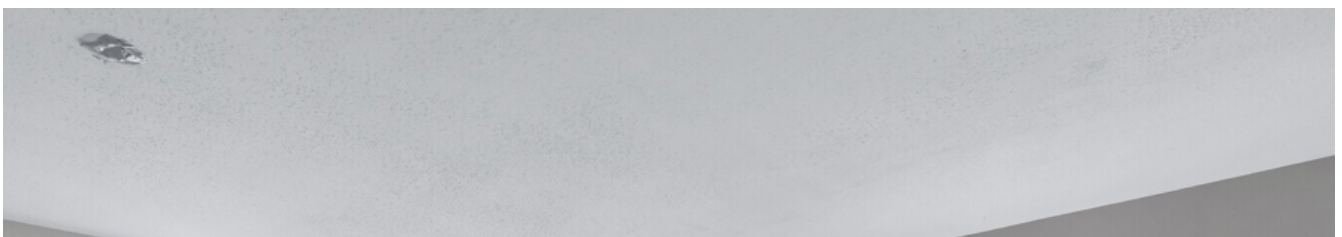




Single Suite_-4



Single Suite_-5

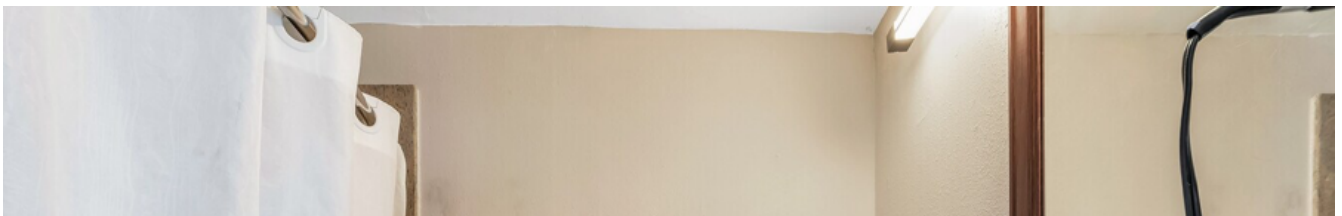




Single Suite_-6



Single Suite_-7





Single Suite_

Listing ID: 28555482

Date Created: 5/23/2023

Last Updated: 8/3/2023

Address: 7323 State Rte 6, Meshoppen, PA

The LoopNet service and information provided therein, while believed to be accurate, are provided "as is". LoopNet disclaims any and all representations, warranties, or guarantees of any kind.