



# IoT Connected Logistic Platform ( ICLP )

## Overview



We digitally run factories  
&  
connect them across the  
entire supply chain

**SupremeSoft**  
YOUR reliable solution provider

# INCREASING PRESSURE

Brands are under increasing pressure to improve their **products** and meet evolving **customer expectations**



**Better Quality**



**Lower Price**



**Faster Lead-Time**

# Problems Addresses to Connect the Supply Chain

#1 bottleneck for Industry 4.0 is the lack of real-time data

## Scattered Data



Data Generated from  
Hardware & Software



Data is Disconnected

## Lack of Digitalization



Too Much Paper-based  
Operations



Inaccurate Information

## Complex & Costly Supply Chains



100's – 1,000's of Suppliers



Strict Regulatory  
Requirements

# SCALABLE, SECURE, COST-EFFECTIVE, INTELLIGENT

BATTERY/LINE-POWERED  
INTELLIGENT GATEWAY



DISPOSABLE TAG



SHIPPER



CUSTOMS



ENTERPRISE SERVICE  
PROVIDER



USERS

● TAGS AT ANY SHIPMENT GRANULARITY



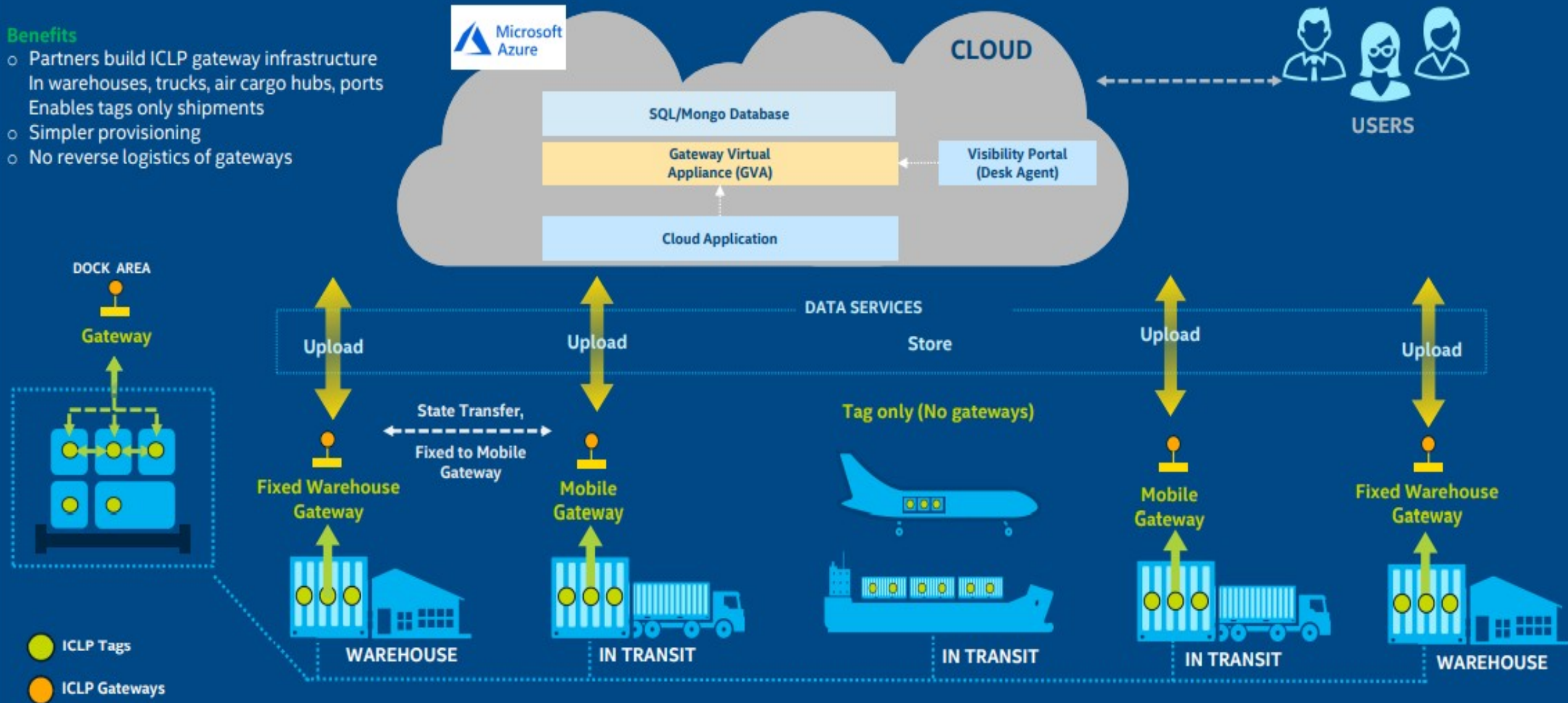
GATEWAYS GO WITH THE SHIPMENT

# ICLP - GATEWAY INFRASTRUCTURE [CUSTODY TRANSFER]

**Custody Transfer:** Ability of tags to move from one gateway to another gateway seamlessly

## Benefits

- Partners build ICLP gateway infrastructure in warehouses, trucks, air cargo hubs, ports
- Enables tags only shipments
- Simpler provisioning
- No reverse logistics of gateways



# ICLP DEVICE CERTIFICATIONS



Device certifications

Green (approved) Blue (In progress) Red areas (to be approved)

# ICLP - AIRLINE APPROVALS



More to come...

Top 25 Cargo Carriers 2018 - Scheduled FTK (m)			
Rank	+/-	Airline	2018
1	0	Federal Express	17,499
2	0	Emirates	12,713
3	+1	Qatar Airways	12,695
4	-1	United Parcel Service	12,459
5	0	Cathay Pacific Airways	11,284
6	0	Korean Air	7,839
7	+1	Lufthansa (1)	7,394
8	-1	Cargolux	7,322
9	0	Air China	7,051
10	+1	China Southern Airlines (1)	6,597
11	-1	Singapore Airlines	6,491
12	+3	Turkish Airlines (1)	5,890
13	-1	China Airlines	5,804
14	-1	AirBridgeCargo Airlines	5,511
15	-1	All Nippon Airways (1)	4,587
16	0	Atlas Air	4,553
17	+3	United Airlines	4,455
18	0	British Airways (1)	4,276
19	+2	Asiana Airlines	4,067
20	-3	Polar Air Cargo	4,038
21	+1	American Airlines	3,817
22	+1	Air France (1)	3,673
23	+2	KLM (1)	3,604
24	0	EVA Air	3,580
25	-6	Etihad Airways	3,471



# Lack of Digitalization – Tackled for by Supremesoft's ICLP

Our digital operations platform provides greater control through the power of real-time data



## ICLP – Digital Toolset Ready for Mass Adoption

 <p>Free MES to Digitize Operations</p>	 <p>Plug-and-Play Toolset</p>	 <p>1-Day Rapid Installation</p>
--	--	---

# Complex & Costly Supply Chains – Tackled by Supremesoft’s ICLP

ICLP leverages real-time supply chain data to provide full visibility and optimization

# ICLP

## ICLP – See Entire Supply Chain from Raw Material to Finished Good



Real-time Data  
Visibility



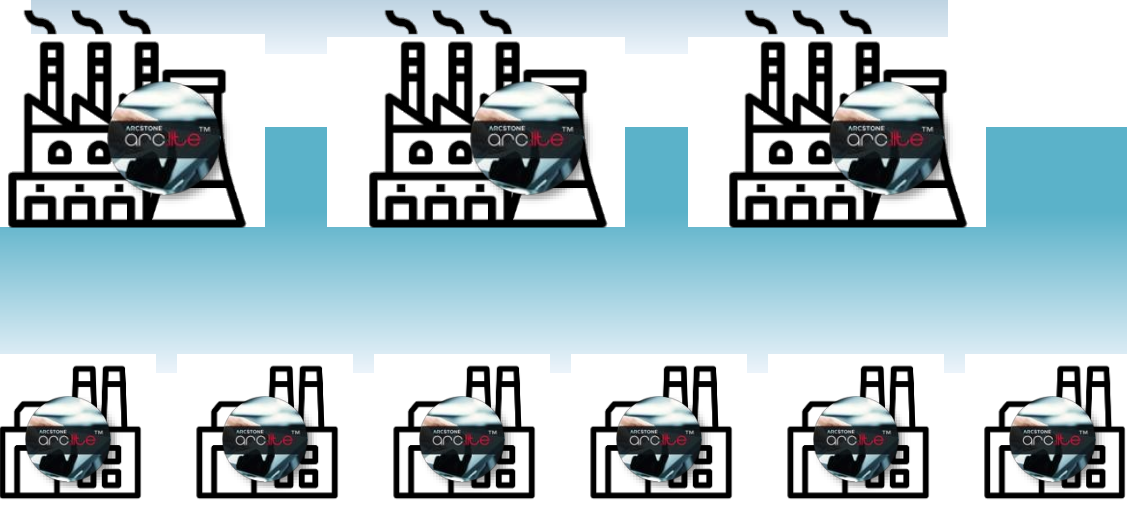
Multi-Tier Supplier  
Traceability



Supply Chain  
Optimization



Secure Data Thru  
Blockchain

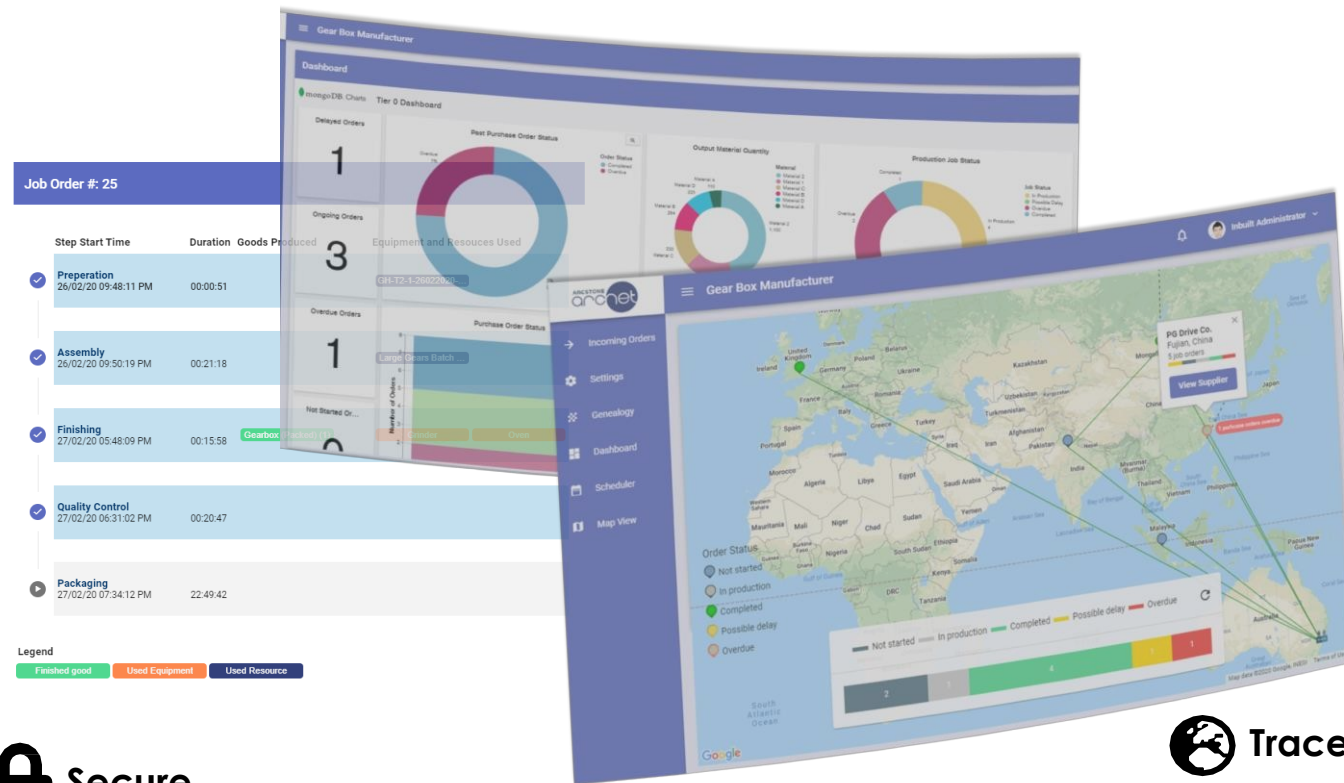


# Supply Chain Complexity - Tackled by Supremesoft's ICLP



## Receive Real-time Updates

View live production status, history and see details of the production process as they are carried out



## Secure

Leverage blockchain technology. arc.net uses a distributed node network to transmit critical real-time manufacturing data

## Visible

Be empowered with full visibility of real-time data from all supplier tiers to elevate your sourcing capabilities

## Audits

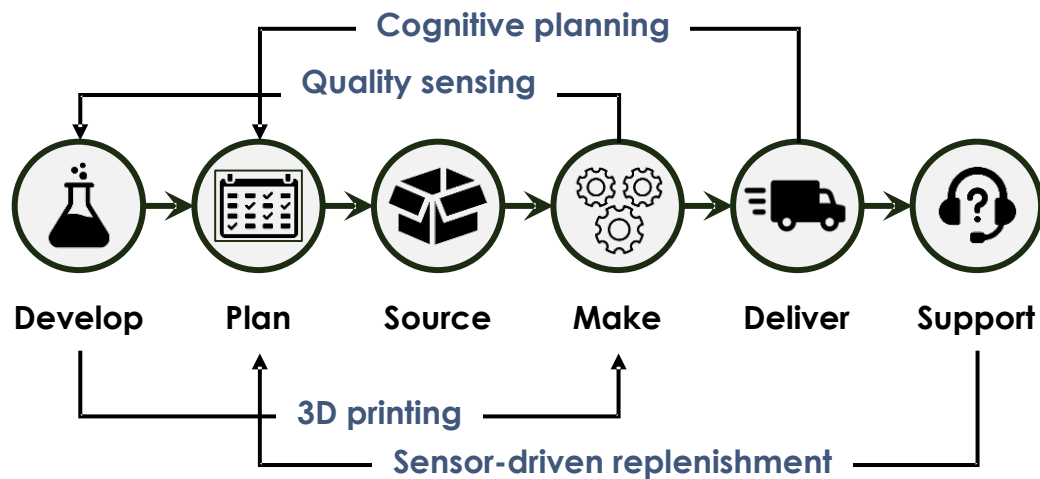
Access audit reports and certifications from parts used in your manufacturing supply chain with a click

## Traceable

Trace down the supply chain with a digital thread connecting supplier and sub-supplier, from raw material sourcing to the hands of the customer

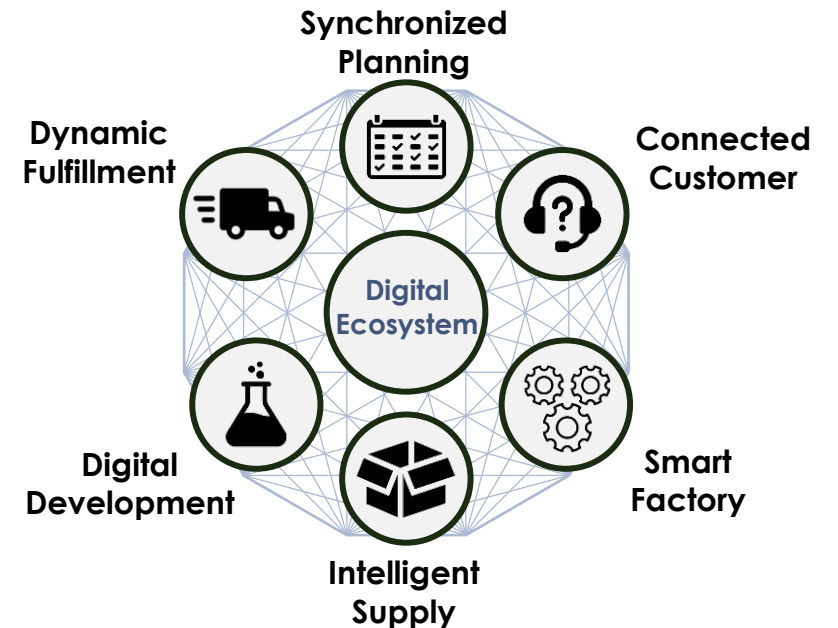
# SHIFT TOWARDS COMPLEX DIGITAL SUPPLY CHAIN NETWORKS

## Traditional Linear Supply Chain



Linear and rigid structure where data is shared between only a few participants

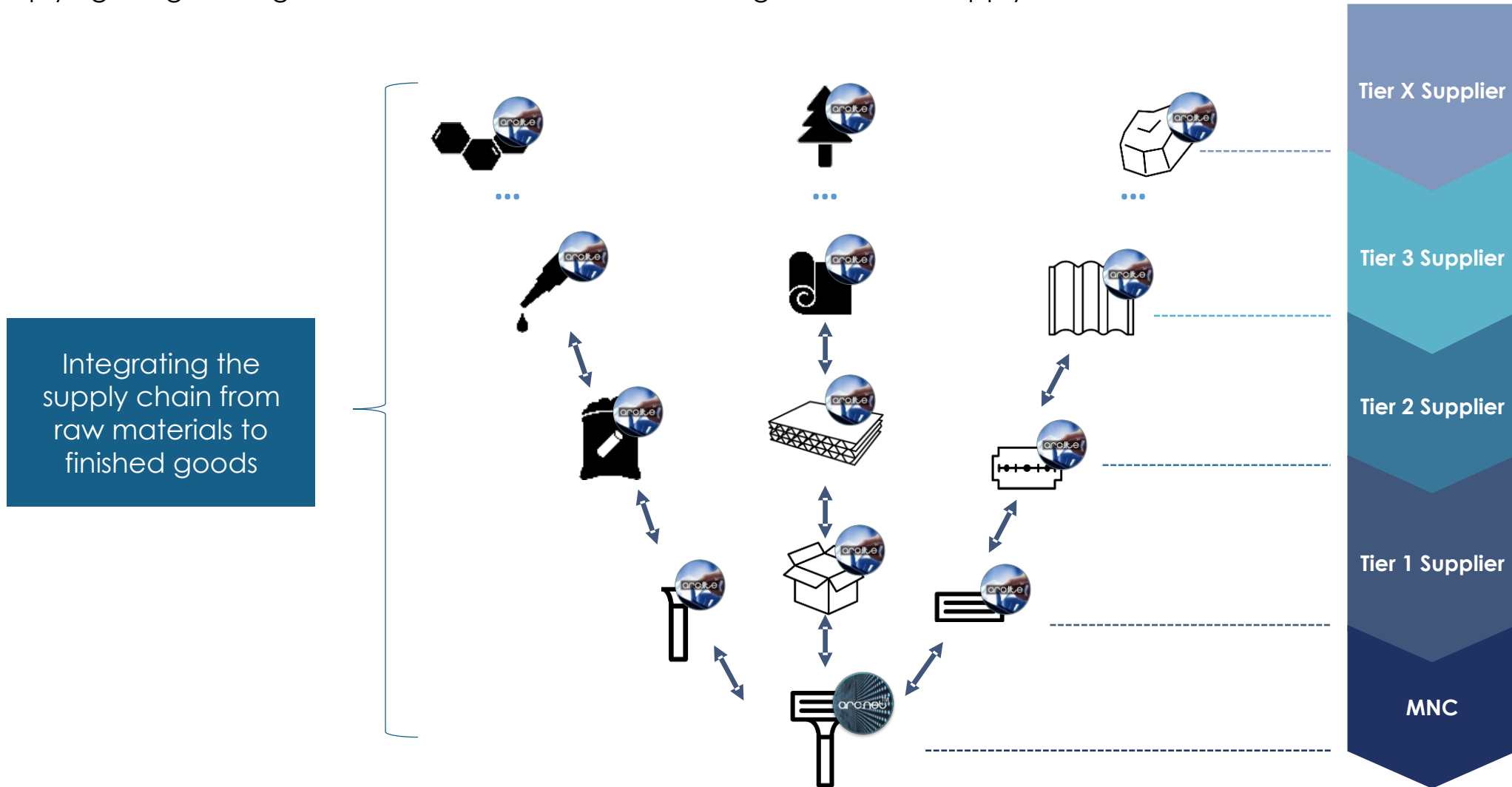
## Digital Supply Chain Network



Matrix-like and flexible structure where data is shared amongst all participants

# Transform to Integrated Data Exchange

Implying a higher degree of automation of data exchange across the supply chain



# END-TO-END VISIBILITY

ICLP serves as a **digital thread** connecting all aspects of the supply chain from raw material sourcing to the hands of the customer



ICLP



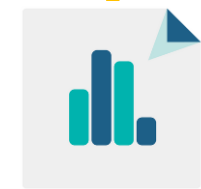
# Features to Drive Supply Chain Transparency

## ICLP



Connects brands to a consortium of manufacturing partners and suppliers

Integrated manufacturing planning and execution platform



Aggregate, analyze, and exchange critical real-time manufacturing data



Real-time data



End-to-end visibility



Across entire supply chain

CONFIDENTIAL - DO NOT DISTRIBUTE

# Empower Multi-level Supply Chain Scalability

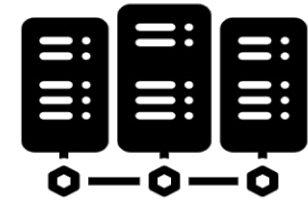
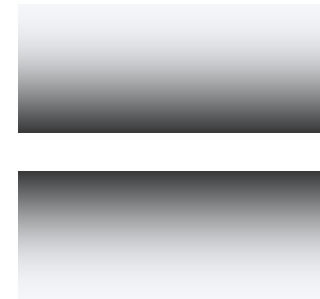
Given its decentralized nature, IMEP & ICLP enables cross platform integration



Manual Interface  
Key In of Information



Integrated Manufacturing  
Planning and Execution  
Platform



Third-party ERP



Light weight FREE MES to  
track sub-supplier  
production operations



Next-gen MES for full  
control, visibility across  
supplier factories

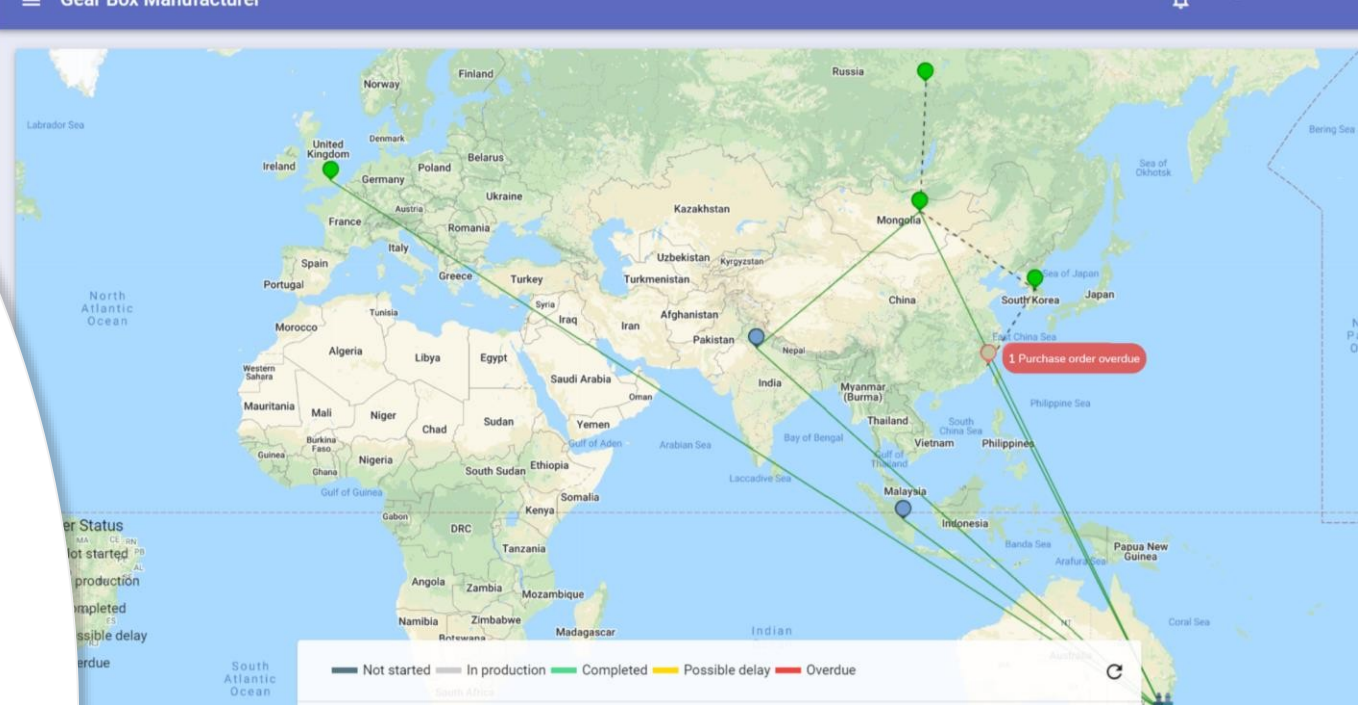


# ICLP

Unprecedented data availability from quality control information to official audit records and certifications all within a digital platform

Full end-to-end manufacturing supply chain transparency across all tiers of suppliers and raw materials providers

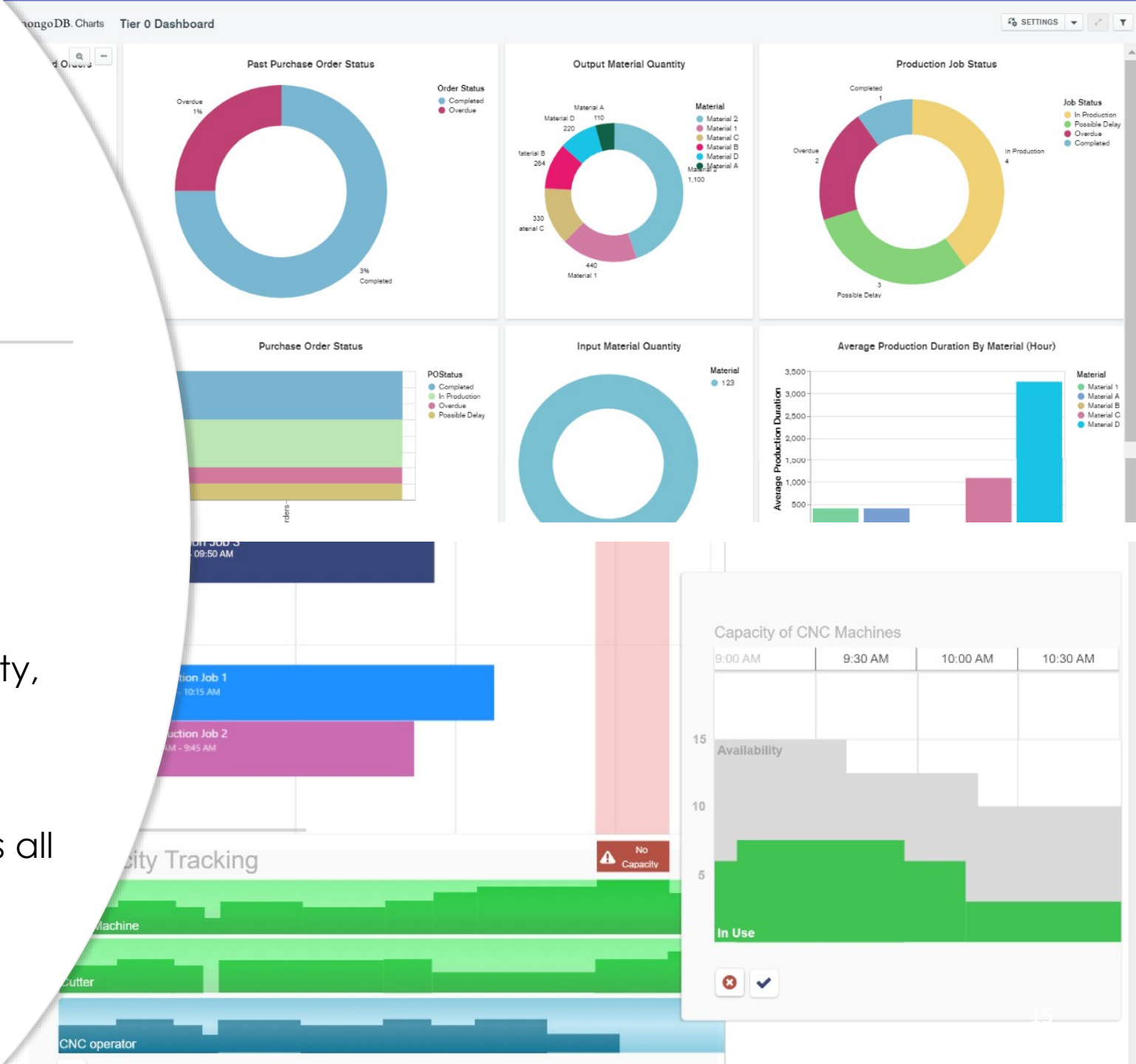
MES level data from each supplier provided in real time across a secure and encrypted multi-level blockchain platform



Job Order #	Step	Start Time	Duration	Goods Produced	Equipment and Resources Used
Job Order # 25	Preparation	26/02/20 09:48:11 PM	00:00:51		GH-T2-1-26022009
	Assembly	26/02/20 09:50:19 PM	00:21:18		Shell (2)
	Finishing	27/02/20 05:48:09 PM	00:15:55	Gearbox (Packed) (1)	Glinder, Large Gear (2)
	Quality Control	27/02/20 06:31:02 PM	00:20:47		Phelic (2)
	Packaging	27/02/20 07:34:12 PM	03:37:16		Packaging (3)

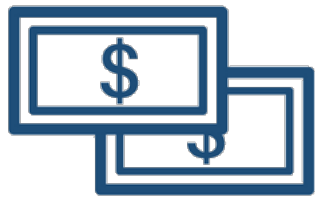
  

Supplier	PO Number	Due Date	Expected Completion
B Corp.	Order	Due Date:	Expected Completion:
gear order		Due Date:	Expected Completion:
PO 9001		Due Date: 23/02/20	Expected Completion: 23/02/20
PG Drive Co.	PO 9002	Due Date: 29/02/20	Expected Completion: 01/01/01
PG Drive Co.	PO 9003	Due Date: 11/03/20	Expected Completion: 01/03/20
PowerTex Ltd.	PO 9004	Due Date: 06/03/20	Expected Completion: 09/03/20
PowerTex Ltd.	PO 9005	Due Date: 01/04/20	Expected Completion: 31/03/20



- Synchronize supplier inventory and production schedules with your own enterprise factories to chase "just-in-time" manufacturing objectives
- Analyze live supplier data to benchmark suppliers on cost, reliability, quality and sustainability
- Easy root cause analysis through full product and BOM traceability across all suppliers

# ICLP BENEFITS



## Reduce Costs

- Optimizing inventory
- Supplier risk mitigation planning
- Production scheduling optimization



## Increase Speed

- Decision making
- Real-time sourcing
- Just-in-time delivery



## Improve Quality

- Real-time planning
- Meeting customer expectations
- Material sourcing traceability

Source  
transparently  
from suppliers

Control your  
supplier network  
end-to-end



# THE OPPORTUNITY IS NOW

Platform to  
provide real-time  
manufacturing  
data

Develop a  
first mover  
advantage

# Join us at the Forefront of Industry 4.0

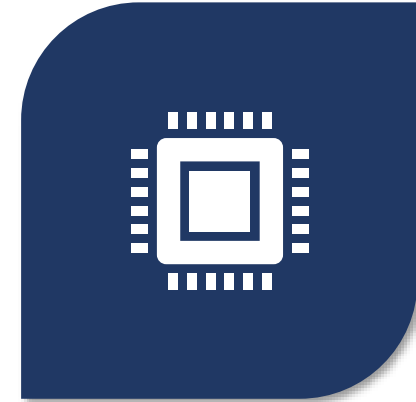


Visit our Demo Center

P3-3A, Shafstbury Square , Persiaran Multimedia  
63000 Cyberjaya, Selangor, Malaysia.



Schedule for technical  
demo



We'll setup a POC remotely  
for your current projects



Contact Us

[info@supremesoft.com.my](mailto:info@supremesoft.com.my)

CONFIDENTIAL – DO NOT DISTRIBUTE