

THE UNCONDITIONAL FANTASY TAROT



LEIPH ROWAN

WELCOME.



TO LEIPH ROWAN'S "THE UNCONDITIONAL FANTASY TAROT" DECK.

AS THE EDITOR OF THIS EXTRAORDINARY COMPILATION, I AM DELIGHTED TO PRESENT YOU WITH A TOOL THAT WILL NOT ONLY INSPIRE YOU BUT ALSO GUIDE YOU ALONG YOUR SPIRITUAL JOURNEY. THIS DECK IS MORE THAN JUST A COLLECTION OF BEAUTIFULLY CRAFTED TAROT CARDS. IT IS AN ASSEMBLAGE OF SYMBOLS, STORIES, AND TEACHINGS, EACH METICULOUSLY CURATED AND INTENDED TO CONNECT YOU WITH THE MYSTICAL ENERGIES OF THE UNIVERSE.

IN THE PAGES THAT FOLLOW, YOU WILL FIND DETAILED DESCRIPTIONS AND INTERPRETATIONS OF EACH CARD, FROM THE MAJOR ARCANA'S JOURNEY OF SELF-DISCOVERY TO THE MINOR ARCANA'S EXPLORATION OF LIFE'S EVERYDAY ASPECTS. THIS DECK DOES NOT MERELY FOCUS ON THE TRADITIONAL TAROT SYMBOLISM; IT DELVES DEEPER, UNCOVERING LAYERS OF MEANING THAT WILL RESONATE WITH YOUR PERSONAL EXPERIENCES AND EMOTIONS.

OUR ARTIST, LEIPH ROWAN, HAS BROUGHT A UNIQUE VISION TO THESE CARDS. DRAWING FROM THE REALMS OF FANTASY, ROWAN'S ARTWORK BREATHES LIFE INTO THE CHARACTERS OF OUR TAROT, CREATING A WORLD THAT IS BOTH ENCHANTING AND ENLIGHTENING. AS YOU JOURNEY THROUGH THIS DECK, YOU WILL ENCOUNTER WISE MERMAIDS, DILIGENT DRYADS, PLAYFUL FAIRIES, AND STEADFAST DWARVES, EACH EMBODYING THE ESSENCE OF THEIR RESPECTIVE CARD AND OFFERING PROFOUND INSIGHTS INTO YOUR LIFE AND SPIRIT.

THIS DECK IS DESIGNED TO BE A COMPASS, GUIDING YOU TOWARDS THE PATH OF SELF-AWARENESS AND SPIRITUAL GROWTH. IT WILL ASSIST YOU IN NAVIGATING LIFE'S CHALLENGES, MAKING DECISIONS, AND UNDERSTANDING YOUR INNERMOST DESIRES AND FEARS. BUT MORE THAN ANYTHING, IT IS A TOOL FOR EXPLORATION AND REFLECTION, INVITING YOU TO DELVE DEEP INTO YOUR SUBCONSCIOUS AND LEARN MORE ABOUT YOURSELF AND THE WORLD AROUND YOU.

THANK YOU FOR EMBARKING ON THIS JOURNEY WITH US. WHETHER YOU ARE A SEASONED TAROT READER OR A CURIOUS NEWCOMER, I AM CONFIDENT THAT "THE UNCONDITIONAL FANTASY TAROT" WILL BE A SOURCE OF INSPIRATION, GUIDANCE, AND WISDOM IN YOUR LIFE.

WISHING YOU A JOURNEY OF DISCOVERY AND ENLIGHTENMENT



Love, Ivy Rowan

Table of Contents

THE FOOL.....	PAGE 4	FOUR OF PENTACLES.....	PAGE 43
THE MAGICIAN.....	PAGE 5	FIVE OF PENTACLES.....	PAGE 44
THE HIGH PRIESTESS.....	PAGE 6	SIX OF PENTACLES.....	PAGE 45
THE EMPRESS.....	PAGE 7	SEVEN OF PENTACLES.....	PAGE 46
THE EMPEROR.....	PAGE 8	EIGHT OF PENTACLES.....	PAGE 47
THE HIEROPHANT.....	PAGE 9	NINE OF PENTACLES.....	PAGE 48
THE LOVERS.....	PAGE 10	TEN OF PENTACLES.....	PAGE 49
THE CHARIOT.....	PAGE 11	PAGE OF PENTACLES.....	PAGE 50
STRENGTH.....	PAGE 12	KNIGHT OF PENTACLES.....	PAGE 51
THE HERMIT.....	PAGE 13	QUEEN OF PENTACLES.....	PAGE 52
WHEEL OF FORTUNE.....	PAGE 14	KING OF PENTACLES.....	PAGE 53
JUSTICE.....	PAGE 15	ACE OF SWORDS.....	PAGE 54
THE HANGED MAN.....	PAGE 16	TWO OF SWORDS.....	PAGE 55
DEATH.....	PAGE 17	THREE OF SWORDS.....	PAGE 56
TEMPERANCE.....	PAGE 18	FOUR OF SWORDS.....	PAGE 57
THE DEVIL.....	PAGE 19	FIVE OF SWORDS.....	PAGE 58
THE TOWER.....	PAGE 20	SIX OF SWORDS.....	PAGE 59
THE STAR.....	PAGE 21	SEVEN OF SWORDS.....	PAGE 60
THE MOON.....	PAGE 22	EIGHT OF SWORDS.....	PAGE 61
THE SUN.....	PAGE 23	NINE OF SWORDS.....	PAGE 62
JUDGEMENT.....	PAGE 24	TEN OF SWORDS.....	PAGE 63
THE WORLD.....	PAGE 25	PAGE OF SWORDS.....	PAGE 64
ACE OF CUPS.....	PAGE 26	KNIGHT OF SWORDS.....	PAGE 65
TWO OF CUPS.....	PAGE 27	QUEEN OF SWORDS.....	PAGE 66
THREE OF CUPS.....	PAGE 28	KING OF SWORDS.....	PAGE 67
FOUR OF CUPS.....	PAGE 29	ACE OF WANDS.....	PAGE 68
FIVE OF CUPS.....	PAGE 30	TWO OF WANDS.....	PAGE 69
SIX OF CUPS.....	PAGE 31	THREE OF WANDS.....	PAGE 70
SEVEN OF CUPS.....	PAGE 32	FOUR OF WANDS.....	PAGE 71
EIGHT OF CUPS.....	PAGE 33	FIVE OF WANDS.....	PAGE 72
NINE OF CUPS.....	PAGE 34	SIX OF WANDS.....	PAGE 73
TEN OF CUPS.....	PAGE 35	SEVEN OF WANDS.....	PAGE 74
PAGE OF CUPS.....	PAGE 36	EIGHT OF WANDS.....	PAGE 75
KNIGHT OF CUPS.....	PAGE 37	NINE OF WANDS.....	PAGE 76
QUEEN OF CUPS.....	PAGE 38	TEN OF WANDS.....	PAGE 77
KING OF CUPS.....	PAGE 39	PAGE OF WANDS.....	PAGE 78
ACE OF PENTACLES.....	PAGE 40	KNIGHT OF WANDS.....	PAGE 79
TWO OF PENTACLES.....	PAGE 41	QUEEN OF WANDS.....	PAGE 80
THREE OF PENTACLES.....	PAGE 42	KING OF WANDS.....	PAGE 81

The Fool



***INNOCENCE, JOURNEY,
BEGINNINGS,
POTENTIAL, FREEDOM***

The Fool card in the Tarot deck often represents the beginning of a journey or a new chapter in one's life. In this particular card, a young woman stands in the center of forest, ready to take on a new adventure. She is surrounded by beautiful birds and beams of sunlight. Her face is illuminated with excitement and wonder, reflecting her free-spirited and spontaneous nature.

She is dressed in simple and comfortable clothing, symbolizing her willingness to embrace simplicity and freedom as she embarks on her journey. Her hair is wild and free, suggesting a lack of concern for societal norms and expectations.

Despite the potential dangers of the unknown, the woman seems unafraid, trusting that the universe will guide her on her path. The Fool card reminds us to embrace new beginnings with a sense of adventure, to be open to the unexpected and to trust in our intuition as we embark on our own journeys in life.





The Magician



**MANIFESTATION, SKILL,
CREATIVITY, CONFIDENCE,
MASTERY**

Presenting the Magician Tarot card, featuring a powerful man as the embodiment of the elemental forces that govern the universe. As a master of manifestation and inspired action, he stands tall, exuding an aura of authority and wisdom.

Clad in a teal cloak adorned with symbols of his mastery, his commanding presence signifies his deep connection to both the spiritual and physical realms, serving as a conduit for the divine and a testament to his extraordinary abilities. The Magician Tarot card symbolizes the unlimited potential that resides within each of us, encouraging us to tap into our innate powers of manifestation, creativity, and resourcefulness. Embrace the Magician's wisdom and learn to channel the boundless energy of the universe, transforming your dreams and aspirations into reality through inspired action and unwavering empowerment and self love.





The High Priestess



***DIVINE WISDOM, INTUITION,
MYSTERY, INSIGHT, DIVINE
FEMININE***



Introducing the High Priestess Tarot card, portraying a young woman, the epitome of spiritual attunement and divine wisdom. With her gaze turned upwards, she stands beneath an ornate stone canopy, as a single beam of ethereal light illuminates her third eye, marking her connection to the divine and her innate intuition.

Adorned in flowing robes, she embodies the divine feminine, representing the mysteries of the subconscious mind and the sacred knowledge that lies hidden within. Her serene expression and radiant aura convey her deep understanding of the universe's inner workings and her unwavering faith in the guidance of her intuition.

The High Priestess Tarot card encourages us to embrace our intuitive nature, delve into the mysteries of the subconscious mind, and tap into the sacred knowledge that lies within. As we connect with the divine feminine and cultivate our inner wisdom, we become attuned to the subtle messages and synchronicities that guide us on our path. Let the High Priestess be your inspiration, as you embark on a journey of self-discovery, spiritual growth, and the awakening of your intuitive powers.





The Empress

**FERTILITY, ABUNDANCE,
SENSUALITY, BEAUTY,
CREATION**



Introducing the Empress Tarot card, featuring a radiant pregnant woman sitting gracefully on a bench within her lavish garden. Enveloped by a flourishing landscape of vibrant flowers and bountiful greenery, she exudes the essence of femininity, beauty, and the nurturing power of Mother Nature.

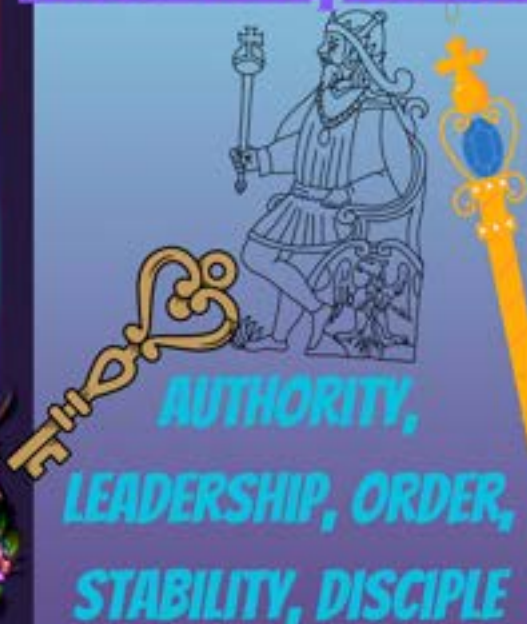
Her serene smile, as she prepares to welcome new life into this world, reflects the loving energy and abundant potential that emanate from her being. Clothed in luxurious garments, adorned with symbols of fertility and growth, she represents the divine connection between the Earth and all living things.

The Empress Tarot card beckons us to embrace the nurturing, creative, and sensual aspects of ourselves. It invites us to tap into the abundance of life's gifts, and to cherish the beauty that resides within and around us. The Empress is a symbol of the fertile ground from which all life springs forth, and the loving energy that sustains and nourishes it. As a powerful archetype of the divine feminine, the Empress teaches us to cultivate our innate capacity for love, compassion, and creative expression. She encourages us to connect with nature, to honor the cycles of growth and change, and to revel in the abundance that flows from a heart filled with gratitude and joy.

Let the Empress Tarot card inspire you to nurture your dreams and desires, to manifest a life of beauty and abundance, and to celebrate the divine feminine essence that lies within each of us. In doing so, you'll find yourself blossoming into the radiant, loving, and powerful being you were always meant to be.



The Emperor



Introducing the Emperor Tarot card, showcasing a formidable man seated upon a magnificent throne, meticulously crafted from the finest materials. As the cosmos envelops him, it signifies his profound understanding and mastery over the himself, reflecting the essence of authority, establishment, and structure.

Adorned in regal garments and symbols of his powerful position, the Emperor exudes a commanding presence, embodying the archetypal father figure who brings order, discipline, and stability. His unyielding gaze, filled with wisdom and determination, reveals the strength of character and unwavering resolve that define his reign.

The Emperor Tarot card invites us to recognize and embrace the qualities of leadership, responsibility, and perseverance in our lives. It calls upon us to establish clear boundaries, to create a solid foundation for our endeavors, and to exercise our power with wisdom and integrity.

As an archetype of the divine masculine, the Emperor teaches us the importance of cultivating a balanced approach to life. He encourages us to honor our inner authority and to embody the principles of fairness, justice, and determination in all that we do.

Let the Emperor Tarot card inspire you to take charge of your life, to establish a strong and stable foundation for your dreams, and to wield your power with wisdom and grace. In doing so, you'll become a beacon of strength, authority, and inspiration, guiding others on their journey through the vast cosmos and leading them toward a brighter future.

The Hierophant



**TRADITION, EDUCATION, MENTOR,
SPIRITUALITY, GUIDANCE**

Presenting the Hierophant Tarot card, featuring a handsome, tattooed man immersed in his alchemy laboratory, skillfully crafting potions and tonics with precision and devotion. The card embodies spiritual wisdom, inviting us to explore the depths of our beliefs and connect with higher truths.

Surrounded by mystical symbols and powerful artifacts, the Hierophant is a master of sacred knowledge, bridging the gap between the divine and the mundane. His tattoos tell a story of spiritual journeys and experiences, reflecting his commitment to the preservation and transmission of time-honored wisdom.

As an archetype of spiritual guidance and mentorship, the Hierophant encourages us to respect and honor the traditions and institutions that have shaped our world. He reminds us of the importance of seeking guidance from those who possess the wisdom and experience that we seek, guiding us on our quest for personal growth and enlightenment.

The Hierophant Tarot card also highlights the value of conformity, urging us to respect the established rules and norms that provide stability and order in our lives. In doing so, we can create a harmonious balance between our individuality and the collective wisdom that has guided humanity for generations.

Let the Hierophant Tarot card inspire you to delve into the mysteries of the universe, to seek the guidance of spiritual mentors, and to embrace the rich tapestry of traditions and institutions that have shaped our world. By aligning ourselves with the timeless wisdom of the Hierophant, we can unlock the secrets of our spiritual journey and pave the way for a future filled with growth, understanding, and harmony.

The Lovers



UNION, RELATIONSHIPS, COMMITMENT, PASSION, PARTNERSHIP

Introducing the Lovers Tarot card, a captivating depiction of two women deeply in love, their tender embrace radiating warmth, connection, and passion. The card embodies love, harmony, relationships, choices, and the alignment of values, inviting us to celebrate the power of love and the beauty of human connection.

The women, surrounded by a lush, blooming garden, represent the intertwining of their souls, their hearts beating in unison. Their deep connection transcends the physical, reflecting a profound emotional and spiritual bond that transcends time and space. They share a moment of pure unconditional love, their energy creating an aura of harmony and balance. As an archetype of love and relationships, the Lovers card encourages us to nurture our connections with others and to cherish the bonds that bring us joy and fulfillment. It also highlights the importance of making conscious choices, urging us to align our actions and decisions with our values and the desires of our hearts.

The Lovers card also serves as a reminder that our relationships are a mirror of our inner selves, reflecting our strengths, weaknesses, and areas of growth. Through our connections with others, we can gain valuable insights into our own hearts, allowing us to forge deeper, more meaningful relationships with those who share our values and aspirations.

Let the Lovers Tarot card inspire you to embrace love in all its forms, to make choices that honor your authentic self, and to celebrate the connections that enrich your life. By cultivating love and harmony within ourselves and our relationships, we can create a world filled with compassion, understanding, and unity.



The Chariot



***DETERMINATION, AMBITION,
ASSERTIVENESS, PROGRESS,
TRIUMPH***



Introducing the Chariot Tarot card, a striking portrayal of a powerful Viking man standing tall between two magnificent horses, one black and one white. This visually arresting card embodies control, willpower, success, action, and determination, inspiring us to harness our inner strength and overcome any obstacles in our path.

The Viking warrior, a symbol of courage and resilience, firmly grasps the reins of the two mighty steeds, illustrating his mastery over opposing forces and his unwavering commitment to his goals. The horses, representing the duality of light and dark, symbolize the balance of opposing energies within us and the power of focused intention to bring harmony and direction to our lives.

As an archetype of victory and determination, the Chariot card encourages us to take decisive action and assert our willpower to manifest our desires. It serves as a reminder that, with the right balance of discipline and passion, we can overcome any challenges that stand in our way and forge our own path to success.

The Chariot card also highlights the importance of self-control and the power of our inner drive to propel us forward. By harnessing our personal strength and determination, we can steer our course through life with purpose and conviction, ultimately achieving our goals and realizing our dreams.

Let the Chariot card inspire you to take the reins of your destiny, to embrace your inner warrior, and to channel your willpower to overcome obstacles and achieve victory. By harnessing your personal power and maintaining control over your thoughts, emotions, and actions, you can create a life of success, fulfillment, and purpose.

STRENGTH



**COURAGE PATIENCE, RESILIENCE, INNER
POWER, ENDURANCE**



Introducing the Strength Tarot card, an evocative depiction of a powerful knight standing before a mesmerizing, energetic portal. As he reaches into the swirling vortex, he demonstrates his mastery over the forces at play. The background flashes with lightning, yet he remains unfazed, a testament to his inner strength and resolve. This captivating card embodies strength, courage, persuasion, influence, and compassion.

The fearless knight, clad in his resolute armor, represents the courage and determination needed to face life's challenges head-on. He stands poised and confident, a symbol of the resilience and fortitude that lies within us all. His unwavering gaze and calm demeanor amidst the chaotic storm signify his mastery over his emotions and his ability to maintain composure in the face of adversity.

The magical portal serves as a metaphor for the infinite power of the human spirit, the strength that we can tap into when we overcome our fears and embrace our inner warrior. The lightning in the background, a symbol of raw, untamed energy, highlights the potential for transformation and growth that lies within each of us.

As an archetype of inner strength and courage, the Strength card encourages us to face our challenges with grace and determination. It serves as a reminder that our true power lies not in brute force, but in the ability to harness our emotions, influence others, and show compassion in the face of adversity.

Let the Strength Tarot card inspire you to tap into your inner reserves of power, to embrace your innate courage, and to stand firm in the face of life's storms. By mastering your emotions and using your influence wisely, you can overcome any obstacles and create a life of fulfillment, resilience, and compassion.

The Hermit



**SOLITUDE, REFLECTION,
INTROSPECTION, CONTEMPLATION,
INNER WISDOM**

Introducing the Hermit Tarot card, a serene and introspective portrayal of a beautiful woman immersed in a book within the tranquil sanctuary of a library. This evocative image embodies soul searching, introspection, solitude, and inner guidance.

The woman, lost in the pages of her book, represents the quest for wisdom and self-discovery that accompanies periods of solitude and introspection. Her peaceful and focused demeanor reflects the calm and clarity that come from delving deep into one's own thoughts and emotions, seeking to understand the inner workings of the self.

Surrounded by the vast collection of books, the library symbolizes the wealth of knowledge and wisdom available to those who embark on a journey of self-exploration. The hushed stillness of the space serves as a reminder that in quiet moments of contemplation, we can access our own inner guidance and draw upon the wisdom of the ages.

As an archetype of introspection and solitude, the Hermit card encourages us to embrace moments of quiet reflection and to journey within ourselves in search of answers and insights. By turning inward and exploring our own thoughts, emotions, and experiences, we can uncover the inner guidance and wisdom that will help us navigate life's challenges with grace and understanding.

Let the Hermit card inspire you to embrace the power of solitude and introspection, to delve deep into your own heart and mind, and to discover the profound wisdom and guidance that lie within. Through soul searching and self-exploration, you can unlock the secrets of your own inner world and chart a course towards greater self-awareness, personal growth, and spiritual fulfillment.

The Wheel of Fortune



DESTINY, CYCLES, CHANGE, LUCK, OPPORTUNITY

Introducing the Wheel of Fortune Tarot card, a vivid and dynamic representation of a colorful wheel spinning through the cosmos, bringing forth an array of infinite possibilities. This captivating image embodies karma, good luck, life cycles, destiny, and turning points. The mesmerizing wheel, adorned with intricate symbols and patterns, represents the cyclical nature of life and the ever-changing circumstances that accompany our journey through the universe. As it spins, it illustrates the endless potential for growth, transformation, and the realization of our dreams.

Bathed in the radiant light of the cosmos, the wheel signifies the interplay of fate and destiny, reminding us that our actions and choices have consequences, both seen and unseen. It symbolizes the cosmic forces that govern our lives and the karmic cycles that weave the tapestry of our individual and collective destinies.

The Wheel of Fortune card encourages us to embrace the natural flow of life and to trust in the cycles of change and transformation. It invites us to acknowledge the role of karma and destiny in our lives and to recognize the potential for growth, opportunity, and success that can arise from even the most challenging circumstances.

Let the Wheel of Fortune card inspire you to harness the power of change and to seize the opportunities that come your way. Embrace the turning points in your life with courage and conviction, and trust in the wisdom of the universe to guide you on your path. By accepting the cycles of life and the lessons they bring, you can cultivate a sense of purpose, fulfillment, and lasting success, grounded in the knowledge that fortune's wheel will continue to spin, shaping your destiny with each revolution.

Justice



***FAIRNESS, BALANCE, TRUTH,
RESPONSIBILITY, DECISIONS***

Presenting the Justice card, a striking portrayal of a powerful and beautiful woman standing tall, confidently holding a balance scale in one hand and staff in the other. This evocative image represents justice, fairness, truth, law, and the inescapable principle of cause and effect. Cloaked in strength and wisdom, the woman embodies the impartiality and fairness required to uphold justice. Her balance scale symbolizes the delicate equilibrium of right and wrong, weighing the merits of each action and its consequences.

The Justice card serves as a powerful reminder of the universal principles that govern our lives, and the interconnectedness of our actions and their outcomes. It encourages us to consider the consequences of our decisions, to act with integrity and fairness, and to seek the truth in every situation.

This compelling Tarot card also highlights the importance of upholding the rule of law, both on a personal and societal level. It reminds us that true justice is achieved when balance and fairness are maintained, and when the rights and dignity of all individuals are respected and protected.

Allow the Justice Tarot card to inspire you to act with integrity, fairness, and honesty in all aspects of your life. Embrace the power of truth and justice, and let their guiding principles shape your decisions and actions. By aligning yourself with the highest ideals of fairness and righteousness, you will cultivate a life that is in harmony with the universal laws, and create a world that is just, compassionate, and filled with light.

The Hanged Woman



SURRENDER, PERSPECTIVE, LETTING GO, PATIENCE, SACRIFICE



Introducing the Hanged Woman Tarot card, a captivating portrayal of a woman hanging upside down, bound by ropes that bind her yet allow her a newfound sense of freedom. This enigmatic image represents pause, surrender, letting go, and the transformative power of embracing new perspectives.

As the woman hangs suspended, she surrenders to the unknown and releases her need for control, symbolizing the power of letting go and allowing life to unfold naturally. Although she is bound, her calm expression and relaxed body language suggest a deep sense of inner peace and trust in the process, embracing the wisdom that sometimes, doing nothing is the most powerful action one can take.

The Hanged Woman also invites us to explore new perspectives and expand our understanding of the world around us. By willingly turning her world upside down, she gains access to insights and wisdom that may have remained hidden or elusive from her previous vantage point.

This shift in perspective allows her to see things from a fresh and enlightening angle, enriching her understanding and empowering her to make more informed decisions.

The Hanged Woman card encourages us to step back and pause when faced with life's challenges or uncertainties. It invites us to surrender control, release our attachment to outcomes, and embrace the power of stillness and introspection. By allowing ourselves to be vulnerable and open to new perspectives, we can gain valuable insights and wisdom that will guide us on our path towards personal growth and spiritual enlightenment.

Let the Hanged Woman Tarot card inspire you to embrace the art of surrender and the transformative power of new perspectives. By cultivating stillness, patience, and openness, you will unlock the door to deeper wisdom, self-awareness, and inner peace.

**KEEP
MOVING
FORWARD**



Death



TRANSFORMATION, REBIRTH, ENDINGS, CLOSURE, RENEWAL

Presenting the Death Tarot card, a striking and symbolic representation of a skeletal knight riding a horse shrouded in ethereal blue flames. This haunting yet powerful image signifies endings, change, transformation, and transition, reminding us that every end is merely a new beginning in disguise.

The skeletal knight, a timeless symbol of mortality, embodies the inescapable cycle of life and death, reminding us that nothing is permanent and that change is a vital part of our existence. The blue flames surrounding the horse evoke the transformative power of fire, symbolizing the cleansing and purifying energy that accompanies endings, paving the way for new beginnings and growth.

While the Death card may evoke feelings of unease or fear, it is ultimately a card of deep transformation and renewal. It invites us to embrace change with courage and grace, letting go of old patterns and beliefs that no longer serve us, and stepping into the unknown with faith and resilience. Through the process of death and rebirth, we are offered the opportunity to reinvent ourselves and discover new paths and possibilities that align with our true nature and purpose.

The Death card encourages us to face the inevitable changes and transitions that life presents to us, and to welcome them as opportunities for growth and self-discovery. By releasing our attachment to the past and embracing the transformative power of endings, we can unlock our potential and step into a brighter, more authentic future.

Let the Death Tarot card inspire you to view endings and change as natural and necessary aspects of life, and to harness the transformative power of transition. Embrace the wisdom and courage that comes with letting go, and trust that new beginnings and opportunities are waiting just beyond the horizon.

Temperance



***MODERATION, HARMONY,
BALANCE, EQUILIBRIUM, PATIENCE***

Introducing the Temperance Tarot card, a serene depiction of a strong woman standing in a gently flowing creek, effortlessly maintaining her balance while holding a cup in her hand. This card symbolizes the importance of moderation, patience, and purpose in our lives, as well as the harmonious blending of opposites to create equilibrium and unity. The woman's graceful posture and calm demeanor represent the inner strength and self-awareness necessary to achieve balance amidst life's constant fluctuations. Her feet, partially submerged in the water, signify her connection to both the material and spiritual realms, symbolizing the integration of these contrasting aspects of life.

The cup she holds represents the importance of moderation and measured action. It is a reminder to maintain a balance between our desires and needs, to stay grounded and not be swept away by the currents of emotion or ambition. The flowing creek beneath her feet represents the ever-changing nature of life, emphasizing the need for adaptability and the understanding that equilibrium requires constant effort and mindfulness.

The Temperance card encourages us to cultivate patience and approach life's challenges with a sense of purpose, recognizing that balance is essential for personal growth and self-discovery. By learning to manage our emotions, desires, and impulses with wisdom and restraint, we can attain a state of inner harmony and fulfillment.

Let the Temperance Tarot card be your guiding star on the journey to self-mastery and balance. Embrace its message of patience, moderation, and purpose, and allow it to lead you towards a more balanced, centered, and contented life. In doing so, you will find the strength and resilience to navigate life's ever-changing currents with grace and poise.

THE DEVIL

**TEMPTATION, ADDICTION, DESIRE,
OBSESSION, POWERLESSNESS**



Introducing the Devil Tarot card, a haunting representation of a man seated in darkness, chained and bound, while a sinister succubus looms behind him, smiling wickedly as she holds the chains that bind him. This card serves as a powerful reminder of the darker aspects of human nature and the potential for self-imposed limitations, attachment, addiction, and excessive indulgence in our desires.

The man in the card represents our shadow self, the hidden aspects of our psyche that we often try to ignore or suppress. The chains that bind him signify the limitations and constraints we impose upon ourselves, often out of fear or a lack of self-awareness. They also represent the power that our vices, addictions, and unhealthy attachments can hold over us.

The seductive succubus embodies the allure of temptation and the darker side of our desires. She represents the captivating power of uncontrolled sexuality, materialism, and hedonism that can lead us astray and bind us in chains of addiction and self-destruction. Her wicked smile suggests her delight in our suffering and the power she wields over those who fall victim to her charms.

The Devil card encourages us to confront our shadow selves and face the darker aspects of our nature head-on. It is a call to recognize the chains that hold us back and to take the necessary steps to break free from them. By acknowledging and addressing our attachments, addictions, and limiting beliefs, we can reclaim our personal power and liberate ourselves from the constraints that keep us from reaching our full potential.

Let the Devil card be a reminder to examine your life and identify the areas where you may be holding yourself back or allowing temptation and vice to control you. By facing these challenges with courage and self-awareness, you can break free from the chains that bind you and step into a more authentic, empowered, and fulfilling life.

The Tower

*UPHEAVAL, CHAOS, REVELATION, AWAKENING,
LIBERATION*



Introducing the Tower Tarot card, a dramatic and powerful scene depicting a tall tower under assault by flashes of lightning and fierce storms, while its base is engulfed in flames. This card symbolizes sudden change, upheaval, chaos, revelation, and awakening, serving as a stark reminder that nothing is truly permanent in this world.

The tower itself represents a structure built on shaky foundations or faulty beliefs that can no longer withstand the force of the universe. The lightning and storms embody the sudden, unexpected changes that can tear apart our illusions, revealing the truth that lies beneath. The base of the tower, consumed by fire, signifies the destruction of the old to make way for the new.

The Tower card is a harbinger of transformation, urging us to brace ourselves for the unexpected and to face the chaos that may come our way. It is a call to release our attachments to the past and to recognize that change, no matter how sudden or tumultuous, can lead to profound growth and self-discovery.

This card also serves as a wake-up call, prompting us to reevaluate our lives and to question the foundations upon which we have built our beliefs and assumptions. As the tower crumbles, we are challenged to confront the truth and to embrace the revelations that emerge from the ashes.

In times of upheaval, the Tower card encourages us to remain resilient and adaptable, trusting that the storm will eventually pass and that we will emerge stronger and more enlightened than before. By facing the chaos head-on and embracing the lessons it offers, we can find the inner strength and wisdom needed to rebuild our lives on a more solid and authentic foundation.

The Star



**HOPE, INSPIRATION, GUIDANCE,
RENEWAL, SERENITY**

The Star card features a powerful and large man, seated gracefully upon a rock, gazing towards the heavens. The sky above him is a tapestry of shimmering stars, each one radiating endless possibilities and infinite potential. This celestial scene inspires feelings of hope and wonder as the man contemplates the boundless opportunities that the universe offers.

The Star card symbolizes hope, inspiration, and guidance. It is a reminder that even in the darkest times, there is always light to guide us forward. The man on the card represents the human connection to the divine, as he draws upon the universal energy to find inspiration and inner peace. His serene demeanor speaks to the inner tranquility that comes from knowing we are guided and supported by a higher power. As you connect with the energy of the Star card, you are encouraged to embrace a sense of renewal and optimism. The stars above represent the vast potential within each of us, urging us to reach for our dreams and aspirations. The peaceful ambiance of the card invites you to connect with your own inner serenity, allowing it to heal and rejuvenate your spirit.

The Star card is a beacon of light in challenging times, reminding us that even in the face of adversity, we can find hope, inspiration, and the guidance necessary to overcome any obstacles. Through faith in ourselves and the universe, we can tap into the limitless potential that surrounds us and chart a path towards a brighter future.



The Moon

**INTUITION, ILLUSION, DREAMS,
EMOTIONS, REFLECTION**



The Moon card depicts a beautiful, ethereal woman, seated in deep meditation with a radiant golden lotus flower cradled gently in her hands. She is enveloped by a soft, luminous glow of energy, enhancing her otherworldly aura. Behind her, the Moon hangs in the night sky, casting a mysterious and ethereal light upon the scene, emphasizing the card's connection to intuition, illusion, dreams, emotions, and reflection.

The Moon card represents the deep and often hidden aspects of our psyche, urging us to explore our inner landscape and connect with our intuitive nature. The ethereal woman symbolizes the divine feminine energy, embodying the qualities of sensitivity, introspection, and emotional depth. Her meditation with the golden lotus flower signifies her alignment with higher wisdom and spiritual insight, illustrating the power of intuition in guiding our path.

This card invites you to delve into the realm of dreams, emotions, and illusions, uncovering the hidden truths that lie beneath the surface. The glowing Moon serves as a reminder that, though the path may sometimes be shrouded in darkness and mystery, our intuition can light the way and reveal the answers we seek.

As you connect with the energy of the Moon card, you are encouraged to embrace the power of your emotions and intuition, trusting in their guidance as you navigate life's complexities. Reflect upon your innermost feelings, dreams, and desires, and allow the illuminating light of the Moon to reveal the wisdom and insights that lie within.



The Sun



***JOY, VITALITY, ENLIGHTENMENT,
OPTIMISM, GROWTH***

The Sun card features a radiant, smiling young woman confidently strutting through a magnificent field of vibrant flowers, basking in the warm embrace of bright sunlight. In her hands, she effortlessly holds a dazzling ball of fire, symbolizing her mastery over the elements and the boundless energy it represents.

As the embodiment of positive energy, the smiling woman captures the essence of the Sun card, radiating warmth, happiness, and a zest for life.

Her effortless connection with the fireball signifies her ability to harness the power of the Sun and utilize it to fuel her personal growth and development. The field of colorful flowers represents the abundance and prosperity that comes from embracing the energy of the Sun in all its glory.

This card invites you to bask in the warmth of the Sun's rays, allowing its radiant energy to illuminate your path and guide you towards a brighter future. As you connect with the joyful spirit of the Sun card, you are encouraged to cultivate optimism, embrace new opportunities, and celebrate the beautiful moments that life has to offer.

Let the Sun's radiant energy fill your life with joy, vitality, and enlightenment. Embrace the power of optimism and growth, and allow the light of the Sun to guide you on your journey towards happiness, fulfillment, and success.



Judgement



**REDEMPTION, RENEWAL,
EVALUATION, ACCOUNTABILITY,
REBIRTH**

The Judgement card depicts a striking angel adorned with black and white wings, symbolizing the balance between light and darkness, good and evil. The celestial being is surrounded by an ethereal, divine light, embodying the essence of redemption and renewal.

As a symbol of divine guidance and higher consciousness, the angel on the Judgement card invites you to reflect on your life choices, embrace the consequences of your actions, and learn from the lessons they offer. The angel's black and white wings represent the duality of human nature, acknowledging that each person carries within them the potential for both good and evil, light and darkness. The radiant light that envelops the angel signifies the transformative power of self-reflection and the possibility of personal renewal.

The Judgement card calls you to examine your life's choices, take accountability for your actions, and strive for personal growth through self-reflection and spiritual awakening. As you embark on this transformative journey, you will discover the power of redemption and the beauty of rebirth. Embrace the wisdom of the angel's guidance and allow your spirit to soar towards a renewed sense of purpose and a brighter future.

The World



***COMPLETION, WHOLENESS,
ACHIEVEMENT, FULFILLMENT,
UNITY***

The World card portrays a stunning black woman gracefully seated upon the Earth, surrounded by the vastness and magnificence of the cosmos.

As the embodiment of completion and unity, she represents the culmination of the soul's journey and the realization of one's true potential.

Her serene, confident presence signifies the mastery of life's lessons and the attainment of spiritual enlightenment. She is a symbol of harmony, balance, and the interconnectedness of all things, her essence radiating the energy of the universe in all its boundless potential. The cosmos that encircle her are a testament to the limitless possibilities that await those who embrace the wisdom of the World card.

As you draw the World card, you are reminded of the interconnectedness of all aspects of life, and the importance of acknowledging and celebrating your achievements. You are called to embrace the wholeness within you, as well as the unity of the world around you. The beautiful black woman on this card invites you to cherish your journey, recognize your accomplishments, and rejoice in the fulfillment of your soul's purpose. As you do, you will discover the boundless potential of the universe and the infinite beauty of the world that lies within and around you.

Ace of Cups

The Ace of Cups card presents a beautiful underwater scene filled with the wonders of the ocean depths. Two mermaids swim gracefully in a dance of love and connection. The water around them is alive with the energy of love and creativity, representing the depths of their emotional world and the potential for spiritual growth that comes from embracing new beginnings.

In this tender moment, one mermaid lovingly presents a large, radiant crystal to the other, symbolizing the deep bond they share and the commitment they are making to one another. The crystal, glowing with the magic of the ocean, represents the emotional fulfillment they find in each other and the creative spark that will continue to inspire them as they move forward together. The proposal is a beautiful expression of love, and it marks the start of an exciting new chapter in their lives.

The Ace of Cups card encourages you to open your heart to love, creativity, and spiritual growth. Embrace the power of your emotions and let them guide you on a journey of self-discovery and personal transformation. Whether you are entering a new relationship, exploring your creative passions, or deepening your spiritual connection, the Ace of Cups serves as a reminder that love, emotional fulfillment, and new beginnings are within your reach.



**LOVE, NEW BEGINNINGS,
EMOTIONAL FULFILLMENT,
CREATIVITY, SPIRITUAL
GROWTH**



Two of Cups

The Two of Cups card depicts a captivating underwater scene in which two beautiful mermaids gaze into each other's eyes, the depths of their emotions reflected in the serene blue of the surrounding water. Their embrace is one of mutual respect and harmony, as they come together to form a partnership based on trust, emotional balance, and a strong connection. The water around them swirls gently, symbolizing the perfect harmony and balance they have achieved in their relationship.

In this magical moment, the two mermaids are drawn to each other, their attraction undeniable as they share an intimate connection that transcends the physical realm. Their tails intertwine, creating a symphony of color and movement that embodies the essence of their partnership. The energy of the Two of Cups card is one of unity and emotional balance, reminding you of the importance of establishing strong, loving relationships built on mutual respect and understanding.

Embrace the message of the Two of Cups and let it inspire you to cultivate partnerships based on love, attraction, and harmony. Seek out relationships that bring out the best in you and foster emotional balance, whether it be romantic, platonic, or professional. By nurturing these connections and fostering a sense of mutual respect, you can create a life filled with love, harmony, and emotional fulfillment.



**PARTNERSHIP, ATTRACTION, MUTUAL
RESPECT, HARMONY, EMOTIONAL
BALANCE**



Three of Cups

The Three of Cups card features a stunning scene of joy and celebration as a beautiful mermaid leaps gracefully from the water, her joyous expression reflecting the freedom and happiness that fills her heart. The sky above her is illuminated by shimmering sunlight, casting a warm, golden glow over the tranquil sea. The mermaid is surrounded by a colorful array of balloons, symbolizing the festive atmosphere and the joy of being in the company of friends and loved ones.

In this uplifting image, the mermaid's ecstatic leap embodies the essence of celebration, friendship, and community. She radiates positive energy, inspiring those around her to come together and revel in the beauty of life. This card is a reminder of the importance of nurturing our connections with others and embracing the power of collaboration and creativity. By working together, we can create lasting memories, achieve greater goals, and truly celebrate the joys of life.

Let the Three of Cups inspire you to embrace the spirit of celebration and friendship. Seek out opportunities to connect with others, whether it be through social gatherings, creative collaborations, or simply spending quality time with loved ones.

Embrace the warmth of community and cherish the bonds of friendship that enrich your life. By cultivating these connections, you open yourself to the joy, creativity, and collaboration that can make life truly magical.





Four of Cups

The Four of Cups card illustrates a poignant scene where a male merman finds himself entangled in fishing nets, his face twisted in frustration and helplessness. The vibrant underwater world he once enjoyed is now overshadowed by the darkness of an incoming storm, further intensifying the sense of distress and entrapment. This card speaks to themes of discontent, boredom, apathy, missed opportunities, and introspection.

The trapped merman symbolizes feelings of unhappiness and boredom, as he struggles to break free from the confining nets that hold him captive. The darkening sky and the approaching storm represent the emotional turmoil that often accompanies a sense of apathy or detachment from one's surroundings. The Four of Cups is a reminder that, at times, we can become so focused on our dissatisfaction or lack of excitement that we miss out on opportunities for growth and happiness right before our eyes.

When the Four of Cups appears in a reading, it may indicate a period of introspection and self-reflection, as you assess your current emotional state and consider your options. This card serves as a reminder to reevaluate your priorities and recognize the opportunities that you may have overlooked. It is important to acknowledge feelings of boredom or apathy and explore their origins in order to break free from the metaphorical nets that are holding you back. By taking a step back to gain a fresh perspective, you can discover new ways to reignite your passion and find contentment in your life.



**DISCONTENT, BOREDOM, APATHY,
MISSED OPPORTUNITIES,
INTROSPECTION**



Five of Cups



The Five of Cups card captures a heartrending moment between two mermen deeply in love, as one of them fades from this world while his lover holds him close. The ocean around them, once a place of joy and togetherness, is now a backdrop for the sorrow and despair they feel.

This card speaks to themes of loss and regret.

The fading merman represents the grief associated with the Five of Cups, while the embrace between the two lovers symbolizes the deep emotional connection that has been shattered by this tragedy. The ocean, once a source of happiness and vitality, now serves as a reminder of the fleeting nature of life and the pain that often accompanies loss. The Five of Cups card encourages us to confront our feelings of sadness and disappointment, and to recognize the impact of focusing solely on the negative aspects of our experiences.

When the Five of Cups appears in a reading, it suggests that you may be grappling with feelings of loss or disappointment. This card serves as a reminder that, while it is important to acknowledge and process your emotions, it is equally important not to become consumed by them. It is essential to recognize the positive aspects of your life and to cultivate gratitude for the blessings that remain. By finding the strength to move forward and shift your focus toward healing and personal growth, you can begin to overcome your grief and regain your emotional balance.



**LOSS, GRIEF, DISAPPOINTMENT, REGRET,
FOCUS ON THE NEGATIVE**



Six of Cups

The Six of Cups tarot card is a celebration of the joy and innocence. A beautiful pink-haired mermaid dances playfully in the ocean, surrounded by small fish and gentle waves. Her carefree demeanor and the delight she takes in her surroundings evoke a sense of nostalgia, innocence, and emotional security. This card encourages us to embrace the beauty of our past and cherish the simple pleasures in life.

The mermaid, with her youthful appearance and playful spirit, symbolizes the innocence of childhood and the sense of wonder that we often lose as we grow older. The fish and the waves represent the simple joys and emotional security that can be found in revisiting our past and cherishing our fond memories. The Six of Cups card reminds us of the importance of nurturing our inner child, and finding happiness in the simple, yet meaningful, aspects of our lives.

When the Six of Cups appears in a reading, it suggests a time to reflect on the past and to reconnect with the innocence and joy of your childhood. It may indicate a reunion with someone from your past or an opportunity to revisit a place that holds special memories for you. This card encourages you to cherish the emotional security that comes from remembering the simpler times in life, and to embrace the nostalgia and happiness that these memories can bring. By doing so, you can foster a sense of emotional well-being and find the strength to face the challenges of the present with the wisdom and perspective gained from your experiences.



**NOSTALGIA, CHILDHOOD, INNOCENCE,
REUNION, EMOTIONAL SECURITY**

Seven of Cups

The Seven of Cups tarot card showcases the power of imagination and dreams, inviting us to explore the infinite possibilities of our hearts and minds. Three mermaids hold hands as they look at the distant horizon, supporting each other as they dream of the future possibilities. Their spirits filled with wonder, they gaze upon a world of limitless potential, encouraging us to embrace our fantasies and indulge in the magic of wishful thinking.

The three mermaids represent the power of friendship and the importance of relying on others for support in our emotional and spiritual journeys. Their joined hands symbolize unity and the strength that comes from shared dreams and aspirations. The distant horizon represents the uncharted territories of our imaginations, urging us to step beyond the boundaries of our perceived limitations and explore the enchanting realm of possibilities that lies before us. The Seven of Cups encourages us to dream big and to open our hearts and minds to the boundless potential that the universe has to offer.

When the Seven of Cups appears in a reading, it invites you to tap into your imagination and explore the infinite possibilities that life has to offer. This card may signify a period of daydreaming or fantasy, urging you to consider your deepest desires and aspirations. It is a reminder that our dreams can provide valuable insights and inspiration, but it also warns against becoming lost in illusion or wishful thinking. By keeping your feet firmly planted on the ground and maintaining a healthy balance between fantasy and reality, you can harness the power of your imagination to create a brighter future for yourself and those around you.



**CHOICES, FANTASY, ILLUSION, WISHFUL
-THINKING, IMAGINATION 32**

Eight of Cups



The Eight of Cups tarot card embodies the emotions of disappointment, abandonment, and the desire to seek deeper meaning in life. A mermaid sits upon a rock, gazing at a ship in the distance as the sun sets over the horizon. The fading light casts an air of melancholy on the scene, reflecting the mermaid's inner turmoil as she contemplates leaving behind the life she has known in search of something more fulfilling and profound.

The mermaid's solitary figure upon the rock represents the feeling of isolation that can accompany the decision to embark on a new path in life. The distant ship symbolizes the journey that lies ahead, filled with both uncertainty and the promise of adventure. The setting sun conveys a sense of closure and the end of one phase of life, as well as the beginning of another. The Eight of Cups encourages introspection, urging us to examine our lives and determine whether our current path is truly in alignment with our deepest desires and values.

When the Eight of Cups appears in a reading, it is an indication that you may be feeling unfulfilled or dissatisfied with your current circumstances. It is a call to reevaluate your life and consider whether you are truly content with your present situation or if there is a deeper longing within you that remains unfulfilled. This card suggests that it may be time to make a difficult decision and embark on a journey of self-discovery, leaving behind the familiar and venturing into the unknown. While this transition may be challenging, the Eight of Cups assures you that the rewards of pursuing a more authentic and meaningful life will far outweigh any temporary hardships you may encounter along the way.



**DISAPPOINTMENT, ABANDONMENT,
WITHDRAWAL, SEEKING DEEPER
MEANING, TRANSITION**



Nine of Cups

The Nine of Cups tarot card radiates satisfaction, wish fulfillment, contentment, and gratitude. A handsome merman raises his arms triumphantly as gold coins rain down from the sky into his watery world, signifying abundance and prosperity. The merman's joyful expression reflects his emotional well-being, as he revels in the good fortune that has come his way. This scene encapsulates the happiness and contentment that can be achieved when our deepest desires are realized, and we are able to bask in the rewards of our efforts.

The merman's triumphant pose in the Nine of Cups symbolizes the emotional satisfaction that comes from achieving our goals and fulfilling our wishes. The gold coins raining down from the sky represent the material and emotional abundance that can be attained when we trust in our own abilities and follow our passions. The watery world of the merman serves as a reminder that true contentment and emotional well-being can be found when we are in harmony with our environment, and when we are able to flow with the currents of life rather than resisting them.

When the Nine of Cups appears in a reading, it is an indication that you are experiencing a period of emotional satisfaction, contentment, and fulfillment. Your hard work, perseverance, and faith in yourself have paid off, and you are now able to enjoy the fruits of your labor. This card encourages you to take the time to appreciate and be grateful for the blessings in your life, and to recognize that true happiness comes from within. Additionally, the Nine of Cups serves as a reminder to be generous with your good fortune and share your happiness with others, knowing that the more love and joy you give, the more you will receive in return.



*SATISFACTION, WISH
FULFILLMENT,
CONTENTMENT, GRATITUDE,
EMOTIONAL WELL-BEING*



Ten of Cups

The Ten of Cups tarot card is a beautiful representation of happiness, harmony, emotional fulfillment, family, and stability. A beautiful mermaid gazes off into the sky, in tune with the vast visit from the universe above her. As she connects with the celestial realm, she finds peace and contentment in her surroundings. This tranquil scene embodies the harmony and emotional fulfillment that can be achieved when we are aligned with our higher selves and deeply connected to our loved ones.

The mermaid in the Ten of Cups symbolizes the emotional depth and intuitive nature that are key to finding true happiness and fulfillment. Her serene gaze into the sky represents the spiritual connection that can bring us inner peace and emotional balance. The vast, star-filled universe above her symbolizes the limitless potential for joy, love, and harmony that can be attained when we open ourselves to the energy of the cosmos and strive for emotional growth and connection with those around us.

When the Ten of Cups appears in a reading, it is a message of emotional fulfillment, harmony, and happiness. This card signifies that you are experiencing a period of deep connection with your loved ones and a sense of emotional stability. The Ten of Cups encourages you to cherish the bonds you share with your family and friends, and to celebrate the happiness and harmony that have come into your life. This is a time to focus on the emotional riches that surround you, and to be grateful for the love and support of those closest to you. Remember that true happiness is found not in material possessions, but in the love and connections we share with others, and in our ability to find harmony and balance within ourselves.



**HAPPINESS, HARMONY, EMOTIONAL
FULFILLMENT, FAMILY, STABILITY 36**



Page of Cups



The Page of Cups tarot card features a young mermaid, radiating joy as she playfully spins and swims around in her underwater realm. Her laughter and exuberance are contagious, inviting those around her to join in her carefree and spirited dance. This delightful scene embodies the essence of curiosity, imagination, and compassion that are associated with the Page of Cups.

The young mermaid in the Page of Cups represents the youthful energy of creative potential. Her spirited dance in the water signifies her ability to access her intuition and deep emotional wellspring, allowing her to explore her creativity and receive intuitive messages. Her laughter and joy symbolize the compassion and empathetic nature that are characteristic of the Cups suit, reminding us to approach our emotions and those of others with kindness and understanding.

When the Page of Cups appears in a reading, it is a message to embrace your inner child and tap into your creative and intuitive abilities. This card encourages you to be open to new experiences, to explore your imagination, and to approach life with curiosity and wonder. The Page of Cups may also indicate that you are receiving intuitive messages or experiencing synchronicities that can guide you on your path. Pay attention to your dreams, gut feelings, and any emotional insights that come to you at this time. Additionally, this card can be a reminder to approach your relationships with compassion and empathy, taking the time to truly understand and connect with the emotions of those around you. By embracing your inner Page of Cups, you can unlock your creative potential and deepen your emotional connections with others.



**CREATIVE OPPORTUNITIES, INTUITIVE
MESSAGES, CURIOSITY, AND
IMAGINATION, COMPASSION**



Knight of Cups



The Knight of Cups tarot card showcases a handsome merman surrounded by an array of vibrant flowers, floating gracefully in the water. His serene expression and the soft ripples of water around him create an atmosphere of love and confidence. As the embodiment of creativity, romance, and love the Knight of Cups is a captivating figure that inspires both admiration and affection.

The merman in the Knight of Cups represents the romantic and chivalrous aspect of the Cups suit. The flowers surrounding him symbolize the beauty and charm that he brings to his endeavors, as well as his connection to emotions, love, and creativity. The gentle water represents the deep emotional and intuitive nature of the Cups suit and highlights the Knight's ability to navigate the realm of emotions with grace and skill. His serene demeanor and confident gaze signify that he is in touch with his feelings and able to express his emotions with clarity and sincerity.

When the Knight of Cups appears in a reading, it is a signal to embrace the romantic, creative, and emotionally expressive aspects of yourself. This card encourages you to pursue your passions, whether it be in the realm of art, music, or literature, and to express your emotions with openness and sincerity. It also suggests that a romantic encounter or the deepening of an existing relationship may be on the horizon. In addition, the Knight of Cups can represent a charming and emotionally intelligent individual who will enter your life, bringing with them an opportunity for love, creativity, or personal growth. By channeling the energy of the Knight of Cups, you can explore the depths of your emotions, create meaningful connections with others, and embrace the beauty that life has to offer



**CREATIVITY, ROMANCE, LOVE,
CHARM, BEAUTY**

Queen of Cups

The Queen of Cups tarot card features a beautiful and powerful mermaid seated upon a throne crafted from exquisite mother of pearl.

With a serene and knowing expression, she gazes out at her watery realm, her wisdom and love guiding her subjects. As the embodiment of compassion and intuition the Queen of Cups is a nurturing and inspiring figure who leads with grace and emotional intelligence.

The mermaid in the Queen of Cups represents the emotional and intuitive aspect of the Cups suit. The mother of pearl throne signifies the connection to the ocean's depths and the emotional realm, highlighting the Queen's mastery over her feelings and her ability to navigate the complex world of emotions with ease. The serene and nurturing atmosphere of the card represents the Queen's compassionate nature and her commitment to caring for the emotional well-being of her subjects. Her wise and loving gaze conveys her innate understanding of the emotional currents that run through all living beings.

When the Queen of Cups appears in a reading, it is a call to embrace your compassionate, intuitive, and emotionally stable side. This card encourages you to nurture yourself and others, offering support and understanding in times of need. It also suggests that you may be in a position to offer guidance and wisdom to those around you, drawing from your own experiences and empathetic nature. The Queen of Cups reminds you to stay in touch with your emotions, using them as a source of strength and inspiration rather than allowing them to overwhelm you.

By embodying the qualities of the Queen of Cups, you can create a harmonious and emotionally fulfilling life, both for yourself and for those around you.



**COMPASSION, CARING, INTUITIVE, IN
FLOW, EMOTIONALLY STABLE**



KING OF CUPS



The King of Cups tarot card depicts a handsome merman effortlessly treading water in a tropical paradise. His shimmering scales catch the light, reflecting the warmth and beauty of his surroundings. As the ultimate representation of compassion, and diplomacy the King of Cups is a wise and caring leader who possesses a deep understanding of the emotional realm and who navigates life's challenges with grace and poise.

The merman in the King of Cups symbolizes the emotional and creative aspect of the Cups suit. His effortless ability to stay afloat in the water represents his mastery over his emotions and his ability to remain balanced and composed, even in turbulent times. The tropical surroundings and shimmering scales signify the warmth, beauty, and abundance that come from living a life guided by emotional intelligence and compassion. The King of Cups is a reminder that true power and leadership stem from the ability to understand and manage one's emotions and to approach life with empathy and diplomacy. When the King of Cups appears in a reading, it is a call to embrace your compassionate, diplomatic, emotionally balanced, warm-hearted, and creative side. This card encourages you to develop emotional intelligence and to use your innate empathy and understanding to navigate challenging situations with grace and wisdom. It also suggests that you may be in a position to offer guidance and support to others, using your emotional insight and compassionate nature to help them find balance and healing. The King of Cups is a reminder to stay in touch with your emotions and to use them as a source of strength and inspiration, rather than allowing them to overwhelm you. By embodying the qualities of the King of Cups, you can create a harmonious and emotionally fulfilling life for yourself and for those around you.



***COMPASSIONATE, DIPLOMATIC,
EMOTIONALLY BALANCED, WARM
HEARTED, CREATIVE***

Ace of Pentacles

**PROSPERITY, OPPORTUNITY,
GROWTH, MANIFESTATION, NEW
BEGINNINGS**



The Ace of Pentacles tarot card shows a young woman gracefully balancing on a large stone covered in lush green moss. She stands in a serene environment, surrounded by an abundance of ripe fruit and the signs of life's prosperity. The scene exudes a sense of opportunity and the potential for personal and financial growth. As the young woman maintains her balance, she embodies the promise of new beginnings, demonstrating that with focus and determination, anything can be achieved.

In this card, the Ace of Pentacles represents the potential for manifesting wealth, success, and abundance. The young woman's connection to the earth and the fruitful environment is a symbol of the grounding energy necessary to bring dreams and aspirations to life. This card is a reminder that, with the right attitude and perseverance, one can create a solid foundation for future endeavors.

The lush moss-covered stone and bountiful fruit also signify the nurturing aspect of growth, implying that there is an opportunity to cultivate abundance not only in material wealth but also in personal and spiritual growth. Embracing new beginnings and seizing opportunities presented in life can lead to a prosperous and fulfilling journey. The Ace of Pentacles serves as a beacon of inspiration, encouraging individuals to take charge of their own destinies and create the lives they desire.

Two of Pentacles



***BALANCE, ADAPTABILITY, FLEXIBILITY,
CHANGE, PRIORITIZATION***



The Two of Pentacles tarot card depicts two beautiful dryads balancing gracefully on a stone amidst a lush jungle. Their poised and confident expressions illustrate their ability to maintain equilibrium, even when surrounded by the wild and ever-changing environment. The verdant foliage that surrounds them is a symbol of growth and the constant flux of life. This card conveys the importance of balance, adaptability, and flexibility in the face of change and uncertainty. In this card, the dryads represent the duality of life and the need to prioritize and manage various aspects of one's existence. They demonstrate that it is possible to maintain a sense of harmony and stability even when faced with challenges or unexpected changes. The Two of Pentacles serves as a reminder to remain adaptable and to reassess priorities, ensuring that the right balance is struck between personal and professional commitments, relationships, and individual growth.

The rich jungle setting underscores the importance of embracing change as an essential part of life's journey. The diverse and dynamic environment highlights the necessity of flexibility and adaptability in order to thrive. The Two of Pentacles encourages individuals to face the ebb and flow of life with grace and poise, trusting that they possess the strength and resilience to adapt and grow in any situation. By learning to prioritize and navigate life's changes, one can maintain balance and harmony in the midst of chaos.

THREE OF PENTACLES



COLLABORATION, TEAMWORK, SKILL, CREATIVITY, COOPERATION



The Three of Pentacles tarot card features two powerful dryad men standing in a forest, their bodies seemingly formed from the trees themselves. Their strong and sturdy presence evokes a sense of unity and harmony with the natural world around them. These dryads embody the essence of collaboration, teamwork, and cooperation, demonstrating the power of joining forces to achieve a common goal. The lush forest that surrounds them is a testament to their combined skills and creative energy.

In this card, the dryads represent the importance of working together to create something greater than what could be accomplished alone. They symbolize the value of collaboration and open communication, which are key components of a successful team. The Three of Pentacles encourages individuals to harness their unique skills and talents, and to collaborate with others to achieve shared objectives. By fostering an environment of mutual support and cooperation, the dryads show that it is possible to overcome challenges and create something beautiful and enduring.

The forest setting in the Three of Pentacles is a powerful symbol of the growth and expansion that can arise from effective teamwork. The trees and foliage intertwine and support one another, creating a strong and interconnected network that thrives on cooperation and collaboration.

This card serves as a reminder that by pooling resources, skills, and knowledge, individuals can create something far more magnificent and enduring than they ever could alone. The Three of Pentacles invites you to embrace teamwork, foster open communication, and cherish the creative synergy that comes from working together in harmony.

Four of Pentacles



**SECURITY, STABILITY,
CONTROL, POSSESSIVENESS,
SAVING**



The Four of Pentacles tarot card depicts a beautiful woman sitting amongst the roots of a mighty tree, deep in meditation. The serene atmosphere that envelops her is palpable, as energy flows around her in a gentle, nurturing embrace. The scene is a powerful representation of the concepts of security and stability, as the woman is grounded and supported by the strong roots that anchor her to the earth. Her tranquil demeanor and connection to the natural world demonstrate her ability to maintain control over her circumstances, ensuring a solid foundation for her future.

In this card, the woman's meditative state represents the importance of cultivating an inner sense of security and control, as well as the desire to maintain and preserve what one has worked hard to achieve. The Four of Pentacles encourages individuals to find balance in their lives by focusing on both material and emotional well-being. By developing a strong sense of self and a healthy attachment to possessions, one can achieve a sense of stability and peace that fosters personal growth. However, the Four of Pentacles also serves as a cautionary reminder of the potential pitfalls of possessiveness and excessive saving. While it is natural to seek security and control, it is essential not to become overly attached to material possessions or to cling too tightly to what one has acquired. This card invites individuals to reflect on their relationship with their belongings, ensuring that they strike a balance between enjoying the fruits of their labor and avoiding the trappings of materialism. By finding equilibrium between security and freedom, one can truly appreciate the abundance that life has to offer.

Five of Pentacles



***HARDSHIP, LOSS, POVERTY,
INSECURITY, ISOLATION***



The Five of Pentacles tarot card features a woman entangled in the grasp of thorny branches, her face contorted with frustration and despair as she cries out for relief. The stark contrast between the lush greenery that surrounds her and the cruel, unforgiving vines that bind her serves as a potent symbol of the themes of hardship and loss. This powerful image embodies the struggles and difficulties that one may encounter in life, as the woman finds herself trapped and isolated, seemingly with no way out of her predicament.

In this card, the woman's entrapment represents the hardships and challenges that individuals may face in their lives, such as financial loss, poverty, or emotional insecurity. The Five of Pentacles is a stark reminder that life is not always smooth sailing, and that everyone will face periods of adversity and struggle. During these times, it is essential to recognize that feelings of isolation and helplessness can be temporary, and that there is always the possibility of finding a way out of even the most difficult circumstances.

However, the Five of Pentacles also offers a message of hope and reassurance. The thorns that bind the woman serve as a reminder that challenges and obstacles can often be overcome through determination and resilience. By acknowledging one's own inner strength and resourcefulness, it is possible to break free from the constraints of hardship and emerge stronger and wiser. This card encourages individuals to persevere in the face of adversity, seek support from others, and maintain faith in their ability to overcome life's challenges, ultimately finding the path towards healing and recovery.

SIX OF PENTACLES



***GENEROSITY, CHARITY, SHARING,
GRATITUDE, BALANCE***



The Six of Pentacles tarot card depicts a serene dryad kneeling in a beautiful autumn field, the warm hues of the season reflecting the generosity and warmth of her spirit. Beside her, a gentle deer gazes upon her with trust, unafraid of her presence. The harmony between the dryad and the deer symbolizes the themes of generosity, charity, and the interconnectedness of all living beings. This card encourages individuals to embrace the virtues of giving and receiving, recognizing the importance of maintaining balance in their lives.

In this scene, the dryad embodies the concept of generosity, as she demonstrates kindness and compassion towards the deer and her surroundings. She is a symbol of the importance of giving to others, be it through material means or emotional support. The Six of Pentacles serves as a reminder that sharing one's resources, time, or energy can bring about a sense of fulfillment and gratitude, as well as strengthening the bonds between individuals and their communities.

Furthermore, the Six of Pentacles emphasizes the importance of balance and reciprocity in one's life. Just as the dryad gives to the deer, she too receives the gift of trust and companionship from the animal. This card teaches us that true generosity is not only about giving but also about being open to receiving help and support from others. By embracing this balance between giving and receiving, one can foster a more harmonious and abundant life, enriched by the connections and relationships formed through acts of kindness and compassion.

SEVEN OF PENTACLES



***PATIENCE, GROWTH, INVESTMENT,
EVALUATION, REWARD***



The Seven of Pentacles tarot card presents a male dryad walking through his lush vegetable garden, taking in the beauty and abundance that surrounds him. The plants are thriving and bearing fruit, reflecting the results of his hard work and dedication. This scene embodies the themes of patience and growth encouraging individuals to recognize the value of perseverance and long-term commitment in their endeavors. The dryad's garden serves as a metaphor for the efforts one invests in their personal and professional lives. Just as the dryad has tended to his plants with care and consistency, the card reminds us that meaningful achievements often require time, patience, and dedication. The Seven of Pentacles encourages individuals to stay focused on their goals and to maintain their commitment to their chosen path, trusting that their efforts will eventually yield the desired results.

Moreover, the card highlights the importance of taking a moment to evaluate one's progress and acknowledge the fruits of one's labor. As the dryad walks through his garden, he takes the time to appreciate the abundance that has resulted from his hard work. This act of reflection and gratitude can be a powerful motivator, instilling a sense of pride and satisfaction in one's accomplishments. The Seven of Pentacles invites individuals to pause and celebrate their achievements, using this positive reinforcement as fuel to continue pursuing their goals with renewed vigor and determination.

Eight of Pentacles



***MASTERY, SKILL, DEDICATION,
PERSEVERANCE, APPRENTICESHIP***



The Eight of Pentacles tarot card features a beautiful dryad standing in the doorway to her home, surrounded by paintbrushes that she uses to beautify and decorate her living space. This scene emphasizes the importance of honing one's abilities and committing to one's craft or passion.

As the dryad diligently works on her home, she demonstrates a strong work ethic and dedication to her chosen art form. This dedication to her craft is not only evident in the time she spends perfecting her skill, but also in her attention to detail and her commitment to transforming her home into a masterpiece. The Eight of Pentacles encourages individuals to take pride in their work, to strive for excellence, and to invest the necessary time and effort to truly master their chosen field.

Furthermore, the card highlights the importance of an apprenticeship mindset, recognizing that there is always more to learn and that growth is an ongoing process. The dryad's commitment to her art suggests that she is always seeking new ways to improve and expand her skills, never resting on her laurels. The Eight of Pentacles invites individuals to approach their work with humility, curiosity, and an eagerness to learn, recognizing that true mastery is a lifelong journey that requires patience, persistence, and dedication.

Nine of Pentacles



***ABUNDANCE, LUXURY, INDEPENDENCE,
SELF-SUFFICIENCY, PROSPERITY***

The Nine of Pentacles tarot card features a beautiful dryad walking down a forest path towards an elegant elven city, seamlessly built into the trees themselves. This breathtaking scene symbolizes abundance, luxury, independence, self-sufficiency, and prosperity, reflecting the rewards that come from hard work, dedication, and wise investments of time and energy.

As the dryad makes her way towards the enchanting city, she exudes an air of confidence and self-assuredness, knowing that she has earned her place in this magical realm. She has worked diligently to cultivate her own sense of self-sufficiency and independence, embracing her unique talents and abilities to create a life of abundance and luxury. The Nine of Pentacles encourages individuals to strive for personal fulfillment and take pride in their accomplishments, recognizing that true prosperity comes from within and is a product of one's own efforts and determination.

The path leading to the elven city, beautifully integrated into the natural world, also signifies the harmonious balance between material wealth and spiritual well-being. The dryad's journey serves as a reminder that true abundance encompasses not just material possessions, but also emotional, mental, and spiritual riches. The Nine of Pentacles invites individuals to cultivate a deep sense of gratitude for the blessings in their lives and to seek out opportunities for growth, self-discovery, and personal fulfillment, ultimately creating a life of prosperity, luxury, and well-being.



TEN OF PENTACLES



LEGACY, WEALTH, FAMILY, SECURITY, ESTABLISHMENT

The Ten of Pentacles tarot card features a group of joyful dryad women gathered around a large wooden table, sharing laughter and enjoying each other's company. The warm, convivial atmosphere of the scene embodies the themes family, security, and establishment, reflecting the joy and fulfillment that come from strong, loving relationships, and the creation of a stable, supportive foundation for future generations.

The dryads' happiness stems from their deep connections to one another and their shared history, illustrating the importance of family and community in building a sense of security and stability. The Ten of Pentacles encourages individuals to invest in their relationships, nurturing the bonds of family and friendship that provide a solid foundation for a rich, fulfilling life. By valuing and prioritizing these connections, one can create a lasting legacy that is cherished and celebrated by future generations. In this card, the wooden table serves as a symbol of the wealth and prosperity that has been built by the dryads through their collective efforts, cooperation, and mutual support. The Ten of Pentacles reminds us that true wealth and security come not just from material abundance, but also from the love, shared experiences, and emotional support found within a strong, close-knit community. As individuals work together to build a stable, prosperous future for themselves and their loved ones, they also create an enduring legacy that will be treasured and passed down through generations to come.

Page of Pentacles



**AMBITION, LEARNING,
OPPORTUNITY, FOCUS, GROWTH**

The Page of Pentacles tarot card features a beautiful dryad standing at the edge of a massive, lush rainforest teeming with abundance. The verdant landscape represents the potential for growth and prosperity that the dryad has at her fingertips. This card embodies the themes of focus and growth, reflecting the energy and enthusiasm of an individual who is eager to explore new possibilities and expand their knowledge and skills.

The dryad's gaze is full of curiosity and determination, signaling a strong desire to learn and an unwavering focus on her goals. The

Page of Pentacles encourages individuals to harness their ambition and to be open to the opportunities that life presents, whether in the form of new projects, career paths, or educational pursuits. By maintaining a strong focus and dedication to personal growth, one can unlock their full potential and transform the fertile landscape of their life into a bountiful, thriving oasis.

The rainforest in the background represents the wealth of resources and opportunities available to those who are willing to invest time and effort in their personal growth and development. As the dryad ventures deeper into the forest, she will encounter challenges and obstacles that will test her resolve and strengthen her character. The Page of Pentacles serves as a reminder that, through perseverance and a commitment to learning, individuals can cultivate the skills and knowledge necessary to achieve their dreams and create a life of abundance and fulfillment.

Knight of Pentacles



***DEPENDABILITY, ROUTINE,
PATIENCE, PERSISTENCE,
RESPONSIBILITY***

The Knight of Pentacles tarot card depicts a powerful male dryad standing in the midst of a rainstorm, a wide smile gracing his face. He uses a large leaf to shield himself from the downpour, demonstrating his resourcefulness and adaptability in the face of unexpected challenges.

This card embodies the qualities of dependability, patience, persistence, and responsibility, reflecting the steadfast and reliable nature of an individual who is committed to seeing their goals through to completion.

The rainstorm represents the inevitable obstacles and setbacks that one may encounter in life, and the dryad's calm and composed demeanor in the face of adversity speaks to his unwavering dedication and determination. The Knight of Pentacles encourages individuals to cultivate patience and persistence in their pursuits, recognizing that success often requires consistent effort and a willingness to work through challenges. By embracing routine and taking responsibility for their actions, one can build a strong foundation for lasting achievement and personal growth.

The large leaf that the dryad uses as a shield symbolizes the importance of resourcefulness and adaptability in navigating life's storms. While the rain may be relentless, the dryad demonstrates that by utilizing the tools and resources available to him, he can weather the storm and continue on his path undeterred. The Knight of Pentacles serves as a reminder that through dependability, patience, and persistence, individuals can overcome challenges and fulfill their responsibilities, ultimately leading to a more stable and prosperous future.

Queen of Pentacles



***NURTURING, ABUNDANCE,
SENSUALITY, PRACTICALITY, PROVIDER***

The Queen of Pentacles tarot card portrays a beautiful older dryad meditating in an underground cavern, surrounded by an aura of serenity and tranquility. Beams of light filter down upon her, illuminating her figure and casting a warm glow throughout the space. A fire crackles nearby, providing warmth and a sense of comfort. This card embodies the qualities of nurturing, and practicality, reflecting the compassionate and supportive nature of an individual who takes care of those around her.

The underground cavern symbolizes the depths of the earth, representing the Queen's grounding energy and her strong connection to the physical world. Her ability to tap into the earth's abundance allows her to create an environment of stability and security for herself and others. The fire that burns beside her represents her sensuality and passion, as well as her commitment to providing for the emotional and material needs of her loved ones. The Queen of Pentacles encourages individuals to embrace a nurturing and compassionate approach to life, recognizing the importance of caring for themselves and others in order to create a foundation for lasting abundance and well-being.

The beams of light filtering down onto the dryad signify divine guidance and support, highlighting the Queen's connection to both the spiritual and material realms. Her ability to balance these aspects of her life speaks to her practical nature and wisdom in managing her resources effectively. The Queen of Pentacles serves as a reminder that through nurturing, abundance, and practicality, individuals can create a life of harmony and stability, providing a safe haven for themselves and those they care for.

King of Pentacles



***STABILITY, SECURITY, LEADERSHIP,
ABUNDANCE, BUSINESS ACUMEN***

The King of Pentacles tarot card features a powerful dryad seated upon a majestic golden throne crafted from nature's finest trees and leaves. Surrounded by the beauty and abundance of nature, he embodies the qualities of stability, leadership, and abundance. As a ruler who has achieved material success and prosperity, the King of Pentacles symbolizes a figure who leads with wisdom and skill, ensuring the well-being and growth of his kingdom.

The golden throne crafted from trees and leaves represents the King's deep connection to the natural world, as well as his ability to harness its resources to create wealth and prosperity. This connection highlights his practical and grounded approach to life, underlining his ability to make sound decisions and manage resources effectively. The verdant surroundings emphasize the fruits of his labor and his success in creating an environment of abundance and security for both himself and his people. The King of Pentacles serves as an inspiration for individuals to strive for financial stability and success while maintaining a strong connection to the earth and its resources.

As a leader, the King of Pentacles demonstrates the importance of being responsible, reliable, and focused on the well-being of those under his care. His business acumen and strategic mindset enable him to create opportunities for growth and success, while his stable and secure nature ensures that he remains grounded and true to his values. The King of Pentacles encourages individuals to develop their own leadership skills, cultivate a strong work ethic, and embrace the wisdom of the natural world in order to achieve lasting abundance and prosperity.

The Ace of Swords tarot card depicts a tiny fairy courageously shattering through a stained glass window, bravely seeking her freedom.

This action symbolizes the clarity and truth that can cut through confusion, revealing the path forward. The glass, once a barrier, is now a doorway to new possibilities, allowing the fairy to pursue her newfound ideas and embrace the breakthrough she has achieved.

The vibrant colors of the stained glass represent the mental focus needed to overcome obstacles, while the shards of glass flying around the fairy emphasize the power of truth and the determination required to achieve it. The fairy's escape highlights the importance of breaking free from limiting beliefs and embracing the freedom that comes from clear thinking and decisive action.

In a reading, the Ace of Swords encourages the seeker to embrace new ideas and trust in the power of their mental faculties. It signals a time of mental clarity and truth-seeking, urging one to break through barriers and limitations, achieving breakthroughs in their thought processes and understanding. This card is a powerful reminder that with determination, focus, and the courage to face the truth, one can break free from the constraints that have held them back and soar towards new heights.

Ace of Swords



**CLARITY, TRUTH, NEW IDEAS,
BREAKTHROUGH, MENTAL FOCUS**

The Two of Swords tarot card features a beautiful fairy standing on the edge of an autumn field, contemplating two paths that lead into the distance. She faces a critical decision, unsure of which path to choose, as both seem equally appealing. This scene represents the crossroads the seeker may face in their life, with the need to make a choice between two equally compelling options, creating tension and indecision.

The fairy's stance, poised between the two paths, symbolizes the balance needed to weigh the pros and cons of each choice carefully. The autumn setting adds to the atmosphere of change and transition, emphasizing the importance of making a decision before the opportunity slips away. The colors of the fall foliage represent the potential beauty and growth that can come from making a wise choice, but also the necessity of letting go of one path to embrace the other.

In a reading, the Two of Swords suggests that the seeker may be experiencing a stalemate or indecision in their life. They may be torn between two equally appealing options or caught in a situation where they must make a difficult decision. This card encourages the seeker to consider their choices carefully, seeking balance and wisdom in their decision-making process. Ultimately, the Two of Swords reminds us that we must face our crossroads and make a choice, even if it means leaving something behind to move forward.

Two of Swords



**INDECISION, BALANCE, STALEMATE,
TENSION, CROSSROADS**



The Three of Swords tarot card depicts a beautiful young fairy lying crumpled on the ground, her tears streaming down her face as lightning flashes ominously in the distance. This card represents the intense emotions that come with heartbreak, grief, and separation. The stormy sky and the fairy's overwhelming sorrow symbolize the pain and loss that can occur in our lives, whether through the end of a relationship, the loss of a loved one, or the shattering of a dream.

The powerful imagery of the Three of Swords serves as a reminder that sorrow and loss are inevitable parts of life, and that these emotions can bring about deep personal growth and transformation. The lightning in the background signifies the sudden and unexpected nature of these experiences, which often come as a shock to us, forcing us to reevaluate our priorities and our sense of self. As we navigate through these difficult emotions, we are reminded of our own resilience and the strength that can be found in vulnerability.

Despite the pain and heartache depicted in this card, the Three of Swords also carries a message of hope. The storm will eventually pass, and in its wake, new beginnings and healing will emerge. This card encourages us to face our emotions and work through our grief, trusting that we will come out stronger on the other side. It's a reminder that while loss and sorrow are inevitable, they also bring with them the opportunity for growth, self-reflection, and ultimately, healing.

Three of Swords



**HEARTBREAK, GRIEF,
SEPARATION, SORROW, LOSS**

The Four of Swords tarot card features a male fairy standing atop a massive stone cliff, gazing out at the horizon as the sun sets in the distance. In the backdrop, a raging tornado looms, symbolizing the chaos and turmoil of life. This card represents the need for rest, contemplation, and meditation in order to regain balance and perspective amidst the storms that life can bring. The fairy's serene demeanor amidst the chaos serves as a reminder to retreat and find solace in moments of quiet reflection.

The Four of Swords emphasizes the importance of taking a step back from the demands and stresses of everyday life to recharge and replenish our energy. The cliff represents the stability and security that can be found in solitude, providing a space for introspection and self-discovery. By allowing ourselves time for mental and emotional recovery, we can gain a deeper understanding of our thoughts, emotions, and inner desires, enabling us to better navigate the challenges that life presents.

The tornado in the background of the Four of Swords serves as a reminder that life's challenges are inevitable, but by taking time to retreat and reflect, we can weather the storm and emerge stronger and more resilient. The setting sun signifies the cycle of life and the promise of a new beginning, symbolizing that even the most turbulent times will pass, and a new day will dawn. This card encourages us to prioritize self-care and inner peace, recognizing that only by nurturing our own well-being can we face life's challenges with grace and strength.

Four of Swords



**REST, CONTEMPLATION,
MEDITATION, RETREAT, RECOVERY** **57**

The Five of Swords card depicts a powerful and striking fairy wizard, her wings aglow, striding forth confidently amidst a foggy city. Her wand is ablaze with magical sparks, painting a stark contrast between the dim city and her radiant presence. This card is emblematic of conflict, defeat, tension, betrayal, and loss, serving as a stark reminder of the tumultuous battles we sometimes face in life, and the resulting emotional turmoil.

In the heart of the city, enveloped by a fog of uncertainty, the fairy wizard moves forward undeterred. This setting symbolizes the tension and confusion that often accompany conflict and betrayal. The sparks flying from her wand signify the chaos of a clash, the sparks of heated words and deeds that might have led to defeat or a sense of loss. However, her confident stride and the strength reflected in her gaze suggest an unwavering resolve, an unwillingness to be completely defeated, and a readiness to confront the conflicts that lie ahead.

Yet, this card also serves as a cautionary tale against the pursuit of victory at all costs. The magical sparks, while visually captivating, also hint at a potential risk of leaving a trail of destruction in one's wake. The card suggests that the real victory lies not in overpowering others, but in navigating through these conflicts with wisdom and understanding, learning from the experiences, and moving forward. It encourages us to approach our battles with a balanced perspective, understanding the cost of our actions, and making decisions that lead to harmony rather than further discord. In essence, the Five of Swords invites introspection during times of conflict and tension, urging us to seek solutions that bring about growth and understanding rather than fostering more tension and loss.

Five of Swords



**CONFLICT, DEFEAT, TENSION,
BETRAYAL, LOSS**

The Six of Swords card portrays a serene scene of a beautiful young fairy, wings faintly illuminated, meditating in a field bathed in the soft glow of a myriad of fireflies. The warm light from these delicate creatures dances around her, mirroring the inner light of transition, healing, and moving forward that this card embodies. In this tranquil setting, the fairy is the epitome of peaceful acceptance of change, her closed eyes and serene expression reflecting a soul in the process of healing and transition.

As she sits in quiet contemplation amidst the enchanting fireflies, her surroundings seem to echo her inner journey. The field of glowing lights represents her transition and journey from a place of turmoil to one of peace and acceptance. Each firefly can be seen as a beacon of hope, guiding her through her healing process, their glow symbolic of the change that is taking place within her. The field of fireflies and the fairy's meditative state together symbolize the process of moving forward, of leaving behind what no longer serves her and embracing the transformative power of change.

However, the Six of Swords is not just about personal transformation. It's also about the journey that we all take as we navigate the challenges and changes life presents us. This card gently reminds us that healing takes time and patience, that moving forward often requires us to let go of the past, and that change, while often daunting, is a natural and necessary part of life. In the glow of the fireflies, we are reminded that even in the face of transition and change, there is beauty to be found and peace to be attained. The Six of Swords encourages us to embrace our journey, and to trust in the healing power of change and the promise of brighter days ahead.

Six of Swords



**TRANSITION, HEALING, MOVING
FORWARD, JOURNEY, CHANGE**



The Seven of Swords tarot card presents a stark and powerful image: a formidable fairy standing defiantly in front of a volcanic wasteland, his ethereal wings backlit by the ominous glow of molten lava. The blazing landscape represents the aftermath of a strategic move, a vivid symbol of the cunning, guile, and deception embodied by this card. His fierce expression and unyielding stance convey the ruthless determination and strategic mind behind his actions, and the destructive forces at play are a potent reminder of the consequences of deception.

As he stands amidst the desolation wrought by the volcanic eruptions, his silhouette is a beacon of cunning and stealth. The volcanoes that have ravaged the land behind him signify the disruptive power of guile, a testament to the hidden forces of strategy and stealth. The fiery backdrop serves as a grim testament to the destructive potential of deception, warning of the danger that often accompanies underhanded tactics and surreptitious strategies.

However, the Seven of Swords also carries a cautionary message. The volcanic wasteland, a stark reminder of the aftermath of deception, serves to caution us against resorting to deceit or cunning to achieve our goals. The scorched landscape is a potent symbol of the long-term consequences of dishonesty, urging us to consider the potential fallout of our actions. Despite the fairy's defiant stance, the card urges us to question the wisdom of manipulation and deceit, and to consider the value of honesty and transparency in our dealings. It serves as a reminder that while strategy and cunning might bring temporary victories, true success comes from integrity and honesty.

Seven of Swords



**DECEPTION, STRATEGY, STEALTH,
CUNNING, GUILE**

The Eight of Swords presents a deeply evocative scene: a young, frail fairy ensnared in a field of mud. She is trapped, her delicate wings rendered useless by the mire, symbolizing restriction and limitation. As she squirms and flutters in vain, her struggles only serve to draw her deeper into the mire, a poignant metaphor for self-imprisonment. The mud, clinging stubbornly to her wings, echoes the feelings of isolation and confinement often associated with this card. Her fruitless struggle against her muddled confines is a reflection of the futile battle against our self-imposed limitations.

The fairy's futile efforts to free herself serve as a powerful symbol of the self-imposed restrictions we often place upon ourselves. As she thrashes about, the mud splatters and sticks, representing the way we often exacerbate our own problems when we act out of panic or desperation. This scene reminds us that often, the bonds that hold us are of our own making, and that the key to freedom lies not in struggling against these perceived limitations, but in recognizing and challenging the beliefs and fears that put us there in the first place.

The Eight of Swords also carries a note of hope amid the struggle. Despite the seeming hopelessness of her situation, the fairy's determination to free herself speaks to the potential for liberation that lies within each of us. The card encourages introspection and the challenging of self-limiting beliefs. It invites us to examine our circumstances, to recognize the mud we are mired in, and to understand that while we may feel trapped or restricted, these feelings often stem more from our perceptions than our actual circumstances. The card offers a powerful reminder: we possess the ability to free ourselves from the mud, to clean our wings, and to fly again.

Eight of Swords



**RESTRICTION, ISOLATION, LIMITATION,
SELF-IMPRISONMENT, TRAPPED**

In the haunting depiction of the Nine of Swords, a young male fairy is seated, deep in contemplation. His face is a study of anxiety and worry, his usually bright eyes dimmed with the weight of his thoughts. The luminous glow that typically surrounds him is muted, a clear reflection of his inner turmoil. His clenched hands and furrowed brow give tangible form to the mental stress he's grappling with, his physical form resonating with his tormented psyche. The image is a poignant embodiment of fear and depression, reflecting the anguish that can arise from our own thoughts and worries.

An ominous shadow lurks just behind him, an amorphous embodiment of fear that hovers and waits. It is an insidious presence, always at the edge of his awareness, representing the anxieties and worries that often plague our subconscious. This shadow is not an external enemy but a creation of his own mind, a manifestation of his internal struggle. The fairy's surroundings are dark and oppressive, enhancing the feelings of dread and insecurity. The looming shadow is a powerful symbol of the overwhelming stress and fear that can consume us when we allow our anxieties to take hold.

Yet within this scene of despair, the Nine of Swords also carries a potent message. The very fact that the evil presence is merely a shadow, without form or substance, suggests that our fears and anxieties are often inflated by our own minds. The young fairy's struggle is a reminder that while our worries can indeed feel overwhelming, they are often born more from our perception than reality. It encourages us to confront our fears, to step out of the shadows of our own making, and to recognize that our worries, no matter how daunting, can be faced and overcome. It is a card that, despite its somber presentation, ultimately speaks to the resilience and strength within us all.

Nine of Swords



**ANXIETY, WORRY, FEAR,
DEPRESSION, STRESS**

The Ten of Swords portrays a scene of intense conflict between two fairies, their delicate forms and beautiful dresses contrasting sharply with the violence of their struggle. Their faces are twisted in anger and pain as they clash, their dazzling wings fluttering in the chaos. The intricate designs of their dresses swirl around them, the once stunning garments now serving as the backdrop for a heartbreaking betrayal. The vibrant colors of their attire, usually a symbol of joy and celebration, are now a stark reminder of the happiness they once shared. This image vividly captures the harsh reality of endings and loss, the abrupt and brutal collapse of a once cherished relationship.

The setting around them echoes the tumultuous fight, the usually serene fairy realm transformed into a battlefield. The beautiful flora and fauna are upturned and chaotic, mirroring the internal turmoil of the fairies. The stark contrast between the beauty of their surroundings and the violence of their actions is a poignant symbol of the devastation that betrayal and defeat can bring.

However, within this tableau of destruction and despair, there is a glimmer of hope. The Ten of Swords, despite its grim portrayal, also carries the promise of new beginnings. The conflict, as brutal as it is, signifies the end of a chapter, a painful but necessary step towards closure. The loss and defeat represented here are not the end, but rather, the start of a new journey. It's a painful reminder that sometimes, we must experience the depths of betrayal and the sting of loss to truly understand and appreciate the strength within us, and the promise of a brighter tomorrow.

Ten of Swords



**BETRAYAL, ENDINGS, LOSS,
COLLAPSE, DEFEAT**

The Page of Swords is represented by a young fairy, his body alight with the energy of youth and potential. He soars effortlessly through the clouds, his wings glistening with dewdrops and shimmering in the warm sunlight. His eyes sparkle with an insatiable curiosity, mirroring the vast, open sky that embodies his boundless mental agility. With a sense of playful fearlessness, he dives and swoops, exploring the world from a perspective that few others can. His youthful exuberance and boundless energy are evident in every movement, a testament to his natural ability for exploration and learning.

His surroundings reflect his inner state - the sky around him is wide and clear, symbolic of his open mind and readiness to absorb new information. The warm sunlight highlights his path, leading him towards new discoveries and adventures. The clouds, instead of hindering his journey, become stepping stones, facilitating his navigation through the vast expanse of the sky. This setting vividly showcases his exceptional communication skills, as he seamlessly interacts with the elements around him.

Yet, there is more to this fairy than just his youthful energy. The Page of Swords, despite his youth, shows a maturity beyond his years. His flight through the sky is not aimless, but guided by a sense of purpose. His exploration is driven by a desire for knowledge and understanding, and his soaring represents his aspiration to reach higher levels of consciousness. He does not shy away from the challenges that may come his way, but meets them with mental agility and resilience. Through his journey, he embodies the essence of the Page of Swords - a symbol of curiosity, communication, learning, and exploration.

Page of Swords



**CURIOSITY, MENTAL AGILITY,
COMMUNICATION, LEARNING,
EXPLORATION**

The Knight of Swords is embodied in a powerful fairy, a figure of strength and vitality. He stands at the edge of reality, the portal to the universe shimmering behind him, casting a majestic aura of infinite possibilities. His gaze is locked onto the horizon, a testament to his ambition and determination. His wings flutter impatiently, ready to spring into action, the very embodiment of dynamic energy and calculated haste.

His surroundings mirror his intrinsic characteristics. The portal behind him signifies the vast expanse of his ambitions, his readiness to traverse dimensions to achieve his goals. The pages of knowledge surrounding him are a testament to his intellectual hunger and his quick-thinking ability. They swirl in the cosmic wind, following the rhythm of his thoughts, mirroring his ability to juggle multiple ideas and strategies simultaneously. His focus is palpable, the intense look in his eyes speaking volumes of his single-minded pursuit.

However, the Knight of Swords is not just a figure of brute strength or mindless action. He is a strategic thinker, his quick wit and sharp intellect guiding his actions. His determination fuels his ambition, but it is his focus that shapes it, guiding him on the path to his goals. His actions are not impulsive but the result of calculated decisions, a reflection of his exceptional problem-solving skills. His presence is a testament to the power of action when guided by ambition, focus, quick thinking, and unwavering determination.

Knight of Swords



**ACTION, AMBITION, FOCUS, QUICK
THINKING, DETERMINATION**

The Queen of Swords emerges as a beautiful fairy queen, holding her child close, radiating warmth and love. Her radiant smile, reflecting the wisdom of her years, softens the stern countenance of her royal demeanor. She is resplendent in her attire, a shimmering tapestry of ethereal fabrics that cascade around her like a waterfall of light. Her wings shimmer in the celestial glow, a testament to her spiritual and intellectual strength. As she gently cradles her child, her eyes speak volumes of the clarity and wisdom that guide her rule.

Her child, swaddled in her arms, is a symbol of her independence and strength. She is a matriarch, a leader who governs with a clear mind and a compassionate heart. Her wisdom is her guiding light, and she imparts it freely to her child, nurturing them with the knowledge and understanding that only life experience can bring. Her gaze, steady and clear, reflects her realistic view of the world. She is not blinded by illusion or idealism, but sees things as they are, applying her intellect to navigate the intricate web of life.

The Queen of Swords is not just a queen by title, but a queen by nature. Her royal bearing is a testament to her intellectual prowess, her clear vision shaping her kingdom's destiny. She embodies the balance between wisdom and realism, using her intellectual capacity to guide her decisions and actions. Her independence shines through in her self-assured posture, her strength visible in the way she confidently holds her child. Her presence is an affirmation of the power of wisdom, clarity, independence, realism, and intellect.

Queen of Swords



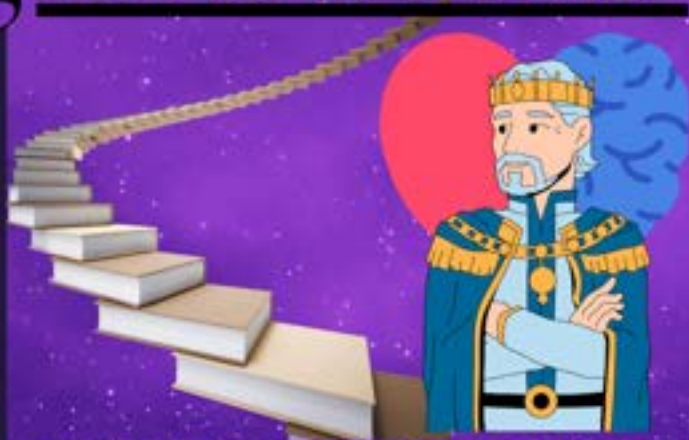
**WISDOM, CLARITY, INDEPENDENCE,
REALISM, INTELLECTUAL**

The King of Swords is a regal figure, a powerful fairy king who radiates authority and wisdom from his pastel throne of platinum. His handsome features are drawn into an expression of deep thought, reflecting his intellectual power and rational nature. Draped in rich purple fabric, symbolic of his royal status, he emanates a sense of calm and authority that fills the room. His wings, like glistening shards of crystal, extend majestically behind him, a physical manifestation of his elevated status and power. In his lap sits his young son, held securely in the firm but tender grip of his father's arms, a symbol of his role as a leader and protector.

His rational nature is evident in his steady gaze, his eyes focused on the horizon, anticipating the future with clarity and objectivity. His leadership is not ruled by emotion or impulse, but by a clear understanding of facts and logical reasoning. As he holds his son, he instills in him these same values, preparing the young fairy for the responsibilities that come with power and leadership. His reign is one of intellectual guidance, his decisions informed by deep thought and careful consideration, demonstrating the power of rationality and objectivity in leadership.

The King of Swords represents intellectual power in its highest form. His authority is derived not from brute force, but from a sharp mind and an objective perspective. His leadership style inspires respect and confidence, his decisions guided by a steadfast commitment to truth and justice. As he prepares his son for the future, his actions reflect his belief in the power of the mind, and the importance of rationality and objectivity in ruling. His presence is a powerful reminder of the importance of authority, rationality, objectivity, leadership, and intellectual power.

King of Swords



**AUTHORITY, RATIONALITY, OBJECTIVITY,
LEADERSHIP, INTELLECTUAL POWER**



Ace of Wands

→ believe →



**INSPIRATION, CREATION,
BEGINNINGS, POTENTIAL, PASSION**

The Ace of Wands tarot card depicts a robust dwarf, standing steadfast in the heart of a frozen field, as the chill winds swirl around him. This dwarf is the embodiment of hard work, his thick arms crossed over his chest in a stance of determination. His bearded face is weathered from a lifetime in the mountains, yet his eyes gleam with a fiery passion that lights up the icy landscape. His hearty resilience against the cold is a symbol of his unyielding spirit, his refusal to be deterred by harsh conditions serving as a beacon of inspiration and creation.

The dwarf, though situated in a landscape that might seem desolate to some, exudes a powerful passion that is palpable. It is clear that he has chosen this place, this moment, to make his stand. The passion in his eyes speaks of a burning desire to create, to build, to ignite. It is this passion that fuels his resolve, that powers his potential, and that promises the dawn of a new beginning. Through his journey, the Ace of Wands card invites us to tap into our own reservoirs of passion, to embrace our potential, and to fearlessly embark on our unique paths of creation.

Despite the harsh environment, the dwarf's eyes are filled with inspiration, hinting at the creative force that drives him. The stark contrast between the cold surroundings and his fiery spirit signifies the transformative power of passion, the catalyst for change and the birth of new ideas. The dwarf is ready to embark on a journey to manifest his dreams and visions, fueled by the energy and inspiration of the Ace of Wands.



Two of Wands



***PLANNING, FUTURE, PROGRESS,
DECISIONS, DISCOVERY***

The Two of Wands tarot card features a beautiful female dwarf, resiliently traversing the frozen landscape that stretches out before her.

Despite the harsh conditions, she carries a backpack with determination, symbolizing her readiness for the journey ahead. The icy terrain mirrors the uncertainty of the future, but rather than being deterred, she uses it as a motivator to plan and prepare. This card captures the essence of planning, of looking ahead, and making the necessary preparations for what lies beyond the horizon.

Her eyes, filled with resolve and curiosity, scan the horizon as she contemplates her path forward. She understands that every decision she makes now will shape her future, and so she moves with thoughtfulness and purpose. The backpack she carries is filled with tools and resources she might need, representing her readiness to meet challenges head-on. The Two of Wands signals progress, reflecting her ongoing journey of discovery and her determination to succeed.

This card serves as a reminder of the importance of planning and foresight in navigating our lives. Like the dwarf, we are called to prepare for the future, make informed decisions, and embrace the journey of discovery that life presents us. The frozen landscape is not a deterrent, but rather a reminder of the rewards that come from perseverance and careful planning. The Two of Wands encourages us to forge ahead with confidence, driven by our passion for discovery and the thrill of what lies ahead.



Three of Wands



The Three of Wands tarot card features a dwarf, armored and formidable, striding purposefully through an ancient forest. As he treads forward, beams of sunlight filter through the canopy, casting him in an ethereal glow. His gaze is unwavering, his stance resolute - this is a being well-prepared and ready for the journey ahead. The dwarf's armor is a testament to his readiness for any challenges he might face, symbolizing his foresight and readiness for the future. This card speaks volumes of preparation, a crucial aspect in navigating through life's many stages.

The ancient trees surrounding him stand tall and grand, acting as silent witnesses to his journey. They symbolize the passage of time and echo the theme of expansion, reflecting the dwarf's personal growth and maturation. The radiant beams of light that fall upon him signify opportunity, the chance encounters and possibilities that await him in his journey. The Three of Wands tells us that while the road may be long, the rewards are plentiful for those willing to embrace the journey. The card concludes with a reminder of the importance of foresight and preparation. The dwarf, though armored, is not on the defensive, but rather, he is poised for exploration and travel. He is ready to seize opportunities as they present themselves. The Three of Wands encourages us to cultivate a similar readiness, to step out of our comfort zones and explore the world beyond, to prepare for the future and to be open to the opportunities that come our way.



Four of Wands



The Four of Wands tarot card depicts a handsome dwarf, exuding joy as he hoists a chalice high in celebration. He stands within the grandeur of his castle home, the warmth and security of his surroundings reflecting the essence of the card—celebration and harmony. His eyes sparkle with a sense of accomplishment, acknowledging the fruits of his labor and the joy of his achievements. This card signifies the moments of joy that come from realizing personal goals, the pleasure of celebration, and the harmony that comes with success.

The dwarf's home, a grand castle, stands as a symbol of stability and security. It is a testament to the fruits of hard work, the rewards reaped from resilience and determination. It implies the importance of having a secure and harmonious place to call home, suggesting a sense of community and belonging. The Four of Wands is a reminder of the joys found within our own homes and the peace that comes from feeling safe and secure.

Lastly, the chalice held high by the dwarf signifies not just celebration, but the joy of communal celebration. It brings to mind images of toasts made in honor of achievements, symbolizing communal recognition and shared happiness. The chalice could also be a symbol of marriage, a communal celebration that signifies a new chapter in one's life. The Four of Wands, therefore, serves as a reminder to celebrate our achievements, to appreciate our homes and communities, and to share our joy with those around us.

Five of Wands



**COMPETITION, CONFLICT, TENSION,
DIVERSITY, UNCERTAINTY**

The Five of Wands tarot card presents a vibrant scene of competition in the heart of a dwarven city. Two armored dwarves are locked in combat, their every move eliciting roars of anticipation from the crowd that has gathered to witness their clash. The energy is palpable, a swirling vortex of tension and uncertainty. Their battle is fierce, not out of malice, but in the spirit of competition, a testing of strength and skill against each other. This card encapsulates the essence of competition and conflict, the uncertainty and tension that arise when different forces collide. The two dwarves, their expressions focused and determined, represent the inherent diversity in any form of contest. They hail from different backgrounds and carry unique strategies and techniques, their differences fueling the excitement of the competition. Their individuality is a testament to the diverse approaches towards a common goal, adding an extra layer of complexity to the struggle. It symbolizes that, in life, conflict often arises from diversity, and it is through these challenges that we grow and refine our abilities. The crowd, cheering and invested in the outcome, further amplifies the sense of tension and uncertainty. The spectators embody the external pressures that often accompany competitive situations, their cheers a constant reminder of the high stakes at hand. Yet, their presence also signifies a communal appreciation for the art of competition, the shared understanding that through these trials, individuals are shaped, and heroes are born. The Five of Wands, therefore, speaks to the challenges and conflicts we face in life, reminding us to stand firm, embrace our individuality, and respect the diversity of others.



Six of Wands



**SUCCESS, VICTORY, ACHIEVEMENT,
RECOGNITION, PROGRESS**

The Six of Wands tarot card depicts a triumphant moment set against the backdrop of a dwarven army. At the center, a radiant dwarf in golden armor raises a trophy, symbolizing her victory. Her face is alight with the thrill of success, and the gleam in her eyes is reflected in the shining metal of her armor and the trophy she holds. The energy around her is electric, a testament to her achievement and the progress she has made. This card embodies the concepts of success, victory, and achievement, serving as a reminder of the rewards that come with determination and hard work.

Surrounding the victorious dwarf is an array of fellow warriors, their faces filled with admiration and respect. Their gazes are focused on the trophy, a tangible symbol of their comrade's success. The recognition she receives from her peers adds weight to her victory, validating her effort and struggle. This element of the card highlights the importance of recognition in one's journey, illustrating how acknowledgment from others can serve as a powerful motivator and a source of fulfillment. The triumphant scene depicted in the Six of Wands not only symbolizes a personal victory but also represents progress on a larger scale. The victorious dwarf is not alone; she is part of an army, and her success is a testament to their collective strength and resilience. This sense of shared achievement adds another layer of meaning to the card, reminding us that our victories are often interwoven with the successes of others. The Six of Wands, therefore, encapsulates the joy of success, the validation of recognition, and the collective progress that comes with victory.

Seven of Wands



**CHALLENGE, COMPETITION, PROTECTION,
PERSEVERANCE, PERSISTENCE**

The Seven of Wands card captures a moment of relentless determination and unwavering resolve. In the midst of a harsh and expansive frozen tundra, a single dwarf strides forward, his face set in a determined scowl that speaks volumes about his resolute spirit. His body language exudes a powerful confidence, a testament to his strength and endurance. He is on a mission, and nothing will deter him from his path. This card embodies the concepts of challenge, competition, and protection, serving as a powerful reminder of the rewards that come from perseverance and persistence.

The dwarf's determined stride and the harsh landscape he traverses reflect the challenges he faces. Each step is a testament to his resilience, each breath a symbol of his unwavering resolve. His journey is not an easy one - the frozen tundra is a formidable adversary, a constant challenge that tests his endurance. Yet he persists, driven by an inner fire that refuses to be extinguished. This element of the card highlights the importance of protecting one's ambitions and goals, even in the face of seemingly insurmountable challenges.

The Seven of Wands not only symbolizes personal strength but also emphasizes the power of persistence. The relentless determination of the dwarf serves as a reminder that persistence often leads to success. Despite the odds stacked against him, the dwarf presses on, undeterred by the icy winds and challenging terrain. His perseverance is his armor, his persistence his weapon. In the face of competition and challenge, the dwarf's unyielding spirit shines through, reminding us that our own strength and determination can help us overcome any obstacle that stands in our way.

Eight of Wands



***SPEED, ACTION, AIR TRAVEL,
MOVEMENT, SWIFT CHANGE***

The Eight of Wands tarot card represents a world in motion and the swift pace of change. In a quiet corner of his vast library, a handsome dwarf smiles as he reads a letter by the warm light of a flickering candle. The scene is serene, yet there's an undercurrent of anticipation and excitement in his eyes. The dwarf is surrounded by tall shelves filled with ancient tomes, the embodiment of knowledge and wisdom, but it is the letter in his hands that captures his attention. It is a symbol of communication, a sign of unexpected news or swift changes coming his way. The card embodies the concepts of speed, action, and swift change.

The scene in the library indicates a sense of immediate action. The dwarf, usually engrossed in books and the wisdom of the ages, is now focused on the present moment, his attention drawn by the letter's contents. This shift suggests a rapid movement from the past to the present, emphasizing the card's theme of speed and swift change. It could be a sign of a surprise communication or a sudden shift in plans, propelling the dwarf into new experiences and adventures. This represents the card's theme of air travel, symbolizing a journey that might be physical or metaphorical, but is always swift and transformative.

Finally, the Eight of Wands card speaks to the speed at which life can change. Like the candle light flickering in the library's quiet, the dwarf's world is constantly in motion, always shifting and changing. The arrival of the letter symbolizes this continual flux, the unexpected twists and turns that shape our lives. It serves as a reminder that life is a series of swift changes and that we must be ready to adapt and move with them. It emphasizes the need for action and the ability to adapt quickly to new situations. The Eight of Wands is a card of swift movement, urging us to embrace the fast-paced nature of life and to seize the opportunities that come our way.

Nine of Wands



***RESILIENCE, COURAGE, PERSISTENCE,
TEST OF FAITH, STAMINA***

The Nine of Wands tarot card represents a testament to resilience, courage, and the human spirit's unyielding persistence. The scene showcases an armored dwarf standing resolute and unyielding as a hail of flaming arrows rain down. His shield is at the ready, a bulwark of protection for not just himself, but his family and home. His face is a mask of determination and resolve, a visual testament to the strength and courage within him. Amid the chaos and danger, his firm stance suggests an unwavering faith in his ability to endure and protect. This card embodies the themes of resilience and courage, representing the strength we find within ourselves during testing times.

This tarot card also represents a test of faith. The flaming arrows are a clear symbol of adversity and challenge. The dwarf, however, stands tall in the face of these trials, his trust in his own abilities, and faith in his cause unwavering. His grounded stance amidst the chaos around him signifies not only physical stamina but also the mental and emotional strength required to face and overcome adversity. It's about the grit and determination we harness when we are challenged and tested.

Lastly, the Nine of Wands is about persistence and stamina. The dwarf's steadfast position, shield raised high, and the determination etched on his face convey a clear message: he will not back down. Despite the onslaught, he remains resolute, his resolve fueled by the love and duty he has for his family and home. This scene is a clear representation of the resolve it takes to continue pushing through difficulties, to stand firm in our beliefs, and to persist no matter how hard the wind blows.

This card is a testament to our ability to withstand life's trials, a reminder of our strength, resilience, and unyielding spirit.

Ten of Wands



The Ten of Wands tarot card captures a moment of achievement, but one that comes with significant responsibility and burden. The scene features a powerful dwarf, his muscles straining as he hefts an enormous bounty of precious stones. His face is a mixture of triumph and exhaustion, a testament to the fruits of his labor, but also the toll it has taken. He trudges through the snow, his homeward journey arduous, the weight of his treasure a physical embodiment of the responsibilities he bears. The card signifies the completion of a task or journey, but it also highlights the burdens and responsibilities that come with achievement.

This card is also a metaphor for the burdens we bear in life, the heavy responsibilities that come with success, and the extra hard work we put into achieving our goals. The dwarf's struggle under the weight of the precious stones symbolizes the extra responsibilities that come with success. His journey through the snow represents the challenges and obstacles we face in our path to success, and his determined face shows the resolve required to carry such burdens. His strength and endurance are put to the test, but his resolve remains unbroken.

Lastly, the Ten of Wands represents the culmination of hard work and the realization of goals. Despite the burden, the dwarf continues on his path, his eyes set on his destination - home. It illustrates the fact that all our efforts and hard work lead us to our goals, no matter how heavy the burden or how long the journey. The dwarf's journey is symbolic of our own paths in life, and his treasure serves as a reminder that the fruits of our labor are worth the weight we carry. This card is a symbol of endurance, responsibility, and the completion of a long journey or task.

Page of Wands



**ENTHUSIASM, EXPLORATION, DISCOVERY,
FREE SPIRIT, ADVENTURE**

The Page of Wands tarot card depicts a scene of pure joy and childlike wonder. A young dwarf girl, her cheeks rosy from the cold, is caught in a moment of pure exhilaration as she darts through the snow. In her hands, she holds two torches, their tips spouting fire that contrasts brilliantly against the snowy backdrop. Her laughter echoes through the silent winter forest, a symbol of her infectious enthusiasm and spirit.

Her fiery wands blaze a path forward, illuminating her journey with warmth and light. This card signifies a free spirit, a boundless enthusiasm for life, and the thrill of exploration and discovery. The young dwarf represents the spirit of adventure and independence.

Her torches not only light her way but also symbolize her burning passion for exploration and discovery. The fire they produce is a metaphor for the energy, enthusiasm, and zest for life that the Page of Wands embodies. The freedom with which she runs, her laughter ringing through the snow-covered landscape, portrays a spirit unbound by constraints, expressing her joy and curiosity without restraint. This card reminds us of the importance of embracing our inner child, of maintaining our curiosity, and of the joy that can be found in the exploration and discovery of the world around us.

Finally, the Page of Wands speaks to the power of independence. Even though she is young, the dwarf girl is unafraid to explore on her own, to chart her own path. Her torches serve as both a tool and a symbol of her self-reliance, her ability to create her own light and warmth in the chill of the snow. This card is a reminder to embrace our independence, to trust in our own abilities, and to blaze our own trail with enthusiasm and joy.

Knight of Wands



**ENERGY, PASSION, LUST,
ACTION, ADVENTURE**

The Knight of Wands tarot card presents a scene of intense activity and unrelenting dedication. A hardworking dwarf stands in the heart of an underground cavern, his face glistening with sweat as he toils amidst the primal forces of the earth. Lava flows past him, a river of molten rock that provides a backdrop of fiery intensity. His eyes gleam with an inner fire that rivals the glow of the molten rock, the energy and passion he brings to his work radiating from him as palpably as the heat from the lava. This card signifies energy, passion, inspired action, adventure, and impulsiveness.

The dwarf represents the embodiment of energy and passion. His every movement is infused with a vibrant intensity that speaks to his commitment and dedication. The lava flowing past him mirrors his inner fire, creating a visual metaphor for the heat of his passion and the energy he pours into his work. This isn't just manual labor; it's inspired action, a task undertaken with enthusiasm and zeal. His work in the cavern is more than just an adventure, it's a testament to his spirit, a tangible product of his passion and energy.

Finally, the Knight of Wands card speaks to the concept of impulsiveness. Even in the face of such a dangerous environment, the dwarf works without hesitation, his actions dictated by his passion and energy. He takes risks, puts himself in the face of danger, all in pursuit of his goals. He doesn't stop to second-guess or doubt; he simply acts. This card serves as a reminder of the power of inspired action and the adventures that can be found when we allow our passions to guide our actions, even if it leads us to act on impulse.

Queen of Wands



***COURAGE, CONFIDENCE, INDEPENDENCE,
SOCIALITE, DETERMINATION***

The Queen of Wands tarot card presents a striking image of a resolute and regal dwarven woman. Sitting serenely on a throne crafted from the finest black marble, she exudes an aura of undeniable power and dignity. Above each of her open palms float two explosive balls of fire, a testament to her control and mastery. The juxtaposition of her calm demeanor with the fierce energy of the fire symbolizes her courage and confidence, her ability to harness and control even the most volatile forces.

Her composed expression and the effortless control she exhibits over the fiery elements speak volumes about her self-confidence and independence. She is a woman who does not shy away from her power but embraces it, using it to forge her own path. Her throne, carved from the purest black marble, signifies her robust determination and unyielding resilience. It serves as a reminder of her steady and unflappable character, her readiness to face any challenge with unwavering determination.

Her stature and the manner in which she commands the fiery elements also suggest her role as a socialite. The Queen of Wands is someone who can navigate any social situation with grace and aplomb, her fiery charisma drawing others towards her. She's the life of any gathering, her warmth and vibrancy lighting up any room she enters. Yet, she remains fiercely independent, a testament to her strong will and unwavering determination. Her dominion over the fiery elements serves as a symbol of her ability to command attention and respect, a natural-born leader who inspires and motivates those around her.

King of Wands



**NATURAL-BORN LEADER, VISION,
ENTREPRENEUR, HONOR, PASSION**

The King of Wands tarot card is a commanding sight, featuring a wise old dwarf perched on a magnificent black marble throne. The throne is resplendently emblazoned with a golden hammer, a powerful symbol of his reign and industrious spirit. Behind him, two flaming torches float in mid-air, casting a warm, radiant light that illuminates his figure. This potent imagery is a testament to his status as a natural-born leader, his steadfast gaze indicative of his vision and his untamed passion.

His seasoned features, carved by years of experience, speak volumes about his wisdom and authority. He is an entrepreneur at heart, his rule characterized by innovative strategies and a forward-thinking mindset. The glowing torches behind him symbolize not only his passion but also his ability to ignite passion in others. Their flickering light serves as a beacon guiding his people, its warm glow a symbol of his unwavering dedication and honor.

His hands rest on the golden hammer, a potent symbol of his industrious nature and his willingness to work hard for his vision. It is an emblem of his honor, a testament to his belief in fair play and justice. His demeanor suggests that he is not merely a figurehead but an active participant in his kingdom's prosperity. He embodies passion, not just in his work, but in all aspects of life, inspiring those around him with his unwavering energy and zest. The King of Wands is truly a charismatic leader, his fiery spirit and visionary leadership lighting the path for others to follow.



BODY POSITIVE TAROT



THE UNCONDITIONAL TAROT



A TAROT JOURNEY THROUGH UNCONDITIONAL LOVE GUIDED JOURNAL



SELF LOVE ORACLE

All of these are available at
GoUnconditional.com



(ONE OF A KIND)
THE UNCONDITIONAL
VIBE DECK