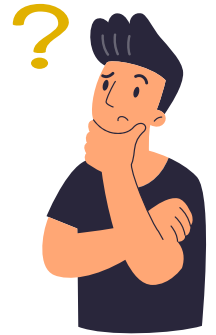


Welcome to another edition of 'Astute Safety Thinking' In this month's edition:

- Summer Health and Safety.
- Why Astute Safety Consulting?
- Online learning
- Regulator Safety Notice - Pop-up toilets: Risk of Crushing.
- Company fined after broken arm forces dad out of work.
- Runcorn business park operator fined £13,000 after worker injured in fall.
- Regulator News: Work -related fatality figures published.
- 9 Trees certification



Summer Health and Safety

It may not be the most exciting thing when you are enjoying the Summer, however a few safety precautions will go a long way to make sure everything runs smoothly so you can enjoy it as much as possible.

Wherever you are going outdoors, the seaside, the garden, on holiday abroad. Please follow the following tip to avoid sunburn and the long-term damage caused by excessive sun exposure.

- Stay out of the Sun between 11am and 3pm
- Use Sunscreen
- Wear a hat.
- Wear Sunglasses
- Cover yourself with appropriate clothing such as a long-sleeved top.
- Stay Hydrated

Here is some basic advice if you are having a barbeque .

- Never leave a barbeque unattended
- Make sure the barbeque is on a flat surface, well away from trees or sheds
- Keep safety equipment nearby for emergencies.
- Ensure the barbeque is cool before attempting to move it.
- Make sure disposable barbeques are cooled full before putting them in the bin.
- Keep children away from barbeque whilst it is hot.
- Never use burning equipment inside a tent.



Why Astute Safety Consulting?

Imagine the cost of non-compliance.

Thriving businesses manage health and safety because it is one of the key elements that makes them successful.

Managing safety is the law. Quite simply, keeping on the right side of the law and out of court leaves you free to focus on running your business and reduces the risk of increasingly heavy fines as well as protecting your reputation.

Managing safety improves your business' overall and reduces workplace accidents and injuries. There will be fewer accidents, employee engagement improves and productivity increases. We should all expect to be able to go home without being injured or our health made worse just because of our work. It is immoral to put people at unnecessary risk. Your policy shows employees that you definitely care about their wellbeing.

Online learning

We've teamed up with Video Tile Learning to offer you the latest online learning resources, designed to improve you and your team's safety awareness and knowledge. You choose the subjects and learn at your own pace.



Working Safely

Working safely is in the interest and concern of all staff, both employers and employees.

Health and safety is one of the few areas where the law places specific duties specifically on employees so a knowledge of where this applies and how to ensure that it is adhered to is vital to protect individuals and businesses.

The course covers a wide range of topics including fire safety, asbestos awareness, working at height, COSHH, PPE and electricity. It also covers schemes for improving safety performance and methods of protecting the environment.

Approved by IIRSM & CPD
CPD Units: 4
150 mins



Level 1 Food Safety Catering

Food safety combines a number of practices to reduce health hazards. These include premises hygiene, personal hygiene, risk control, pest control and waste management. This level 1 course is about minimising the level of potential hazards in a food catering setting.

**Approved by CPD, Gatehouse Awards,
Institute of Hospitality & IIRSM**
CPD Units: 2
50 mins

**BROWSE OUR TRAINING
MODULES**

Pop-Up toilets: Risk of Crushing

Issue

HSE has issued a safety alert after an incident where a worker was killed when working underneath a raised telescopic pop-up toilet.

Outline of the problem

There is a risk of people being crushed when they are underneath a raised, unpropped pop-up toilet. There's potential danger from:

- The lowering of a raised pop-up toilet during cleaning, maintenance, or inspection activity
- Intentional or unintentional access to the chamber underneath a raised, unpropped pop-up toilet

Action required

Designers, manufacturers, suppliers, owners, and anyone providing information for, or carrying out, cleaning, maintenance or inspection of pop-up toilets must manage risk during work.

Manage risk

Duty holders should assess each pop-up toilet to identify risks associated with pop-up toilet chamber access, cleaning, and maintenance activities.

You must reduce risk to the lowest reasonably practicable level by taking preventative measures. Using your risk assessment for work on a pop-up toilet you should think about the following in order of priority:

- Elimination, can you avoid or remove the hazard?
- Substitution, can you change a tool or process to remove the hazard or make it safer?
- Engineering controls, can you use something to physically isolate the hazard from workers?
- Administrative controls – can you change the way people work through policy, procedure, or warnings?
- PPE, what personal protective equipment could help keep people safer?

Prevent the mechanism lowering

Using suitably rated engineering controls should prevent a raised pop-up toilet from lowering when someone is accessing the chamber below.

Controls could include mechanical safeguarding devices or measures such as a pit prop, moveable stop or stand which can be fitted and effectively locked in position before anyone accesses the chamber under a raised toilet.



When choosing engineering controls, you should think about chamber access and the associated clearances available to an operative. You should limit the need for the operative to reach or place themselves under the raised toilet.

Make sure that the controls safeguard against the unintentional lowering of a raised pop-up toilet during toilet chamber access, cleaning, and maintenance activities.

Ensure that any engineering control measures you put in place are maintained in good working order. Provide information.

Duty holders should make sure that anyone cleaning, maintaining, or inspecting pop-up toilets, or anyone fitting or maintaining engineering control measures have adequate health and safety information and, where appropriate, written instructions on fitting and using control measures.

For more information, please visit <https://hse.gov.uk>



Company fined after broken arm forces dad out of work

A manufacturing company has been fined after a man was drawn into a machine and broke his arm in two places.

The father-of-two was unable to work for over a year following the incident on 12 March 2021.

While working he noticed a build-up of butyl on the conveyor belt of the firm’s hot feed extruder machine. He reached into the conveyor to find out how much of the material was blocking the machine. While doing so his left arm became trapped and entangled between the machine’s conveyor belt and pulley. his led to the ulna and radius bones in his left arm breaking with the man later requiring surgery to fit metal plates in the arm.

(HSE) investigation found that HS Butyl Limited had failed to provide guarding to stop its workers from being exposed to dangerous areas on moving machinery.

HSE inspector Lucy Hacker said: “This incident was wholly avoidable, caused by the failure of the company to provide guarding. Employees should be physically prevented from getting into a position where they can come into contact with dangerous parts of machinery, and experience and procedures alone should not be relied upon to control risk.

Full article [here](#)



Runcorn business Park operator fined £13,000 after worker injured in fall

A Runcorn business park operator has been fined £13,000 after a worker fell more than 13 feet through a fragile roof.

The man sustained life-threatening injuries, including a fractured skull, and collapsed lung as a result of the fall, which happened while he was carrying out repairs at a premises on The Heath Business and Technology Park on 17 June 2021. were crushed by a metal rolling machine.

An investigation by HSE found that SOG Limited had failed to take appropriate precautions to ensure the safety of workers on the roof.

Full article [here](#).

Regulator News- Work related fatality figures published.

- 135 workers died in work-related incidents in 2022/23
- 2,268 mesothelioma deaths in 2021 through past exposure to asbestos

The industries with the highest deaths were construction (45), agriculture, forestry, and fishing (21), manufacturing (15), and transportation and storage (15). Agriculture, forestry, and fishing has the highest rate of fatal injury per 100,000 workers of all the main industrial sectors followed by waste and recycling.

Read the full article [here](#).

Astute News

We are pleased to announce that we have joined 9Trees and received bronze certification. We joined this organisation as it fits with our ethos of having a positive impact on climate change.

9Trees focus on creating nature-rich biodiverse woodlands throughout the UK. Every tree that we plant through this organisation helps bring back biodiversity, tackle climate change, create meaningful jobs in the countryside sector and promotes wellness through nature.

The 9 Tonnes equates to 9Trees planted by them.



Make the astute choice and let Astute Safety Consulting help your business today.

www.astutesafetyconsulting.com