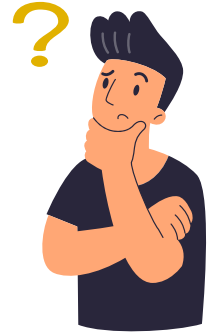


Welcome to another edition of 'Astute Safety Thinking' In this month's edition:

- Control of Substances Hazardous to health COSHH
- Why Astute Safety Consulting?
- Online learning
- Agricultural Safety: Urgent Call for Change
- £400,000 Fine Imposed After Violent Attacks on Hospital Staff
- Company fined for failing to protect workers
- Blackpool clothing company fined after worker hit by forklift truck.
- Zero Waste week



Control of Substances Hazardous to health (COSHH)

What COSHH is

The law requires you to adequately control exposure to materials in the workplace that cause ill health. This is the Control of Substances Hazardous to Health Regulations (COSHH).

Harmful substances

Many materials or substances used or created at work could harm your health. These substances could be dusts, gases, fumes that you breathe in, or liquids, gels or powders that come into contact with your eyes or skin. There could also be harmful micro-organisms present that can cause infection, an allergic reaction or are toxic.

Harmful substances can be present in anything from paints and cleaning solution to flour, dust, solder fumes, blood, or waste. Ill health caused by these substances used at work is preventable. Many substances can harm health but used properly, they almost never do.

Substances not covered by COSHH.

COSHH does not cover the following substances as they have their own specific regulations:

- Lead
- Asbestos
- Radioactive substances

The hazards

Some substances can cause asthma or other diseases, including cancer. Many can damage the skin, and some can cause serious long-term damage to the lungs. The effect can be immediate, such as dizziness or stinging eyes, or can take many years to develop, such as lung disease.

Many of the long-term or chronic effects cannot be cured once they develop.

What you have to do

You can prevent or reduce workers exposure to hazardous substances by:

- Finding out what the health hazards are
- Deciding how to prevent harm to health (risk assessment)
- Providing control measures to reduce harm to health.
- Making sure control measures are used.
- Keeping all control measures in good working order
- Providing information, instruction and training for workers and others
- Providing monitoring and health surveillance in appropriate cases
- Planning for emergencies

What is a 'substance hazardous to health'?

COSHH covers substances that are hazardous to health. Substances can take many forms and include:

- Chemicals
- Products containing chemicals.
- Fumes
- Dusts
- Vapours
- Mists
- Nanotechnology
- Gases and asphyxiating gases
- Biological agents (germs). If the packaging has any of the hazard symbols, then it is classed as a hazardous substance.
- Germs that cause diseases such as leptospirosis or legionnaires disease and germs used in laboratories.

I am self-employed. Does COSHH apply to me?

Yes.

If you have employees (you control their work), every part of COSHH applies.

If you have no employees (but you take hazardous substances to other people's premises), all parts of COSHH regulations apply except those about monitoring and health surveillance.

Why Astute Safety Consulting?

Risk Assessments

Understanding your risks and managing them are the most effective things you can do to improve safety. Risk assessments are fundamental in understanding what might go wrong and outline preventative measures. It is so important to take on board the opinions of people carrying out the work and that an experienced health and safety professional helps guide the process.

Able to fit your needs.

Every business is different and faces its risks and challenges. That is why we treat our customers as individuals, one size does not fit all. Our experienced team prides itself on giving our customers sound and sensible health and safety advice.

Our range of services and plans can give small and medium sized businesses peace of mind by looking after all your safety requirements.

We can also work alongside existing teams in larger companies with one-off projects or give short term specialist assistance.

Practical safety Advice

Good safety management can save you money by reducing absence following accidents as well as ensuring that you are complying with Health and Safety legislation in the UK. Managing safety in your workplace can also reduce the likelihood of an injured person taking legal action after an accident.

Instead of being worried about the impact of an accident and legal action, you will have peace of mind and your business will be better protected.

Why Astute Safety Consulting?

Online learning

We've teamed up with Video Tile Learning to offer you the latest online learning resources, designed to improve you and your team's safety awareness and knowledge. You choose the subjects and learn at your own pace.



Control of Substances Hazardous to Health (COSHH)

This course covers what you need to know about the Control of Substances Hazardous to Health. It is aimed at anyone who is exposed to Substances Hazardous to Health at work, as well as line managers with responsibility for such people.

Approved by IIRSM & Institute of Hospitality
125 mins

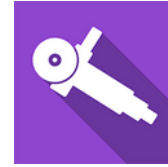


Working at Height

This course is aimed at anyone who undertakes work at height, or who employs people who regularly work at height. It covers what constitutes work at height, the safety issues, and how to assess and reduce some of the risks

Important note: Please note that this is an awareness course only, if your duties include working at height you will also need further practical training, you can get in touch with us to arrange this..

Approved by CPD, Gatehouse Awards & IIRSM
CPD Units: 3
105 mins



Abrasive Wheels

This course is aimed at anyone who uses abrasive wheels or employs people who use abrasive wheels as part of their work.

It covers different types of abrasive wheel, safety in their use and how to identify the type of wheel.

Approved by IIRSM & CPD
CPD Units: 3
100 mins



Abrasive Wheels

This course explains the difference between mental health and mental illness.

It covers the symptoms of a number of the most common mental illnesses so you will know what to look out for or what to expect if you are working with someone with one of these conditions. As well as providing some practical advice on how you can work effectively with those affected by these conditions.

Approved by CPD
CPD Units: 2
25 mins

BROWSE OUR TRAINING MODULES



Agricultural Safety: Urgent Call for Change as Child Among 27 Fatalities

In the last year, 27 people, including a three-year-old child, has lost their lives in farming-related incidents.

This alarming data comes from the UK's workplace regulator, urging the agricultural community to transform its approach to safety. This sector's fatal injury rate remains distressingly high, with it being 21 times more than the average across other industries.

While fatal injuries in farming have decreased by half since the 1980s, the rate has barely shifted. The most frequent causes of these tragic deaths remain consistent:

- Injuries by animals, especially cattle
- Falls from heights
- Collisions with moving vehicles
- Mishaps with operating or maintaining machinery
- Being hit by objects, like bales or trees

It's alarming to note that a third of these fatalities involve workers aged 65 and above.



Sue Thompson, the Head of Agriculture at the Health & Safety Executive, expresses deep concern, particularly about children's involvement. "It's time to think differently and not tolerate this any longer. Children must not be in farm workplaces," she emphasized. She also noted that while awareness of risks and regulations is at an all-time high, the desired shift in safety attitudes is lagging.

In a move towards enhancing safety, HSE has introduced a new website, 'Your Farm – Your Future', dedicated to promoting safe vehicle use in farming. Thompson appeals to every individual in the farming community: "It is only with the support and commitment of each and every farmer that we will see improvement. Together, we can make farming healthier and safer."

For comprehensive guidance and resources on farm safety, visit the HSE website at <https://hse.gov.uk>.



£400,000 Fine Imposed for Companies After Violent Attacks on Hospital Staff

Two companies have been fined a combined total of more than £400,000 after staff working at a South Wales mental health hospital were subjected to violent attacks by patients over a three-year period.

Parkcare Homes (No.2) Limited and Priory Central Services Limited, both part of The Priory Group, pleaded guilty after failing to manage risks to care staff and patients from violence and aggression.

A Health and Safety Executive (HSE) investigation revealed:

- Insufficient risk assessments were conducted.
- The environment and equipment were ill-suited to manage violent situations.
- Staff lacked appropriate training to handle aggressive patients.
- Necessary protective gear, such as bite-resistant clothing and personal alarms, were not provided.
- No follow-up discussions with staff post-incidents were conducted.

HSE Principal Inspector Anne Marie Orrells commented on the significance of the case, noting that despite repeated alerts, the healthcare provider, Priory, failed to protect its staff adequately.

Read the full article [here](#).



Company fined for failing to protect workers

Ross & Catherall Limited, a metal bar manufacturer for the aerospace and automotive sectors, faced a fine due to its failure to shield two employees from vibration risks at its Forge Lane site in Killamarsh, Sheffield.

A Health and Safety Executive (HSE) probe discovered the company's lack of a risk assessment concerning hand-arm vibration, meaning there was no insight into the vibration levels the operators encountered. The company also did not have measures to lessen these exposure levels. Adequate measures were only introduced after the HSE stepped in. Furthermore, health monitoring was found to be insufficient, with no annual health check-ups or initial assessments for new workers. Read the full article [here](#)

Blackpool clothing company fined after worker hit by forklift truck.

A clothing company based in Blackpool, has been given a £40,000 fine following an incident in which a man was severely hurt by a forklift truck.

Commenting on the case, HSE inspector Matthew Shepherd emphasised the firm's failure to instate a secure working procedure, exposing delivery drivers to potential accidents with forklift trucks. He added that businesses utilising forklifts must discern the associated risks and establish adequate safety measures.

For further details, visit the HSE website [here](#)

Zero Waste week



4 September to 8 September 2023

The aim of this international social campaign is to help businesses, householders, Universities, schools, and community groups increase recycling, reduce landfill waste, save money, preserve resources, and protect the environment.

For more information, please visit <https://www.zerowasteweek.co.uk>.

Make the astute choice and let Astute Safety Consulting help your business today.

www.astutesafetyconsulting.com