

# Abd Almouz Al-Hashimi

## MAMLUK STYLE

Inspired by the rich heritage of Mamluk art, this mural design is a contemporary interpretation that harmoniously blends traditional Islamic aesthetics with modern sensibilities.

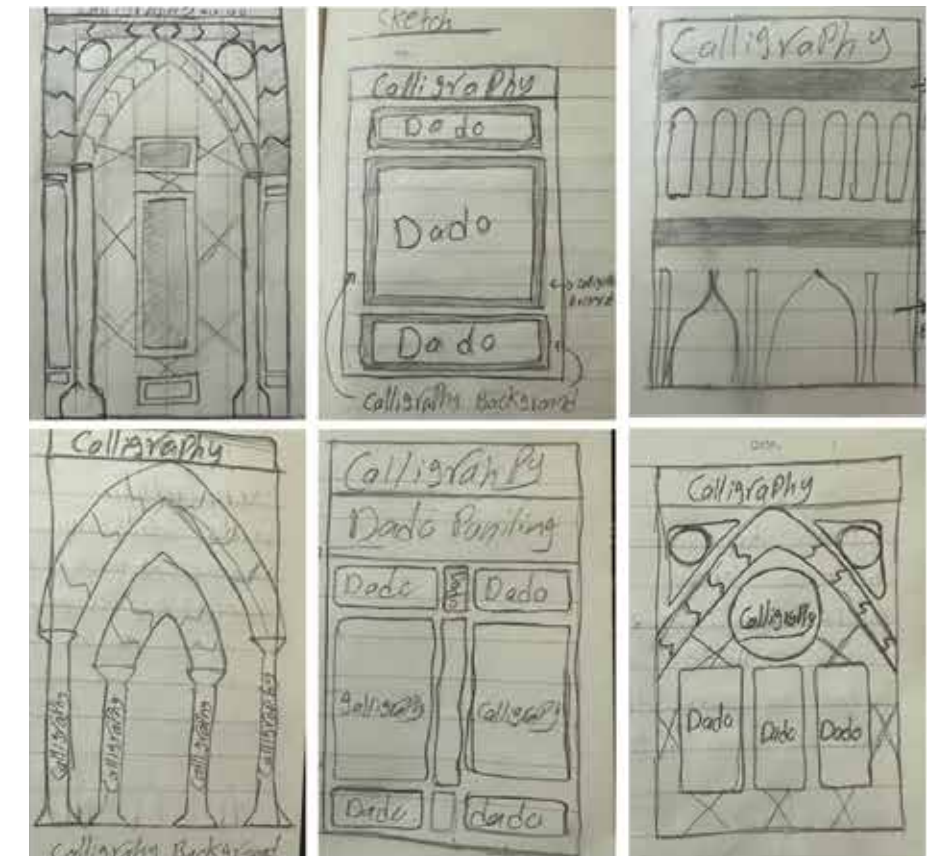
Central to the design is a dado panel featuring Islamic stars crafted from marble mosaics, symbolizing the unification of heaven and earth. This element pays homage to the intricate geometric patterns prevalent in Islamic art and reflects the Mamluk style's emphasis on detailed craftsmanship and luxurious materials.

While rooted in historical context, the mural is designed to resonate with the identity of modern spaces, creating a bridge between the past and the present. It embodies a balance of spiritual symbolism and artistic expression, capturing the essence of Islamic art's enduring legacy in interior design.

### Inspiration



### Sketch





Colored Mural



AI Proposal



Key word for AI

Artwork, Islamic Pattern, Mural, Yellow, Mohagany, Spread



## Abeer Aljoudy

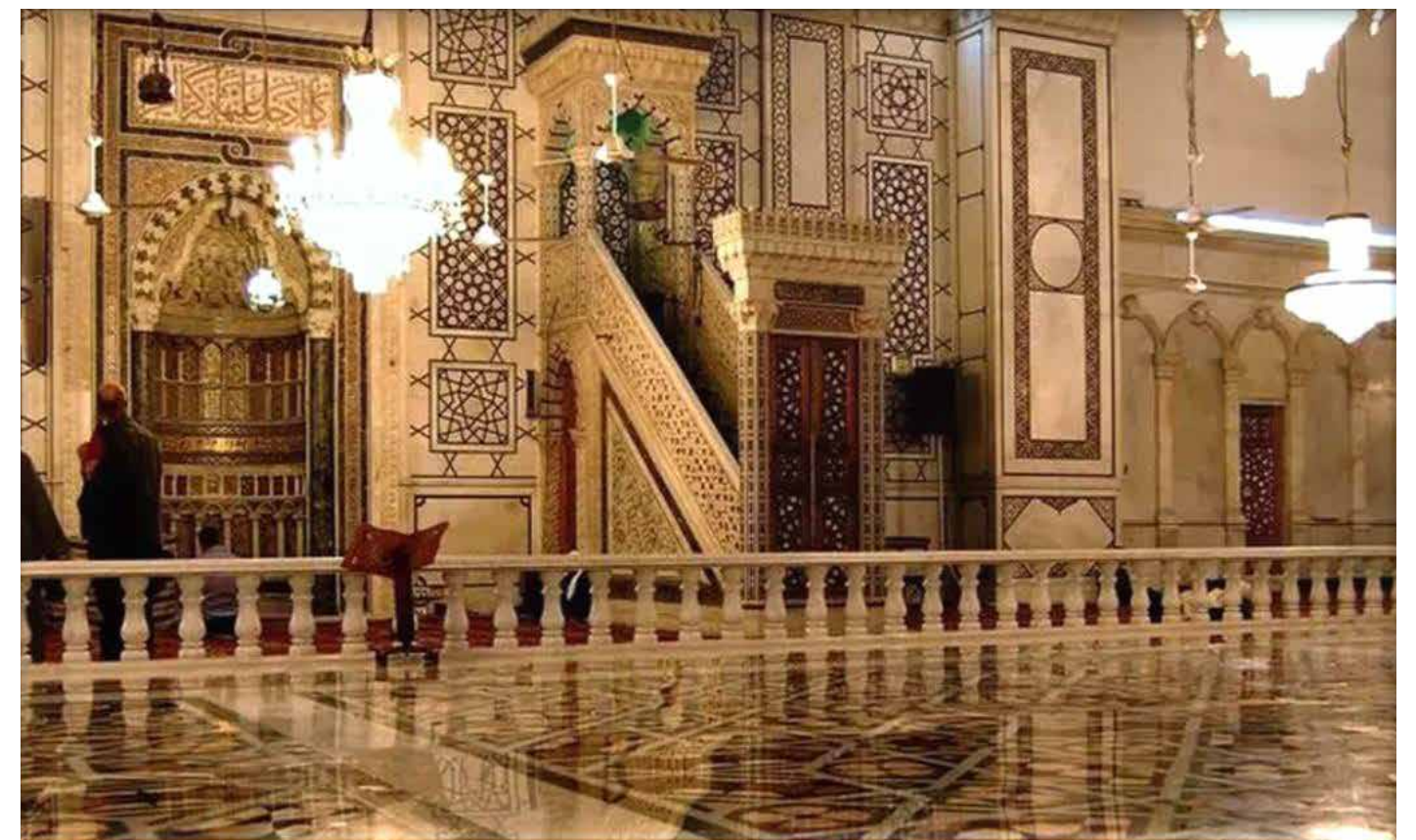
### UMAYYAD STYLE

The Umayyad Masjid architecture and the intricate star patterns inspire the mural. The main focus is on integrating geometric designs, a central aspect of Islamic artwork. These patterns, known for their repetitive forms, symbolize the belief in continuity and the limitless nature of the universe.

A color palette that mirrors the hues commonly seen in art was used to reflect the traditions of the Umayyad era, especially in Syria. The goal is to create a serene and contemplative atmosphere by incorporating colors traditionally associated with interior design. Additionally, materials such as marble and wood add authenticity and depth to the composition, as they are frequently used in construction.

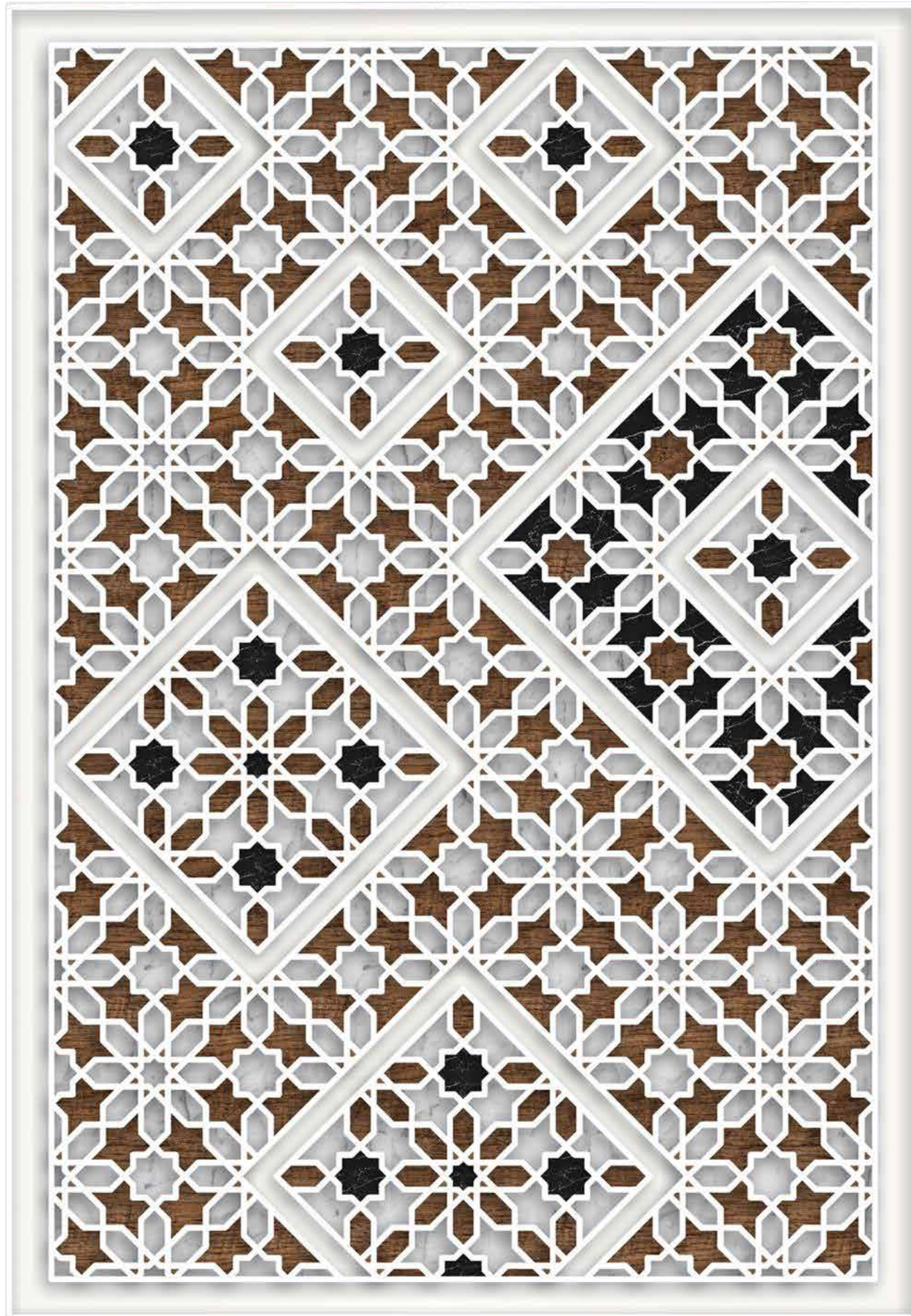
A key principle to consider when designing this mural is symmetry and balance, as they echo the belief in order and harmony. This design philosophy captures the essence of art while paying tribute to its rich historical and cultural significance.

### Inspiration





Colored Mural



AI Proposal



Key word for AI

Mural Design Wall, Umayyad Style, Pattern, Mosaic, White & Black Marble, Wood



# Hanein Elhamady

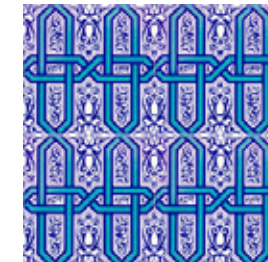
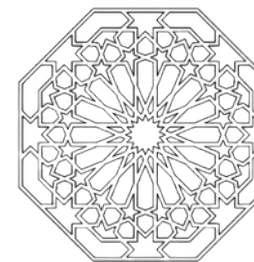
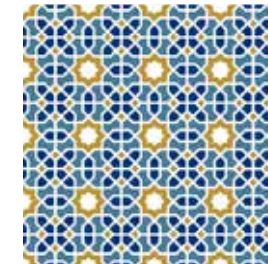
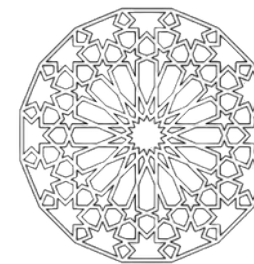
## SELJUK STYLE

The mural design, deeply rooted in the Seljuk tradition, embraces the intricate faience mosaic work of the Ilkhanids, characterized by stars, hexagons, and cross shapes. This design is predominantly executed in shades of blue and turquoise, resonating with the historical color palette of the Seljuk era.

Including vegetal, geometrical, and new Kufi calligraphy patterns within these geometric forms reflects Seljuk's appreciation of nature and their skill in integrating naturalistic elements with abstract designs.

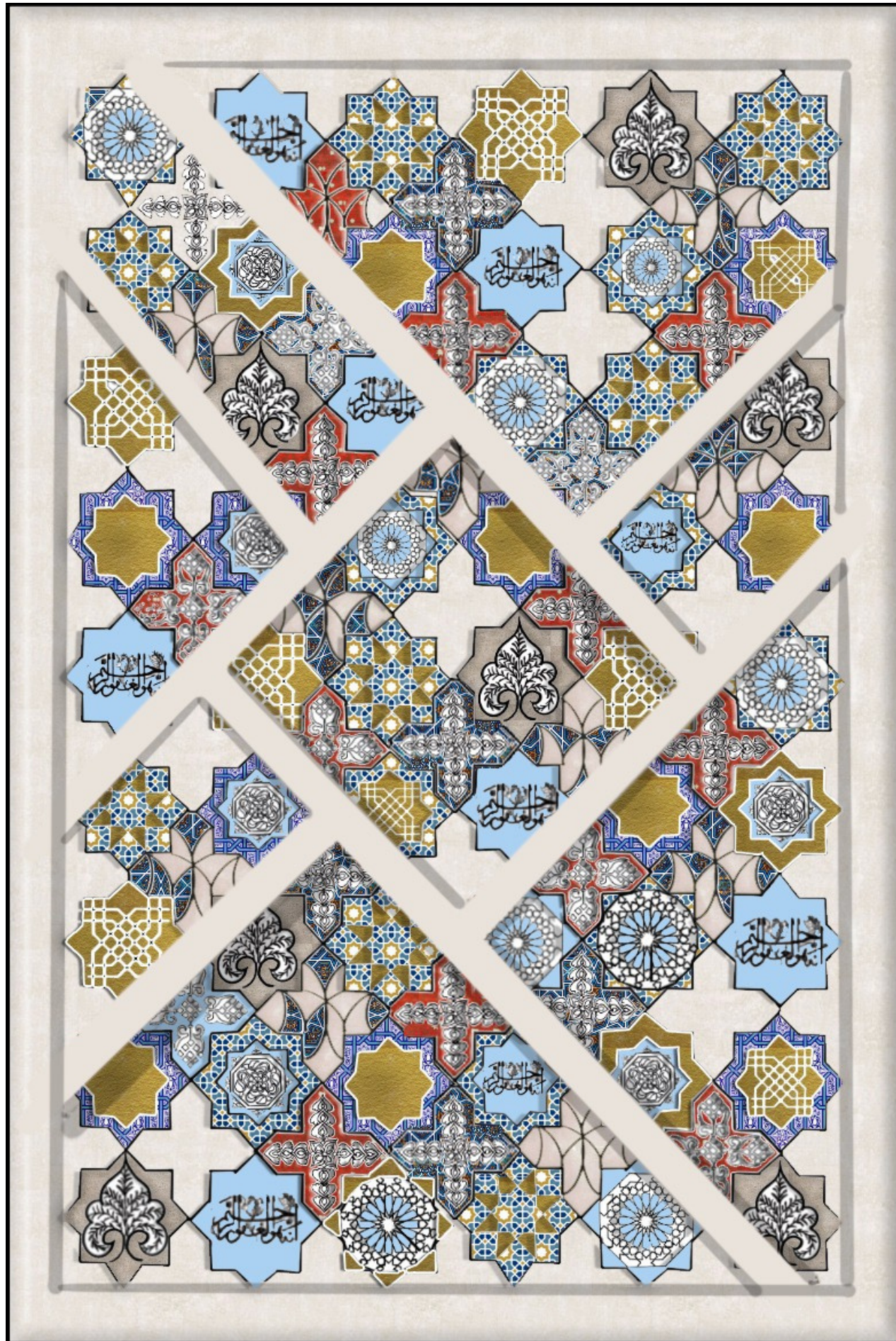
Therefore, the mural's overall composition represents a harmonious blend of the abstract and the organic, showcasing the Seljuk's unique contribution to Islamic art and their interpretation of the Islamic philosophy that emphasizes unity and continuity to infinity. This design approach not only celebrates the historical artistry of the Seljuks but also embodies the spiritual and aesthetic principles of Islamic art.

## Inspiration

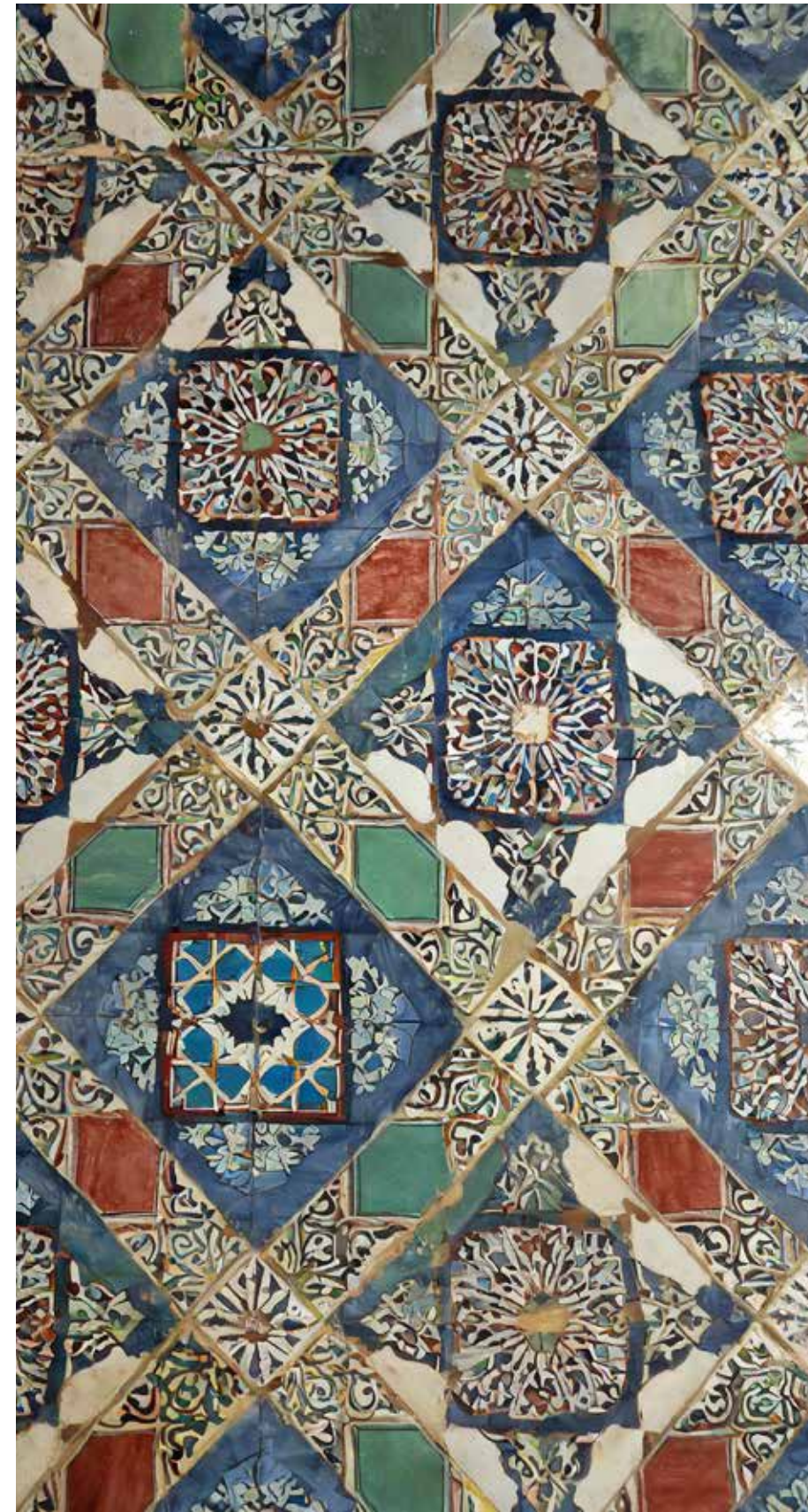




Colored Mural



AI Proposal



Key word for AI

Octagonal Shape, Geometric Shapes, Seljuk Kufi Calligraphy, Monocromic Pattern, Un Plastered Brick



# Hebah Ibrahim

## FATIMID STYLE

The mural's design embraces the style of the Fatimid Islamic era by incorporating elements like al muqarnas. These elements are beautifully combined with Fatimid medallions and motifs, resulting in a captivating representation with great historical and cultural significance.

Using meticulously inlaid gold and stone materials adds depth and texture to the mural, reflecting the luxurious artistry of the Fatimid dynasty. The design is arranged in strips, creating a structured aesthetic that enhances the composition.

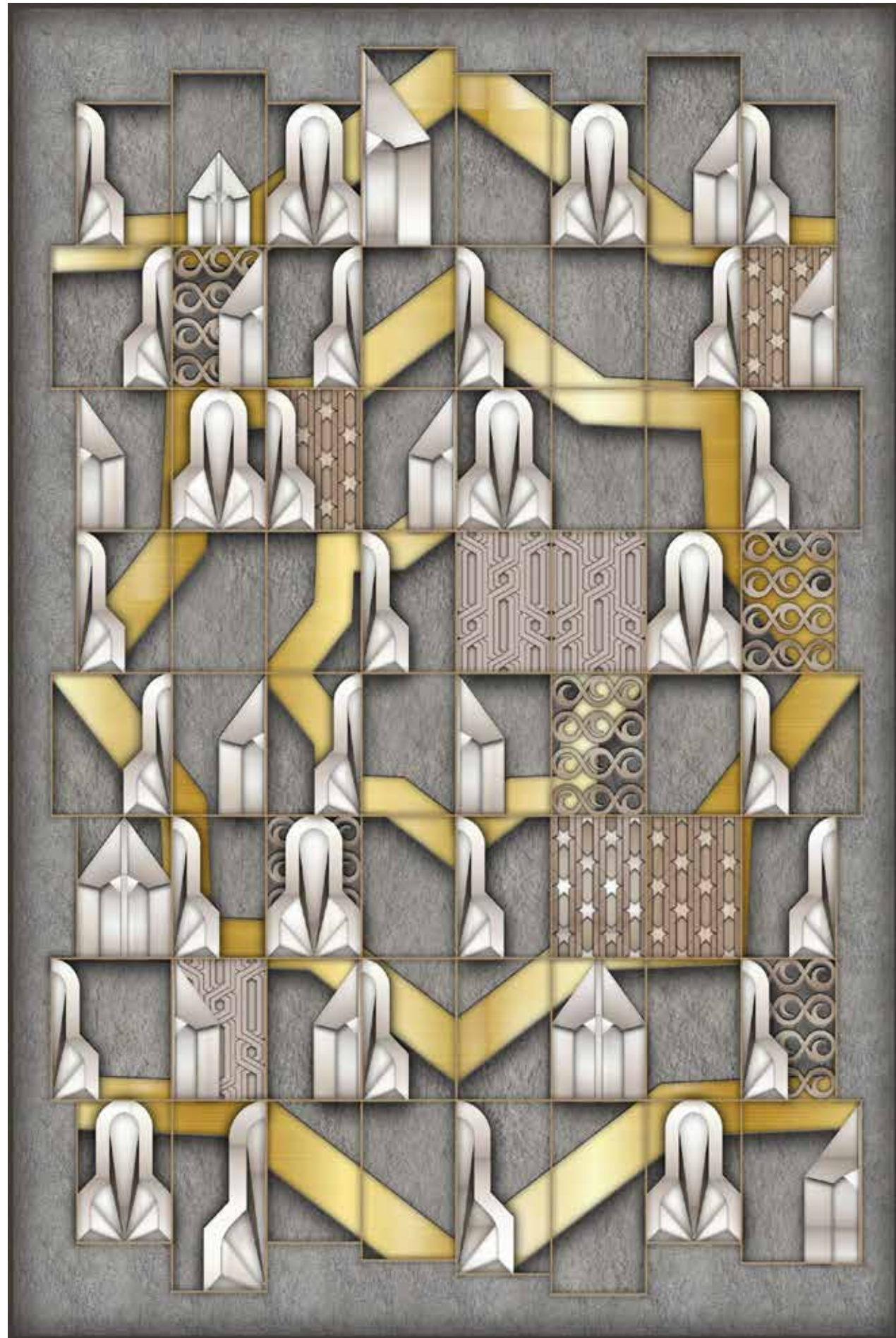
This approach truly captures the essence of the Fatimid style, showcasing its contribution to art through a harmonious blend of geometric patterns, opulent materials, and historical motifs.

## Inspiration

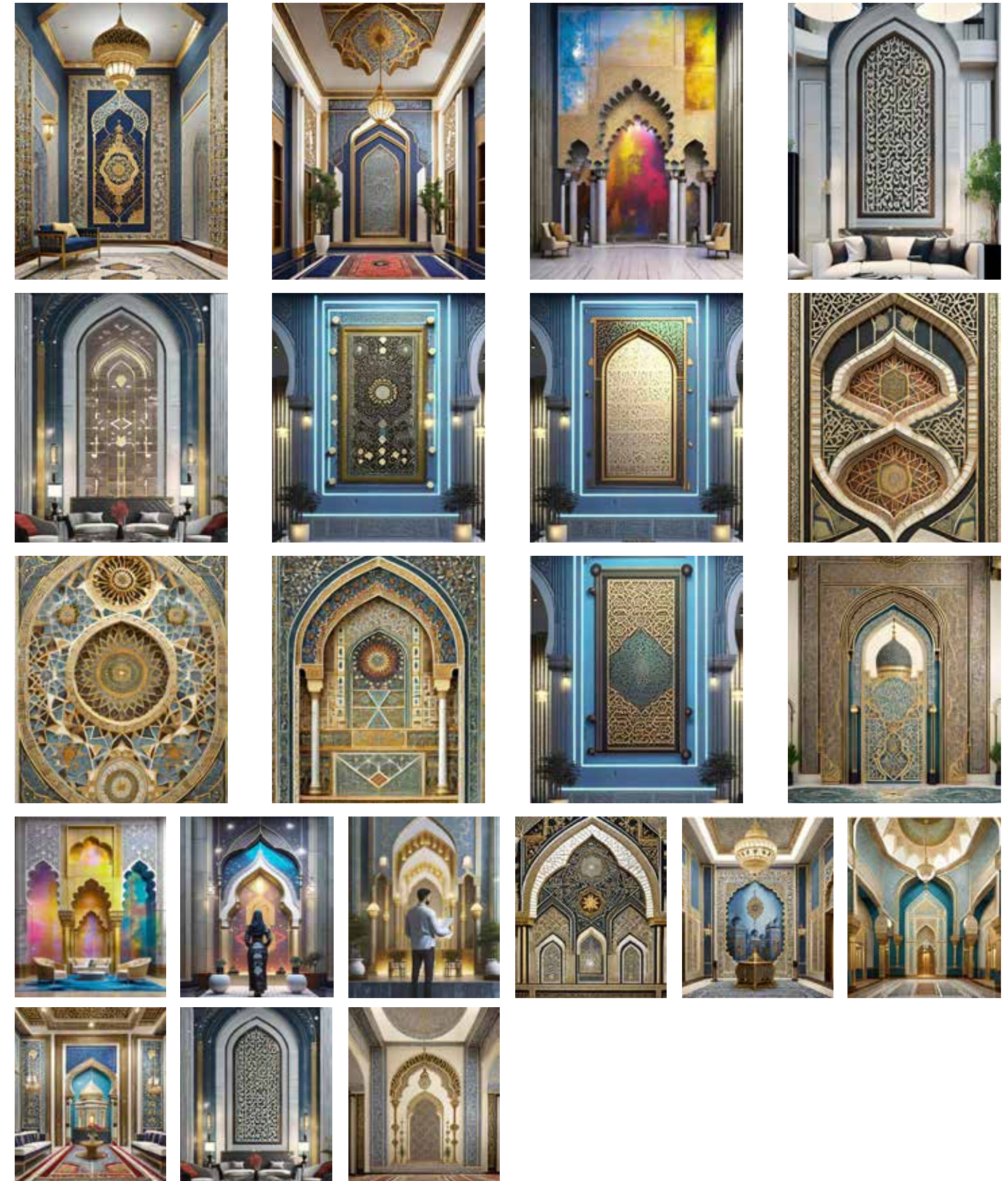




Colored Mural



AI Proposal



Key word for AI

Fatimid Islamic Style, Al-Muqarnas, Interlace Ablaq, Medallion, Fatimid Style Dynasty, Fatimid Dynasty Motifs, Patterns, Inlaying Gold, Stone Material, Gold, Add Texture To It, Add Depth.



# Khaled Bayoumy

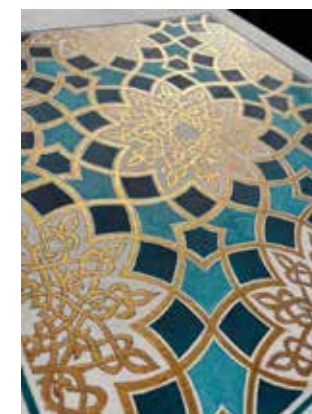
## MAMLUK STYLE

Inspired by the Mamluk era, the mural showcases this period's exquisite artistry and craftsmanship. It features a vivid array of polychrome marble mosaics, meticulously arranged into interlocking geometric patterns using marble and granite. These patterns reflect the Mamluk's profound understanding and appreciation of the complexity and spirituality inherent in Islamic art.

The color palette is rich with earthy tones and shades of blue, reminiscent of the natural pigments popular during the Mamluk era. Gold engraving, a symbol of luxury and elegance, is also a significant design aspect. Floral and geometric motifs are seamlessly integrated, demonstrating the Mamluk's exceptional ability to marry naturalistic designs with abstract forms.

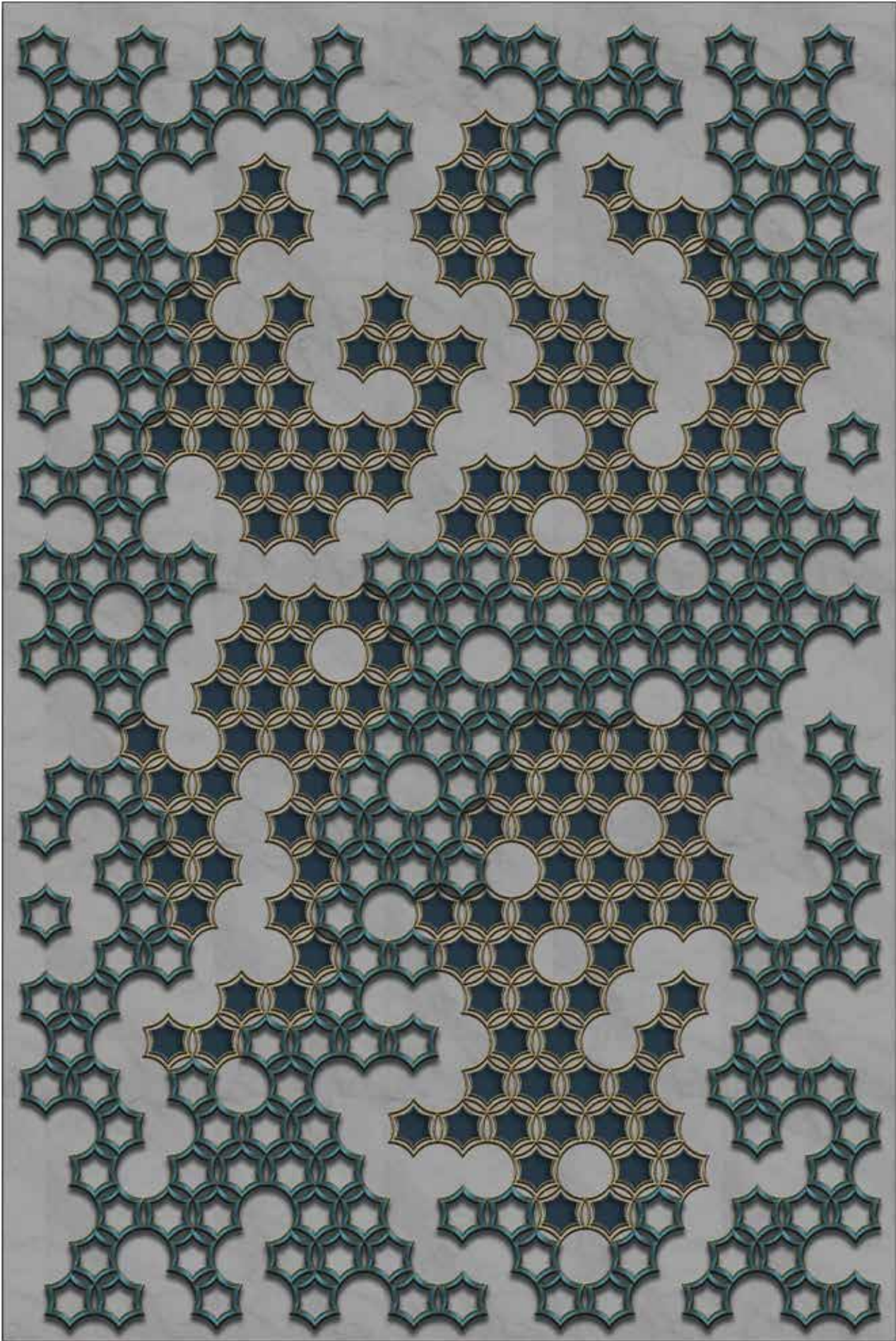
This mural pays homage to the historical and cultural significance of the Mamluk period and offers a visually stunning and spiritually meaningful representation of their legacy in Islamic art.

## Inspiration

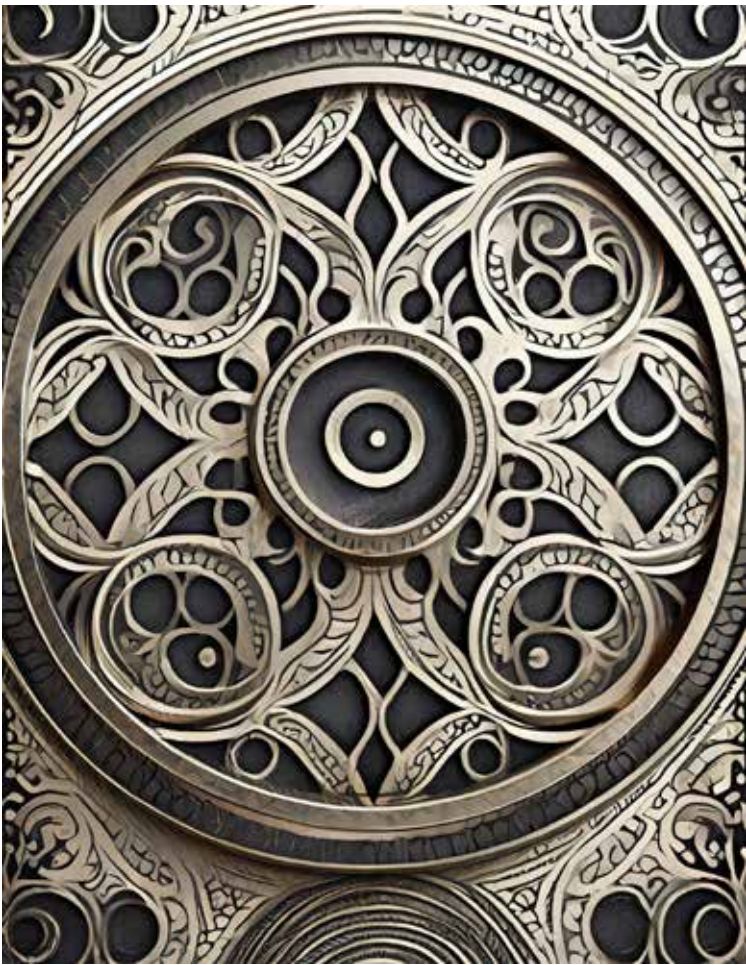




Colored Mural



AI Proposal



Key word for AI

Mamluks, Engraving Metal, Marble Background, Mural, Circles, Geometry



# Khawla Al Ali

## MAMLUK STYLE

The mural elegantly weaves together the grandeur of pointed arches, a signature of Mamluk architecture, creating a visually striking framework that draws the viewer into the depth of the design. Within this framework, the mural showcases the beautiful complexity of Sioufi calligraphy, its flowing forms and eloquent lines adding a layer of textual richness and cultural depth, reflecting the Islamic reverence for the written word.

At the heart of the design are the joggling voussoirs patterns, which bring a dynamic rhythm to the mural, their interlocking shapes symbolizing the intricate balance and interconnectedness in Islamic art and philosophy. These patterns are masterfully juxtaposed against the more structured and geometrically precise dado panels, which anchor the composition with their repetitive and grounding motifs.

Therefore, this mural is not just an artistic representation but a harmonious fusion of significant Mamluk elements, each contributing to a narrative steeped in the rich history and enduring legacy of Islamic art and culture. It is a testament to the Mamluk era's sophisticated aesthetics and lasting influence on Islamic artistic traditions.

## Inspiration

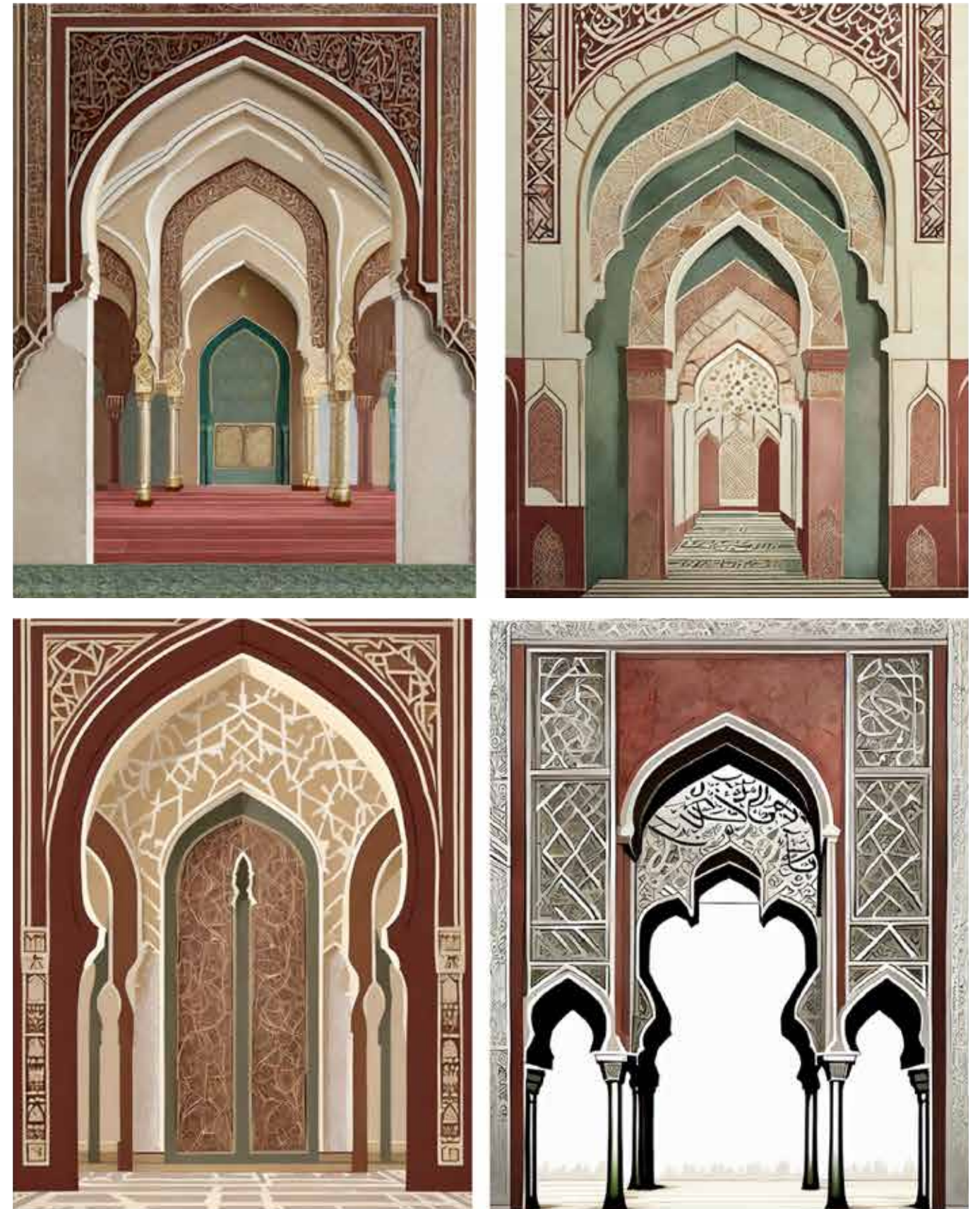




Colored Mural



AI Proposal



Key word for AI

Create a mural, inspired by Mamluk Islamic style, featuring pointed arches in a warm reddish-brown, adorned with Sioufi calligraphy, set against a backdrop of soothing beige



# Majd Albayed

## SELJUK STYLE

Drawing inspiration from the Seljuks and their use of faience mosaic, hexagons, and the vivid blues and turquoises found in Ilkhanid art, along with the arabesque and mythical creature patterns from the Sasanian era, the mural represents a rich tapestry of history and artistry.

It brings together Seljuk's mastery in creating intricate hexagonal tiles with the mesmerizing depth of blue and turquoise hues, creating a visual experience that is both calming and captivating. The arabesque patterns, flowing seamlessly through the design, add an organic, natural feel, while the mythical creatures from the Sasanian era inject a sense of mystery and storytelling into the mural.

This design philosophy celebrates the Seljuk's contribution to Islamic art, blending their geometric precision with the colorful narratives and intricate designs of earlier eras, creating a mural that is not just a piece of art but a journey through time and culture.

## Inspiration

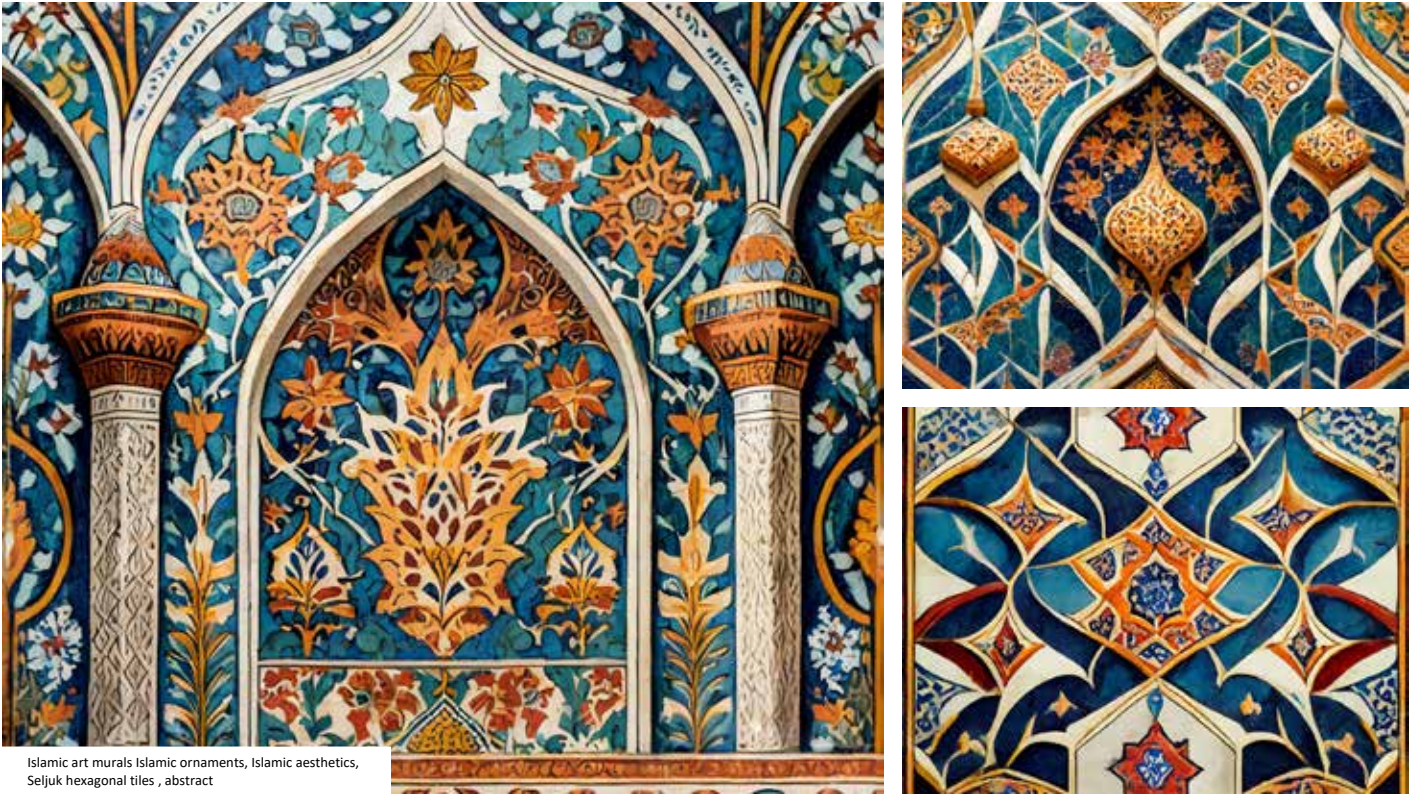




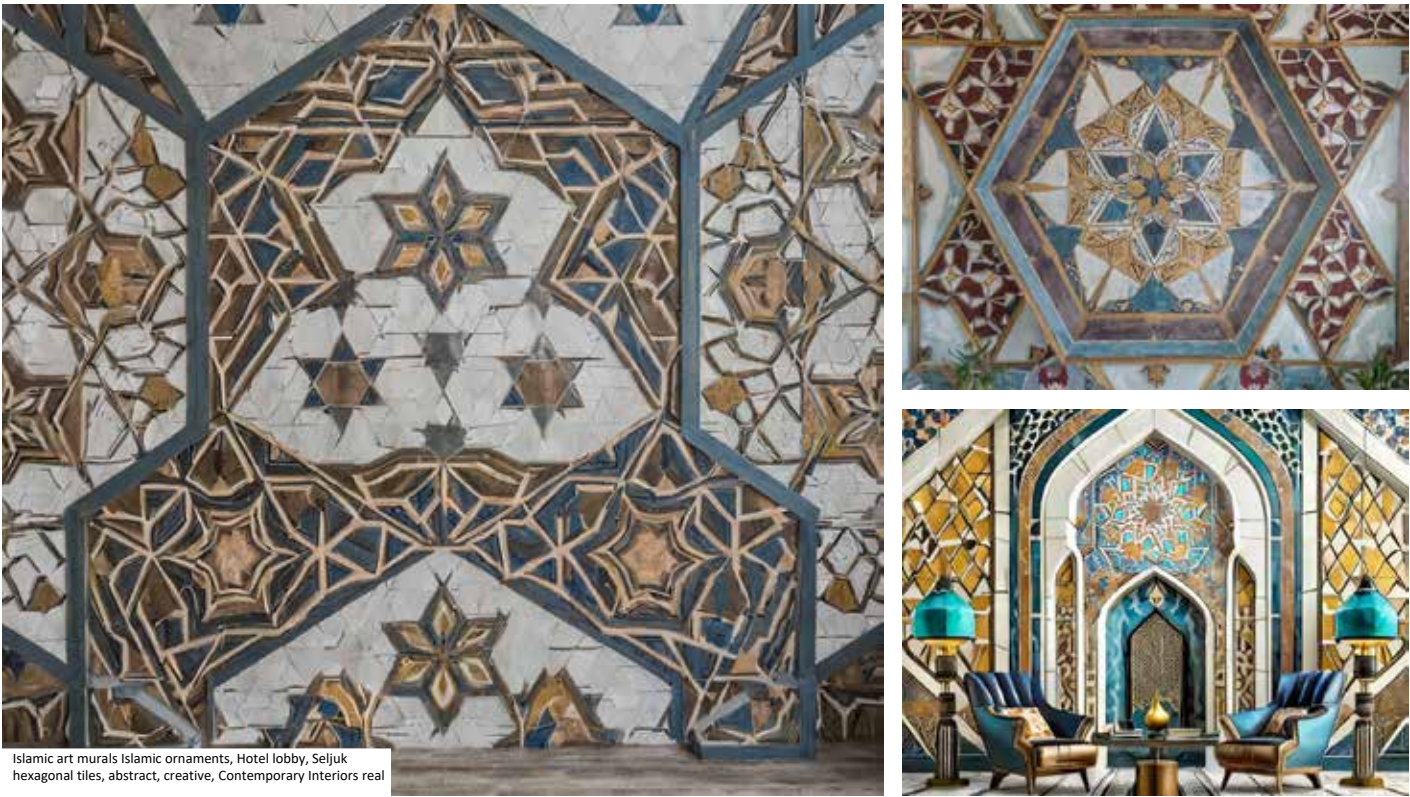
Colored Mural



AI Proposal



Islamic art murals Islamic ornaments, Islamic aesthetics, Seljuk hexagonal tiles , abstract



Islamic art murals Islamic ornaments, Hotel lobby, Seljuk hexagonal tiles, abstract, creative, Contemporary Interiors real

Key word for AI

Islamic art muralsIslamic ornaments, Islamic aesthetics, Seljuk hexagonal tiles, abstract  
Islamic art muralsIslamic ornaments, Hotel lobby, Seljuk hexagonal tiles, abstract, creative, contemporary interiors real



# Nadin Eltalhawi

## ABBASID STYLE

In this mural, the Abbasid influence is vividly present, showcasing the distinct architecture of pointed arches, which add structural elegance and guide the viewer's attention. The mural is embellished with patterns resembling vegetal stucco, infusing a sense of organic beauty into the composition. Vine leaf motifs, a signature element in Abbasid decorations, are intricately woven into the design, symbolizing the dynasty's affinity for nature-inspired themes.

The presence of Kufi calligraphy, known for its geometric simplicity and profound aesthetic, adds a textual richness, speaking to the cultural and historical depths of the Abbasid era. Additionally, the beveled technique, skillfully employed, gives the mural a tactile quality, enhancing its visual appeal with a play of light and shadow.

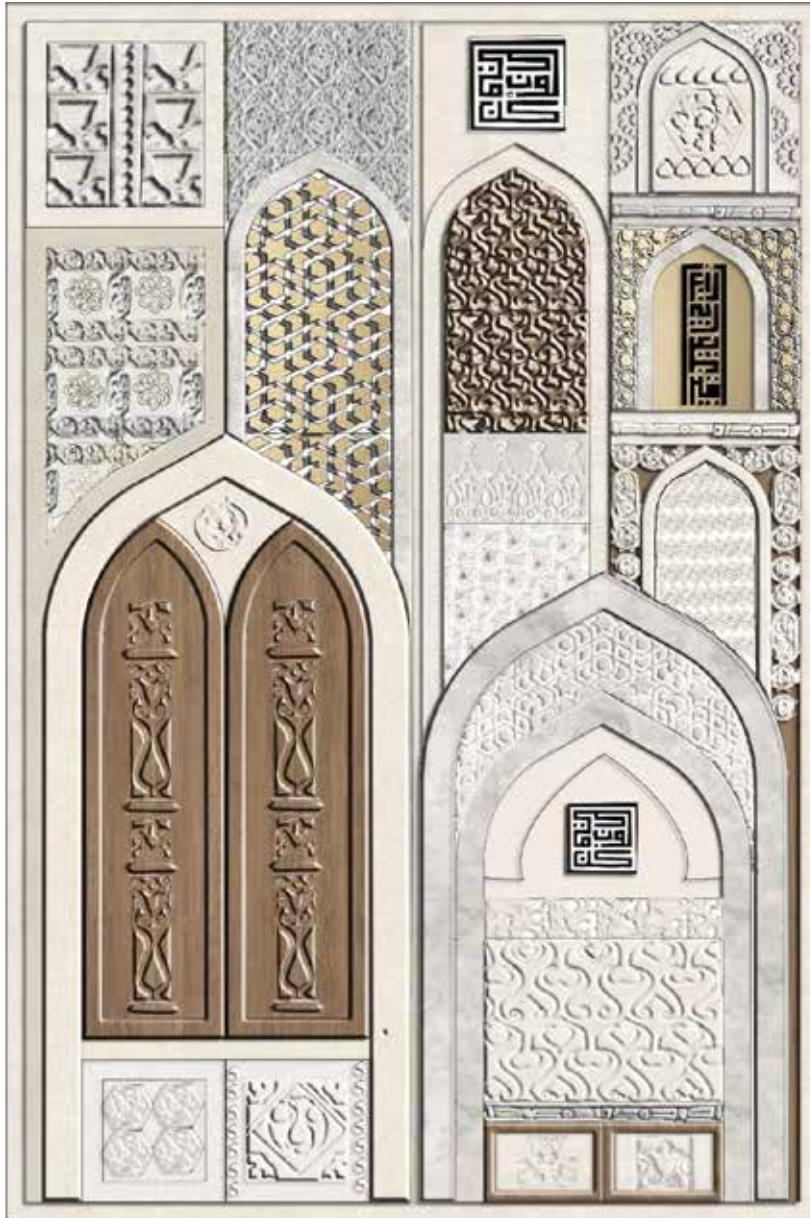
This mural is a homage to the Abbasid era, blending their architectural and decorative genius with a modern artistic interpretation.

## Inspiration

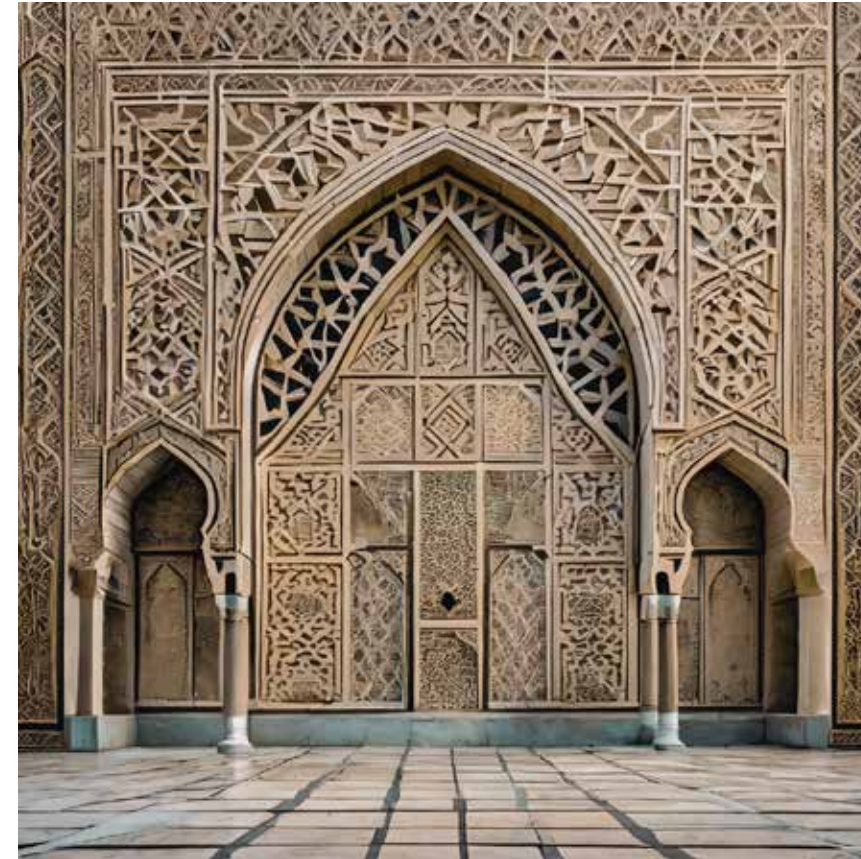




Colored Mural



AI Proposal



Key word for AI

Pointed arches, carved stucco, vine leaves, pseudo vegetal, beveled style, wood, stone



# Raghd Hejazi

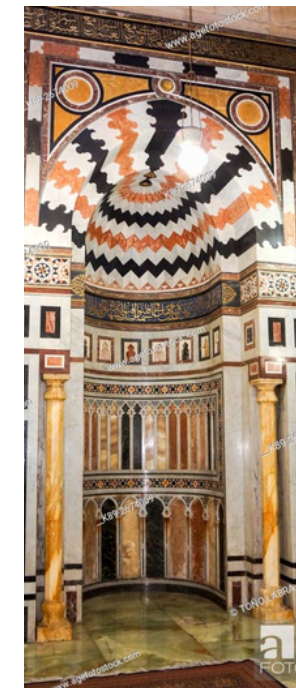
## MAMLUK STYLE

In this mural, the essence of Mamluk architecture breathes through the composition of arches, each bending gracefully to create a sense of movement and rhythm. These arches, a distinctive feature in Mamluk design, are not just structural elements but symbols of the architectural innovation of the era.

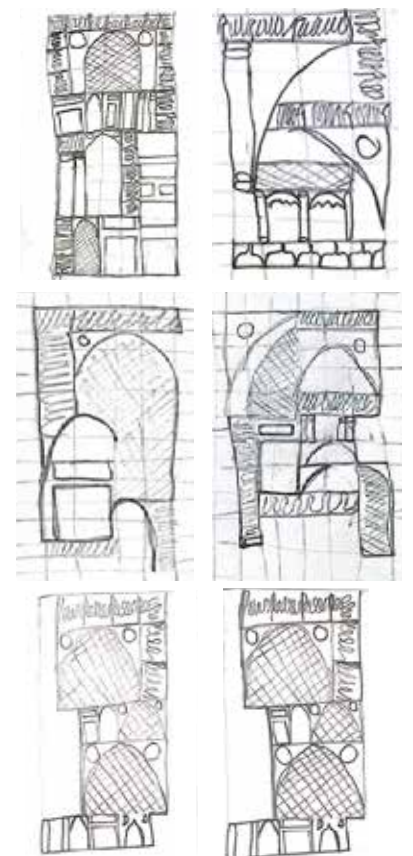
The mural, enriched with the vivid and varied color palette typical of Mamluk art, brings to life the dynamism and richness of this historical period. The interplay of light and shadow within the arches adds depth and perspective, inviting the viewer to explore the intricacies of the design.

This mural celebrates Mamluk craftsmanship, where every curve of the arch and every hue in the palette tells a story of the past, woven seamlessly into the present fabric.

### Inspiration



### Sketch

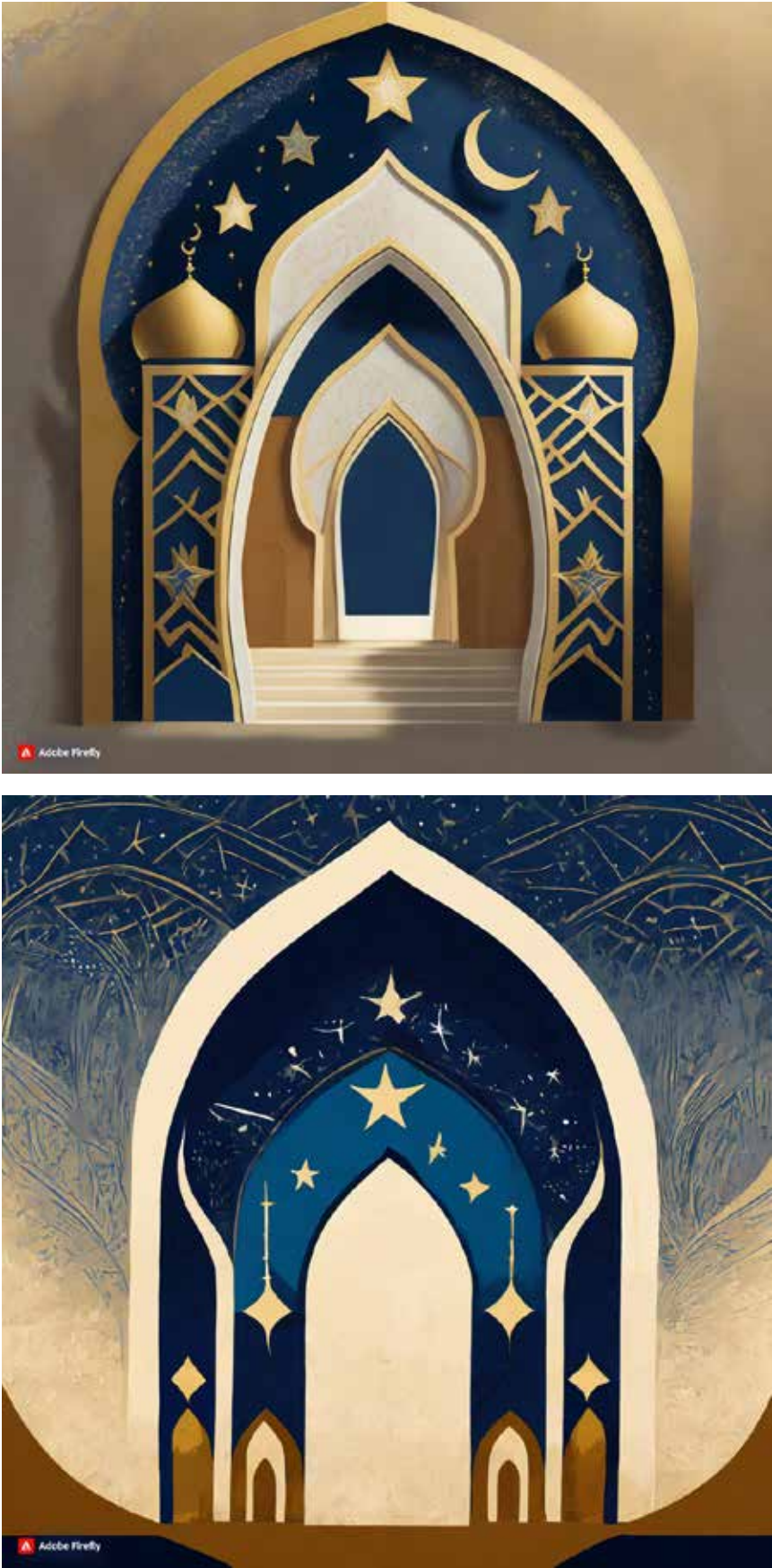




Colored Mural



AI Proposal



Key word for AI  
Mural, Artwork, Semicircular Arch, Star Islamic, Bright Beige Color, Dark Blue



# Roudha Abdallah

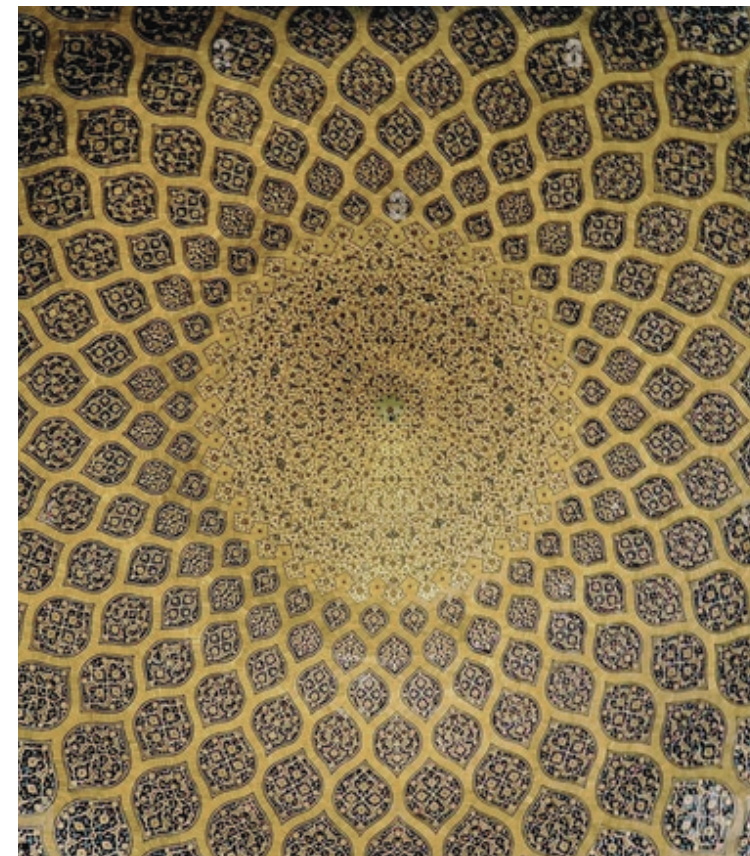
## SAFAVID STYLE

The mural, inspired by the rich artistic traditions of the Safavid era, vividly brings to life the peacock pattern from the Lotfallah Masjid, a hallmark of Safavid design. This pattern unfolds in a splendid array of golden, white, and turquoise, set against a deep blue background, capturing the distinctive color scheme favored by the Safavids.

The mural's unproportioned layout is a nod to the era's pioneering spirit, breaking free from traditional symmetry to offer a more dynamic and fluid visual experience. Alongside the prominent golden, white, and turquoise, the mural incorporates the diverse hues of the haft-rangi palette, a testimony to the Safavids' mastery of color utilization.

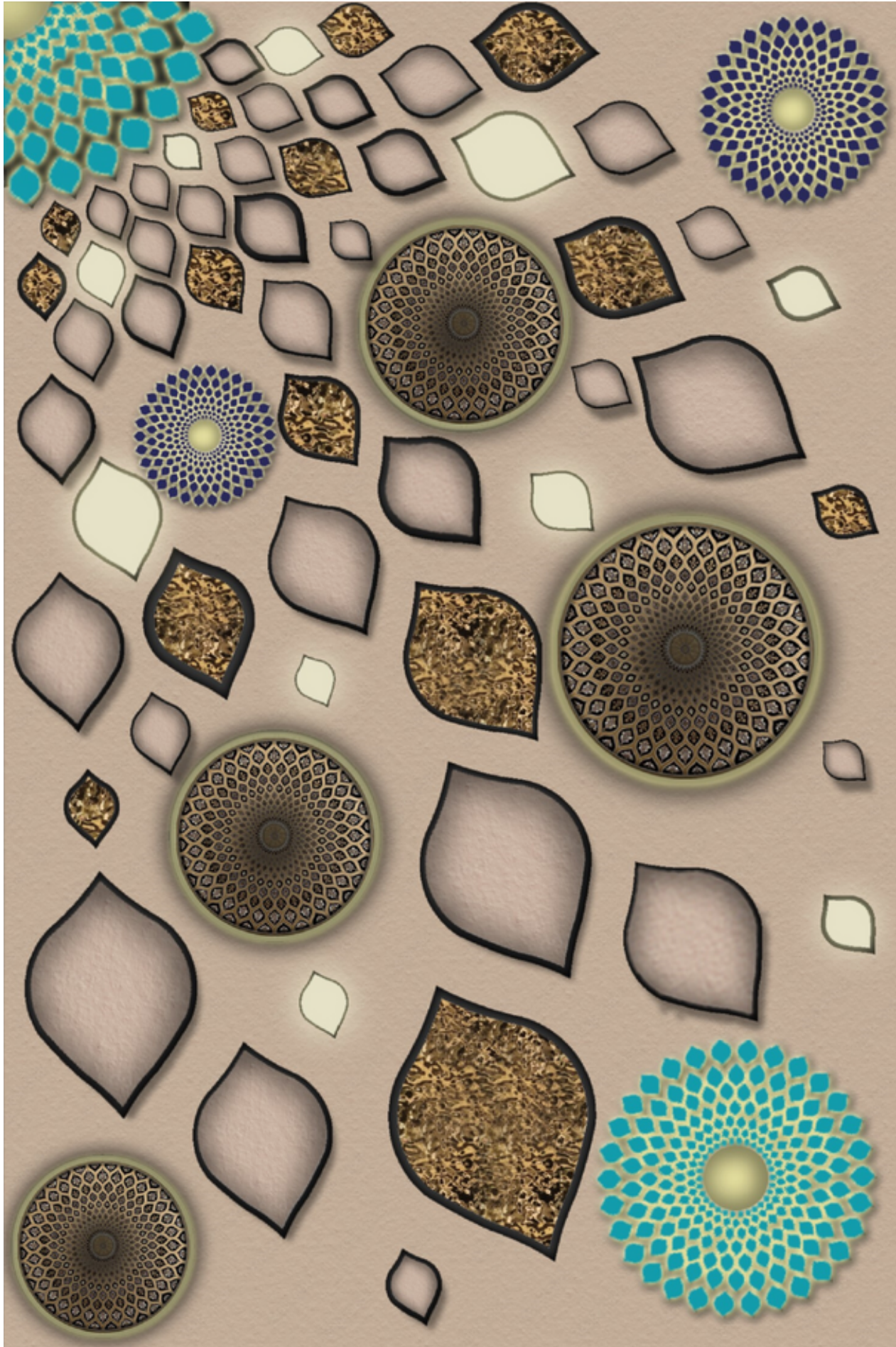
This design philosophy beautifully marries the Safavid's penchant for specific color contrasts with their broader palette, creating a mural that is not only a tribute to their artistic legacy but also a vibrant embodiment of the essence of Islamic art and design.

## Inspiration

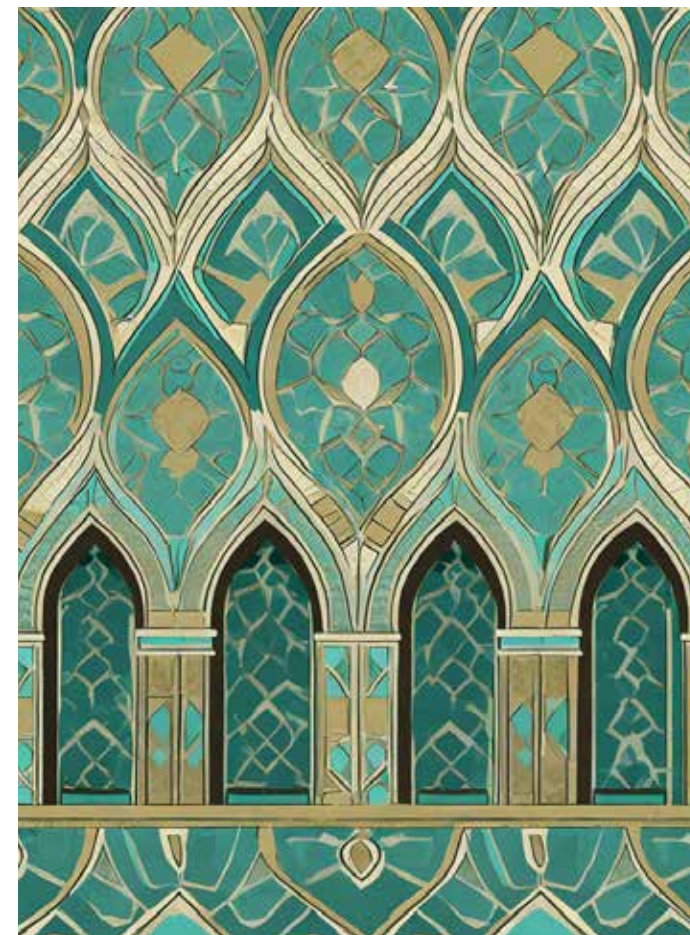
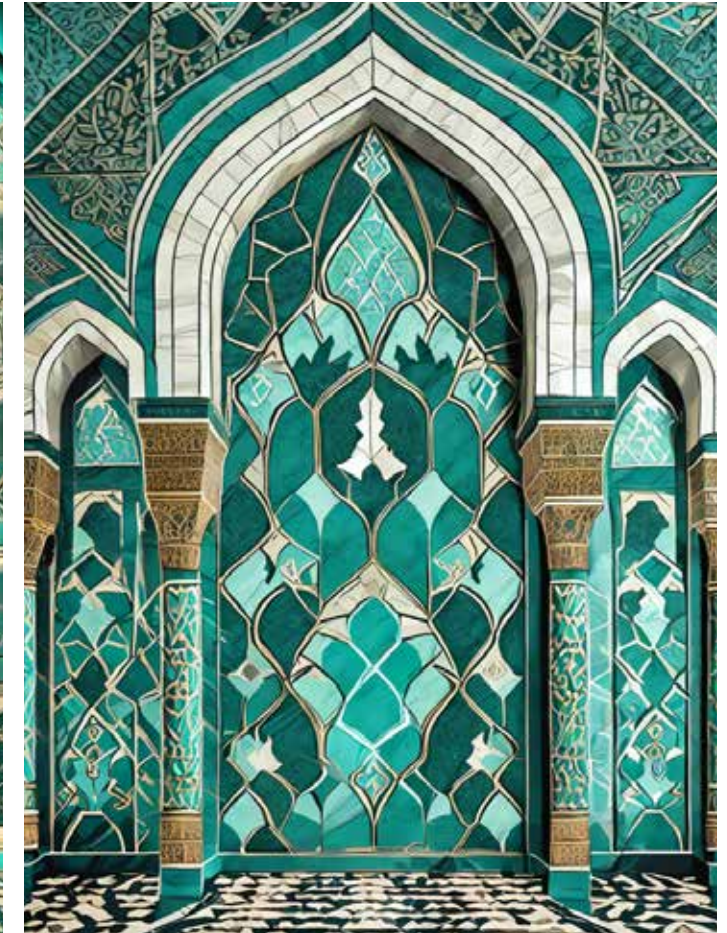




Colored Mural



AI Proposal



### Key word for AI

Mural wall for a hotel lobby with shamsa pattern from the safavids times, add a bit of turquoise color and other materials and colors like beige to the pattern and do not add any arches



## Tia Cibi

### MAMLUK STYLE

A third presentation of a Mamluk mural. This mural celebrates the Mamluk dynasty's rich artistic heritage, showcasing a blend of the dynasty's signature elements. Polychrome marble mosaics create a vivid backdrop, their intricate patterns echoing the sophistication of Mamluk craftsmanship.

The Mamluk rosette, a symbol of beauty and intricacy, features prominently, adding depth and character to the design. Carved wood and stucco elements introduce textural diversity, their detailed workmanship paying tribute to the era's skilled artisans. Stone lattice screens, another hallmark of Mamluk architecture, are woven into the design, offering a play of light and shadow that brings the mural to life.

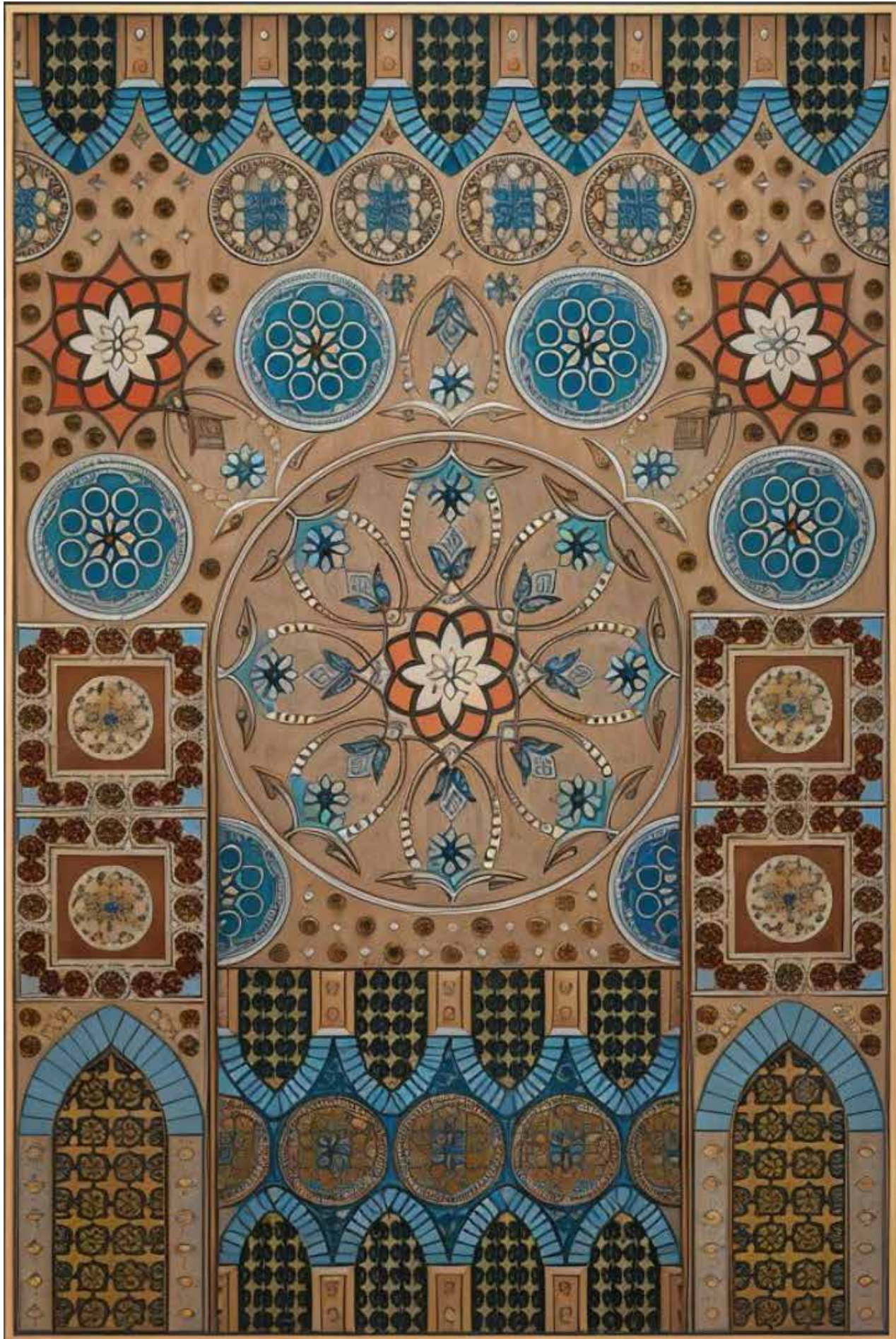
Together, these elements harmonize to form a mural that showcases the aesthetic brilliance of the Mamluk era and captures the essence of Islamic art, where history, culture, and artistic innovation intersect.

### Inspiration





Colored Mural



AI Proposal



Key word for AI

Wall mural art using architectural and art elements from Mamluk Islamic era or dynasty



# Yasmin Olabi

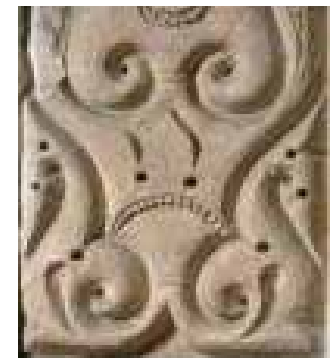
## ABBASID STYLE

The mural is a canvas that whispers the tales of the Abbasid era, weaving together the architectural finesse of pointed arches with the tactile charm of textured stucco walls.

These elements, bathed in shades of understated gray, form a backdrop that speaks of the era's sophisticated yet subtle aesthetic-adding a touch of opulence, a glittering effect reminiscent of antique gold furniture paint dances across the surface, catching the light and the viewer's eye. Pseudo patterns, intricate and mesmerizing, play across the mural, creating a visual rhythm that is both calming and captivating.

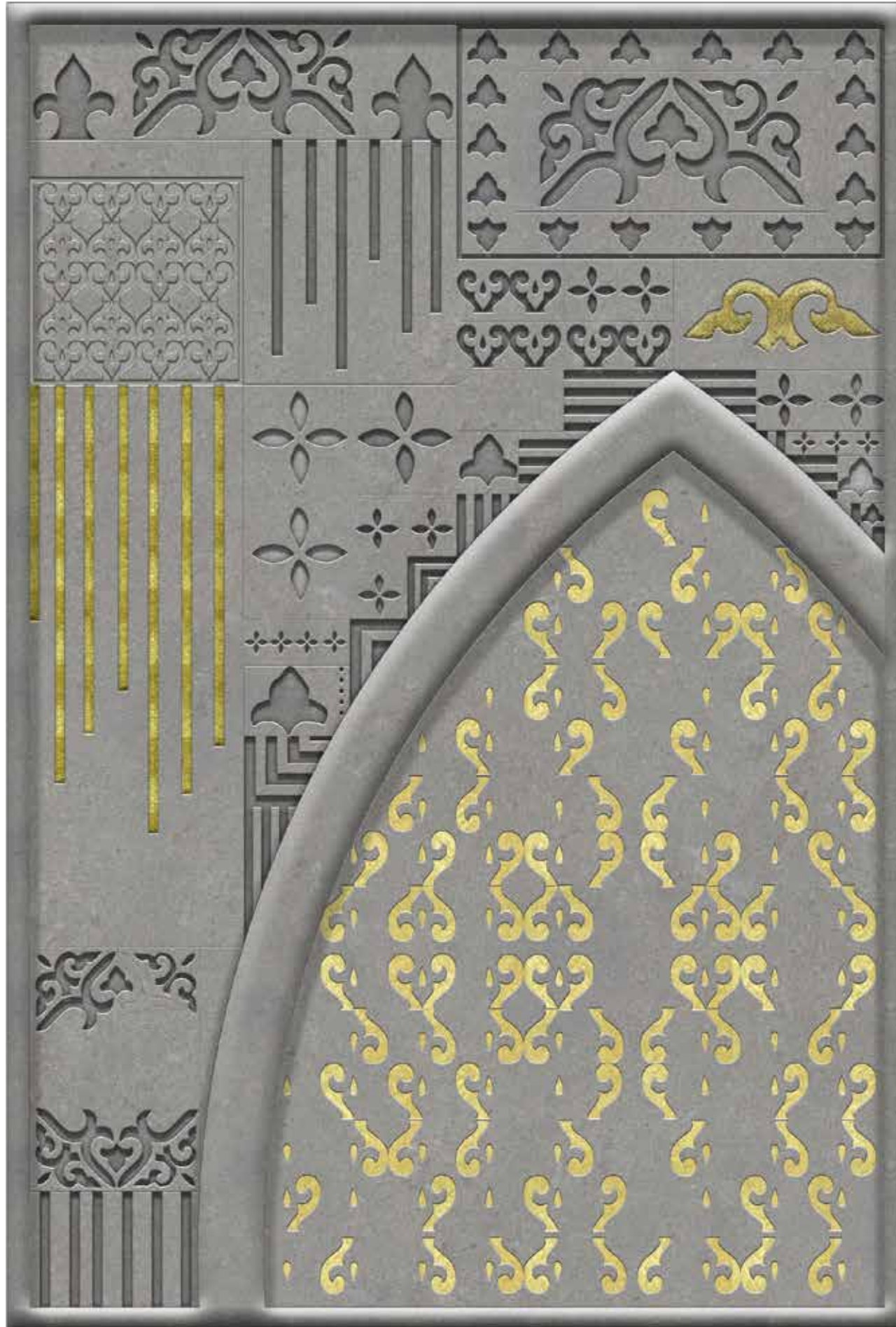
This design narrative not only pays homage to the artistic legacy of the Abbasids but also brings to life the understated elegance and rich cultural tapestry of their time, blending historical motifs with a contemporary artistic interpretation.

## Inspiration





Colored Mural



AI Proposal



Key word for AI

Mural, artwork, abbasid, pointed arch, stucco wall, stucco wall, glittering, pseudo patterns