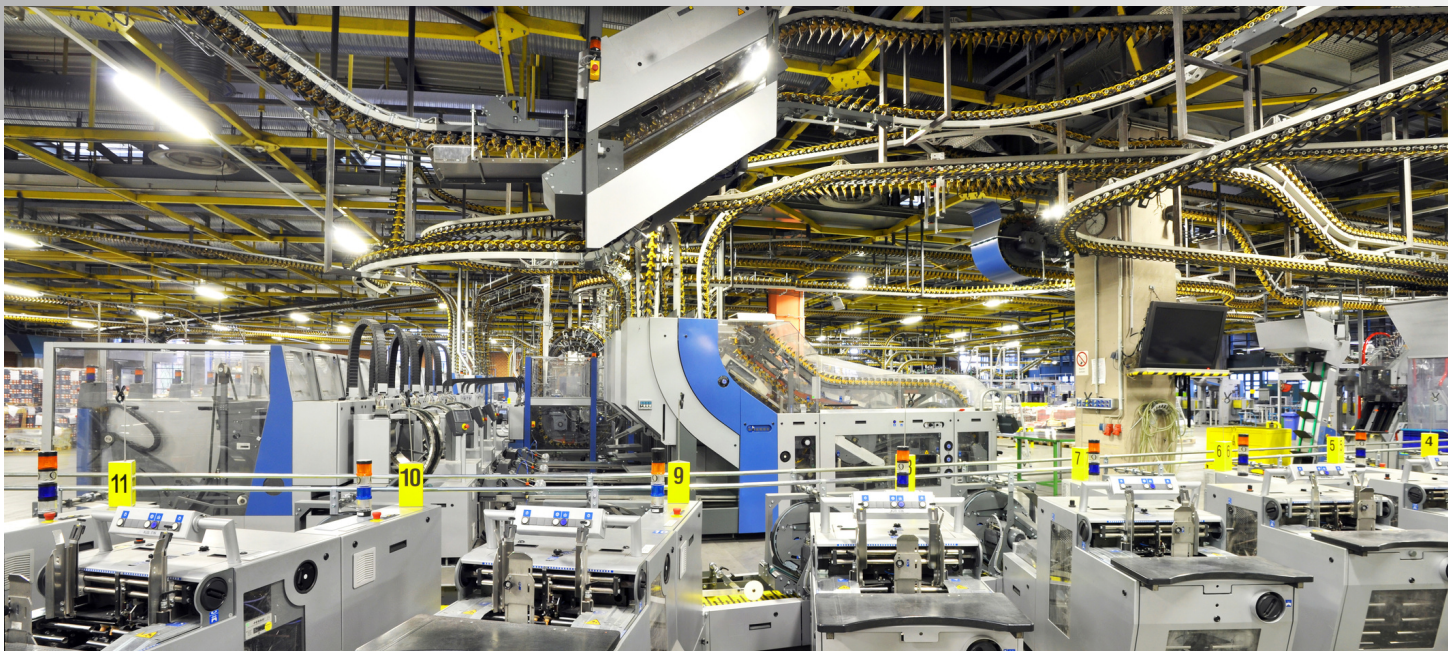


# Case Study: Plant-Wide Standardization



## Issue

The customer has a Rockwell Automation control platform, and every control system is designed and programmed differently. As their plant continues to expand, they need to find a way to standardize this process.

There is room for improved workplace efficiency as new team members need to be trained to support many different machines all programmed differently. There is also a need to be able to recreate the same product from multiple machines in multiple different facilities, while still being able to easily modify their current process and add additional processes.

## Proposed Solution

The proposed solution to the customer was to integrate PlantPAX, which would provide the customer with a single, plant-wide control system and increased flexibility.

PlantPAX would allow the system to be designed in a way that would standardize the integration process resulting in reduced development costs. Using PlantPAX throughout multiple machines in the facility would keep operator interaction consistent, requiring less training on new devices, including during maintenance. Using PlantPAX would also allow for easy modifications and additions to the system, as well as ease of replicating products from one machine or facility to another. Everything would be very transparent, allowing for almost all operations completed in the code to be viewed or modified from the HMI. This easy view of operations would result in less programming assistance and more that can be handled by trained operators.

# Case Study: Plant-Wide Standardization

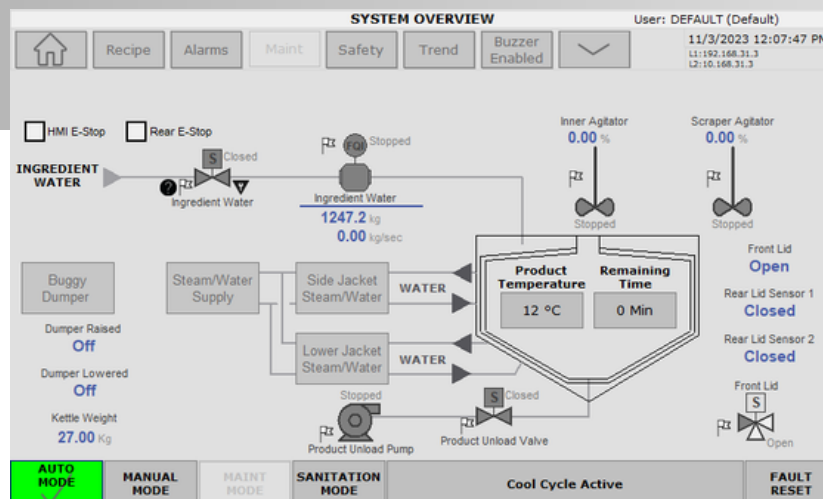
## Challenges Faced

The initial setup of the program took considerable time due to the complex nature of the program. Additionally, the integration of PlantPax faced the customer's system operators with an up-front learning curve. The operators (if logged in) now had increased freedom to change different variables within the process. This change added a significant amount of information to learn up front. The operators required a little more time than expected to feel comfortable with the new system. However, once an understanding was gained, the operators found it to be flexible to do as they required.

## Results & Benefits

The integration of PlantPax achieved the following for the customer:

- Standardized integration.
- Reduced development costs.
- Reduced training for operators.
- Decreased time invested for maintenance and learning the system.
- Easy to modify and update as products change or get added.
- Easy to recreate to ensure the same product can be made despite the machine.
- Very transparent view of operations.



**Contact Us** to discuss integrating PlantPax into your facility.

**BLACKCONTROLS.COM**  
+1 (705) 252-1100  
info@blackcontrols.com



**BLACK CONTROLS**  
COMPANY INC.