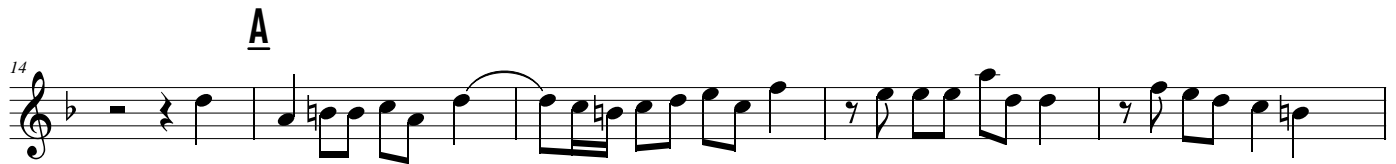
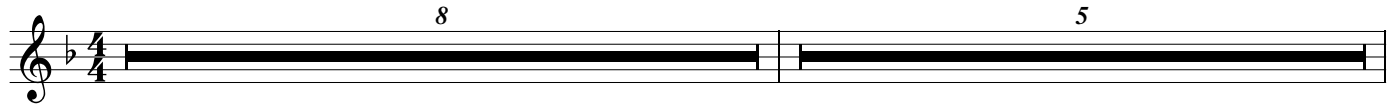


Messiah - He Trusted in God

Soprano Sax


George Frideric Handel

$\text{♩} = 120$ Allegro



D




 = 90 Adagio



Messiah - He Trusted in God

Alto Sax

George Frideric Handel

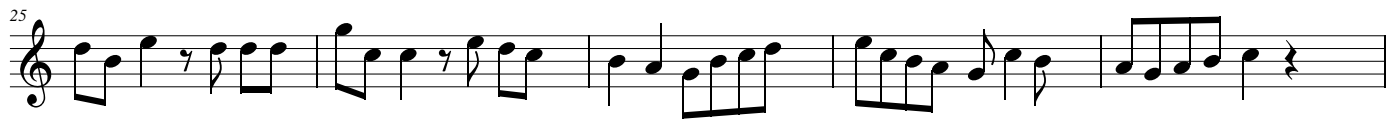
 = 120 Allegro



A



B




C



D



 = 90 Adagio



Messiah - He Trusted in God

Tenor Sax

George Frideric Handel

 = 120 **Allegro**

8 

A

13 

18 

23 

B

28

28

33 

C

39 



= 90 Adagio



Messiah - He Trusted in God

Baritone Sax

George Frideric Handel

 = 120 **Allegro**

The first staff of music is in 4/4 time and contains five measures. The notes are: Measure 1: quarter rest, quarter note G4, eighth notes F4 and E4. Measure 2: eighth notes D4 and C4, quarter note B3, eighth notes A3 and G3. Measure 3: eighth notes F3 and E3, quarter note D3, eighth notes C3 and B2. Measure 4: quarter note A2, quarter rest, eighth notes G2 and F2. Measure 5: quarter note E2, quarter note D2, quarter note C2, quarter rest.

11

A

17

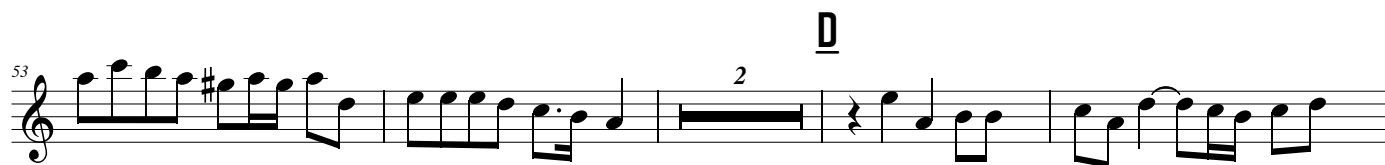
23 

28 **B**



35  Musical notation for measures 35-40. Measure 35: Treble clef, quarter note G4, quarter note A4, quarter note B4, quarter note C5. Measure 36: Whole rest. Measure 37: Whole rest. Measure 38: Quarter rest, eighth note G4, eighth note A4, quarter note B4, quarter note C5. Measure 39: Double bar line. Measure 40: Quarter rest, quarter note B4, eighth note A4, eighth note G4, quarter note F#4, quarter note E4, quarter note D4, quarter note C4.

43 




 = 90 Adagio



Messiah - He Trusted in God

Alto Sax Alt. Soprano

George Frideric Handel

 = 120 **Allegro**


A

[illegible]

19

19

B[illegible]

31  Musical notation for measure 31. It begins with a treble clef and a key signature of one sharp (F#). The melody consists of eighth and quarter notes, with a repeat sign at the end.

36 

C

41

Example 10 continues with measures 41 through 47. The notation shows a sequence of notes and rests, including a key signature change to one sharp (F#) in measure 46.

48 


D



= 90 Adagio



Handel Messiah - He Trusted in God - SATB

 = 120

Allegro



6



11

A



16



This system contains five measures of music. The first staff (treble clef) begins with a half note G4, followed by eighth notes A4, Bb4, and A4, then a quarter note G4. The second staff (treble clef) starts with a half note G#4, followed by eighth notes A#4, B4, and A4, then a quarter note G4. The third staff (treble clef) begins with a half note Gb4, followed by eighth notes A4, B4, and A4, then a quarter note G4. The fourth staff (treble clef) starts with a half note G#4, followed by eighth notes A#4, B4, and A4, then a quarter note G4. The fifth staff (treble clef) begins with a half note G4, followed by eighth notes A4, B4, and A4, then a quarter note G4.

21



This system contains five measures of music. The first staff (treble clef) begins with a half note G4, followed by eighth notes A4, Bb4, and A4, then a quarter note G4. The second staff (treble clef) starts with a half note G#4, followed by eighth notes A#4, B4, and A4, then a quarter note G4. The third staff (treble clef) begins with a half note Gb4, followed by eighth notes A4, B4, and A4, then a quarter note G4. The fourth staff (treble clef) starts with a half note G#4, followed by eighth notes A#4, B4, and A4, then a quarter note G4. The fifth staff (treble clef) begins with a half note G4, followed by eighth notes A4, B4, and A4, then a quarter note G4.

B

26



This system contains five measures of music. The first staff (treble clef) begins with a half note G4, followed by eighth notes A4, Bb4, and A4, then a quarter note G4. The second staff (treble clef) starts with a half note G#4, followed by eighth notes A#4, B4, and A4, then a quarter note G4. The third staff (treble clef) begins with a half note Gb4, followed by eighth notes A4, B4, and A4, then a quarter note G4. The fourth staff (treble clef) starts with a half note G#4, followed by eighth notes A#4, B4, and A4, then a quarter note G4. The fifth staff (treble clef) begins with a half note G4, followed by eighth notes A4, B4, and A4, then a quarter note G4.

B

B

B

31

System 31-35: This system contains five measures of music. The first staff (treble clef) begins with a key signature change to B-flat major (one flat). The melody features eighth and quarter notes, with a half rest in measure 3 and a sharp accidental in measure 4. The second staff (treble clef) provides harmonic support with chords and moving lines. The third staff (treble clef) continues the harmonic texture. The fourth staff (treble clef) has a whole rest in measure 3 and enters with a melodic line in measure 4. The system concludes with a repeat sign.

36

System 36-40: This system contains five measures of music. The first staff (treble clef) continues the melody with eighth and quarter notes. The second staff (treble clef) features a key signature change to C major (no sharps or flats) in measure 3. The third staff (treble clef) has a half rest in measure 3 and enters with a melodic line in measure 4. The fourth staff (treble clef) has a whole rest in measure 3 and enters with a melodic line in measure 4. The system concludes with a repeat sign.

C

41

System 41-45: This system contains five measures of music. The first staff (treble clef) continues the melody. The second staff (treble clef) features a key signature change to C major (no sharps or flats) in measure 3. The third staff (treble clef) has a half rest in measure 3 and enters with a melodic line in measure 4. The fourth staff (treble clef) has a whole rest in measure 3 and enters with a melodic line in measure 4. The system concludes with a repeat sign.

46

Sheet music for 'The Rose Tree' in G major, 2/4 time. The score consists of four staves. The first staff is the melody, starting with a treble clef and a key signature of one sharp (F#). The second staff is a harmonic accompaniment, starting with a treble clef and a key signature of one sharp. The third and fourth staves are a bass accompaniment, starting with a bass clef and a key signature of one sharp. The music is in 2/4 time, indicated by the time signature at the beginning of the first staff. The melody is a simple, catchy tune, and the accompaniment provides a steady harmonic foundation. The score is written in a clear, legible font, with notes and rests clearly visible on the staves.

51

Handwritten musical score for 'The Rose Tree'. The score is written on four staves, each with a treble clef and a key signature of one flat (B-flat). The music is in 2/4 time. The first staff contains the melody, which starts with a quarter rest in the fifth measure. The second staff provides a harmonic accompaniment with eighth and sixteenth notes. The third and fourth staves provide further harmonic support with various note values and rests. The score is divided into five measures by vertical bar lines.

[illegible]

61

Adagio

Adagio

Adagio