

# Messiah - Lift Up Your Heads (Shortened Version)

Soprano Sax

George Frideric Handel

$\text{♩} = 110$

A tempo ordinario

**A**



**B**



**C**



**D**





# Messiah - Lift Up Your Heads (Shortened Version)

Alto Sax

# Geoge Frideric Handel

 = 110    A tempo ordinario

**A**

**B**

11

C

19

**D**

29



# Messiah - Lift Up Your Heads (Shortened Version)

Tenor Sax

George Frideric Handel

$\text{♩} = 110$  A tempo ordinario

**A**



**B**

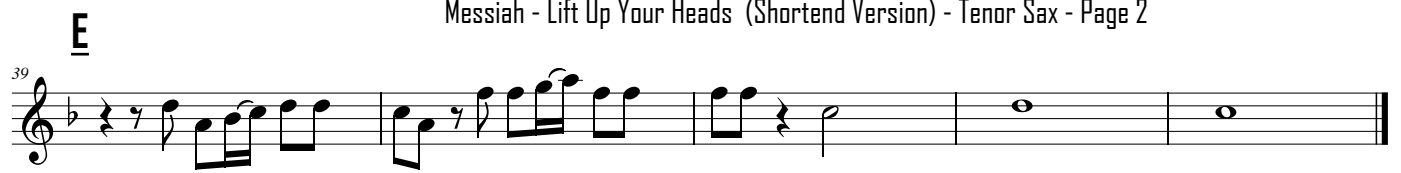


**C**



**D**





# Messiah - Lift Up Your Heads (Shortened Version)

Baritone Sax

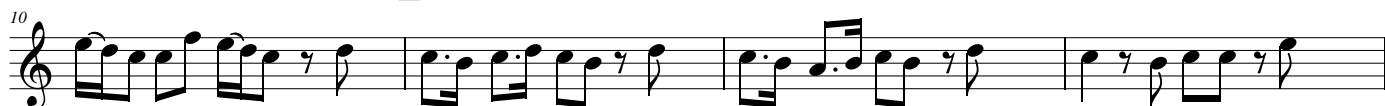
George Frideric Handel

$\text{♩} = 110$  A tempo ordinario

A



B



C



D







# Messiah - Lift Up Your Heads (Shortened Version)

Alto Sax Alt. Soprano

# George Frideric Handel

 = 110    A tempo ordinario

**A**

[illegible]

**B**

[illegible]

15



**C**

19 

24 

**D**

29 

34 

## Messiah - Lift Up Your Heads (Shortened Version) - Alto Sax Alt. Soprano - Page 2



Handel Messiah - Lift Up Your Heads (Shortened Version) - SATB

$\text{♩} = 110$  A tempo ordinario

A tempo ordinario

A tempo ordinario

A tempo ordinario

A

This system contains the first five measures of the piece. It features four staves: a vocal SATB line at the top and three piano accompaniment staves below. The key signature has one flat (B-flat) and the time signature is 4/4. The tempo is marked 'A tempo ordinario' with a quarter note equal to 110 beats per minute. The first measure has a vocal entry on the first staff. The piano accompaniment consists of rhythmic patterns in the right hand and more melodic lines in the left hand. A rehearsal mark 'A' is placed above the fifth measure.

6

This system contains measures 6 through 9. The vocal line continues with a melodic phrase. The piano accompaniment provides harmonic support with various rhythmic figures. The system concludes with a full chord in the piano accompaniment.

B

10

B

B

B

This system contains measures 10 through 13. It begins with a rehearsal mark 'B' above the first measure. The vocal line has a melodic entry. The piano accompaniment features more active rhythmic patterns. There are three additional rehearsal marks 'B' placed above the second, third, and fourth measures of this system.

14

This system contains measures 14 through 17. It features four staves of music. The first staff has a treble clef and a key signature of one flat. The second and third staves have a treble clef and a key signature of one flat. The fourth staff has a treble clef and a key signature of one flat. The music consists of eighth and sixteenth notes, with some rests and accidentals.

18

This system contains measures 18 through 22. It features four staves of music. The first staff has a treble clef and a key signature of one flat. The second staff has a treble clef and a key signature of one flat. The third staff has a treble clef and a key signature of one flat. The fourth staff has a treble clef and a key signature of one flat. The music consists of eighth and sixteenth notes, with some rests and accidentals. A repeat sign is present at the beginning of the system.

23

This system contains measures 23 through 27. It features four staves of music. The first staff has a treble clef and a key signature of one flat. The second staff has a treble clef and a key signature of one flat. The third staff has a treble clef and a key signature of one flat. The fourth staff has a treble clef and a key signature of one flat. The music consists of eighth and sixteenth notes, with some rests and accidentals. A repeat sign is present at the beginning of the system.

28

**D**

This system contains measures 28 through 32. A large 'D' with a bar underneath is positioned above the first measure. The music is written for four staves in a key with one flat (B-flat). Measure 28 begins with a D4 quarter note in the first staff, followed by a descending eighth-note scale in the second staff. Measures 29-32 continue with various rhythmic patterns, including eighth and sixteenth notes, and rests. A long horizontal slur is placed over the top staff from measure 30 to measure 32.

33

This system contains measures 33 through 37. The music continues with complex rhythmic patterns, primarily using eighth and sixteenth notes across all four staves. The key signature remains one flat.

38

**E**

This system contains measures 38 through 42. A large 'E' with a bar underneath is positioned above the first measure. The music continues with rhythmic patterns, but in measure 38, the first staff has a dotted quarter note and the second staff has a half note. From measure 40 onwards, the second, third, and fourth staves contain whole notes, while the first staff continues with eighth-note patterns. The system concludes with a double bar line at the end of measure 42.

44