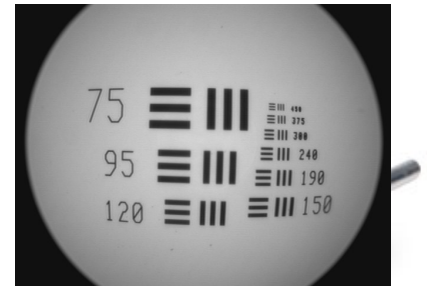


ENDOSCAN™

RIGID SCOPE OPTIC SCANNER

Visually inspects the internal optics of rigid scopes in seconds!

The EndoScan™ is an easy-to-use device for analyzing problems with the interior optics of rigid scopes. EndoScan™ enables users to further evaluate the scope image by “looking inside” to identify problems such as cracked lenses, moisture, debris and lens degradation.



Features & Specifications

- Adapts to standard endoscope video camera for documentation.
- Fits endoscopes with standard endoscope eyepieces
- Fits any endoscope diameter and length
- Precision glass imaging lens for the clearest view of endoscopes interior
- Dimensions: 4.5" long x 2" diameter, 5 oz

Ordering Info:

- 8900034 EndoScan Rigid Scope Optic Tester
- 8900077 EndoLume Illumination Tester w/ case and adaptors
- 8900066 Portable LED Light Source
- 8900096 Basic Kit: EndoLume + LED Light Source + Light Cord
- 8900097 Advanced Kit: EndoScan + EndoLume + LED Light Source + Light Cord

INSPECT + DETECT

Inspect endoscopic equipment like the pros! The EndoScan™ and EndoLume™ devices are portable and suitable for use in Sterile Processing, Biomedical Engineering and for repair facilities, and field service personnel.

ENDOLUME™ ILLUMINATION TESTER

The EndoLume™ is a portable handheld device, that consists of a custom-designed integrating sphere and light detector, precision light meter with 5-digit digital display, and adaptors to connect with all common endoscopic equipment. EndoLume™ identifies the true source of illumination problems by quantitatively measuring Light output on:

- Endoscopic Light Sources (all major brands and types)
- Fiber Optic Cables (all major brands including Olympus, ACMI, Wolf, Stryker and Storz)
- Light fiber optics on rigid and flexible endoscopes

Features & Specifications

- Patented Optical Bridge™ technology
- Built-in color correction filter
- Accuracy: 5% of reading
- Measurement Range: 0-5000 lumens
- Dimensions of Meter: 6.0 x 3.3 x 1.3", w/ Case: 16 x 12 x 6"
- Weight of Meter: 13.0 oz., Case: 7.4 lb
- Annual Calibration recommended



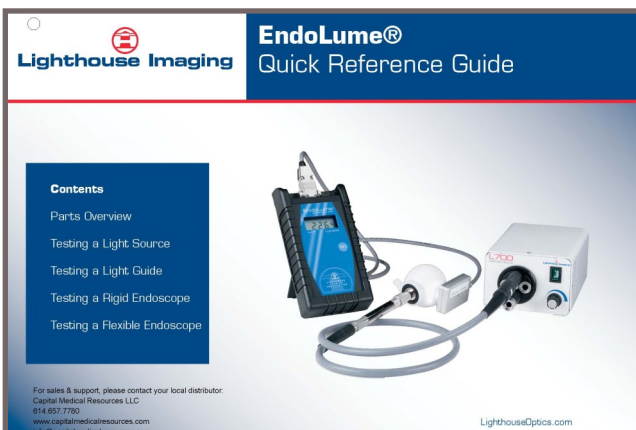
8900077 EndoLume

Why Measure?

Troubleshooting illumination in endoscopic equipment is a real challenge as the "problem" may be present in any part of the illumination pathway. Lighting problems can result in disrupted or insufficient light at the surgical site.

Visual inspection is virtually impossible, in many cases, and in others, highly subjective. By measuring this equipment on a regular basis you can:

- Troubleshoot individual components or the entire lighting pathway to remove and repair damaged equipment
- Verify performance of repaired endoscopic equipment
- Track endoscopic equipment quality as part of a preventive maintenance plan
- Determine baseline specs of new equipment
- Eliminate unnecessary and expensive lamp replacements



Free Laminated Reference Guide Included!
Picture shows 8900096 Basic Kit

