



### 3 Ton Badland Jack Mount Installation Manual

*Thank you for your purchase of our HDS Engineering Jack Mount.*

*Please follow the steps below to install and start using your mount.*

**Step 1:** Remove all items from the package you received and locate the backing plate shown below. This will be fastened to the rear portion of the jack.



*Figure 1: Badland Jack Backing Plate*

**Step 2:** Remove the two rear wheel nuts using a 19mm socket, then remove the four M8 screws and lock washers using a 5mm hex key.



*Figure 2: Rear wheel and screw removal*

**Step 3:** Install the backing plate onto the back side of the jack by lining up the four holes on either side. *This may require the use of a non-marring hammer to tap into place as the bracket is designed to be a snug fit.* Do not reinstall the two split-lock washers on the bottom two M8 screws, these washers will not allow the jack to fit into the base mount. Hand tighten the four M8 screws to secure the backing plate then reinstall the wheels and M12 nylock nuts.

***DO NOT OVERTIGHTEN M8 SCREWS AS THIS MAY RESULT IN DAMAGE TO THE ALUMINUM THREADS!***

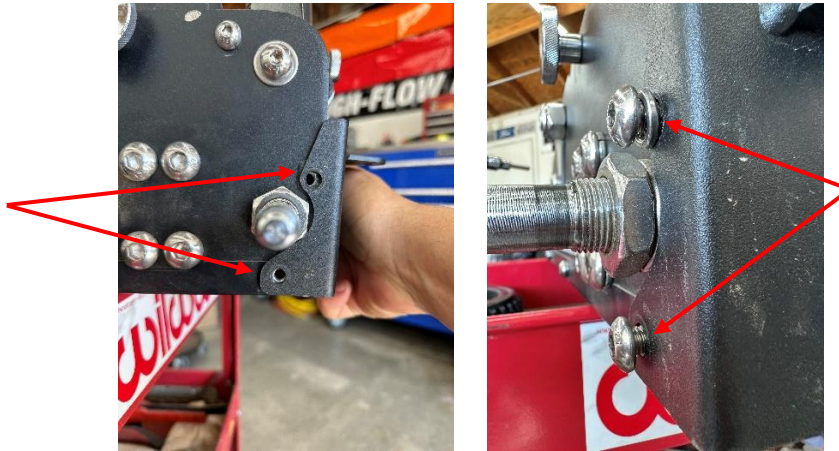


Figure 3: Installation of backing plate

**Step 4:** Using the pre-cut  $\varnothing 3/8$ " universal hole pattern in the base mount, fasten the mount in your desired location. If you opted for the raw steel version, welding the base mount into place is also an option prior to painting. After securely fastened to the vehicle, the jack handle can be broken down and stored below the jack in the Quickfist clamps.



Figure 4: Optional mounting method shown

**You are now ready to hit the trails knowing your jack is securely fastened to your vehicle rattle free and ready to use at any time.**

*If you have any questions or concerns, please contact us at [info@hds-engineering.com](mailto:info@hds-engineering.com) or (714) 851-3463*