



The Lake Windcrest Ledger

THE LWWGA NEWSLETTER

July, 2024
Volume 3, Issue 6



FROM THE EDITOR'S DESK

Although the summer solstice arrived June 20th, our Texas summer has been in full force for the last two months.

When temperatures consistently climb into the 90's and even creep upward toward 100°, all of us who love the game must be cognizant of the dangers of heat exhaustion and heat stroke. Our club has posted pertinent infor-

mation about the symptoms of these heat related conditions in the pro shop and in the locker rooms. Acquaint yourself with this information not only for your own protection, but so you might recognize a problem should a fellow golfer begin to show symptoms.

Keeping hydrated is of paramount importance.

June was a very busy month for our WGA with numerous competitions both home and away— all results are included in

this issue. July is a little less busy, but our weekly games will continue as usual with a 9 am shotgun.

As was announced in a general email, all of the proposed changes in the By-Laws & Standing Rules were approved. Among those changes was allowing "gimmee" putts during July and August on playdays where games are neither Low Net nor Stableford, but have a closest to the pin proximity. Keep in mind, the putt must be within the length of a playday scorecard.

Finally, we welcome Annemarie Tobin to the WGA Board as an appointed replacement for departing Tournament Co-Chair Sue Ball. Annemarie has graciously volunteered to maintain all the statistics for playdays. Therefore, all reps are asked to report playday results to her in the future.

Wishing you all a safe and Happy 4th of July!

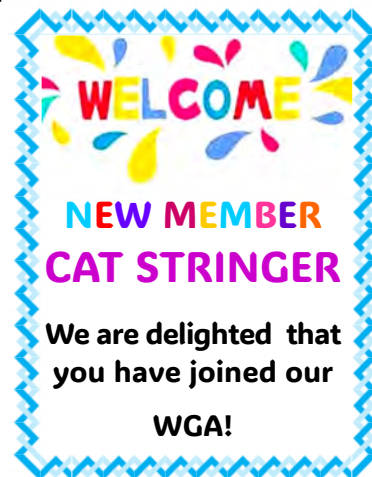


Joni Stoy, Editor



Join the fun in August when the guys and gals of the MGA & WGA join forces on the golf course. Teams of men and women will compete for prizes. Currently in the planning stages ...could be teams of two, three or four with at least one lady on each team. Could be a shamble, two best balls, quota...lots of team games to consider.

MARK YOUR CALENDAR FOR SATURDAY AUGUST 10TH
WE NEED OUR WGA MEMBERS TO SIGN UP!
MORE DETAILS IN THE AUGUST NEWSLETTER



Inside this Issue



2	JUNE PLAYDAY WINNERS JUNE CALENDAR
3	LADIES CHALLENGE CUP MATCH RESULTS & MID-SEASON STANDINGS
4	INTERCLUB RESULTS; LADIES SUMMER GOLF SPECIAL; BYOB
5	RESULTS WGA/CRAWFORD SCRAMBLE; MEMBER/MEMBER RESULTS
6-7	WGA SCRAPBOOK

June Playday Winners

JUNE 1ST GAME: Par3's and Par 5's **JUNE 5, 7 & 8 GAME: LOW NET**

DAY	GAME WINNER	LOW PUTTS	DAY	GAME WINNER	LOW PUTTS
SATURDAY	SHERI CAPRIO	SHERI CAPRIO	WEDNESDAY	RAINED OUT	NO GAME
JUNE 12, 14 & 15 GAME: PAR 4'S			FRIDAY	ANNEMARIE TOBIN	KATHLEEN SULLINS
DAY	GAME WINNER	LOW PUTTS	SATURDAY	PATRICIA THOMPSON	MARION NOJEK

DAY	GAME WINNER	LOW PUTTS	JUNE 19, 21 & 22 GAME: STABLEFORD		
WEDNESDAY	WGA/CRAWFORD SCRAMBLE		DAY	GAME WINNER	LOW PUTTS
FRIDAY	NO GAME: INSUFFICIENT NUMBER OF PLAYERS		WEDNESDAY	COURSE CLOSED FOR AERIFICATION	
SATURDAY	CINDY BAILEY	KATHLEEN SULLINS	FRIDAY	PATTI HOWARD	PJ MULLARKEY KATHLEEN SULLINS

JUNE 26, 28 & 29 GAME: BLIND NINE			COURSE CLOSED FOR AERIFICATION	
DAY	GAME WINNER	LOW PUTTS	FRIDAY	PATTI HOWARD PJ MULLARKEY KATHLEEN SULLINS
WEDNESDAY	LAURA HITTler	SHIRLEY ROBERTSON	SATURDAY	TOURNAMENT TEE FOR TWO 
FRIDAY	CHRIS HOFFMAN	SHERI CAPRIO CHEY O’ROURKE JONI STOY	 CONGRATULATIONS to the ladies listed below who had at least one birdie or one chip-in during the month of June!	
SATURDAY	ANNEMARIE TOBIN	SHERI CAPRIO		



SHERI CAPRIO, MARION NOJEK AND
KATHLEEN SULLINS



SHERI CAPRIO, MARION NOJEK, KATHLEEN
SULLINS, ANNEMARIE TOBIN



JULY CALENDAR

W, F & S JULY 3, 5 & 6	LOW NET: THE PLAYER WHOSE GROSS SCORE MINUS HANDICAP IS LOWEST SHARES THE CASH POT WITH LOW PUTTS AND EARNS PRO SHOP CREDIT.
W, F & S JULY 10, 12 & 13	PICK 9: PICK THE BEST NET SCORE ON (5) PAR 4's (2) PAR 3's, AND (2) PAR 5's; THE LOWEST (9) HOLE TOTAL WINS. SCORECARD PLAYOFF IS USED TO BREAK ALL TIES. CLOSEST TO THE PIN ... "GIMMEE" PUTTS ALLOWED.
W, F & S JULY 17, 19 & 20	STABLEFORD: THE PLAYER WITH THE MOST POINTS SHARES THE CASH POT WITH LOW PUTTS AND EARNS PRO SHOP CREDIT. NET BOGEY= 1 PT., NET PAR = 2 PTS., NET BIRDIE = 3 PTS., NET EAGLE= 4 PTS, NET DOUBLE EAGLE= 5 PTS.
W, F & S JULY 24, 26 & 27	EVEN HOLES: TOTAL THE NET SCORES ON ALL EVEN HOLES. LOWEST TOTAL SCORE WINS. SCORECARD PLAYOFF FOR ALL TIES. CLOSEST TO THE PIN... "GIMMEE" PUTTS ALLOWED.
W JULY 31	LOW NET: THE PLAYER WHOSE GROSS SCORE MINUS HANDICAP IS LOWEST SHARES THE CASH POT WITH LOW PUTTS AND EARNS PRO SHOP CREDIT.



Ladies Challenge Cup

Our most recent match was at home versus Kingwood. Although we were missing a couple of our regular players, those who don't play as often stepped up and did a "yeoman's job".

Kingwood sent their top tier players and are always considered one of the most formidable opponents in LCC. The scoreboard to the right shows our win in the net category which is the area of competition where we can be most competitive. Kingwood earned 52.5 points compared to our 37.5 in gross, but we proudly posted 47.5 points over Kingwood's 42.5 for the net win.

With the elimination of divisions in LCC this year, the competitive landscape is much different...all nine clubs will play each other. The chart below shows our current standing. Our next match is scheduled for Friday, July 19th at WCC Traditions. GOOD LUCK TEAM!

Lake Windcrest				Kingwood			
PLAYERS		GROSS	NET	GROSS	NET	PLAYERS	
MARION NOJEK		9	8.5	9	9.5	JULIE ROBICHAUX	
DEBORAH YARBROUGH						BEVERLY HENDERSON	
CHARMELLE YONDRAK		6	10	12	8	KIM BARBATO	
PATI HOWARD						BETTE McDERMOTT	
DONNA MOORE		8	10	10	8	JENNY MICHELETTI	
PATTY MONCRIEF						ANNE COUGHLIN	
SHERI CAPRIO		6.5	9	11.5	9	GINGER DIETER	
KATHLEEN SULLINS						LISA LEIGH	
SHIRLEY ROBERTSON		8	10	10	8	BETTY CONKLIN	
MARY ARMBRISTER						LORETTA HIGLES	
		37.5	47.5	52.5	42.5		
		TOTAL		TOTAL			

Team	Gross	Net	Gross	Net	Gross	Net	Gross	Net	Gross	Net	Gross	Net	Gross	Net
	Feb 15 - Mar 30				Apr 1 - May 15				May 15 - June 30					
Lake Windcrest	Augusta Pines		bye		Elkins Lake		Walden		Bentwater		Kingwood			
	40.0	41.0			45.5	49.5	50.5	47.5	19.5	34.0	37.5	47.5	193.0	219.5
Falcon Point	Elkins Lake		Walden		Bentwater		Kingwood		Traditions		Woodlands			
	33.5	49.0	41.0	39.0	22.0	44.5	44.5	56.5	51.0	49.0	29.5	43.0	221.5	281.0
Walden	Woodlands		Falcon Point		Augusta Pines		Lake Windcrest		Elkins Lake		bye			
	32.0	52.0	49.0	51.0	44.0	50.0	39.5	42.5	47.0	56.0			211.5	251.5
Kingwood	bye		Traditions		Woodlands		Falcon Point		Augusta Pines		Lake Windcrest			
			48.0	44.0	48.0	52.0	45.5	33.5	56.0	47.5	52.5	42.5	250.0	219.5
Elkins Lake	Falcon Point		Augusta Pines		Lake Windcrest		bye		Walden		Bentwater			
	56.5	41	50.5	44	44.5	40.5			43	34	37.5	49	232.0	208.5
Woodlands	Walden		Bentwater		Kingwood		Traditions		bye		Falcon Point			
	58.0	38.0	50.0	45.0	42.0	38.0	56.5	43.5			60.5	47.0	267.0	211.5
Traditions	Bentwater		Kingwood		bye		Woodlands		Falcon Point		Augusta Pines			
	39.0	49.5	42.0	46.0			33.5	46.5	39.0	41.0	35.5	37.0	189.0	220.0
Augusta Pines	Lake Windcrest		Elkins Lake		Walden		Bentwater		Kingwood		Traditions			
	50.0	49.0	39.5	46.0	46.0	40.0	25.5	38.5	34.0	42.5	54.5	53.0	249.5	269.0
Bentwater	Traditions		Woodlands		Falcon Point		Augusta Pines		Lake Windcrest		Elkins Lake			
	51.0	40.5	40.0	45.0	68.0	45.5	64.5	51.5	70.5	56.0	52.5	41.0	346.5	279.5



Just last week Lake Windcrest hosted Northwoods Interclub. All eleven clubs were represented totaling 87 players.

Preparations for a tournament of this size are extensive and without the help of the Pro Shop staff and the Food & Beverage folks, it wouldn't have been possible.

Brett did a great job determining the pairings/flights and he and Micah prepared 19 different scoreboards...8 for the flights and another 11 for determining the top four performers from each club. Checking the accuracy of 87 cards and posting the results on these 19 scoreboards was, indeed, a major undertaking. **THANKS TO BRETT & MICAH!**

Accommodating 87 guests for lunch also required special planning. Food & Beverage Manager Brian and our chef Angela handled the numbers efficiently and there was plenty of chicken on the salad bar for those coming in late which has not always been the case at other Interclub events. **THANKS TO BRIAN & ANGELA.**

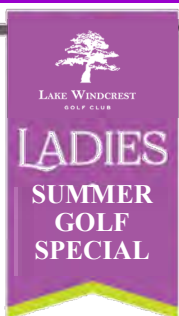
When 87 players arrive to check in for an event, and especially when money changes hands, you need to have an efficient system. Special **THANKS TO DONNA MOORE & SHERI CAPRIO** for their assist at the registration table and to **PJ MULLARKEY AND PATTI HOWARD** who distributed the cart snacks!

And finally, how did our team fare in the competition?? As you can see in the, adjacent table, our top 4 players took honors among the eleven clubs for most points this month with 152. Our stars this month — **CONGRATULATIONS TO CHARMELE VONDRAK , PATTI HOWARD & PJ MULLARKEY FOR 1ST places** in their respective flights **DONNA MOORE for 2ND place** in her flight and **SHERI CAPRIO for 3RD place** in her flight.

Lots of positive feedback about our lovely course. On to Golf Club of Houston on July 25TH. Watch for the sign up announcement.

TOTAL POINTS BY CLUB

CLUB	FEB	MAR	April	May	JUNE	TOTAL
BENTWATER	147	117	116	134	142	656
DEERWOOD	121	142	128	126	110	627
GOLF CLUB OF HOUSTON	137	125	125	144	119	650
KINGWOOD	140	134	121	133	150	678
LAKE WINDCREST	146	111	120	119	152	648
NORTHGATE	146	92	130	157	128	653
WALDEN on LK CONROE	131	118	130	125	138	642
WALDEN on LK HOUSTON	136	134	107	125	140	642
WILLOW CREEK	133	116	151	117	133	650
WOODLANDS COUNTRY CLUB	150	114	49	100	130	543
WOODLANDS CC TRADITIONS	147	123	129	122	144	665



This is the second of Director of Golf Instruction Bill Wening's summer monthly specials and is scheduled for Tuesday, July 9th from 3 until 4 pm.

The three monthly opportunities being offered (June, July & August), replace the weekly clinics that will return in September. These Summer Ladies Golf Clinics are designed to lower your score while the temperature is rising.

Cost: \$40/person. Sign up directly on the link below:

<https://lakewindcrestgolfclub.wufoo.com/forms/qiv6oq21pxnio0/>



IF AT FIRST YOU DON'T
— SUCCEED —

RE-SCHEDULE

AND
TRY AGAIN

BYOB

SUNDAY JULY 14, 2024
5 PM LATE AFTERNOON START
COMBINED TEAM SCORES
GROSS & NET

ENTRY FEE \$20 CASH PER COUPLE



SIGN UP WITH JONI BY THURSDAY JULY 11



Our WGA ladies had a great opportunity to make new golf friends when our WGA Vice-President Sheri Caprio organized a fun event with the group of men whose tee times follow ours on our weekday playdays.

The 12 members of the group organized by Phil Crawford (aka "The Crawford Group") joined 12 of our ladies forming mixed teams of two for a scramble. Winners who placed and carried off the cash prizes are shown in the adjacent scoreboard. The ladies from the WGA who placed 1st, 2nd and 3rd respectively with their partners were Chey O'Rourke, Christine Hofmann, and Kathleen Sullins. The event was so successful that a second event is tentatively scheduled for August.

WGA &			CRAWFORD		
9:00	Noah Nguyen Shirley Robertson	66	9:00	L.C. Wilson Charmelle Vondrak	66
9:08	Chris Smelcer Chey O'Rourke	63	9:08	Bert Stull Sheri Caprio	67
9:16	Keith Colvin Laura Hittler	67	9:16	Bill Warner Kathleen Sullins	66
9:24	Lynn Rippelmeyer Blake Lagrone	72	9:24	Larry Aimes Peggy Mullarkey	70
9:32	Phil Crawford Patti Howard	69	9:32	Stan Muckenthaler Mary Armbruster	72
9:40	Dale Petty Christine Hofmann	64	9:40	Bob Walsh Joni Stoy	70

TEE FOR TWO

THE WGA MEMBER/MEMBER

1A	JANICE KNOTT JONI STOY	107/79
1B	JINA AUGER DONNA MOORE	1st Place Gross 75/66
1B	SHIRLEY ROBERTSON CHEY O'ROURKE	1st Place Net 80/68
18A	SHERI CAPRIO CHARMELLE VONDRAK	2nd Place Gross 83/71
18A	LAURA HITTLER CINDY BAILEY	91/74
18B	STEPHANIE ROMERO MARCIA WILKINS	96/77
18B	PJ MULLARKEY PATRICIA THOMPSON	2nd Place Net 92/70
17	DEB NELSON LISA ROBBINS	100/76
17	KATHLEEN SULLINS PATTI HOWARD	93/71

CLOSEST TO THE PIN	#8	STEPHANIE ROMERO
CLOSEST TO THE PIN	#16	DONNA MOORE



We had a dry, sunny and very warm day for our Member/Member annual tournament on June 22nd. Not only did we have good conditions for play, but we had a great level of participation, fielding 18 players for the event. Since we had an uneven number of foursomes, tournament rules require that the remaining twosome be accompanied by a marker. Thanks to Karen Christian for filling this role and to Janice Knott for clicking away on her camera for the scrapbook pix.

All seemed to enjoy the lunch and their teapot surprises. The results of the tournament are shown on the adjacent scoreboard and the memorable moments from the MEMBER/MEMBER can be found on the scrapbook pages.

WGA Scrapbook

The Member/Member



*Our teams are ready
for a tee party!*



New Asst. Pro Emmett
goes over the rules.



Most spins gave the
magic putt.

Our Winners

L to R: Donna Moore, Shirley Robertson.
Chey O'Rourke, Patricia Thompson, Sheri
Caprio, PJ Mullarkey, Stephanie Romero ,
Charmelle Vondrak

Not Pictured: Jina Auger

More of the WGA Scrapbook

Interclub Winners



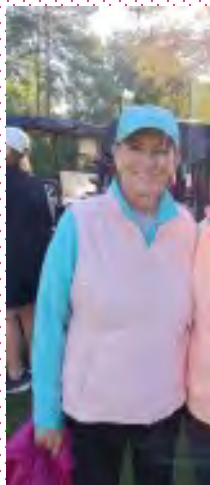
FLIGHT 2

LIVERMORE, LISA (BENTWATER)	3 rd	36
BROWN, BRIDGET (WALDEN HOUSTON)		35
THOMPSON, JUNE (GCOH)		27
ROBERTSON, SHIRLEY (TWCC-TRADITIONS)	2 nd	39
GRIFFIN, ANN (BENTWATER)		26
SHELTON, KRISTIN (KINGWOOD)		30
VONDRAK, CHARMELE (LAKE WINDCREST)	★	39
KENIGAN, DIANA (BENTWATER)		32
BIGGS, KATHERINE (GCOH)		32
*BERGMAN, BARBARA (TWCC-TRAD)		34



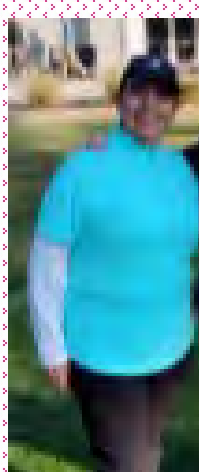
FLIGHT 5

STETSON, PAULA (WALDEN LAKE CONROE)	2 nd	37
EIV, CAROL (WALDEN LAKE HOUSTON)		32
THOMAS, BLYTHE (TWCC-TRADITIONS)		32
WATSON, JEANA (TWCC-TRADITIONS)		28
WOODALL, MARLENE (TWCC-TRADITIONS)		31
ADAMSON, LOUISE (TWCC-TRADITIONS)		22
DEVINE, PEGGY (WALDEN LAKE CONROE)	3 rd	36
MURILLO, DONNA (WILLOW CREEK)		32
RODDY, LAURIE (NORTHGATE)		25
ALEXANDER, CHEREE (KINGWOOD)		27
MULLARKEY, PJ (LAKE WINDCREST)	★ 1 st	38



FLIGHT 6

LANDIS, ELLEN (GCOH)		27
STEADHAM, DAVIS (WALDEN LAKE CONROE)		33
NELSON, DEBORAH (LAKE WINDCREST)		33
WILKINS, MARCIA (LAKE WINDCREST)		32
FOSTER, LINDA (TWCC-TRADITIONS)		30
HOWARD, PATTI (LAKE WINDCREST)	★ 1 st	39
O'DONNELL, DEBBIE (NORTHGATE)		32
BRADLEY, DEBORAH (KINGWOOD)	3 rd	35
GER, SHERRY (WALDEN LAKE HOUSTON)		31
SCHROEDER, JANET (KINGWOOD)	2 nd	39
KNOTT, JANICE (LAKE WINDCREST)		31



FLIGHT 1

CHANG, REBECCA (GCOH)		24
BOSMAN, MARGARET (TWCC)		27
CONKLIN, BETTY (DEERWOOD)	3 rd	33
DIETER, GINGER (DEERWOOD)		22
RUSSELL, RUTH ANN (BENTWATER)		32
DANCE, JADY (TWCC)		32
FAULKNER, CARRIE (KINGWOOD)	1 st	36
MOORE, DONNA (LAKE WINDCREST)	2 nd ★	34
LONDON, JANE (TWCC-TRADITIONS)		30
ILGES, LORETTA (DEERWOOD)		21
MCGRATH, RUBY (WILLOW CREEK)		33



FLIGHT 3

BUCHLER, KAREN (KINGWOOD)		32
JAMES, JODY (WALDEN LAKE HOUSTON)		26
STEWART, JERRY (BENTWATER)	1 st	39
HAMILTON, BRILINDA (GCOH)		33
BUTLER, SOY (BENTWATER)		29
LOOMIS, CAROL (BENTWATER)		32
DOMINIQUE, JOY (KINGWOOD)	2 nd	37
CAPRIO, SHERRI (LAKE WINDCREST)	★	36
HICKS, SHERRY (BENTWATER)		35
COUGHLIN, ANNE (DEERWOOD)		34

Our Pro Brett handed out three 1st place prizes, one 2nd place and one 3rd place for a total of 5 to our own ladies...that was 50% of the total team of 10 who played our first "at home" Interclub. Congratulations to the winners and thanks to all who signed up to play!

July sign up announcement will be forthcoming on July 11th for the next Interclub at Golf Club of Houston on July 25th.