

CITY OF ATLANTA

CONSTRUCTION PLANS OF PROPOSED

ANYARD - ATLANTA MEMORIAL PARK TRAIL

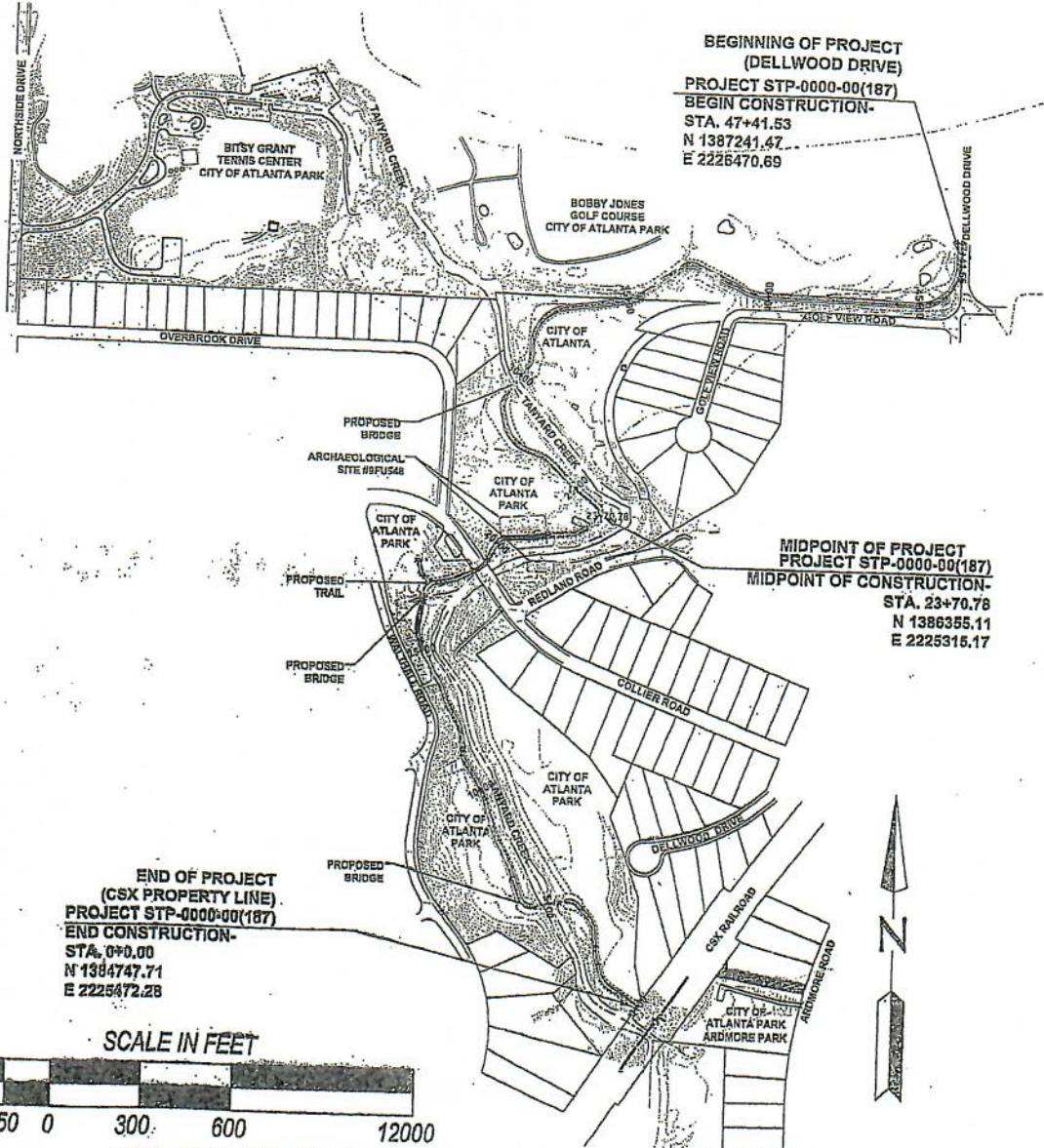
GA DOT PROJECT STP00-0000-00(187) FULTON COUNTY
 FEDERAL ROUTE N/A STATE ROUTE N/A P.I. # 00000187

TOTAL SITE AREA:
 0 ACRES
 TOTAL DISTURBED
 AREA: 4.0 ACRES
 TOTAL LENGTH
 OF PROJECT:
 1.44 L.F.
 (0.90 MI.)



BY
 CY
 required.

NOTED THEREBY,
 CONDITIONS AND ARE
 ATTENTION OF
 INS.
 NO. 17
 & 0146



END OF PROJECT
 (CSX PROPERTY LINE)
 PROJECT STP-0000-00(187)
 END CONSTRUCTION
 STA. 0+0.00
 N 1384747.71
 E 2225472.28

BEGINNING OF PROJECT
 (DELLWOOD DRIVE)
 PROJECT STP-0000-00(187)
 BEGIN CONSTRUCTION
 STA. 47+41.53
 N 1387241.47
 E 2226470.69

MIDPOINT OF PROJECT
 PROJECT STP-0000-00(187)
 MIDPOINT OF CONSTRUCTION
 STA. 23+70.78
 N 1386355.11
 E 2225315.17

NOTE: PROJECT DESIGNED AS AN URBAN TRAIL
 WITH A DESIGN SPEED OF 12 MPH.
 THIS PROJECT HAS BEEN DESIGNED TO COMPLY WITH TITLE II PROVISIONS OF THE
 AMERICANS WITH DISABILITIES ACT (ADA).

PLANS COMPLETED		DATE: 04-13-2009	SHEET NO.
DATE	REVISIONS		

CIVIL ENGINEER

CITY OF ATLANTA SEAL

ENGINEER

ENGINEER

OWNER: CITY OF ATLANTA
 DEPARTMENT OF PARKS
 RECREATION, & CULTURE
 675 PONCE DE LEON AVE
 8TH FLOOR
 ATLANTA, GEORGIA 30303

NOTE: ALL REFERENCES
 TO DOCUMENTS, DRAWINGS
 OR SPECIFICATIONS, TO "STATE
 DEPARTMENT", "GEORGIA
 DEPARTMENT" WHEN THE
 STATE OF GEORGIA MEANS, AND SH

SURVEY AND CONTROL
 HORIZ. DATUM-GA. STATE PL.
 VERT. DATUM-NAVD 1929
 COORDINATE ZONE-GEORGIA
 PROJECT UNITS-ENGLISH

Archeological Site Not
 located in the vicinity of
 the proposed trail. An
 Archeological Survey was
 conducted in June 2008. The site
 is located on Peachtree Creek.

No staging of equipment
 or materials shall be
 permitted within the
 Sensitive Archeological
 Area. Temporary protective
 measures shall be installed
 for the trail corridor to ensure
 construction. In addition,
 archaeological heritage
 resources shall be discussed
 with the Collier's Mill

Refer to the Layout and
 approximate limits of the
 project. PRIOR TO THE
 LAND-DEVELOPMENT
 SCHEDULE A PRECONSTRUCTION
 CONTROL INSPECTOR.
 THE ESCAPE OF SEDIMENT
 INSTALLING OF EROSION
 CONTROL MEASURES PRIOR TO
 EROSION CONTROL MEASURES
 IMPLEMENTATION OF
 EFFECTIVE EROSION CONTROL
 MEASURES TO PREVENT
 SEDIMENT SOURCE.

Per Article VII Riparian
 Atlanta code, an exemption
 associated secondary trail
 Development Plan. This
 requirements as outlined
 EPD Stream Bank Variance
 12-7-6(b)(15) File: BV-060-
 12/17/2008.

PORCTIONS OF THE PROPOSED
 HAZARD ZONE, AS PER FEMA

Portions of the property are
 located in Flood Hazard
 Rate Maps (FIRM) 13121C0234
 elevations for Tanyard Creek
 was completed to determine the
 floodplain impacts of the
 Creek Park Trail" last revised

SPECIFICATION NOTE: THIS
 Department of Transportation
 by the Federal Highway Ad

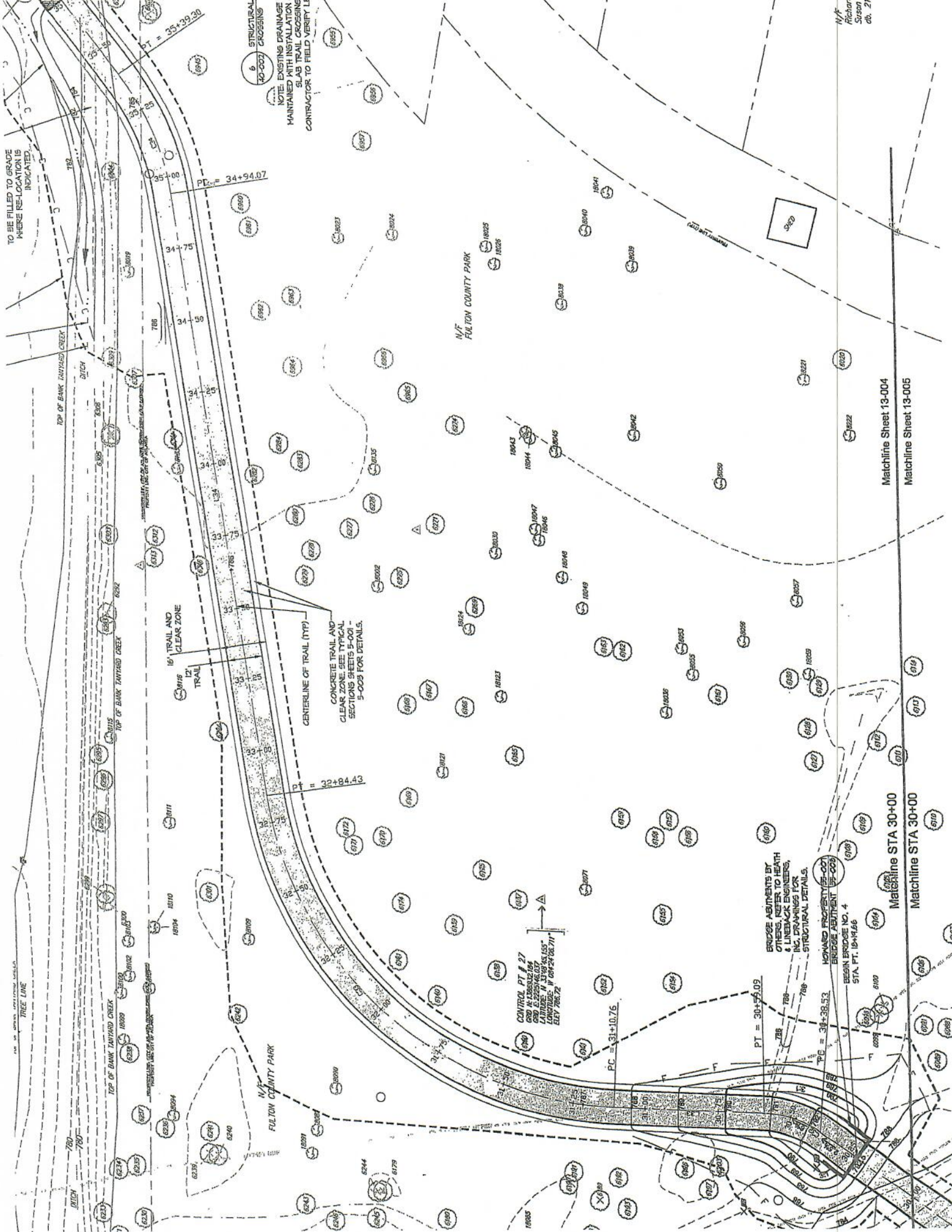
PLANS PREPARED BY: E
 RECOMMENDED FOR
 APPROVAL BY:

SUBMITTED BY:
 DATE 04-13-2009 CAPITAL

SIGNATURE:
 DEON FRANK
 BUREAU OF F
 55 TRINITY AV

DATE 04-13-2009 PRINCIPAL

PREPARED BY: E
 ECOS ENVIRO
 834 INMAN VIL
 ATLANTA, GA.



TO BE FILLED TO GRADE WHERE RE-LOCATION IS INDICATED

6 STRUCTURAL CROSSINGS
40-002
NOTE: EXISTING DRAINAGE MAINTAINED WITH INSTALLATION OF SLAB TRAIL CROSSING. CONTRACTOR TO FIELD VERIFY LE

16' TRAIL AND CLEAR ZONE
CENTERLINE OF TRAIL (TYP)
CONCRETE TRAIL AND CLEAR ZONE DETAIL SECTION SHEETS 5-001 TO 5-003 FOR DETAILS

CONTROL PT # 27
CRD. N = 1389432.164
CRD. E = 2275046.037
CRD. UTM = 18S 611000
LONGITUDE = 104 28 02.711
ELEV. 786.72

BRIDGE ABUTMENTS BY OTHERS, REFER TO HEATH & LINEBACK ENGINEERS, INC. DRAWINGS FOR STRUCTURAL DETAILS.
HOWARD PROPERTY (E-001)
BRIDGE ABUTMENT (E-001)
BEGIN BRIDGE NO. 4
STA. PT. 19+14.66

Matchline Sheet 13-004
Matchline Sheet 13-005

Matchline STA 30+00
Matchline STA 30+00

N.F. Richard Susan 1 ch. 21C

