

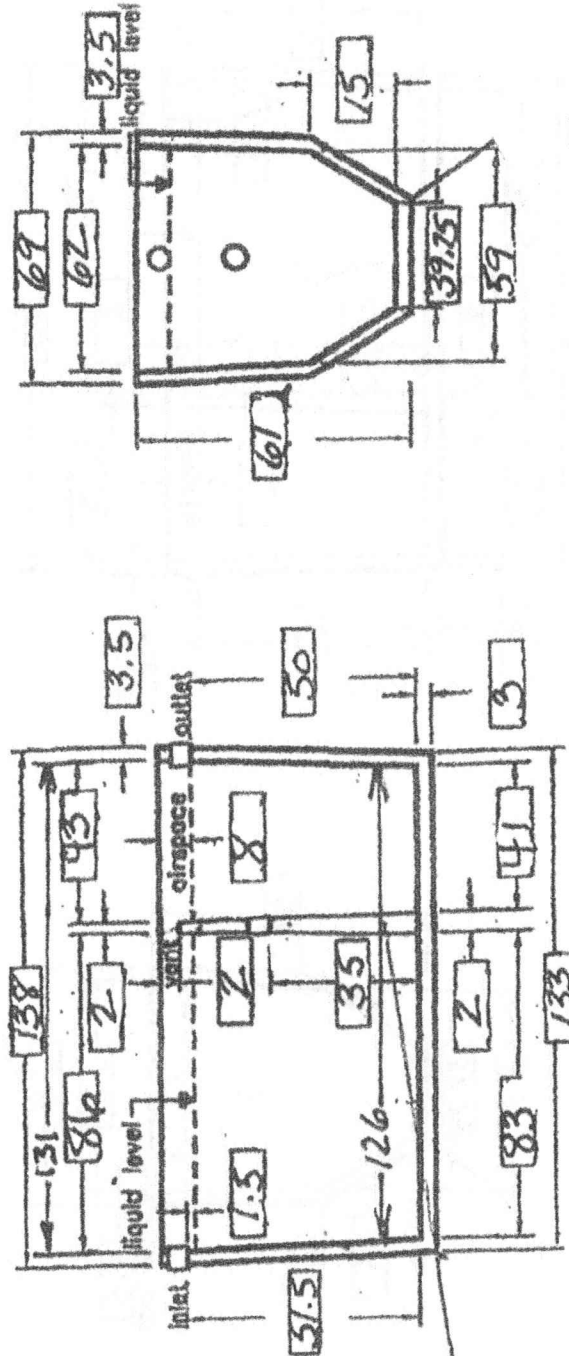
BAKER

SEPTIC & PRECAST

Since 1947

Tank Size: 1500 Gallon Dual Chamber
 Approval Number: 28-031-15D-C3
 Weight: 12,500-13,000lbs

Tank Size:
 Approval Number:
 Weight:



2" SLIDE
 IN BAFFLE

3/4" STEEL
 REBAR

