

# FOR LEASE: OFFICE

**910 Roberta Lane  
Sparks, NV 89431**

**4,240 SF Available**

## **PRICE**

**Starting at \$1.50 SF/MO  
Modified Gross Lease– 5 Year Term**

## **PROPERTY OVERVIEW**

**Office space conveniently located off McCarran Blvd. and Pyramid Way, on Roberta Lane, directly South of Sparks Mercantile Shopping Center, with easy access to both Interstate 80 and Interstate 580.**

**Highlighting one of several office spaces in this business park that offer inspiring designs and collaborative environments to include: Stand alone office building with ample parking. Bull Pen area for cubicles and private offices, ADA restrooms.**

**Zoning: Planned Development**



**Contact: Kimberly Clark**  
License #: B.0049252.CORP

**KimberRidge Commercial Real Estate**  
2295 S. Virginia Street, Ste. 16  
Reno, NV 89502  
Phone: 775-980-7232  
Email: kimberly@KCRENV.com



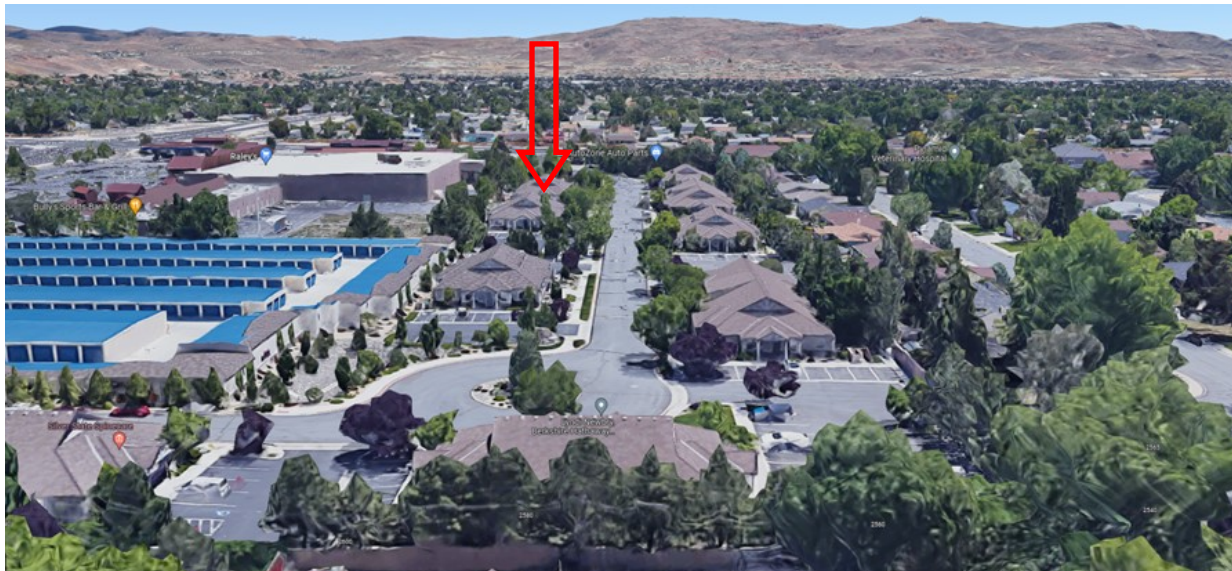


**Contact Info.:**  
**Kimberly Clark**  
License #: B.0049252.CORP  
Cell: 775-980-7232  
Kimberly@kcrenv.com

**Property Information:**  
910 Roberta Lane  
**AVAILABLE**  
4,240 SF

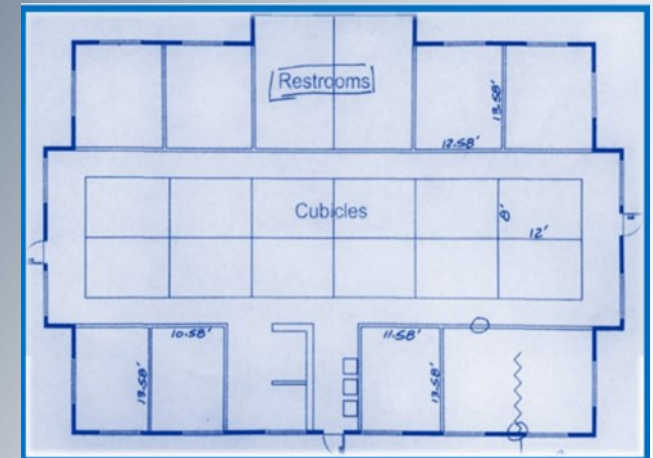
**PRICE:**  
\$1.50 per sf/MGR

**Area:**  
Medical office space conveniently located off McCarran Blvd. and Pyramid Way, on Roberta Lane, directly South of Sparks Mercantile Shopping Center, with easy access to both Interstate 80 and Interstate 580.



## LEASE DETAILS

910 Roberta Lane  
Sparks, NV 89431



The information furnished has been obtained from sources we deem reliable and is submitted subject to errors, omissions and changes. Although KimberRidge Commercial Real Estate has no reason to doubt its accuracy, we do not guarantee it. All information should be verified by the recipient prior to lease, purchase, exchange or execution of legal documents.

2295 S. Virginia Street, Ste. 16  
Reno, NV 89502  
775-823-3334

**KimberRidge**  
**COMMERCIAL REAL ESTATE**  
COMMERCIAL • RESIDENTIAL • PROPERTY MANAGEMENT • CONSTRUCTION