

FOR LEASE: EXECUTIVE SUITES

2295 S. Virginia Suite 16
Orchard Plaza

SF

Existing Office Spaces From 99 SF to 157 SF

PRICE

\$520.00 - \$725.00 per month

Features

- Beautiful Store Frontage Options
- Located in high traffic retail center
- Room for Expansion
- Onsite conference room and commercial print/copier/fax machine
- Center serviced by a traffic signal

Area

This is in an area of high traffic volume. Centrally located on South Virginia Street, near Plumb Lane intersection, in a strip center with Black Bear Dinner & El Pollo Loco. Just across Virginia Street, Park Lane Promenade coming soon.

Contact: Kimberly Clark

License #: B.0049252.CORP

KimberRidge Commercial Real Estate

2295 S. Virginia Street, Ste. 16

Reno, NV 89502

Phone: 775-980-7232

Email: kimberly@KCRENV.com



KimberRidge
COMMERCIAL REAL ESTATE
COMMERCIAL • RESIDENTIAL • PROPERTY MANAGEMENT • CONSTRUCTION

Kimberly Clark
775-980-7232
Kimberly@kcrenv.com

Property Information:
2295 S. Virginia St. Suite 16
Orchard Plaza-Executive Suites

AVAILABLE
Existing Office Spaces From 99 SF to
157 SF

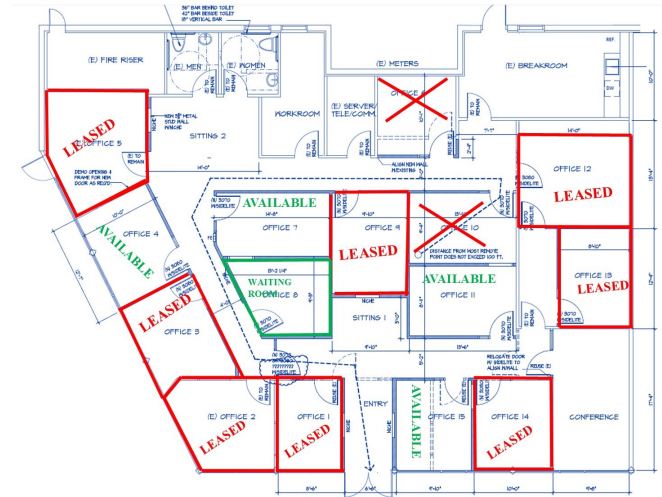
PRICE:
\$520.00 - \$725.00 per month

Area

Centrally located on S. Virginia near the Plumb Lane intersection; adjacent to Silver Wing residential development and the Park Lane Promenade coming soon. Flexible terms and improvement considerations.

LEASE DETAILS

2295 S. Virginia St. Suite 16
Orchard Plaza Executive Suites
\$520-725 per month



The information furnished has been obtained from sources we deem reliable and is submitted subject to errors, omissions and changes. Although KimberRidge Commercial Real Estate has no reason to doubt its accuracy, we do not guarantee it. All information should be verified by the recipient prior to lease, purchase, exchange or execution of legal documents.

2295 S. Virginia Street, Ste. 16
Reno, NV 89502
775-829-5900

