



FOR SALE: RETAIL/OFFICE

\$1,300,000.00

6340 Mae Anne Avenue,
Suites 1-2
Reno, NV 89523

Property Information

CONCRETE TILT UP

YEAR BUILT: 2005

ZONING: NC

PARCEL NO.: 200-600-09

BLDG SF: 6,130 SF

*Suite 2 Leased Through April 2024

PRICE

\$1,300,000.00

AREA

The center is located amidst a plethora of rooftops.
Traffic counts range from 6,000 to 15,000 vehicles per day.

The information furnished has been obtained from sources we deem reliable and is submitted subject to errors, omissions, and changes. Although KimberRidge Commercial Real Estate has no reason to doubt its accuracy, we do not guarantee it. All information should be verified by the recipient prior to lease, purchase, exchange, or execution of legal documents.

Contact: Bridgette Boswell
Agent's Nevada Lic. No.: S.0188041
Broker's Nevada Lic. No. B.0049252.CORP
KimberRidge Commercial Real Estate
2295 S. Virginia Street, Ste. 16
Reno, NV 89502
Phone: 775-823-3382
Email: bridgette@KCRENV.com

Contact Information:

Bridgette Boswell
NV Lic. No.: S.0188041
Direct: (775) 823-3382
Cell: (775) 686-4608
bridgette@kcrenv.com

Property Features:

- Excellent Parking
- Well Maintained Common Areas
- Shell Building Condition
- Zoned NC
- Suite 2 Leased Through April 2024

PRICE:

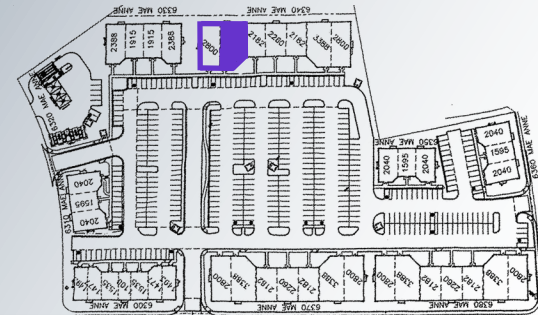
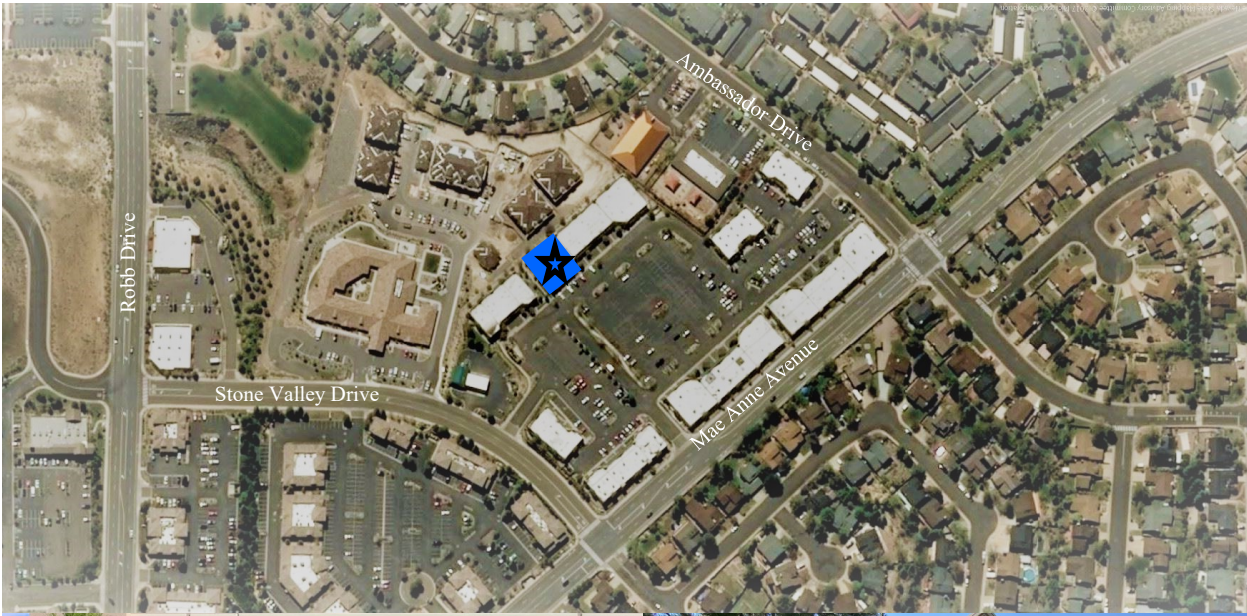
\$1,300,000.00

Area

The center is located amidst a plethora of rooftops. Traffic counts range from 6,000 to 15,000 vehicles per day.

Suite 2 Leased Through April of 2024

**6340 Mae Anne Avenue
Reno, Suites 1 & 2, NV 89523**



**KIMBERRIDGE COMMERCIAL
REAL ESTATE**
Broker's Nevada Lic. No. B.0049252.CORP
2295 S. Virginia Street, Ste. 16
Reno, NV 89502
775-823-3382

