

# TechDefcon Tx Introduction

---

# Introduction to TechDefcon Tx

## Global Presence

in UK, USA, Luxembourg, India, Australia, Singapore

500+

Professional Testers around the Globe

30+

Test Centers of Excellence / Managed Test labs / Test Factories established for various Clients

500+

Testing Engagements

100+

Physical

350+

Cloud Based Mobile Devices

Damco starts as a software development & testing company in USA & INDIA

Adds multiple service lines and incorporates in UK

Grows up to 200 employees and becomes ISO 9001 compliant

Damco incorporates in Luxembourg

Crosses 600 headcount and conforms to CMMi level 3

Established **TechDefcon Tx**, an Independent Testing Division

Damco growth spree continues and becomes 1500+ strong company with 5 ODCs

1996



2001



2003



2008



2009



2013



2017



# Our portfolio of end to end managed testing services

## Functional Testing



Manual Testing



Test Automation



Performance Testing



Security Testing



Usability Testing



Test Advisory Services

## Non Functional Testing

## Test Advisory

## Specialized



Digital Testing (Web & Mobile)



DevOps & Agile Testing



Mobile Testing



API/Web Services Testing



DW/Analytics Testing



Data Migration Testing



Test Data Management



Cloud Testing



Accessibility Testing



L10N & I18N Testing



ERP Testing



Compatibility Testing

# Key Industries serviced and some of Our Customers

**Banking & Finance**











**Insurance**









**Healthcare**








**ISV**






**Ecommerce & Retail**







**Travel & Hospitality**






**Education**







**Media & Publishing**







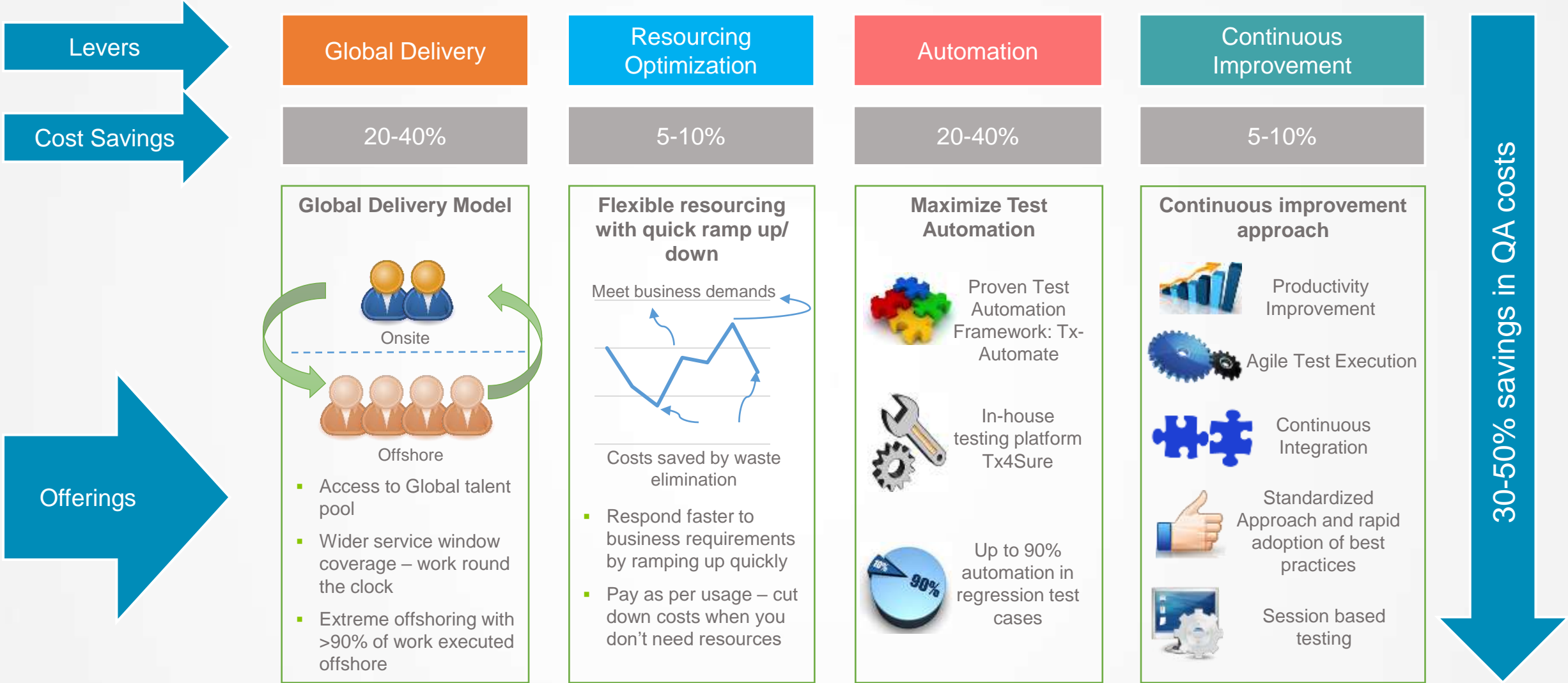
**Miscellaneous**








# TechDefcon Tx – Delivering best of QA services with significant cost benefits



# TechDefcon Tx's Approach to Increase Efficiency and deliver Value



## Account Management

Delivery manager and project manager will be assigned for tracking the quality and productivity of the work being delivered at **no additional cost**



## In-House Framework

Tx team will customize or create a new framework leveraging its in-house test automation framework TX-Automate



## Tools

TechDefcon Tx team will utilize the open source and in-house tools for the respective testing to be carried out across the application



## Templates & Checklists:

TechDefcon Tx will leverage its in-house test templates and checklists for testing



## Project Governance

Defined reporting and governance model with custom dashboards and KPIs



## Robust Testing Processes:

Leverage in-house process playbooks to define various testing processes



## QA Academy

A one stop solution for all applications related artefacts and can be used for all training and project related activities



## Resourcing Model

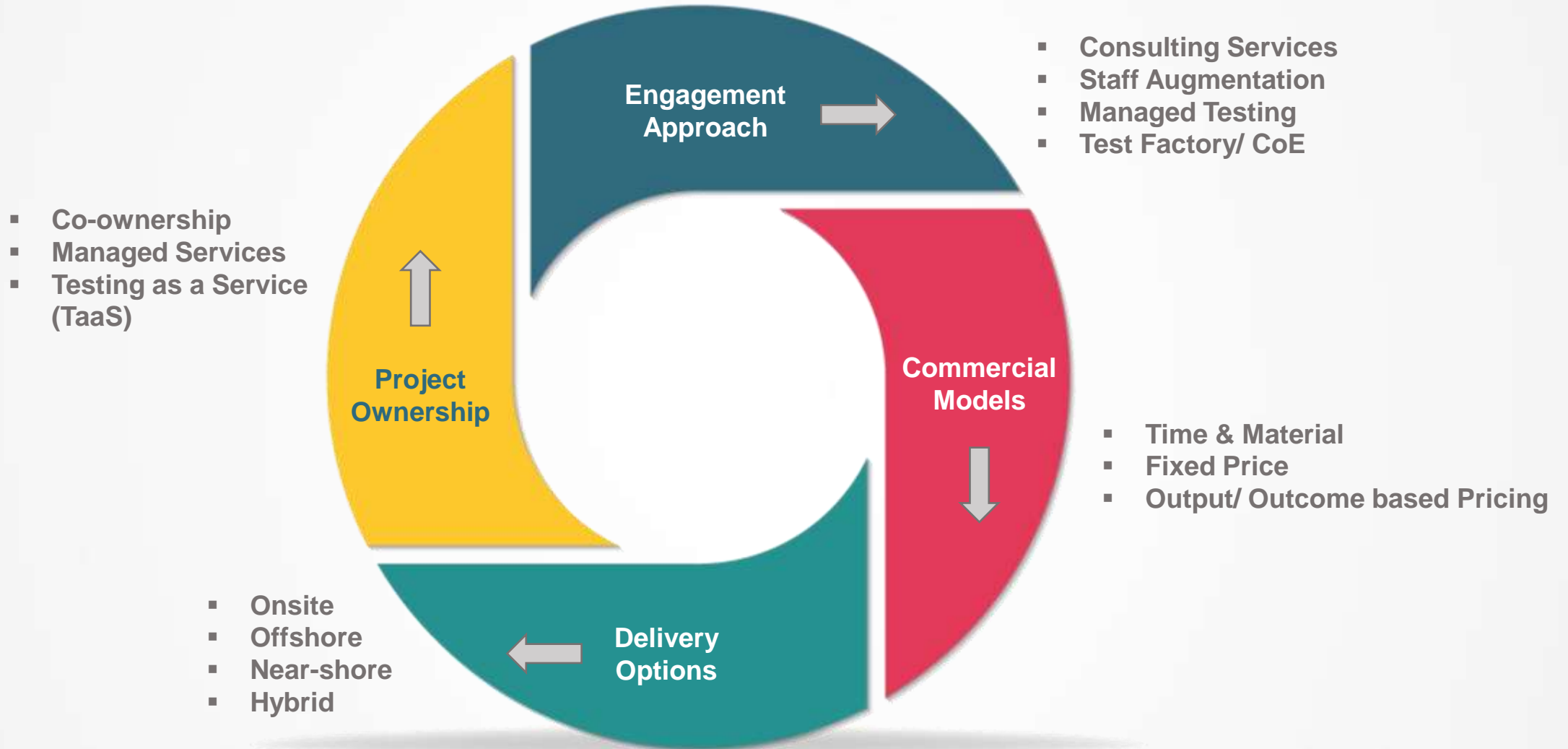
Core Flex resourcing model to address the fluctuating project demands



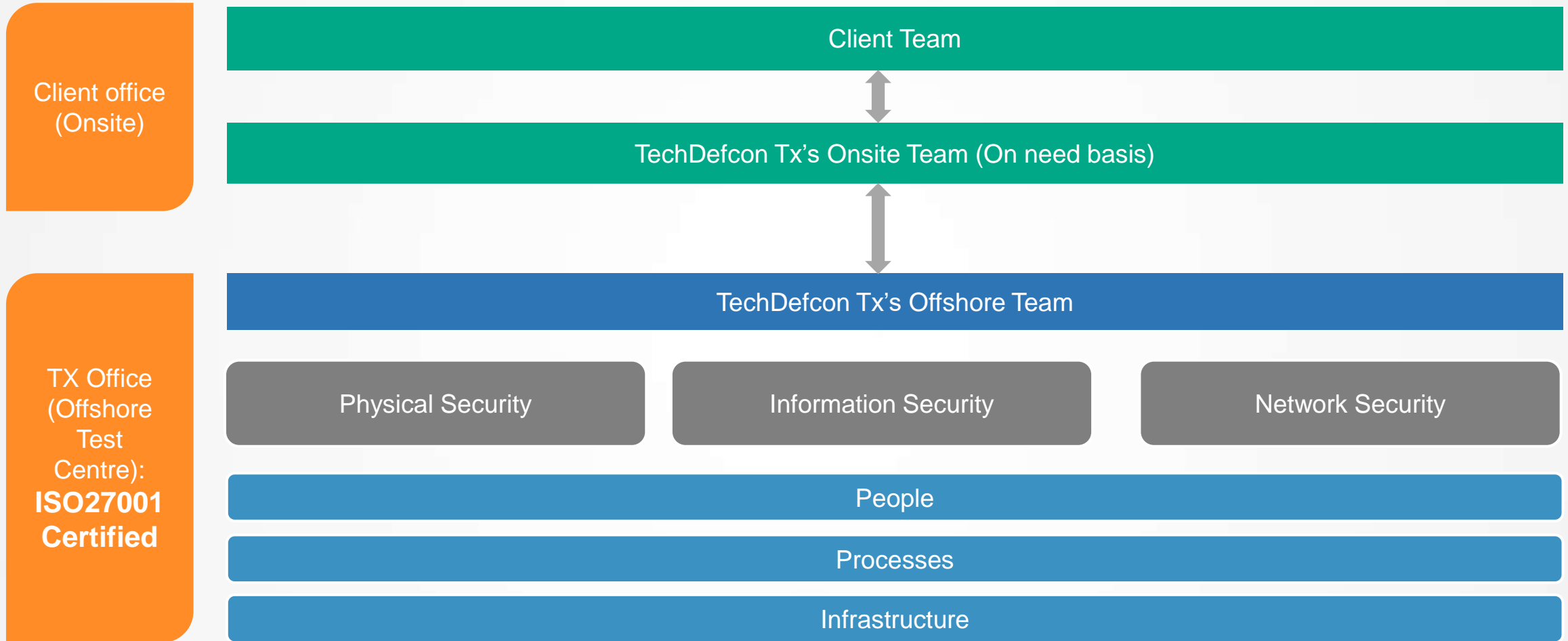
## Domain & Technology Experts

Right Pool of "Modern Testers" with continuous testing skills across test and process automation

# Flexible Engagement Models to suit your needs



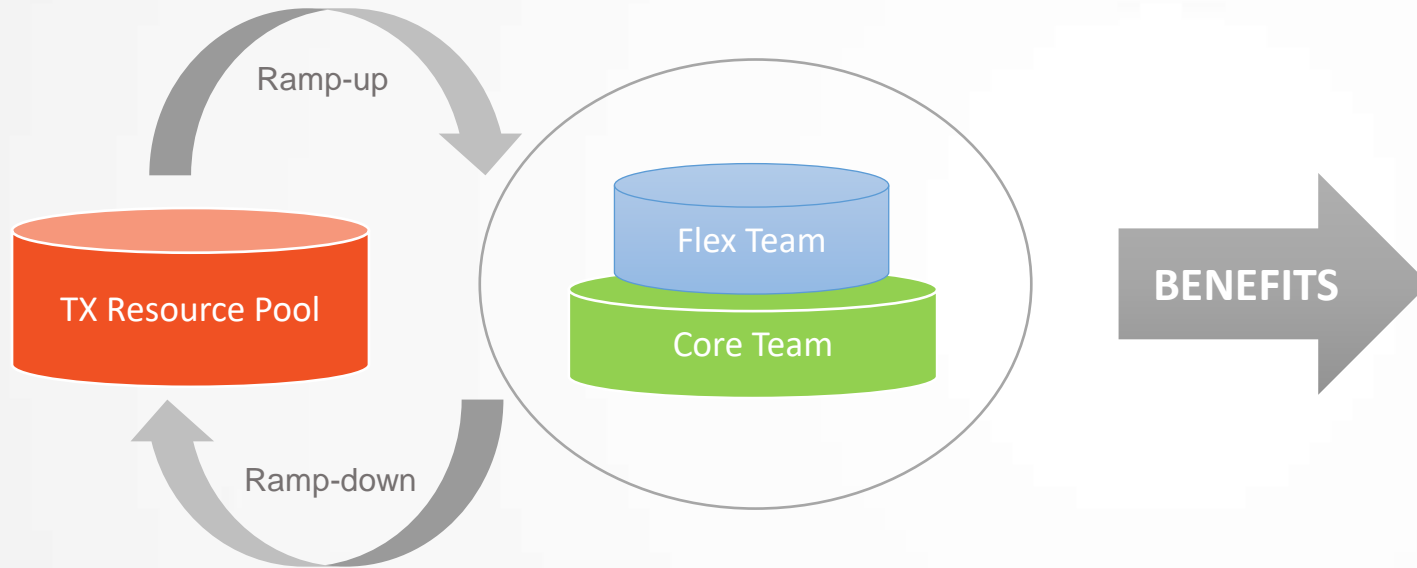
# Secured Offshore Test Centre





# Core Flex Resourcing Model

- **Core Team:** Dedicated team with experience in required domain will be working with Client for the entire engagement duration. Typically comprising for key roles like Project Manager, Test Leads and Business Analysts and will have the entire knowledge base for applications, processes and projects.
- **Flex Team:** Flexible resource pool of required skills to be added to the team based on business demands. Helps in quick ramp up/ ramp down of team.



## Core Team Knowledge Repository



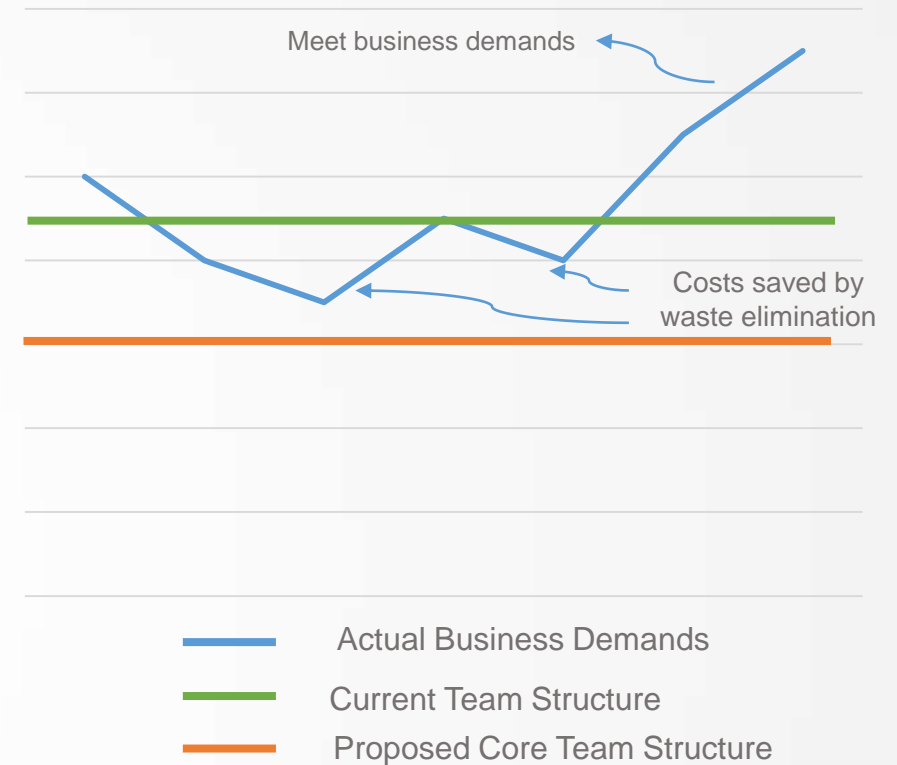
Central Repository



Common Tool & Infrastructure



Standard Process



We will align a core team of resources and ramp-up and ramp-down further on need basis to meet the ongoing business demands. This will help to cut down the cost and pay only as per usage.

# Benefits of TechDefcon Tx Partnership



## Specialist QA and Testing company

- Continuous Quality Improvement
- Institutionalized Best practices
- In-house Testing Platforms and Frameworks
- SLA based managed services



## Customer Centric

- Highly customer focused
- Adapt to customer processes
- Dedicated Account Management
- 'Go extra mile' approach



## Cost Reduction

- Global Delivery
- Resource optimization
- Tools & Automation
- Effective & Optimized test approach



## Agility & Flexibility

- Ready pool of technical and domain skilled resources
- Manage Peaks & troughs
- Scalable engagement
- Promptness



## Ease of doing business with us

- Effective communication
- Flexible business terms
- Ability to support globally
- Seamless knowledge transfer



## Faster Time to Market

- On time Delivery
- Agile & DevOps expertise
- Reduction in testing cycle
- Reusability & Automation

Thank You



**TechDefcon**

[www.techdefcon.com](http://www.techdefcon.com)

[sales@techdefcon.com](mailto:sales@techdefcon.com)