



Backwater Adventures A7

Three Chords and the Truth B16

On The Rocks A7

Nature Notes A8

Bollard Buddies B11

Issue 1037



The Island Moon

The voice of The Island since 1996

March 1, 2024

www.islandmoon.com

Full Color Version Available Online!

Weekly FREE

27° 37' 0.5952" N | 97° 13' 21.4068" W



Photo by Evelyn Pless-Shuberth



By Dale Rankin

We continue to wander through Daylight Wasting Time until 2 a.m. on Sunday, March 10 when Daylight Savings Time kicks in and we get our sunsets back. That is the weekend that Spring Break 2024 comes rolling in from OTB and we get the annual Spring Break Norther’ and Spring Break Speed Trap on Whitecap Boulevard. The good news is that we won’t have to zipper our way across the JFK Bridge once Spring Break hits as work there will be suspended and hopefully by then the water will return and things will get back to normal Around The Island. Remember that even during Spring Break what happens on The Island leaves on Sunday – that is unless they get stuck trying to zipper their way home over the JFK and then all bets are off.

Canals are open



Work began this week on the caps for the bulkheads east of the bridge.

It still seems to be sinking in but after twenty years of trying Island canals are now all interconnected and boatable. Islanders from all sides of our little sandbar already report better water in canals and anyone who has yet to take a boat tour through the new passageways is missing out. The City of Corpus Christi is holding a ribbon cutting for the opening of the canals at the Don Patricio Bridge at 10 a.m. on Thursday, March 7 and everyone is encouraged to attend. The *Packery Queen* will be on hand for the occasion. It’s a landmark in Island history and if nothing else a good excuse for an early Island Happy Hour! That is if we needed one...

Depth of Lake Padre

Like explorers venturing into the New World as Island boaters have begun making the passage under the new bridge into Lake Padre the question of depth in the lake has become front and center so we include soundings in this issue. Keep in mind that the private owners of the lake plan to build a marina there for ocean-going boats so keeping it deep enough for those types of vessels will be part of the plan going forward, but for lake depths now see the charts in this issue and we will have more in the next issue.

Vote early and vote often...

Don’t forget that Election Day is Tuesday and voting information is included in this issue. There has been a big turnout in Early Voting across the county and Islanders

Around cont. on A6

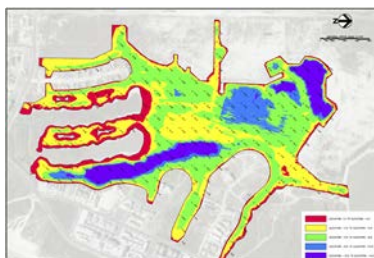
How deep is Lake Padre?

How deep is Packery Channel after dredging?

By Dale Rankin

With the recent completion of the dredging of Packery Channel and the opening of the channel under the Don Patricio Bridge boaters have taken to the water in recent weeks with varying anecdotal information on the depth of both. To get a full picture we referenced two separate but recent reports done on each after the dredging of Packery Channel and an unrelated report on Lake Padre prior to the opening of the channel. The

after-dredge report on Packery Channel was submitted to the City of Corpus Christi by Callen Marine who conducted the dredging, and the Lake Padre report was done by LJA Engineering for Diamond Beach Holdings, LLC. We include the graphics from both reports in this issue. In the older channel owned by the Padre Isles Property Owners Association south of Whitecap Boulevard officials from LJA Engineering sent the following message to the PIPOA board on Tuesday.



Full Size Images of the results on page 2 and 3 of this Issue.

“We have been monitoring the depth of the canals at the Whitecap and Gypsy Bridges since the canals were opened to identify

Lake Padre cont. on page A3

Vital Seagrasses in Gulf of Mexico Are Retreating Amid Rapid Sea Level Rise

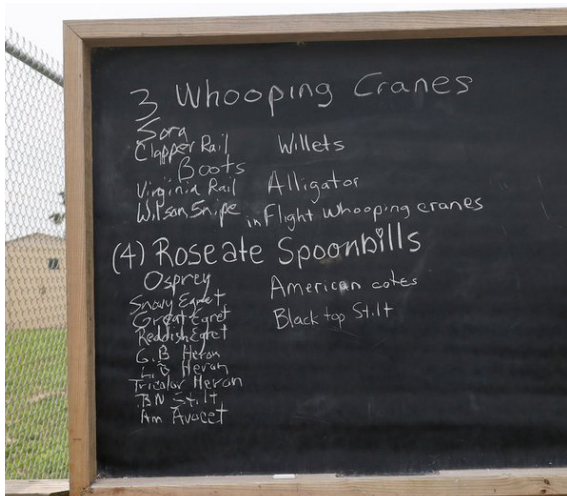


Study authors, Dr. Ken Dunton, Professor at The University of Texas Marine Science Institute (UTMSI) on the left and Kyle Capistrant-Fossa, a graduate student at (UTMSI) on the right sample for seagrasses in Corpus Christi Bay this February 2024.

Credit: Sophia Armada Tapia.

Editor’s note: The following comes from the The University of Texas at Austin Marine Science Institute in Port Aransas. The Gulf of Mexico is experiencing sea level rise two to three times faster than the global average due to a combination of warmer waters and wind circulation patterns. Now a newly released long-term study from marine scientists at The University of Texas at Austin has found rising sea levels can be linked to a loss of valuable seagrass habitats in

Sea Grass cont. on A3



Birds sighted at Port Aransas nature park.

By Debbie Noble



Thanks to First Community Bank for their generous donation to the Texas Seaside Center to help us continue the work we do! We cannot do it without our wonderful support team. Amanda Terry

A little Island history

Trouble in Brownsville, Sucking Mesquite Beans, and Drawing to a Bobtail Straight

By Dale Rankin

Editor’s note: This is the latest in our ongoing series of stories based on the book Taming the Nueces Strip written by Texas Ranger George Durham about his time with Texas Ranger Captain L.H. McNelly. Their ranger troop set out in 1875 to rid the section of Texas between the Nueces River and the Rio Grande of marauding bandits who had had recently looted downtown Corpus Christi. In the last issue the Rangers had fought a pitched



Juan Cortina

fight with a band of cattle rustlers in the Fight at Palo Alto killing sixteen of them and stacking their bodies in the town square to try and lure their compadres into town.

Brownsville, fall 1875.

McNelly’s decision to display the remains of the men killed at Palo Alto was not popular in Brownsville. The word around town was that the Rangers had ambushed a group of legitimate cattlemen on

History cont. on page A5

It’s time to vote!

Tuesday, March 5

Island Presbyterian Church

Election Day is Tuesday, March 5 for the Democrat and Republican Joint Election. Polls are open from 7 a.m. to 7 p.m. As of Monday a total of 527 ballots had been cast in Early Voting at the only Island voting location out of a total of 8512 registered voters on Padre Island. A total of 7091 ballots had been cast countywide. During Early Voting as well as on Election Day voters can cast ballots at any voting location in the county, they do not have to vote in the precinct where they are registered and may in either the Democrat or the Republican primary. However, in case of a runoff in either party voters can only vote in the runoff of the party which matches their first primary vote and cannot switch parties.

Convenient Election Day Voting sites for Island residents
ISLAND PRESBYTERIAN CHURCH
(Annex Building)
14030 Fortuna Bay Dr.
ETHEL EYERLY SENIOR CENTER
654 Graham Rd Flour Bluff
FLOUR BLUFF ISD TRANSPORTATION BUILDING
2510 Waldron Road (Maintenance/Transportation Lounge)
Flour Bluff
ELLIS MEMORIAL LIBRARY
700 W Ave A
Port Aransas

Vote cont. on A5

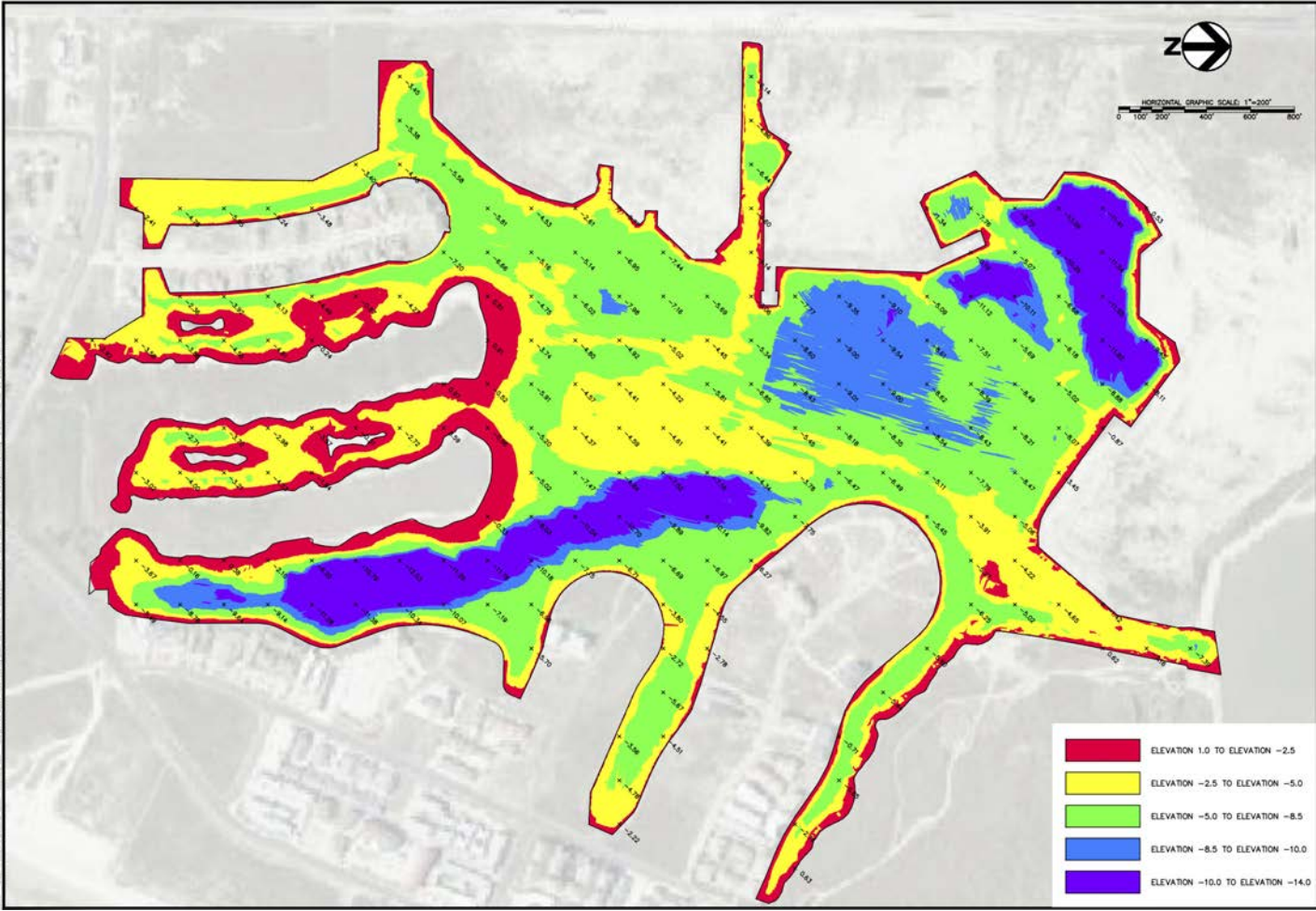
Ski Basin lawsuit

Long term public access to area undetermined

By Dale Rankin

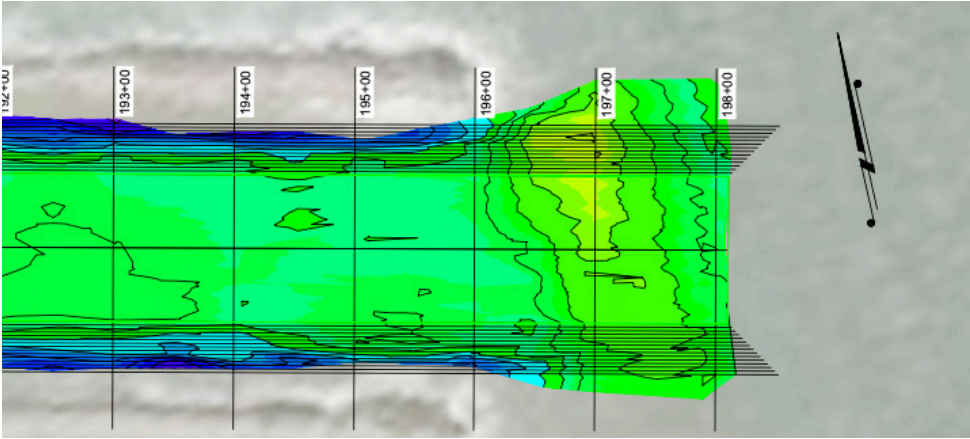
A week after the owners of the 634 acre tract of land around the Island Ski Basin filed suit against the organizer of the annual Ski Basin Bash to prevent the event from being held on the property in the future and seeking up to \$250,000 in damages the future of the event at the location and public access to the area are both uncertain. The suit filed by plaintiff Axys Capital Management, LLC against defendant Brent Wideman and his company BWide Entertainment claims officers from the private security firm of Global Security and Investigative Services were threatened by the crowd at the event on August 5, 2023 requests a permanent injunction which would prevent the hosting of events or “engaging in conduct which would constitute an unauthorized entry upon Plaintiff’s Property or causing or encouraging others to engage in conduct

Basin cont. on A5



Left: These are soundings taken just prior to the opening of the channel under the Don Patricio Bridge, noted here at the top-center of the page. At the left side of the image is Whitecap Boulevard and the fingertip at top left is Cane Harbor. At the far right lower corner is the entrance to Packery Channel, with Granada Drive in the lower center.

Below: This graphic shows the end of Packery Channel after the recent dredging project. The remainder of the channel – left of this image – is not included as it shows a depth consistent with the 14-15 foot depth shown here at the outer end of the channel. Of particular note is the absence of a sandbar at the opening of the channel and a hole indicated in yellow of about 25 feet in depth just outside the end of the north Packery Jetty.



Elevations Table			
Number	Minimum Elevation	Maximum Elevation	Color
1	-35.00	-34.00	
2	-34.00	-33.00	
3	-33.00	-32.00	
4	-32.00	-31.00	
5	-31.00	-30.00	
6	-30.00	-29.00	
7	-29.00	-28.00	
8	-28.00	-27.00	
9	-27.00	-26.00	
10	-26.00	-25.00	
11	-25.00	-24.00	
12	-24.00	-23.00	
13	-23.00	-22.00	
14	-22.00	-21.00	
15	-21.00	-20.00	
16	-20.00	-19.00	
17	-19.00	-18.00	

Elevations Table			
Number	Minimum Elevation	Maximum Elevation	Color
18	-18.00	-17.00	
19	-17.00	-16.00	
20	-16.00	-15.00	
21	-15.00	-14.00	
22	-14.00	-13.00	
23	-13.00	-12.00	
24	-12.00	-11.00	
25	-11.00	-10.00	
26	-10.00	-9.00	
27	-9.00	-8.00	
28	-8.00	-7.00	
29	-7.00	-6.00	
30	-6.00	-5.00	
31	-5.00	-4.00	
32	-4.00	-3.00	
33	-3.00	-2.00	

START the PARTY

REGISTER HERE!

VBS AT REAL LIFE

March 11-14th, 9-12pm Daily
Kindergarten-5th Grade

SPRING BREAK VBS!
Real Life Church @ Island in the Son 10650 SH 361 / 78418

SEASHORE CHARTER SCHOOLS

HOOKED ON EXCELLENCE

WHAT ARE WE?

- Public charter school
- We are a tuition free school
- Elementary and middle school campuses

APPLICATIONS OPEN MARCH 1

WHO DO WE SERVE?

- Grades K-8
- Students living on the Island, Flour Bluff, NAS, and Port Aransas

WHY SEASHORE SCHOOLS?

- Rigorous Academics
- GT Program
- After School Clubs
- Avg. 16:1 Class Sizes
- Project Based Learning
- Purple Star Campus (SLC)
- Clean & Safe Environment

- Competitive Athletic Programs
- STEM Focused curriculum and clubs
- Performing & Fine Arts
- National Junior Honor Society
- Courses for High School Credit
- Local School near the Beach

SCHEDULE A TOUR!

SEASHORE LEARNING CENTER: K-4 361-949-1222

SEASHORE MIDDLE ACADEMY: 5-8 361-654-1134

<https://seashorecharterschools.com>

SCAN ME

ELECT KRISTI BRITT
MARCH 5
THE PEOPLE'S D.A.

KRISTI 2024 BRITT

FOR NUECES COUNTY
DISTRICT ATTORNEY

TRUSTED, PROVEN TRIAL PROSECUTOR
HOLDS CRIMINALS ACCOUNTABLE
UPHOLDS THE RULE OF LAW
GIVES VICTIMS A VOICE

ELECTKRISTIBRITT.COM
EARLY VOTING FEB 20 - MARCH 1

A STRONG LEADER DEDICATED
TO PROTECTING THE CITIZENS OF NUECES COUNTY

POL. AD. PAID FOR BY THE KRISTI BRITT CAMPAIGN. PO BOX 3473, CORPUS CHRISTI, TEXAS 78403

Need a Handyman?

If you like our hardware stores, you'll love us in your home.

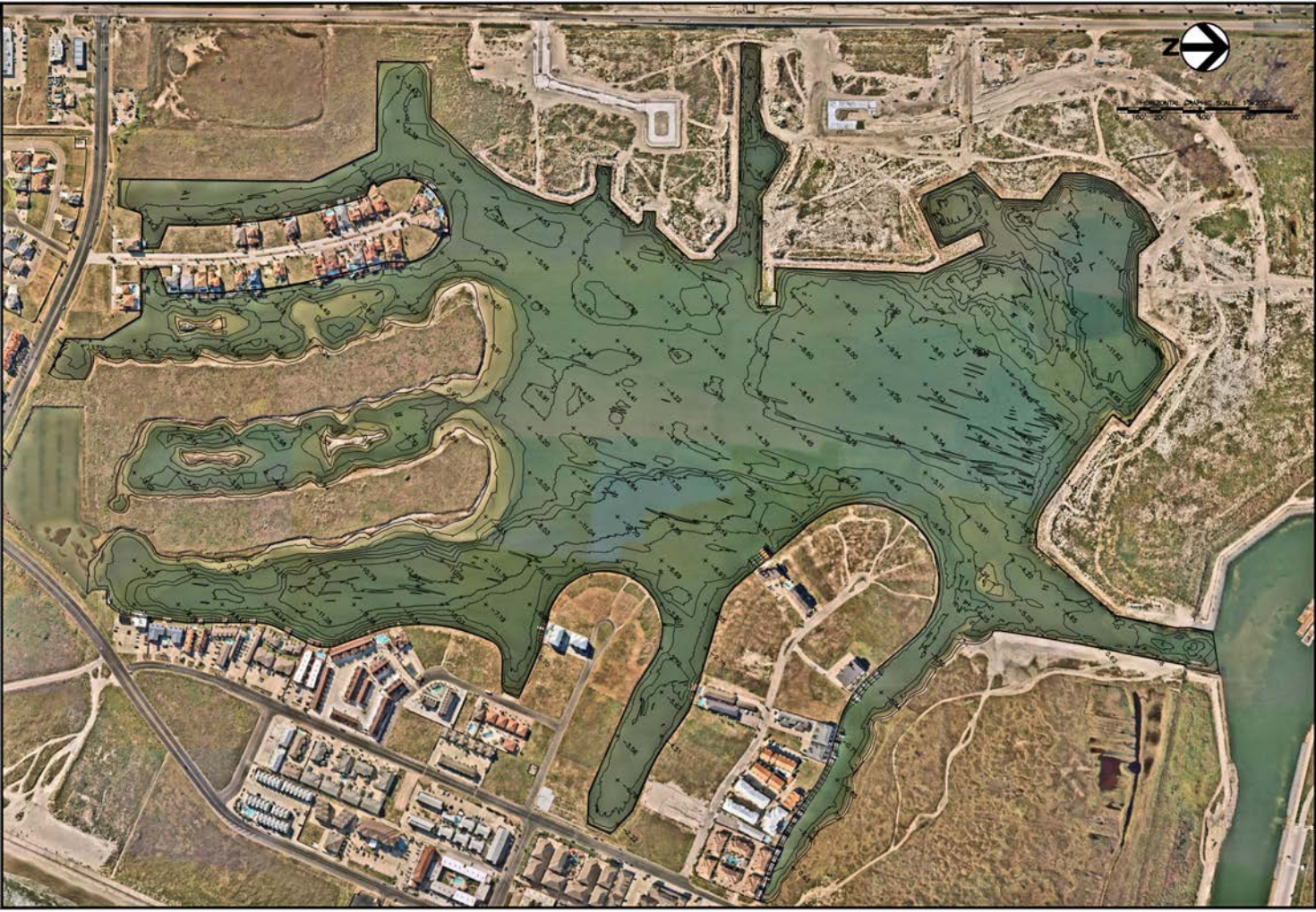
361.949.5030
AceHandymanServices.com

QUALIFIED
1,162 JOBS
TO PERFORM

CUSTOMER
★★★★★
RATED

ONE YEAR
GUARANTEE
ONE YEAR

©2023 Ace Handyman Services, Inc. All rights reserved.
Locally owned and independently operated Franchise.



Lake Padre cont. from A1

any potential scour occurring. In our observations we have found that minor scour 6"-12" occurred at only a few of the bridge corners during the first day of the opening as the velocities were higher while the water bodies equalized. Since then, no noticeable scour has occurred." The speed of water through the old channels south of Whitecap Boulevard since the opening of the connection under the Don Patricio Bridge has peaked at 2.5 feet per second, which is in keeping with the studies done prior to the opening.

What the boaters say

Tides have been exceptionally low in recent weeks so numbers will change as higher tides roll in and water movement through the new canals makes its presence felt. So far west of the Don Patricio Bridge boaters report a sandbar on the north side of the channel west of the bridge just prior to the three-way canal intersection leading to the new canals at Whitecap North Padre Island to the north, and southward toward the bridge at Whitecap Boulevard. So far anecdotal information from boaters traveling under the new bridge into Lake

Lake Padre Depths

Padre reports about six feet of water in the canal under the Don Patricio Bridge which is the design depth above the armored bottom. Boaters also report shallow water in several locations in Lake Padre, which coincides with the LJA Engineering study. The private owners of the Lake Padre property have said they plan to maintain the depth there at eight feet, which is also the maintenance depth of Packery Channel even as the recent dredge took the depth fourteen feet. Sand removal by land-based heavy machinery was done in recent weeks in the channel just east of the bridge. Additional dredging is planned for Lake Padre but so far no firm schedule has been announced. In Packery Channel two questions/observations have been common. First, boaters report a bar at a depth of under two feet at the turn in the channel just west of the entrance to Lake Padre running along the adjacent shoreline towards the SH 361 Packery Channel Bridge. As the report from Callen Marine indicates and confirmed by the City of Corpus Christi Director of Engineering Christi Jeff Edmonds that area is outside the footprint of the recent dredge. As reported last week

Mr. Edmonds' response to our inquiry is as follows: "The (dredge) plans called for a 50' channel width at the Lake Padre entrance. We had Callan Marine get as far into the Lake Padre entrance as they could with the dredge. We even explored getting a smaller dredge to extend the template further into the Lake Padre entrance but just the mobilization was \$125,000. I am hopeful that currents will help clear that Lake Padre entrance once all of the canal connections are made. It is clear, however, that greater attention is going to be required to address nuisance shoaling going forward." The second question from boaters, primarily as the recent dredge project was nearing completion was a lingering sandbar at about five feet of depth located in the mouth of the Packery Jetties on the Gulf of Mexico side. The bathometric study presented to the city and included in this issue indicates that sandbar is now gone, which has been confirmed by boaters in recent weeks, with the path from the channel to the gulf at fourteen feet of depth. If boaters have evidence to the contrary please submit it here and we will forward it to the city. For graphs from the recent studies see page 2 in this issue.

Hello Island Dog Lovers.

The Riley P Dog Park is now a reality, and some of you are already enjoying the benefits for you and your four- legged best friend. The park is located at the west end of Whitecap between the Yacht Club and Water Treatment Plant. Look for the cell tower and small building as a landmark. The dog park is toward the back of the property after you drive through the front gate. There is still more work to be done to improve and enhance the park. We are a 501c3 non- profit organization, so we rely entirely on private donations from Island residents as well as donations from corporate and business owners. In coming weeks we will be adding a double gate system at the entrance to the park and plan on dividing the area to segregate small and larger dogs. We also rely on volunteer Friends of the Riley P Dog Park to provide ongoing maintenance, and their help is greatly appreciated.

As more funds are raised, we plan to add features that will make this facility something we can be proud of. We welcome input from all residents as an important part of the process. Stay tuned for future updates. Barkingly Yours. Jed Blaich. Treasurer Riley P Dog Park.



Sea Grass cont. from A1

Texas. The paper appears in [Communications Earth & Environment](#). Seagrasses are recognized globally as a foundation species that play a key role in supporting fisheries and mitigating climate change, efficiently storing substantial amounts of carbon. Meadows occur in shallow waters, and the species are dependent on light for photosynthesis and growth. The researchers are the first to find that sea level rise is yet another human impact that is responsible for the worldwide decline in seagrasses. Ken Dunton, a professor in UT's Marine Science Institute, and Kyle Capistrant-Fossa, a doctoral student, made the discovery while examining a 30-year database of observations that Dunton had collected at his study site in the Laguna Madre. Capistrant-Fossa found that the slow loss of vegetation at the site over the last decade was also coincident with an unprecedented rise in sea level. They also found that

seagrasses were disappearing from their historical deeper water ranges throughout the Upper Laguna Madre. But they noted that these losses could be compensated by plant expansion into areas that were once too shallow. "We were surprised to see that under all sea level rise scenarios, newly flooded land was greater than lost habitat," Capistrant-Fossa said. "The study emphasizes the importance of long-term multi-decadal studies that capture the often slow and insidious effects of climate change on some of our most valued ecological systems." Although areas in the Texas Gulf Coast provide seagrasses space for expansion, the authors noted that globally seagrass expansion into shallow waters is likely more limited, because of artificial hardening of shorelines. Ensuring suitable space for seagrass colonization in coastal areas, by limiting construction, for example, may prove increasingly important as sea levels

rise around the world, the scientists said. Seagrasses have received attention in recent years as a tool for climate change mitigation because they offer a low-risk, nature-based solution to help offset carbon emissions and reduce the effects of global warming. Dunton and UT professor of mechanical engineering Preston Wilson are currently working to develop a way of tracking marine carbon dioxide removal in seagrass meadows. If effective, their efforts could help countries and regions effectively measure the impact of large-scale seagrass meadow remediation projects on removing carbon dioxide from the atmosphere. The research was supported by the National Park Service, the Coastal Bend Bays & Estuaries Program and the Texas Coastal Management Program as administered by the Texas General Land Office under the National Oceanic and Atmospheric Administration (NOAA).

Moon Monkeys

Mike Ellis, Founder



Editor/Publisher

Dale Rankin

Co-Publisher, Business Ops

Jan Park Rankin

Classifieds

Arlene Ritley

Design and Production

Augs

Business and Feature Writers

Mary Craft

Reverend Dr. Ken Ritchie

Dr. Tom Dorrell

Joey Farah

Emily Gaines

Jay "Boat Surgeon" Gardner

Todd Hunter

Dotson Lewis

Ronnie Narmour

Dr. Ed Proffitt

Andy Purvis

Celeste Silling

Photographers

Miles Lewis (Emeritus)

Debbie Noble

Evelyn Pless-Schuberth

Delivery

Paul Nowicki

Office Security/Spillage Control (Emeritus)

Riley P. Dog



About the Island Moon

The Island Moon is published every Thursday; Dale Rankin, Editor / Publisher.

Total circulation is 10,000 copies. Free distribution of 6,000 copies in over 50 Padre Island businesses and condos, as well as 600 copies distributed in Flour Bluff, 1,400 copies on Mustang Island and Port Aransas businesses.

News articles, photos, display ads, classified ads, payments, etc. may be left at the Moon Office.

The Island Moon Newspaper

14646 Compass, Suite 4

Corpus Christi, TX 78418

361-949-7700

editor@islandmoon.com

Facebook: The Island Moon Newspaper

Where to Find The Island Moon

Port Aransas	All Stripes Stores
Pioneer RV	Black Sheep/ Barrel
Stripes on 1A	CVS
Kody's	Dollar General
Coffee Waves	Doc's Restaurant
Moby Dicks	Snoopy's Pier
IGA	Isle Mail N More
Treasure Island	Island Italian
San Juan's Restaurant	Brooklyn Pie Co.
Wash Tub	Ace Hardware
Shorty's Place	Texas Star (Shell)
Gratitude	Spanky's
The Gaff	Scuttlebutt's
Red's Riviera	Restaurant
Sounds Good BBQ	Subway
Spanky's Liquor	Island Tire
Beach Lodge	Padre Pizzeria
Ellis Memorial Library	And all Moon retail advertisers
Bernie's Beach House	WB Liquor
Flour Bluff	Island IGA
H.E.B.	Island Fitness
Ethyl Everly Senior Center	My Coastal Home
North Padre	

PENN THOMAS, P.C.

CPA FIRM

PENN THOMAS, CPA
penn@pennthomascpa.com



UPTOWN OFFICE	ISLAND OFFICE
711 N. CARANCAHUA, SUITE 1818	14633 S.P.I.D. CORPUS CHRISTI, TX 78418
TEL: (361) 884-6346	TEL: (361) 949-7890
FAX: (361) 887-1931	FAX: (361) 887-1931

Senior Moments Special to The Island Moon

By Dotson Lewis

Samuel Longhorne Clemens

Writer Part 3

Dotson's Note: Twain was an early proponent of fingerprinting as a forensic technique, featuring it in a tall tale in Life on the Mississippi (1883) and as a central plot element in the novel Pudd'nhead Wilson (1894). Twain's novel A Connecticut Yankee in King Arthur's Court (1889) features a time traveler from the contemporary U.S., using his knowledge of science to introduce modern technology to Arthurian England. This type of historical manipulation became a trope of speculative fiction as alternate histories. In 1909, Thomas Edison visited Twain at Stormfield, his home in Redding, Connecticut and filmed him. Part of the footage was used in The Prince and the Pauper (1909), a two-reel short film. It is the only known existing film footage of Twain. Thanks to my mother, Golda E. Clark Lewis, William Faulkner, and Wikipedia, for the facts contained in this report and to my mother for the photos.



Twain made a substantial amount of money through his writing, but he lost a great deal through investments. He invested mostly in new inventions and technology, particularly the Paige typesetting machine. It was considered a mechanical marvel that amazed viewers when it worked, but it was prone to breakdowns. Twain spent \$300,000 (equivalent to \$9,097,241 in 2022) on it between 1880 and 1894, but before it could be perfected it was rendered obsolete by the Linotype. He lost the bulk of his book profits, as well as a substantial portion of his wife's inheritance.

Twain also lost money through his publishing house, Charles L. Webster and Company, which enjoyed initial success selling the memoirs of Ulysses S. Grant but failed soon afterward, losing money on a biography of Pope Leo XIII. Fewer than 200 copies were sold.

Twain and his family closed down their expensive Hartford home in response to the dwindling income and moved to Europe in June 1891. William M. Laffan of *The New York Sun* and the McClure Newspaper Syndicate offered him the publication of a series of six European letters. Twain, Olivia, and their daughter Susy were all faced with health problems, and they believed that it would be of benefit to visit



Twain's writings and lectures enabled him to recover financially, combined with the help of his friend Henry Huttleston Rogers. In 1893, he began a friendship with the financier, a principal of Standard Oil, that lasted the remainder of his life. Rogers first made him file for bankruptcy in April 1894, then had him transfer the copyrights on his unwritten works to his wife to prevent creditors from gaining possession of them. Finally, Rogers took absolute charge of Twain's money until all his creditors were paid.

Twain accepted an offer from Robert Sparrow Smythe and embarked on a year-long around-the-world lecture tour in July 1895 to pay off his creditors in full, although he was no longer under any legal obligation to do so. It was a long, arduous journey, and he was sick much of the time, mostly from a cold and a carbuncle. The first part of the itinerary took him across northern America to British Columbia, Canada, until the second half of August. For the second part, he sailed across the Pacific Ocean. His scheduled lecture in Honolulu, Hawaii, had to be canceled due to a cholera epidemic. Twain went on to Fiji, Australia, New Zealand, Sri Lanka, India, Mauritius, and South Africa. His three months in India became the centerpiece of his 712-page book *Following the Equator*. In the second half of July 1896, he sailed back to England, completing his circumnavigation of the world begun 14 months before.



Twain and his family spent four more years in Europe, mainly in England and Austria (October 1897 to May 1899), with longer spells in London and Vienna. Clara had wished to study the piano under Theodor Leschetizky in Vienna. However, Jean's health did not benefit from consulting with specialists in Vienna, the «City of Doctors». The family moved to London in spring 1899, following a lead by Poultney Bigelow, who had a good experience being treated by Dr. Jonas Henrik Kellgren, a Swedish osteopathic practitioner in Belgravia. They were persuaded to spend the summer at Kellgren's sanatorium by the lake in the Swedish village of Sanna. Coming back in fall, they continued the treatment in London, until Twain was convinced by lengthy inquiries in America that similar osteopathic expertise was available there.

In mid-1900, he was the guest of newspaper proprietor Hugh Gilzean-Reid at Dollis Hill House, located on the north side of London. Twain wrote that he had "never seen any place that was so satisfactorily situated, with its noble trees and stretch of country, and everything that went to make life delightful, and all within a biscuit's throw of the metropolis of the world." He then returned to America in October 1900, having earned enough to pay off his debts. In winter 1900/01, he became his country's most prominent opponent of imperialism, raising the issue in his speeches, interviews, and writings. In January 1901, he began serving as vice-president of the Anti-Imperialist League of New York.



Dotson's Other Note: Above, plaque on Sydney Writers Walk commemorating the visit of Twain in 1895. Twain was in great demand as a featured speaker, performing solo humorous talks similar to modern stand-up comedy. He gave paid talks to many men's clubs, including the Authors' Club, Beefsteak Club, Vagabonds, White Friars, and Monday Evening Club of Hartford. FOR YOUR INFORMATION: The weekly Veterans Round Table meetings are on Thursdays 9-11AM. All veterans, their families and anyone interested in veterans' activities, are invited. The meeting location is at Del Mar College, Center for Economic Development, 3209 S. Staples. (Across from Ray High School). Also, the Veterans Radio Round Table is on the air on KEYS AM 1440 & 98.7 FM, 8-10 a.m., Saturdays. Please listen and call in or text. The listener/text line is: 361-882-5397. It's your two hours; please let us hear from you.

TO BE CONTINUED



Stuff I Heard on the Island

By Dale Rankin

Ballots for the current election of officers for the Padre Isles Property Owners Association have begun arriving in Island mailboxes and contain the following language for approval by voters:

"Owners of single-family residential lots may lease the entire residence and lot, provided each lease shall be in writing, and is for a minimum duration of 30 consecutive days. Owners of residences designated as a condominium or a townhouse may lease their residence for less than 30 consecutive days if permitted by any applicable condominium or townhouse regime and zoning laws." What that means and whether Island homeowners should vote for or against has been the subject inquiries here, so let's take the first part of that question first.

What it means...

As reported previously in this space there is a move in Austin for the state to strip cities of the power to regulate Short-Term Rental (STR) properties which if successful would mean the current city prohibition on STR in Island residential neighborhoods zoned RS-6 would be removed opening the floodgates for Island neighborhoods to become horizontal hotels overnight. Let's start with where we are.

Section 2:05 of the PIPOA bylaws reads in part as follows:

MANAGEMENT. The affairs and property of the Association shall be managed and controlled by the Board. The Board shall have the authority to cause the Association to own, acquire, develop, construct, maintain operate, repair and replace, on a non-profit basis, common areas for the protection, security, pleasure, recreation; or benefit of the Subdivision and the owners thereof...and they are expressly given full powers not inconsistent with these bylaws, the Articles of Incorporation of this Association, applicable provisions of law and the Protective Covenants and landowners' Agreements covering the Subdivisions to accomplish such purposes, including the power to acquire, purchase or lease any such facilities or transfer the management responsibilities for any such facilities to others in order to provide for the maximum enjoyment of such facilities by the members and such other designated persons.

The most important part of that is *expressly given full powers not inconsistent with these bylaws, the Articles of Incorporation of this Association, applicable provisions of law and the Protective Covenants and landowners' Agreements covering the Subdivisions*. While it has not been tested in court that language appears to give the PIPOA management the power to enforce the protective covenants of the 32 separate and semi-sovereign subdivisions that make up the umbrella organization we know as the PIPOA as those covenants now read. If the city were stripped of the power to regulate STR then those covenants as enforced by the PIPOA, with the underlying option of legal action by individual homeowners, would be the last defense for Island homeowners against STR in residentially zoned neighborhoods.

The current language in the protective covenants of most Island subdivisions reads as follows:

No commercial, trade or business activity of any nature shall be carried on upon any lot, nor shall anything be done thereon which may become an annoyance or nuisance to the neighborhood.

Does that specifically ban STR? If they fall under the definition of "commercial, trade, or business activity" yes. If a court finds otherwise no. So the idea behind the language on the PIPOA ballot is to insert it into the covenants of the 32 subdivisions to make it more difficult for anyone challenging the covenants in court.

Should we vote for it?

It is just my opinion but the short answer is an emphatic yes. It is important to note that none of this effects in any way the operation of STR that are already in place and any future STR that are zoned anything other than RS-6; that is why it is worded the way that it is. Specific wording in case of trouble is better than the current "commercial, trade, or business activity."

A long process...

It is important to note here that even if the proposed item on this ballot is approved by 51 percent of the voters Island-wide in this election it only becomes part of the covenants in each of the separate subdivisions with a vote of 51 percent of the *property owners in each of those subdivisions*; not 51 percent of *those voting* but 51 percent of the total number of *property owners* in each of the individual subdivisions. The voting system being used in this PIPOA election can in fact track voting by subdivision but even so the likelihood of 51 percent of *all property owners* in *all of the subdivisions* on The Island voting in favor of it in this round of balloting is extremely small – remote – nearly impossible – given the historic number of the total number of property owners Island wide who vote. Think of this round of voting as a plebiscite that is only binding across The Island if 51 percent of the homeowners in each and every one of the 32 subdivisions vote in favor, but it does give the PIPOA management the right to move toward enforcement going forward with the expressed backing of its membership with the hope that the language on this ballot if approved can be inserted into the covenants of each of the 32 subdivision in the future. This vote is not the end of the process but it is a good start. If this language is approved by voters the next step will be going house by house in each of the individual subdivisions to get notarized signatures from 51 percent of their homeowners to place it into their covenants. Since the votes in this round of balloting can be tracked by subdivision the number of signatures of homeowners to get to 51 percent in each will be known at the start of the next phase of the work. We will cross that bridge when we come to it, but first we need the wording to place into the covenants and that wording is what is on this ballot.

It's time to vote.



Congratulations to Bailee (pictured above) and Garrett Koch on the purchase of Isle Mail & More and The Port Aransas Business Center. Bailee, a long time employee purchased the two businesses from Scott and Andrea Ford. The Ford's who opened the Port Aransas business center in 2008 and bought Isle Mail & More in 2014 have decided to retire. Bailee has big plans to expand inventory and services at the Padre Island location. We wish her and her husband all the best.

NO JOB TOO SMALL...NO JOB TOO BIG

& LARRY ALLEN

CONCRETE CONSTRUCTION

WE BUILD

RETAINING WALLS

(361) 251-3469

(830) 460-1173

LARRYALLENCONCRETE@YAHOO.COM

Sports

Sports Talk Special to The Island Moon

Sugar Ray Robinson-Boxer

Part 4



By Dotson Lewis

Dotson's Note: Robinson knocked out Bob Young in the second round in Boston in his only fight in 1959. A year later, he defended his title against Paul Pender. Robinson entered the fight as a 5-1 favorite, but lost a split decision in front of 10,608 at Boston Garden. The day before the fight Pender commented that he planned to start slowly, before coming on late. He did just that and outlasted the aging Robinson, who, despite opening a cut over Pender's eye in the eighth round, was largely ineffective in the later rounds. Thanks to Bill Morgan, Joseph C. Nichols, Bert Sugar, and Lou Jenkins for the facts contained in this report and to Lou Jenkins for the photos.



Robinson-1966

An attempt to regain the crown for an unheard of sixth time proved beyond Robinson. Despite Ray's efforts, Pender won by decision in that rematch. On December 3 of that year, Robinson and Fullmer fought a 15-round draw for the WBA middleweight title, which Fullmer retained. In 1961, Robinson and Fullmer fought for a fourth time, with Fullmer retaining the WBA middleweight title by a unanimous decision. The fight would be Robinson's last title bout.

Robinson spent the rest of the 1960s fighting 10-round contests. In October 1961 Robinson defeated future world champion Denny Moyer by a unanimous decision. A 12-5 favorite, the 41-year-old Robinson defeated the 22-year-old Moyer by staying on the outside, rather than engaging him. In their rematch four months later, Moyer defeated Robinson on points, as he pressed the action and made Robinson back up throughout the fight. Moyer won 7-3 on all three judges' scorecards. Robinson lost twice more in 1962, before winning six consecutive fights against mostly lesser opposition. In February 1963 Robinson lost by a unanimous decision to former world champion and fellow Hall of Famer Joey Giardello.

Giardello knocked Robinson down in the fourth round, and the 43-year-old took until the count of nine to rise to his feet. Robinson was also nearly knocked down in the sixth round, but was saved by the bell. He rallied in the seventh and eight rounds, before struggling in the final two. He then embarked on an 18-month boxing tour of Europe.

Robinson's second no-contest bout came in September 1965 in Norfolk, Virginia in a match with an opponent who turned out to be an impostor. Boxer Neil Morrison, at the time a fugitive and accused robber, signed up for the fight as Bill Henderson, a capable club fighter. The fight was a fiasco, with Morrison being knocked down twice in the first round and once in the second before the disgusted referee, who said "Henderson put up no fight", walked out of the ring. Robinson was initially given a TKO in 1:20 of the second round after the "obviously frightened" Morrison laid himself down on the canvas. Robinson fought for the final time in November 1965. He lost by a unanimous decision to Joey Archer. Famed sports author Pete Hamill mentioned that one of the saddest experiences of his life was watching Robinson lose to Archer. He was even knocked down and Hamill pointed out that Archer had no knockout punch at all; Archer admitted afterward that it was only the second time he had knocked an opponent down in his career. The crowd of 9,023 at the Civic Arena in Pittsburgh gave Robinson several standing ovations, even while he was being thoroughly outperformed by Archer.

On November 11, 1965, Robinson announced his retirement from boxing, saying: "I hate to go too long campaigning for another chance." Robinson retired from boxing with a record of 174-19-6 (2

no contests) with 109 knockouts in 201 professional bouts, ranking him among the all-time leaders in knockouts.



Robinson on Land of the Giants in 1969

In his autobiography, Robinson states that by 1965 he was broke, having spent all of the \$4 million in earnings he made inside and out of the ring during his career. A month after his last fight, Robinson was honored with a Sugar Ray Robinson Night on December 10, 1965, in New York's Madison Square Garden. During the ceremony, he was honored with a massive trophy. However, there was not a piece of furniture in his small Manhattan apartment with legs strong enough to support it. Robinson was elected to the *Ring Magazine* boxing Hall of Fame in 1967, two years after he retired and the International Boxing Hall of Fame in 1990. In the late 1960s he acted in some television shows, like *Mission: Impossible*. An episode of *Land of the Giants* called «Giants and All That Jazz» had Sugar as a washed up boxer opening a nightclub. He also appeared in a few films including the Frank Sinatra cop movie *The Detective* (1968), the cult classic *Candy* (1968), and the thriller *The Todd Killings* (1971) as a police officer. In 1969, he founded the Sugar Ray Robinson Youth Foundation for the inner-city Los Angeles area. The foundation does not sponsor a boxing program. He was diagnosed with diabetes mellitus that was treated with insulin.

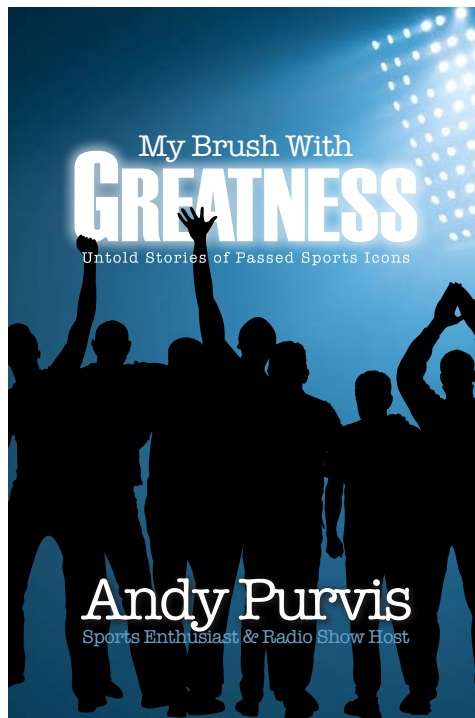
Sugar Ray Robinson died in Los Angeles from heart disease on April 12, 1989, at the age of 67. Robinson is buried at Inglewood Park Cemetery, Inglewood, California. He once said, "Everything in boxing, every move you make starts with your heart, and that's in rhythm or you're in trouble."



Private Walter Smith Jr.

Robinson was the modern definition of a boxer puncher. He was able to fight almost any style: he could come out one round brawling, the next counterpunching, and the next fighting on the outside flicking his jab. Robinson would use his formless style to exploit his opponents' weaknesses. He also possessed great speed and precision. He fought in a very conventional way with a firm jab, but threw hooks and uppercuts in flurries in an unconventional way.

TO BE CONTINUED



Andy has a book signing on Saturday March 16 at 1 pm at Barnes & Noble in Moore Plaza. It features his tenth book of the Greatness Series titled "My Brush With Greatness."

Would love to have you stop by.



This musician Minnesota Al organizes a gospel country music venue every Wednesday, at the Community Presbyterian Church, called Port A Opry. OOO boy do we have fun. He also plays at bars and theaters as well as church.

Around cont. from A1

need to be heard from so vote early and vote often. And remember this is South Texas so your voting rights don't end at the grave.

Commodores Park plan

Plans are coming together for improvements at Commodores Park and the city staff has scheduled a public meeting on Wednesday, March 20, from 6:00 p.m. to 7:00 p.m. at Seashore Learning Center, 15801 S. Padre Island Drive to review the proposed park design and gather feedback from Islanders. We only get one chance to get this right folks so be there or forfeit your right to complain later...

Timber!

If you are looking for firewood Around The Island this week look no further than the beach where kindling is washing up south of Packery Channel and heavy timber is

arriving further south. It's a bit soggy but, hey, aren't we all these days? This all for now get ready to Spring Forward everybody and say hello if you see us Around The Island.



ServiceMASTER Clean®

24 Hour
Emergency Service

Carpet Cleaning
Air Duct Cleaning
Upholstery Cleaning

Tile & Wood Cleaning
Fire & Water Damage
Restoration

Call for our Daily Specials
361-993-9300

book online at www.servicemaster-tx.com

SAVE ON YOUR FAVORITES THIS
WB SPRING BREAK



CHECK OUT OUR
GREAT SPECIALS
AT ONE OF
FOUR LOCATIONS
NEAR YOU!

PORT ARANSAS
1812 Hwy 361, Suite G
(361) 749-9101

CORPUS CHRISTI
14457 S Padre Island Dr, Ste 105
(361) 949-0080
3237 S. Alameda
(361) 852-0499
6181 Saratoga Blvd, Ste 103
(361) 985-0630

Prices valid 3/1/2024 thru 3/31/2024. In the event of an error, store price prevails. Please drink responsibly.

New Boat Coming to Buccaneer Cruises in North Padre Island!

The Bay King is 55ft of bay fishing excellence! For many years this vessel fished the waters of the lower Laguna Madre out of South Padre Island. Starting March 2024, this legend makes its way to the upper Laguna Madre to call North Padre Island its new home.

Reserve your trip at BuccaneerCruises.com or call 361-742-3195





By Jay Gardner

On the Rocks

Things have really hit the skinny pedal on the right lately folks. There are too many moving parts to keep my finger on the pulse of it all. I know it sounds cliché coming from me, but we had the largest and best Big Shell Clean Up this past weekend that we’ve ever had. Over 2,000 volunteers cleaned up over 30 miles of the Seashore. And I mean “over,” because I saw people north of the 20 mile marker stopping and cleaning up a few more sections. We’ll get the final numbers to you in a later edition from the Friends of Padre, but the volume was 7 full dumpsters. I got to snap a pic with Albert of Weinerschnitzel and “Shelly” of the Park after the event, thanks to both for helping with the event.

Hummingbirds are headed our way

The hummingbirds will be heading our way starting this weekend. The bird migration forecast maps on BirdCast will resume Saturday to start planning your bird feeding, nesting, and watching activities. I’ve already heard a few reports of some early migrants and have put one of my hummingbird feeders up already, just in case. Of course, the golden-fronted woodpeckers found it immediately, and have been having a field day with it. I also noticed that one of my nest boxes from last year has been taken over by some starlings because the woodpeckers made the hole bigger. I’ll need to pull that down and start over with some fresh boxes.

The ebb and flow

I’ve been very keen on the water levels and tides lately due to monitoring, and have noticed that either the tides have been below average, or the Packery Channel station is down and CBI is working on the Aquatrak. Either that or the winds coming out of the southeast have muted the tidal swings. I’m thinking we are at the bottom of the low tides and should start to come back up. It’s hazardous out there in the Laguna unless you’re staying in the channels and know your way around.



Albert, Shelly, and me.


Tides of the Week

1 Mar	2 Mar	3 Mar	4 Mar	5 Mar	6 Mar	7 Mar	8 Mar
Fri ↗	Sat ↗	Sun ↗	Mon ↗	Tue ↗	Wed ↗	Thu ↗	Fri ↗
8:44AM 1.18ft	12:03PM 1.35ft	1:06PM 1.54ft	1:51PM 1.71ft	2:32PM 1.77ft	3:08PM 1.77ft	3:35PM 1.71ft	3:49PM 1.51ft
	00:28AM -0.2ft	1:24AM -0.33ft	2:31AM -0.46ft	3:45AM -0.56ft	4:58AM -0.62ft	6:06AM -0.66ft	7:10AM -0.59ft
							8:54PM 1.25ft
6:52AM 6:29PM	6:51AM 6:30PM	6:50AM 6:31PM	6:49AM 6:31PM	6:48AM 6:32PM	6:47AM 6:32PM	6:46AM 6:33PM	6:45AM 6:33PM
10:06AM	10:44AM 00:08AM	11:29AM 1:08AM	12:23PM 2:10AM	1:24PM 3:11AM	2:32PM 4:08AM	3:43PM 4:59AM	4:54PM 5:44AM



By Joey Farah
Farah’s Fishing Adventures

Backwater Adventures



Matt Sheehan bagged this big trout from the Laguna Madre last weekend.

The Winds of March

Every year I hear “this is the windiest spring I’ve ever seen!”, well folks March is always windy. The years of the best fishing in the Coastal Bend are those years when we get some good cold snaps that bring the water temps down into the high 40’s. This is a zeroing trigger that kills the algae blooms, kills the shallow grass, and resets the clock for the fish that live in our back bays. It concentrates the bait sources and gamefish. We are now well past all of that and in SPRING FISHING!

The struggles between the land and the sea in temperatures create the pull of the wind. The cold fronts that we will be getting are short lived but, the high winds that pull from the south and south east will last for days before we get the north wind. Don’t wait for the few calm wind days to get out on the water or you will have missed the bite.

In high wind conditions I drift fish with lures, even in dirty water. Gamefish are using a lot more than their eye sight, they feel, hear, smell, and see their prey. I slow my boat down with 1, 2 & even 3 drift anchors. Make long casts with the wind and bump the bottom and flutter the mid column, and dance topwaters all day long. Using the three levels of the water column to find exactly what they want at that time. Jig head sizes range from the boat between 1/8-1/4oz, dark, bright, and natural color paddle tailed soft plastics make more vibration. Popping corks work incredible, for live bait and soft plastics. This imitates a shrimp getting attacked by a gamefish on the surface, everything comes in to steal the shrimp. Lots of variety of styles, sizes, and types of rattles, experiment, and vary what you are using. You will do best to alternate casts with the people on the boat and group the corks together, it’s too much noise and can spook bigger fish. Don’t be spooked off by the wind, or windy shorelines. Bait will get washed up into the shallows and that’s where you will find those big redfish! Trout tend to feed better along protected shorelines and breaks with better water quality.

MARKER 37 REPORT

LIVE SHRIMP AND SEA LICE ARE AVAILABLE more and more now as it’s getting warmer. Bottom fishing in the ICW south of the JFK Bridge with cut sea lice is a hit for black drum. With live shrimp you will be catching everything that swims! The east shoreline south of Bird Island Basin is a great place to drift or wade this week with the strong winds. The spoil islands along the ICW there are also full of both redfish and trout all the way to Baffin Bay. There are some great boat slips open at the marina waiting for your family to enjoy your boat with ease. Just pull up and jump in. You can reserve bait at the marina and security there is on point.



Kristen Harring Graf from Minnesota caught this redfish in the LaGuna Madre using a live shrimp.



PADRE
DERMATOLOGY
& Skin Cancer Center

Island Owned and operated
Physician staffed office
Fellowship trained Mohs surgeon
Double Board Certified
in Dermatology and
Mohs Micrographic Surgery

14650 Compass St Ste 1
Corpus Christi, TX 78418
361-867-1032
www.padrederm.com

Accepts Medicare United, Humana, BCBS, WellMed
Reasonable Cash Pay and Out of Network rates

New and Existing patients call to schedule
Existing patients, we still have all old records available.

Nature Notes

Texas Rookeries

By Chris Schnurbusch



Great Egret with three chicks at the Resoft Park rookery.

Photo taken by Mary Lou Dupart.

With February drawing to a close, everyone is anxiously waiting for spring to arrive. Can you feel the cool breeze in the air, the sun on your face, that feeling of warmth as you step outside? The birds certainly feel it.

Birds are preparing for their breeding season and the challenges that come along with hatching and raising their chicks. They’ve got a lot of choices to make: what nesting material they should use, what partner will be reliable, the best location for their nest, and a host of other decisions. Some birds choose to nest with a variety of species in the same location, all living together and raising their young. This is called a rookery, and there are good reasons why some birds do this. For one, rookeries provide a safe, communal space to hatch and raise their chicks. A large group of birds will deter predators that might otherwise try to eat them: strength in numbers!

There’s a social aspect, too. Young birds learn to socialize in a big group, while the older birds work together to raise their chicks. With all of the advantages and protection rookeries provide, chicks have a much better chance of surviving. Not just any location can be a site for a rookery. Just like how you have certain ideas for the location of your home (maybe you’d like a nice ocean view, or to be within walking distance from a park), these birds look for ideal habitats. A good location has plenty of opportunities to hide from predators. An island can provide that protection, and

tree branches provide cover from predators and places to nest. As a bonus, Alligators surrounding the islands help keep predators away. It also helps to have tall grass and shrubs for cover as well. Since these birds eat fish and other aquatic animals, a good, nearby water source is a must. Seabirds in particular, such as penguins and gulls, like to form rookeries on cliffs, which gives them protection from predators and easy access to food and water.

Our rookeries in Texas are mainly composed of egrets, herons, Roseate Spoonbills, and cormorants. You may also be able to find ibises and Anhingas. These species don’t all come in at one time. The earlier arrivals, like the Black-crowned Night Heron, will begin looking for a suitable location in February. Those that follow will settle in locations that the earlier birds picked, trusting them to find the perfect site. Cattle Egrets are among the latest arrivals.

Grab a pair of binoculars, a camera, or a sketchbook, and head out to a rookery near you. Perhaps you’d like to watch the Roseate Spoonbills at the Smith Oaks rookery at High Island, or photograph a Black-crowned Night Heron at the Delores Fenwick Nature Center in Pearland. Just remember to respect and appreciate wildlife from a distance—they’re working hard to raise their chicks, after all!

Rookeries are vital to the survival of these species, and these bird populations may be experiencing decline due to habitat loss, human intervention, and predation. Conservationists are working to protect and expand locations where rookeries are common. Interested in helping our bird species? Visit the Gulf Coast Bird Observatory or Audubon Texas websites to learn how you can get involved!

Chris Schnurbusch
Biology Intern
Gulf Coast Bird Observatory
www.gcbo.org

Chris Schnurbusch is interning at Gulf Coast Bird Observatory this winter and spring. GCBO is a non-profit organization dedicated to saving the birds and their habitats along the entire Gulf Coast, and beyond into their Central and South America wintering grounds.

and under age 2 is \$5. Go to the website to book online. For more info call 252-1510.



Padre Island National Seashore offers “Ranger-led Walks to Novillo Line Camp” every Saturday at 10 am until March 30th. It was one of the cattle ranching camps on the Dunn Cattle Ranch in late 19th and 20th centuries. The walk is about 3/4 mile round-trip and the guided portion is about 30 minutes. Space is limited and sign-ups are required. Call 949-8068.

Port Aransas Community Theater will feature a Johnny Cash Tribute with Bennie Wheels “Walkin’ the Line” on Saturday, March 9th and a Fleetwood Mac Tribute “Dreams” on Saturday March 16h. Both shows are 8 - 10 pm with doors opening at 7 pm.



Fleetwood Mac Tribute Band

The Native Plant Sale and Plant Swap presented by Keep Port Aransas Beautiful will be at Roberts Point Park on Saturday, March 2nd.

Daylight Savings Time is March 10th so it will stay lighter later.

The Padre Isles Property Owners Association Candidate Meet & Greet will be at the Wyndham Resort on Thursday, February 29th 6 pm. Eight members are running for three seats. The board election is March 23rd.

Going Native

Deep Freeze, la Nina, and Drought

By Dr. Ed Proffitt

Our hard freeze is behind us and birds beginning to migrate suggest spring is right around the corner. Some of my native plants did well in the freeze: skeleton daisy, sophora, swamp mallow for example showed few ill effects. Our hackberry and lantana are leafing back out as are a couple of others. The beautyberry, and firebush didn’t fare so well though. They may still leaf out – I’m hoping for the best.

Unfortunately, climate scientists are watching a cooling of water in the tropical east Pacific that has a 77% chance of moving us into La Nina conditions perhaps by June. For Texas and many other sections of the nation, that means a likelihood of extreme drought if our spring rains are not forthcoming in earnest. Indeed, the U.S. is already abnormally dry. According to an article by Axios, some 82% of the country is in abnormally dry conditions now. That’s the highest percentage recorded since the Drought Monitor began in 2000. That same report cites Texas state climatologist John Nielsen-Gammon as noting that Texas currently has about 68% of its needed water storage capacity, when at this point in more typical years it’s at 80%. This doesn’t even address the other major issue we could face in a strong la Nina year --- increased hurricanes because of reduced upper atmosphere wind shear.

To begin addressing the problem as soon as possible, the smart gardener will take heed and begin planting more drought tolerant plants. I, of course, encourage you to use native, drought tolerant plants! Planting natives, and I mean not just native to Texas, but to our region and even better to the island itself, provides many benefits as I’ve noted numerous times in my columns over the last couple of years. They help save our dwindling fresh water resources by not needing supplemental watering during hot, dry summers. Native plants provide greater benefits that exotics to pollinators, and to migratory birds passing through.

Those that are, well, maybe less smart or uncaring of nature will continue on with invasive and/or water-guzzling non native grasses, and other exotic plants that require extensive watering. Some,



sophora tomatosa flower

likely many based on my observations in past years, will cheat us all of our water resources by running sprinklers on days other than their trash day during the intensity of summer. That means that more of us have to plant even a greater percentage of native plants to make up for the water-cheaters. Enforcement has been a bit lax by our governmental officials, and as droughts are expected to increase in frequency and intensity in future decades, officials need to beef up enforcement, education, and further codify the use of native drought tolerant plants. POAs and HOAs should change any rules that don’t encourage the use of all water-conserving measures. Do I expect any of this to actually happen? Of course not, at least not in the near term because of developer and landscaper inertia to “keep doing what we’ve always done.” But, I predict that one day we’ll face more firm regulations from local or state governments that will be necessary to conserve water especially given human population growth in the area. I’ve called for this before, but it’s apparently fallen on deaf ears, we could really use leadership from the PIPOA on this topic, as well as from land developers and landscapers. Together, they could take the initiative and mitigate any future rules that’ll be placed on all of us. Done well, we might become a showcase for coastal communities and thus attract more people who like to “live alongside nature.” Plus, Going Native is the right thing to do to keep our Sand Bar as ecologically healthy as possible as our population grows. Ok, I’m off my soap-box...for now!



Business Briefs

By Mary Craft
mkay512@aol.com

Dog Style is coming to the food truck at the Island Market IGA parking lot. Lisa Jones will be serving Italian beef sandwiches, Polish dogs, Chicago style hotdogs, kraut dogs, chili dogs and cheesesteaks. All will be made with Vienna beef products. The opening will, hopefully, be Thursday, March 7th. This Chicagoan will be a regular!



The Island Market IGA will be adding a salad bar and hot food bar in April. They are playing around with the hot food items right now and have come up with for “Greek Day” falafels on pita bread with tzatziki sauce and you can add feta cheese or Kalamira olives. It is an ancient Mediterranean street food made of chickpeas. For “Picnic Day” ribs and baked beans and “Pasta Day” chicken Alfredo. They are also working on a breakfast menu like biscuits & gravy.



IGA falafel sandwich

Padre Boat Tours is now available on weekends and in its second year is adding a beautiful loop cruise through the Don Patricio Bridge to their dolphin and sunset tours. The two hour cruise onboard the 35’ Packery Queen is \$39, for ages 2 - 9 is \$29

Hot Wheels Monster Trucks will be at the American Bank Center on Saturday, March 23rd 12:30 pm and 7:30 pm and Sunday 2:30 pm.



Coastal Pet Supply & Exotics latest addition is the axolotl which is part of the salamander family. It is very interesting in that it lives 10 - 15 years mainly because it can regenerate any organ or limb it needs. It also doesn’t age during that time. A fun place to take the kids during spring break with their more than 50 reptiles, parakeets, chinchilla, bunnies, guinea pigs and more. They also do dog grooming and are now open until 9 pm Tuesday - Sunday. The store is located in the Pelican Plaza.



Spring Break is spread across only one week this year instead of two and starts Friday, March 8th.

There will be a total solar eclipse on Monday, April 8th darkening the skies for about four minutes and dropping the temperature about 10 degrees.. The path in Texas will run through San Antonio, Austin and Dallas. Here we will only be able to see a partial eclipse. The next total solar eclipse will be in 2044.

The Corpus Christi Police Department Auction will be held at 5485 Greenwood Drive on Saturday, March 2nd at 10 am. There will be more than 75 cars, trucks, motorcycles, ATVs, and jet skis. You must pre-register with siskauction.

The Fulton Oysterfest is next weekend Thursday, March 7th 5 pm, Friday 5 pm, Saturday 10 am and Sunday 10 am - 6 pm. Lots of vendors and more than a dozen bands.

Kiwanis Bingo at the Beach will have its last bingo of the year on Tuesday, March 5th at Hardknocks 7 pm - you can start buying cards at 6 pm. Hardknocks owner Rod suggests you carpool, get dropped off, park at school, bring your golf cart or park on Palmira Avenue for this popular event.

Spoonbill Bay Development is a 205 unit housing development on the bayside of Highway 361. It is different from other Port A developments in that they are cottage style homes starting around 800 square feet with each home having a private pool. Pricing starts around \$500,000 and is expected to cater to people in San Antonio and Austin who want a second home near the beach rather than STRs. The developers are Ale, Harris, Craig Kerr and Willard Hammonds, Jr. who have done many projects including Aruba Resort on the Island.



Island Timeline

The Sushi Bar was the first one in Corpus Christi and Chef David Lee opened it in 2007 in the half of the current Rock & Rolls Sushi Bar without the bar. The half with the bar was The Office Lounge which later opened a second location on the Southside called TO2. When the Office Lounge wanted to expand the restaurant had to leave but came back with new name in 2015.

Random Stuff

The UFL is the new spring football league that consists of eight teams that play for 10 weeks starting Saturday, March 30th. Three of the teams are in Texas - San Antonio, Houston and Arlington. Owners include Fox Sports and Dwayne “The Rock” Johnson. There will be two games shown on TV on Saturday and two on Sunday. The games will be televised on ESPN, ABC, Fox and FS1

Spring Break on the Coast

2024

Corpus Christi, Texas

Midland

with

Megan Moroney

Carson Jeffrey & Tyler Halverson

March 9th

Scan QR for

More Info

ConcreteStreet.net

OLD CONCRETE STREET AMPHITHEATER

JERI MATHISEN

Mgr/Escrow Officer

MARSHA TATOM

Escrow Officer/Asst.

BRENT CHESNEY

CEO/Gen. Counsel

EMILY CLOWER

Marketing Rep.

STACEY LESLY

Marketing Rep.

JEANEAL DENNIS

Marketing Rep.

Pradlly serving the Coastal Bend for over 50 years.

FIRST TITLE COMPANY

N. PADRE ISLAND OFFICE

14641 SPID, Suite A

361-949-3075

www.firsttitlecompany.com

GEOCRETE

Decks, Docks, & Boat Lifts

Our Services:

• DECK AND DOCK BUILD OUTS

• DECK AND DOCK REPAIRS

• BOAT LIFT SERVICES

• PILING SERVICES

• RETAINING WALLS

Our Contact:

361-230-3406

721 Nas Dr.

Corpus Christi, TX 78418

Hornet The Flour Bluff NJROTC team is state champion for the 25 time after winning the competition at Texas A&M University. Since their 1st year, in the 1993-1994 school year, the team has won 25 State Championships. Congratulations Sea Hornets!

Are You Ready For The Next Hurricane?

Storm? Freeze? Tornado? Grid Failure?

Call Us

361-782-6329

GENERAC

GeneratorSupercenterOfCorpusChristi.com

COASTAL BEND REPUBLICAN COALITION

COASTAL BEND REPUBLICAN COALITION

HQ—14602 SPID—Ste 230—Corpus Christi, TX 78418—361-290-7068

YOUR VOICE REALLY MATTERS

VOTE!!!

2024 Primary Election, March 5 (Early Voting Feb 20—Mar 1)

This CBRC Voter Guide lists Endorsements that are the choices of our Vetting Committee after meeting and researching many of the candidates.

Due to Space limitations, We only list here the contested races.

We encourage you to GO ALL THE WAY DOWN the ballot and VOTE FOR EACH OFFICE.

Several offices are hotly contested; your vote will make a difference!

Please vote for each one of these Republicans.

State Law permits you to take this Voter Guide to the Polls.

Federal, State & County-wide Offices	
OFFICE SOUGHT	CANDIDATE
President	Donald J Trump ✓
U. Senator	Ted Cruz* ✓
US Representative CD27	Michael Cloud* ✓
Railroad Commissioner	Christie Craddick* ✓
Justice Supreme Court, Pl. 4	John Devine ✓
Presiding Judge, Court of Criminal Appeals	David Schenck ✓
Judge, Court of Criminal Appeals, Place 7	Gina Parker ✓
Judge, Court of Criminal Appeals, Place 8	Lee Finley ✓
District Judge, 28th Judicial District	Michael McCauley ✓
District Attorney	Jimmy Granberry* ✓
County Constable Precinct 2 (F Bluff)	Jason McMahan* ✓
Local Offices, Not for Islanders & Flour Bluffians	
OFFICE SOUGHT	CANDIDATE
County Commissioner Precinct 1	Mike Pusley ✓
County Commissioner Precinct 3	Larry Cantu Jr ✓
County Constable Precinct 5	Oscar Mendoza* ✓

Candidate is an incumbent *

Ballot Propositions on the back of this card

Paid for by Coastal Bend Republican Coalition;

Not funded by any candidate or candidate's committee.

www.cbrepublikans.com

WHAT ARE THESE BALLOT PROPOSITIONS?

This is an opinion poll of Republican voters, prepared by and for the Republican Party. It is not a policy referendum. You are not voting to make a law but merely saying YES you agree or NO you do not agree with the statement, and believe, as a voter, that these should be made into law by the next Legislature.

REPUBLICAN BALLOT PROPOSITIONS

#	Issue	Vote
1	Texas should eliminate all property taxes without increasing Texans' overall tax burden.	Y
2	Texas should create a Border Protection Unit, deploy additional state law enforcement and military forces, to seal the border, to use physical force to prevent illegal entry and trafficking, and to deport illegal aliens	Y
3	The TX Legislature should require the use of E-Verify by all employers in Texas to protect jobs for legal workers .	Y
4	The TX Legislature should end all subsidies & public services, including in-state college tuition & enrollment in public schools, for illegal aliens.	Y
5	Texas urges the US Congress not to grant any form of amnesty or a pathway to legalization for illegal aliens	Y
6	The TX Legislature should prohibit the deployment of the Texas National Guard to a foreign conflict unless Congress formally declares war.	Y
7	The Texas Lege should establish authority within the TX State Comptroller's office to administer access to gold & silver through the TX Bullion Depository for use as legal tender.	Y
8	The State of TX should ensure that Texans are free to give or withhold consent for any vaccine.	Y
9	The Republican Party of TX should restrict voting in the Republican primary to only registered Republicans.	Y
10	The Texas Constitution should be amended to restore authority to the TX Attorney General to prosecute election crimes.	Y
11	TX parents and guardians should have the right to select schools, whether public or private, for their children, & funding should follow them .	Y
12	The TX Constitution should be amended to require proof of citizenship to registered to vote.	Y
13	Texas should ban the sale of Texas land to citizens, governments, and entities from China, Iran, North Korea, and Russia.	Y

Coastal Bend Republican Coalition Meets Every Thursday

6:00pm Social Boathouse Bar and Grill

6:30 Business Meeting 15241 Leeward Dr. - Padre Island

7:15 Guest Speaker

Coastal Bend Republican Headquarters

14602 SPID #230 On Padre Island!

info@cbrepublikans.com – 361-290-7068



COLDWELL BANKER
ISLAND ESCAPES

COLDWELL BANKER ISLAND ESCAPES

14945 S. Padre Island Dr., Corpus Christi, TX 78418

361.949.7077 or 800.580.7077

www.cbir.com

Selling Padre Island since 1986



15806 Gypsy 4/3/2 plus bonus room. 2364 sq.ft. Water softener, whole house carbon water filter, outdoor water/gas connection. Big backyard with plenty of room for a pool! **\$519,900**
Call **Randy Corpuz** 361-765-9914



13718 Sea Horse Ave 3/2/2 plus bonus room @ 1684sqft. Open floor plan, split bedroom layout, and tile flooring throughout. The backyard boasts a covered patio and ample space for a custom pool. Call **Randy Corpuz** 361-765-9914.



14721 Whitecap Blvd. #395 Beautiful studio condo with vaulted ceilings with an amazing view of Lake Padre and short walk to the beach. **\$183,650** Call **Charlie Knoll** 361-443-2499



13801 Captains Row - Exceptional custom home, 151' canal front at fingertip of gated st. Elevator, pool, 2 lifts, sunset over ICW **\$1,750,000**. Call **Pam Morgan** at 361-215-8116.



14911 Village Beach Dr. 2/2 gorgeous poolside townhome just a quick walk to the beach! 1041 sq. ft. & fully furnished. **\$430,000**. Call **Kim Mogford** at 361-434-8522.



14521 E Cabana #301 1 of 2 pool side units at Marquesas Townhomes. Selling fully furnished and turnkey ready to rent or use. New interior paint, new furnishings, and new exterior AC. **\$331,900**
Call **Randy Corpuz** 361-765-9914.



15005 Windward Dr. #214 Fully furnished 2 bed, 1 bath, 955 sq ft Surfside Condo walking distance from the beach/seawall. **\$237,000** Call **Madeline Casey** at 361-443-0687.



14920 Packery View Loop 4 bed/ 4 bath 3-story townhome with views of the Gulf. Completely furnished. \$599,000 Call **Kim Mogford** 361-434-8522.



14802 Windward #228 2 bed 2.5 bath condo with amazing duneside views at a beautiful beachfront property. Fully furnished and ready for island living. \$399,900. Call **Charlie** 361-443-2499



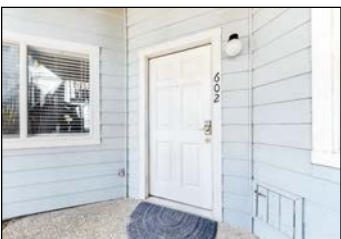
13969 Lanyard 4/3/2 2,540 sq.ft., stainless appliances, quartz & tile throughout plus lots of extras. **\$585,000** Call **Randy Corpuz** 361-765-9914 or **Charlie Knoll** 361-443-2499.



350 Royal Dunes
New Port Aransas Beach House in Mustang Royale built by Steve's homes.
3200 sq. ft.
3 story with 4 bedrooms,
2 full & 2 half baths,
2 living areas, 2 car garage,
covered patio,
3 balconies with amazing
views, impact windows.

SHORT TERM RENTALS ALLOWED.

Great primary or vacation home. Onsite pool, boardwalk to beach. **\$1,700,000**
Call **Cindy Molnar** at **361-549-5557**, for more details.



15010 Leeward #602 1BR/1BTH @ 620sqft. First floor fully furnished unit with a 3min walk to the beach. Notables are new bathroom sink, tub, kitchen faucets, water heater, & sofa bed mattress. **\$235,000** Call **Randy Corpuz** 361-765-9914



15102 Leeward #603 3/2/1 @ 1610sqft. Extremely well-maintained townhome with a short walk to the beach. Sleeps up to 10 guests. Selling fully furnished and turnkey ready. **\$349,900** Call **Randy Corpuz** 361-765-9914



15005 Windward Dr. #216 Fully furnished 2 bed, 1 bath, 955 sq ft. Cozy courtyard view and walking distance from beach access. **\$299,900** Call **Charlie Knoll** 361-443-2499.



4118 Claudia Dr Selling "AS-IS" Ready for renter. Fresh paint & fridge, stove & washer/dryer. 3/1/1 1/2 blocks from Lookout restaurant. Easy to show. **\$185,000** **Tinker Boos** at **361-563-6641**.

New Homes Available by Steve's Homes



1910 Great Falls
4/3,5/3
\$845,000



**Open Sundays
1:00 PM — 3:00 PM**

13841 Hawksnest Bay Dr.
4/3/3
\$585,000



15230 Capstan
4/3/2 Pool size lot
\$559,900



15886 Punta Espada
4/3/2 Waterfront
\$1,095,000

Let Steve's Homes build your
Custom Dream Home on your lot!

Call Cindy Molnar 361-549-5557



COLDWELL BANKER
ISLAND ESCAPES

Looking for Professional Long Term Property Management Services?

361.949.2131 877.269.2131
www.rentpadreisland.com

Ready to Lease Your Property?

Our services include:

- Tenant Qualifying
- Collections of Rents
- Coordinating Repairs & Maintenance
- Professional Itemize Monthly Statements
- Marketing/Advertising

Looking for Long Term Rental Property?

14858 Granada #203
3/2/1 townhome
Waterfront complex
\$2100/month

15422 Salt Cay A & D
1/1 waterfront units
\$1100/month
each

14813 Leeward 502
3/2/1
Waterfront
\$2,700/month

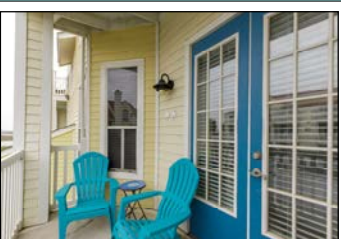
15201 Cartagena
3/3/2
\$4850/month
WATERFRONT

13906 Mingo Cay #6
2/2
waterfront complex
\$1350/month

15442 Cruiser B
3/2/1
\$2,000/month



14802 Whitecap Blvd. #203
2/2 Feet from the beach! Great views. Completely furnished. **\$349,000** Call **Kim Mogford** 361-434-8522



14721 Whitecap Blvd. #294
Island living ready. Fully furnished condo with pretty views. Great complex amenities! **\$194,900** Call **Charlie** 361-443-2499 or **Sam Luarca** 361-765-0390



COLDWELL BANKER
ISLAND ESCAPES

**WELCOME,
KRISTINA
LAND!**

Kristina is Coldwell Banker's
newest agent to the team, and we're
so happy to have her onboard.

**FINDING THE IDEAL PROPERTY
FOR YOU AND YOUR FAMILY
TO ENJOY WHILE YOU EXPLORE
ALL THE TEXAS GULF COAST
HAS TO OFFER
SINCE 2013**



361-949-0430 info@padreesapes.com



PADRE
Escapes



Winter Texans of the Week!

Jill, Molly and Mittens are friends who have been Winter Texans at Surfside for many years. They were hoping they could get their photo in *The Island Moon*.



Good day to be a gator. Evelyn Pless-Schuberth

HARDKNOCKS

SPORTS GRILL

**ALL THE GAMES
ALL THE TIME**

11 AM - 11 PM DAILY

15401 SOUTH PADRE ISLAND DRIVE • 361-589-4397

**COASTAL
LifeTURF**
We Can Turf That!

Front and Back Yards • Dog Runs • Pool Decks • Patios • Putting Greens
Play Structure Areas • Commercial Applications • Indoor Turf and More!



WE OFFER EASY FINANCING

Get your dream project done with affordable monthly payments!



Brighten up your landscape with natural looking and natural feeling artificial turf. Your whole family will love it!

- PROFESSIONAL INSTALLATION
- PET SAFE & PET FRIENDLY
- NO MORE MOWING
- SAVE WATER!

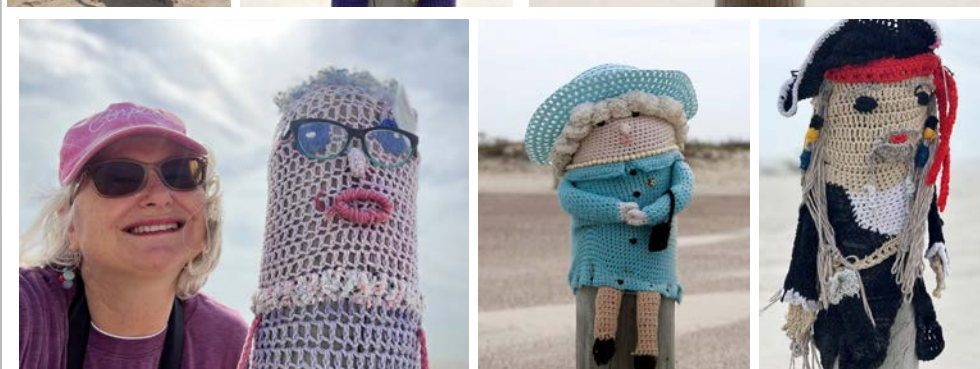
MOON SPECIAL
\$500 OFF

Discount applies to installation. Restrictions Apply.

7522 BICHON, SUITE 301
CORPUS CHRISTI, TX 78414

**NEXT 2
NATURAL
TURF**

361-300-4671
CoastalLifeTurf.com



Bollard Buddies By Debbie Noble

WADE IN THE WATER

POOL & SPA SERVICES

WEEKLY MAINTENANCE • EQUIPMENT INSTALLATION • REPAIRS • REMODELS

15715 S. Padre Island Dr. #101
FREE Water Testing!

Wade in the Water Pool Services LLC
361-658-8581
www.WadeInTheWaterPools.com

WHITECAP

NORTH PADRE ISLAND

ARTIST'S CONCEPTUAL RENDERING

NOW PREVIEWING

A DESTINATION COMMUNITY LIKE NO OTHER

SALES CENTER OPEN
TUESDAY-SUNDAY | 10 AM - 6 PM

14353 Commodores Drive,
Corpus Christi TX 78418

©2023 Diamond Beach Holdings, LLC - All information and services are subject to change. Availability, prices, materials, and options may vary. All photographs, renderings and other depictions are for the sole purpose of illustration and are subject to change. Imagery is representational and does not depict specific buildings, views or future architecture, community amenities or other details. Architect: PLACE Designers, Inc.; Landscape Architects: Cadence; Marketing & Sales by Strategist LLC.

EQUAL HOUSING OPPORTUNITY: Models do not reflect racial or ethnic preferences. Not an offer or solicitation to sell real property. Whitecap NPI does not discriminate against any class of persons protected by federal, state or local law.

WhitecapLivingNPI.com

Bulkheads - Boatlifts - Docks



RPT Docks and Decks

(361) 229-0033

gagedental

FAMILY & COSMETIC
John L. Gage, D.D.S.

- Routine Check-ups
- Cosmetic Dentistry
- Root Canal Therapy
- Extractions
- Implant Treatment
- Crown & Bridge
- Dentures
- Teeth Whitening

Free whitening for qualified patients

361-867-1800

We Treat Your Pets LIKE FAMILY!

Keepin' Dogs on the Beach!

Island Animal Clinic

Bill McGehee, DVM & Associates

- Medicine • Surgery
- Diagnostics • Radiology
- Pharmacy • & More!

Mon-Fri by Appointment

319 Beach St.
next to The Crazy Cajun Restaurant

361-749-4134

NOW OPEN



Thoughts from Reverend Ken

By Rev. Dr. Ken

A story is told about two friends, one of whom placed a bumper sticker on the back of his Chevy, “I follow Jesus.” The friends were out driving in the car when someone pulled in front of them just before a stop light. The friend who owned the car became angry. When the light turned green, he sped around the other car, pulled in, and slowed way down. The other driver honked. At the stoplight both drivers jumped out of their cars. The one driving the car behind the friends wanted to know if, “this is what following Jesus looks like?” Ouch!

Sounds like a story that could have happened trying to zipper merge over the bridge the last several weeks. I suppose one needs to be especially careful of the bumper stickers placed on a car, especially if we claim to follow Jesus.

Hypocrisy. The root of that word goes back to the ancient Greek theater. Hypocrites were play acting, pretending to be something or someone they were not. In survey after survey, those who have left the church or organized religion cite hypocrisy as one of the factors affecting their decision. They have experienced hurtful actions and judgments. Grace, acceptance, compassion, and love were talked about, but judgment, hate, meanness, and exclusion were practiced. It’s enough to make this pastor’s heart break. The emotional scars from church bear heavily on many.

In the Bible, Jesus had lots of harsh things to say about hypocrisy. People may not live what they profess, but they will always live what they believe. This is why Jesus had a lot to say about hypocrisy. It’s a matter of integrity.

We can’t control much in life, even though we try desperately to do so. But one thing we can control is our integrity. The Bible is actually somewhat silent on the actual term integrity. However, it is filled with passages urging integrity, without directly using that term.

For example, in discussing a life of faith, Scripture says, “But the fruit of the Spirit is love, joy, peace, forbearance, kindness, goodness, faithfulness, gentleness, and

self-control. Against such things there is no law.” This is a list that defines a life of integrity, a life that brings goodness and blessings to all people. Integrity is walking in the way of Jesus.

C. S. Lewis commented about the tendency in all of us to exaggerate our depth of character while treating leniently our flaws. We always want to put our best forward to the outside world. Yet, all of us have a shadow that we don’t want to see, and that we don’t want others to see. The shadow is not evil. It just allows us to do evil without calling it evil.

This is why Jesus criticized hypocrisy more than anything else. Jesus was never upset with sinners; he was only upset with people who thought they were not sinners. We cannot get rid of the shadow; we can only expose its gace.

Following Jesus is never about being perfect, or even giving the illusion of having it all together. There is no such thing as a perfect church or a perfect Christian. Churches are full of humans, all of whom know brokenness firsthand. To live is to struggle, to hurt, to lose. Integrity rises out of humble honesty and the recognition of the miracle of grace and hope.

Integrity gives rise to a life marked by love, compassion, mercy, justice. It is to do good to all persons; it is to seek peace and pursue it; it is to demonstrate the patience towards others that we would like shown to us.

Each Sunday morning, a bunch of humans gather to worship God in community at Island Presbyterian Church, giving thanks for grace, forgiveness, love, healing, and hope, working for peace, justice, and reconciliation. There is always room at the table for you! I look forward to seeing you on Sundays at 10 a.m., 14030 Fortune Bay Drive, or on our Facebook page.

Choose kindness, compassion, and love; do justice and make peace; welcome the stranger.
pastor@islandpresby.com



Serenity by Bob Skipper

The serenity of a golden shore
That meets the rushing tide,
Rolling waves with foaming crests
That travel far and wide.

The peaceful sand accepts the sun,
With gradual mounting light.
The gurgle of the rolling surf
That shows the oceans might.

The sun shines bright as it lights the sky,
Serenity and peace abound.
The land gives thanks for its bounty
As the dawn light spreads around.

The sand dunes emit an ethereal glow,
Like crystal light so soft and pale.
The land is quiet in the dawning light,
Where serenity and peace prevail.



Waiting for Lunch By Debbie Noble

Since 1991

www.atlantiscorpus.com

Atlantis

Pool and Spa

Quality you can swim in!

(361) 563-7665 or (361) 949-8899

RESIDENTIAL & COMMERCIAL

Weekly Pool & Spa Maintenance * Repairs & Renovations

Island Resident

Shouldn't you be saying, "It's time to relax. My pool is ready."

Call Atlantis For All Your Pool Needs



The PA Rockers kept the Winters Texans rocking all winter at Bernie's. Their last show this season will be March 27. Photos by Ronnie Narmour

Trust

Padre Island and Port Aransas' Oldest Island Based Pest Control Company.

On Padre Island Since 1994.

Locally Owned by Island Resident
Bill Schroeder

15481 SPID Just past
Whitecap on Right

949-0208

Residential and Commercial Services
Termite * Ants * Rodent * Critter * Roaches * Spiders * Fleas

The Pest Control Professionals
OVER 30 YEAR EXPERIENCE

You Deserve Better Banking

Instant Debit Cards
Smart ATMs with Teller Access
24/7 Online Account Access
Mobile App Banking
Mobile Deposit Banking
Online Bill Pay

MEMBER FDIC

361-949-9310 | 14254 South Padre Island Drive

Featured:
Dan Herrington, Vice President, NMLS# 562367

Switch to First Community Bank at fcbot.com/switch

Sudoku

Sudoku answers are not available.
Play at your own risk!

Going Easy On You...

4	7		2		5			
			3				9	
8	3	5			1	6	7	2
					8			6
9		7		5		3		1
6			4					
5	9	6	1			8	2	3
	8				3			
			8	6		1	4	

Knuckle-Cracker

5				8			7	
	6	3	7		9			
2				4			6	3
		5		6			2	8
			1			4		
6	2			3		5		
1	8			9				4
			6		4	3	8	
	4			7				2

Mind-Numbing Frustration

		8		1	4		9	2
2					7	5		
						8		4
							7	3
4								6
1	2							
7		4						
			2	4				5
9	8			5	3		4	

Brain-Buster

2		1	5					
8				9				
		5	1					4
	5				6			
	1	7				6	2	
			4				5	
6					1	8		
				4				6
					3	4		9

Island Crossword

Crossword Solution on classifieds page

1	2	3	4	5		6	7	8	9		10	11	12	13	
14						15					16				
17						18					19				
20					21						22				
23					24					25					
				26				27	28				29	30	
31	32	33					34					35			
36					37	38					39				
40					41					42					
43				44	45				46	47					
			48						49				50	51	52
53	54						55	56					57		
58						59						60			
61						62					63				
64						65									

Across

1. Isn't apathetic
6. Stuff
10. Gunky mass
14. Word with ground or board
15. It could use a breath of air
16. Hospital helper
17. Movie hero's target audience?
20. Put to the test
21. Waterlogged
22. Sanctify
23. Conservative opening
24. Letters a collector receives?
25. Svelte
26. Singer's pocket money?
31. Dog-tired
34. Word on an itinerary
35. "No kidding!"
36. Bubble material
37. Like a three dollar bill
39. Pizzas, e.g.
40. Consumer enticements
41. Timber tree
42. Potatoes' places
43. Hitter's soup container?
48. "Fantastic Mr. Fox" author
49. Pollution-fighting org.
50. Mushroom feature
53. In the know
55. Division
57. Knuckle dragger
58. Game show
61. Formerly
62. Assuage
63. Studio prop
64. Grower's bane
65. Cry of shock
66. Rebuke (with "down")

Down

1. Louisiana bayou settler
2. Put down
3. Beau at the balcony
4. Three-faced woman of film
5. School term
6. Congest
7. It helps one climb the ladder
8. Raggedy pal
9. Disney World Studios
10. Item for the press?
11. Out of thin air, say
12. Exalted works
13. Vegas ventures
18. Prosperous period
19. Like a pro
25. Forgo a hit
26. Reward for waiting?
27. Summon
28. Type of type
29. Search for
30. CITGO rival
31. Pronto
32. Rich vein
33. It may occur before going home from the prom
37. Butterfly locale?
38. Currently possesses
39. Crony
42. Wrapped
44. Worked for
45. Actress Perlman
46. Swatted, as a baseball
47. Classic TV young'un
50. Partner of effect
51. Church areas
52. Shucks
53. Declare
54. Diminish
55. Pile underfoot, perhaps
56. Galileo's birthplace
59. Pint-sized
60. Boat steerer

Police Blotter February 19-26th

JFK Causeway to SPID-Aquarius intersection

Suspicious Person

10800 block SPID 1 am February 24
13400 block SPID 5 pm February 20 Arrest Warrant
14000 block SPID 1 am February 21

Traffic

17 Traffic Stops
13000 block SPID 3 pm February 22 Hit and Run
13300 block SPID 8 pm February 24 Crash
13300 block SPID 7 pm February 24 Hit and Run
13500 block SPID 6 pm February 20 Crash (two vehicles)
13400 block SPID 7 pm February 19 Crash
13700 block SPID 4 pm February 23 Crash
13900 block SPID 2 pm February 23 Crash

SPID West to Laguna Madre

Crimes against Person

14300 block SPID 8 am February 25 Assault
Gypsy St.-Bounty Ave. 11 pm February 24 Assault

Crimes against Property

14400 block Verdemar 3 pm February 24 Trespassing
13900 block Blackbeard Dr. 10 am February 24 Found Property
Cobo De Bara Circle-Tesoro Dr. 6 pm February 23 Trespassing

Disturbances

13400 block Whitecap Blvd. 4 pm February 26
14400 block Verdemar Midnight February 25 Noise Ordinance Violation
15200 block Main Royal 3 pm February 24
15400 block Grass Cay 7 pm February 21 Noise Ordinance Violation

Suspicious Person

14500 block SPID 9 pm February 26
13900 block Longboat 7 pm February 19
15400 block SPID Noon February 24 Noon February 24

Traffic

167 Traffic Stops
Whitecap Blvd. – Aquarius St. 5 pm February 24 DWI
14400 block Compass 8 am February 24 Parking Violation
14200 block SPID 8 am February 21 Crash

SPID East to Gulf of Mexico north to City Limits

Crimes against Person

14700 block Whitecap Blvd. 7 pm February 25 Assault

Crimes against Property

10000 block SH 361 1 pm February 24 Criminal Mischief \$750-\$2500

Disturbances

15000 block Gulf Beach 10 am February 20 Fire

Suspicious Person

15300 block Gulf Beach Noon February 25
14700 block Whitecap Blvd. 10 pm February 24

11100 block Gulf Beach 10 pm February 22
6300 block SH 361 Midnight February 25

Traffic

78 Traffic Stops
St. Augustine Ave. – Leeward Dr. 8 am February 23 Parking Violation
11100 block Gulf Beach 6 pm February 25 Reckless Driving



Marine Masters

Mobile Marine Service

Certified Technicians

- Yamaha
- Honda
- Suzuki
- Mercury
- Evinrude
- Mariner
- Johnson
- Volvo

We've been providing quality marine repairs at your place since 2001.

Operator Owner

Jon Reynolds

361-949-7570

361-728-1745

marinemasters@hotmail.com

10% Discount for Island Homes!

Red's

AIR CONDITIONING

SINCE 1986

Prompt Professional 24 Hour Service
No Overtime Charges

- All Makes and Models
- Commercial & Residential
- 10 Year Part & Labor Warranties on ALL New Equipment
- Financing available



(361) 949-9545

Serving Padre Island & Flour Bluff Since 1986



TACLB013184C



Moon Classifieds #1037

Here's how to place a Classified Ad

To place an ad you can call me at
361-834-1382 or
Email your ads to:
moonclassad@twc.com
No texts please
Costs start at \$12 for 25 words,
20 cents a word after that per issue.
For a small additional charge, your ad can be centered, made larger or pictures or clip art can be added. Ads with payment can be taken to our office at:
14646 Compass St., Suite 3
Deadline for classified ads is no later than NOON on Tuesday
PAYMENT MUST BE RECEIVED BEFORE PUBLICATION
We accept
American Express, Visa, MasterCard

Legal & Business Notices

Do you need to place a legal or business notice? You'll find that our rates for running your notice cost less than many other publication in Nueces County.
Call Arlene @ 361-834-1382
The Island Moon Weekly
for more information
The Island Newspaper since 1996

Real Estate



For Sale By Owner

Intracoastal Waterview

Deep Lot 60 x 100 sq. feet
213 Bayview Dr. (Lot 34)
City By Sea, TX 78336
\$250,000
361-215-9681

For Sale By Owner

2 bedroom condo across from beach
Asking \$280,000
Pictures at Padre Escapes
Under rental searches find unit 114
Sunkist Hut
817-808-7060

ISLAND HOME FSBO

Realtors Welcome



14041 La Blanquilla Dr
4/2 split BR design with 2,161 sq ft and beautiful water view
\$549,000
Call 301-848-5577 for appointment or more information
https://www.militarybyowner.com/tx/homes-in-corpus-christi./mbo/15000771

Services

Appliance Repair



-N- House Appliance Repair

Most major brands & appliances
Also offering complete dryer vent clean outs
Mention this ad for discount on repairs
361-960-0911

BBQ Cleaning

CALL



Because YOU don't want to do it!

Frank 361-813-1929 cell
361-99-GRILL (994-7455)
CoastalBendGrillCleaning.com

Car Detailing

Padre Island Mobile Detail

The Island's Premier Mobile Detailing Service!

We come to you providing Car Wash & Full Detail Services
Call or Text 361-550-2041
Check out our website for more details:
Email Hayden@padreislanddetail@gmail.com

Pool & Spa Services

ATLANTIS POOL AND SPA SERVICE

Weekly Pool Maintenance – Repairs
Renovations - Chemicals – Supplies
Residential – Commercial
25 Years Experience – Insured
Free Delivery! Free Estimates!
Island Resident Owned
Call 361-949-8899

Wade In The Water Pool Services

Cleaning • Repairs • Remodels
Hot Tubs • Warranty Station
Don't go OTB for pool & spa chemicals!
15715 SPID #101
Monday-Friday 9am-5pm
FREE WATER TESTING
Locally owned and operated since 2010
Call 361-658-8581

Services

Junk Removal



Save Our Shores Junk Removal

Veteran Owned & Operated
Furniture Removal & House Clean Outs
Construction Debris Removal
Light Demolition
Bulk Item Pickups
Hot Tub Removals
Fence Removal
Dumpster Rentals AND MORE!
Owners:
Tommy Hearn
Nate Epling
361-941-3041

Outdoor Services

Power Washing

ISLANDSCAPE MAINTENANCE

We Power Wash
Houses, Driveways, Fences, Decks & Sidewalks
Call us now to schedule an estimate
361-949-2773

Lawn & Tree Trimming

MPR SERVICES

Lawn Mowing
Gardening – Weed Control
Landscape Maintenance
Landscaping - Mulching
361-534-9924

Islandscap Maintenance



*Lawn Maintenance *Power Washing
*Palm Trimming *Fall Cutback
*Lot Mowing *Decks
*Installation

FREE ESTIMATES
361-949-2773



COMMERCIAL CUTTERS

Tree Trimming & Stump Grinding Services
Fully Insured – Free Estimates
361-446-3980

Home Improvements

Plastering

Hi Tech Plastering, Inc.

Stucco, Eifs Coatings, Patch Jobs
Crack Repair, Spalling Concrete Repair
Wood Replacement, Facia, etc.
Artisan – Joe Cantu
Phone/Fax 361-814-5605
htplastering@aol.com

Stucco

GOT CRACKS?

CALL THE STUCCO PROS
AT 361-949-2100

Home Repair & Remodeling

Fix It Right Remodeling

Serving the Coastal Bend Since 1986
Licensed, Insured, and Experienced
Homes and Condos
Exterior and interior work
From bathrooms, kitchens, flooring, painting, sheetrock work, stucco repair, wood fencing, pergolas
We've done it all!
361-765-4098

Red Coral Construction Company

361-688-6662

Home & Tiled Bathroom Remodeling
Additions • Carpentry • Painting
Siding Soffit & Fascia • Tiling
• Flooring • Concrete • Drywall and Fencing
Doors & Window Installation
Ask about our many more services to fit your needs
20+ Years Experience
License & Insured * Free Estimates
Dependable & Reliable Service

Roofing

Wolfe Construction, Inc.

• Insurance Restoration Specialists
• Roofing
• Residential & Commercial
Bryan Wolfe
361-949-1180
15809 El Socorro Loop
Corpus Christi TX 78418

ROOFING PROS!

Custom Home Exteriors, Inc.

Tom Sheehan 361-949-2100
Engineer Inspected/Windstorm Certified
Quality "Owens Corning" Shingles
Island Homeowner
Roofing Padre Island Since 1985!

BMM Roofing

Residential & Commercial

361-438-4095

Decks/Docks/Boat Lifts

Artistic Construction

Boat Lifts, Decks, Docks, Etc.
Licensed & Insured
Member of Padre Island Business Association
361-444-4702
Sunnie@ArtisticConstruction.cc

Al-Anon & AA Meetings

Is alcohol causing a problem in your family?
Try Al-Anon
Al-Anon meets at 7:00 pm Sundays at Padre Island Baptist Church
ALCOHOLICS ANONYMOUS MEETINGS
The Sunset 7 AA Meetings are held on Monday & Wednesday at 7 PM at:
Island Presbyterian Church
14030 Fortuna Bay Dr.
In addition AA meetings are held Friday 7 PM and Sunday 8 AM at
The second Gazebo on the Boardwalk behind Brisco King Pavilion

Crossword Solution

Pelicans and Coyotes By Nicole Scofield

C	A	R	E	S		C	R	A	M		G	L	O	B
A	B	O	V	E		L	U	N	G		A	I	D	E
J	A	M	E	S		B	O	N	D		M	A	R	K
U	S	E				S	O	G	G	Y		B	L	E
N	E	O				I	O	U			S	L	I	M
						T	O	M	P	E	T	T	Y	C
A	L	L	I	N					V	I	A		G	E
S	O	A	P						P	H	O	N	Y	P
A	D	S				O	A	K				S	A	C
P	E	T	E	R	O	S	E	B	O	W	L			
						D	A	H	L			E	P	A
A	W	A	R	E					S	P	L	I	T	A
V	A	N	N	A		W	H	I	T	E	H	O	U	S
O	N	C	E			E	A	S	E			E	A	S
W	E	E	D			E	G	A	D			D	R	E

Padre Landscapes

Commercial & Residential Services
Nursery & Organics

WINNER OF THE STATE OF TEXAS
SMALL BUSINESS AWARD



+ Professional Landscape Design, Construction & Maintenance
+ Hardscape and Earth Kind Solutions
+ Organic & Conventional Gardening
+ Vegetable Gardens & Hydroponics
+ Stone Work & Water Features

PadreLandscapes.com
(361) 949-6999
padrelandscapes@live.com
Nursery - 15605 SPID, Ste. B
On The Island

Owned & Operated by an Islander since 1993
Fully Insured
Final exam



ACCESS STORAGE

CLIMATE CONTROLLED

NEW UNITS AVAILABLE!

♦GATE ACCESS 7 DAYS A WEEK
♦24/7 VIDEO SURVEILLANCE
♦MOVING BOXES AND SUPPLIES
♦BOAT AND RV SPACES
♦INSURANCE AVAILABLE
♦MILITARY DISCOUNTS
♦AUTHORIZED BIG GREEN EGG DEALER
♦MAILBOX RENTALS
♦SHIPPING SERVICES

One Month Free with a 6 Month Lease!

8041 SPID
Near Ennis Joslin
361-992-5400
www.storageunitcorpuschristi.com

Like us on Facebook
facebook.com/storage.corpuschristi

Big Green Egg

OFFICIAL GOLD DEALER

Island Moon offering space for PIPOA candidates

With the election cycle for the PIPOA Board of Directors getting underway we offer space here each week for candidates to communicate with the membership. We run them unedited. Send submissions to editor@islandmoon.com.

Padre Isles Property Owners Association, INC.

Candidate Meet and Greet

Thursday, February 29, 2024
6:00 PM

Wyndham – Corpus Christi Resort North Padre Island Hotel
15202 Windward Drive

Come and meet the candidates for the upcoming March 23rd Board Election. You can submit questions for the candidates at the meeting or email questions to Gary Klepperich, Executive Director at gary@pipoa.net. The meeting will be live streamed via the PIPOA Facebook page.

The following persons have registered to run for the three seats up for election: Thomas

Candidates for Padre Isles Property Owners Association Board of Directors

Candidates for the Padre Isles Property Owners Association received eight Candidate application resumes for the 2024 Board election, to be held at the March 23, 2024 Annual Meeting. Three of seven Board of Directors seats are up for election. The seats are currently held by Drew Diggins, Ray Singleton and David Rossi, respectively.

The candidates for the upcoming 2024 Board elections are

Charles Cantu, Jr.

Chul Kim McGuire

Drew Diggins (Incumbent/President)

George Reed

Kevin Tansey

Michael Gdfula

Ray Singleton (Incumbent)

Thomas Gottemoller

The 2024 Board Candidates' resumes may be viewed on the Community Website: www.padreislespoa.net.

As of Tuesday according to Gary Klepperich, Executive Director of the PIPOA, "The Board has not made its determination as to what third party election service they will be engaging. Once they have made that determination, I will know what suite of voting services will be available."

Early voting underway

Nueces County Democratic and Republican Joint Primary Election *Election Day March 5, 2024*

Early Voting

February 20th - March 1st, 2024

Applications for Ballot by Mail for the Joint Primary Election *MUST* be received (not postmarked) by February 23, 2024 5:00 pm.

Ballot By Mail Information

Ballot By Mail Applications are good for one calendar year and expire on December 31st. You must request an application every year.

Request an application by email or phone at VoteByMail@nuecescountytexas.gov or (361) 888-0385

BBB Tip: Four steps to protect yourself this National Consumer Protection Week

As a nonprofit organization dedicated to strengthening marketplace trust, Better Business Bureau (BBB) knows that consumer protection is an essential component to maintaining a strong economy. Consumers who fall victim to unethical business practices or fraud often lose confidence in the marketplace, affecting their future purchasing behavior, attitude toward businesses, and quality of life. Additionally, many consumers' personal information is often compromised after providing it to a bad actor, significantly increasing the risk of experiencing identity theft - a crime that can take years to recover.

To protect themselves and their loved ones, consumers must play defense and engage with an increasingly digital marketplace responsibly and safely. Organizations and agencies across the U.S. provide countless resources to help people navigate a complex marketplace, and there is no better time to refresh your knowledge about protecting yourself than during National Consumer Protection Week.

Recognized annually during the first week of March, consumer advocacy and protection groups capitalize on National Consumer Protection Week to bring awareness to issues that could place people at risk of losing their time, money or personal information. Multiple government agencies, such as the FTC, FBI and CFPB, aggressively pursue and prosecute criminal fraud across the country. Still, the best defense against falling victim will always be the person engaging in the transaction.

As a consumer, there are a few simple steps you can take to protect yourself from a negative marketplace transaction:

Research. Spend time using resources such as BBB.org (or Give.org for charities) to search for reviews or complaints before handing over any money. Check for multiple contact methods and verify they are putting you in contact with the right business or person. Check the terms and conditions, including return or refund policies and warranty limitations – pay particular attention to the fine print.

Relate. Compare the price or estimate with other businesses to ensure you are getting a fair price for the product or service. Be wary of too-good-to-be-true deals, especially for name-brand products or projects that take a substantial amount of materials to complete. Check warranties, guarantees and policies across businesses – one that is a bit more expensive but has a more comprehensive warranty may be a better option.

Review. Take a step back from the interaction and review the entire process. Was there anything that made you suspicious or seems abnormal? Scammers rely on impulsive decisions and immediate

payment before the consumer can check if everything makes sense. Trust your gut – if something feels off, it may be best to walk away. Get as many specifics of the transaction as possible in writing, including delivery or completion dates, warranties and verbal promises.

Report. Less than 5% of victims of mass-market fraud report their experience to BBB or a government agency. Reporting scams helps organizations learn more about how people are exposed to unethical or fraudulent practices, which they can use to educate the public on how to avoid falling victim. Provide as much detail as possible – it is only through your reports that unethical practices come to light and may help you recover your identity or losses.

Use Official BBB Complaints

Encountering a marketplace issue can be frustrating, especially when it may seem that a business is not giving a dispute enough attention. While most challenges are easily solved by communicating directly with the business, consumers can also rely on BBB to help find a solution through its dispute resolution system, which begins after an official complaint has been submitted. By working with businesses and consumers to find a mutually agreeable resolution, BBB strengthens trust between buyers and sellers.

Use BBB Scam Tracker

Unfortunately, some issues are not with legitimate sellers or businesses but with con artists and scammers who are well-versed in appearing trustworthy. Using various strategies, these individuals often leverage human emotion and ongoing situations to steal from the public. By taking advantage of new technologies, scammers can cast their net across a much larger area by spoofing caller IDs, creating look-alike websites, providing fake investment dashboards and other highly sophisticated methods to appear legitimate.

Consumers who encounter scams are encouraged to report their experience to BBB Scam Tracker. If interacting with a suspicious business or individual, use BBB Scam Tracker to search for their name, company or other specifics to see if other people have encountered an issue with them. Users can search for reported scams by zip code, website, business phone number, and many other categories. In 2021, BBB Scam Tracker helped save consumers an estimated \$31 million.

For more information about how to protect yourself from unethical business practices and to search for BBB Business Profiles on companies across North America, visit BBB.org.



- * DELIVERY | CURBSIDE
- * DINE-IN OR CARRYOUT
- * WINE WED. HALF PRICE
- * CAULIFLOWER CRUST PIZZA
- * GLUTEN-FREE PIZZA
- * LOCAL DRAFT BEER

14493 SPID SUITE C
PADREPIZZERIA.COM
949.0787




Appetizers...

- * BAKED TURKEY BREAST SUB
- * HAM & CHICKEN SUB
- * BBQ CHICKEN SUB
- * CHICKEN ANCHOVILLA SUB
- * MEAT & CHEESE SUB

TRY OUR DESSERT SELECTIONS WITH A GLASS OF YOUR FAVORITE WINE!



- * MINI OFFICES AND WAREHOUSES
- * OFFICE WITH ATTACHED 10X15 STORAGE
- * DRIVE UP OVERHEAD DOOR
- * ADDITIONAL STORAGE AVAILABLE
- * DRIVE UP FRONT DOOR PARKING
- * PACKAGE DELIVERIES ACCEPTED
- * CABLE AND INTERNET AVAILABLE

(361) 937 8673 | 10514 S.P.I.D



**BILLS PAID
NO LONG TERM LEASE
GATED ACCESS**



By Ronnie Narmour
ronnienarmour@gmail.com

Spring is breaking...



Circling the wagons at the Festering Den of Sin a couple of years ago.

We finally made it to March and will soon see warmer days morphing into *hotter than the hinges on the gates of hell* days. Spring break will descend upon us next week on March 9th through St. Patty's Day on the 17th. If you've never been here during *spring break* here's a couple of pointers... stock up on all things survival and hunker down in your house until the coast is clear (literally). Or take a beach cruise down past the bollards and look for a gathering of two story pickup trucks with stripper poles in the back, chug a bunch of booze and jump in... it's called the *Festering Den of Sin* and it's not for the faint of heart. What is it?... it's a whole bunch of college students blowing off steam and bearing their plume in semi-organized bedlam. It's pretty much the same deal every year. School lets out for a week and a large majority of the student population heads to such beachy locations as Port Aransas, North and South Padre Island and Galveston. Port Aransas and South Padre have been favorite locations of spring breakers for as far as my memory serves. It's predictable. It begins as a little trickle and eventually becomes a tsunami of *Generation Alpha* kids on a dead run to poles 25- 28 where the bollards end. The early breakers will stake their territory and dig in and direct the *Festering Den of Sinners* to circle their wagons and start partying. Soon the stripper poles will take center stage and music I've never heard will fill the air. What's really fun is when **Rockin' Dale Rankin** digs out his TV camera and we jump right in the big center of it. It gets a little hairy but so far, we've come out pretty much unscathed. OK. That's the plan. I'll be out there taking pics and will let you know how things are going. You have one week to get your act together. Here's a pro-tip... do exactly what the cops say. They have their hands full and patience is at a premium. Trust me, you don't want to be another blip in their already manic day. You'll figure it out.

Scattered shots...



Rockin' Dale Rankin in the middle of a past Spring Break Port A.

The *Pirates and Poets* guys were in town last weekend and played *Shorty's* on Friday and Saturday afternoons. They also had shows at the *Plantation Suites Hotel* that evening. Trop-rocker **Jerry Diaz** got the ball rolling on Friday to a huge *Parrot Head* congregation from around the state. A *Parrot Head* is a party animal dedicated to the music of **Jimmy Buffett** and the lifestyle he promoted. Port A has a big *Parrot Head* contingency with our pal **Deno Fabrie** running the show. On Saturday they had **Jonas Lawrence** and **Dan Sullivan** performing and you couldn't swing a cat without hitting a *Parrot Head*. It was thick. Their promoter **Jon Burns** was on hand and served as the master of ceremonies. BTW Jerry Diaz has a very cool band with a real deal steel drum player and will play *Shorty's* on August 2. All of those guys have included *Shorty's* in their Gulf Coast trop-rock circuits for the last ten plus years. Also last weekend I saw a young, very very young rock band play *Shorty's* called **Identity Crisis** that I first heard about through the *Passion Project* who played the *House of Rock* with **Heavy Soul** recently. It was their drummer's

Three Chords and the Truth

20th birthday, which puts me somewhere in the great grandfather range at 51 years older than him. I liked these guys and it was refreshing to hear music I had no clue about. I have a feeling we're going to see more of these young men. Also *Shorty's* had **Funk Rock Stereo** with **Art Barrera** and his golden pipes on Saturday. I really dig that guy's voice. Also along with bassist **Lalo Garza** they had the super rocking **Art Saucedo** on drums. That, my brother, is one fine band. I also raced my tired old **Moon Monkey** at the *Gaff's* BELT SANDER RACES on Saturday and I think it was their busiest day I've ever seen there... like maybe 300+ people. I guess we can conclude that the word is out.

DO NOT MISS LIST Coming this weekend...



Pirates and Poets hosted shows at Shorty's all weekend. Shown here are Dan Sullivan, Jon Burns and Jonas Lawrence.

Coming this weekend we have some good options to consider. On Friday *Shorty's* has **Justin and Niki** doing the island beat thing and on Saturday its bluesman **John Cortez** playing his **SRV/Jimi Hendrix** tribute. Also on Saturday **Queen Legacy** a *Queen Tribute Band* will play the *Port Aransas Community Theater*. Plus the **Groove** will play the *VFW* and **Coach Dude Dugan** will perform at the *Gaff*. On Sunday Coach Dugan will play his usual Sunday show at *Shorty's*. Also on Sunday, The *Keep Her Wild* folks with host a fundraiser at the *Gaff* with the **Dunebillies**. Also on Sunday the country outfit **Tumble Dry Low** will play *Bernie's Beach House* and our Cajun pals **Boudreaux and Pousson** will play the *Packery Bar* on Padre. And on Monday, the new hot kid on the block, **Raul Ayala** will host an open jam at *Shorty's* with his most excellent keyboard player, **Christopher Ivory**. And coming on Thursday the 7th the *Port Aransas Garden Club* will host their really popular 27th *Annual Style Show* at the Civic Center. And finally this weekend will be the 15th *Annual OysterFest* in Fulton.

On the horizon...



Identity Crisis played Shorty's last Friday.

On the near horizon watch for shows from **Kolby Cooper**, **Chris Boss**, **Dreams**, **Midland**, **Pecos & the Rooftops**, **Flying Free**, **Triptonite**, **Ruben V**, **The CBDB's**, **The Toadies**, **Cruise Control**, **Testify: Rage Against the Machine Tribute**, **The Happys**, **Tyrone Vaughan**, **Richie Segura**, **Heavy Soul**, **Bushbullit**, **The Palacios Brothers**, **Greezy Wheels Duo**, **Johnny Cash Tribute**, **The Chainlinks**, **Megan Moroney**, **Joe King Carrasco**, **Aaron Jacobs** and **Gritty Fish**. That ought to hold you for a spell. Be safe out there.

And, that's the truth



The Winter Texans were thick as thieves at the Gaff's Belt Sand Races last Saturday.



Chris Boss will play Bron's on March 9.



Queen Legacy will play the PACT on Saturday

LIVE MUSIC TONIGHT

Friday, March 1

Justin and Niki @ Shorty's
Raul Ayala @ House of Rock
Spazmatics @ Brewster Downtown
Damon Scott @ Brewster Southside
JonMikael Mrez @ Pelican Lounge
Matt Hole @ Annex
Mighty Orq @ Vernon's
Metal Shop, Young Classics @ People's
Street Block Party
Cover Tones @ La Playa
By the Bay
Eli Brown @ Lucy Coopers
John Cortez @ Retro
Ruben Limas @ Blackbeard's

Saturday, March 2

Native Plant Sale & Swap @ Roberts
Point Park, 9 AM
Queen Legacy; Tribute to Queen @ PACT
John Cortez @ Shorty's
Jim Dugan @ Gaff
Groove @ VFW
Raul Ayala @ Pelican Lounge
Billy Snipes @ Island Italian
Joey Greer @ Brewster Downtown
The Green, Mike Love @ House of Rock
Meza Band @ Brewster Southside
Carson Miller & the Coastal Cowboys @ Legends Saloon
Jam Band @ La Playa by the Bay
O.B. Gonzales @ K-Bob's
Calallen
Clark Bros @ Beach Bum
Ruben Limas @ Pearl Oyster Bar

Sunday, March 3

KEEP HER WILD Fundraiser w/ Dunebillies @ Gaff
Jim Dugan, Ty Dietz @ Shorty's
Tumble Dry Low @ Bernie's
Jerry Ward @ Pelican Lounge
Boudreaux & Pousson @ Packery Bar
Eli Brown @ BUS
Catfish Blues Jam @



MARCH 8
MARCH 9
MARCH 10
MARCH 12
MARCH 13
MARCH 14



Rialto Theater
Billy Snipes @ Beach Bums
Ruben Limas @ Blue Marlin Saloon
Jennifer Gayle Bradley @ Blackbeards

Monday, March 4

Open Jam w/ Raul Ayala @ Shorty's

Tuesday, March 5

Open Mic w/Rev Matt @ House of Rock
Ruben Limas @ Blackbeard's

Wednesday, March 6

Cleartones @ VFW
PA Rockers @ Bernie's
Billy Snipes @ Doc's
Ty Dietz @ Vernon's
Ruben Limas @ Blackbeard's

Thursday, March 7

27th Annual PA Garden Club Style Show @ Port A Civic Center
45th Oysterfest 2024 @ Fulton
Robert McCoy & Luis Villarreal @ Gaff
Selfie @ Shorty's
Aaron Jacob @ Brewster Southside
Jam Night @ Exchange
Brad Brown @ Blackbeard's
Jonmikael Mrez Band @ The Nest
Ruben Limas @ Island Italian

Friday, March 8

45th Oysterfest 2024 @ Fulton
Starlite & the Moonbeams @ Shorty's
Rich Lockhart @ Bron's Backyard
Boudreaux & Pousson @ Gaff
Raul Ayala @ Rockit's
Chainlinks @ House of Rock
Scarecrow People @ Brewster Southside
Kolby Cooper @ Brewster Downtown
Jam Band @ South Texas Icehouse
John Cortez @ Vernon's
Cruise Control @ Sugar Shack
Groove @ La Playa
Downtown
O.B. Gonzales @ Grunts



BELT SANDER
RACES

THE GAFF

LIVE MUSIC



COLD BEER

OPEN DAILY AT 11 AM

HOT PIZZA