

# FURNITURE SYSTEMS

## PRODUCT SPECIFICATION

### Wall 1 Modular Shelving System



Any finish and size are available through our bespoke service, please contact us for details.

All timber materials are ethically sourced and manufactured from FSC approved sources.

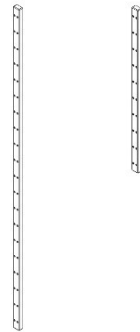
#### **Wall Rails – 2000h or 1000h**

Manufactured from Ash, all front facing edges are profiled with a 3mm radius. Finished with a stain to match and then coated with a satin water-based lacquer.

The shelf and cabinet hanging location blind holes, on the front face of the rail, are CNC machined to a tolerance of 0.01mm.

Wall fixing is provided by the Button-Fix system for invisible wall mounting, being flush mounted into the rear of the rail.

<https://button-fix.com/products/button-fix-type-1-flush>

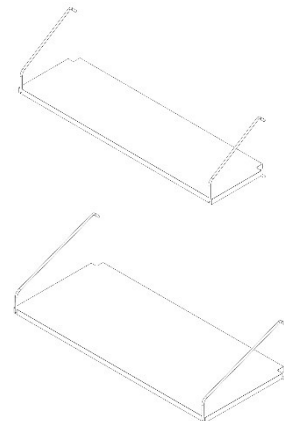


#### **Shelves and Shelf Hangers – 800w x 375d or 231d Deep**

Shelves are manufactured from 18mm B/BB Birch plywood.

Machined to accept steel hangers and veneered on both faces with an Alpi veneer. Finished in a satin water-based lacquer.

Shelf hangers manufactured from 6mm diameter bright mild steel with a Black Oxide\* finish.



\* Black Oxide is more environmentally friendly than electroplating.

# FURNITURE SYSTEMS

## **Open Display Case – 800w x 318h x 231d**

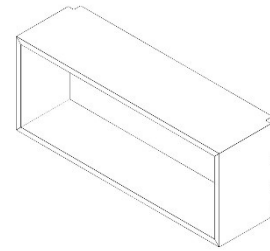
Manufactured from 18mm B/BB Birch plywood. Veneered on both faces with an Alpi veneer.

Carcass manufactured with mitred joints, which have been glued with biscuits for strength.

To the rear of the carcass are slots enabling 'lift and drop' installation of the removeable rear panel.

The rear panel is manufactured from 6mm MDF, finished to the colour of choice with a water-based paint.

The hanging of the display case is by using 6mm diameter pins placed into the wall mounted rails at the desired position. The case is then hung onto the pins with the corresponding holes to the rear of the case.



## **Display Cabinet with Glass Sliding Doors – 800w x 318h or 618h x 231d**

Manufactured from 18mm B/BB Birch plywood. Veneered on both faces with an Alpi veneer.

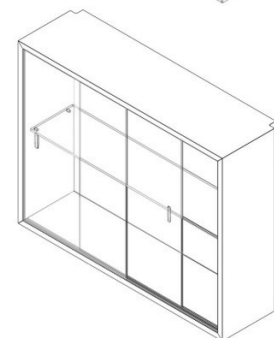
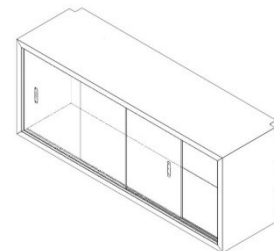
Carcass manufactured with mitred joints, which have been glued with biscuits for strength.

To the rear of the carcass are slots enabling 'lift and drop' installation of the removeable rear panel.

The rear panel is manufactured from 6mm MDF, finished to the colour of choice with a water-based paint.

To the front of the carcass are slots enabling 'lift and drop' installation of the 4mm thick sliding glass doors with ground and polished finger pulls.

The hanging of the case is by a concealed adjustable system.

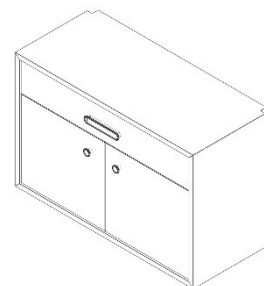


## **2 Door Cupboard with Drawer**

Manufactured from 18mm B/BB Birch plywood. Veneered on both faces with an Alpi veneer.

Carcass manufactured with mitred joints, which have been glued with biscuits for strength.

The hanging of the case is by a concealed adjustable system.



**Contact David or Chris to find out more.**

**David Wadsworth T: 07563 654742**

**Chris Cook T: 07768 224319**

**E: [sales@furniture-systems.co.uk](mailto:sales@furniture-systems.co.uk)**

**W: [www.furniture-systems.co.uk](http://www.furniture-systems.co.uk)**