



# **Labtec Sales Inc.**

## **Process and Hardware Solutions**

Phone: 408/847-5657  
frank@labtec-sales.com  
www.labtec-sales.com

### **Picosun**

#### **Atomic Layer Deposition Systems**



Morpher Platform

*Dual Chamber  
Hot-wall Reactor  
with Range of  
Load-locks.  
Production or  
Research*

[www.picosun.com](http://www.picosun.com)

### **Veeco**

#### **Spector Ion Beam Deposition Systems**



Spector HT

*Dual Source IBD  
System  
RF, DC and End-  
Hall Ion Sources*

[www.Veeco.com](http://www.Veeco.com)

### **SINGULUS**

#### **Sputtering Systems**



Rotaris System

*Research and  
Production Sputtering  
systems incorporating  
multiple target  
chambers*

[www.singulus.com](http://www.singulus.com)

### **Intlvac**

#### **Thin Film Deposition and Etching Systems**



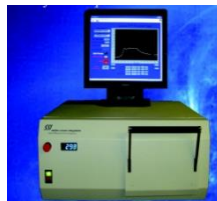
Nanochrome 1

*Systems for PVD,  
Ion Beam Etching,  
DLC and Optical  
Fiber Metallization*

[www.Intlvac.com](http://www.Intlvac.com)

### **SSI** *surface science integration*

#### **Rapid Thermal Processing Systems**



Solaris 100/150/200

*Low-cost RTP  
Dual Side Heating  
Temp to 1250C  
Ramp 150C/Sec  
PC Control*

[www.ssintegration.com](http://www.ssintegration.com)

[www.labtec-sales.com](http://www.labtec-sales.com)