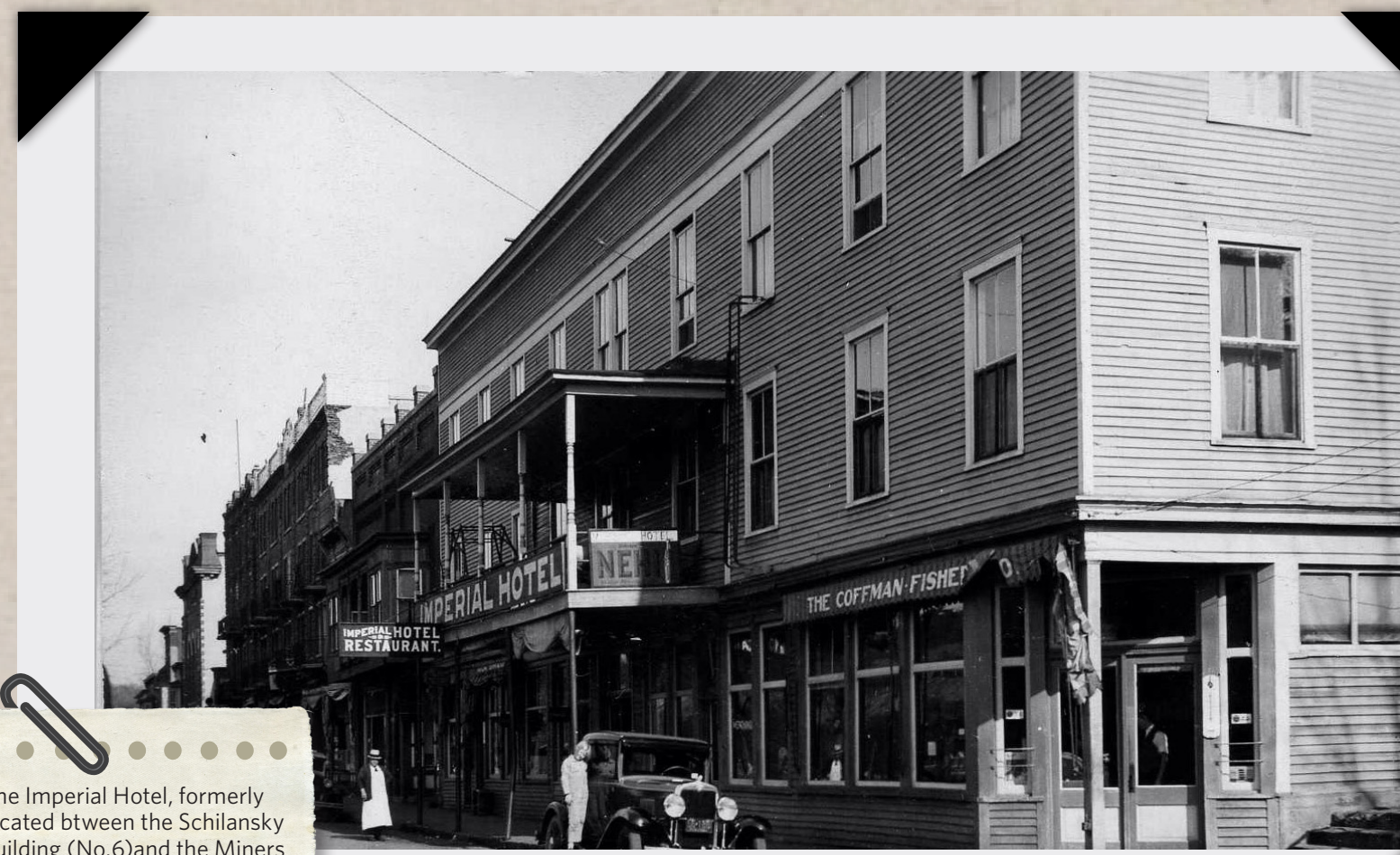


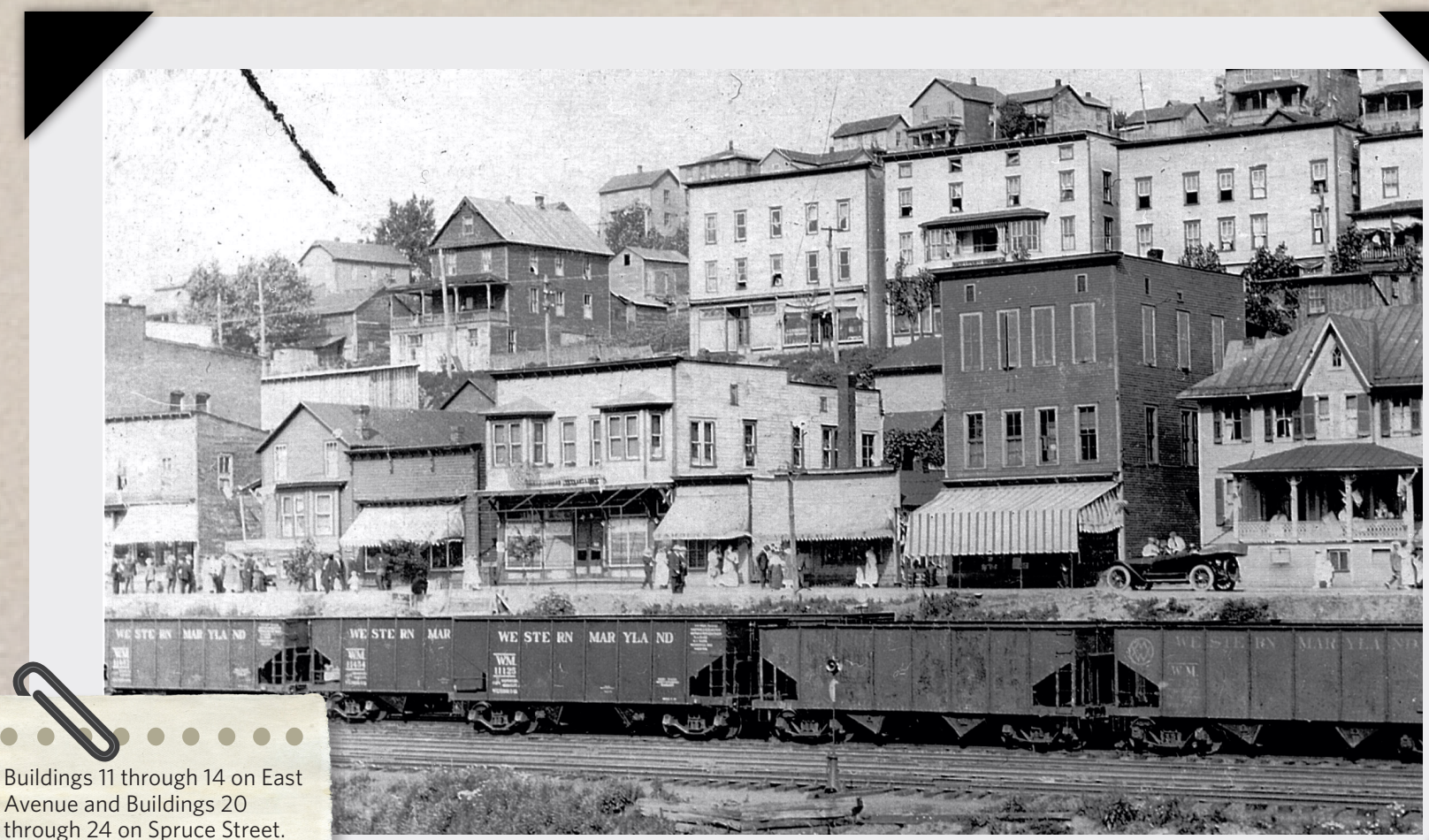
THOMAS: YESTERDAY AND TODAY

THOMAS, WEST VIRGINIA

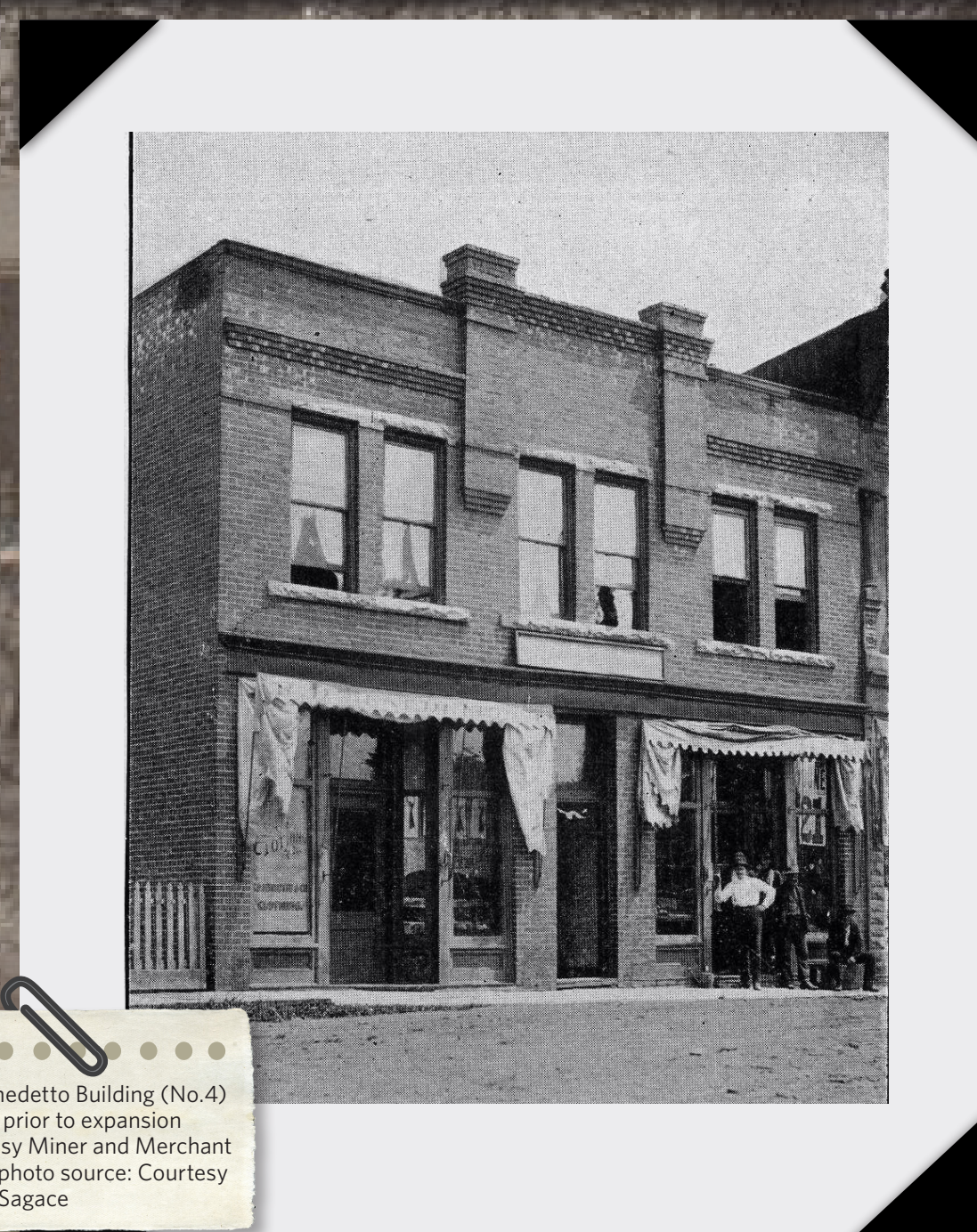
EVERY CITY grows and evolves over the years. Compare the various photos with what you see in Thomas today to see what is different and what has stayed the same.



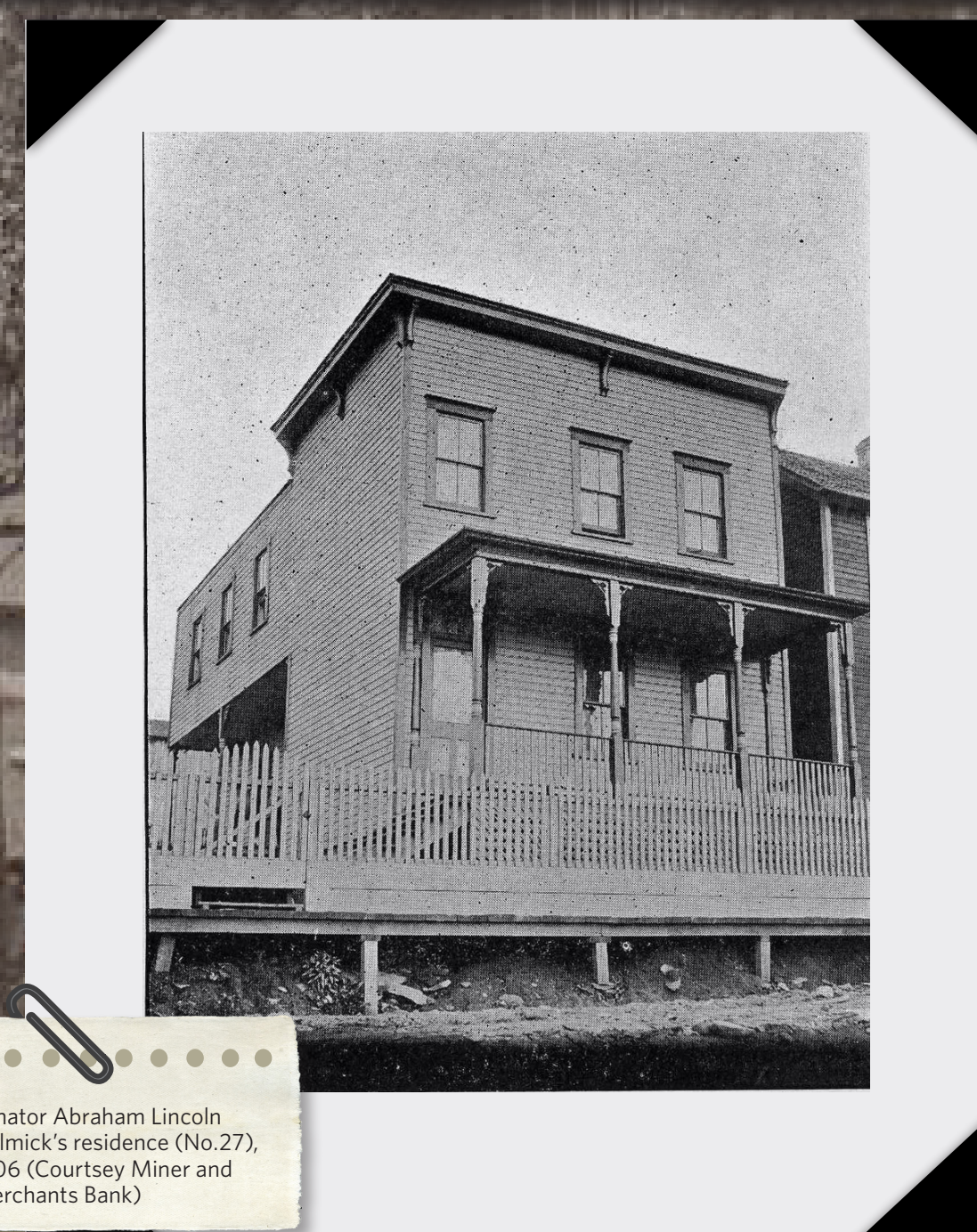
The Imperial Hotel, formerly located between the Schliansky Building (No.6) and the Miners Merchants Bank (No.8) (Courtesy Joseph Sagace to the Imperial Hotel Photo)



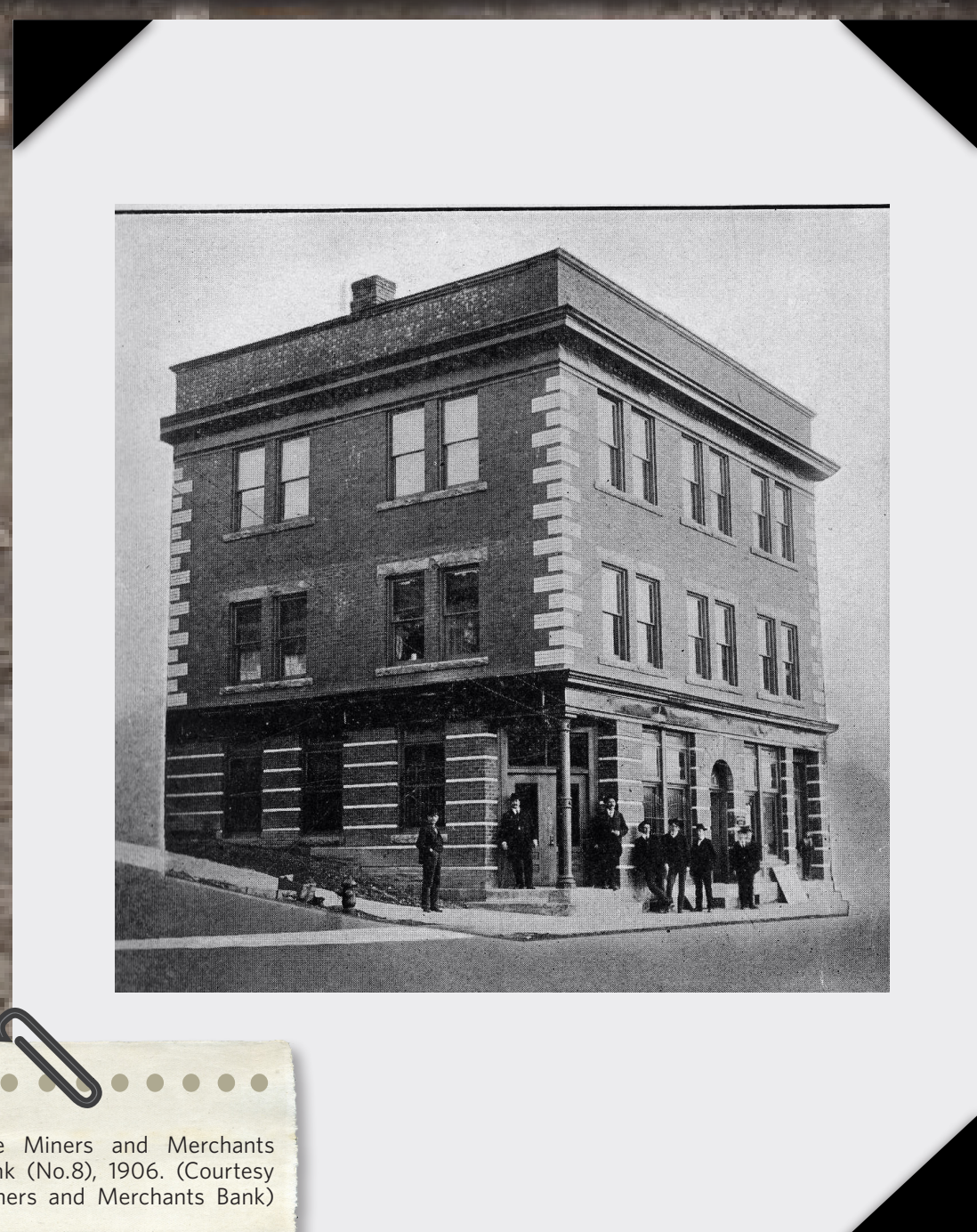
Buildings 11 through 14 on East Avenue and Buildings 20 through 24 on Spruce Street.



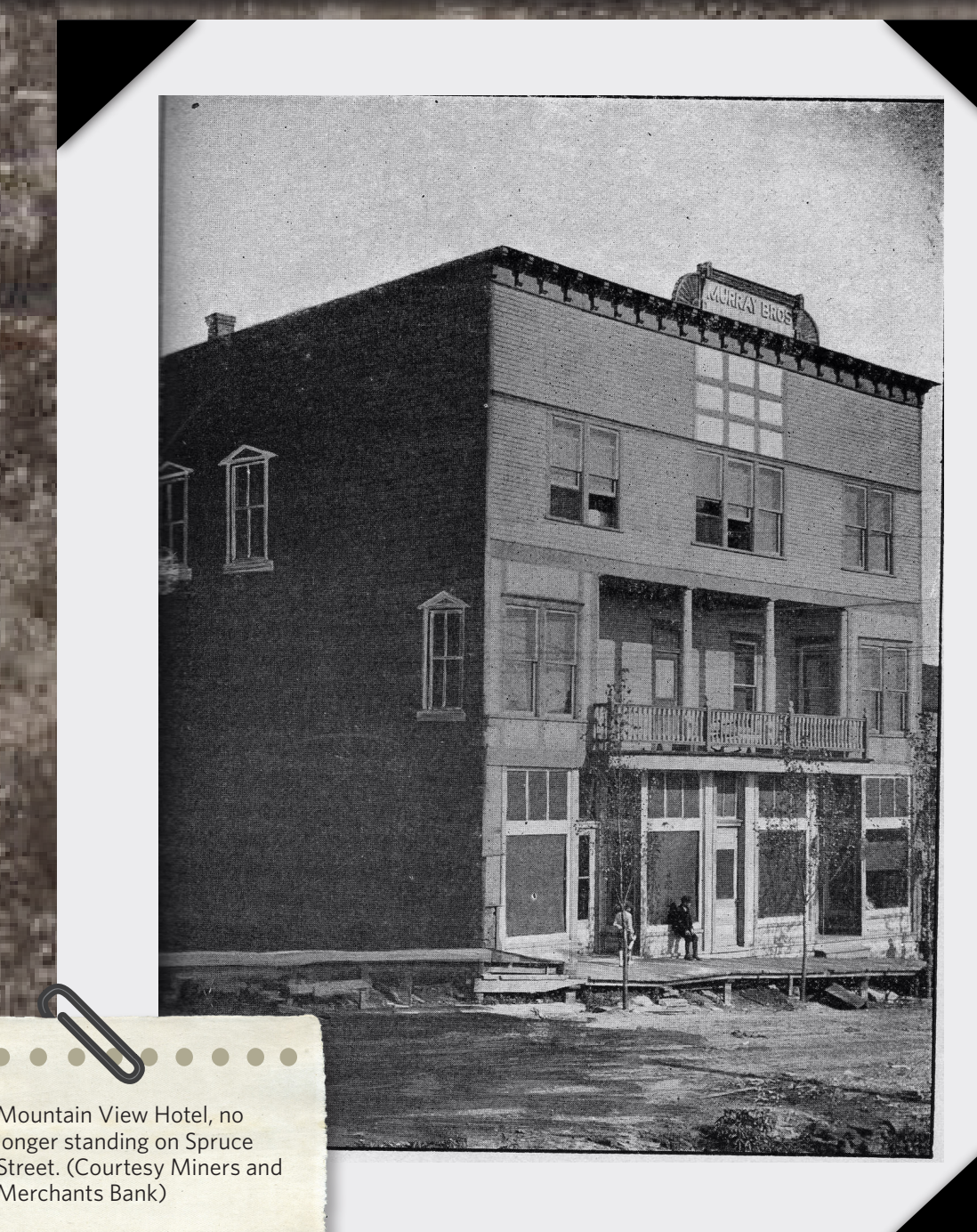
The Benedetto Building (No.4) in 1906 prior to expansion (Courtesy Miner and Merchant Bank) photo source: Courtesy Joseph Sagace



Senator Abraham Lincoln Helmick's residence (No.27), 1906 (Courtesy Miner and Merchant Bank)



The Miners and Merchants Bank (No.8), 1906 (Courtesy Miners and Merchant Bank)



Mountain View Hotel, no longer standing on Spruce Street. (Courtesy Miners and Merchant Bank)

