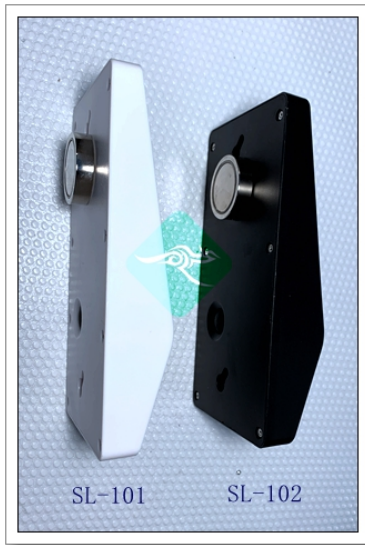
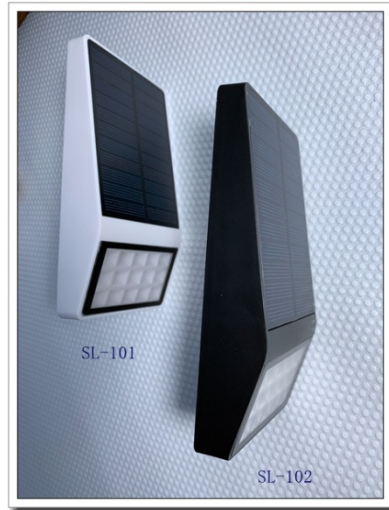




SHANLI SL-101 and SL-102 series of magnetic mounting solar light

(small size)



Solar panel: poly-silicon 5.5V/1W
Battery: 3.7V/2000mAh
Material: ABS
Function: Microwave induction +Dim Light
Size: 160mmX80mmX40mm

The high-magnetic magnet on the back can be directly attached to rain gutters and iron fences, so the installation is very simple.

Tips:

1.Unlock and activate the solar lamp:

The internal battery is locked for safety reason during delivery, so user should press the ON/OFF button to unlock it.

2.How to install the lamp?

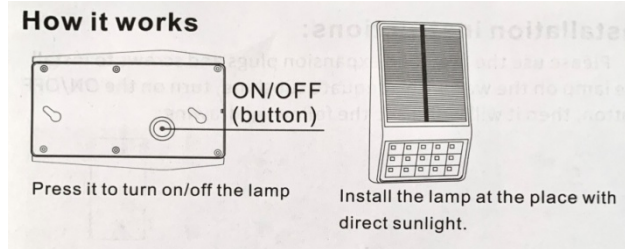
Please use the provided expansion plugs and screws to install the lamp on the wall or any outdoor place you want for lighting.

3.Charge the solar panel

Face the solar panel to the sun directly to make sure It gets adequate sunshine, avoid any obstructions or dust.Generally it can be fully charged one day under good sunshine.

4.Light sensor function

Light turns on at night or in darkness, and turns off in daytime or bright area automatically.



Attention:

1. Charge the lamp at least 8 hours under the sun when use it the first time.
2. The lamp has light control function, it will turn off under bright area.
3. The lighting time of the lamp depends on the brightness and range of irradiation of the sunlight, please be aware of the charging time each day.
- 4.Please make sure no obstructions on the solar panel and avoid installing at bright place at night.
- 5.Do not open the charging part if you are not a professional technician in case any damage to the lamp.
- 6.It keeps strong light when someone approaches, and then turns to dim light after 30 seconds if no one nearby.